

FAIRVIEW 325

🏠 4 🛏 2.5 🚗 2

Total squares 35.0sq

B
SERIES

Minimum
Lot Width
14.0m

Minimum
Lot Length
25.0m



Design Dimensions
10,310mm(W) x 17,150mm(L).

Facade Choices
Fullerton, Huntington, Moorpark,
Oakwood, Palisades, Redlands, Riverside.
Details based on Riverside façade floorplan (Illustrated)

DESIGN DIMENSIONS

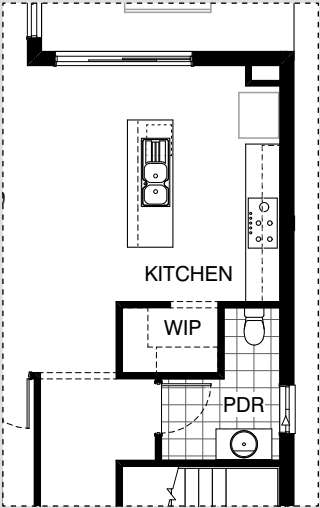
Residence	269.8m ²	29.1sq
Garage	36.1m ²	3.9sq
Porch	4.0m ²	0.4sq
Alfresco	15.5m ²	1.7sq
Total	325.4m²	35.0sq

Burbank

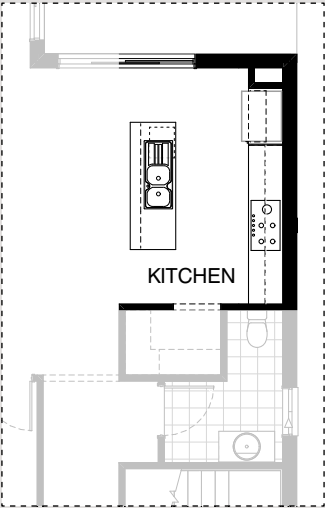
*Copyright conditions. All photos and illustrations are representative only. Floor plans and specifications may be varied by Burbank without notice, the dimensions are diagrammatic only and a Building Contract with final drawings will display correct dimensions and detail. All designs are the property of Burbank and must not be used, reproduced, copied or varied, wholly or in part without written permission from an authorised Burbank representative. Copyright Burbank Australia Pty Ltd. ABN 91 007 099 872. Builders Registration Number CDB-U-52603.



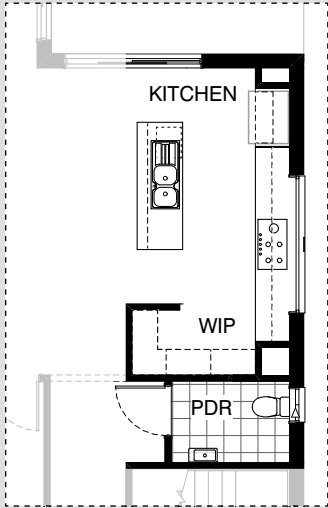
KITCHEN OPTIONS



Master Kitchen Design

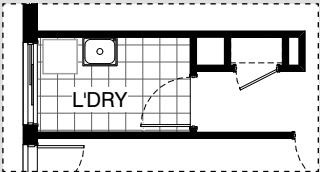


K01

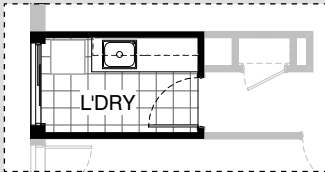


K02

LAUNDRY OPTION

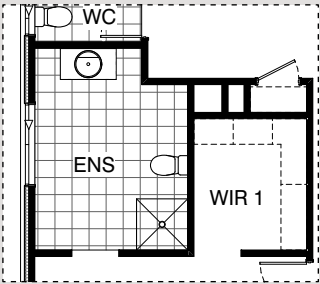


Master Laundry Design

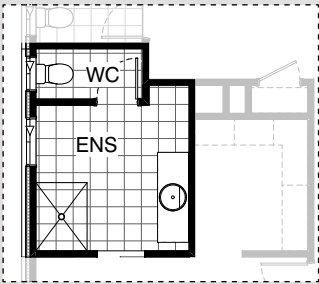


LD01

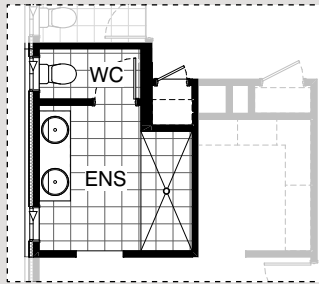
ENSUITE OPTIONS



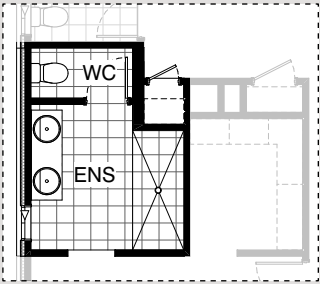
Master Ensuite Design



EN01

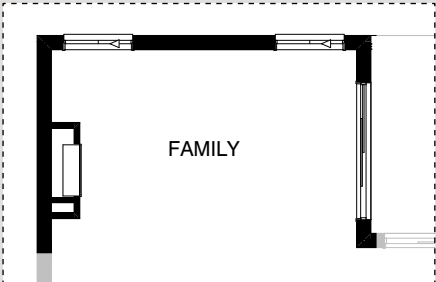


EN02

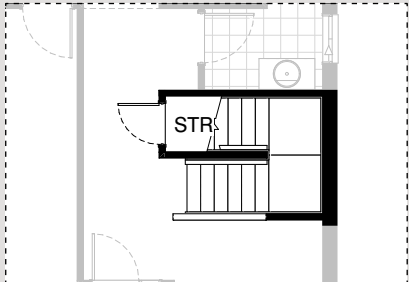


EN03

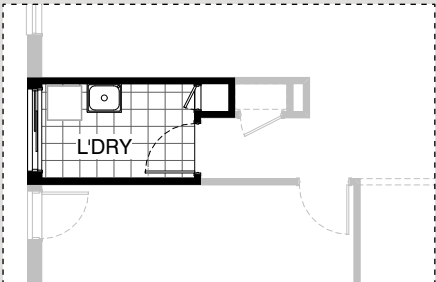
INTERNAL OPTIONS



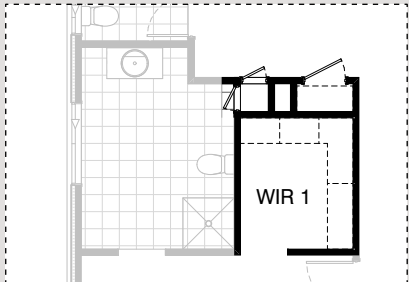
GROUND FLOOR **IN01**



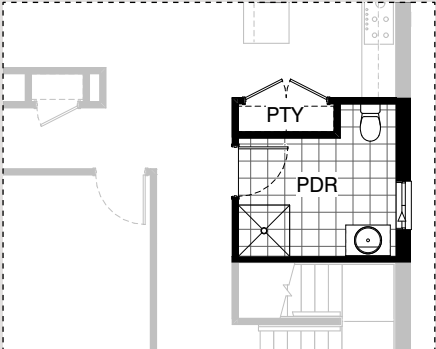
FIRST FLOOR **IN02**



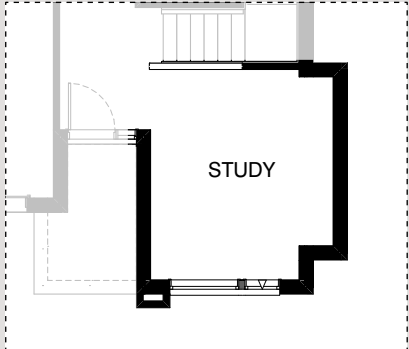
GROUND FLOOR **IN03 GF**



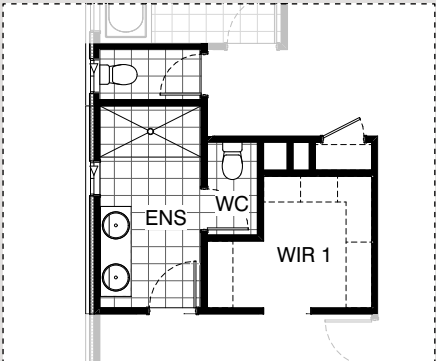
FIRST FLOOR **IN03 FF**



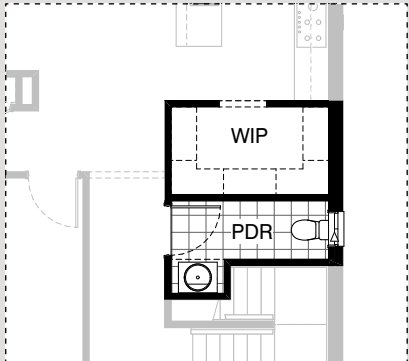
GROUND FLOOR **IN04**



GROUND FLOOR **IN05**



FIRST FLOOR **IN05**

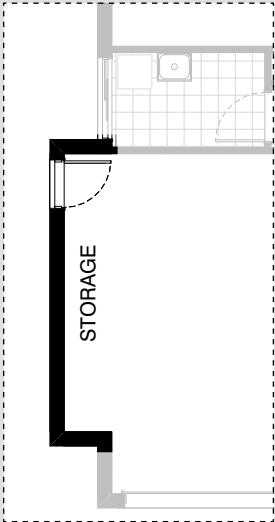


GROUND FLOOR **IN07**

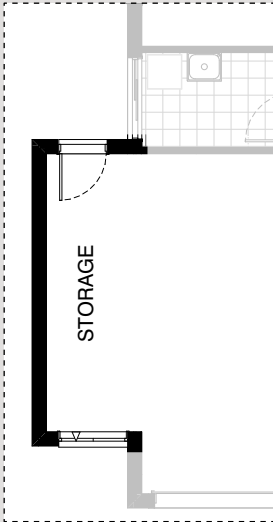
INTERNAL OPTIONS



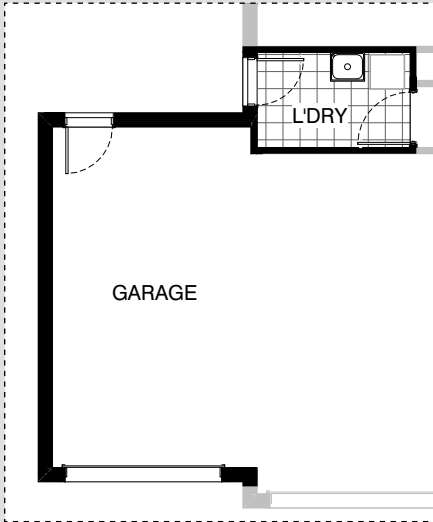
GARAGE OPTIONS



G01



G02



G03

FAIRVIEW 325

OPTION DESCRIPTIONS

Kitchen Option 01

Provide Kitchen Upgrade with 1No. 900mm pot drawers, 2No. 900mm overhead cabinets, 1No. 450 cutlery draw & 450 base cabinet. With 1No. 900mm underbench oven, 1No 900mm hotplate and 1No. 900mm retractable rangehood. 1No. 900mm laminated open shelf above refrigerator space.

Kitchen Option 02

Provide kitchen upgrade with 1No. 900mm laminated hinged door above refrigerator space, 2No. 800mm base cabinets, 1No. 900mm retractable rangehood with 1No. 900mm underbench oven, 1No 900mm hotplate, 2No. 400 base cabinets, 2No. 800mm overhead cabinets, 2No. 400mm overhead cabinets. provide 1No. 514mm x 2410mm Aluminium fixed window. Reduce powder room size and provide 1No. 1027mm x 610mm Aluminium sliding window in lieu of standard, adjust WIP shelving to suit.

Laundry Option 01

Provide Laundry Upgrade with s.s. inset trough in 32mm laminated benchtop. 2No. 900mm base cabinets and 2No. 900mm overhead cabinets and additional tiled splashback and benchtop to suit.
NOTE:- This Option Not to be used with Option Garage03.

Ensuite Option 01

Provide Ensuite Upgrade with additional site built plaster lined walls to WC with 1No. 720mm flush panel hinged door and 1No. 1027mm x 610mm aluminium sliding window. 1No. 1200mm x 900mm tiled shower base. 1No. 1582mm wide vanity unit in lieu of standard and 1No. 1800mm x 850mm aluminium sliding window in lieu of standard.

Ensuite Option 02

Provide Ensuite Upgrade with 1No. 2100mm x 900mm tiled shower base, 1No. 1582mm wide vanity unit with 2No. basins in lieu of standard and 1No. 1800mm x 610mm aluminium sliding window in lieu of standard. Site built plaster lined walls to WC with 1No. 720mm flush panel hinged door and 1No. 1027mm x 610mm aluminium sliding window to suit. Provide site built plaster lined Linen cupboard with 4No. shelves and 1No. 520mm flush panel hinged door to suit.

Ensuite Option 03

Provide Ensuite Upgrade with 1No. 2100mm x 900mm tiled shower base, 1No. 1582mm wide vanity unit with 2No. basins in lieu of standard and 1No. 1800mm x 610mm aluminium sliding window in lieu of standard. Site built plaster lined walls to WC with 1No. 720mm flush panel hinged door to suit. Provide site built plaster lined Linen cupboard with 4No. shelves and 1No. 520mm flush panel hinged door to suit.

Internal Option 01

Provide Real Flame Inspire 900 gas fireplace, 400mm off floor level in a 1400mm x 420mm boxed out plaster wall with a 4 sided black fascia to Family room rear wall. Relocate plumbing stack.

Internal Option 02

Provide Store room below stair including 720mm flush panel hinged door, plaster lined walls and raked plaster ceiling on battens with square set cornice including additional light point.
NOTE: Flooring Not included

Internal Option 03

Provide Laundry chute.

Internal Option 04

Provide Powder Upgrade with additional 900mm x 900mm recessed shower base. Relocate hinged door, provide pantry cupboard with 2x720mm doors in lieu of W.I.P Remove bulkhead from corridor.

Internal Option 05

Provide Study Option by extending Study wall width by 600mm with brick parapet flat roof above.
Increase area by 2.08m²
Increases width by 600mm.

Internal Option 06

Provide Ensuite and W.I.R Upgrade including reduce Ensuite and WC by 100mm and reduce part W.I.R by 80mm to provide separate WC to Ensuite. Provide 1582mm wide vanity unit with 2No. basins and 1800mm x 900mm tiled shower base. Provide 820mm flush panel hinged door to Ensuite in lieu of standard opening and 1200mm x 610mm aluminium sliding window in lieu of 1200mm x 1450mm window. Provide additional 450mm shelf and hanging rail to W.I.R as required.

Internal Option 07

Provide Walk in Pantry and Powder Room upgrade including; Walk in Pantry depth increased by 400mm and width increased by 1090mm, Powder reduced to suit. 1No. 1200mm x 610mm Aluminium Sliding Window to Powder in lieu of standard, 1No. 682mm Vanity to new alcove under stair in lieu of standard, WC relocated to external wall, Provide raked plaster bulkhead above vanity.

Garage Option 01

Provide extension to Garage to create additional Storage area. Provide pitched roof and lightweight cladding ('Scyon Stria') above.
Increases area by 4.53m².
Increases width by 840mm.

Garage Option 02

Provide extension to Garage to create Storage area including additional 2057mm x 1210mm Aluminium feature awning window. Provide pitched roof and lightweight cladding ('Scyon Stria') above.
Increases area by 9.05m².
Increases width by 1680mm.

Garage Option 03

Provide triple car Garage including additional Garage door as per colour selection. Provide pitched roof and lightweight cladding ('Scyon Stria') above. Provide additional 1No. 2105mm x 850mm external hinged door in lieu of standard 2110mm x 1450mm Aluminium sliding door to Laundry.
Increases area by 23.29m².
Increases width by 3600mm.
NOTE:- This Option Not to be used with Option Laundry01

