

CHAMBERS | 15

3 2 1

IDEAL LOT WIDTH

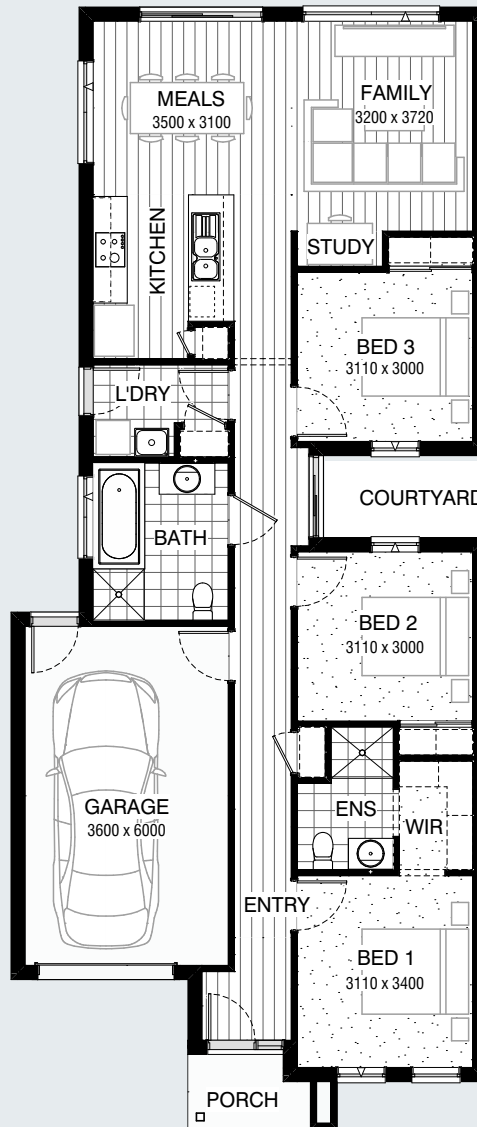
8.5m

IDEAL LOT LENGTH

25m



SERIES



Facades Available:

Avenue, Bayview, Boulevard,
Parkway (illustrated) and Strand

House Dimensions

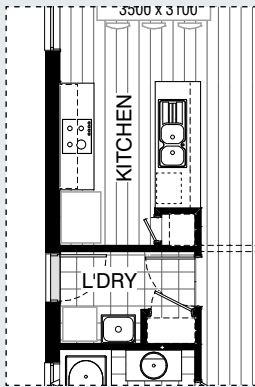
Total Width 8,390mm
Total Length 19,790mm

Design Dimensions

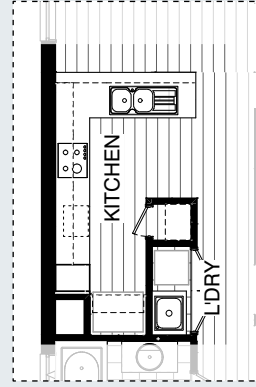
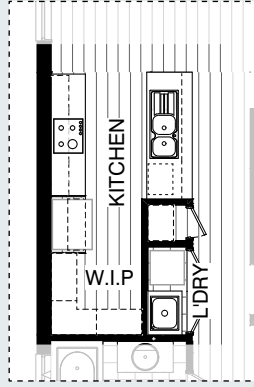
Residence	111.5m ²	12.0sq
Garage	24.1m ²	2.6sq
Porch	3.0m ²	0.3sq
Total	138.6m²	14.9sq

FLOORPLAN OPTIONS

Master Kitchen Design



KITCHEN OPTION

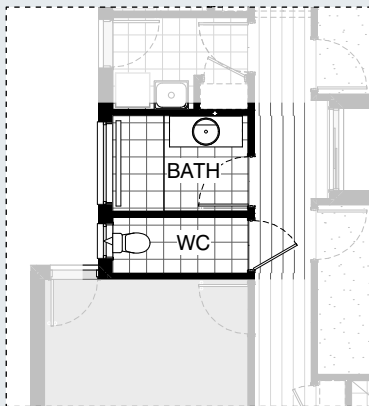


K01

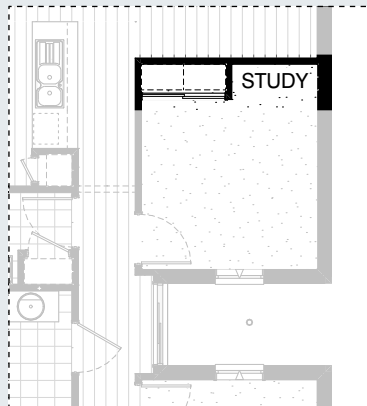
K02



INTERNAL OPTIONS

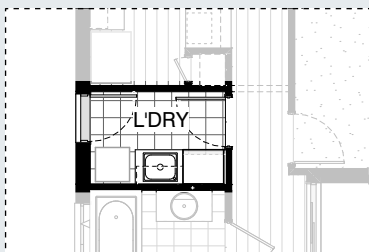


IN01



IN02

LAUNDRY OPTIONS

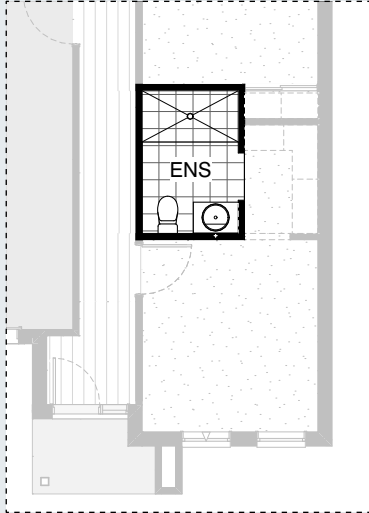


L01

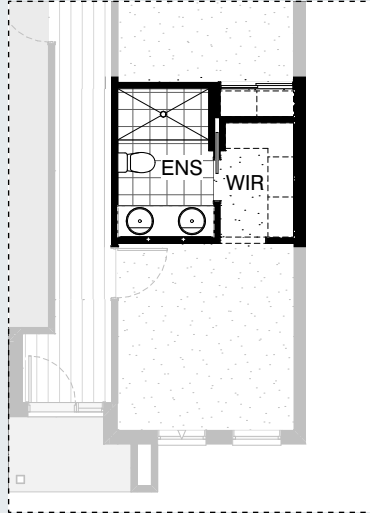
FLOORPLAN OPTIONS



ENSUITE OPTIONS



EN01



EN02

EXTERNAL OPTIONS



EX01

OPTION DESCRIPTIONS

KITCHEN OPTIONS

Kitchen Option 01

Provide Kitchen upgrade option, including:
 additional benchtop and tiled splashback,
 relocated Ref. space with laminate open shelf,
 600mm under bench oven and cooktop,
 900mm retractable rangehood,
 dishwasher provision,
 microwave provision with pot drawer,
 1No. 450mm drawer unit,
 1No. 900mm base cupboard,
 1No. 600mm base cupboard,
 3No. 150mm base cupboard,
 2No. 600mm overhead cupboards,
 2No. runs of 4No. 450mm shelving to Walk-in Pantry.
 Relocated Laundry includes:
 trough with laminate benchtop,
 1No. 700mm base cupboard,
 2No. 720mm hinged doors,
 1No. 520mm hinged door to relocated Linen cupboard,
 4No. 450mm shelves.

Kitchen Option 02

Provide L-shaped Kitchen upgrade option, including:
 additional benchtop and tiled splashback,
 relocated Ref. space with laminate open shelf,
 600mm under bench oven and cooktop,
 900mm retractable rangehood,
 dishwasher provision,
 microwave provision with pot drawer,
 1No. 450mm drawer unit,
 1No. 900mm base cupboard,
 1No. 300mm base cupboard,
 2No. 150mm base cupboard,
 1No. 900mm corner base cupboard with bi-fold door,
 2No. 900mm overhead cupboards,
 1No. 450mm overhead cupboard,
 1No. 450mm laminate Pantry unit.
 Relocated Laundry includes:
 trough with laminate benchtop,
 1No. 700mm base cupboard,
 2No. 720mm hinged doors,
 1No. 520mm hinged door to relocated Pantry cupboard,
 4No. 450mm shelves.

INTERNAL OPTIONS

Internal Option 01

Provide WC upgrade option, including:
 Separate enclosed WC with 870mm hinged door,
 additional 1029mm x 610mm aluminum awning window,
 1282mm vanity with single basin,
 1680mm x 900mm tiled shower base with grate drain,
 350mm x 1450mm aluminium fixed window over shower in lieu of standard.
 Remove bath with tiled hob.

Internal Option 02

Provide floor plan option which flips the Study nook to face into Bed 3 and swaps the locations of built-in Robe and Study Nook as shown.

EXTERNAL OPTIONS

External Option 01

Provide Alfresco option, including:
 2No. additional 470mm x 470mm brick piers
 with 135mm x 135mm timber post,
 additional structural concrete slab, additional tiled roof over,
 Note: Option increases total floor area by 11.49m².

ENSUITE OPTIONS

Ensuite Option 01

Provide Ensuite upgrade option, including:
 1690mm x 900mm tiled shower base in lieu of standard.
 Remove built-in Linen cupboard.

Ensuite Option 02

Provide Ensuite upgrade option, including:
 1600mm x 900mm tiled shower base,
 1582mm vanity with double basins including 1 row
 tiling beneath mirror to suit wall-to-wall benchtop
 including returns and relocated toilet,
 720mm cavity sliding door in lieu of bulkhead opening.
 Note: Option decreases Bed 1 by 100mm.

LAUNDRY OPTIONS

Laundry Option 01

Provide Laundry upgrade option, including:
 stainless steel trough with laminate benchtop,
 1No. 800mm base cupboard,
 1No. 800mm overhead cupboard,
 1No. 700mm full height laminate cupboard.
 Remove built-in Linen cupboard.