

**FLOORPLAN OPTIONS**

We personalise our floorplans. Talk to us about our huge range of ready-to-go design options.

**Facades available:**

Coastal, Delta, Kingston, Nouveau  
Salisbury, Traditional, York

**Overall home width 12.23m**

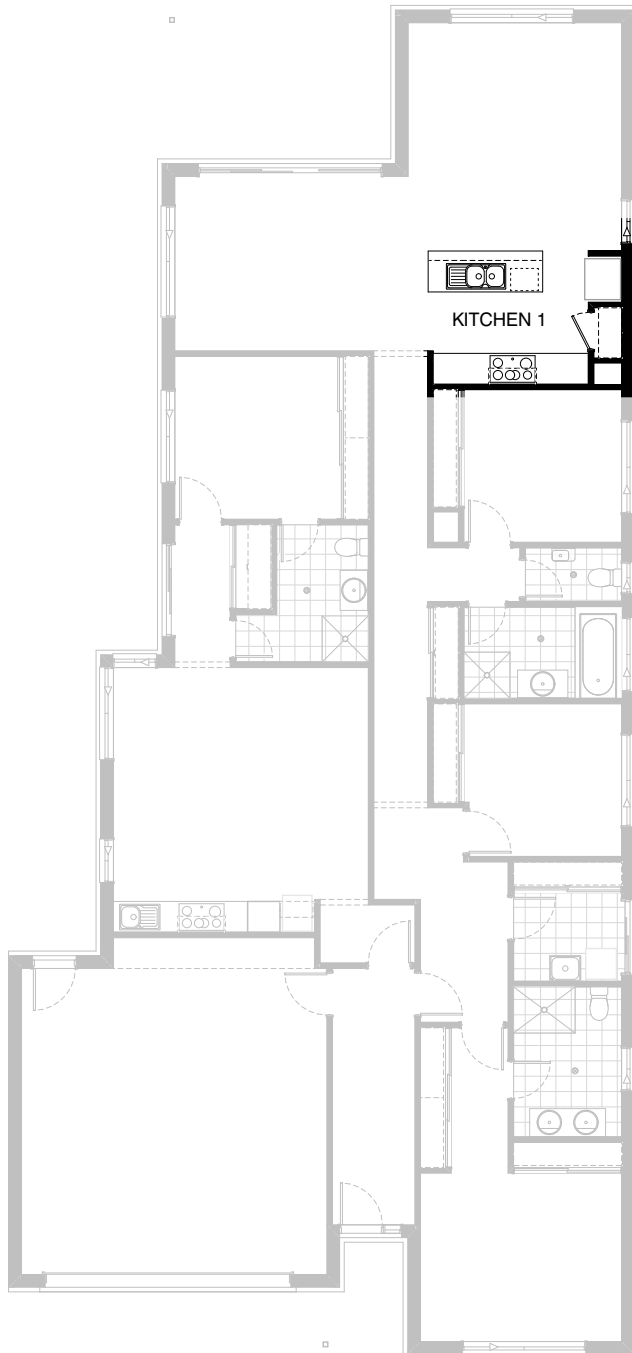
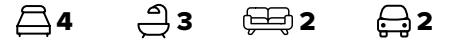
**Overall home length 26.27m**

Residence	151.4m <sup>2</sup>	16.3sq
Unit	54.3m <sup>2</sup>	5.8sq
Garage	42.0m <sup>2</sup>	4.5sq
Porch	3.6m <sup>2</sup>	0.4sq
Alfresco	13.7m <sup>2</sup>	1.5sq
<b>Total</b>	<b>265.0m<sup>2</sup></b>	<b>28.5sq</b>

Listed details based on Traditional facade floorplan (illustrated)

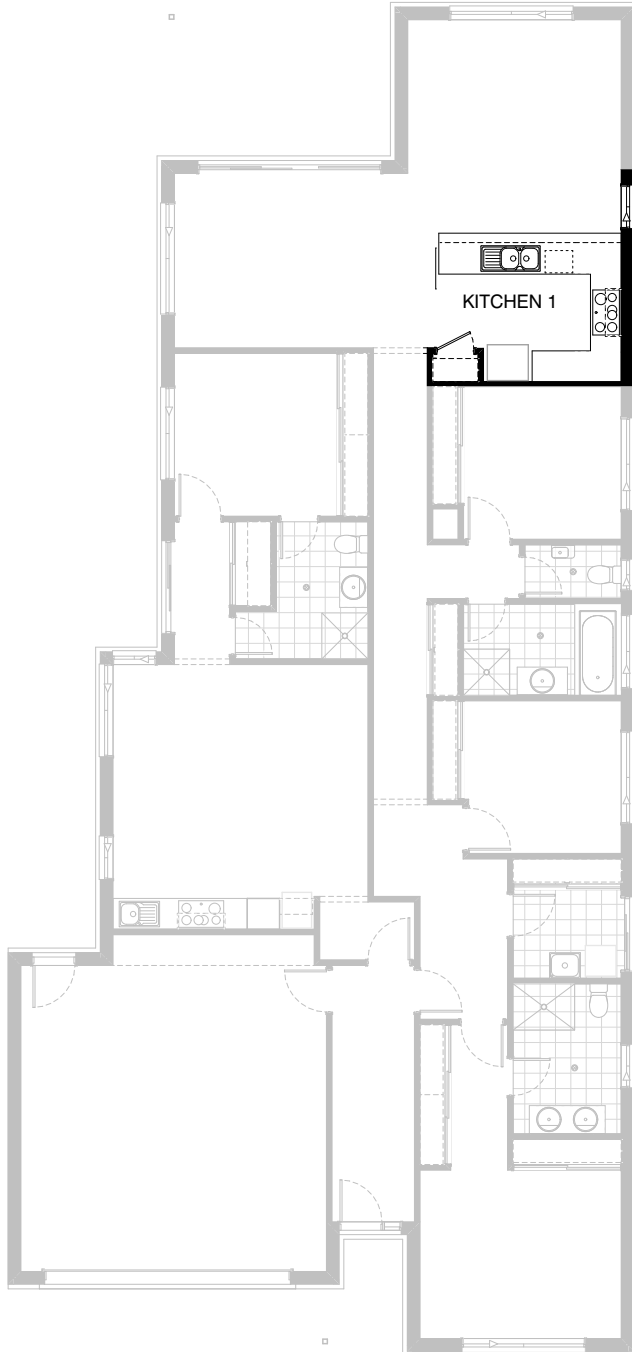
\*Copyright conditions. All photos and illustrations are representative only. Floor plans and specifications may be varied by Burbank without notice, the dimensions are diagrammatic only and a Building Contract with final drawings will display correct dimensions and detail. All designs are the property of Burbank and must not be used, reproduced, copied or varied, wholly or in part without written permission from an authorised Burbank representative. Copyright Burbank Australia (QLD) Pty Ltd. ABN 77 103 014 615. QBCC 1046544.

**Call 13 BURBANK**  
**Visit [burbank.com.au](http://burbank.com.au)**



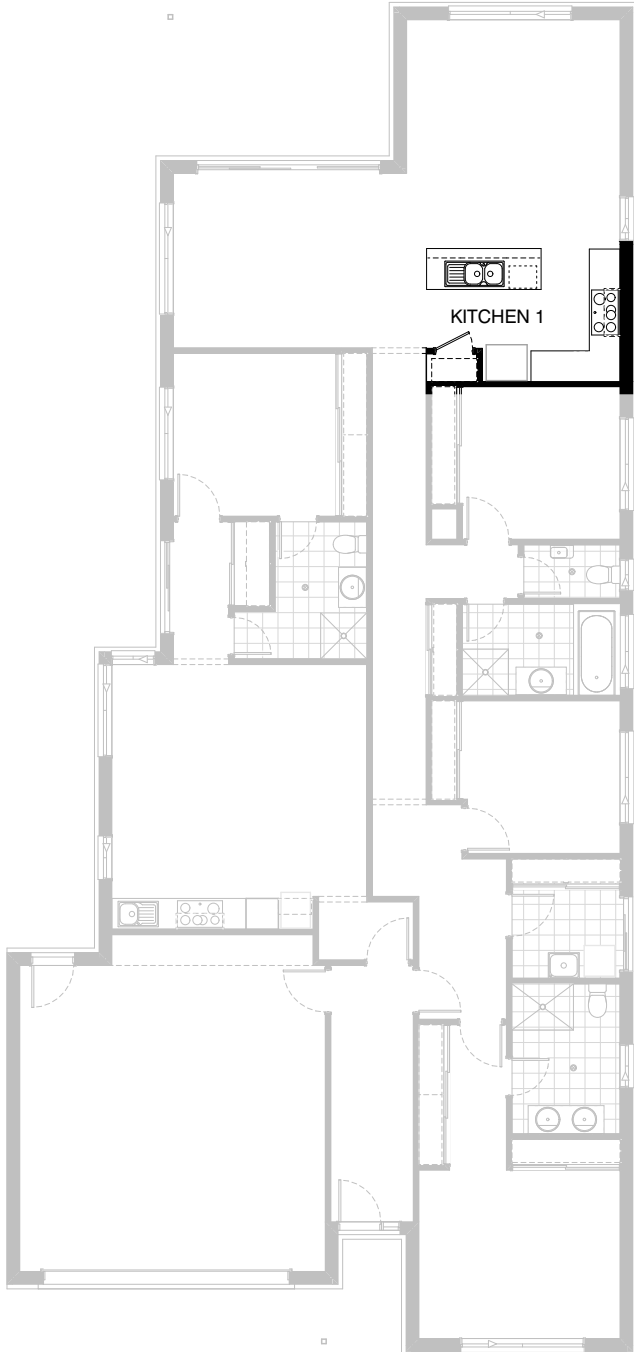
### Option Kitchen01

Provide Kitchen upgrade including  
900mm retractable rangehood,  
900mm electric cooktop,  
900mm under bench oven,  
1No. 450mm drawer unit,  
dishwasher provision,  
microwave provision with pot drawer,  
1No. 900mm base cupboard,  
2No. 600mm base cupboard,  
400mm base cupboard,  
additional bench top and tiled  
splashback to suit.



### Option Kitchen02

Provide U-shaped Kitchen upgrade including 900mm retractable rangehood, 900mm electric cooktop, 900mm under bench oven, 1No. 450mm drawer unit, dishwasher provision, microwave provision with pot drawer, 2No. 900x900mm base corner cupboards, 1No. 900mm base cupboard, 1No. 800mm base cupboard, 300mm base cupboard, additional bench top and tiled splashback to suit.



### Option Kitchen03

Provide L-shaped Kitchen upgrade with island bench including  
900mm retractable rangehood,  
900mm electric cooktop,  
900mm under bench oven,  
1No. 450mm drawer unit,  
dishwasher provision,  
microwave provision with pot drawer,  
1No. 900mm base cupboard,  
1No. 900x900mm base corner cupboard,  
1No. 800mm base cupboard,  
1No. 300mm base cupboard,



### Option External01

Provide Grand Alfresco option including tiled roof, structural concrete slab and 3No. 470x470mm brick piers. Adds 3000mm of length to the building footprint. (Note: only available with a lot length of 35m or greater)



### Option External02

Provide corner sliding door option with ACSD 3624 door. Replace ASW1224 with 2No. ASW2009 windows as shown.



**Option External03**

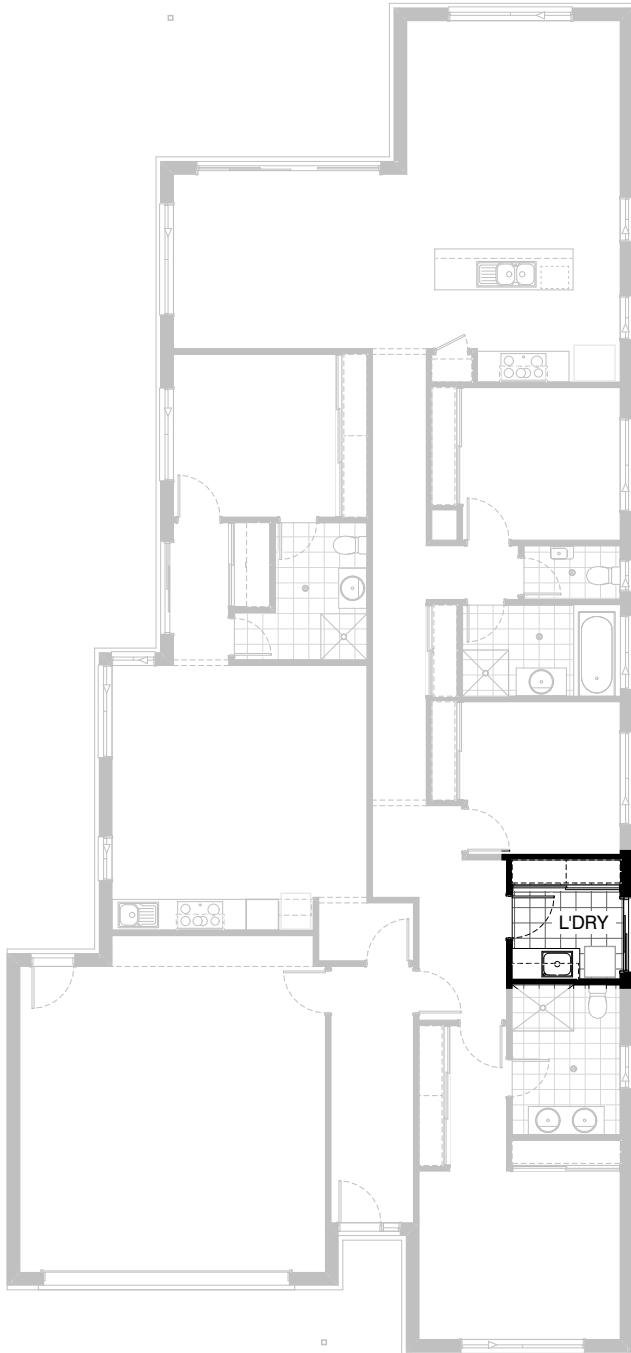
Provide Pergola option with 3No. 90x90mm LOSP painted timber posts to support 190x45 painted timber beams and rafters as shown. Rafters fixed to Colorbond fascia with timber blocking behind.



### Option Internal01

Provide Floor Plan option including a mirrored Family and Alfresco area. ASW2021 window to Meals replaced with ASD2121 sliding door for direct access to Private Open Space.





### Option Laundry01

Provide Laundry upgrade including laminate base cupboards and stainless steel inset trough including 800mm base cupboard, 450mm base cupboard, 800mm overhead cupboard and 450mm overhead cupboard, additional benchtop