

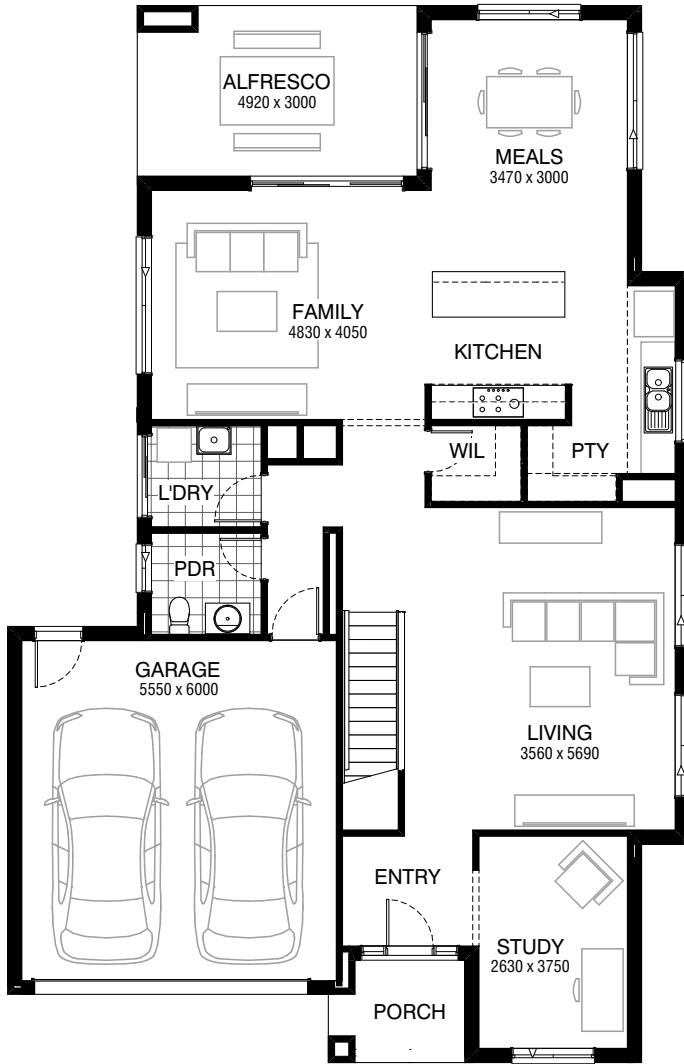
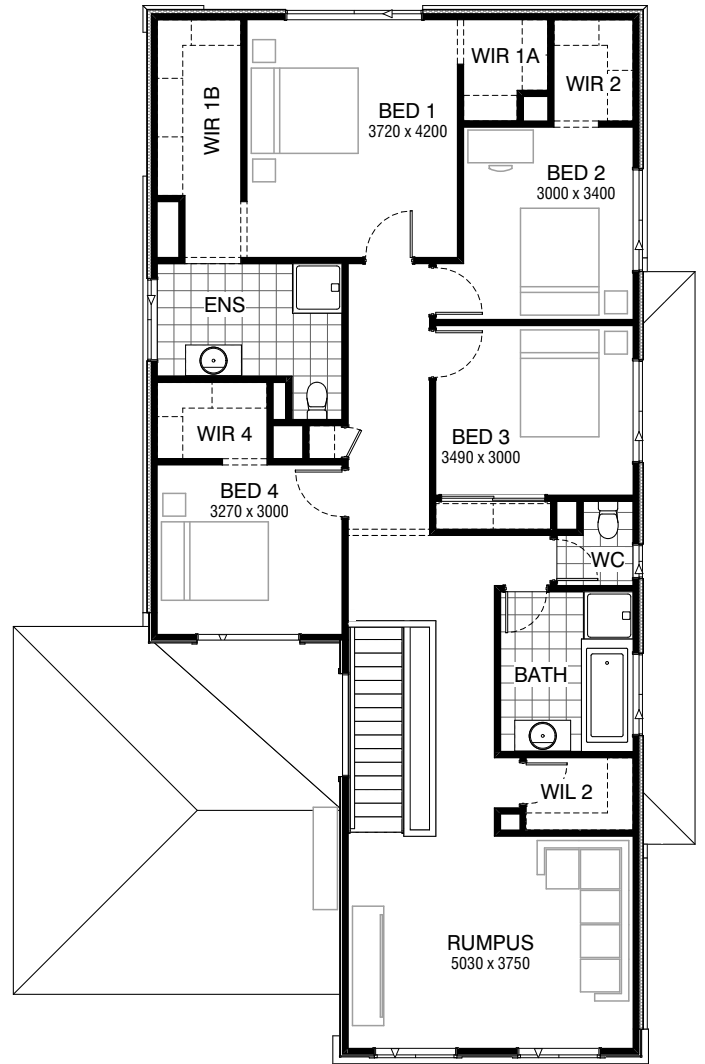


Total squares **34.1sq**

 **4**  **2.5**  **2**



GROUND FLOOR



FIRST FLOOR

FLOORPLAN OPTIONS

All available ready-to-go floorplan options for this design can be viewed on the following pages, or visit www.burbank.com.au.

Facades available:

Condor, Matisse, Monet, Aqua	
Hester, Metropolitan, Orana	
Rainforest	
Overall home width	11.99m
Overall home length	18.59m




Residence	260.8m ²	28.0sq
Garage	36.8m ²	4.0sq
Porch	4.0m ²	0.4sq
Alfresco	14.8m ²	1.6sq
Total	316.4m²	34.1sq

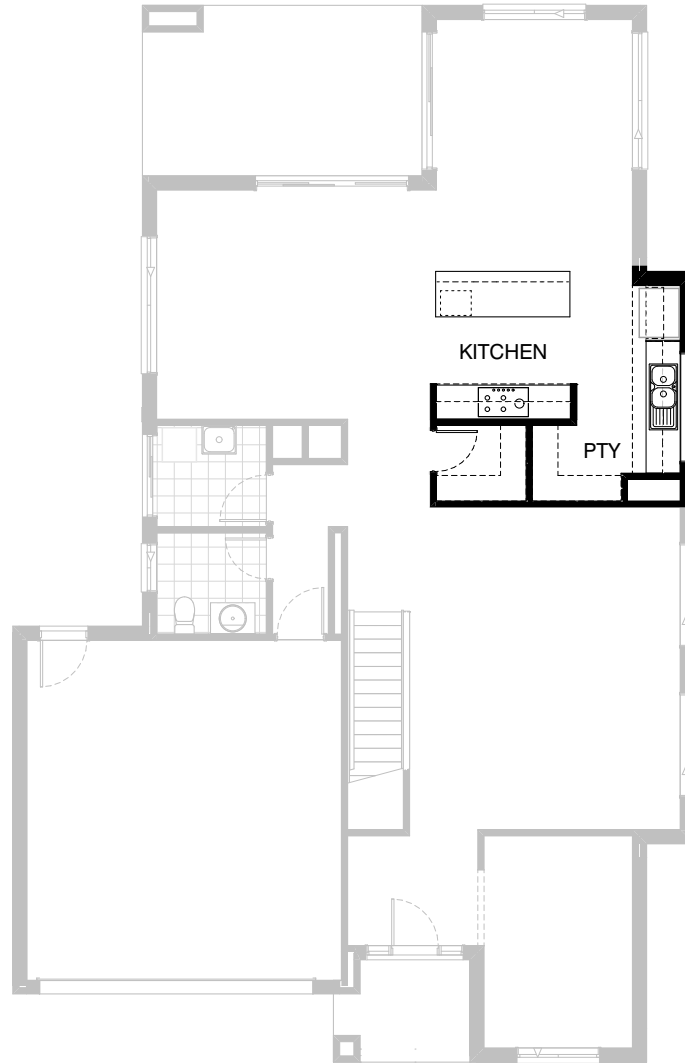
Listed details based on Condor façade floorplan (illustrated)

*Copyright conditions. All photos and illustrations are representative only. Floor plans and specifications may be varied by Burbank without notice, the dimensions are diagrammatic only and a Building Contract with final drawings will display correct dimensions and detail. All designs are the property of Burbank and must not be used, reproduced, copied or varied, wholly or in part without written permission from an authorised Burbank representative. Copyright Burbank Australia Pty Ltd. ABN 91 007 099 872. Builders Registration Number CDB-U-52603.

Call 13 BURBANK
Visit burbank.com.au

FLOORPLAN OPTIONS

 **4**  **2.5**  **2**



Option K-1




Provide Kitchen Upgrade with 1no. 350mm and 2no. 400mm and 2no. 700mm and 1no. 800mm and 1no. 900mm base cabinets.

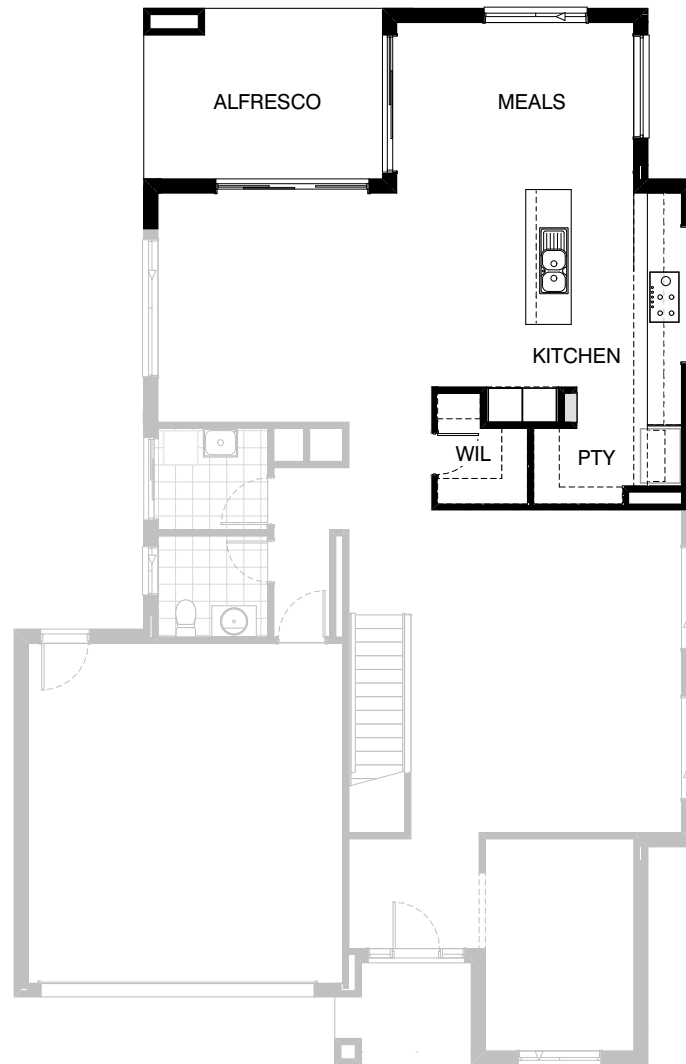
1no. 450mm drawer unit and 1no. laminated DW. provision.
1no. 450mm and 2no. 700mm and 2no. 900mm overhead cabinets.
1no. 632mm wide laminated MW. provision with pot drawer below.
1no. 900mm underbench oven with 900mm overhead cabinet with retractable rangehood.

1no. laminated open shelf above refrigerator space.

Provide 514mm x 1930mm aluminium fixed window in lieu of 1200mm x 1450mm aluminium fixed window.

FLOORPLAN OPTIONS


 **4**  **2.5**  **2**

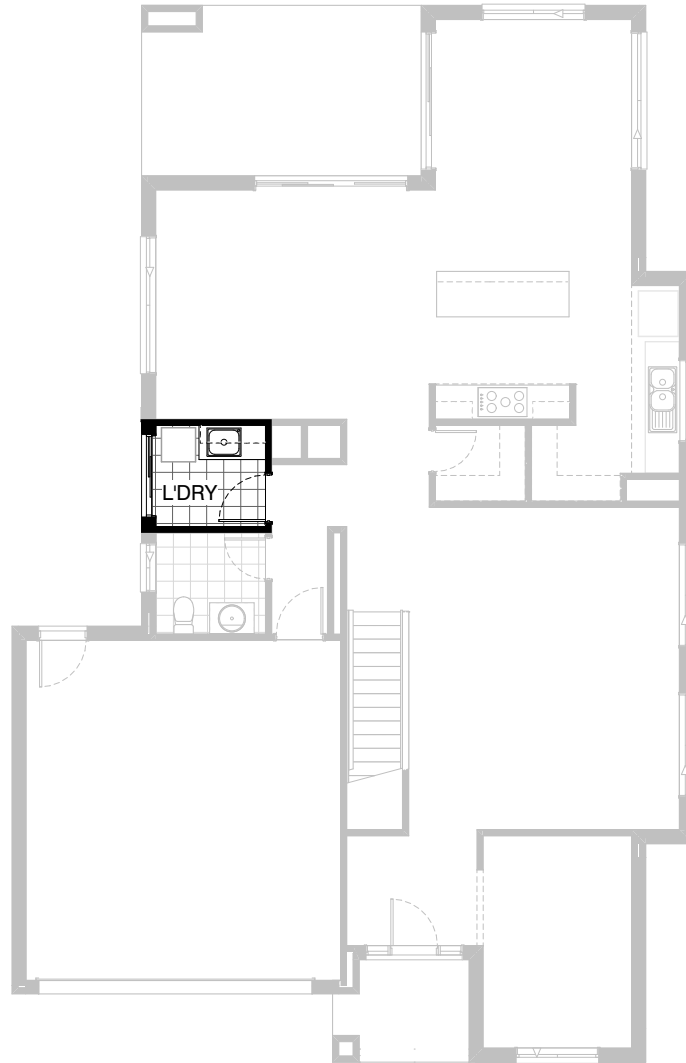


Option K-2

Provide Kitchen Upgrade by extending Kitchen external length wall by 1680mm to suit and include plaster lined bulkhead to projection.
Provide 1no. 300mm and 1no. 450mm and 5no. 900mm base cabinets.
1no. 450mm drawer unit and 1no. laminated DW. provision.
1no. 450mm and 3no. 900mm overhead cabinets.
1no. 900mm cook top and 1no. 900mm overhead cabinet with retractable rangehood. 2no. laminated wall oven / MW. towers.
1no. laminated open shelf above refrigerator space.
Provide 1520mm(h) x 510mm(w) x 220mm(d) plaster lined niche 910mm from floor level to Kitchen including 2no. 32mm laminated floating shelves.
Provide 1800mm x 1810mm aluminium fixed window to Meals in lieu of 1800mm x 2410mm aluminium sliding window.
Provide 514mm x 2410mm aluminium fixed window to Kitchen in lieu of 1200mm x 1450mm aluminium fixed window.
Increase width of meals by decreasing width of alfresco by 700mm

FLOORPLAN OPTIONS




 **4**  **2.5**  **2**

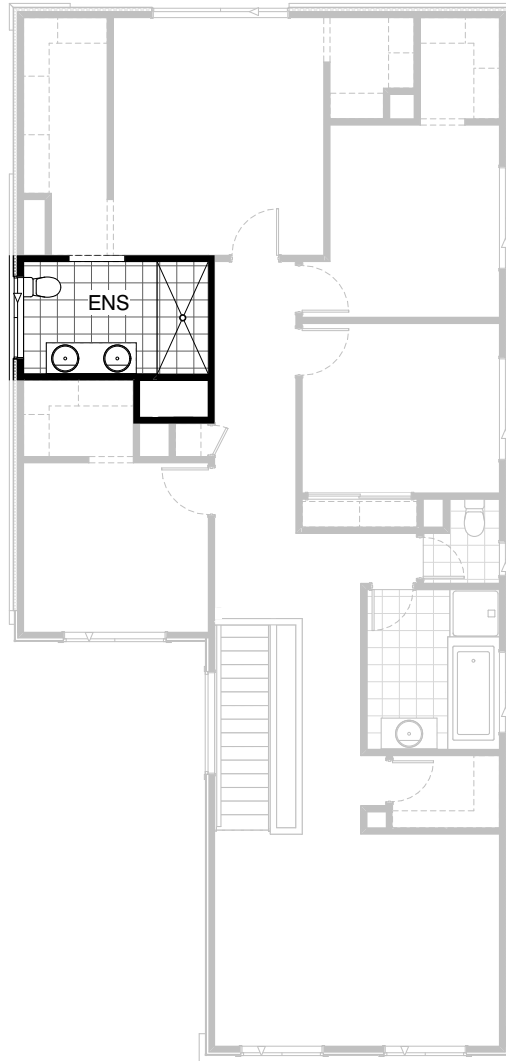


Option LD-1

Provide Laundry Upgrade with s.s. inset trough
in 32mm laminated bench top.
1no. 300mm and 1no. 800mm base cabinets,
1no. 300mm and 1no. 800mm overhead cabinets
and additional tiled splashback and bench top to suit.

FLOORPLAN OPTIONS




 **4**  **2.5**  **2**

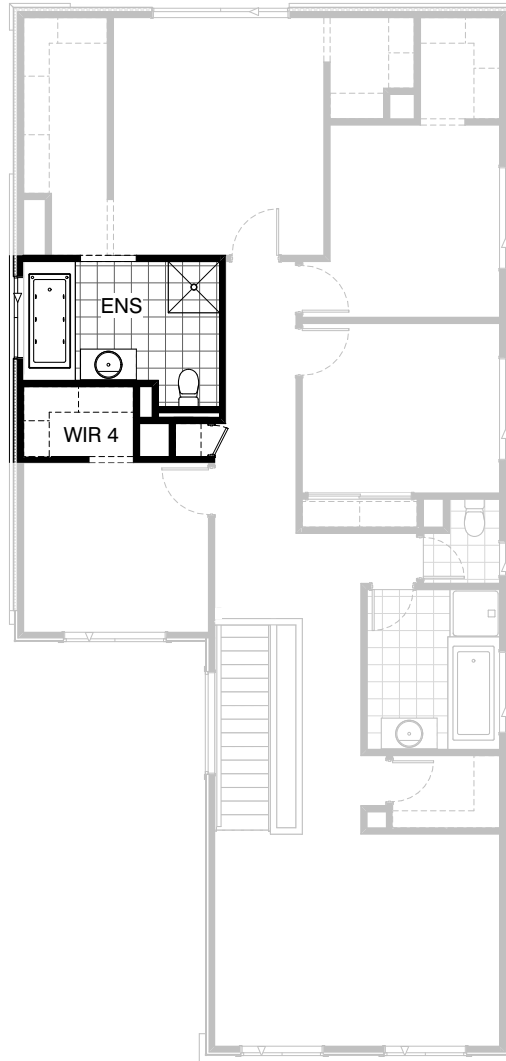


Option ENS-1 FF

Provide Ensuite Upgrade including additional wall to wall tiled shower base, 1no. 1582mm wide vanity unit with 2no. basins in lieu of standard. Relocate Ensuite opening and extend Void to suit.

FLOORPLAN OPTIONS




 **4**  **2.5**  **2**

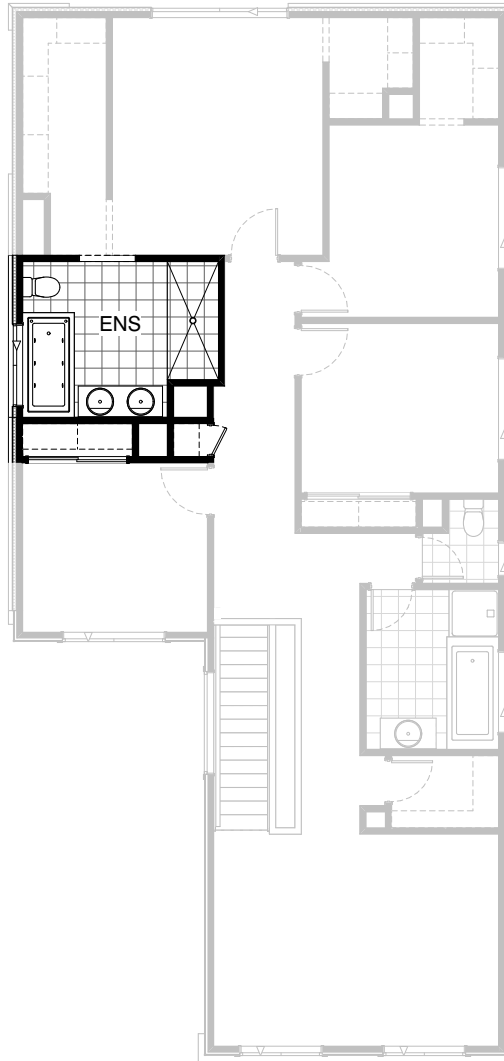


Option ENS-2 FF

Provide Ensuite Upgrade including additional
1675mm spa bath with tiled hob and tiled shower
base in lieu of standard.

FLOORPLAN OPTIONS




 **4**  **2.5**  **2**

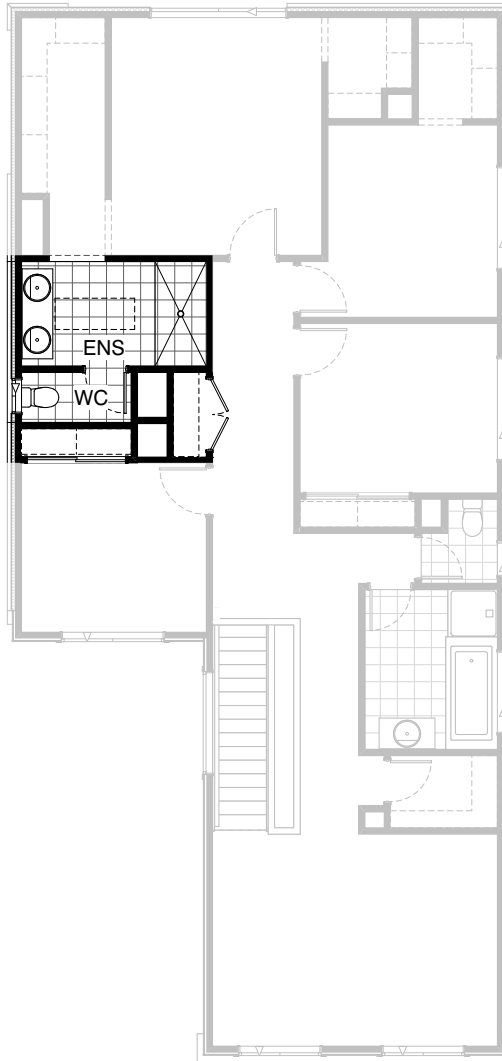


Option ENS-3 FF

Provide Ensuite Upgrade including additional
1no. 1675mm spa bath with tiled hob,
wall to wall tiled shower base, 1no. 1482mm wide
vanity unit with 2no. basins in lieu of standard.
Relocate Ensuite opening and WC and aluminium
sliding window to suit.
Delete W.I.R to Bed 4 and provide plaster
lined built robe with sliding robe doors.

FLOORPLAN OPTIONS

 **4**  **2.5**  **2**





Option ENS-4 FF

Provide Ensuite Upgrade by reducing Bed 4 W.I.R to standard robe including sliding robe door in lieu of standard. Increase Linen and provide 2no. 620mm flush panel hinged doors and additional shelving.

Provide separate WC including 1027mm x 610mm aluminium sliding window and 1no. 720mm flush panel hinged door.

Provide 1830mm x 900mm tiled shower base, 1no. 1582mm wide vanity unit with 2no. basins in lieu of standard and 550mm x 1400mm 'Velux' skylight in lieu of standard window.

FLOORPLAN OPTIONS




 **4**  **2.5**  **2**

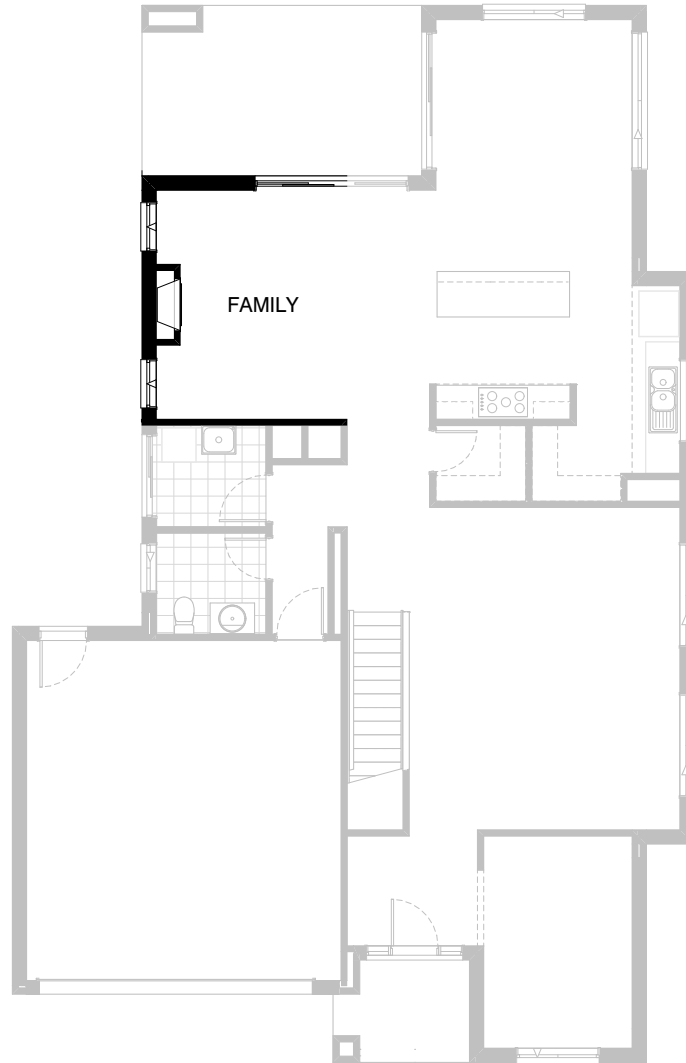


Option IP1-1 GF

Provide Guest Bedroom, Ensuite and W.I.R Option in lieu of standard Living. Provide additional 1no. 820mm and 2no. 720mm flush panel hinged doors.
Provide 1no. 900mm x 900mm polymarble shower base, 1no. toilet and 1no. 982mm wide vanity unit and 1no. 1027mm x 610mm aluminium sliding window to Ensuite.
Site built hanging rails / shelves to W.I.R.
2no. 1800mm x 610mm aluminium sliding windows to Guest Bedroom in lieu of standard.

FLOORPLAN OPTIONS




 **4**  **2.5**  **2**

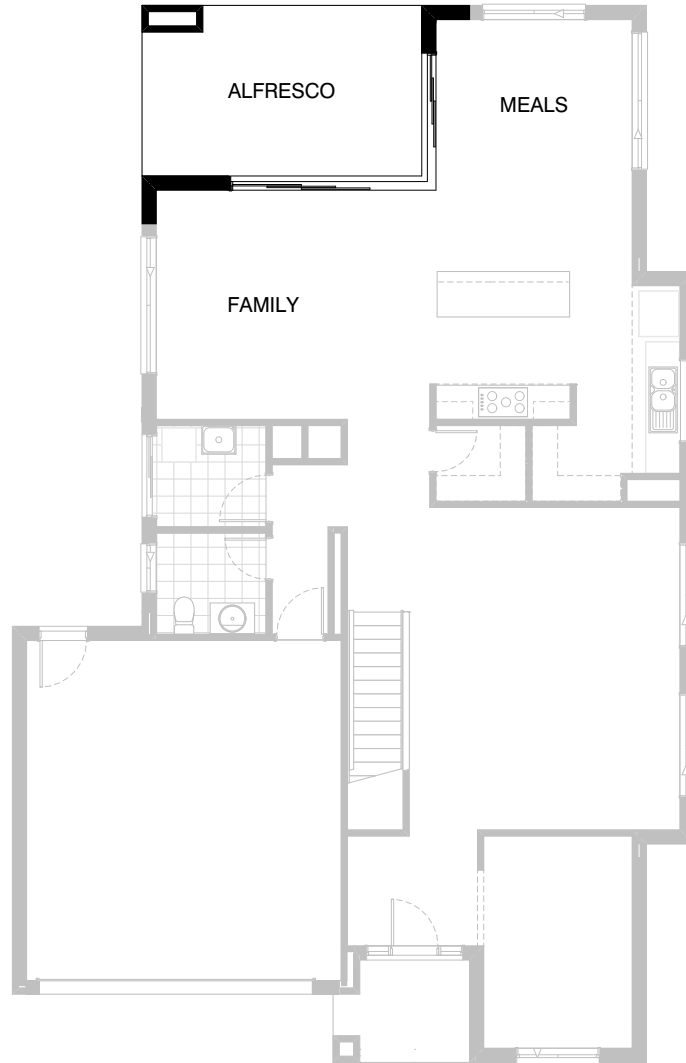


Option IP1-2 GF

Provide Jetmaster 3x Series gas fireplace, 400mm off floor level in a 1400mm x 420mm boxed out plaster wall with a 4 sided black fascia to Family room side wall.
Provide 2no. 1800mm x 850mm aluminium awning windows in lieu of standard 1no. 2057mm x 2410mm sliding window.

FLOORPLAN OPTIONS


 **4**  **2.5**  **2**

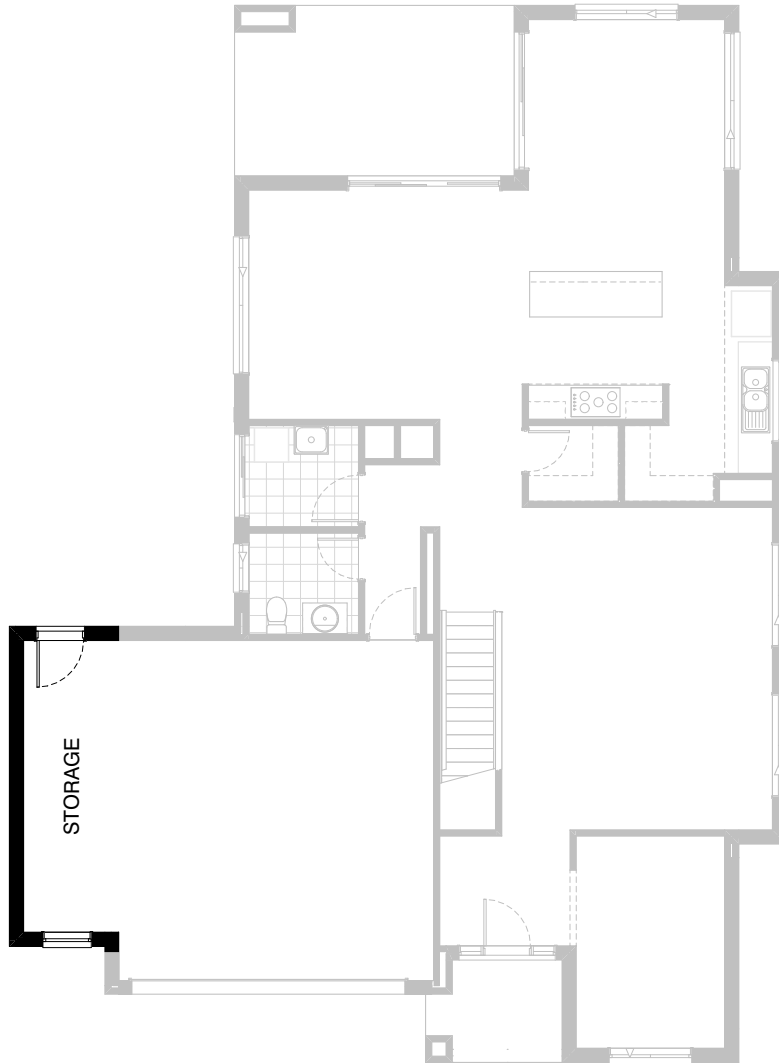


Option IP1-3 GF

Provide 1no. 2107mm high x 2410mm x 3610mm
corner stacker sliding door to Family / Meals
in lieu of standard.

FLOORPLAN OPTIONS


 **4**  **2.5**  **2**



Option G-1

Provide extension to Garage to create additional Storage area.
Provide additional 1800mm x 850mm aluminium fixed window.
Increases area by 9.45m².
Increases width by 1680mm.

FLOORPLAN OPTIONS




 **4**  **2.5**  **2**

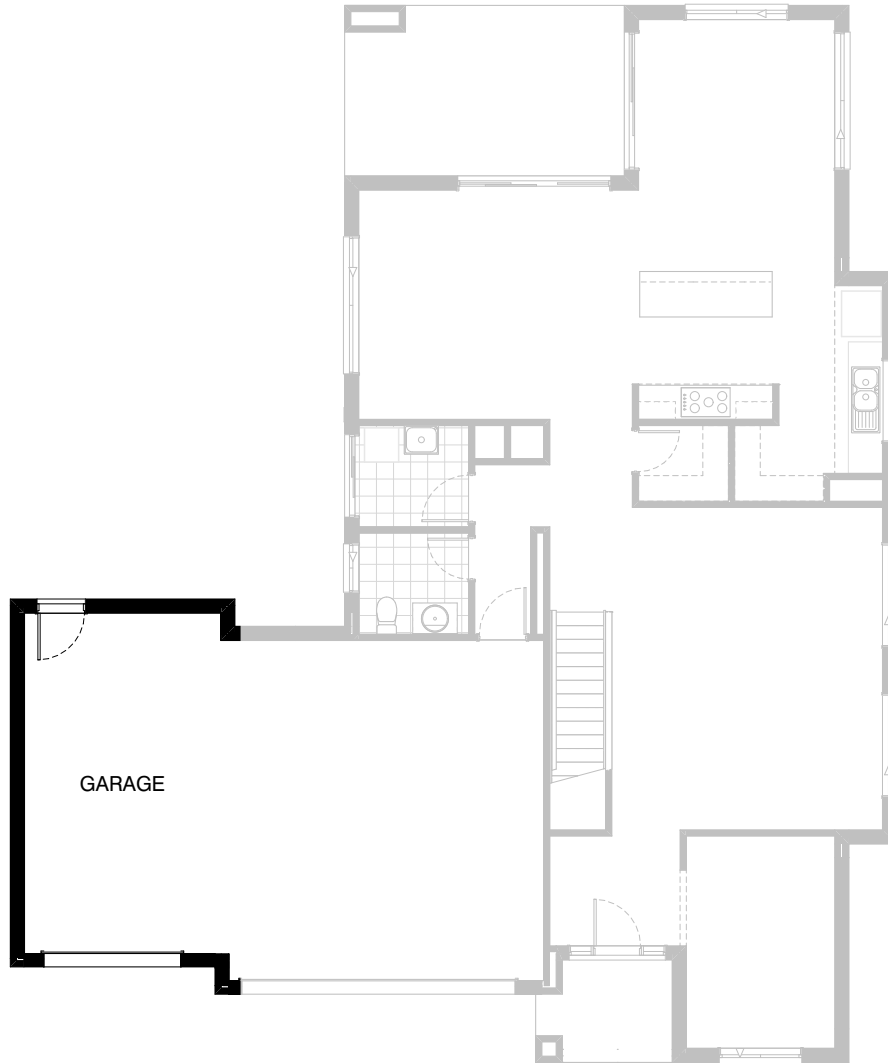


Option G-2

Provide extension to Garage to create additional Workshop area.
Provide additional 1800mm x 1450mm aluminium fixed window.
Increases area by 13.50m².
Increases width by 2400mm.

FLOORPLAN OPTIONS

 **4**  **2.5**  **2**



Option G-3

Provide triple car Garage including additional Garage door as per colour selection.
Provide pitched roof over Garage to all facades including additional downpipe.
Increases area by 23.48m².
Increases width by 3600mm.