

**Facades available:**

Callington, Harrogate, Kent

Lancaster, Sheffield, Swansea

Wiltshire, Eastwood

**Overall home width 7.07m**

**Overall home length 26.09m**

Residence 138.0m<sup>2</sup> 14.9sq

Garage 21.3m<sup>2</sup> 2.3sq

Porch 1.0m<sup>2</sup> 0.1sq

**Total 160.3m<sup>2</sup> 17.2sq**

Listed details based on Sheffield facade floorplan (illustrated)

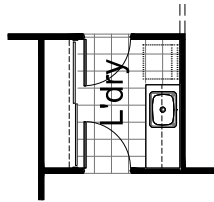
**FLOORPLAN OPTIONS**

We personalise our floorplans.

Talk to us about our huge range of ready-to-go design options or simply visit [www.burbank.com.au/south-australia](http://www.burbank.com.au/south-australia) for more details.

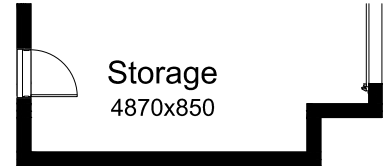
**OPTION LD1**

Provide laundry option with  
1 No. 800mm base cupboard,  
1 No. 600mm base cupboard,  
1 No. 800mm overhead cupboard,  
1 No. 600mm overhead cupboard,  
Additional benchtop and tiles to suit.



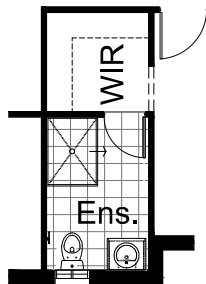
**OPTION G1**

Provide extension to Garage to  
create additional Storage area.  
Increases area by 4.55m<sup>2</sup>.  
Increases width by 850mm.



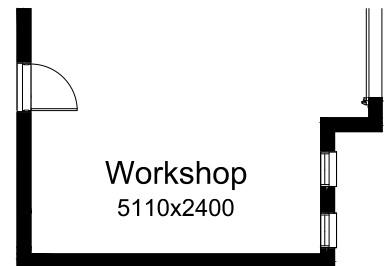
**OPTION ENS1**

Provide ensuite option by  
reducing WIR by 250mm,  
enlarge ENS by 250mm and include  
1no. 1200mm x 900mm shower.



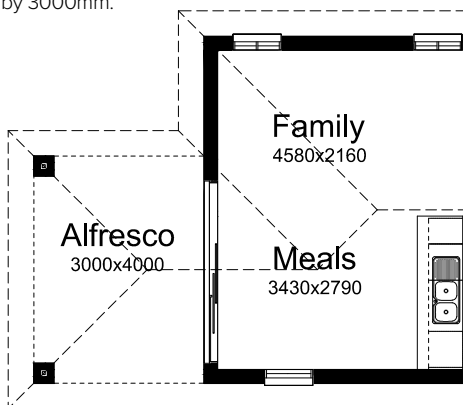
**OPTION G2**

Provide Workshop to Garage including  
2no. AAWF 1806 aluminium feature awning windows  
Increases area by 13.42m<sup>2</sup>.  
Increases width by 2400mm.



**OPTION EP1**

Provide 3000mm x 4000mm Alfresco to rear of  
Meals room with  
1no. ASD2132 aluminium sliding door to meals,  
2no. 350mm x 350mm brick piers on strip footings,  
Earth floor to Alfresco.  
Increases area by 12.0m<sup>2</sup>.  
Increases length by 3000mm.



**OPTION G3**

Provide double car Garage including  
1no. 2100mm x 4800mm garage door  
in lieu of standard.  
Increases area by 15.50m<sup>2</sup>.  
Increases width by 2410mm.

