

**FLOORPLAN OPTIONS**

We personalise our floorplans. Talk to us about our huge range of ready-to-go design options or simply visit [www.burbank.com.au/south-australia](http://www.burbank.com.au/south-australia) for more details.

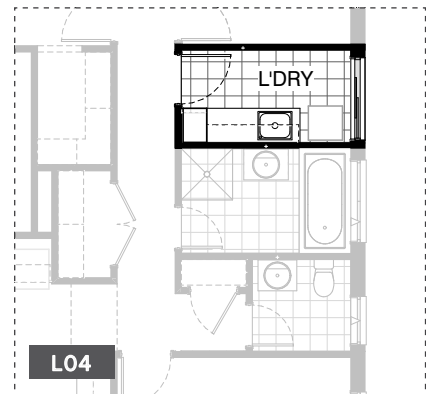
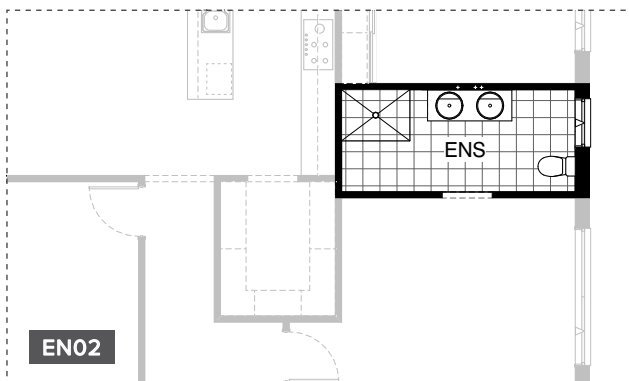
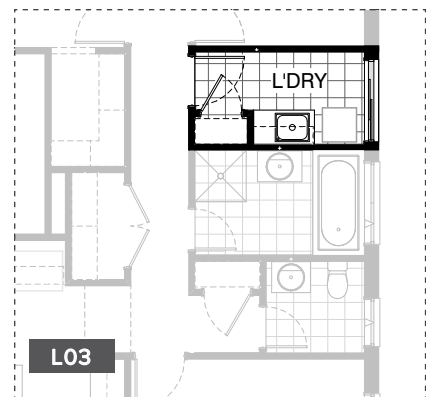
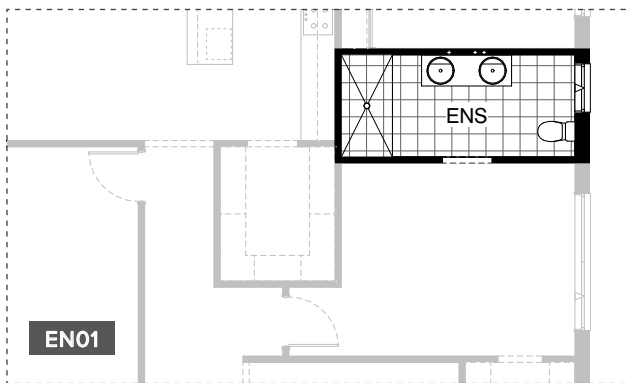
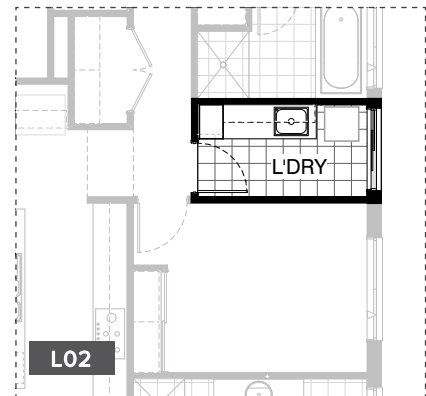
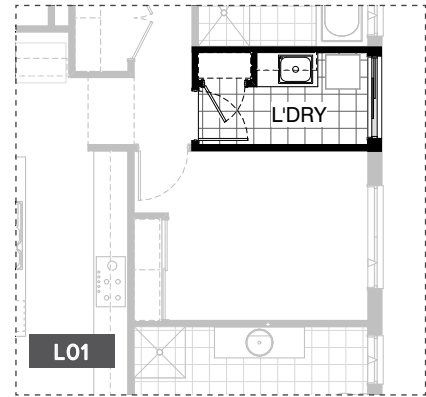
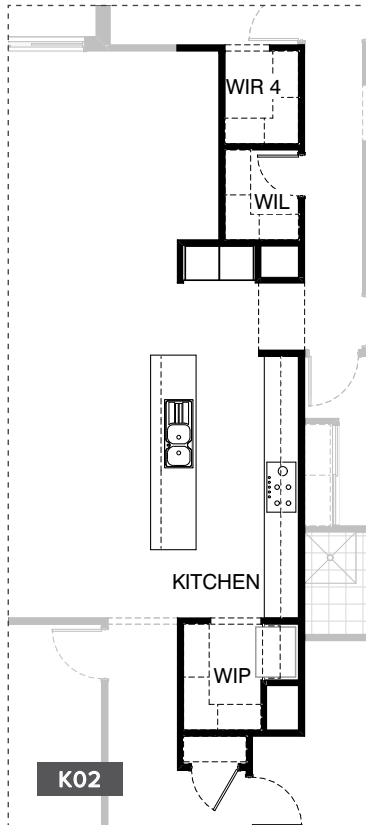
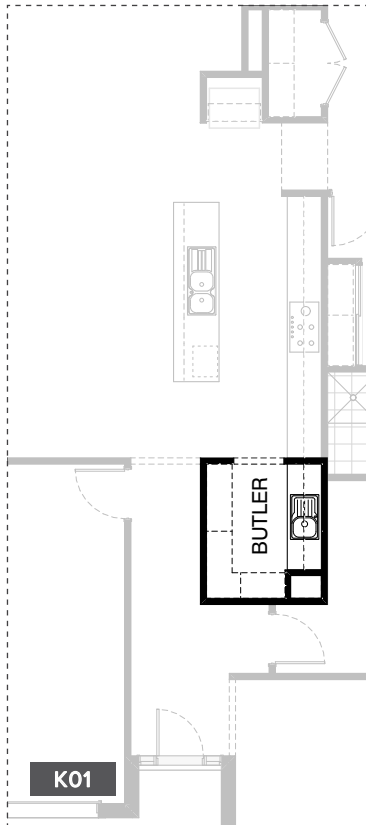
Listed details based on Sheffield facade floorplan (illustrated)

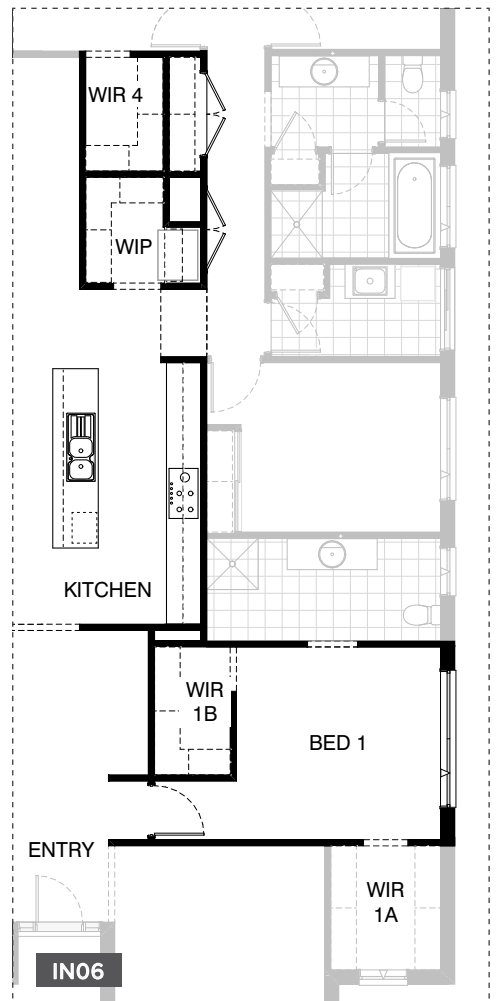
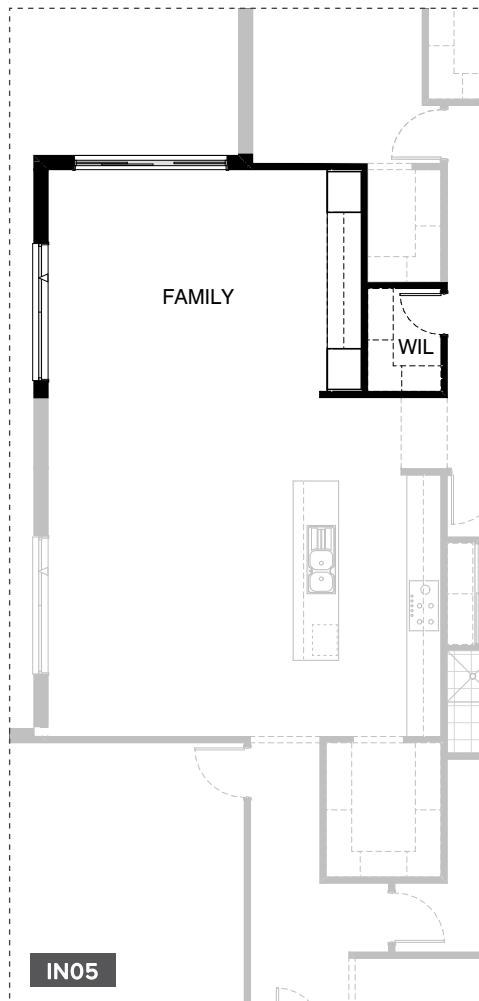
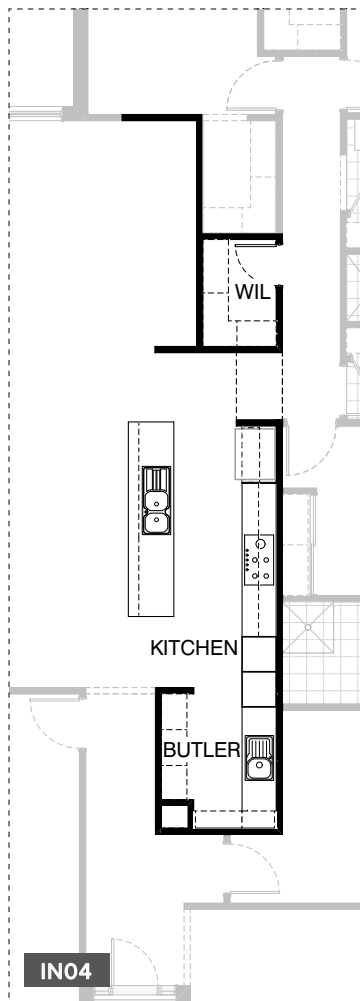
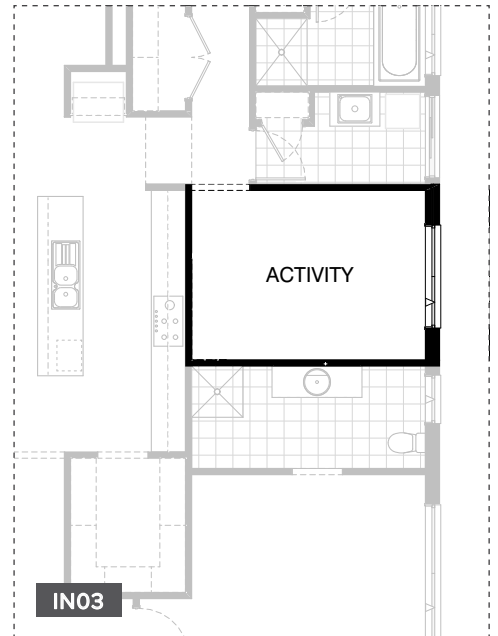
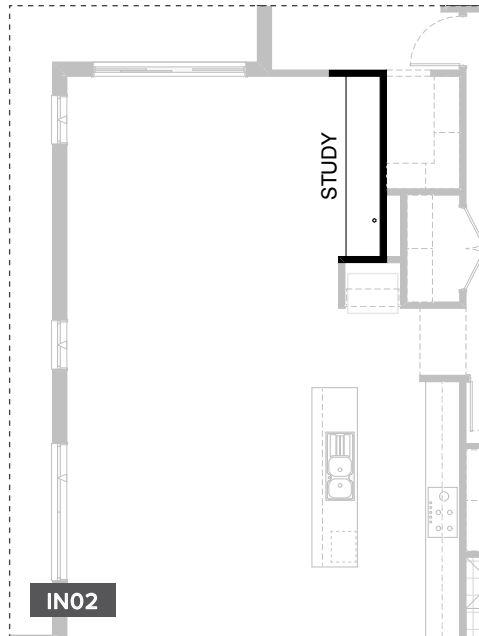
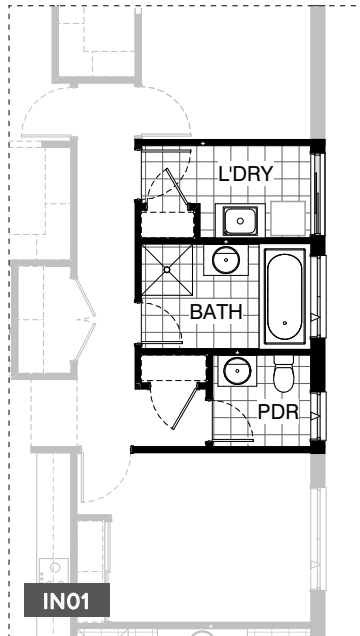
**Facades available:**

Sheffield, Aster, Eastwood,	
Hartford, Lancaster, Leawood,	
Newbury, Wiltshire	
<b>Overall home width</b>	<b>13.67m</b>
<b>Overall home length</b>	<b>21.71m</b>

Residence	198.0m <sup>2</sup>	21.3sq
Garage	36.5m <sup>2</sup>	3.9sq
Alfresco	11.2m <sup>2</sup>	1.2sq
Porch	6.4m <sup>2</sup>	0.7sq
<b>Total</b>	<b>252.1m<sup>2</sup></b>	<b>27.1sq</b>

\*Copyright conditions. All photos and illustrations are representative only. Floor plans and specifications may be varied by Burbank without notice, the dimensions are diagrammatic only and a Building Contract with final drawings will display correct dimensions and detail. All designs are the property of Burbank and must not be used, reproduced, copied or varied, wholly or in part without written permission from an authorised Burbank representative. Copyright Burbank Australia (SA) Pty Ltd. ABN 96 165 533 406. BLD 266709.





**OPTION DESCRIPTIONS****K01 - Kitchen Option 01**

Provide Butlers pantry upgrade with 32mm laminate benchtop, 1No. 900mm base cupboard, 2No. 450mm base cupboards, 2No. 900mm overhead cupboards, 4No. 450mm shelving including return and tiled splashback to suit.

**K02 - Kitchen Option 02**

Provide Kitchen upgrade with 5No. 900mm base cupboards and 2No. wall oven towers and relocated Ref. space to WIP. Tiled splashback to suit including returns. Removed MW provision to island bench and replaced with 900mm base cupboard. Provide Coats cupboard to Entry with 450mm hanging rail and shelf. Store becomes WIL and Bed 4 WIR reduced by 350mm.

**L01 - Laundry Option 01**

Provide Laundry upgrade with laminated inset trough, 1No. 700mm base cupboard, 1No. 300mm base cupboard, 1No. 700mm overhead cupboard, 1No. 300mm overhead cupboard with additional tiled splash back and benchtop to suit. Note: Option available with standard house layout & Internal03.

**L02 - Laundry Option 02**

Provide Laundry upgrade with laminated inset trough, 1No. 400mm Broom cupboard, 2No. 800mm base cupboards and 2No. 800mm overhead cupboards with additional benchtop and tiled splash back to suit. Note: Option available with standard house layout & Internal03.

**L03 - Laundry Option 03**

Provide Laundry upgrade with laminated inset trough, 1No. 700mm base cupboard, 1No. 300mm base cupboard, 1No. 700mm overhead cupboard, 1No. 300mm overhead cupboard with additional tiled splash back and benchtop to suit. Note: This option only available with Internal01.

**L04 - Laundry Option 04**

Provide Laundry upgrade with laminated inset trough, 1No. 400mm Broom cupboard, 2No. 800mm base cupboards and 2No. 800mm overhead cupboards with additional benchtop and tiled splash back to suit. Note: This option only available with Internal01.

**EN01 - Ensuite Option 01**

Provide Ensuite upgrade including: 1No. 1582mm vanity with double basins in lieu of standard, 900mm x 1780mm wall to wall tiled shower base in lieu of standard.

**EN02 - Ensuite Option 02**

Provide Ensuite upgrade including: 900mm x 1200mm tiled shower base in lieu of standard and 1No. 1482mm vanity unit with double basins in lieu of standard.

**IN01 - Internal Option 01**

Provide alternative layout to Laundry, Bath, WC & Vest. area. Layout includes Powder, Bath & Laundry. 900mm x 900mm tiled shower base to Bath, 1No. 782 vanity unit to Bath and 1No. 682 vanity unit to Powder. Second Linen to passage.

**IN02 - Internal Option 02**

Provide built in two seat desk option for Study with 1No. 600mm drawer unit and 600mm deep 32mm laminated benchtop. Note: Option available with Kitchen02 but space is increased in size by 150mm.

**IN03 - Internal Option 03**

Provide alternative layout to make three Bedrooms in lieu of standard by replacing Bed 2 with Activity. Provide bulkhead to Activity entry with 1No. 1800mm x 1810mm aluminium awning window in lieu of standard.

**IN04 - Internal Option 04**

Provide Kitchen & Butlers pantry with 2No. 600mm wall oven towers and 4No. 900mm base cupboards, 2No. 900mm overhead cupboards, 1No. 900mm cooktop with retractable rangehood and tiled splashback to suit. 2No. 450mm base cupboards with 1800mm high open adjustable and fixed shelves and 4No. 450mm shelves. 1No. single bowl sink with drainer and tiled splashback to suit in Butlers. Store to be converted into WIL.

**IN05 - Internal Option 05**

Provide Family room upgrade with 2No. 700mm laminated cupboards, 3No. 800mm joinery units with 32mm laminated benchtop and 3No. overhead joinery units. WIL is reduced in width by 70mm. Provide 1No. 514mm x 2410mm aluminium awning window to Family in lieu of standard. Note: Option only available with Internal04 and also this option removes Study Nook.

**IN06 - Internal Option 06**

Provide alternate layout with WIP relocated to opposite side of Kitchen. Relocate Ref. space to WIP. Relocate Study to Entry and provide additional WIR to Bed 1. Note: This option reduces Bed 1 by 520mm.