

**FLOORPLAN OPTIONS**

We personalise our floorplans. Talk to us about our huge range of ready-to-go design options.

**Facades available:**

Barrine, Mackay	
Lonsdale, Corella	
<b>Overall home width</b>	<b>10.31m</b>
<b>Overall home length</b>	<b>16.91m</b>

Residence	277.4m <sup>2</sup>	29.9sq
Garage	36.1m <sup>2</sup>	3.9sq
Porch	4m <sup>2</sup>	0.4sq
Alfresco	15.5m <sup>2</sup>	1.7sq
<b>Total</b>	<b>333m<sup>2</sup></b>	<b>35.9sq</b>

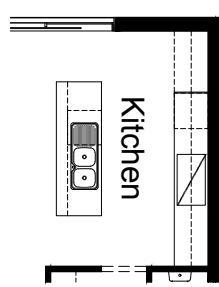
Listed details based on Barrine facade floorplan (illustrated)

\*Copyright conditions. All photos and illustrations are representative only. Floor plans and specifications may be varied by Burbank without notice, the dimensions are diagrammatic only and a Building Contract with final drawings will display correct dimensions and detail. All designs are the property of Burbank and must not be used, reproduced, copied or varied, wholly or in part without written permission from an authorised Burbank representative. Copyright Burbank Australia (NSW) Pty Ltd. ABN 88 610 822 770. NSW BL 295627C ACT BL 2016566.

**Call 13 BURBANK**  
**Visit [burbank.com.au](http://burbank.com.au)**

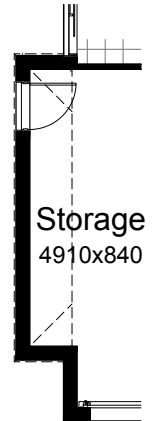
**OPTION K1**

Provide Kitchen upgrade with laminated open shelf above refrigerator space, 1no. laminated MW provision, 2no. 450mm base cupboards, 1no. 600mm pot drawers, 2no. 700mm overhead cupboards, 2no. 350mm overhead cupboards, Island bench remains unchanged.



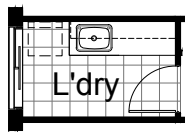
**OPTION G1**

Provide extension to Garage to create additional Storage area. Provide pitched roof and lightweight cladding (Scyon Stria) above. Increases area by 4.52m<sup>2</sup>. Increases width by 840mm.



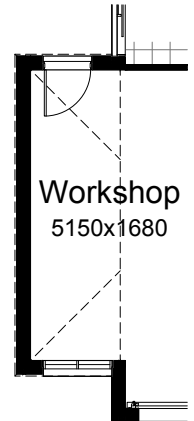
**OPTION LD1**

Provide Laundry Option with additional inset laminated trough, 2no. 900mm base cupboards, 2no. 900mm overhead cupboards and additional tiled splash back and bench top to suit. NOTE: This Option not to be used with Option G-3



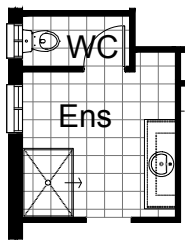
**OPTION G2**

Provide extension to Garage to create Workshop area including additional window to suit. Provide pitched roof and lightweight cladding (Scyon Stria) above. Increases area by 9.45m<sup>2</sup>. Increases width by 1680mm.



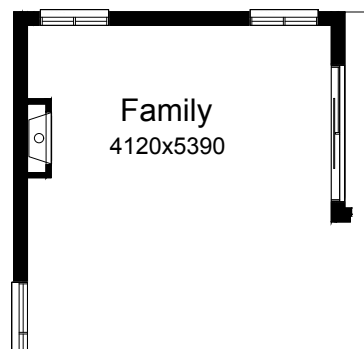
**OPTION ENS1**

Provide Ensuite upgrade with additional site built plaster lined walls to WC with 1no. 720mm flush panel hinged door, 1no. 1027mm x 610mm aluminium sliding window, 1200mm x 900mm tiled shower base, 1582mm wide vanity unit and 1no. 1800mm x 850mm aluminium sliding window in lieu of standard.



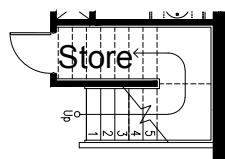
**OPTION IP1**

Provide Jetmaster SL-350 gas fireplace, 400mm off floor level in a 1400mm x 420mm sided black fascia to Family room side wall.



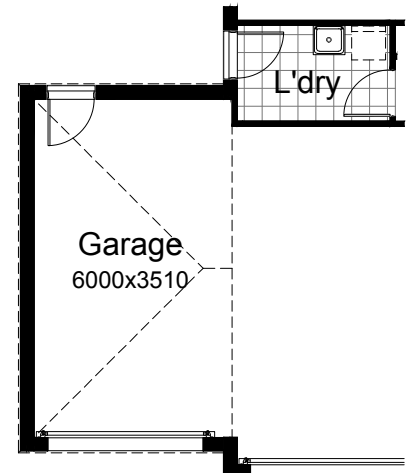
**OPTION IP2**

Provide Store to under side of staircase with additional 1no. 720mm flush panel hinged door.



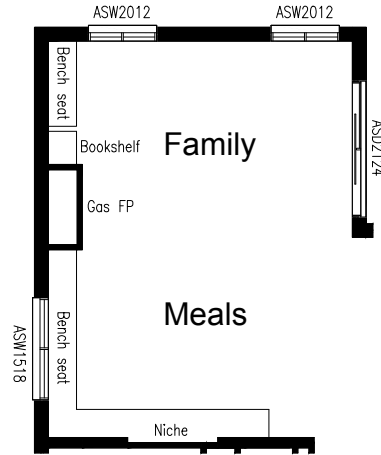
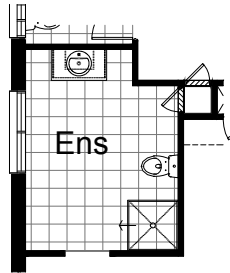
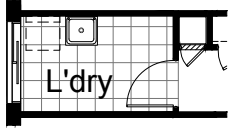
**OPTION G3**

Provide triple car Garage with pitched roof and lightweight cladding (Scyon Stria) above, additional Garage door as per colour selection and additional 1no. 2105mm x 850mm external hinged door in lieu of standard 2110mm x 1450mm aluminium sliding door to Laundry. Increases width by 3600mm. Increases area by 23.29m<sup>2</sup>. NOTE: This Option not to be used with Option LD-1



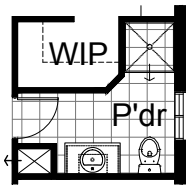
**OPTION IP3**

Provide Laundry Chute.



**OPTION IP4**

Provide Powder upgrade with additional 900mm x 900mm tiled shower base, relocate hinged door, toilet and vanity basin to suit and increase WIP by 100mm and angle stud wall to suit.



**OPTION IP5**

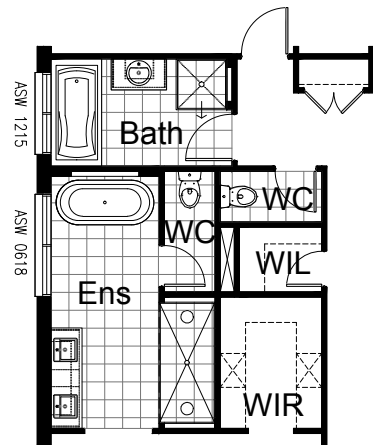
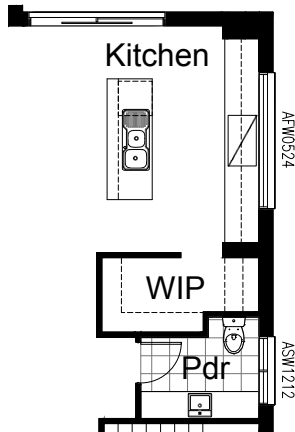
Provide Family/Meals upgrade with gas fire place with horizontal cladding, built-in bench seating with feature panelling, book shelf, TV provision with feature drawers and timber framed niche.

Note: Option as per Display @ Lot 1174 Popple Way, Calderwood Valley.

**OPTION K2**

Provide Kitchen upgrade with AFW0524 window in lieu of splash back, refrigerator relocated to Walk-in Pantry with 900mm overhead cupboard above. 150mm deep bulkhead over 20mm stone wall bench, 2No. 600mm overhead cupboards, 2No. 700mm overhead cupboards, 2No. 600mm base cupboards and 2No. 700mm base cupboards and 2No. 600mm base cupboards, dishwasher provision, microwave provision with pot drawer. Powder layout changed to suit with built-in vanity including open shelves and hinged doors and ASW1212 window in lieu of standard.

Note: Option as per Display @ Lot 1174 Popple Way, Calderwood Valley.



**OPTION ENS2**

Provide Ensuite upgrade option by relocating WC, adding Walk-in Linen and changing the Bath door orientation. Options includes enclosed WC to Ensuite, free-standing 1675mm bath with laminated niche opening, 2150mm wide tiled shower base with 2No. tiled niches at either end, 150mm bulkhead over shower with 2No. flush shower roses over, 1782mm vanity with open shelves and double basins. New layout to Walk-in Robe includes 2No. 600mm wide laminated drawer units. Replace ASW1215 window with ASW0618 as shown.

Note: Option as per Display @ Lot 1174 Popple Way, Calderwood Valley.



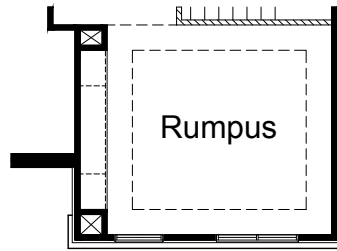
**OPTION EP1**

Provide extended Alfresco including 350x350mm brick pier, structural concrete slab with 450mm extra width.

Note: Option as per Display @ Lot 1174 Popple Way, Calderwood Valley.

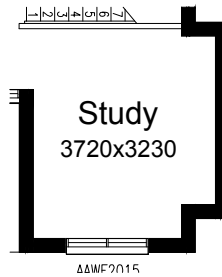
**OPTION IP6**

Provide Rumpus option with 450mm wide voids with 260mm deep bulkhead over, built-in cabinetry and TV provision to create entertainment centre. Also includes 150mm deep 450mm wide bulkhead around room perimeter.  
Note: Option as per Display @ Lot 1174 Popple Way, Calderwood Valley.



**OPTION IP7**

Provide Study option by extending Study wall width by 600mm with brick parapet flat roof above. Increases area by 2.08m<sup>2</sup>. Increases width by 600mm.



**OPTION ENS3**

Provide Ensuite upgrade with 1no. wall to wall tiled shower base, 1no. 1582mm wide vanity unit with 2no. basins in lieu of standard and 1no. 1800mm x 610mm aluminum sliding window in lieu of standard. Provide additional site built plaster lined Linen cupboard with 3no. shelves and 1no. 520mm flush panel hinged door to suit and site built plaster lined WC with 1no. 720mm flush panel hinged door and 1no. 1027mm x 610mm aluminium sliding window to suit.

