

**FLOORPLAN OPTIONS**

We personalise our floorplans. Talk to us about our huge range of ready-to-go design options.

**Facades available:**

Ashley, Atherton, Camden, Holton  
Kelsey

**Overall home width 14.39m**

**Overall home length 23.39m**

Residence	215.8m <sup>2</sup>	23.2sq
Garage	36.3m <sup>2</sup>	3.9sq
Porch	4.7m <sup>2</sup>	0.5sq
Alfresco	22.6m <sup>2</sup>	2.4sq
<b>Total</b>	<b>279.4m<sup>2</sup></b>	<b>30.1sq</b>

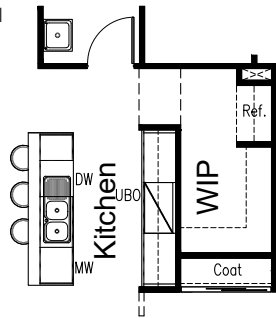
Listed details based on Ashley facade floorplan (illustrated)

\*Copyright conditions. All photos and illustrations are representative only. Floor plans and specifications may be varied by Burbank without notice, the dimensions are diagrammatic only and a Building Contract with final drawings will display correct dimensions and detail. All designs are the property of Burbank and must not be used, reproduced, copied or varied, wholly or in part without written permission from an authorised Burbank representative. Copyright Burbank Australia (NSW) Pty Ltd. ABN 88 610 822 770. NSW BL 295627C ACT BL 2016566.

**Call 13 BURBANK**  
**Visit burbank.com.au**

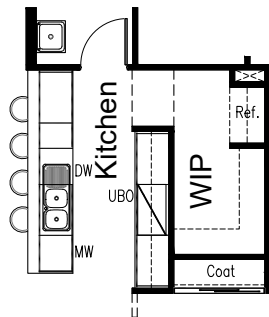
**OPTION K-1**

Provide Kitchen upgrade option with additional microwave provision and 900mm open shelf above the refrigerator. Kitchen island now includes 450mm drawer unit, dishwasher provision, microwave provision with pot drawer, 1No. 900mm base cupboard, and bench top to suit. Kitchen fit out to Internal wall (elevation C) to remain standard.



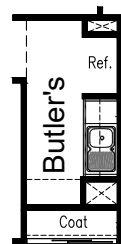
**OPTION K-2**

Provide Kitchen upgrade option with galley style benchtop including. Kitchen island now include microwave provision with pot drawer, dishwasher provision, 2No. 900mm base cupboard, 1No. 450mm drawer unit and 1No. 900mm open shelf above fridge space. Kitchen fit out to Internal wall (elevation C) to remain standard. Note: Additional 90mm stud wall behind the Laundry's Linen required to provide space for Kitchen island to butt into the wall.



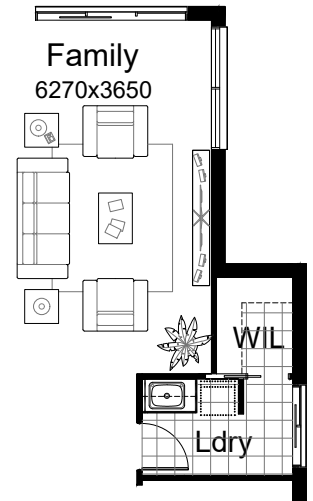
**OPTION K-3**

Provide Butler's Panty in lieu of Walk In Pantry with 1no. 900mm base cupboards, 1no. 400mm base cupboard 1no. 900mm overhead cupboards, 1no. 400mm overhead cupboard, 1no. single bowl sink with drainer, additional tiled splashback and bench top to suit.



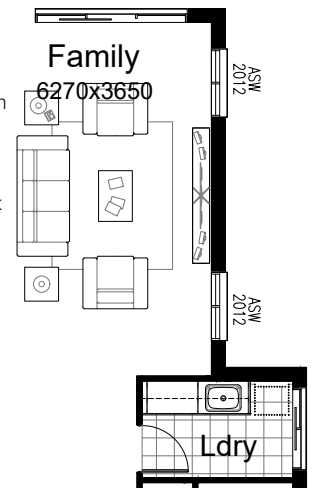
**OPTION LD-1**

Provide Laundry upgrade option with Walk in Linen, laminate base cupboards and stainless steel inset trough including: 1No. 800mm base cupboards, 1No. 800mm overhead cupboards, additional bench top and tiled splashback to suit.



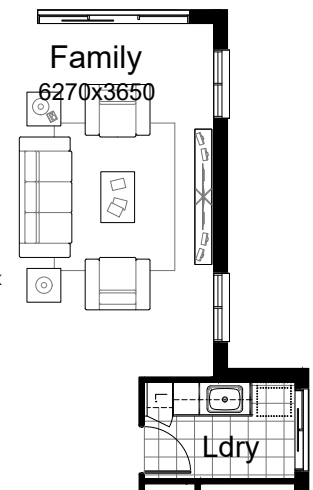
**OPTION LD-2**

Provide Laundry upgrade option with laminate base cupboards and stainless steel inset trough including: 2No. 900mm base cupboards, 2No. 900mm overhead cupboards, additional bench top and tiled splashback to suit. Provide 2No. ASW 2012 sliding windows to Family area ILO standard. Note: -Option removes the WIL and convert the Coat to Linen. -Option is not available with Kelsey & Camden Facades



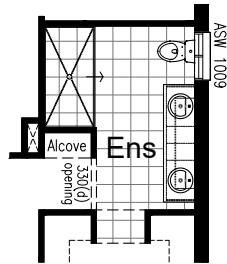
**OPTION LD-3**

Provide Laundry upgrade option with laminate base cupboards and stainless steel inset trough including: 1No. 900mm base cupboard, 1No. 450mm base cupboard, 1No. 900mm overhead cupboard, 1No. 450mm overhead cupboard, 1No. full height Linen with 5No. 450mm shelves, additional bench top and tiled splashback to suit. Provide 2No. ASW 2012 sliding windows to Family area ILO standard. Note: -Option removes the WIL and convert the Coat to Linen. -Option is not available with Kelsey & Camden Facades



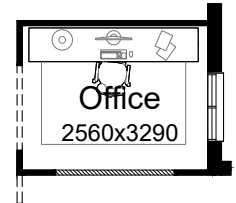
**OPTION ENS-1**

Provide Ensuite upgrade option with rearranged layout including 900x1800mm tiled shower base and 2082mm double vanity. Option also provides ASW1009 sliding window above toilet in lieu of standard.



**OPTION IP1-3**

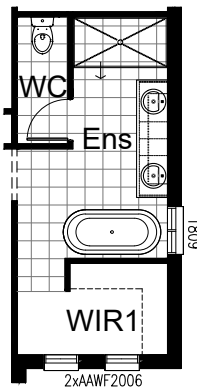
Provide 2100mm(w) x 1130mm(h) Office wall opening ILO standard.



**OPTION ENS-2**

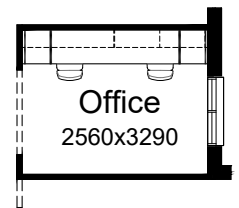
Provide Ensuite upgrade option with rearranged layout including 900x1680mm tiled shower base and 2082mm double vanity in lieu of standard. Option also provides ASW1809 sliding window, enclosed WC with 729 hinged door and freestanding bath.

Note:  
-Alcove removed.  
-WIR 1 to be rear



**OPTION IP1-4**

Provide built-in joinery option to Office including:  
600mm deep 32mm laminate bench top, 2No. 800mm overheads cupboards, 2No. 450mm open shelves unit and 2No. 300mm deep open shelves, 2No. 450mm drawer units under desk.

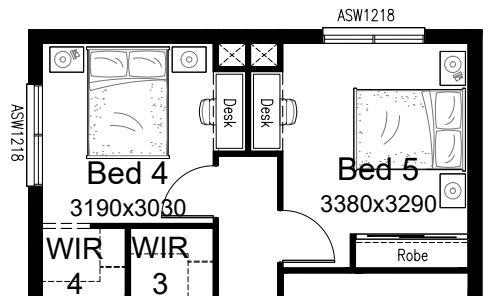
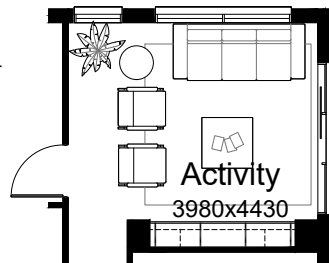


**OPTION IP1-5**

Convert Activity to Bed 5 with additional built-in Robe with sliding doors and 450mm shelf with hanging rail.  
Provide 920mm wide flush panel hinged door and 2No. alcoves with bulkhead over to Bed 5 and 4.  
Note:  
Remove ASD2127 sliding door, ASW0524 sliding window and AFW1809 fixed window and provide ASW1218 sliding window.

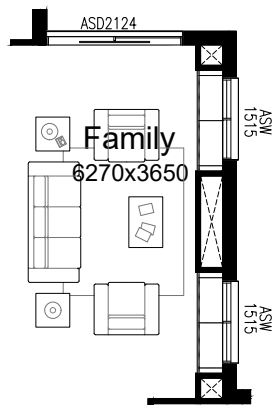
**OPTION IP1-1**

Provide built-in joinery option to Activity room including: 450mm deep 32mm laminate bench top, 3No. 800mm TV cupboard cabinet units, 2No. 450mm open shelves unit and 2No. 300mm deep open shelves above. Option provides 2No. 400x480mm voids.



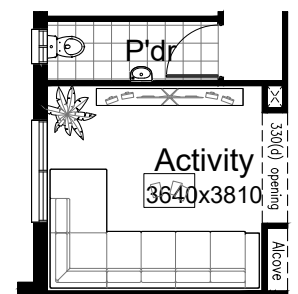
**OPTION IP1-2**

Provide built-in joinery option to Family room including:  
450mm deep 32mm laminate bench tops, 4No. 800mm TV cupboard cabinet units, 2No. ASW1515 sliding windows ILO standard. Option also provides 2No. 450x480mm and 1No. 1800x480mm voids.  
Notes:  
-This option is only available in conjunction with LD-1 and LD-2 options.  
-This option is NOT available in conjunction with Kelsey & Camden facade.  
-Sliding door to be reduced to ASD2124 ILO standard.



**OPTION IP1-6**

Provide Activity room option in lieu of Bed 2:  
Alcove to be reduced to suit.  
Notes:  
-With this option remaining with 3 bedrooms. If the client wants 4 Bedrooms they have to choose option IP1-5  
-Rearrange Powder with wall-mounted vanity ILO standard.

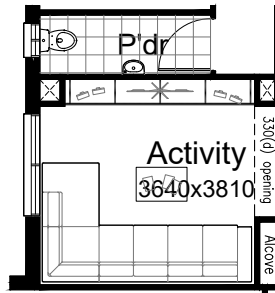


**OPTION IP1-7**

Provide built-in joinery option to Activity room including: 450mm deep 32mm laminate bench top, 4No. 800mm TV cupboard cabinet units, 2No. 450mm open shelves unit and 2No. 300mm deep open shelves above. Alcove to be reduced to suit.

Notes:

--This option is only available in conjunction with IP-6 option.



**OPTION IP1-8**

Provide option which raises a section of the Family/Meals ceiling by 300mm

