



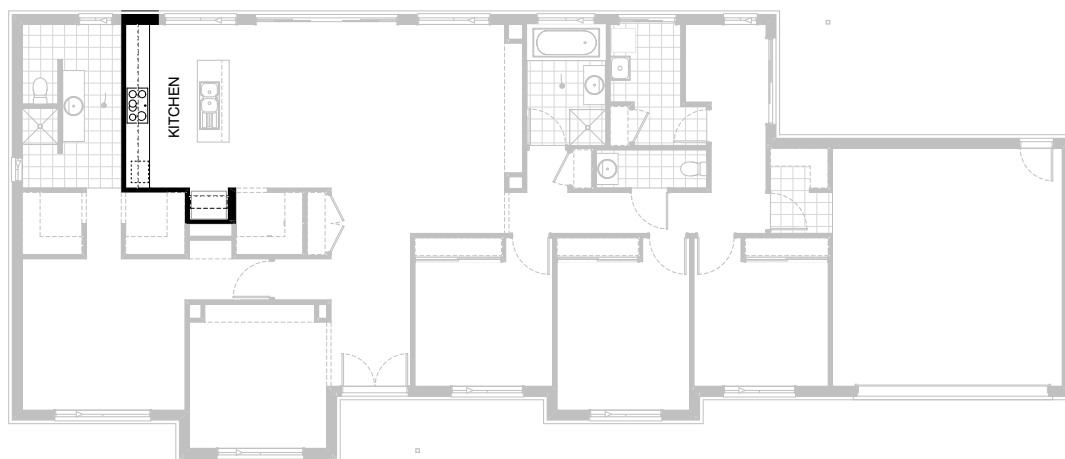
FLOORPLAN OPTIONS

We personalise our floorplans. Talk to us about our huge range of ready-to-go design options.

Facades available:	Residence	243.2m ²	26.2sq
	Garage	39.1m ²	4.2sq
	Porch	3.5m ²	0.4sq
	Alfresco	14.3m ²	1.5sq
	Verandah	4.7m ²	0.5sq
Overall home width	26.63m	Total	265.6m ² 28.6sq
Overall home length	14.65m		

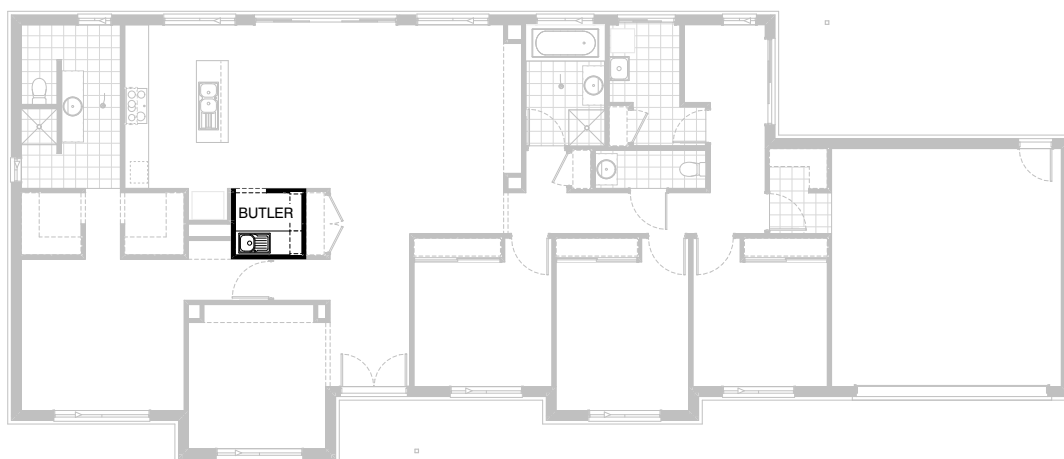
Listed details based on Traditional facade floorplan (illustrated)

*Copyright conditions. All photos and illustrations are representative only. Floor plans and specifications may be varied by Burbank without notice, the dimensions are diagrammatic only and a Building Contract with final drawings will display correct dimensions and detail. All designs are the property of Burbank and must not be used, reproduced, copied or varied, wholly or in part without written permission from an authorised Burbank representative. Copyright Burbank Australia (QLD) Pty Ltd. ABN 77 103 014 615. QBCC 1046544.



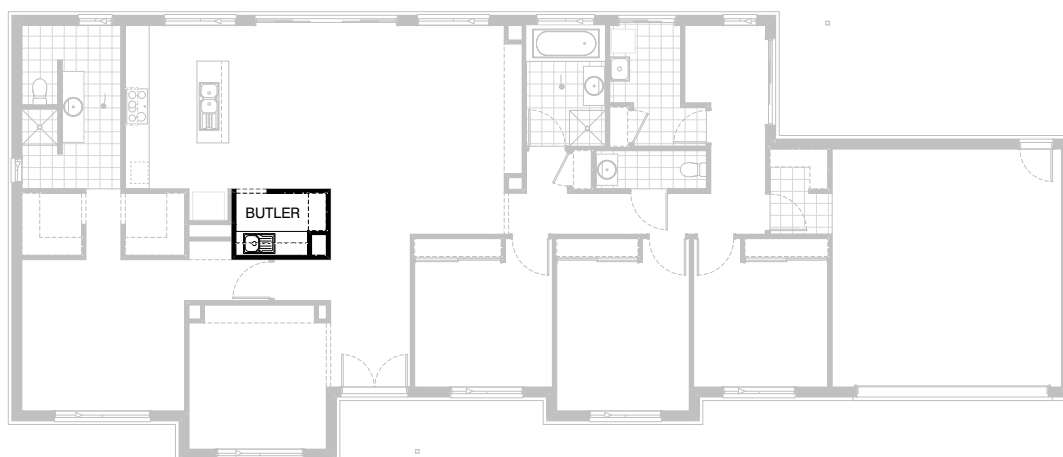
Option Kitchen01

Provide Kitchen upgrade option including:
900mm open shelf over refrigerator space,
2No. 900mm overhead cupboards,
2No. 600mm overhead cupboards.
Kitchen cabinetry to island remains unchanged.



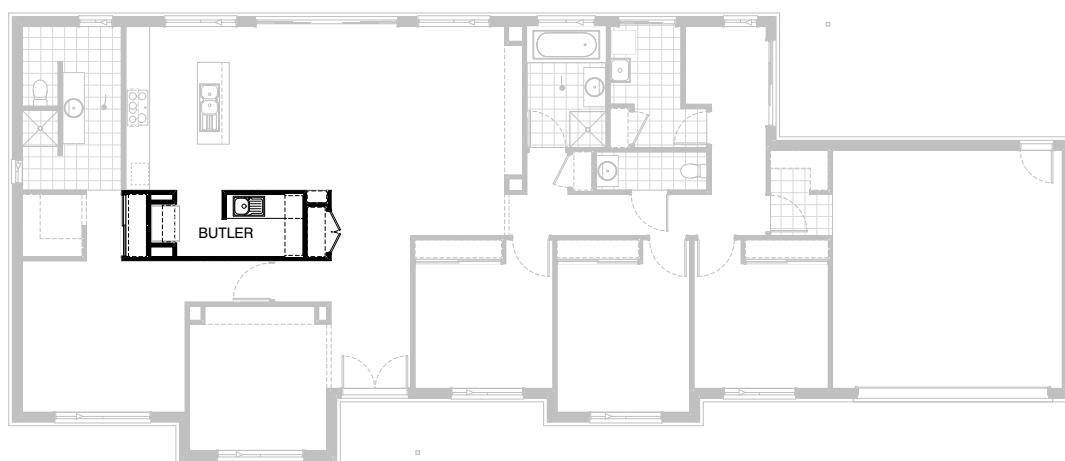
Option Kitchen02

Provide Butler's Pantry in lieu of Walk-in Pantry including:
 1No. 900mm base cupboard,
 1No. 400mm base cupboard,
 1800mm high 300mm deep open shelving unit,
 single bowl sink,
 additional benchtop and tiled splashback to suit.



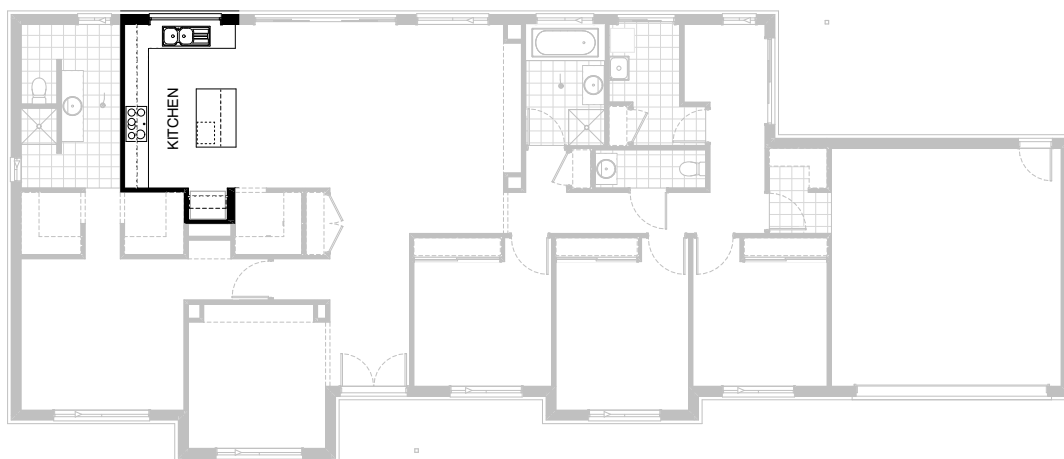
Option Kitchen03

Provide Butler's Pantry in lieu of Walk-in Pantry including:
2No. 700mm base cupboards,
1No. 300mm base cupboard,
2No. 700mm overhead cupboards,
1No. 300mm overhead cupboard,
single bowl sink,
additional benchtop and tiled splashback to suit.
Option also removes Coats closet.



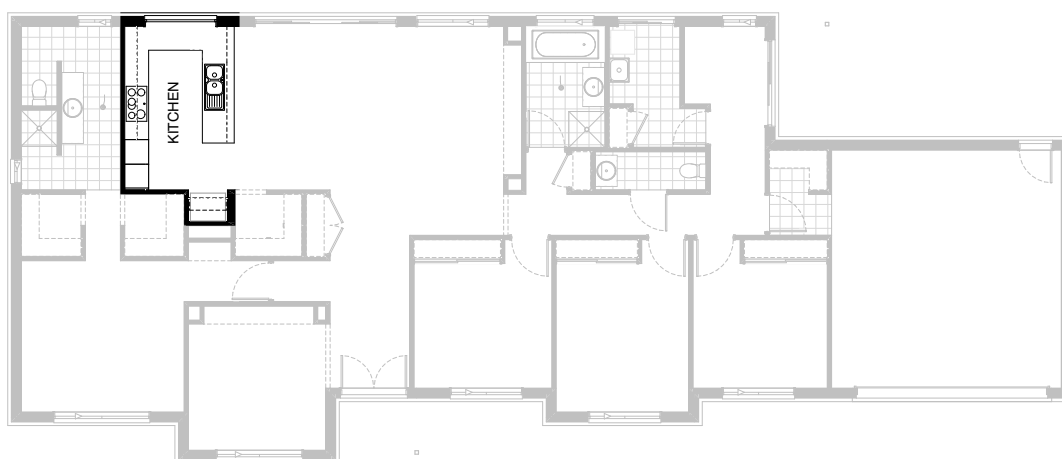
Option Kitchen04

Provide Butler's Pantry in lieu of Walk-in Pantry including:
 Relocated Ref space with 900mm open shelf over,
 2No. 700mm base cupboards,
 1800mm high 450mm deep open shelving unit,
 single bowl sink,
 additional benchtop and tiled splashback to suit.
 Option removes WIR 1b and provides built-in Robe with sliding
 doors to accommodate.
 Option also reduces Coats closet with 2No. 520mm hinged doors in
 lieu of standard and provides 510mm wide Alcove with 4No. 60mm
 thick 300mm deep open shelves facing Meals.



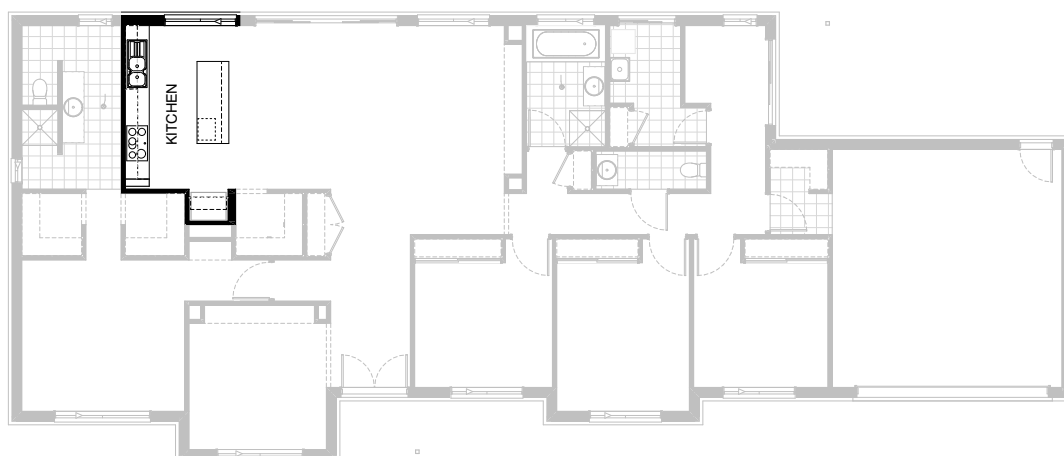
Option Kitchen05

Provide Kitchen upgrade option providing L-shaped benchtop and relocated sink including:
 900mm retractable rangehood,
 900mm cooktop,
 dishwasher provision,
 microwave provision with pot drawer under,
 450mm drawer unit,
 1No. 900mm base cupboard,
 1No. 900mm base corner cupboard with bi-fold door,
 2No. 800mm base cupboards,
 1No. 350mm base cupboard,
 3No. 300mm base cupboards,
 2No. 800mm overhead cupboards,
 1No. 800mm open shelf unit,
 1No. 350mm overhead cupboard,
 1No. 300mm overhead cupboard,
 920mm open shelf over refrigerator space,
 additional benchtop and tiled splashback to suit.
 Provide AFW1218 fixed window with no bottom reveal in lieu of ASW2018 sliding window.



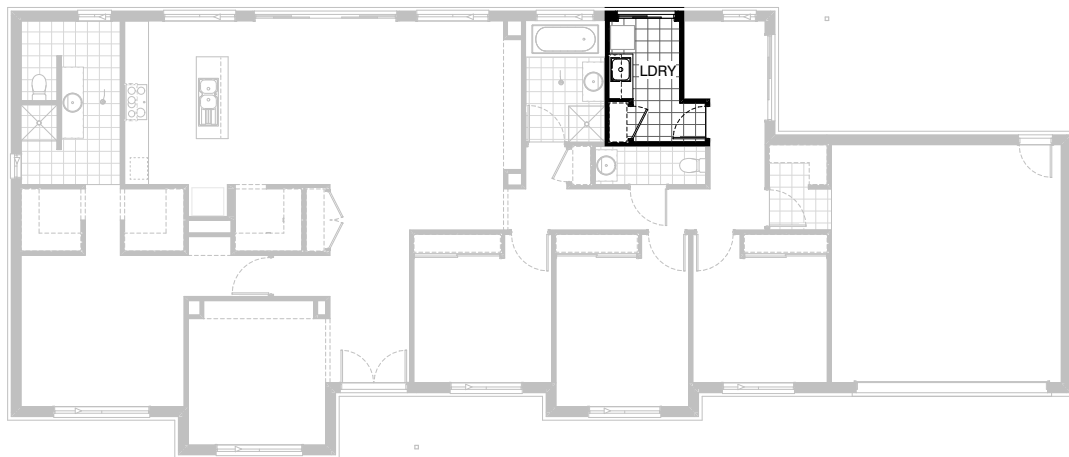
Option Kitchen06

Provide Kitchen upgrade option providing U-shaped benchtop in lieu of Island including:
 900mm retractable rangehood,
 900mm cooktop,
 dishwasher provision,
 450mm drawer unit,
 2No. 900mm base cupboards,
 1No. 900mm blind corner base cupboard with 450mm door,
 1No. 900mm corner base cupboard with bi-fold door,
 1No. 700mm base cupboard,
 2No. 450mm base cupboard,
 1No. 350mm base cupboard,
 1No. 900mm overhead cupboard,
 2No. 450mm overhead cupboards,
 2No. 600mm laminate oven towers with open shelves,
 900mm open shelf over refrigerator space,
 additional benchtop and tiled splashback to suit.
 Provide AFW1218 fixed window with no bottom reveal in lieu of ASW2018 sliding window.



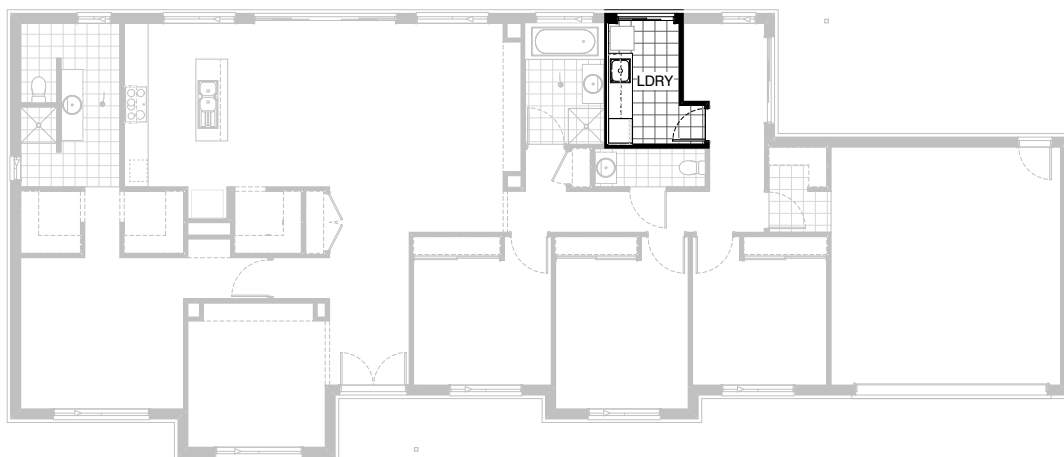
Option Kitchen07

Provide Kitchen upgrade option relocating sink to cooker benchtop in lieu of Island including:
 900mm retractable rangehood,
 900mm cooktop,
 dishwasher provision,
 microwave provision with pot drawer under,
 450mm drawer unit,
 3No. 900mm base cupboards,
 1No. 450mm base cupboard,
 1No. 900mm overhead cupboard,
 1No. 450mm overhead cupboard,
 2No. 60mm thick 300mm deep open shelves,
 1No. 180mm wide full height wine rack,
 900mm open shelf over refrigerator space.



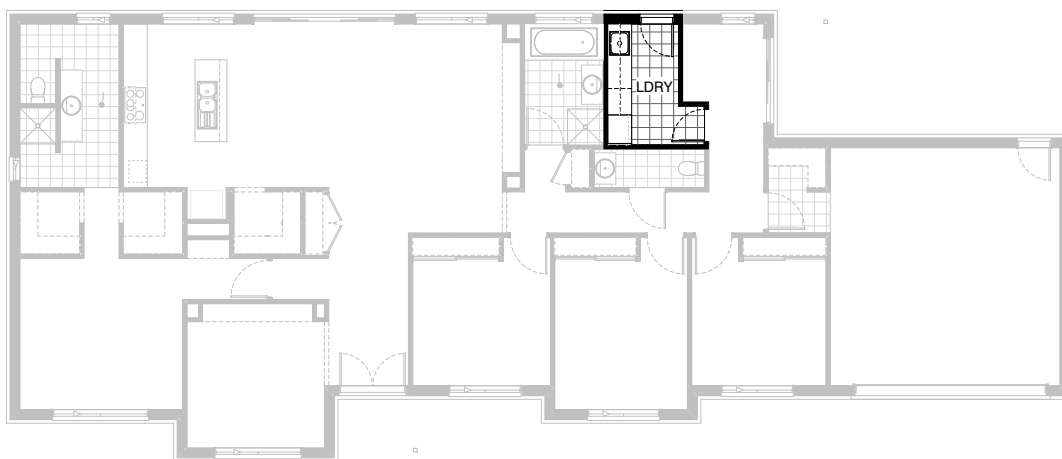
Option Laundry01

Provide Laundry upgrade including laminate base cupboards and stainless steel inset trough including:
1No. 700mm base cupboard,
1No. 350mm base cupboard,
1No. 700mm overhead cupboard,
1No. 350mm overhead cupboard,
additional benchtop and tiled splashback to suit.



Option Laundry02

Provide Laundry upgrade including laminate base cupboards and stainless steel inset trough including:
2No. 800mm base cupboards,
2No. 800mm overhead cupboards,
1No. 600mm full height laminate cupboard,
additional benchtop and tiled splashback to suit.

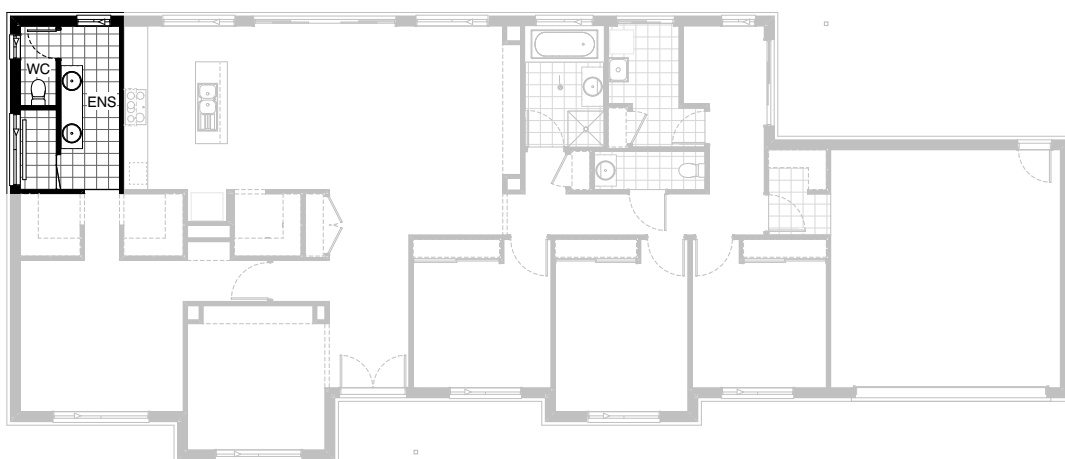


Option Laundry03

Provide Laundry upgrade including laminate base and overhead cupboards and stainless steel inset trough including

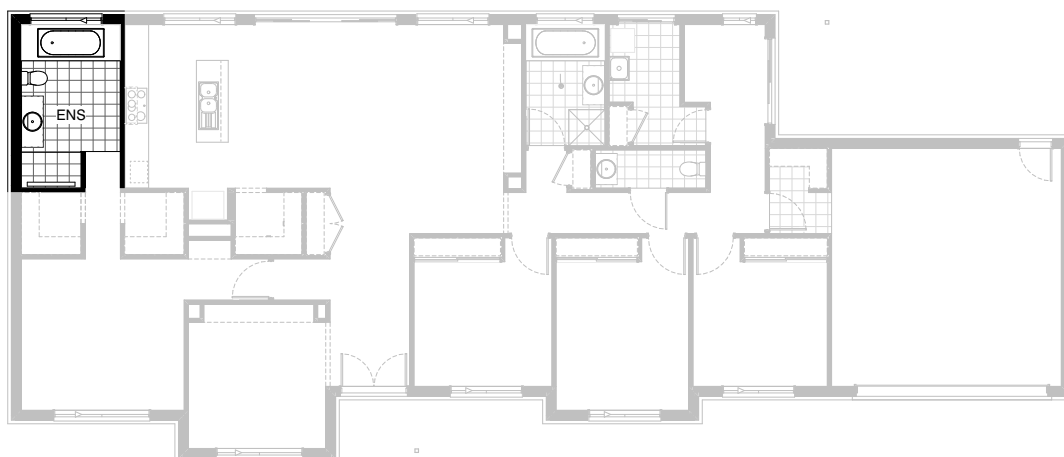
- 1No. 900mm base cupboard,
- 2No. 900mm overhead cupboards,
- 1No. 450mm overhead cupboard,
- 1No. 700mm full height laminate Linen cupboard,

additional benchtop and tiled splashback to suit. Option raises bench height to 950mm and provides open space under bench for washer and dryer side-by-side.
 Replace ASD2115 sliding door with AED2108 hinged door.



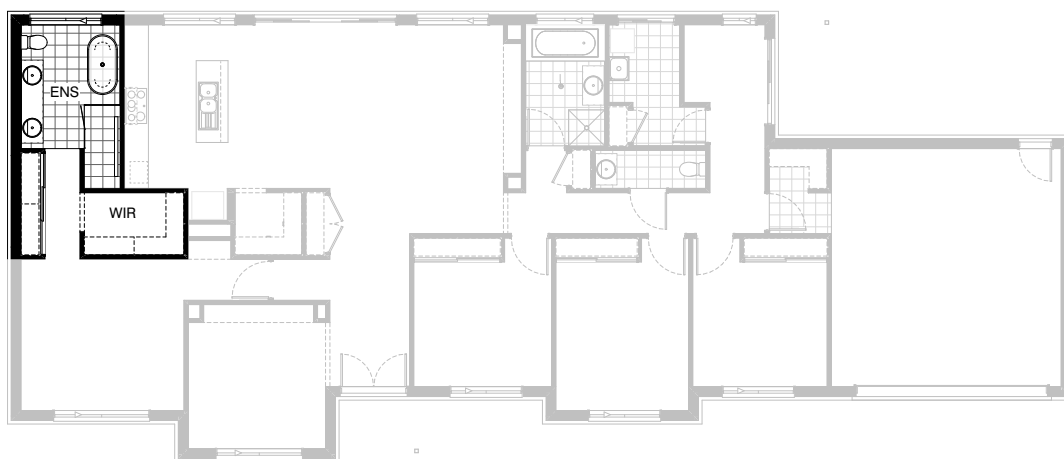
Option Ensuite01

Provide Ensuite upgrade option to Bedroom 1 including enclosed WC with 720mm hinged door, 2000x900mm wall-to-wall tiled shower base with grate drain, 2082mm vanity with double basins.
Provide ASW0318 sliding window to shower in lieu of standard and additional ASW1206 sliding window to WC.



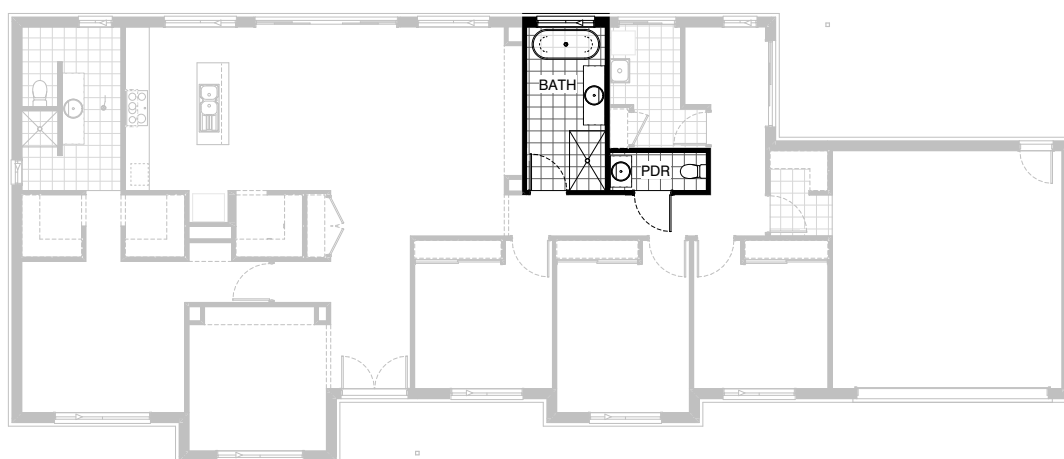
Option Ensuite02

Provide Ensuite upgrade option to Bedroom 1 including rearranged layout with 1500x900mm wall-to-wall tiled shower base with grate drain, 1282mm vanity, 1675mm bath with tiled hob and relocated W.C.
 Provide ASW1218 sliding window in lieu of standard.



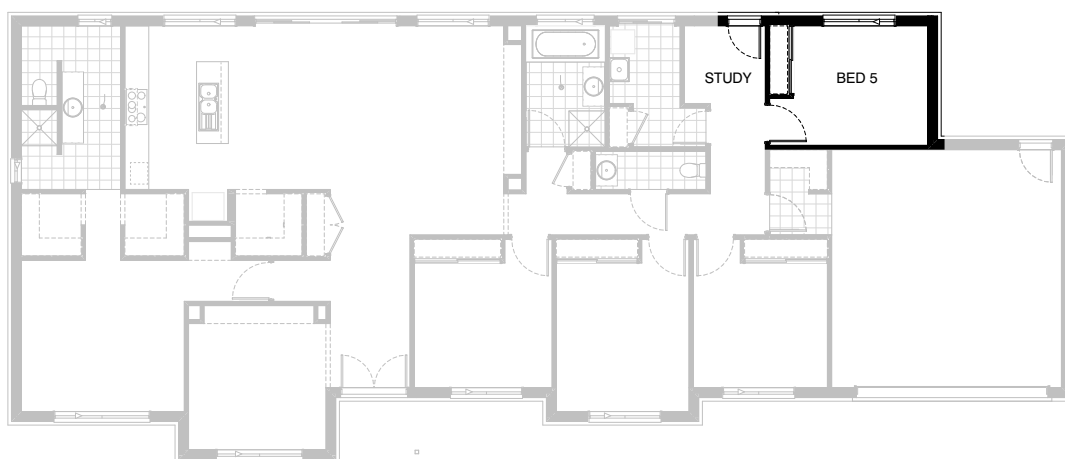
Option Ensuite03

Provide Ensuite upgrade option to Bedroom 1 including rearranged layout with 2100x900mm tiled shower base with grate drain, 2082mm vanity with double basins, freestanding bath and relocated WC.
 Provide ASW1218 sliding window in lieu of standard.
 Option also provides built-in Robe with 3No. sliding doors and larger WIR in lieu of standard.



Option Internal01

Provide Bathroom upgrade option including
1500x900mm tiled shower base with grate drain,
1482mm vanity and freestanding bath in lieu of standard.
Option also removes Linen closet and reduces length of
Powder by 350mm to accommodate.

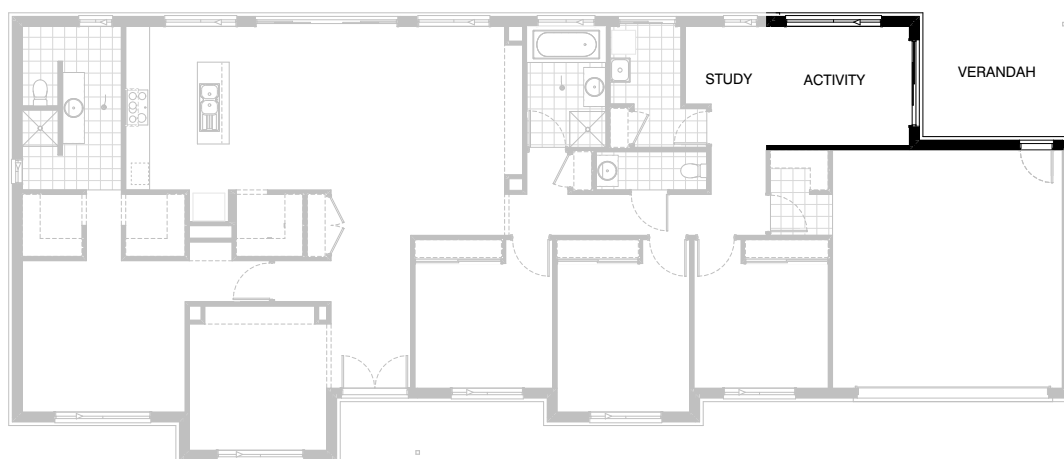


Option Internal02

Provide 5th Bedroom option in lieu of Verandah including 920mm hinged door and built-in Robe with 450mm shelf and hanging rail and ASW1218 sliding window.

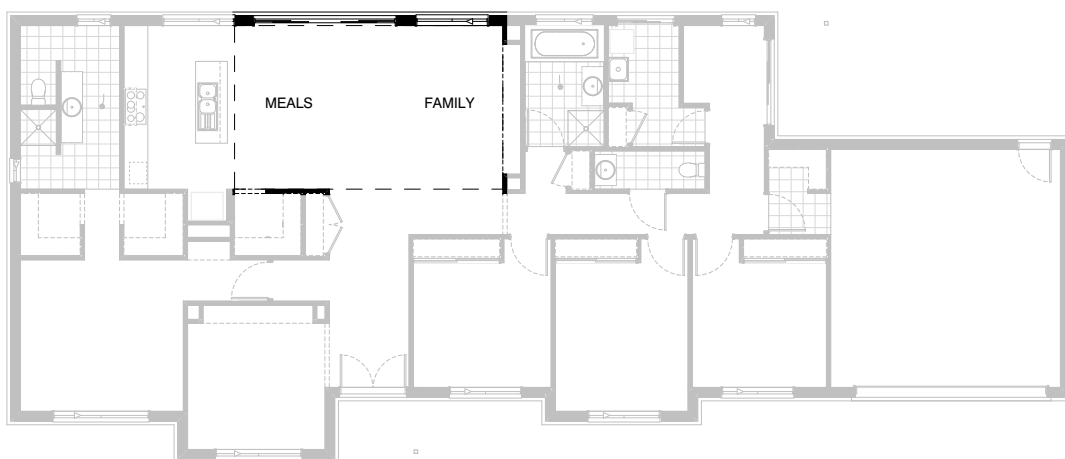
Option also provides AED2108 hinged door to Study in lieu of ASW1809 sliding window and removes ASD2121 sliding door. Adds 12.70m² to House floor area.

Removes 4.70m² to Verandah floor area.



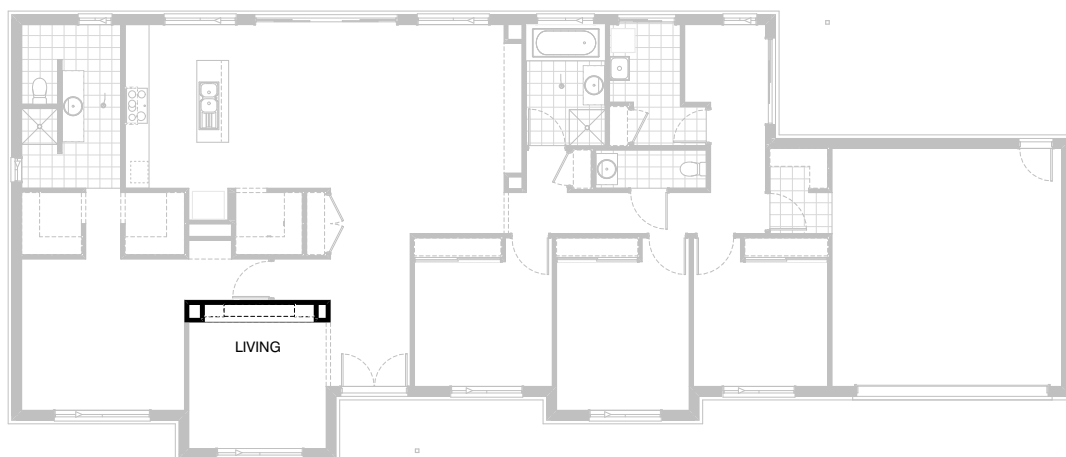
Option Internal03

Provide Activity and larger Verandah to the rear of the home option including ASW0524 sliding window. Adds 11.20m² to House floor area. Adds 7.27m² to Verandah floor area.



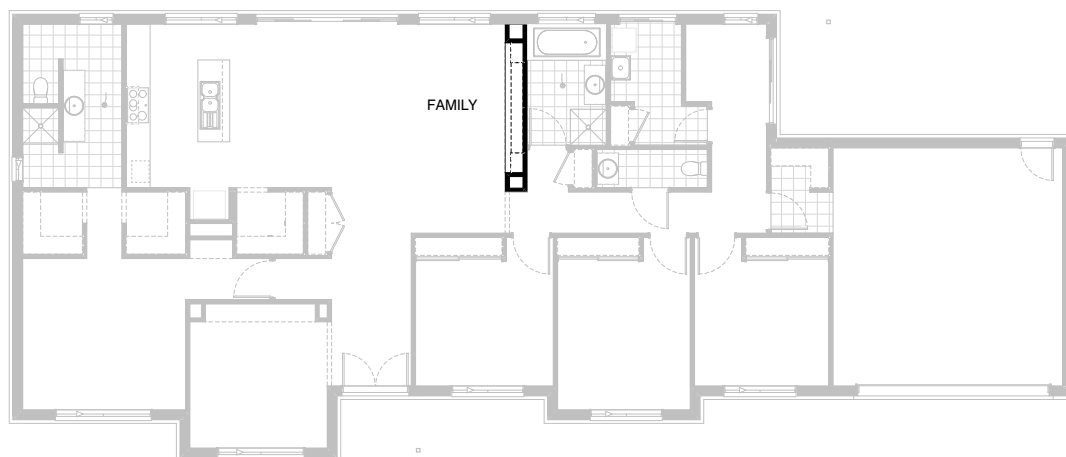
Option Internal04

Provide raked ceiling to Meals and Family option



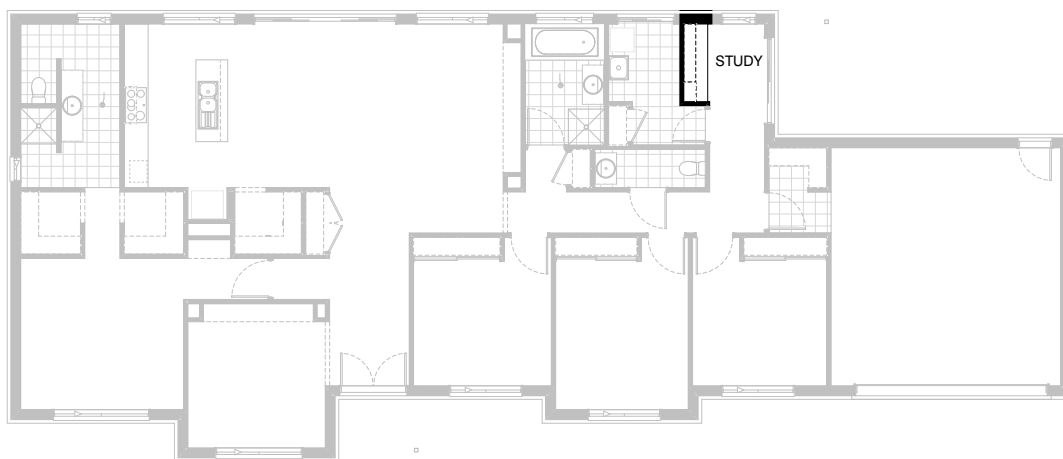
Option Internal05

Provide built-in joinery to Living room, including:
450mm deep 32mm thick laminate benchtop,
3No. 900mm tv unit base cupboards,
2No. 450mm overhead open shelf units,
2No. 60mm thick 300mm deep open shelves.



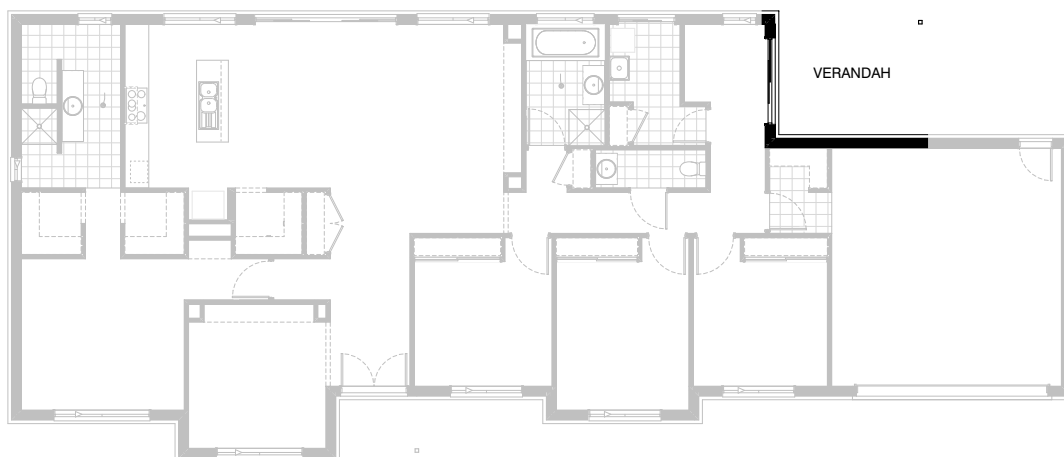
Option Internal06

Provide built-in joinery to Family room, including:
450mm deep 32mm thick laminate benchtop,
4No. 800mm tv unit base cupboards,
2No. 450mm overhead open shelf units,
2No. 60mm thick 300mm deep open shelves



Option Internal07

Provide built-in joinery to Study, including:
600mm deep 32mm thick laminate desk,
1No. 450mm drawer unit below desk,
1No. 450mm overhead open shelf unit,
2No. 60mm thick 300mm deep open shelves.

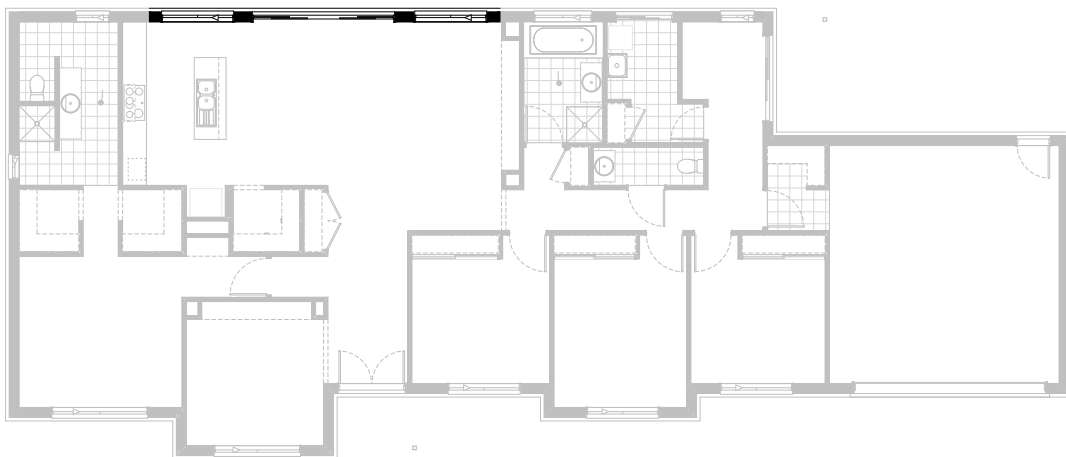


Option External01

Provide larger Verandah to the rear of the home option.
Adds 7.27m² to Verandah floor area.

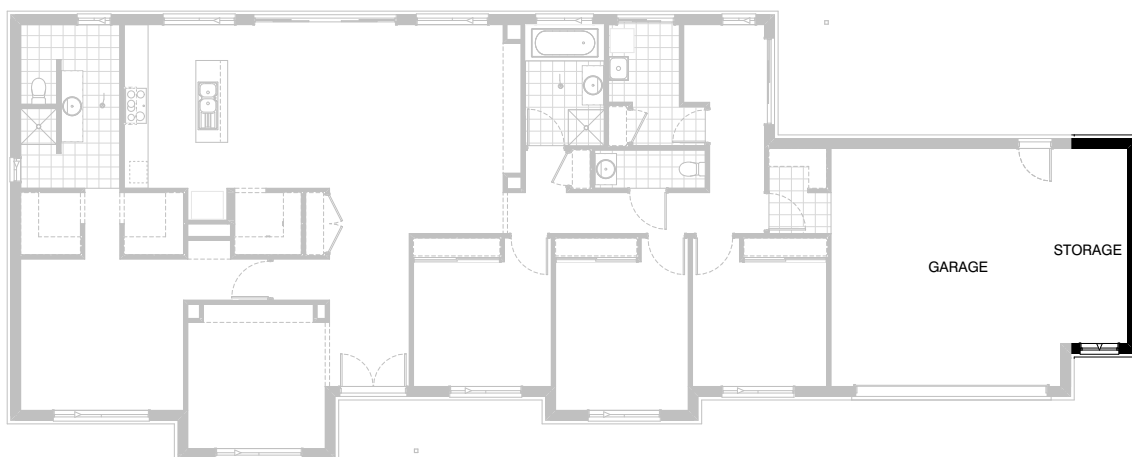


GRAND ALFRESCO



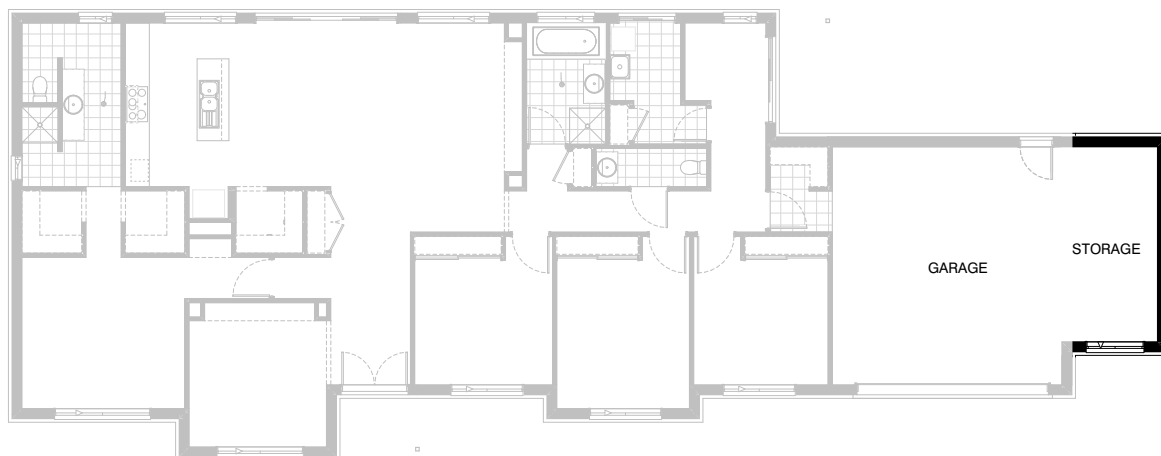
Option External02

Provide Grand Alfresco option including:
1No. additional timber post and additional tiled
roof over.
Adds 16.10m² to Alfresco floor area.



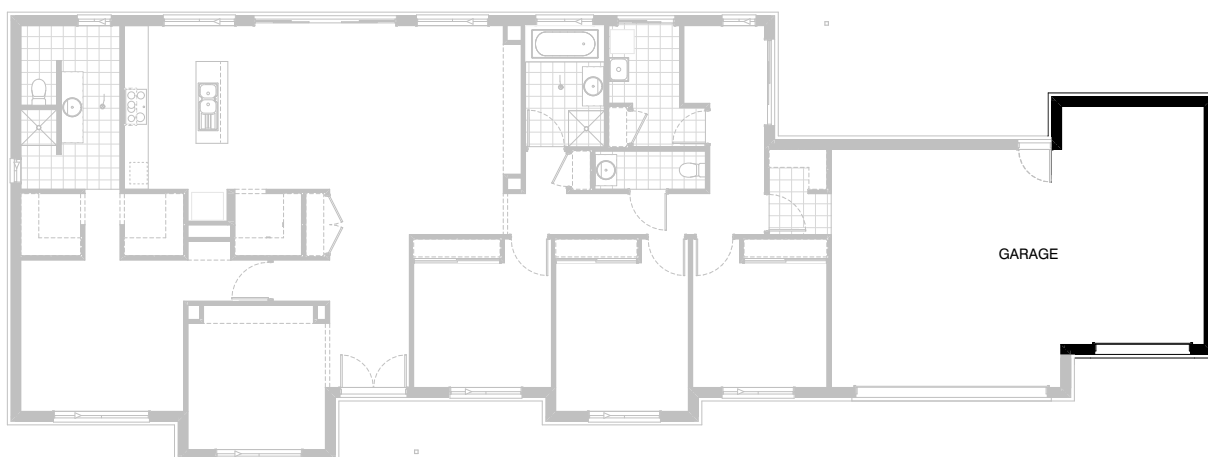
Option Garage01

Provide extension to Garage to create additional Storage area including additional AAWF2009 awning window.
 Increases width of the home by 1680mm.
 Increases area of the home by 9.06m²



Option Garage02

Provide extension to Garage to create additional Storage area including additional AAWF2015 awning window.
Increases width of the home by 2400mm.
Increases area of the home by 12.94m²



Option Garage03

Provide extension to Garage to create Triple Car
 Garage including additional 2100x2410 garage
 door as per colour selection.
 Increases width of the home by 3600mm.
 Increases area of the home by 23.81m²