



FLOORPLAN OPTIONS

We personalise our floorplans. Talk to us about our huge range of ready-to-go design options.

Listed details based on Traditional facade floorplan (illustrated)

Facades available:

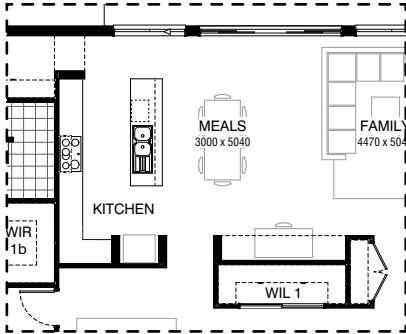
Coastal, Delta, Kingston, Nouveau
Salisbury, Traditional, York

Overall home width 31,520mm

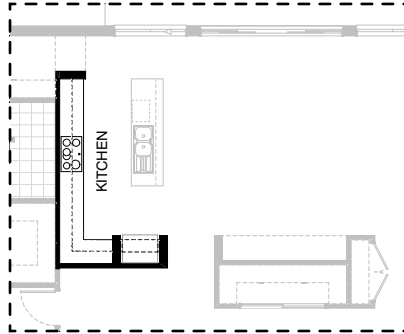
Overall home length 15,610mm

Residence	287.1m ²	30.9sq
Garage	38.5m ²	4.1sq
Porch	3.7m ²	0.4sq
Alfresco	29.2m ²	3.1sq
Total	374.6m²	40.2sq

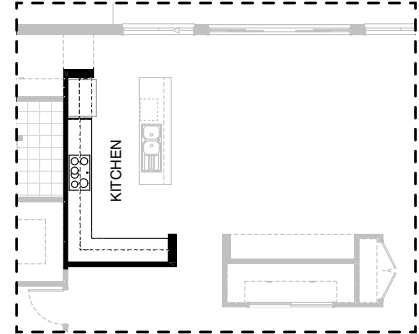
*Copyright conditions. All photos and illustrations are representative only. Floor plans and specifications may be varied by Burbank without notice, the dimensions are diagrammatic only and a Building Contract with final drawings will display correct dimensions and detail. All designs are the property of Burbank and must not be used, reproduced, copied or varied, wholly or in part without written permission from an authorised Burbank representative. Copyright Burbank Australia (QLD) Pty Ltd. ABN 77 103 014 615. QBCC 1046544.



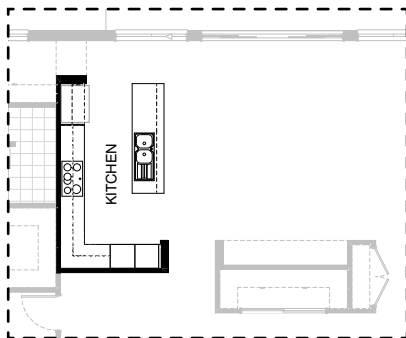
Master Kitchen



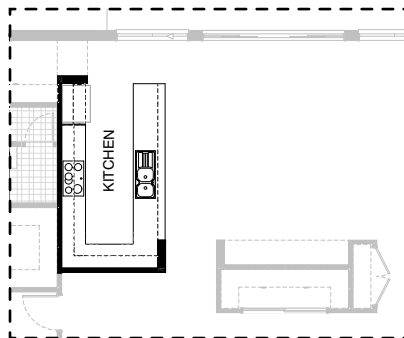
K01



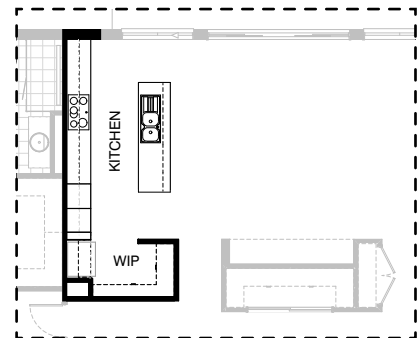
K02



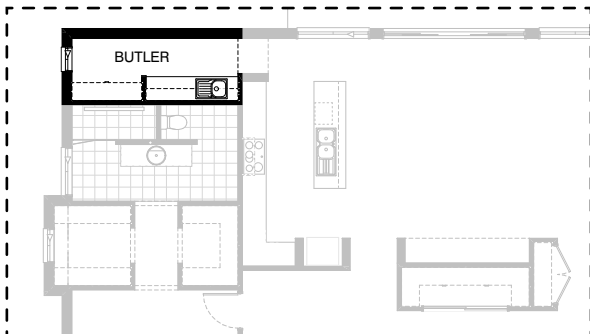
K03



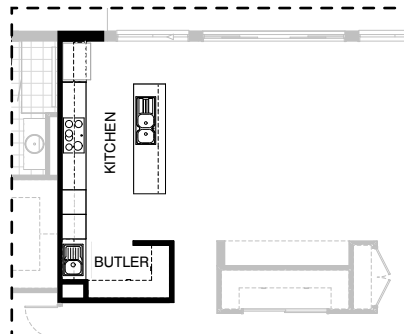
K04



K06

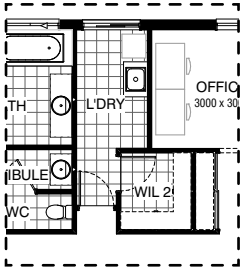


K05

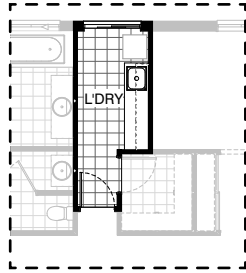


K07

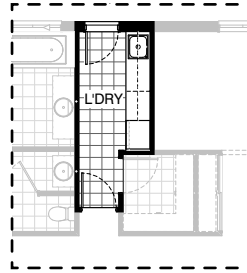
*Copyright conditions. All photos and illustrations are representative only. Floor plans and specifications may be varied by Burbank without notice, the dimensions are diagrammatic only and a Building Contract with final drawings will display correct dimensions and detail. All designs are the property of Burbank and must not be used, reproduced, copied or varied, wholly or in part without written permission from an authorised Burbank representative. Copyright Burbank Australia (QLD) Pty Ltd. ABN 77 103 014 615. QBCC 1046544.



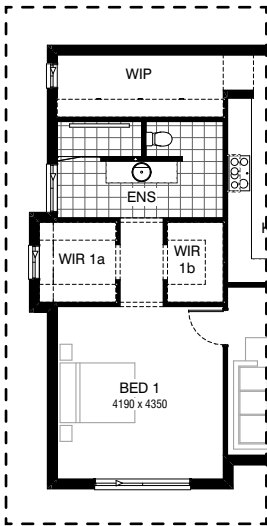
Master Laundry



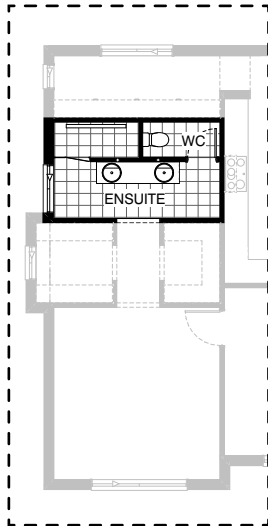
LD01



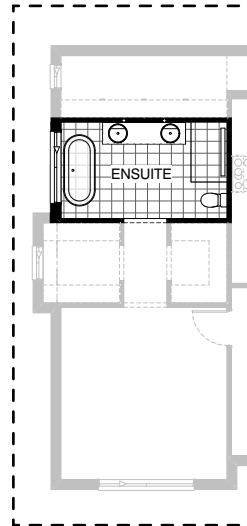
LD02



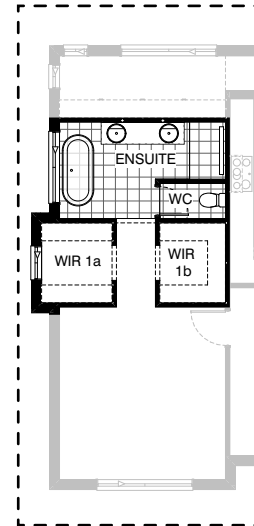
Master Ensuite



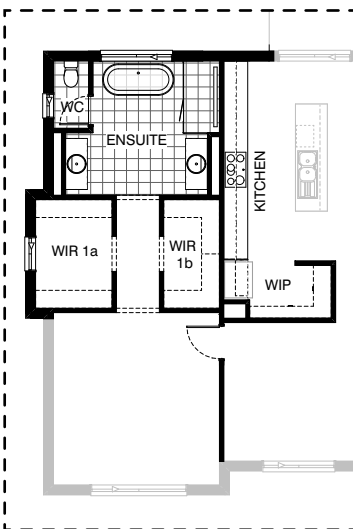
EN01



EN02

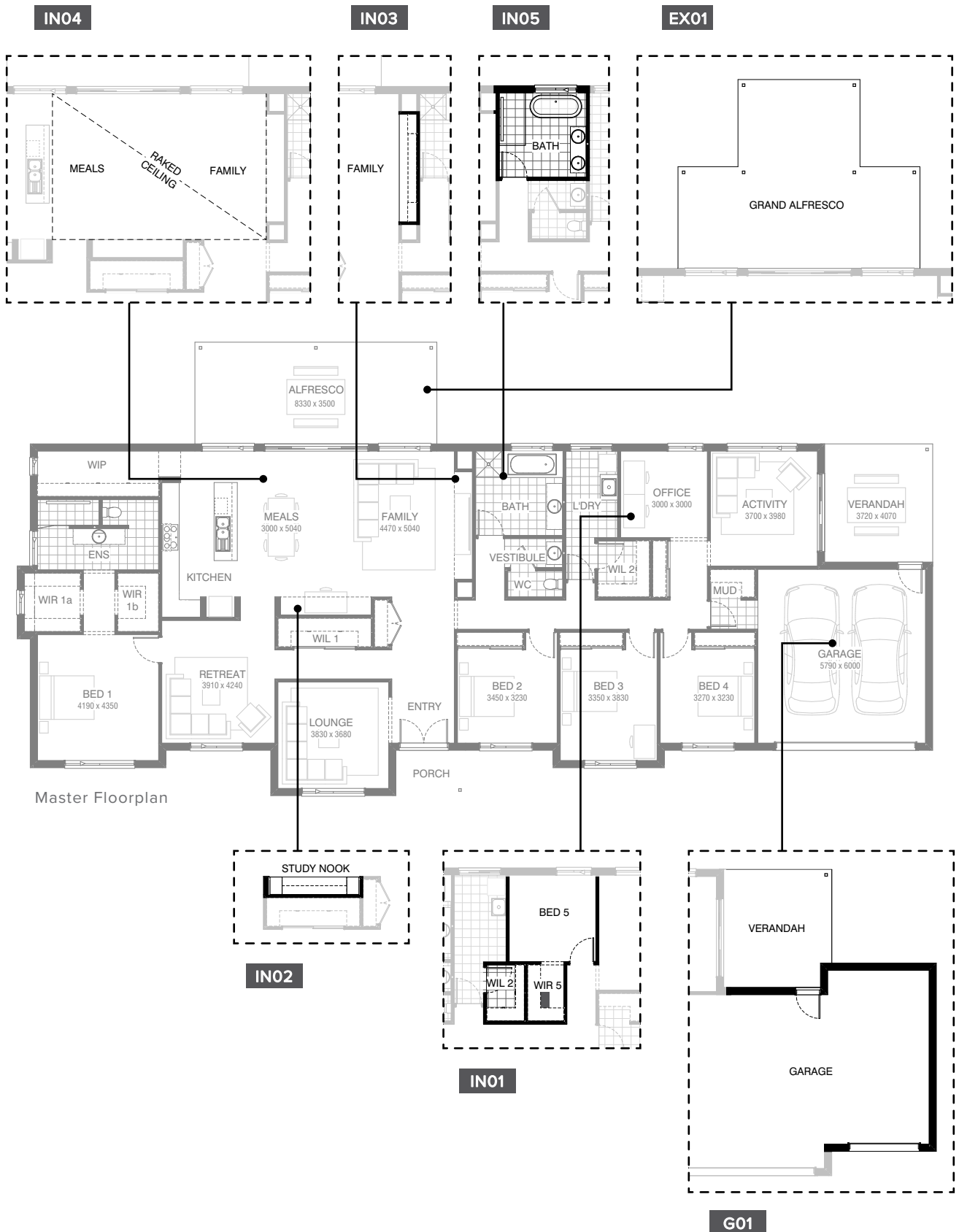


EN03



EN04

*Copyright conditions. All photos and illustrations are representative only. Floor plans and specifications may be varied by Burbank without notice, the dimensions are diagrammatic only and a Building Contract with final drawings will display correct dimensions and detail. All designs are the property of Burbank and must not be used, reproduced, copied or varied, wholly or in part without written permission from an authorised Burbank representative. Copyright Burbank Australia (QLD) Pty Ltd. ABN 77 103 014 615. QBCC 1046544.



*Copyright conditions. All photos and illustrations are representative only. Floor plans and specifications may be varied by Burbank without notice, the dimensions are diagrammatic only and a Building Contract with final drawings will display correct dimensions and detail. All designs are the property of Burbank and must not be used, reproduced, copied or varied, wholly or in part without written permission from an authorised Burbank representative. Copyright Burbank Australia (QLD) Pty Ltd. ABN 77 103 014 615. QBCC 1046544.

OPTION DESCRIPTIONS**K01 - Kitchen Option 01**

Provide Kitchen upgrade option, including:
1No. 900mm open shelf over Ref space,
5No. 700mm overhead cupboards,
1No. 300mm overhead cupboard,
1No. 600mm overhead corner cupboard with bi-fold doors.

K02 - Kitchen Option 02

Provide L-shaped Kitchen upgrade option, including:
900mm retractable rangehood,
900mm under bench oven,
900mm cooktop,
1No. 994mm open shelf over relocated Ref space,
2No. 900mm base cupboards,
1No. 900mm base corner cupboard with bi-fold doors,
2No. 800mm base cupboards,
2No. 900mm overhead cupboards,
2No. 800mm overhead cupboards,
1No. 600mm overhead corner cupboard with bi-fold doors,
2No. 300mm overhead cupboards.
Island bench to remain unchanged.
180mm nib wall moves 20mm to accommodate.

K03 - Kitchen Option 03

Provide Kitchen upgrade option, including:
900mm retractable rangehood,
900mm cooktop, dishwasher provision,
1No. 994mm open shelf over relocated Ref space,
1No. 450mm drawer unit,
4No. 900mm base cupboards,
1No. 900mm base corner cupboard with bi-fold doors,
1No. 700mm base cupboard,
1No. 350mm base cupboard,
2No. 600mm laminate oven towers with microwave provisions,
2No. 900mm overhead cupboards,
1No. 600mm open shelf overhead cupboard,
1No. 600mm overhead corner cupboard with bi-fold doors,
1No. 300mm overhead cupboards.

K04 - Kitchen Option 04

Provide U-shaped Kitchen upgrade option, including:
additional benchtop and tiled splashback,
900mm retractable rangehood,
900mm under bench oven,
900mm cooktop,
1No. 994mm open shelf over relocated Ref space, dishwasher provision,
1No. 450mm drawer unit,
4No. 900mm base cupboards,
2No. 900mm base corner cupboards with bi-fold doors,
1No. 800mm base cupboard,
1No. 600mm base cupboard,
2No. 900mm overhead cupboards,
2No. 700mm open shelf overhead cupboards,
1No. 600mm overhead corner cupboard with bi-fold doors,
1No. 350mm overhead cupboard,
1No. 300mm overhead cupboard.
180mm nib wall moves 94mm to accommodate.

K05 - Kitchen Option 05

Provide Kitchen upgrade option with Butler's Pantry in lieu of WIP, including:
600mm deep 32mm thick laminate benchtop,
single bowl sink,
2No. 900mm base cupboards,
1No. 450mm base cupboard,
2No. 300mm deep 60mm thick open shelves,
1No. run of 450mm shelving.
Provide 620mm deep plaster-lined nib wall as shown.

K06 - Kitchen Option 06

Provide Kitchen upgrade option, including:
additional benchtop and tiled splashback,
900mm retractable rangehood,
900mm cooktop,
1No. 928mm open shelf over relocated Ref space,
dishwasher provision,
1No. 450mm drawer unit,
4No. 900mm base cupboards,
1No. 700mm base cupboard,
2No. 450mm base cupboards,
2No. 600mm laminate oven towers with microwave provisions
2No. 900mm overhead cupboards,
2No. 450mm overhead cupboards,
1No. 180mm full height laminate wine rack.
1No. run of 450mm shelving to WIP,
1No. run of 300mm shelving to WIP.
Note:
option only available with option Ensuite04

K07 - Kitchen Option 07

Provide Kitchen upgrade option with Butler's Pantry in lieu of WIP, including:
additional benchtop and tiled splashback,
900mm retractable rangehood,
900mm cooktop,
1No. 992mm open shelf over relocated Ref space, dishwasher provision,
1No. 450mm drawer unit,
3No. 900mm base cupboards,
2No. 700mm base cupboard,
1No. 300mm base cupboard,
2No. 600mm laminate oven towers with microwave provisions,
2No. 900mm overhead cupboards,
2No. 300mm deep 60mm thick open shelves,
additional single bowl sink,
2No. runs of 450mm shelving to Butler's Pantry.
Note:
option only available with option Ensuite04

LD01 - Laundry Option 01

Provide Laundry upgrade option with laminate base and overhead cupboards and stainless steel inset trough, including:
3No. 700mm base cupboard, 3No. 700mm overhead cupboard, additional benchtop and tiled splashback to suit.

LD02 - Laundry Option 02

Provide Laundry upgrade option with laminate base and overhead cupboards and stainless steel inset trough, including:
1No. 700mm base cupboard,
2No. 700mm overhead cupboards,
1No. 800mm overhead cupboard,
1No. 700mm full height laminate Linen cupboard,
additional benchtop and tiled splashback to suit. Provide 2105mm x 850mm Aluminium Entry door in lieu of standard 2110mm x 1450mm Aluminium sliding door. Option also provides open space under bench for washer and dryer side-by-side and raises the bench height to 950mm (kicker height raises).

ENS01 - Ensuite Option 01

Provide Ensuite upgrade option with rearranged layout, including:
2082mm vanity with double basins, 2120mm x 900mm tiled shower base with grate drain, enclosed WC with 720mm hinged door.

ENS02 - Ensuite Option 02

Provide Ensuite upgrade option with rearranged layout, including:
1780mm freestanding bath, 2082mm vanity with double basins, 1500mm x 900mm tiled shower base with grate drain, relocated toilet pan. Provide 1200mm x 1810mm Aluminium sliding window in lieu of standard.

OPTION DESCRIPTIONS**ENS03 - Ensuite Option 03**

Provide Ensuite upgrade option with rearranged layout, including: 1780mm freestanding bath, 2082mm vanity with double basins, 1430mm x 900mm wall-to-wall tiled shower base with grate drain, enclosed WC with 720mm hinged door. Adjust passage to Ensuite between WIR 1a and WIR 1b as shown. Provide 1200mm x 1810mm Aluminium sliding window in lieu of standard.

ENS04 - Ensuite Option 04

Provide Grand Ensuite upgrade option that also moves location of Walk-in Pantry and increases size of Walk-in Robes.

Ensuite includes:

2No. 1282mm vanities with single basins, 1800mm x 900mm tiled shower base with grate drain, 1780mm freestanding bath, enclosed WC with 720mm hinged door, 1027mm x 610mm Aluminium sliding window in lieu of 1800mm x 610mm Aluminium sliding window. Provide 1200mm x 1810mm Aluminium sliding window to Ensuite. Option also changes Kitchen layout to accommodate, moves Ref space and provides relocated Walk-in Pantry.

New Kitchen includes:

900mm open shelf over relocated Ref space,
900mm retractable rangehood,
900mm under bench oven,
900mm cooktop,
4No. 900mm base cupboards,
1No. 450mm base cupboard,
4No. 900mm overhead cupboards,
1No. 450mm overhead open shel,
1No. run of 450mm shelving to WIP,
1No. run of 300mm shelving to WIP.
Island bench to remain unchanged.

IN01 - Internal Option 01

Provide 5th Bedroom option in lieu of standard Home Office, including: 870mm hinged door in lieu of bulkhead opening, removes Linen closet, provide Walk-in Robe with 2No. runs of 450mm shelving. Option also reduces size of Walk-in Linen to Laundry with 1No. run of 450mm shelving and 1No. run of 300mm shelving.

IN02 - Internal Option 02

Provide built-in joinery option to Study Nook, including: 600mm deep 32mm thick laminate benchtop, 2No. 400mm full height laminate cupboards, 2No. 300mm deep 60mm thick open shelves over.

IN03 - Internal Option 03

Provide built-in joinery option to Family room, including: 600mm deep 32mm thick laminate benchtop, 4No. 900mm tv unit cupboards, 2No. 600mm open shelf overhead cupboards, 2No. 300mm deep 60mm thick open shelves over.

IN04 - Internal Option 04

Provide raked ceiling option to Meals and Family area with square set cornice and standard ceiling height over Kitchen.

IN05 - Internal Option 05

Provide Bathroom upgrade option, including: 1780mm freestanding bath, 1800mm x 900mm tiled shower base with grate drain, 1582mm vanity with double basins.

EX01 - External Option 01

Provide Grand Alfresco option by increasing the Alfresco size by 3000mm x 4200mm as shown.

Option includes increased tiled roof over, structural concrete slab, 3No. additional painted timber posts.

Option adds 12.60m² to total floor area.

G01 - Garage Option 01

Provide triple car Garage including additional Garage door as per colour selection.

Increases area by 23.33m².

Increases width by 3600mm.