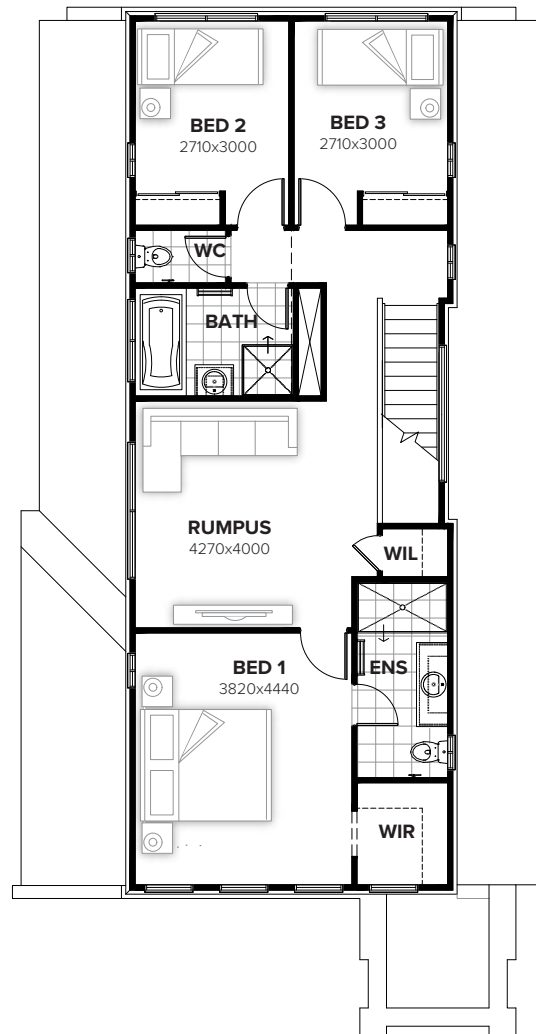


GROUND FLOOR



FIRST FLOOR



**FLOORPLAN OPTIONS**

We personalise our floorplans. Talk to us about our huge range of ready-to-go design options or simply visit [www.burbank.com.au/south-australia](http://www.burbank.com.au/south-australia) for more details.

**Facades available:**

Cambridge, Coventry, Halifax, Yorke  
Northampton, Oxford, Westminster

**Overall home width 8.87m**  
**Overall home length 18.11m**

Residence	181.8m <sup>2</sup>	19.6sq
Garage	38.7m <sup>2</sup>	4.2sq
Porch	3.6m <sup>2</sup>	0.4sq
<b>Total</b>	<b>224.1m<sup>2</sup></b>	<b>24.1sq</b>

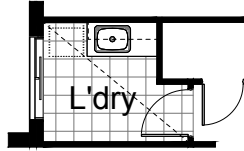
Listed details based on Coventry facade floorplan (illustrated)

\*Copyright conditions. All photos and illustrations are representative only. Floor plans and specifications may be varied by Burbank without notice, the dimensions are diagrammatic only and a Building Contract with final drawings will display correct dimensions and detail. All designs are the property of Burbank and must not be used, reproduced, copied or varied, wholly or in part without written permission from an authorised Burbank representative. Copyright Burbank Australia (SA) Pty Ltd. ABN 96 165 533 406. BLD 266709.

**Call 13 BURBANK**  
**Visit [burbank.com.au](http://burbank.com.au)**

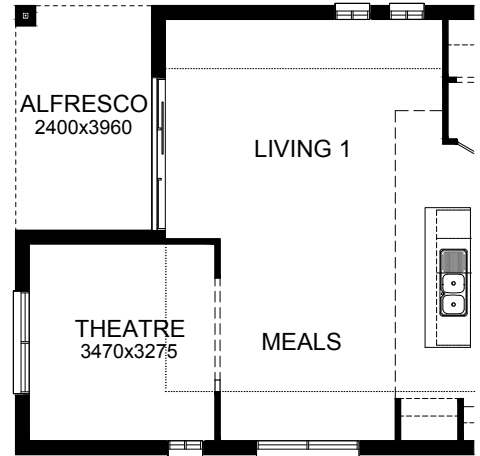
**OPTION LD1**

Provide Laundry upgrade with laminated insert trough, 1no. 800mm & 1no. 350mm base cupboards and 1no. 800mm & 1no. 350mm overhead cupboards with additional tiled splash back and bench top to suit.



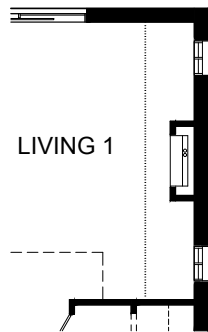
**OPTION IP2**

Provide Alfresco & Theatre with additional 1818 ASW to Theatre. Relocate 1No. 1806 ASW to Theatre from Meals & upgrade 1No. 1806 ASW to Meals to 1No. 1818 ASW. Reduce ASD to 2127 in lieu of 2148. Increases width by 2400mm.



**OPTION IP1**

Provide Real Flame Inspire 900 gas fireplace, 400mm off floor level in a 1400mm x 420mm boxed out plaster wall with a 4 sided black fascia to Rumpus room side wall.



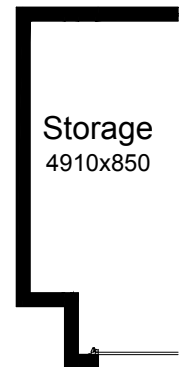
**OPTION EP1**

Provide Alfresco option with 2no. brick piers and earth floor to Alfresco. Increases area by 17.28m<sup>2</sup>. Increases length by 3450mm.



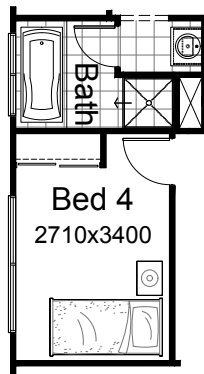
**OPTION G1**

Provide extension to Garage to create additional Storage area. Increases area by 4.58m<sup>2</sup>. Increases width by 850mm.



**OPTION IP3**

Provide Bed 4 in lieu of Living 2. Refigure Bath.



**OPTION G2**

Provide extension to Garage to create Workshop area including additional window to suit. Increases width by 2400mm. Increases area by 13.51m<sup>2</sup>.

