

Facades available:

Callington, Harrogate, Kent	
Lancaster, Sheffield, Swansea	
Wiltshire, Eastwood	
Overall home width	11.27m
Overall home length	23.75m

Residence	167.3m ²	18.0sq
Garage	37.3m ²	4.0sq
Porch	4.9m ²	0.5sq
Alfresco	12.1m ²	1.3sq
Total	221.7m²	23.9sq

Listed details based on Sheffield facade floorplan (illustrated)

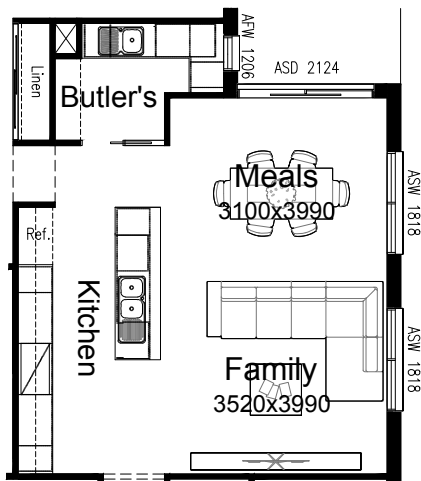
FLOORPLAN OPTIONS

We personalise our floorplans. Talk to us about our huge range of ready-to-go design options or simply visit www.burbank.com.au/south-australia for more details.

*Copyright conditions. All photos and illustrations are representative only. Floor plans and specifications may be varied by Burbank without notice, the dimensions are diagrammatic only and a Building Contract with final drawings will display correct dimensions and detail. All designs are the property of Burbank and must not be used, reproduced, copied or varied, wholly or in part without written permission from an authorised Burbank representative. Copyright Burbank Australia (SA) Pty Ltd. ABN 96 165 533 406. BLD 266709.

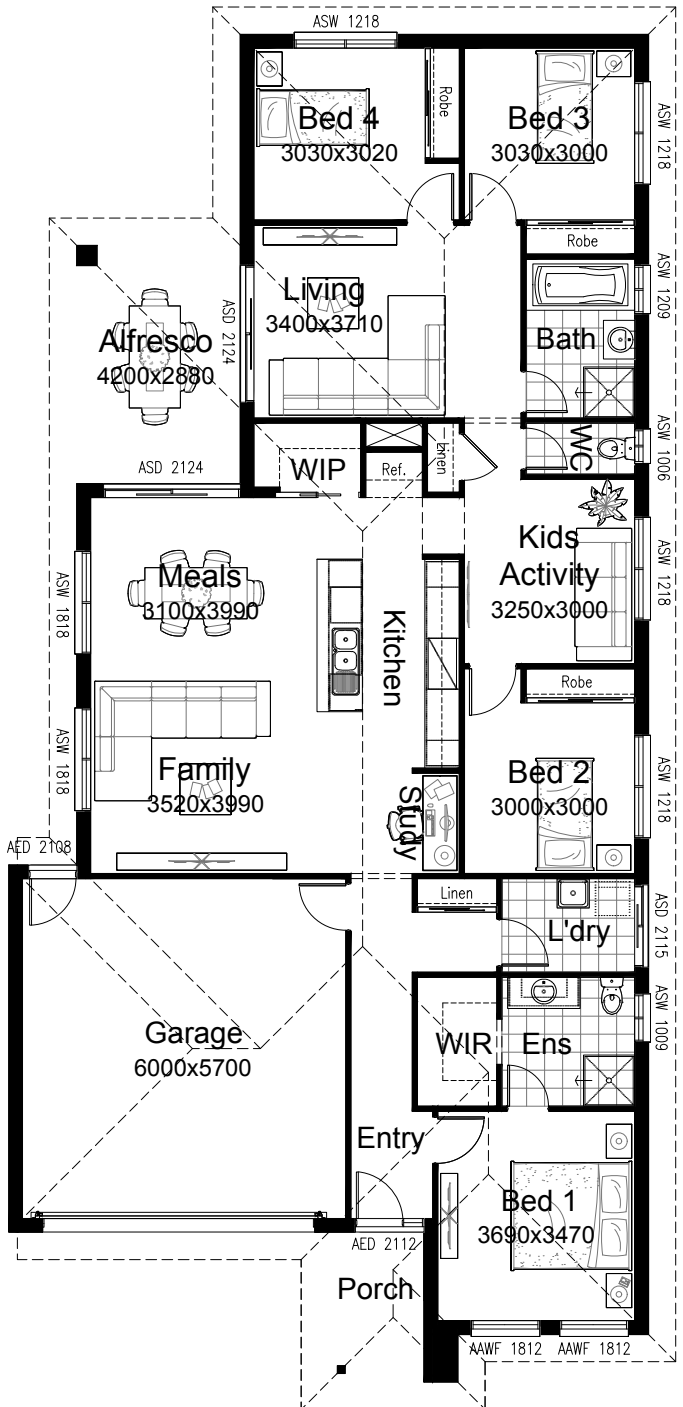
OPTION K1

Provide Butler's Pantry option which moves pantry to other side of kitchen. New kitchen includes 900mm retractable rangehood, 900mm cooktop, 900mm under bench oven, 450mm drawer unit, dishwasher provision, microwave provision with pot drawer, 3No. 900mm base cupboards, 2No. 450mm base cupboards, 2No. 900mm overhead cabinets, 2No. 450mm overhead cabinets, 16mm laminated end panel and open shelf above Ref. space. Butler's Pantry includes additional double power point, additional laminated bench top, 800mm base cupboard, 2No. 450mm base cupboards, 1050mm blind-corner base cupboard with 2No. 300mm doors, single bowl sink, 4No. 450mm shelves, 720mm cavity sliding door, additional AFW1206 fixed window with no bottom reveal and additional tiled splash back to suit.



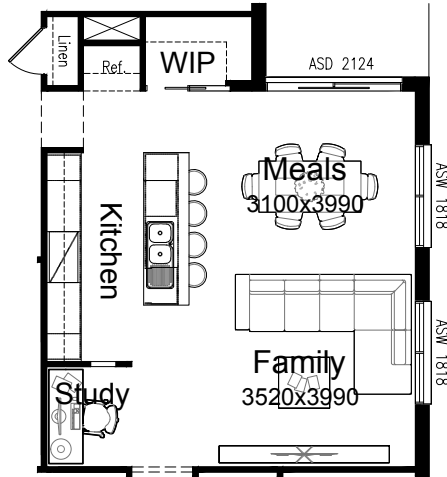
OPTION EP1

Provide mirrored rear section of the home. New kitchen includes 900mm retractable rangehood, 900mm cooktop, 900mm under bench oven, 450mm drawer unit, dishwasher provision, microwave provision with pot drawer, 3No. 900mm base cupboard, 2No. 450mm base cupboards, 2No. 900mm overhead cabinets, 2No. 450mm overhead cabinets. New Walk-in Pantry includes 4No. 450mm shelves and 720mm cavity sliding door.



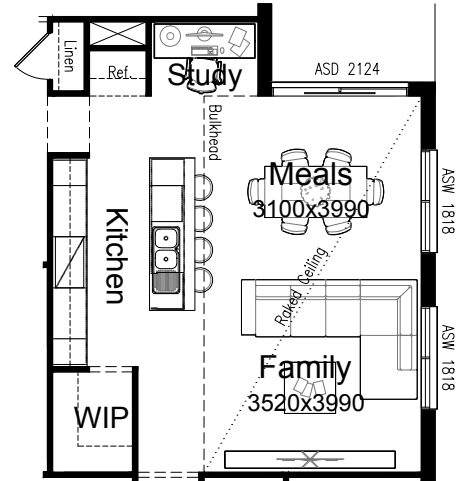
OPTION IP1

Provide option which swaps the location of the Walk-in Pantry and Study as shown. Option adds 720mm cavity sliding door to WIP and 1200mm high x 450mm wide cut-out opening to Study side wall.



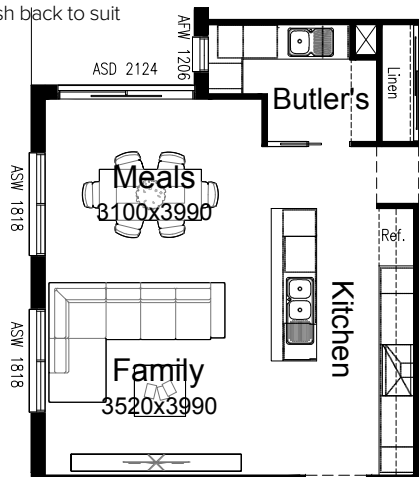
OPTION IP3

Provide raked ceiling option to Meals and Family with bulkhead and standard ceiling height over Kitchen.



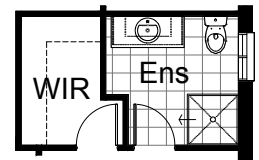
OPTION K2

Provide Butler's Pantry option which moves pantry to other side of kitchen. New kitchen includes 900mm retractable rangehood, 900mm cooktop, 900mm under bench oven, 450mm drawer unit, dishwasher provision, microwave provision with pot drawer, 3No. 900mm base cupboard, 2No. 450mm base cupboards, 2No 900mm overhead cabinets, 2No. 450mm overhead cabinets. Butler's Pantry includes additional double power point, additional laminated bench top, 800mm base cupboard, 2No. 450mm base cupboards, 1050mm blind-corner base cupboard with 2No. 300mm doors, single bowl sink, 4No. 450mm shelves, 720mm cavity sliding door, additional AFW1206 fixed window with no bottom reveal and additional tiled splash back to suit



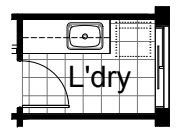
OPTION ENS1

Provide Ensuite option with 720mm hinged door access from Bed 1 directly to Walk-in Robe.



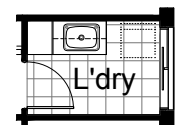
OPTION LD1

Provide Laundry upgrade with laminate base cupboards and stainless steel inset trough including 2No. 700mm base cupboards, 2No. 700mm overhead cupboards, additional benchtop and tiled splashback to suit.



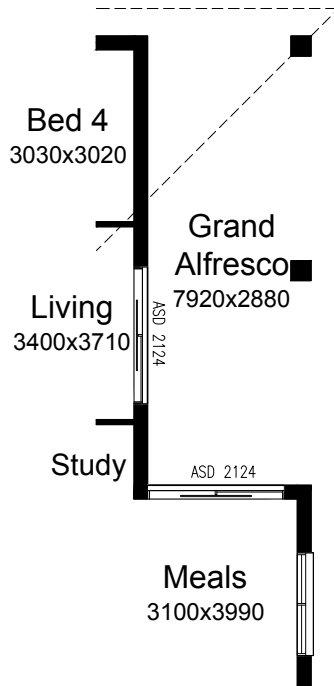
OPTION LD2

Provide Laundry upgrade with 400mm laminated broom cupboard, stainless steel inset trough including 1No. 900mm base cupboard, 1No. 900mm overhead cupboard, additional benchtop and tiled splashback to suit.



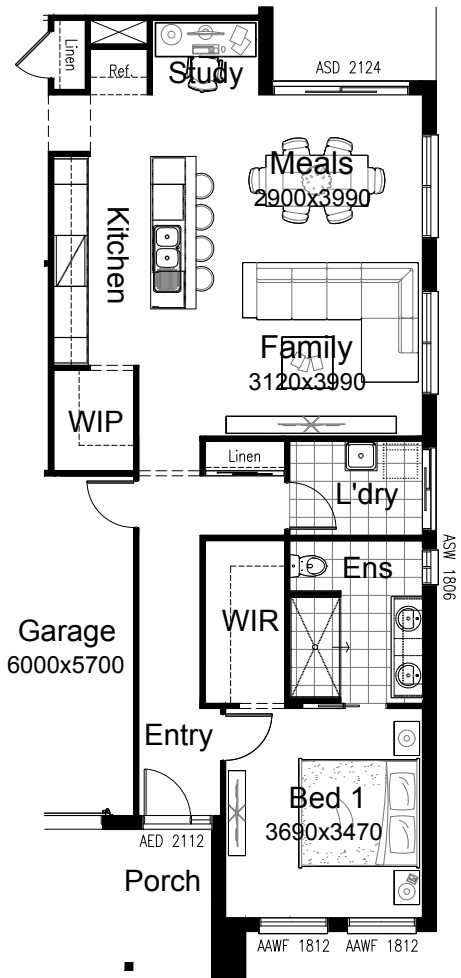
OPTION EP2

Provide Grand Alfresco option with additional light point, 1No. 88x88 painted timber post and tiled roof above. Option adds 10.71m² to the overall house area.



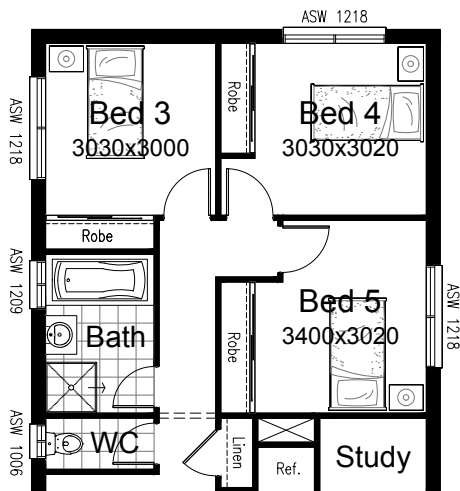
OPTION ENS2

Provide Ensuite option including 900x1800 tiled shower base, 1728mm vanity with double basins and centre drawer unit, 1No. additional double power point, 720mm cavity sliding door, replace ASW1009 window with ASW1806 window, nib wall to side of WC, 800mm wide opening to Walk-in Robe with 330mm bulkhead. Option also extends Ensuite and WIR length by 600mm, space taken from Family/Meals as shown.



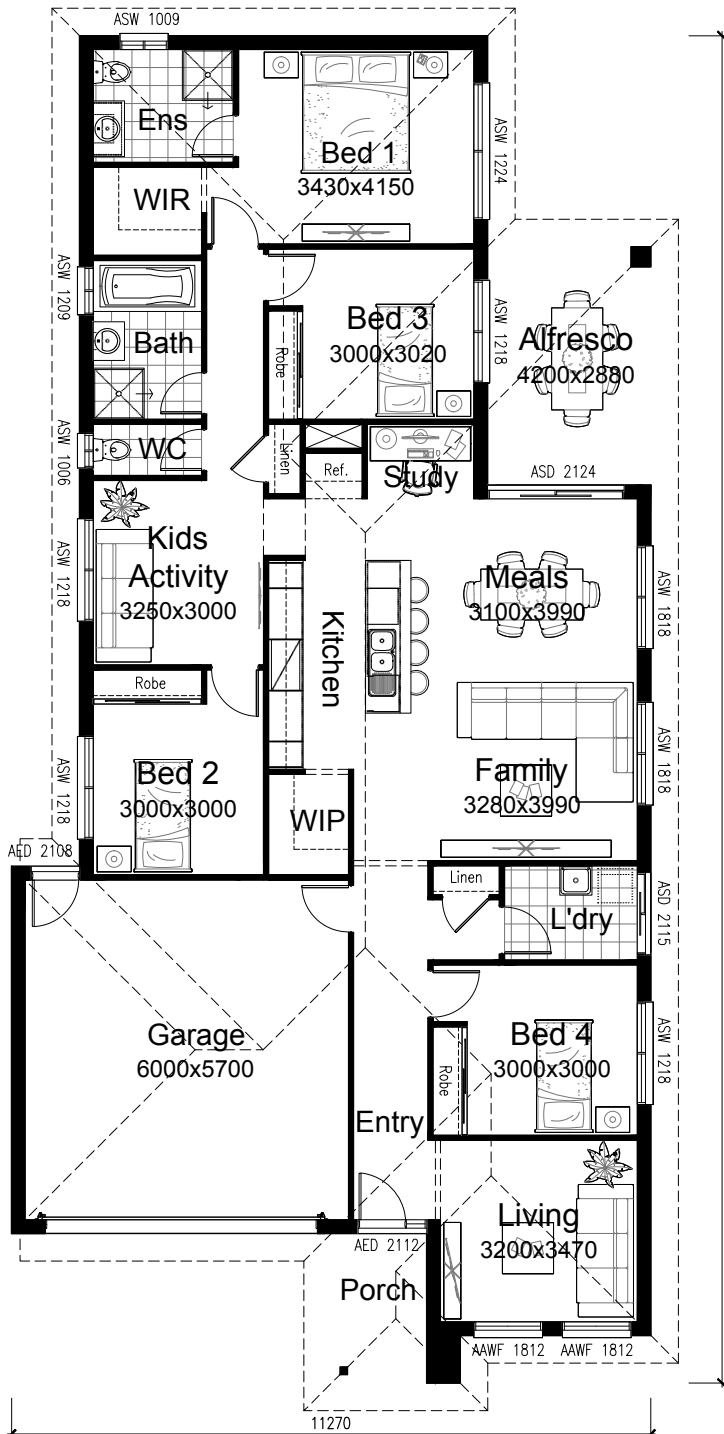
OPTION IP4

Provide 5th bedroom option in lieu of Living, including built-in Robe with vinyl sliding doors, 720mm hinged door, delete 1No. double power point, relocate 2-way light switch to Alfresco from current location to passage and replaces ASD2124 sliding door with ASW1218 sliding window.



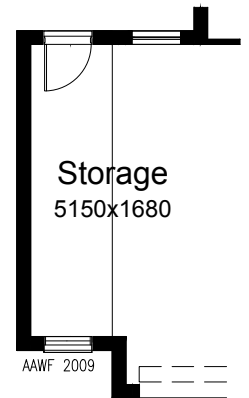
OPTION IP5

Provide floor plan option with Bed 1 to the rear of the home. Option reduces length of Family/Meals by 240mm, moves Living and Bed 4 to the front of the home, reduces Linen cupboard width by 130mm and Bed 3 moves into the previous Living space. Provide ASW1224 window to Bed 1, remove ASD2124 sliding door and provide 982mm wide vanity to Ensuite in lieu of standard.



OPTION G1

Provide extension to Garage to create additional Storage area including additional window to suit. Increases area by 9.46m². Increases width by 1680mm.



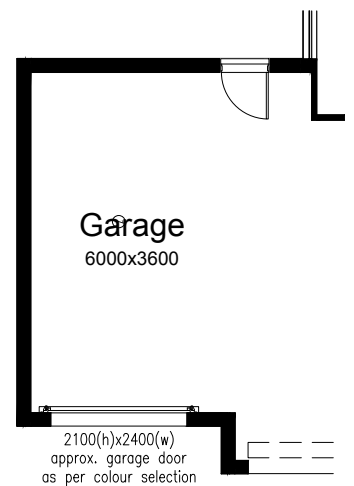
OPTION G2

Provide extension to Garage to create Workshop area including additional window to suit. Increases length by 2400mm. Increases area by 13.51m².



OPTION G3

Provide triple car Garage including additional Garage door as per colour selection. Increases area by 24.50m². Increases width by 3600mm.



*Copyright conditions. All photos and illustrations are representative only. Floor plans and specifications may be varied by Burbank without notice, the dimensions are diagrammatic only and a Building Contract with final drawings will display correct dimensions and detail. All designs are the property of Burbank and must not be used, reproduced, copied or varied, wholly or in part without written permission from an authorised Burbank representative. Copyright Burbank Australia (SA) Pty Ltd. ABN 96 165 533 406. BLD 266709.