

Facades available:

Callington, Harrogate, Kent

Lancaster, Sheffield, Swansea

Wiltshire, Eastwood

Overall home width 9.05m

Overall home length 21.83m

Residence 130.9m² 14.1sq

Garage 36.1m² 3.9sq

Porch 3.1m² 0.3sq

Total 170.1m² 18.3sq

Listed details based on Sheffield facade floorplan (illustrated)

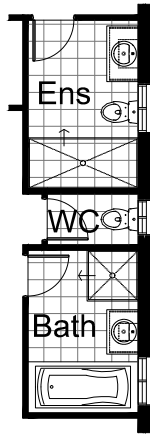
FLOORPLAN OPTIONS

We personalise our floorplans.

Talk to us about our huge range of ready-to-go design options or simply visit www.burbank.com.au/south-australia for more details.

OPTION ENS1

Provide Ensuite upgrade with wall to wall tiled shower base in lieu of 900mm x 900mm polymarble shower base, delete plaster lined wall to Ensuite/WC and relocate WC toilet and WC/Bath flush panel hinged doors to suit.



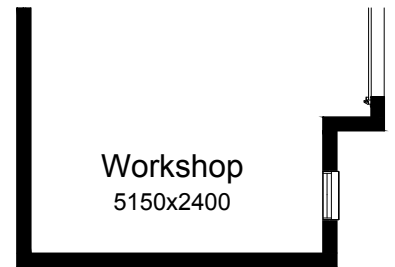
OPTION G1

Provide extension to Garage to create additional Storage area. Increases area by 4.58m². Increases width by 850mm.



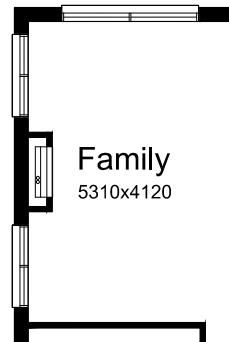
OPTION G2

Provide extension to Garage to create Workshop area including additional window to suit. Increases length by 2400mm. Increases area by 13.51m².



OPTION IP1

Provide Ensuite upgrade including 1200mm x 900mm tiled shower base with relocation of vanity and window.



OPTION EP1

Provide Laundry upgrade with laminated insert trough, 1no. 900mm base cupboard, 1no. 900mm overhead cupboard with additional tiled splash back and bench top to suit.

