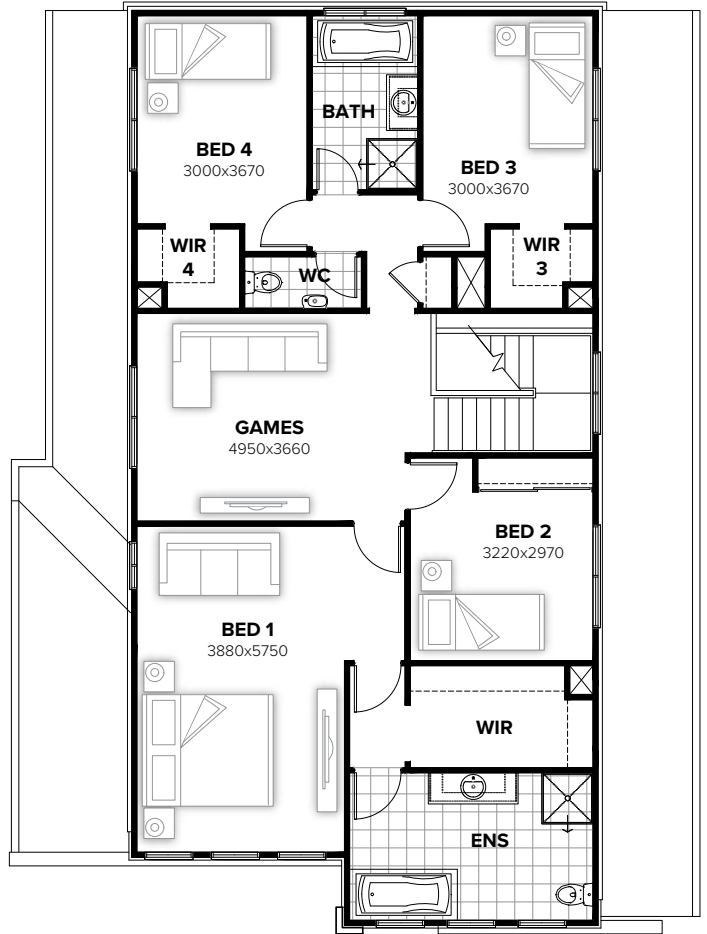


GROUND FLOOR



FIRST FLOOR

FLOORPLAN OPTIONS

We personalise our floorplans. Talk to us about our huge range of ready-to-go design options or simply visit www.burbank.com.au/south-australia for more details.

Facades available:

Cambridge, Coventry, Halifax, Yorke
Northampton, Oxford, Westminster

Overall home width 11.51m
Overall home length 16.43m

Residence	257.4m ²	27.7sq
Garage	37.7m ²	4.1sq
Porch	3.0m ²	0.3sq
Total	298.1m²	32.1sq

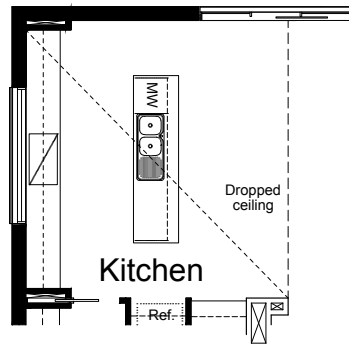
Listed details based on Coventry facade floorplan (illustrated)

*Copyright conditions. All photos and illustrations are representative only. Floor plans and specifications may be varied by Burbank without notice, the dimensions are diagrammatic only and a Building Contract with final drawings will display correct dimensions and detail. All designs are the property of Burbank and must not be used, reproduced, copied or varied, wholly or in part without written permission from an authorised Burbank representative. Copyright Burbank Australia (SA) Pty Ltd. ABN 96 165 533 406. BLD 266709.

Call 13 BURBANK
Visit burbank.com.au

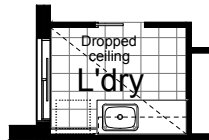
OPTION K1

Provide Kitchen upgrade by increasing opening to kitchen by 400mm and provide
7no. 900mm base cabinets,
5no. 900mm overhead cabinets,
1no. 900mm underbench oven with cooktop & retractable rangehood concealed within 900mm overhead cupboard,
1no. MW provision with pot drawer,
1no. 450mm drawers unit to island benchtop,
1no. open shelf above refrigerator space,
Additional tiled splash back and bench top to suit.
2440mm dropped ceiling to Kitchen is standard.



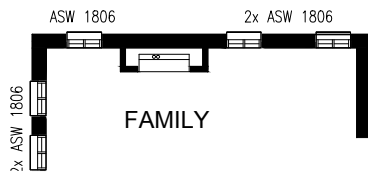
OPTION LD1

Provide Laundry upgrade with Laminated insert trough,
1no. 700mm base cabinet,
1no. 800mm base cabinet,
1no. 700mm overhead cupboard,
1no. 800mm overhead cupboard,
Additional tiled splash back and bench top to suit.



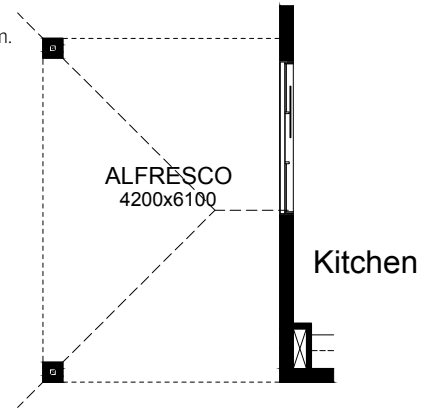
OPTION IP1

Provide Real Flame Inspire 900 gas fireplace,
400mm off floor level in a 1550mm x 420mm boxed out plaster wall with a 4 sided black fascia to Family room side wall.
Provide 1No. ASW1806 window to Family.



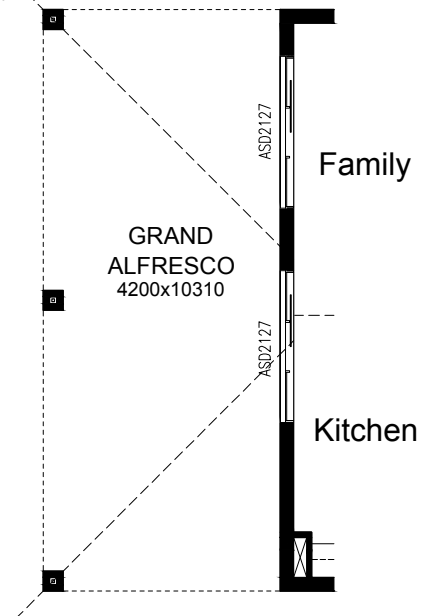
OPTION EP1

Provide Alfresco option with
2no. brick piers and earth floor to Alfresco.
Increases area by 25.62m².
Increases length by 4200mm.



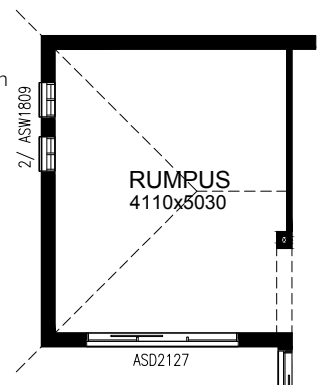
OPTION EP2

Provide Grand Alfresco with 3no. brick piers and earth floor to Alfresco.
Provide 1No. ASD2127 to Family
Increases area by 43.30m².
Increases length by 4200mm.



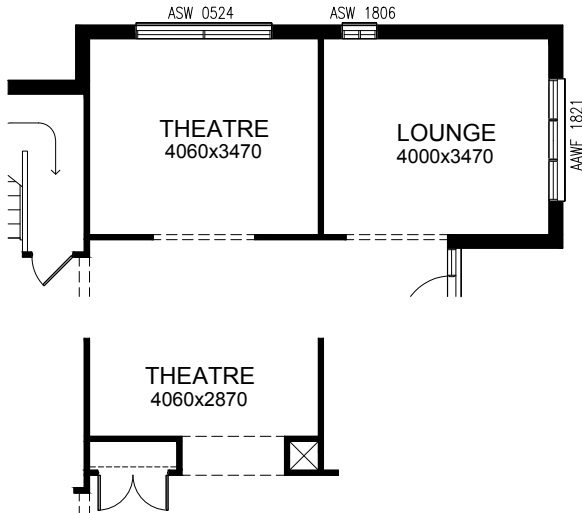
OPTION EP3

Provide Rumpus to rear of Family with
2no. ASW1809 windows,
1No. ASD2127 sliding door.
Increases area by 23.14m².
Increases length by 4200mm.



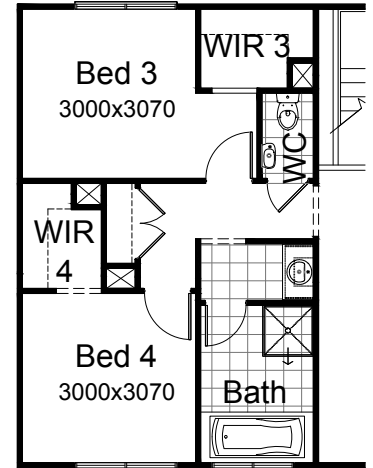
OPTION IP2

Provide Theatre & Lounge in lieu of Guest/ENS2 & Retreat
Provide 1No. 0524 to Theatre in lieu of standard
Provide 1No. 1806 to Lounge.



OPTION IP4

Provide alternative layout to Bath, Bed 3 and Bed 4 to provide vestibule option to bathroom. This also reduces the sizing of Bed 3 and 4.



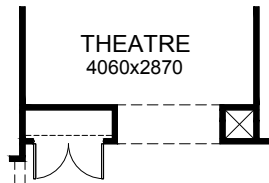
OPTION IP5

Provide mirrored layout to Bed 1, Ens & WIR.
Provide AAW1206 to Bed 1.



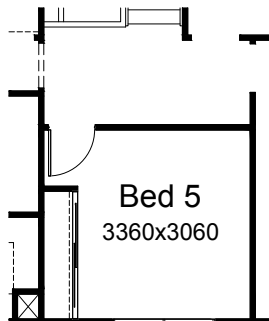
OPTION IP6

Provide Theatre & Lounge option with Cloak to Entry including
4no. 450mm wide shelving,
2no. 620mm hinged doors.
Note: Can only be selected with Option IP2



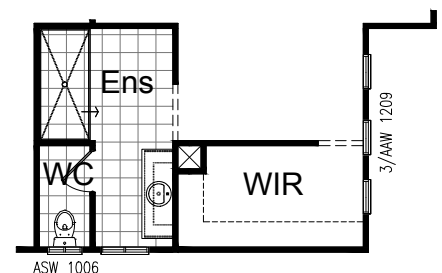
OPTION IP3

Provide Bed 5 in lieu of Games.
Provide robe with 450mm shelf and hanging rail to Bed 5.



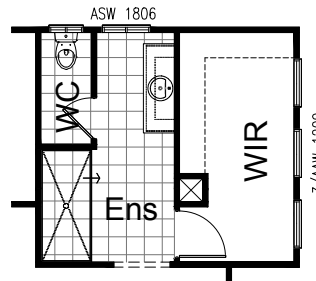
OPTION ENS1

Provide Ensuite without bath (Available only with Option IP5)
Provide ASW1006 to Ensuite WC.
Provide 3no. AAW1206 to facade in lieu of standard



OPTION ENS2

Provide Ensuite without bath (to standard Bed 1 & Ens. layout)
 Swap location of Ens. and WIR.



OPTION G1

Provide extension to Garage to create additional Storage area.
 Increases area by 4.58m².
 Increases width by 850mm.



OPTION G2

Provide extension to Garage to create Workshop area including AAWF1812 window to suit.
 Increases width by 2400mm.
 Increases area by 13.51m².

