

**Facades available:**

Coastal, Delta, Kingston, Nouveau	
Salisbury, Traditional, York	
<b>Overall home width</b>	<b>12.83m</b>
<b>Overall home length</b>	<b>21.47m</b>

Residence	184.2m <sup>2</sup>	19.8sq
Garage	37.4m <sup>2</sup>	4.0sq
Porch	3.7m <sup>2</sup>	0.4sq
Alfresco	12.7m <sup>2</sup>	1.4sq
<b>Total</b>	<b>238.0m<sup>2</sup></b>	<b>25.6sq</b>

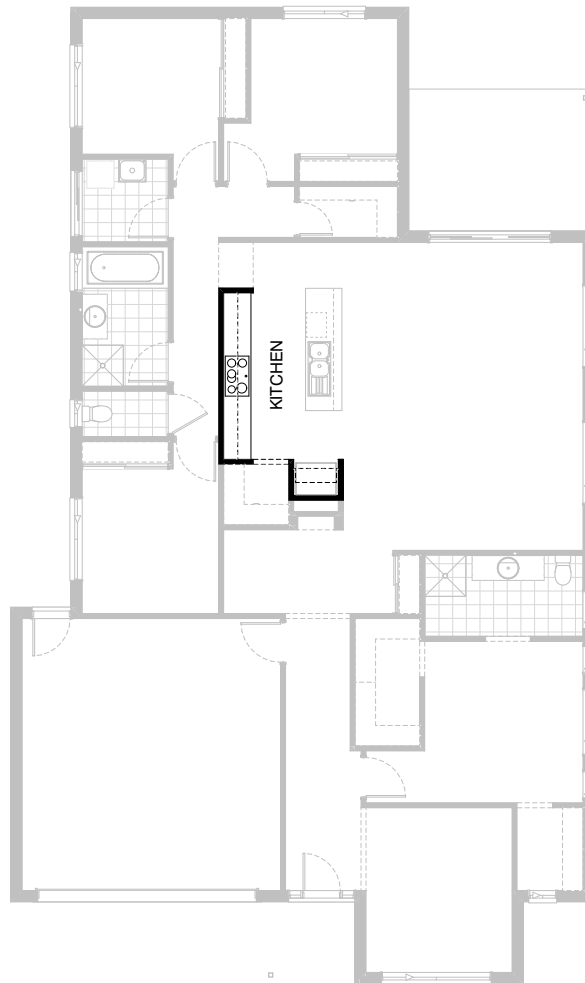
**FLOORPLAN OPTIONS**

We personalise our floorplans. Talk to us about our huge range of ready-to-go design options.

Listed details based on Traditional facade floorplan (illustrated)

\*Copyright conditions. All photos and illustrations are representative only. Floor plans and specifications may be varied by Burbank without notice, the dimensions are diagrammatic only and a Building Contract with final drawings will display correct dimensions and detail. All designs are the property of Burbank and must not be used, reproduced, copied or varied, wholly or in part without written permission from an authorised Burbank representative. Copyright Burbank Australia (QLD) Pty Ltd. ABN 77 103 014 615. QBCC 1046544.

**Call 13 BURBANK**  
**Visit [burbank.com.au](http://burbank.com.au)**



### Option Kitchen01

Provide Kitchen upgrade option including:  
900mm open shelf over refrigerator space,  
2No. 900mm overhead cupboards,  
2No. 450 overhead cupboards.



### Option Kitchen02

Provide U-shaped Kitchen upgrade option including:  
 Additional benchtop and tiled splashback,  
 900mm laminate open shelf over refrigerator space,  
 900mm retractable rangehood, 900mm cooktop,  
 900mm underbench oven,  
 dishwasher provision,  
 microwave provision with pot drawer,  
 1No. 450mm drawer unit,  
 3No. 900mm base cupboards,  
 2No. 900mm base corner cupboards  
 with bi-fold doors,  
 1No. 600mm base cupboard,  
 2No. 900mm overhead cupboards,  
 1No. 800mm overhead cupboard with open shelf.  
 Bathroom and WC flips locations.

Note:  
 Option not available with External01 & External02.



### Option Kitchen03

Provide L-shaped Kitchen upgrade option, including:  
 Additional benchtop and tiled splashback,  
 900mm laminate open shelf over refrigerator space,  
 900mm retractable rangehood,  
 900mm cooktop, 900mm underbench oven,  
 dishwasher provision,  
 microwave provision with pot drawer,  
 1No. 450mm drawer unit,  
 3No. 900mm base cupboards,  
 1No. 900mm base corner cupboard  
 with bi-fold doors,  
 1No. 700mm base cupboard,  
 1No. 350mm base cupboard,  
 2No. 900mm overhead cupboards,  
 1No. 800mm overhead cupboard with open shelf.  
 Bathroom and WC flips locations.

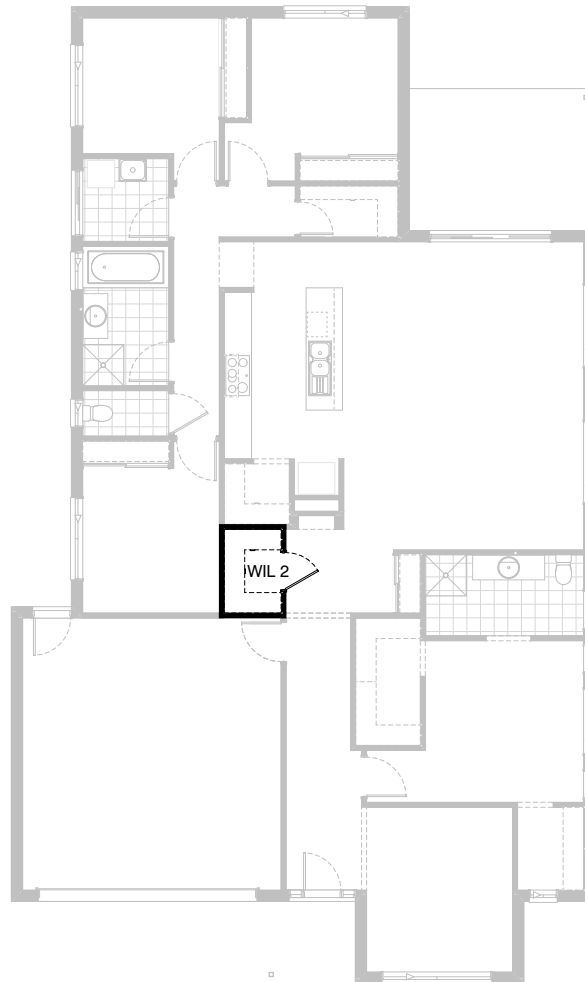
Note:  
 Option not available with External01 & External02.



### Option Kitchen04

Provide Kitchen upgrade option with rearranged layout and Butler's Pantry in lieu of WIP including, Kitchen:  
 900mm retractable rangehood,  
 900mm cooktop, dishwasher provision,  
 1No. 450mm drawer unit,  
 5No. 900mm base cupboards,  
 2No. 450mm base cupboards,  
 2No. 900mm overhead cupboards,  
 2No. 450mm overhead cupboard with open shelves.  
 2No. 600mm laminate oven towers with microwave provisions.  
 Butler's:  
 Additional benchtop and tiled splashback,  
 1No. single bowl sink,  
 1No. 900mm laminate open shelf over refrigerator space, 1No. 900mm base cupboard,

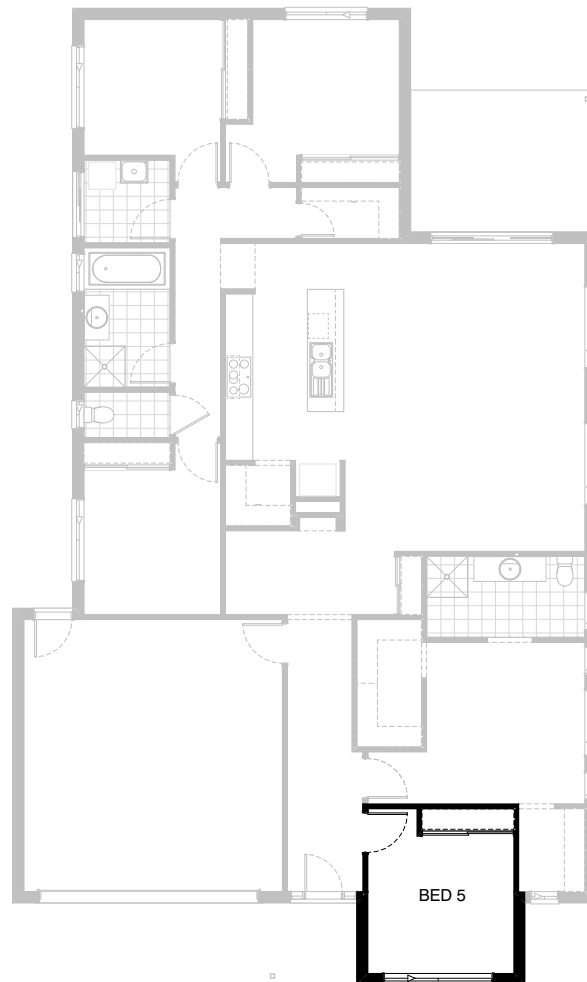
1No. 450mm base cupboard, and 450mm shelving,  
 2No. 300mm deep 60mm thick open shelves over sink, 820mm cavity sliding door.  
 Option removes Study and Linen cupboard and provides relocated Study Nook with bulkhead over and built-in joinery including, Study Nook:  
 600mm deep 32mm thick laminate benchtop,  
 2No. 300mm deep 60mm thick open shelves over.  
 Bathroom and WC flips locations.  
 Note:  
 Option not available with Ensuite02, Ensuite03, Ensuite04, Ensuite05, Internal01, Internal04, External01 & External02.



### Option Internal01

Provide Walk-in Linen in lieu of Study Nook,  
including:  
Additional stud and plaster wall with  
820mm hinged door and  
450mm shelving.

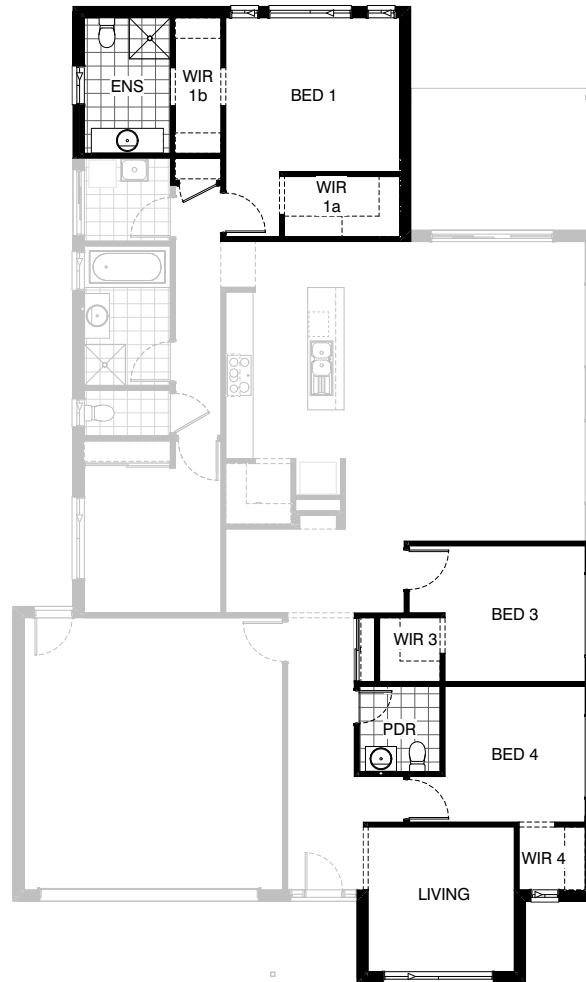
Note:  
Option not available with options Internal04,  
External01 & External02.



### Option Internal02

Provide BED 5 option in lieu of Living room,  
including:  
Built-in Robe with 450mm shelf,  
870mm hinged door in lieu of bulkhead opening.

Note:  
Option not available with Internal03 & External02.

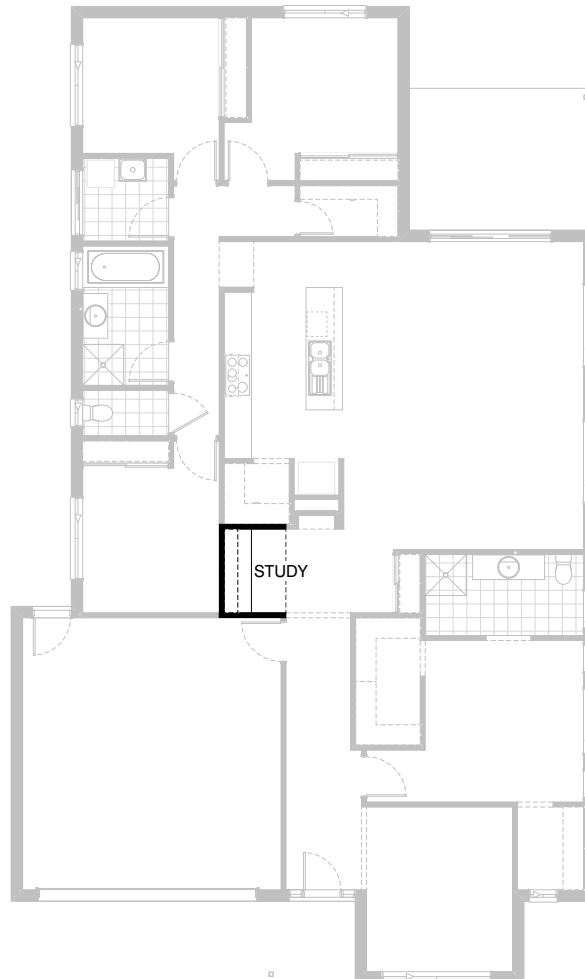


**Option Internal03**

Provide floor plan option which moves Bed 1 to the rear of the home as shown.

Note:  
Option not available with Ensuite01, Ensuite02, Internal02, Internal05, External01, External02 & External03.

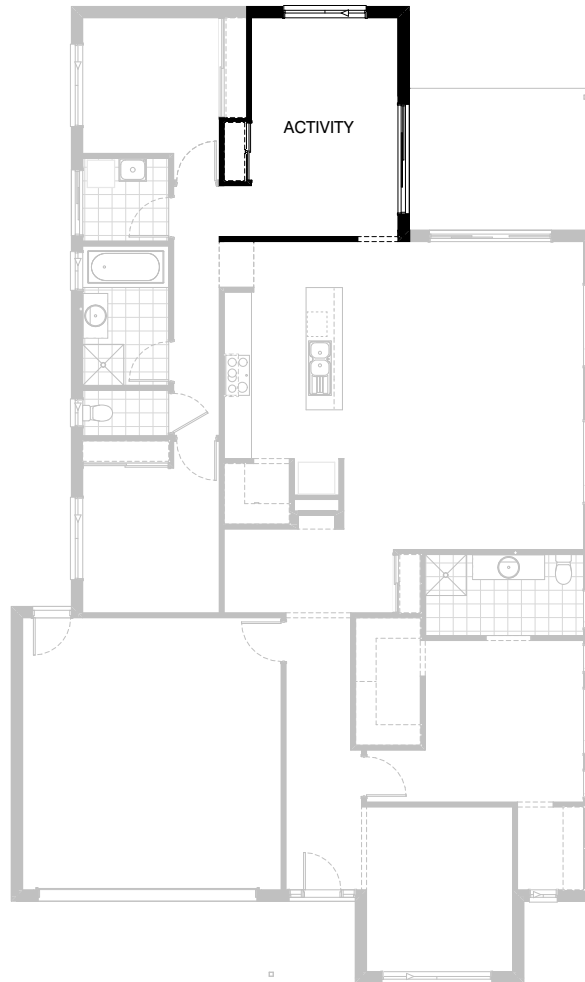




### Option Internal04

Provide built-in joinery option to Study Nook, including:  
600mm deep 32mm thick laminate benchtop,  
1No. 450mm drawer unit under desk,  
2No. 300mm deep 60mm thick open shelves over.  
Provide bulkhead over as shown.

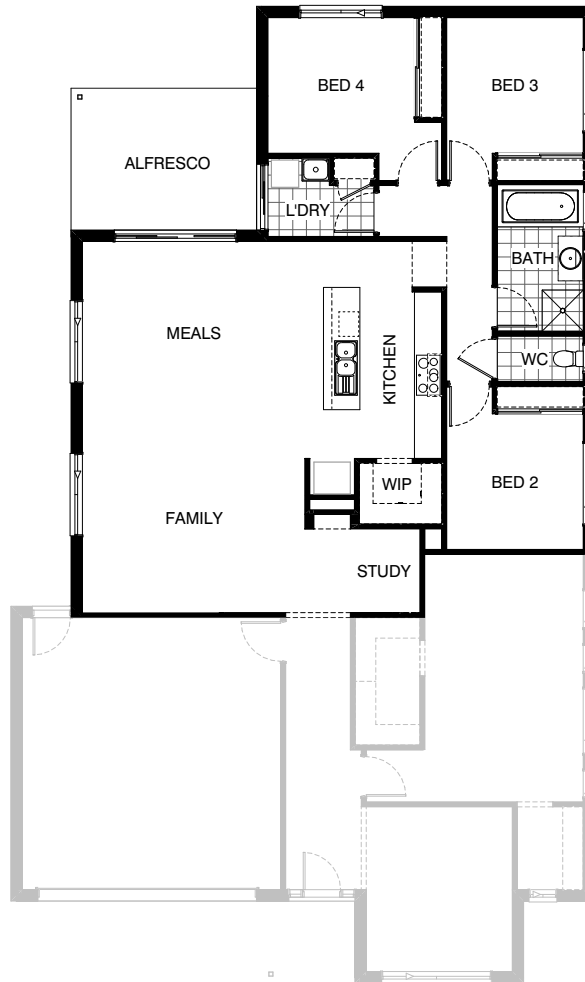
Note:  
Option not available with Internal01, External01 & External02.



### Option Internal05

Provide Activity room in lieu of Bed 4 including:  
Additional 2110mm x 2410mm aluminium sliding door,  
remove built-in Robe with sliding doors and  
450mm shelf with hanging rail, remove 870mm hinged door,  
remove Walk-in Linen with 450mm shelving and  
720mm hinged door, provide Linen cupboard with  
sliding doors and 450mm shelving. Provide 900mm wide  
bulkhead opening to Meals from Activity.

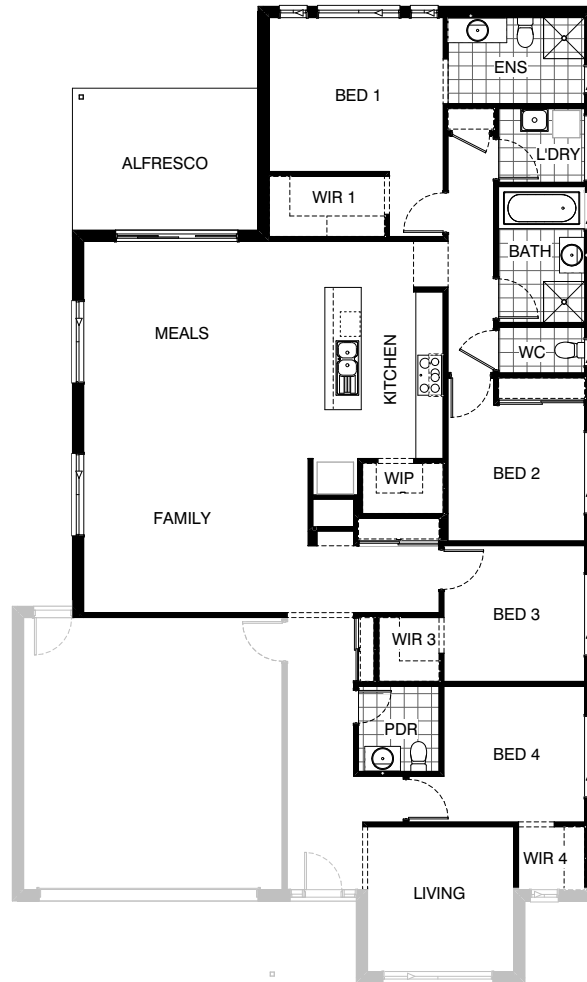
Note:  
Option not available with Ensuite03, Ensuite04, Ensuite05,  
Internal03, External01 & External02



**Option External01**

Provide floor plan option which mirrors the rear of the home as shown.

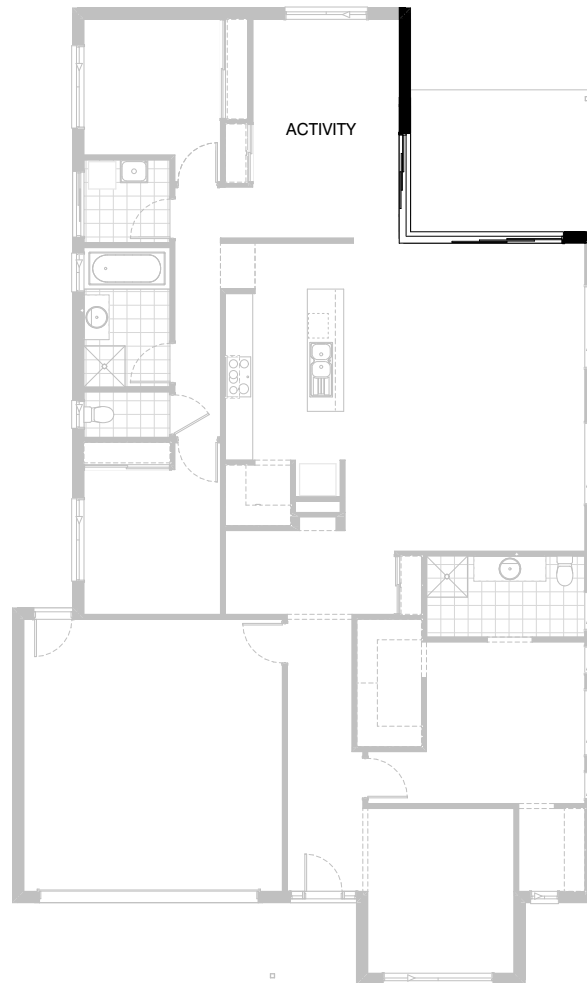
Note:  
Option not available with Kitchen02, Kitchen03, Kitchen04, Ensuite03, Ensuite04, Ensuite05, Internal01, Internal03, Internal04, Internal05, External02 & External03.



**Option External02**

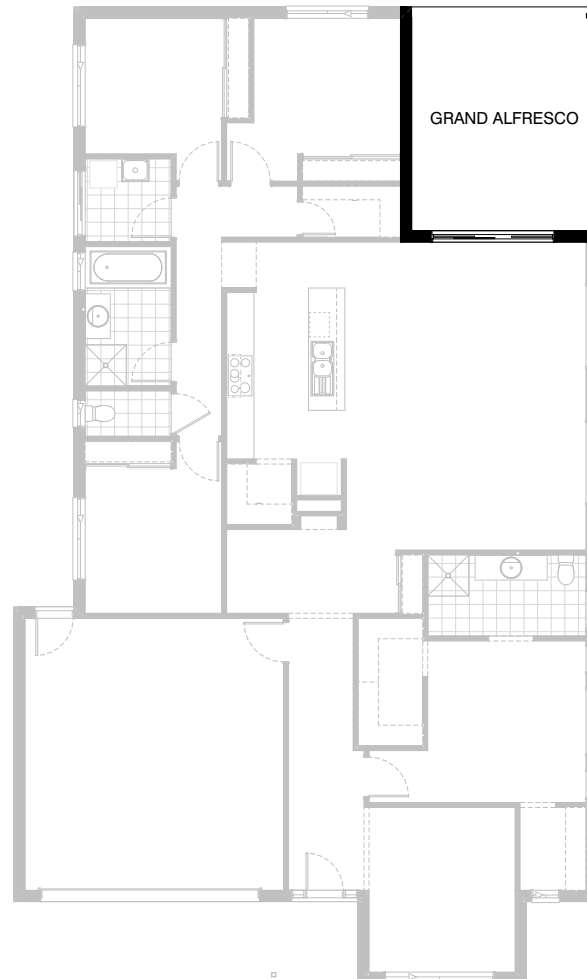
Provide floor plan option which mirrors the rear of the home with Bed 1 to the rear as shown.

Note:  
Option not available with Kitchen02, Kitchen03, Kitchen04, Ensuite01, Ensuite02, Ensuite03, Ensuite04, Internal01, Internal02, Internal03, Internal04, Internal05, External01 & External03.



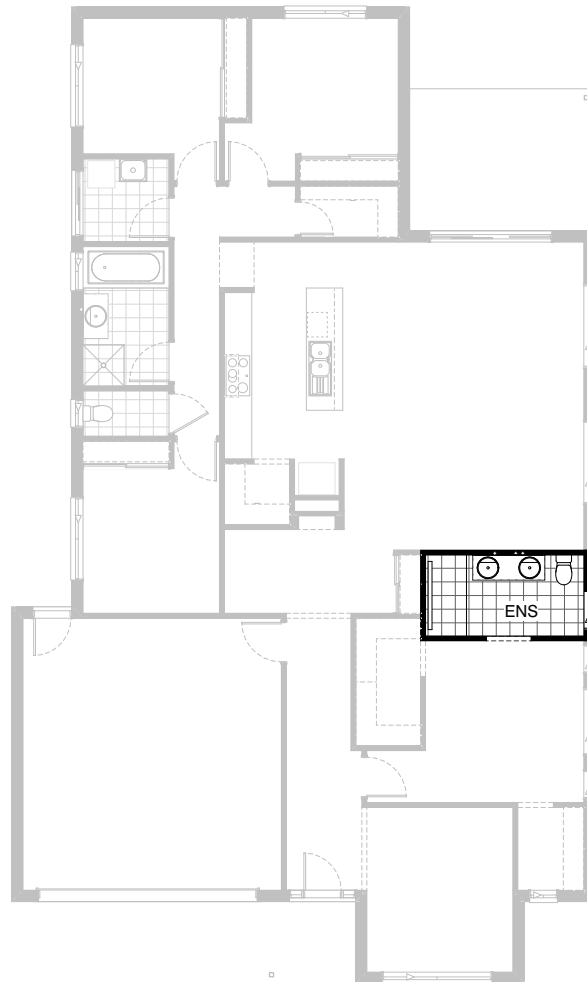
### Option External03

Provide corner sliding door option.  
Remove 2110mm x 2690mm,  
2110mm x 2410mm aluminium sliding doors and replace with  
2107mm x 2410mm x 3610mm  
aluminium corner sliding stacker door.  
Provide 2No. 75mm x 75mm steel posts with steel beam to  
Engineer's design.



### Option External04

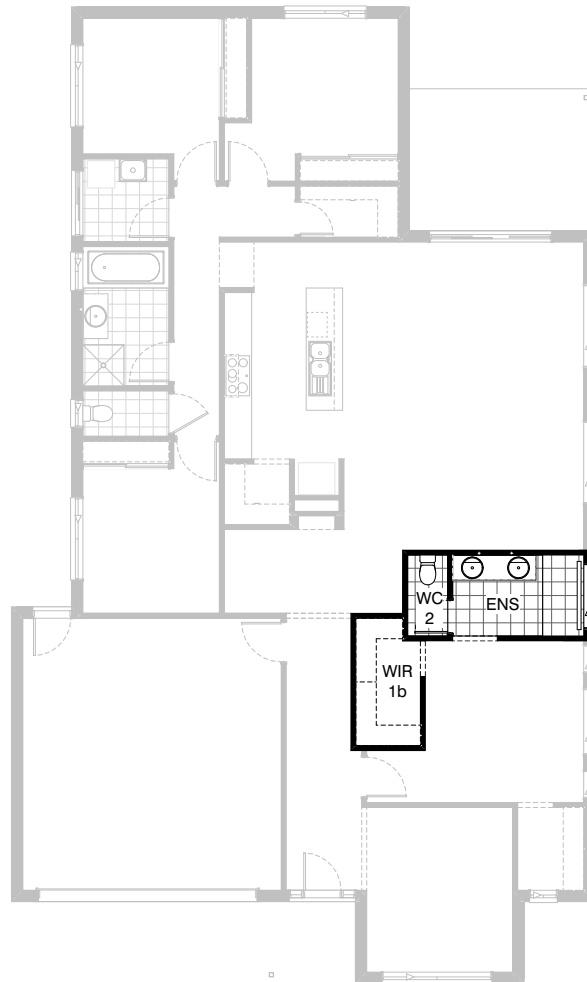
Provide Grand Alfresco option,  
option adds 7.34m<sup>2</sup> to the total floor area.



### Option Ensuite01

Provide Ensuite upgrade option including:  
1582mm vanity with double basins,  
1780mm x 900mm tiled shower base with grate drain.

Note:  
Option not available with Internal03 & External02.

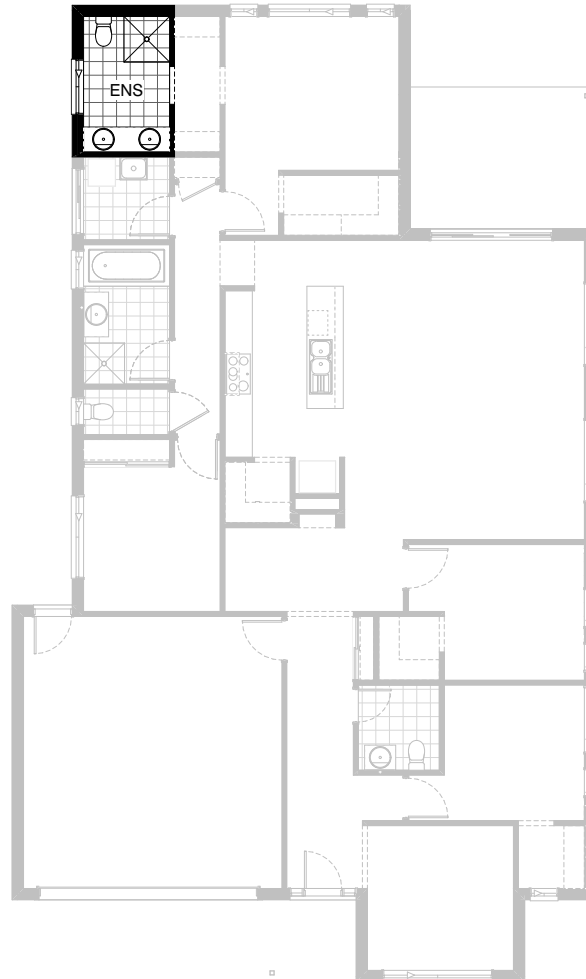


### Option Ensuite02

Provide Ensuite upgrade option with rearranged layout, including:  
1782mm vanity with 1830mm benchtop butting into one side wall and double basins,  
1780mm x 900mm wall-to-wall tiled shower base with grate drain, enclosed WC with 720mm hinged door.  
Provide 350mm x 1450mm aluminium sliding window over shower in lieu of standard. Remove built-in Linen cupboard.

Note:  
Option not available with Internal03 & External02.





### Option Ensuite03

Provide Ensuite upgrade option with rearranged layout including:  
1 No. 1782mm vanity with double basins including 1 row tiling beneath mirror to suit wall-to-wall benchtop including returns  
1000mm x 1000mm tiled shower base, relocated toilet pan.  
Provide 1027mm x 1210mm aluminium sliding window in lieu of standard.

Note:  
Option only available with Internal03.

Option not available with Internal02, Internal05, External01, External02 & External03.

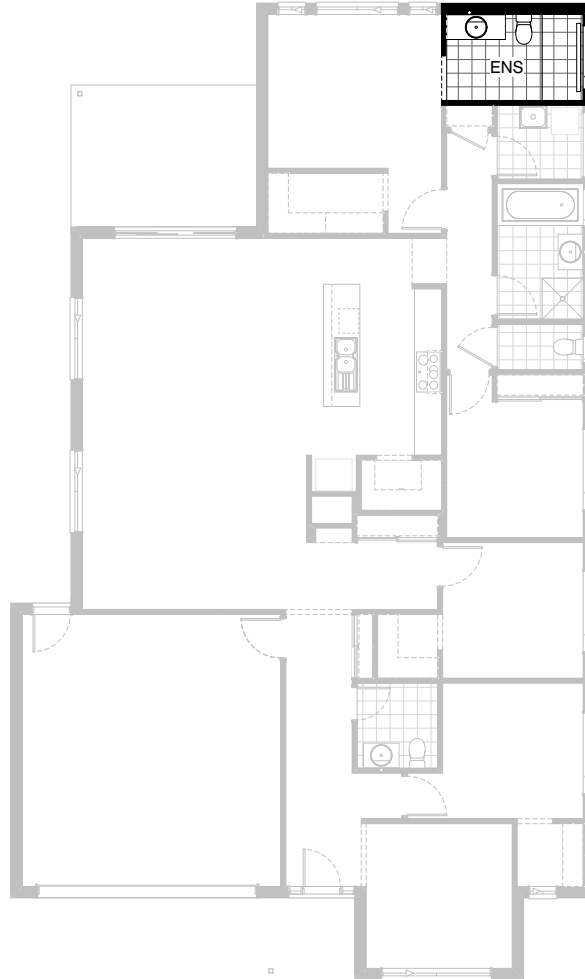


### Option Ensuite04

Provide Ensuite upgrade option with rearranged layout, including:  
 1780mm freestanding bath,  
 1782mm vanity with double basins,  
 1200mm x 900mm tiled shower base with grate drain,  
 enclosed WC with 720mm hinged door.  
 Provide 1200mm x 610mm and 1200mm x 1810mm aluminium sliding windows in lieu of standard.  
 Remove Walk-in Robe to accommodate.

Note:  
 Option only available with Internal03.

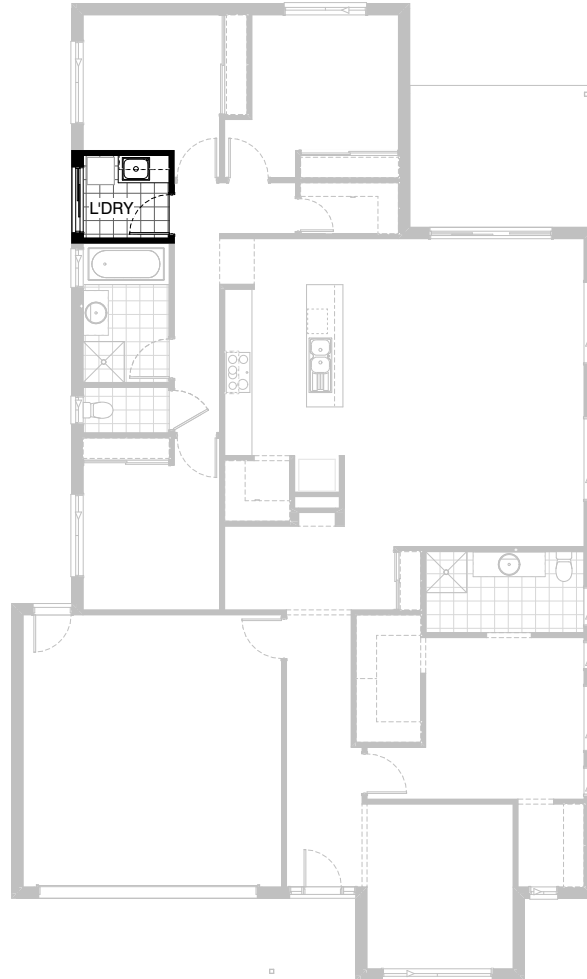
Option not available with Internal02, Internal05, External01, External02 & External03.



### Option Ensuite05

Provide Ensuite upgrade option with rearranged layout, including:  
1890mm x 900mm tiled shower base with grate drain in lieu of standard.  
350mm x 1450mm aluminium sliding window over shower in lieu of 1800mm x 610mm.

Note:  
Option only available with External02.



### Option Laundry01

Provide Laundry upgrade including laminate base cupboards and stainless steel inset trough including:  
1No. 700mm base cupboard,  
1No. 350mm base cupboard,  
1No. 700mm overhead cupboard,  
1No. 350mm overhead cupboard,  
additional benchtop and tiled splashback to suit.

Note:  
Option not available with External01.