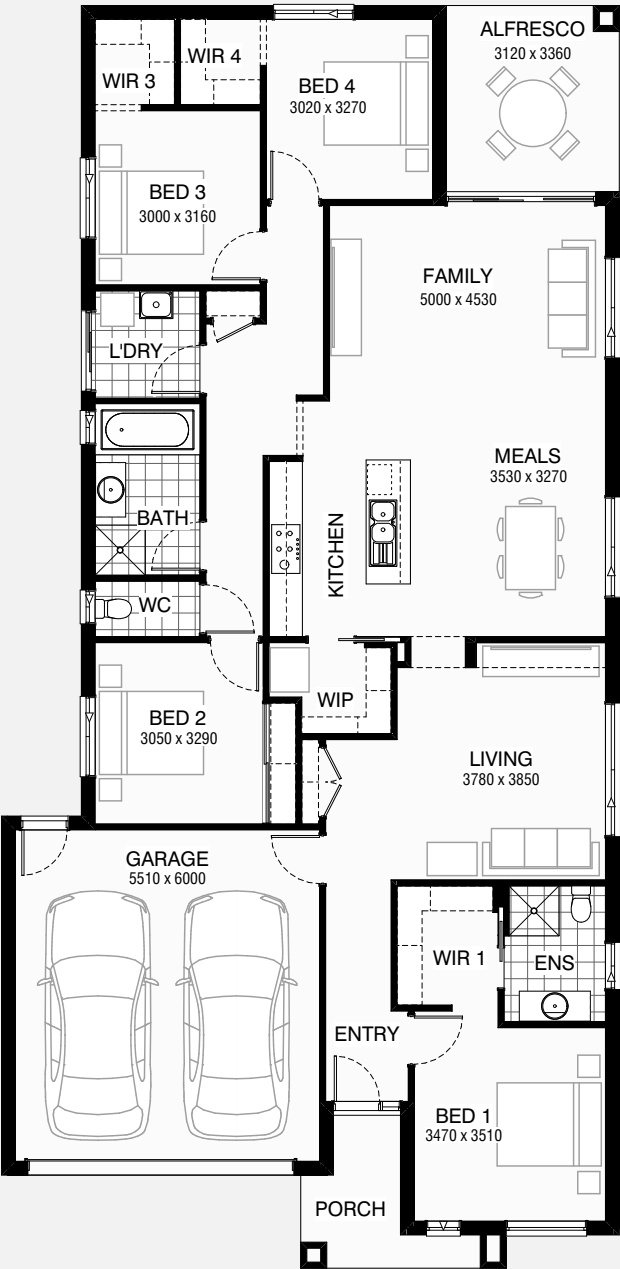


# KENWOOD 224

4 2 2

Total squares 24.0sq



B  
SERIES

Minimum  
Lot Width  
12.5m

Minimum  
Lot Length  
30.0m

**Design Dimensions**  
11,150mm(W) x 22,790mm(L).

**Facade Choices**  
Brentwood, Glendale, Inglewood,  
Malibu, Northridge, Pasadena, Santa Monica.  
Details based on Inglewood façade floorplan (illustrated)

## DESIGN DIMENSIONS

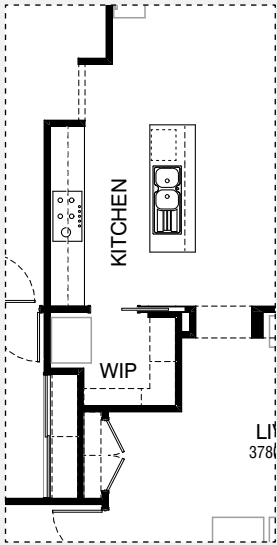
Residence	170.3m <sup>2</sup>	18.3sq
Garage	36.4m <sup>2</sup>	3.9sq
Porch	5.5m <sup>2</sup>	0.6sq
Alfresco	10.5m <sup>2</sup>	1.1sq
<b>Total</b>	<b>222.7m<sup>2</sup></b>	<b>24.0sq</b>

**Burbank**

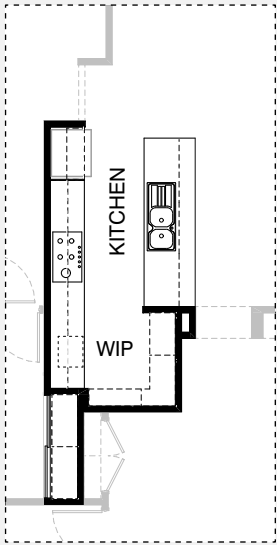
\*Copyright conditions. All photos and illustrations are representative only. Floor plans and specifications may be varied by Burbank without notice, the dimensions are diagrammatic only and a Building Contract with final drawings will display correct dimensions and detail. All designs are the property of Burbank and must not be used, reproduced, copied or varied, wholly or in part without written permission from an authorised Burbank representative. Copyright Burbank Australia Pty Ltd. ABN 91 007 099 872. Builders Registration Number CDB-U-52603.



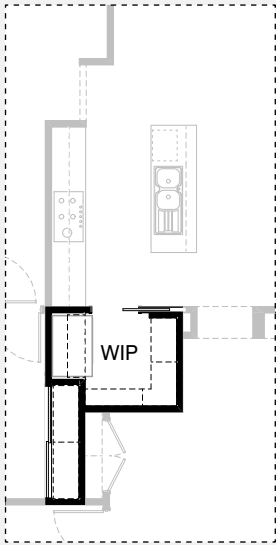
KITCHEN OPTIONS



Master Kitchen Design

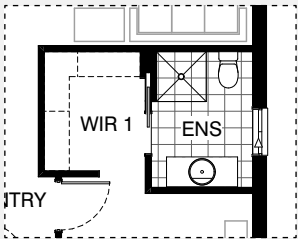


K1

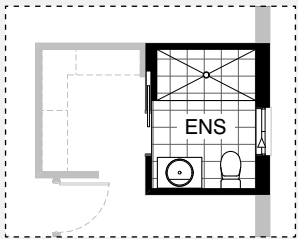


K2

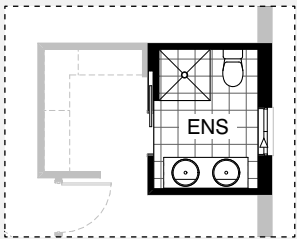
ENSUITE OPTIONS



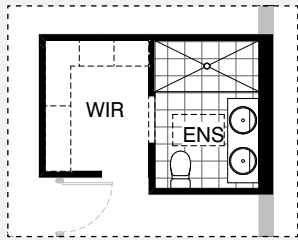
Master Ensuite Design



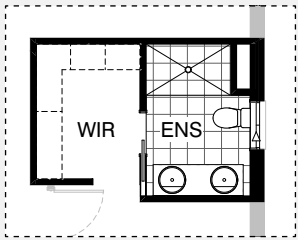
EN1



EN2

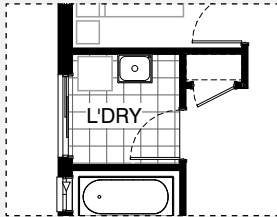


EN3

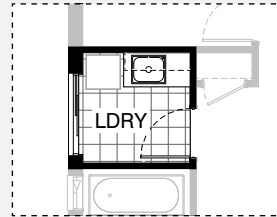


EN4

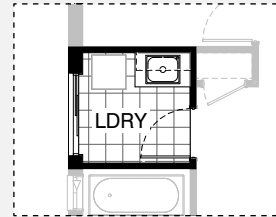
LAUNDRY OPTION



Master Laundry Design

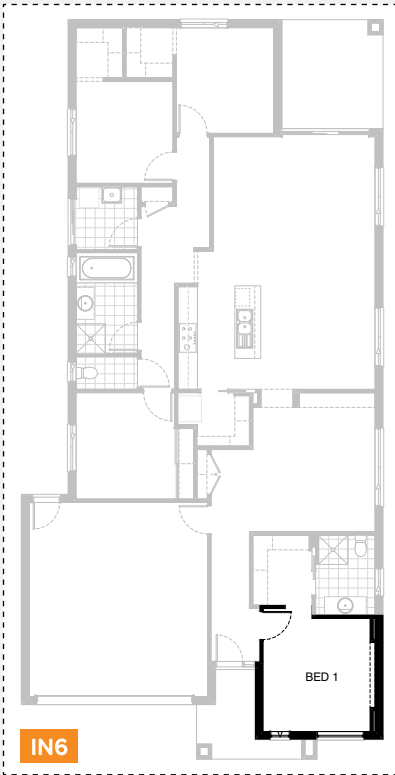
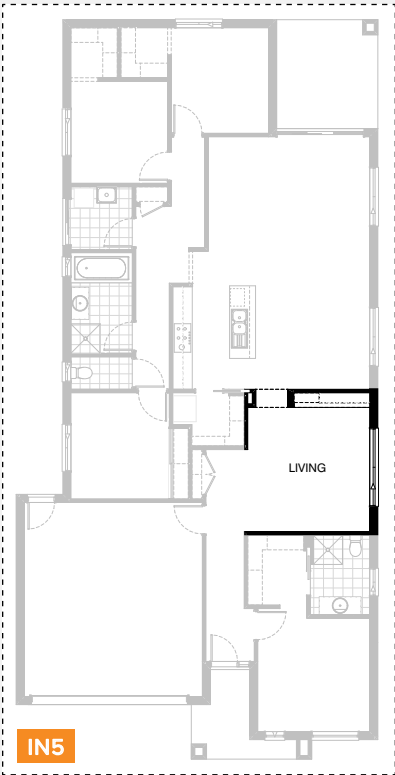
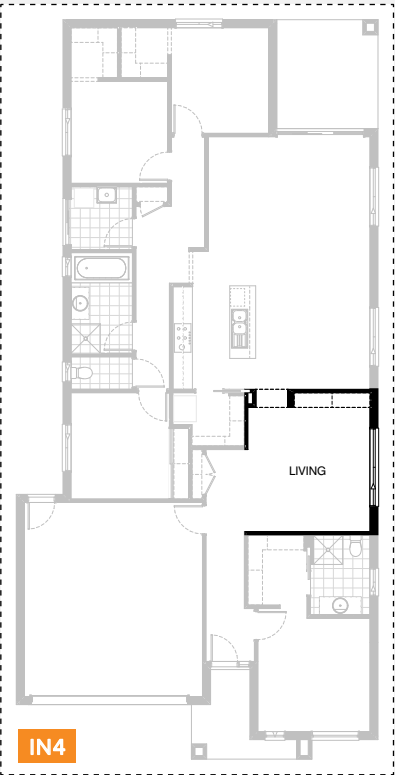
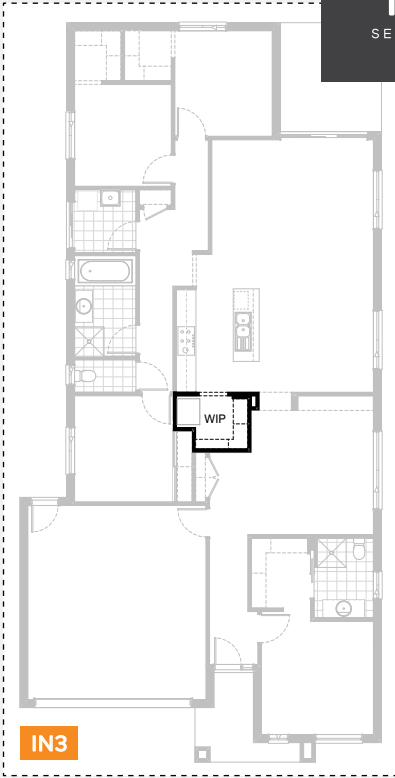
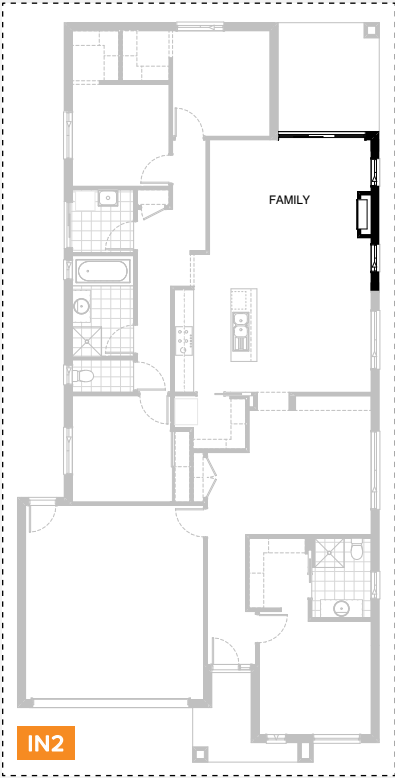
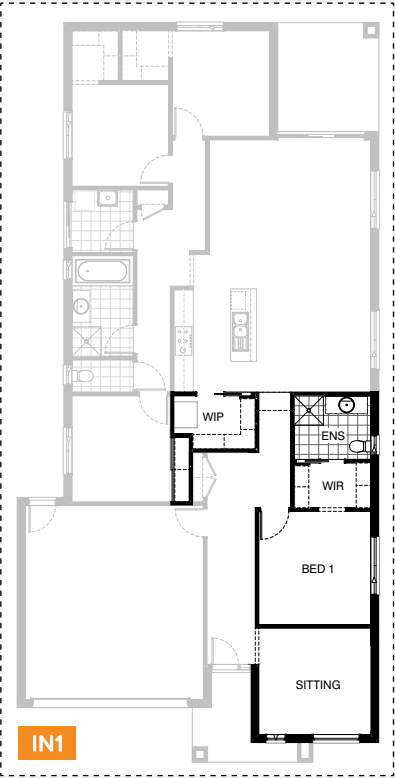


LD1



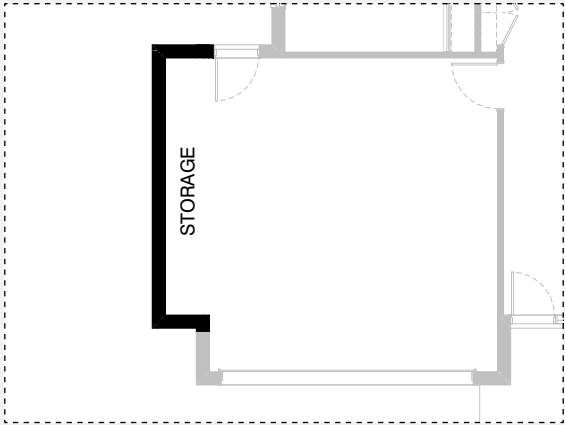
LD2

INTERNAL OPTIONS

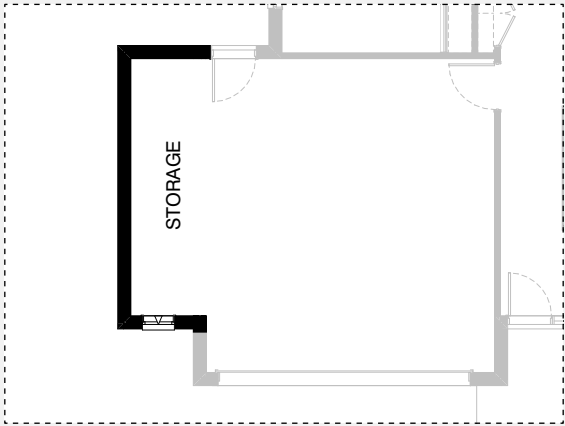




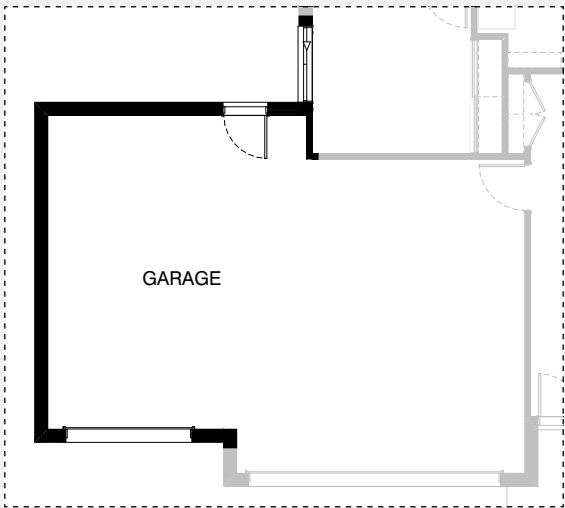
GARAGE OPTIONS



G1



G2



G3

# KENWOOD 224

## OPTION DESCRIPTIONS

### Kitchen Option 01

Provide Kitchen upgrade including removing wall between Kitchen and W.I.P and cavity sliding door. Relocate island bench against W.I.P wall and provide 2no. 900mm cabinets, 1no. 610mm DW. provision and 1no. 450mm drawers in lieu of standard. Reduce void in W.I.P and relocate Refrigerator space to other end of Kitchen bench. Extend Kitchen bench to include 2no. 900mm base cabinets and 632mm MW. provision. 1no. 900mm underbench oven with 900mm cooktop & 900mm retractable rangehood. Provide 3no. 900mm overhead cabinets and open shelf above refrigerator space. Bed 2 robe changes to 1850mm in width, with robe doors change to suit. Island benchtop extended to 900mm wide in lieu of standard 800mm.

### Kitchen Option 02

Provide Kitchen upgrade with laminated open shelf to above refrigerator space. Bed 2 robe changes to 2010mm in width, with robe doors change to suit.

### Ensuite Option 01

Provide Ensuite Option with wall to wall tiled shower base in lieu of 1no. 900mm x 900mm tiled shower base and 1no. 782mm vanity unit in lieu of standard 1no. 1282mm wide vanity unit.

### Ensuite Option 02

Provide Ensuite upgrade by providing 900mm x 900mm tiled shower in lieu of standard. Provide 1482 vanity with double basins.

### Ensuite Option 03

Provide Ensuite upgrade to include wall to wall tiled shower in lieu of standard. Delete nib stud wall in Ensuite. Provide 1482 vanity with double basins and reduce Living by 150mm to make ensuite & W.I.R larger. Delete window in Ensuite and provide fixed Velux skylight 550mm x 980mm.

### Ensuite Option 04

Provide Ensuite Option with 1no. 1500mm x 900mm tiled shower base in lieu of standard, 1no. 1582mm wide vanity unit with 2no. basins and drawer unit. 1no. 1027mm x 850mm aluminium sliding window in lieu of standard. Increase Ensuite and WIR length by 220mm and reduce Living accordingly.

### Laundry Option 01

Provide Laundry upgrade with laminated inset trough, 1no. 800mm base cupboard, 1no. 300mm base cupboard, 1no. 800mm overhead cupboard, 1no. 300mm overhead cupboard and additional tiled splashback and bench top to suit.

### Laundry Option 02

Provide Laundry upgrade with 1no. 900mm base cabinet & 1no 900mm overhead cabinet with s.s. inset trough and additional tiled splashback and laminate bench top to suit.

### Internal Option 01

Provide Sitting area and relocate Bedroom 1, W.I.R and Ensuite in lieu of Living, delete 1no. 1800mm x 850mm sliding window to Ensuite and provide 1no. 1027mm x 610mm aluminium sliding window. Add 1no. 1800mm x 1810mm sliding window to Bed 1 and extend W.I.P width by 310mm to suit. Increase width of ref. space by decreasing width of bed 2 robe by 190mm and adjust shelving to suit. Provide 1820mm gyprock sliding robe door to Bed 2 in lieu of standard.

### Internal Option 02

Provide Real Flame Inspire 900 gas fireplace, 400mm off floor level in a 1400mm x 420mm boxed out plaster wall with a 4 sided black fascia to Family room side wall including additional 2no. 1800mm x 850mm aluminium sliding windows in lieu of standard 1no. 510mm x 1810mm window.

### Internal Option 03

Provide plaster bulkhead 900mm wide opening to W.I.P. in lieu of standard cavity sliding door.

### Internal Option 04

Provide 4no. 450mm wide x 32mm thick laminated shelves to Living alcove.

### Internal Option 05

Provide cabinet and shelving unit, 3no. 750mm wide base cabinets, 2no. 750mm wide overhead cabinets. 2no. open laminated shelves and 32mm thick laminated bench top.

### Internal Option 06

Provide 150mm plaster feature wall protrusion with a 500mm deep plastered bulkhead.

### Garage Option 01

Provide extension to Garage to create additional Storage area. Increases area by 4.53m<sup>2</sup>. Increases width by 840mm.

### Garage Option 02

Provide extension to Garage to create Storage area including additional 2057mm x 610mm aluminium awing window. Increases area by 7.76m<sup>2</sup>. Increases width by 1440mm.

### Garage Option 03

Provide triple car garage including additional garage door as per colour selection Increases area by 24.50m<sup>2</sup>. Increases width by 3600mm. Bed 2 window moves 120mm towards rear of house.

