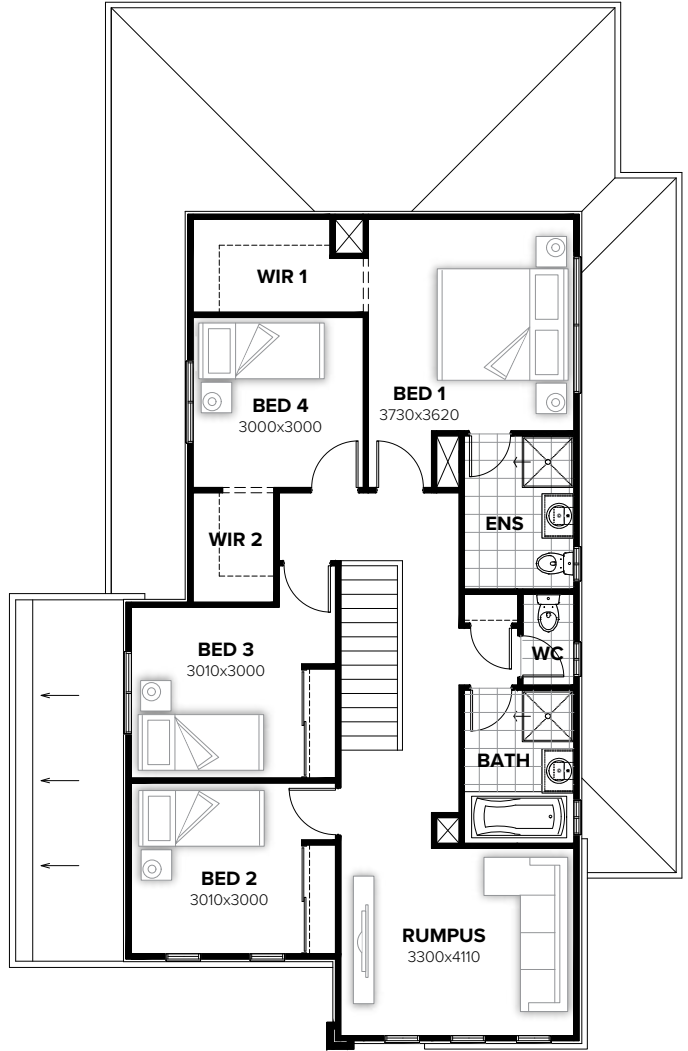


GROUND FLOOR



FIRST FLOOR

**FLOORPLAN OPTIONS**

We personalise our floorplans. Talk to us about our huge range of ready-to-go design options or simply visit [www.burbank.com.au/south-australia](http://www.burbank.com.au/south-australia) for more details.

<b>Facades available:</b>	
Cambridge, Coventry, Halifax, Yorke	
Northampton, Oxford, Westminster	
<b>Overall home width</b>	<b>11.27m</b>
<b>Overall home length</b>	<b>17.87m</b>

Residence	217.0m <sup>2</sup>	23.4sq
Garage	37.2m <sup>2</sup>	4.0sq
Porch	3.1m <sup>2</sup>	0.3sq
Alfresco	10.1m <sup>2</sup>	1.1sq
<b>Total</b>	<b>267.4m<sup>2</sup></b>	<b>28.8sq</b>

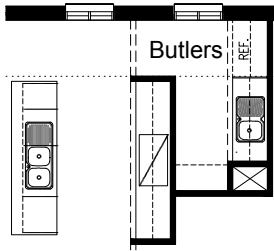
Listed details based on Coventry facade floorplan (illustrated)

\*Copyright conditions. All photos and illustrations are representative only. Floor plans and specifications may be varied by Burbank without notice, the dimensions are diagrammatic only and a Building Contract with final drawings will display correct dimensions and detail. All designs are the property of Burbank and must not be used, reproduced, copied or varied, wholly or in part without written permission from an authorised Burbank representative. Copyright Burbank Australia (SA) Pty Ltd. ABN 96 165 533 406. BLD 266709.

**Call 13 BURBANK**  
**Visit [burbank.com.au](http://burbank.com.au)**

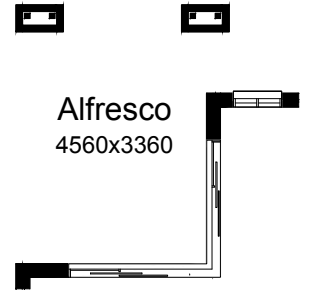
**OPTION IP1**

Provide Butlers upgrade by extending WIP and deleting WIL.  
Provide 2no. 700mm base cupboards,  
2no. 700mm overhead cupboards &  
1no. 900mm overhead cupboard  
above ref space.



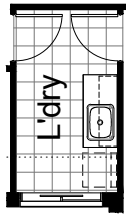
**OPTION EP1**

Provide Grand Alfresco option.  
Provide ACSD 2124-26 External  
Corner Sliding door to Family/Meals,  
2 x 470x830 brick piers.  
Minimum site area 344m<sup>2</sup> to meet  
60% building coverage requirements.



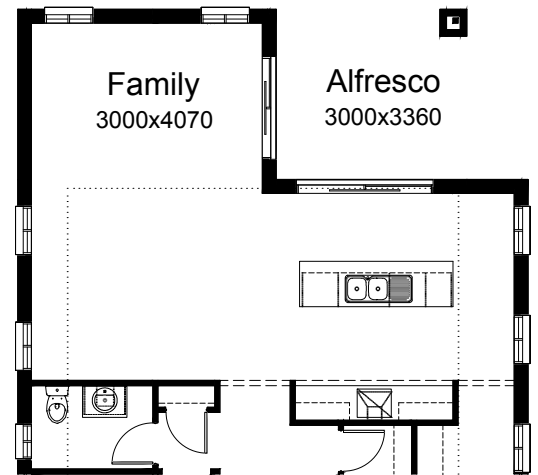
**OPTION LD1**

Provide Laundry upgrade including  
laminated inset trough,  
1no. 800mm base cupboard,  
1no. 400mm base cupboard,  
1no. 800mm overhead cupboard,  
1no. 400mm overhead cupboard  
with additional tiled splash back  
and benchtop to suit.



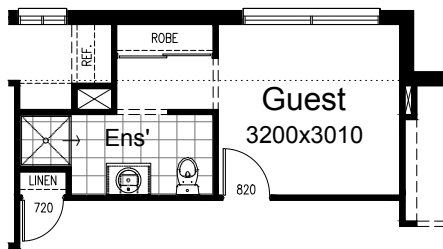
**OPTION EP2**

Alfresco flip Option.



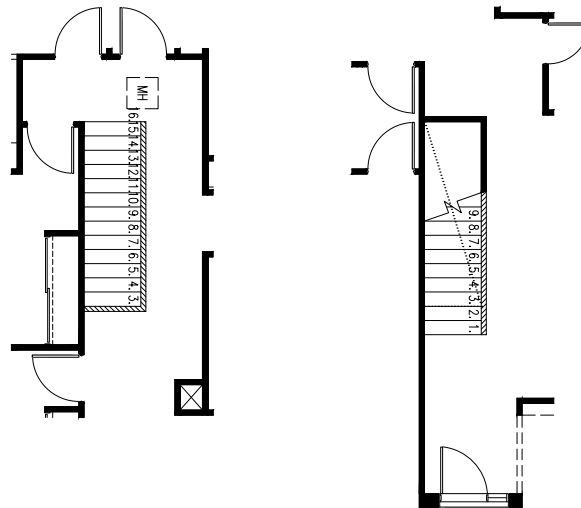
**OPTION IP1**

Provide Guest bedroom, Ensuite and Robe Option  
in lieu of standard Lounge and WIL. Provide additional  
1no. 820mm flush panel hinged door,  
1no. 900mm x 900mm tiled in shower base,  
1no. toilet, 1no. 782mm wide vanity unit,  
hanging rail/shelf to Robe and  
1no. 514mm x 2410mm aluminium sliding window  
in lieu of standard to Guest.



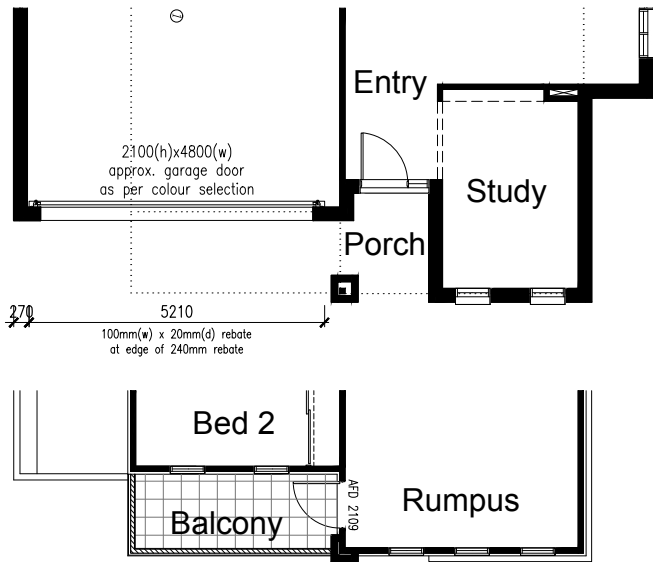
**OPTION IP2**

Provide Option to mirror staircase  
and enter the staircase from  
opposite direction at entry.



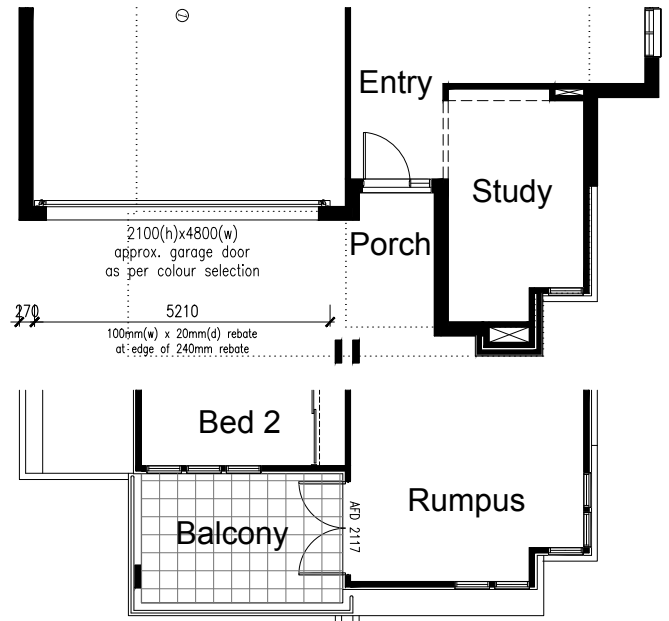
**OPTION EP3**

Provide Balcony option.  
Provide AFD 2109 external door, ceramic tiled floor, timber framed wall balustrade with painted Scyon Stria cladding with 89x19 Axent trim over as handrail and painted Scyon Stria to internal lining.  
(COVENTRY FACADE)



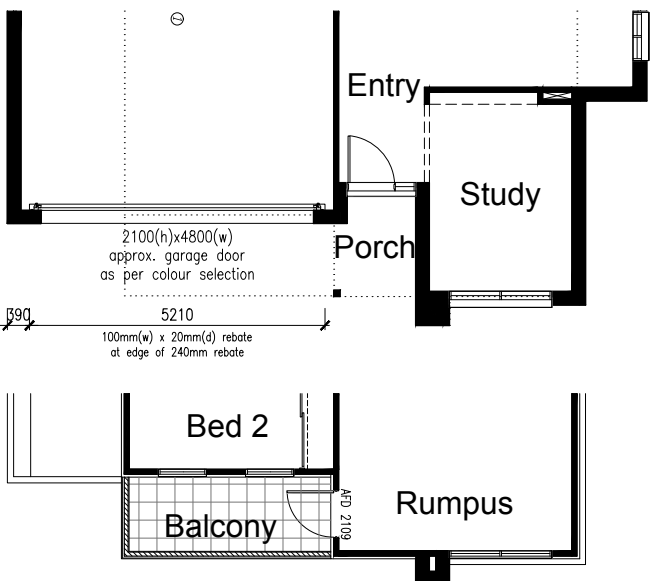
**OPTION EP5**

Provide Balcony option.  
Provide AFD 2117 external door, ceramic tiled floor, stainless steel handrail, timber framed wall balustrade with rendered Harditex cladding, 400x110 post and rendered Harditex cladding to internal lining.  
(HALIFAX FACADE)



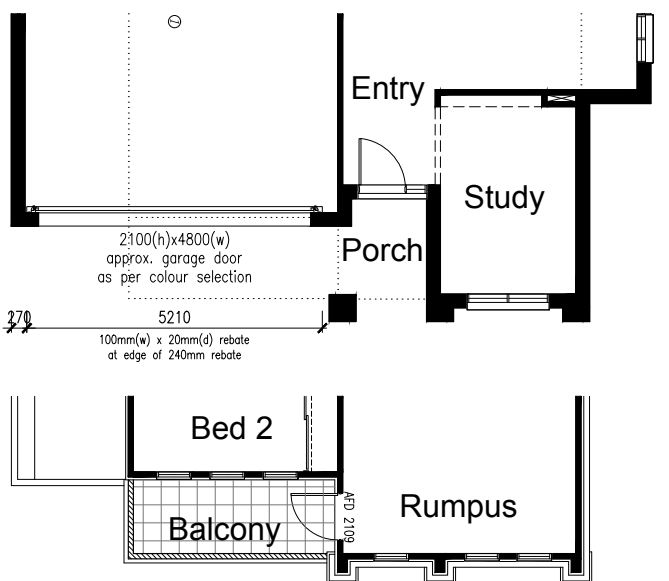
**OPTION EP4**

Provide Balcony option.  
Provide AFD 2109 external door, ceramic tiled floor, timber framed wall balustrade with painted Scyon Linea, 89x19 Axent trim over as handrail, rendered Harditex cladding to internal lining and 112x112 painted timber post.  
(YORKE FACADE)



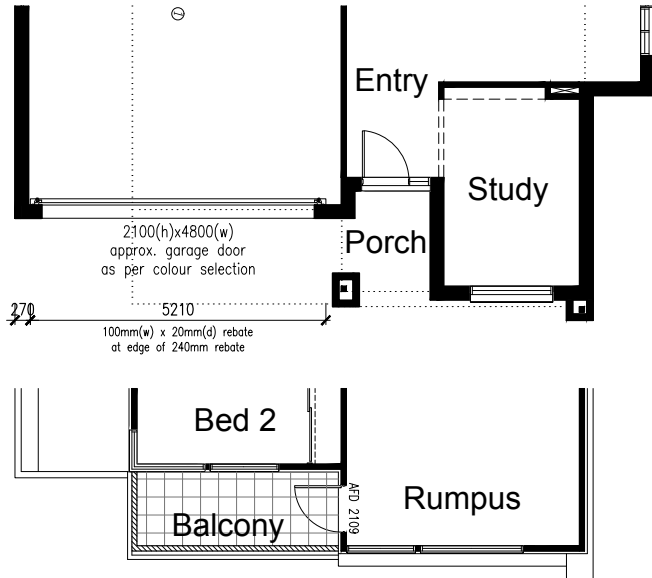
**OPTION EP6**

Provide Balcony option.  
Provide AFD 2109 external door, ceramic tiled floor, timber framed wall balustrade with rendered EPS cladding, rendered Harditex cladding to internal lining and moulding type 2 as handrail.  
(CAMBRIDGE FACADE)



**OPTION EP7**

Provide Balcony option.  
Provide AFD 2109 external door, ceramic tiled floor,  
1 No. AFW 1012 aluminium fixed window to Rumpus,  
timber framed wall balustrade with rendered EPS cladding  
and rendered Harditex cladding to internal lining.  
(WESTMINSTER FACADE)



**OPTION EP8**

Provide Balcony option.  
Provide AFD 2109 external door, ceramic tiled floor,  
with stainless steel posts and stainless steel  
horizontal rods as balustrades  
(OXFORD FACADE)

