

FLOORPLAN OPTIONS

We personalise our floorplans. Talk to us about our huge range of ready-to-go design options.

Facades available:

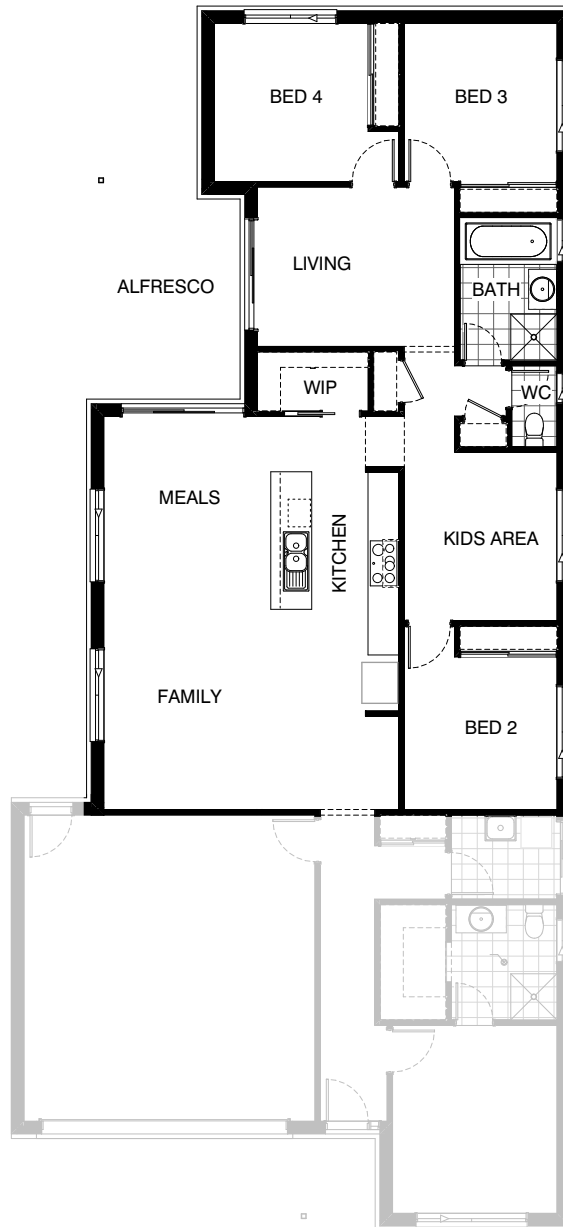
Coastal, Delta, Kingston, Nouveau
Salisbury, Traditional, York

Overall home width 10.91m

Overall home length 23.75m

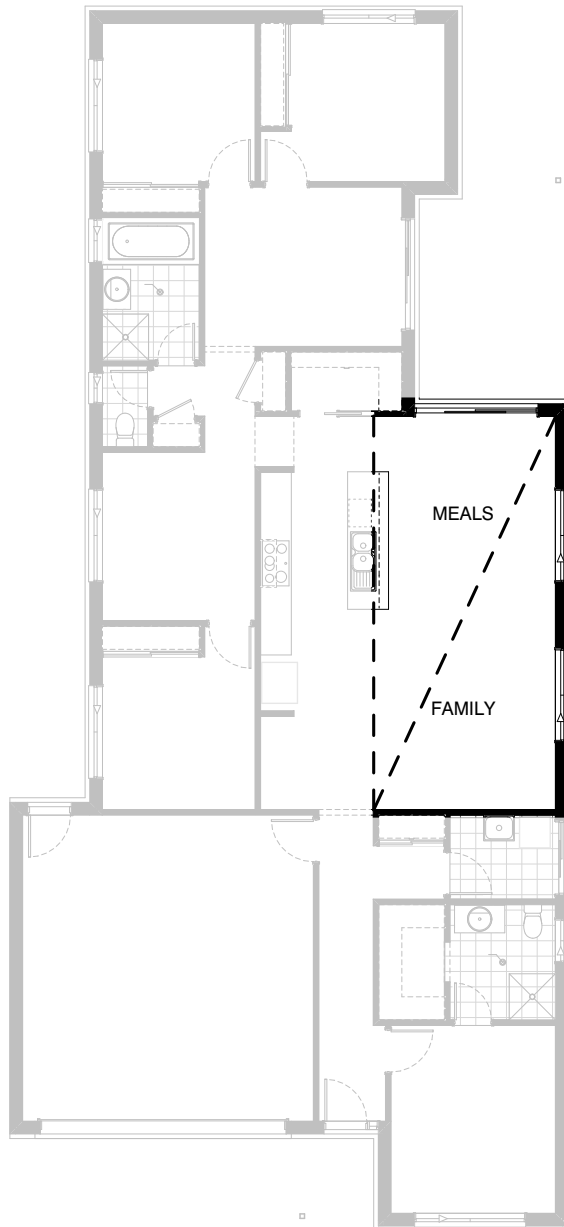
| | | |
|--------------|---------------------------|---------------|
| Residence | 164.6m ² | 17.7sq |
| Garage | 37.4m ² | 4.0sq |
| Porch | 3.0m ² | 0.3sq |
| Alfresco | 13.3m ² | 1.4sq |
| Total | 218.3m² | 23.5sq |

Listed details based on Traditional facade floorplan (illustrated)



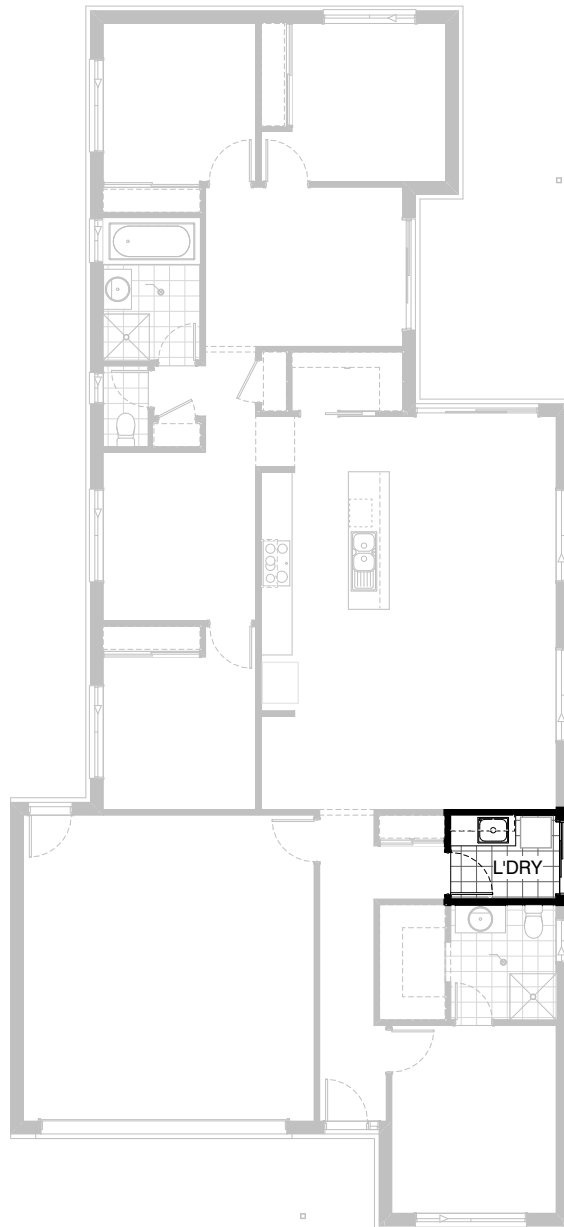
Option External01

Provide mirrored rear section of the home.
All rooms remain standard except the
Study Nook becomes an Alcove.



Option Internal01

Provide option with raked ceiling to Meals and Family area with standard ceiling and bulkhead over kitchen.



Option Laundry01

Provide Laundry upgrade with laminate cupboards
and stainless steel inset trough including
1No. 800mm base cupboard,
1No. 400mm base cupboard,