

## Facades available:

Coastal, Delta, Kingston, Nouveau  
Salisbury, Traditional, York

**Overall home width** **11.24m**

**Overall home length** **21.23m**

Residence 153.2m<sup>2</sup> 16.5sq

Garage 37.4m<sup>2</sup> 4.0sq

Porch 3.7m<sup>2</sup> 0.4sq

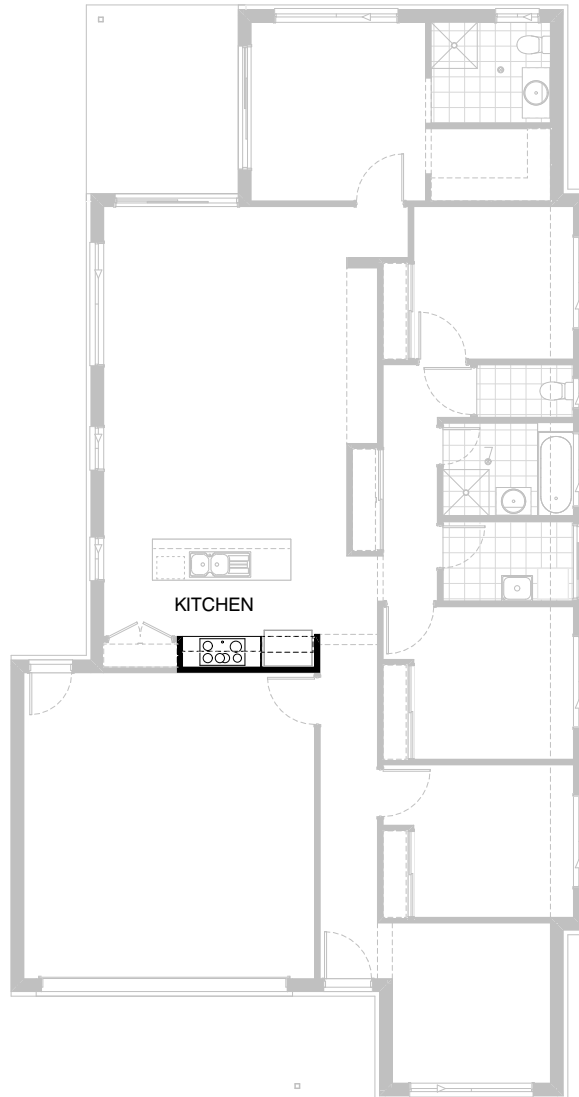
Alfresco 10.4m<sup>2</sup> 1.1sq

**Total** **204.6m<sup>2</sup>** **22.0sq**

## FLOORPLAN OPTIONS

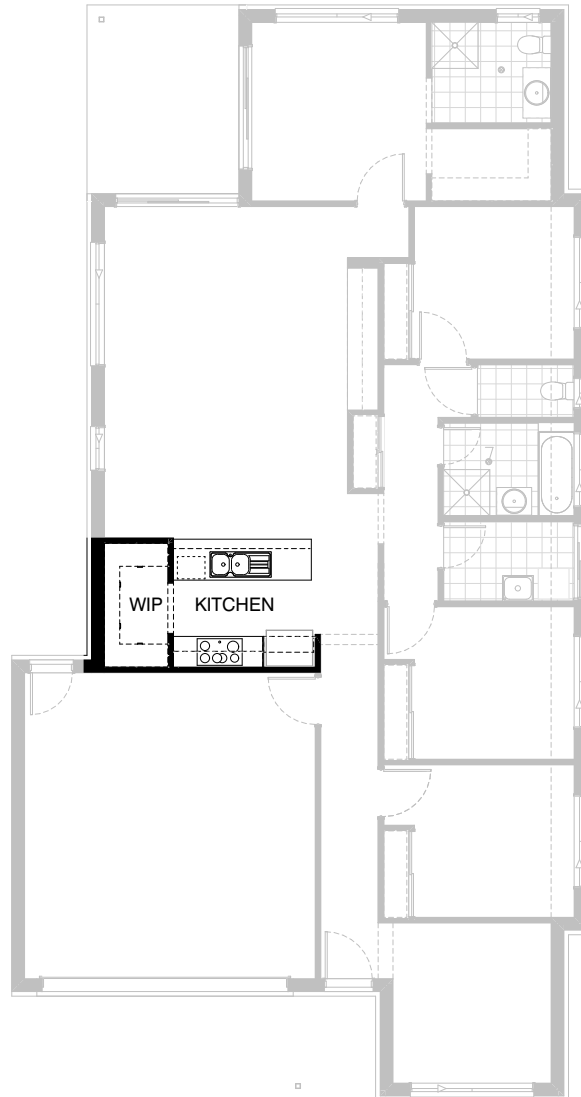
We personalise our floorplans. Talk to us about our huge range of ready-to-go design options.

Listed details based on Traditional facade floorplan (illustrated)



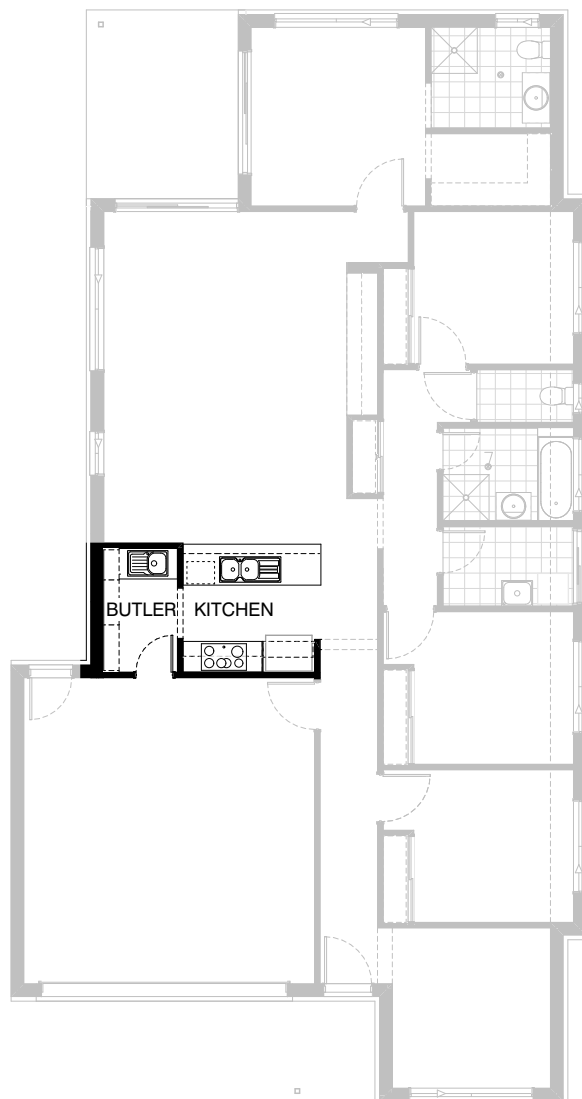
## Option Kitchen01

Provide Kitchen upgrade with  
2No 300mm overhead cupboards and  
1No. 900mm open shelf above Ref space.



## Option Kitchen02

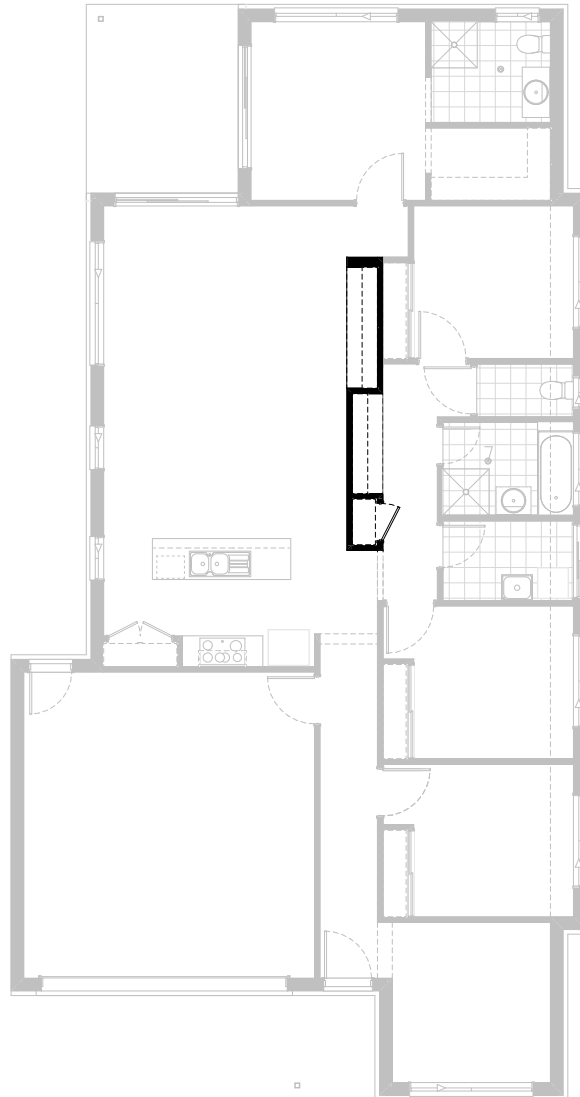
Provide Kitchen and WIP with  
2No 400mm overhead cupboards and  
1No. 976mm open shelf above Ref space.  
Relocate Kitchen Island bench  
WIP: 2No. 1650mm (h) laminated shelvings.



### Option Kitchen03

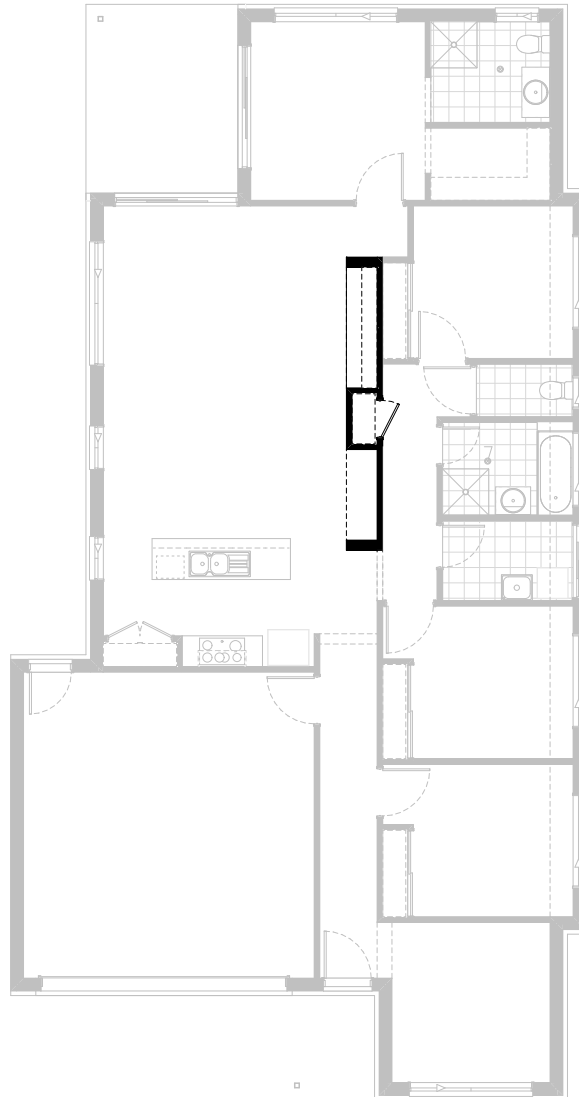
Provide Kitchen and Butler's Pantry with  
2No 300mm overhead cupboards and  
1No. 976mm open shelf above Ref space.  
Island bench to remain standard & relocate  
to accommodate Butler's Pantry.

Butler's Pantry:  
1No. 350mm base cupboards,  
1No. 700mm base cupboard, single bowl sink,  
additional benchtop and tiled splashback to suit  
1800mm(h). Laminated shelving to 1No. Butler  
elevation.  
720mm hinged door to Butler's Pantry/Garage  
standard internal Garage access door.



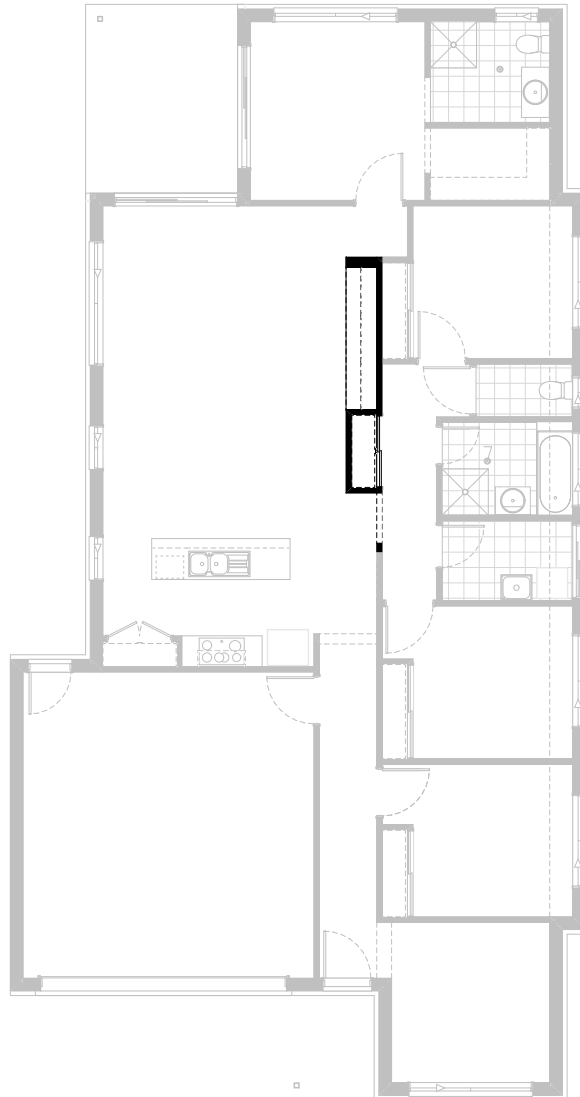
## Option Internal01

Provide study nook opening into internal Passage.  
Provide built-in joinery to Study nook, including:  
2No. laminate open shelves to length of Study nook,  
32mm laminate desktop to length of Study nook.  
Relocate Passage opening to suit.  
Provide shortened Linen cupboard with  
4No. shelves and 720mm wide hinge door.  
Shorten Entertainment nook to suit.  
Provide 2No. 60mm thick x 300mm laminate shelves to  
full length of Entertainment nook.  
Provide 2No. 800mm wide and 1No. 700mm wide  
hinged-door Entertainment cabinets with  
laminate benchtop to full length of Entertainment nook.



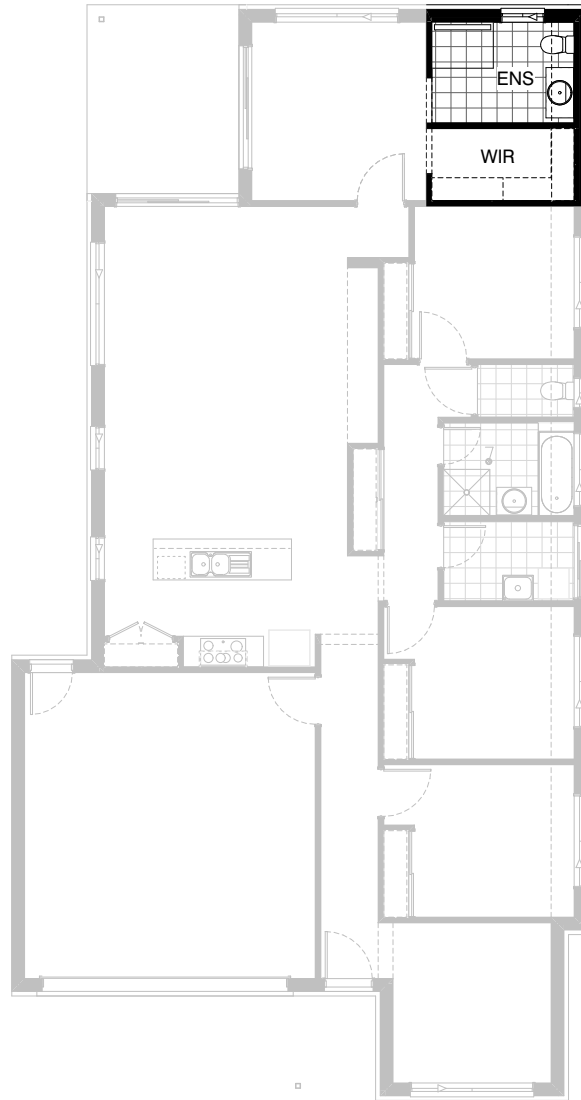
## Option Internal02

Provide Study nook opening into Family/Meals room,  
to previous Entertainment nook location.  
Provide built-in joinery to Study nook,  
including:  
2No. laminate open shelves to length of Study nook,  
32mm laminate desktop to length of Study nook.  
Relocate Passage opening to suit.  
Provide shortened Linen cupboard with 4No. shelves  
720mm wide hinge door.  
Relocate opening to rear Passage to suit.



### Option Internal03

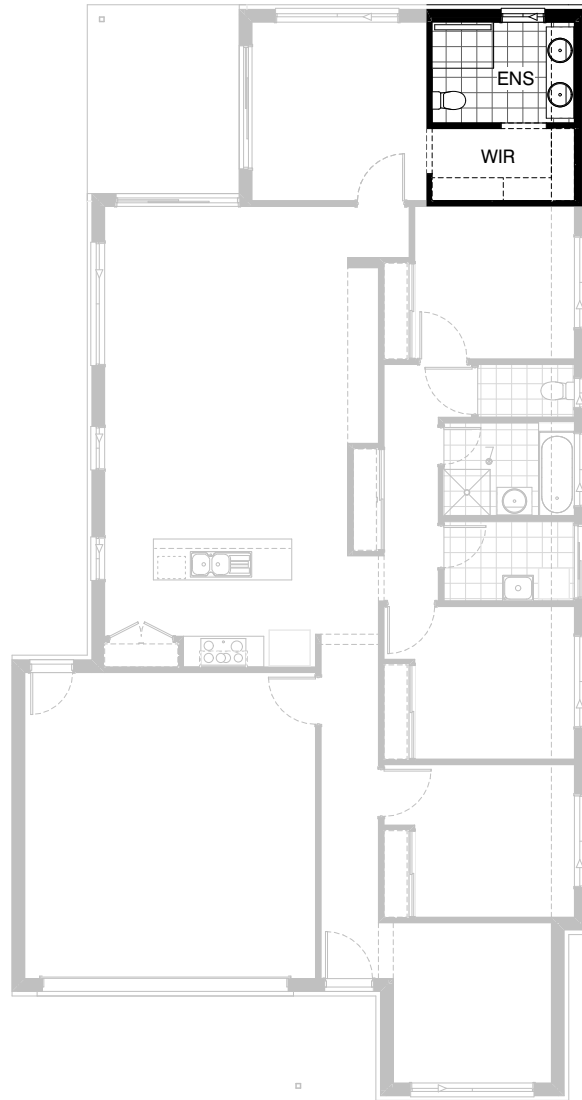
Relocate Linen cupboard as shown and reduced by 570mm.  
Relocate Passage opening to suit.  
Provide reduced Entertainment nook including:  
3No. 900mm wide hinged-door Entertainment cabinets with laminate benchtop to Entertainment nook.  
Provide 3No. 900mm wide sets of overhead laminate hinged-door cupboards underneath bulkhead to Entertainment nook.



## Option Ensuite01

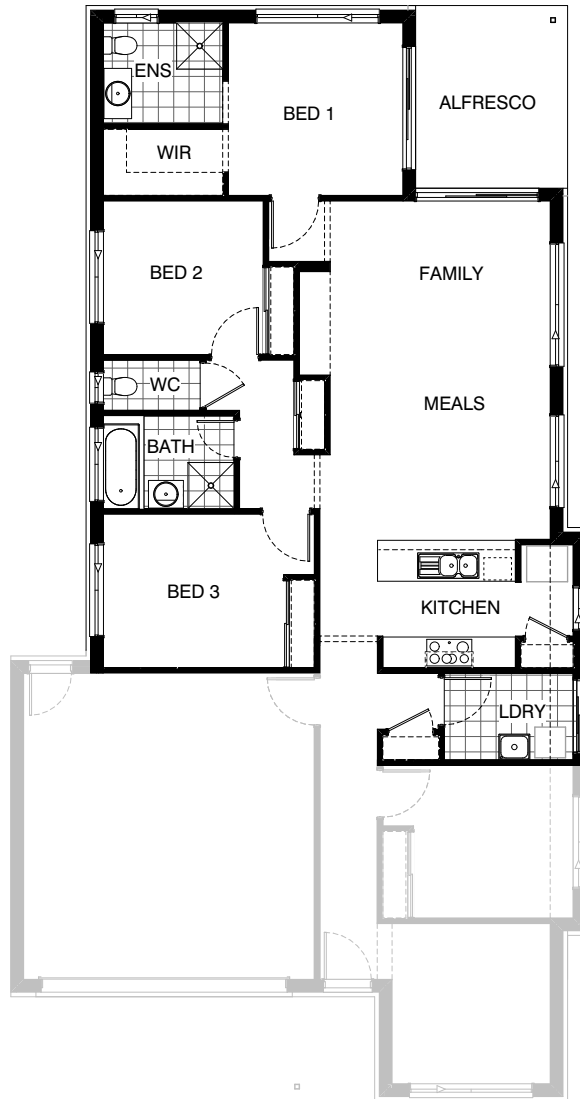
Provide Ensuite upgrade option including  
3600mm x 450mm extension,  
(to be under eave line to side elevation),  
increases area by 1.6m<sup>2</sup>.  
relocation of window to suit,  
extension to 300mm deep bulkhead,  
1200mm x 900mm tiled shower base with grate,  
900mm wide wall opening.





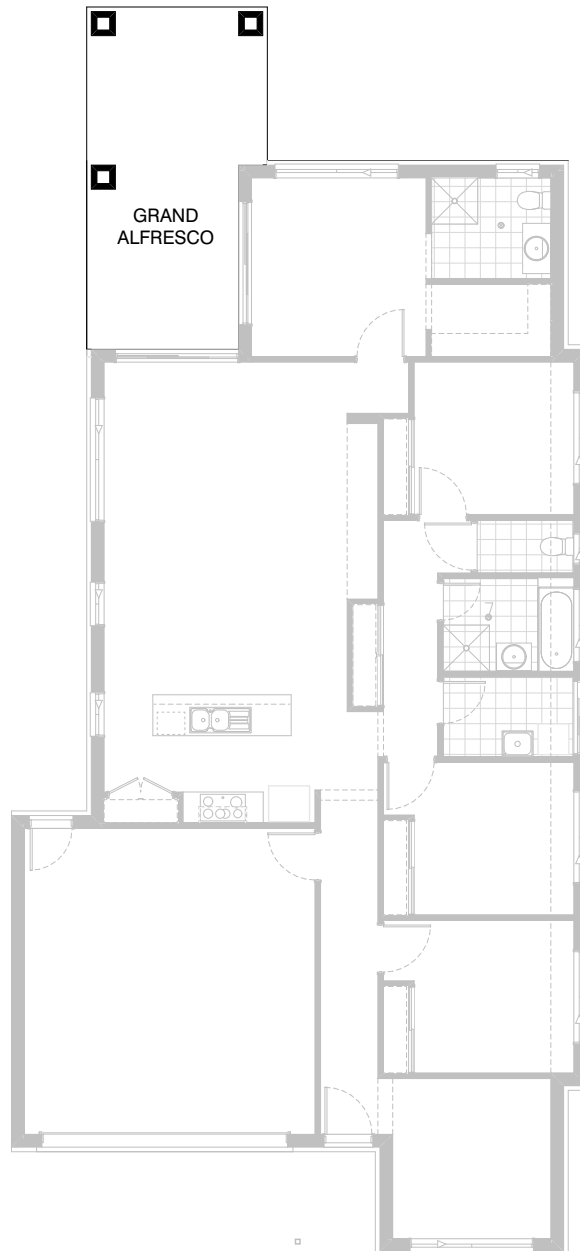
## Option Ensuite02

Provide Ensuite upgrade option including  
3600mm x 450mm extension to floor area  
(to be under eave line to side elevation),  
increases area by 1.6m<sup>2</sup>.  
relocation of window to suit,  
extension to 300mm deep bulkhead,  
1200mm x 900mm tiled shower base with grate,  
relocate 900mm wide wall opening to Ens/WIR wall,  
relocate WC to previous opening location &  
provide 1782mm long double vanity cabinet.



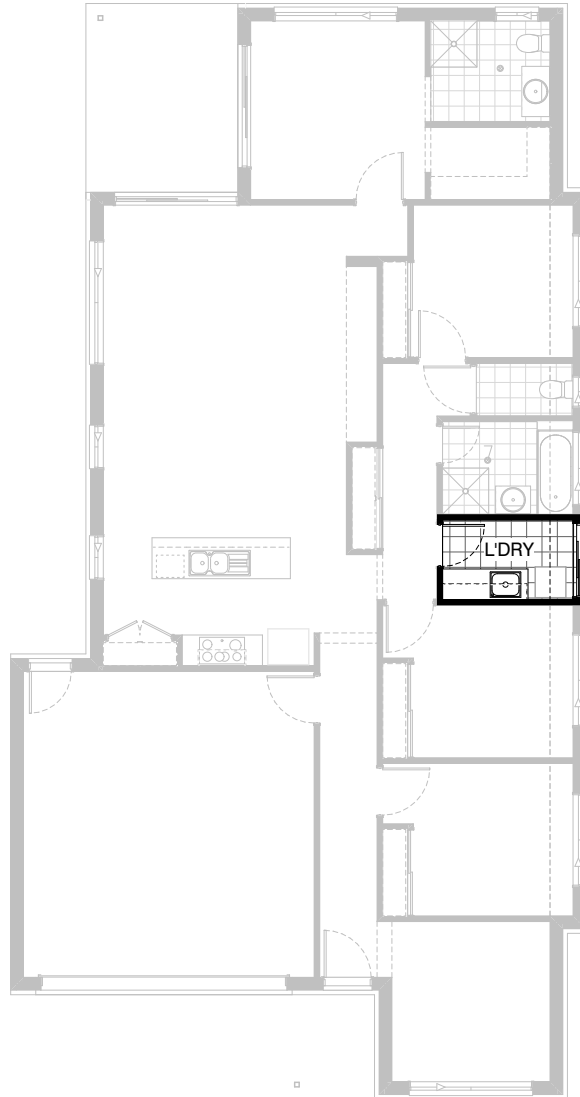
## Option External01

Provide flipped rear section of the home with updated windows and doors as shown.  
New galley-style kitchen includes:  
900mm under bench oven,  
900mm retractable rangehood,  
dishwasher provision,  
microwave provision with pot drawer beneath,  
1No. double bowl sink,  
1No. 450mm drawer unit,  
1No. 900mm base cupboard,  
2No. 800mm base cupboards,  
plaster-lined Pantry with 820mm hinged door,  
relocated Ref space.



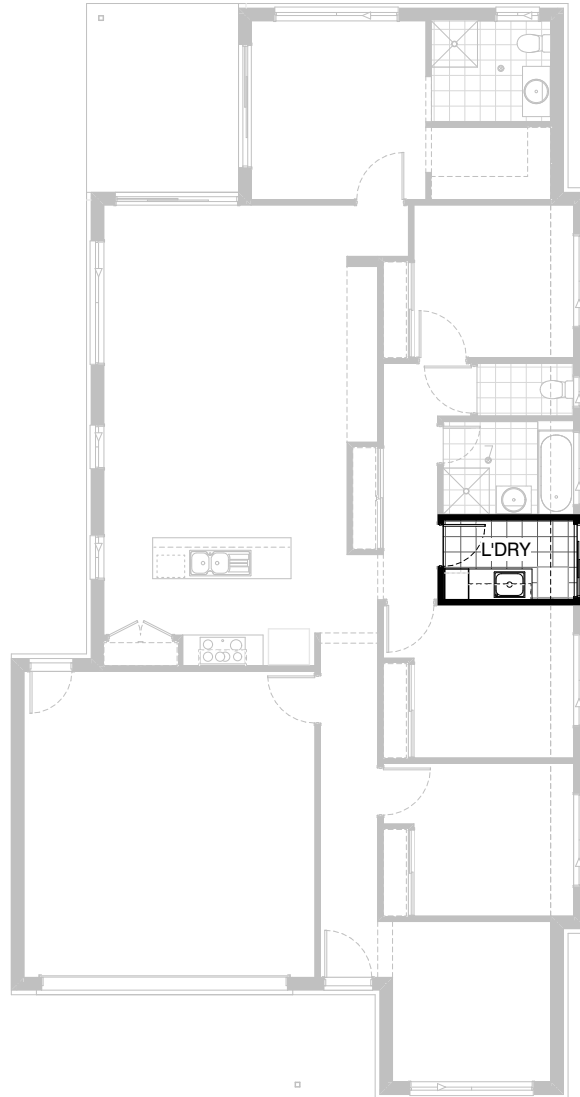
## Option External02

Provide Grand Alfresco option in lieu of standard Alfresco, including tiled roof over and additional 3No. 470mm x 470mm brick piers.  
Adds 3000mm of length to the building footprint.  
(Total 10.05sq.m. of building area)



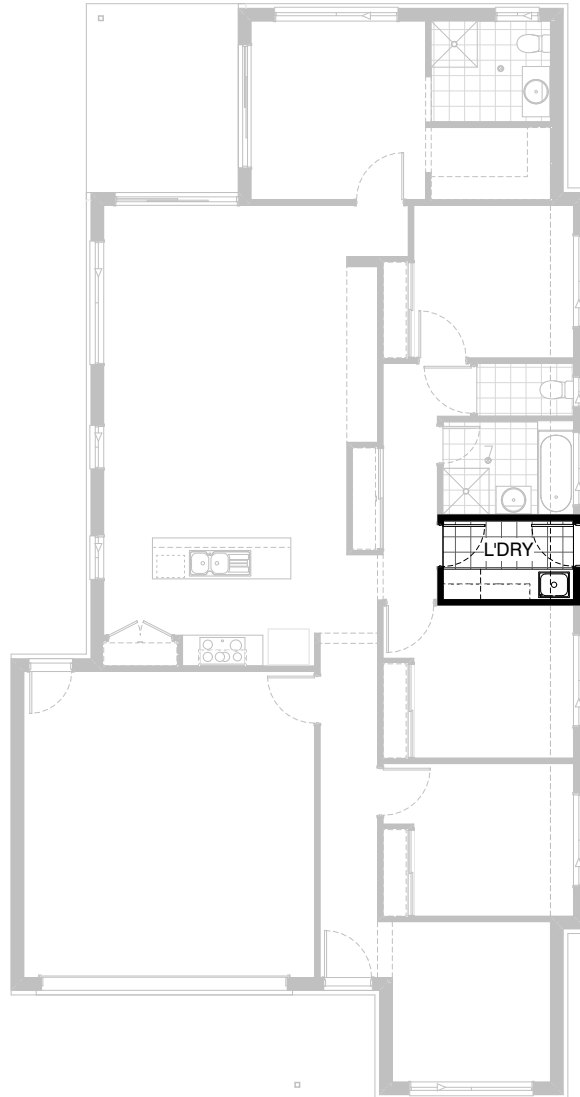
## Option Laundry01

Provide Laundry upgrade including laminate base and overhead cupboards and stainless steel inset trough, including:  
2No. 800mm base cupboards,  
2No. 800mm overhead cupboards and additional laminate benchtop and tiled splashback to suit.



## Option Laundry02

Provide Laundry upgrade including laminate base and overhead cupboards and stainless steel inset trough, including  
1No. 800mm base cupboard,  
1No. 400mm base cupboard,  
1No. 800mm overhead cupboard,  
1No. 400mm overhead cupboard,  
1No. 450mm full height laminate broom cupboard,  
additional laminate benchtop and tiled splashback to suit.



### Option Laundry03

Provide Laundry upgrade including laminate base and overhead cupboards and stainless steel inset trough including  
1No. 700mm base cupboard,  
1No. 350mm base cupboard,  
Additional laminate benchtop and tiled splashback to suit (includes 1400mm space under bench for WM and dryer).  
2No. 600mm overhead cupboards,  
1No. 450mm overhead cupboard,  
1No. 60mm laminate shelf  
Provide AED2109 access door in lieu of standard ASD2115 sliding door.