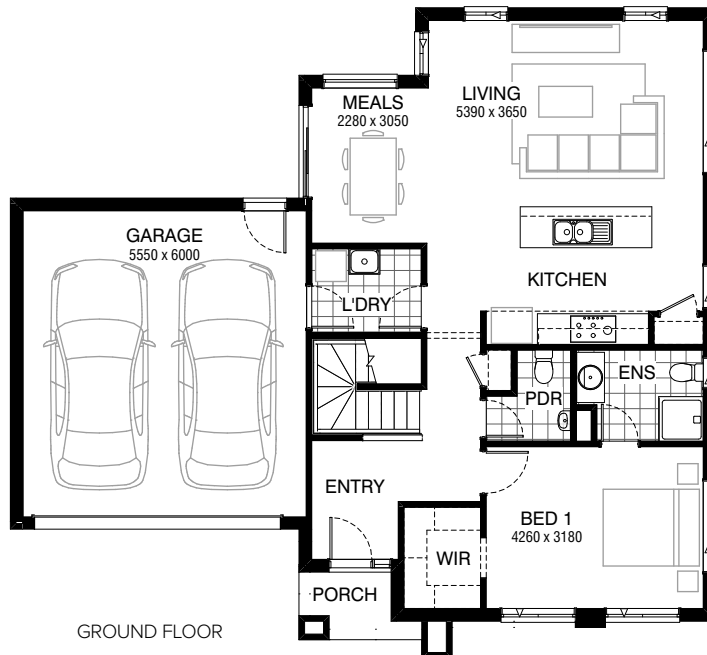
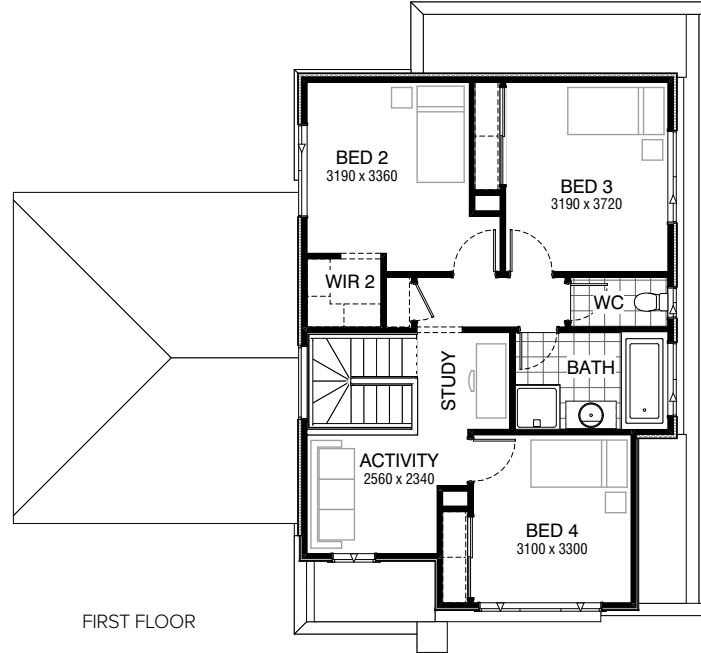


Total squares **21.8sq**

 **4**  **2.5**  **2**



FLOORPLAN OPTIONS

All available ready-to-go floorplan options for this design can be viewed on the following pages, or visit www.burbank.com.au.

Facades available:

Condor, Matisse, Monet

Overall home width 13.79m

Overall home length 12.71m

Residence 162.7m² 17.5sq

Garage 37.5m² 4.0sq

Porch 2.6m² 0.3sq




Total 202.6m² 21.8sq

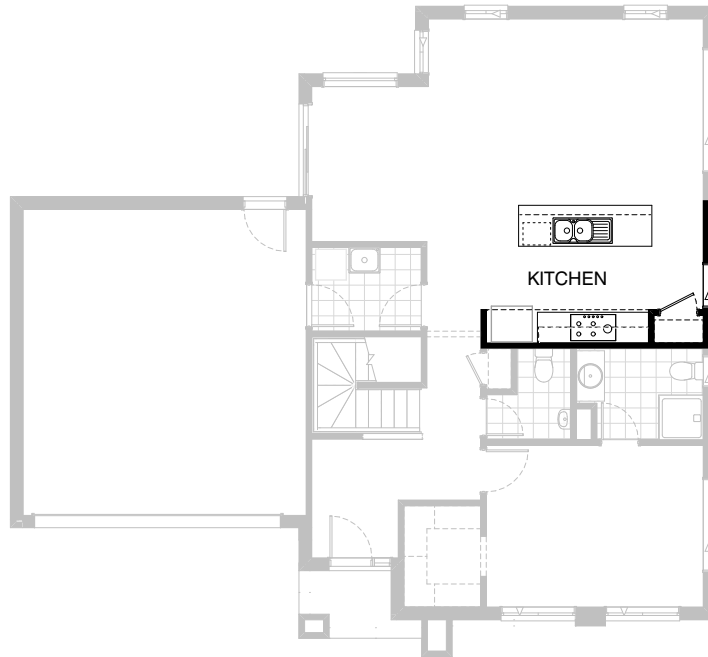
Listed details based on Condor façade floorplan (illustrated)

*Copyright conditions. All photos and illustrations are representative only. Floor plans and specifications may be varied by Burbank without notice, the dimensions are diagrammatic only and a Building Contract with final drawings will display correct dimensions and detail. All designs are the property of Burbank and must not be used, reproduced, copied or varied, wholly or in part without written permission from an authorised Burbank representative. Copyright Burbank Australia Pty Ltd. ABN 91 007 099 872. Builders Registration Number CDB-U-52603.

Call 13 BURBANK
Visit burbank.com.au

FLOORPLAN OPTIONS




 **4**  **2.5**  **2**

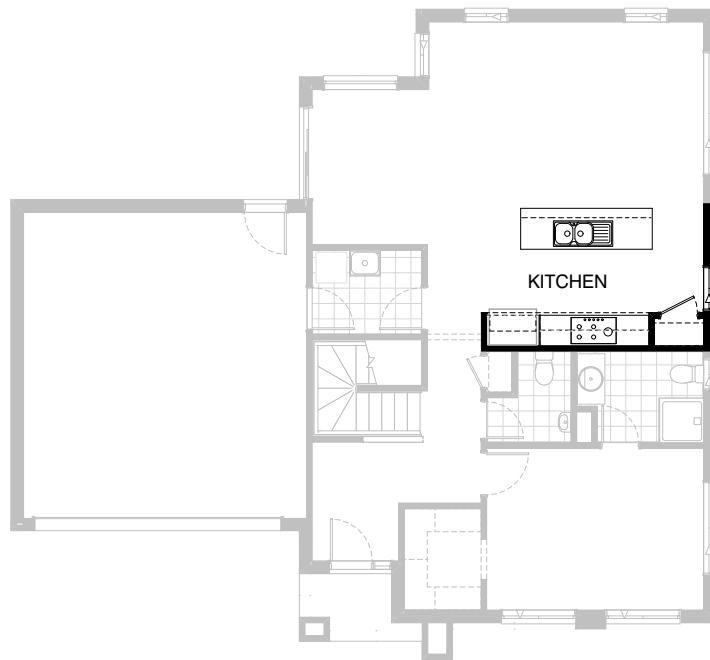


Option K-1

Provide Kitchen Upgrade with additional
1no. MW. provision with pot drawer below
in lieu of standard 1no. 600mm base cabinet.

FLOORPLAN OPTIONS

 **4**  **2.5**  **2**

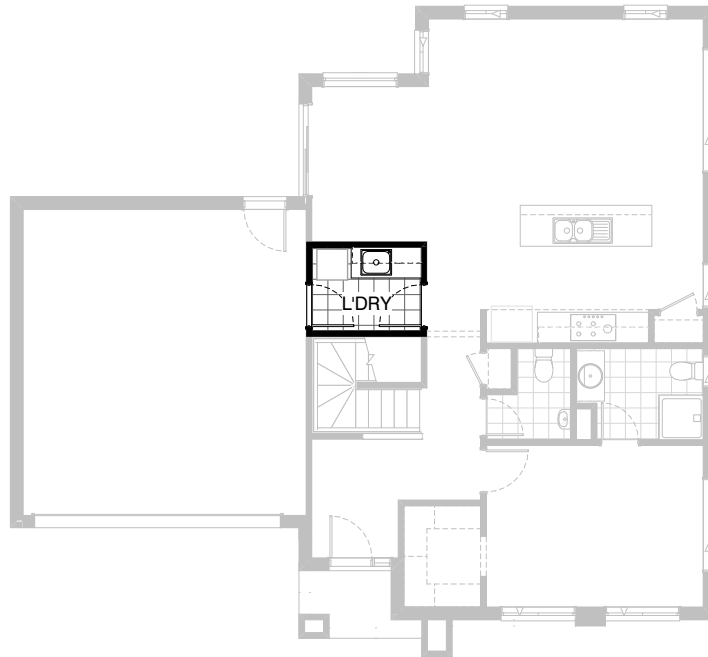


Option K-2

Provide Kitchen Upgrade with 1no. laminated open shelf to refrigerator space.

FLOORPLAN OPTIONS




 **4**  **2.5**  **2**

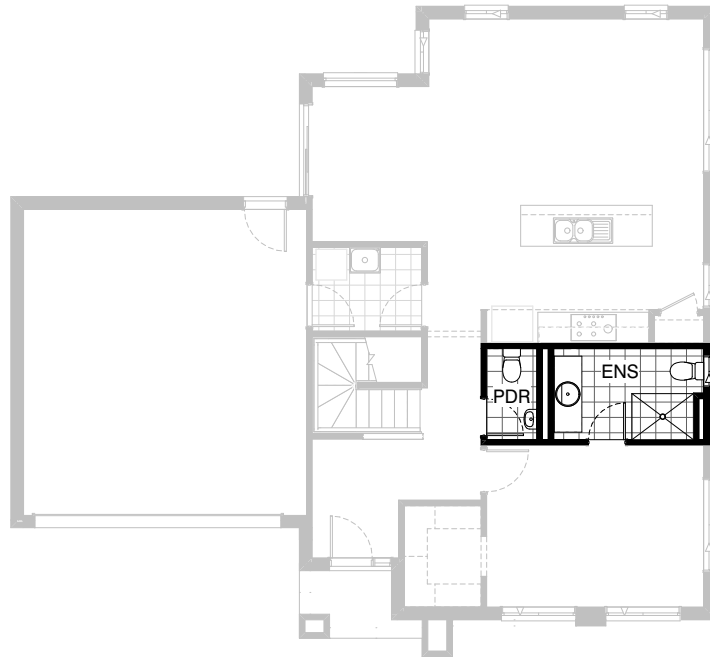


Option LD-1

Provide Laundry Option with s.s. inset trough
in 32mm laminated bench top.
1no. 400mm and 1no. 900mm base cabinets and
1no. 400mm and 1no. 900mm overhead cabinets
and additional tiled splashback and bench top to suit.

FLOORPLAN OPTIONS




 **4**  **2.5**  **2**

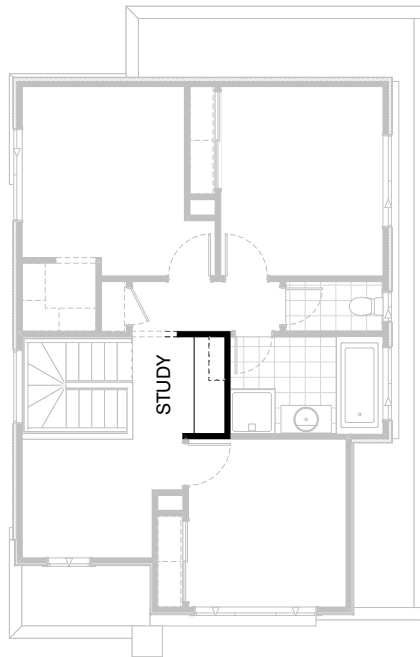


Option ENS-1 GF

Provide Ensuite Upgrade with additional 1no.
1200mm x 900mm tiled shower base in lieu of standard.
Relocate plumbing stack rear of vanity unit & provide
1no. 1482mm vanity unit in lieu of standard.
Relocate Powder and delete Linen to suit.

FLOORPLAN OPTIONS




 **4**  **2.5**  **2**

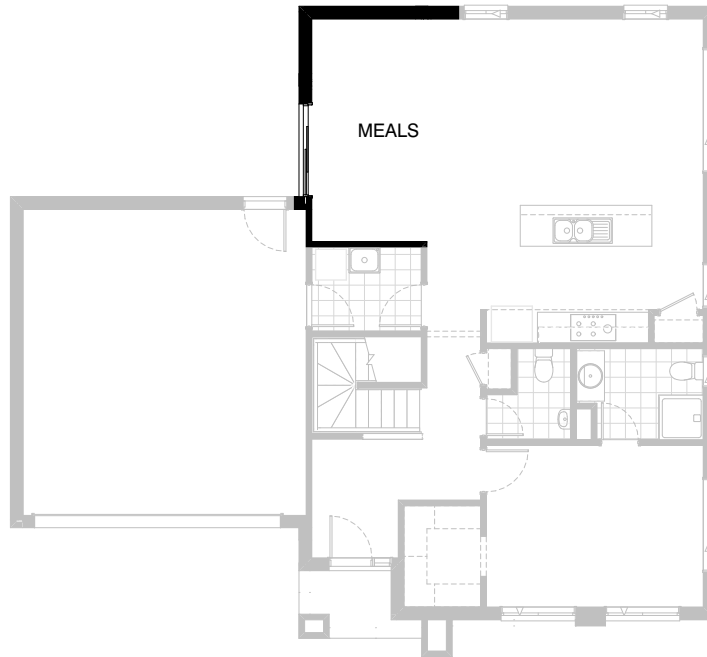


Option IP1-1 FF

Provide 1no. 450mm base cabinet and
1no. 800mm overhead cabinet to
Study Alcove with 600mm deep bench.

FLOORPLAN OPTIONS

 **4**  **2.5**  **2**






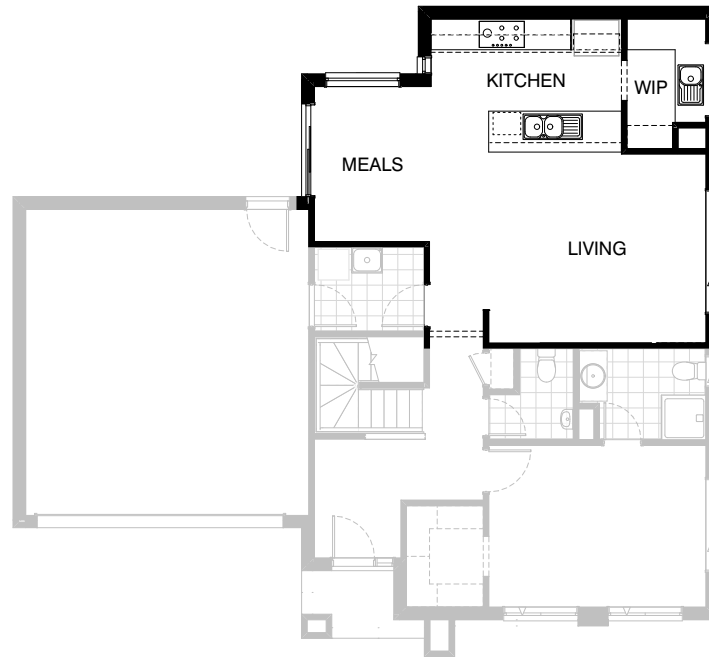
Option IP1-2 GF

Extend Meals length by 1320mm and delete
1no. 1800mm x 850mm aluminium sliding
window and 1no. 1800mm x 1450mm
aluminium sliding window to suit.

NOTE:- Increase House area by 3.01m²

FLOORPLAN OPTIONS

 **4**  **2.5**  **2**



Option IP1-3 GF

Provide rear Floor Plan layout change with relocation of Kitchen / Living. Provide additional site built plaster lined W.I.P with additional 1no. 1200mm x 1450mm aluminium fixed window.
Provide 3no. 300mm and 1no. 800mm base cabinets, 1no. 1050mm blind carcass with 1no. 600mm door, 2no. 700mm overhead cabinets, 4no. 450mm deep shelves and 1no. 800mm wide opening with plaster bulkhead over.
Provide Kitchen Upgrade with additional 1no. laminated open shelf above refrigerator space.
1no. 600mm and 1no. 800mm and 2no. 900mm base cabinets, 1no. 450mm drawer unit and 2no. 900mm overhead cabinets.
1no. 900mm under bench oven with cooktop & 1no. 900mm overhead cupboard with retractable rangehood, 1no. laminated DW. provision.
Provide additional 1no. 2057mm x 330mm aluminium fixed window and additional tiled splashback and bench top to suit, also provide 1800mm x 2410mm aluminium sliding window to Living area.

NOTE:- Delete 4no. 1800mm x 850mm and 1no. 514mm x 2400mm aluminium sliding windows to suit.