

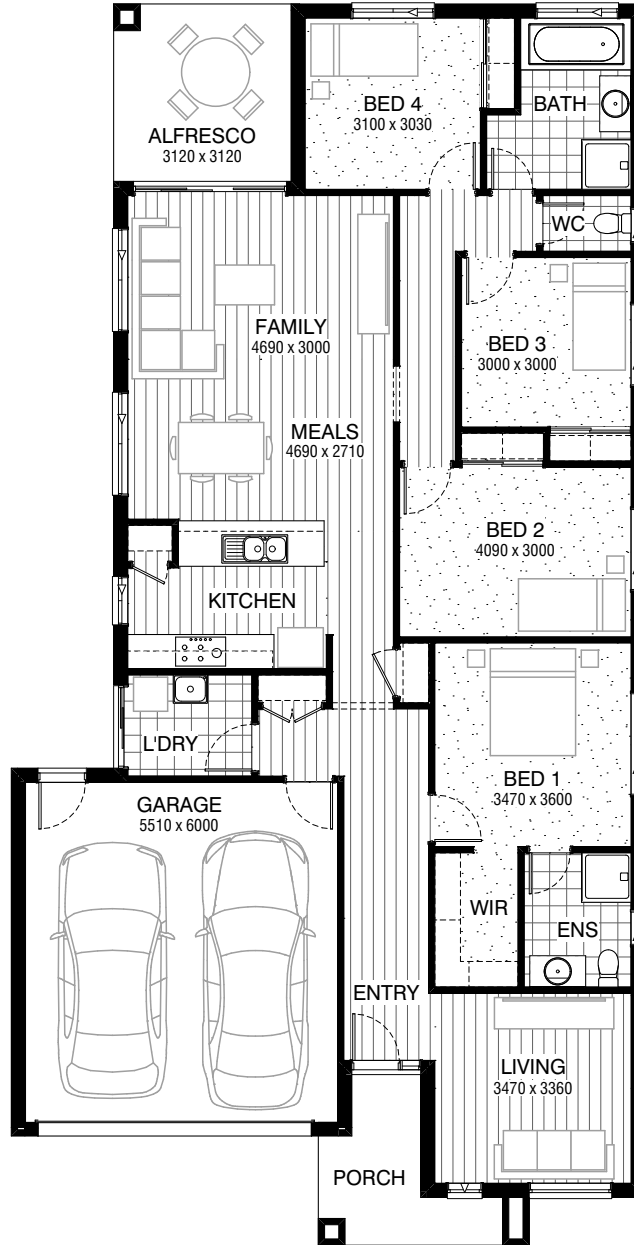


Total squares **22.3sq**

 **4**  **2**  **2**



FLOORPLAN OPTIONS

All available ready-to-go floorplan options for this design can be viewed on the following pages, or visit www.burbank.com.au.

Facades available:

Arkley, Drysdale, Haring

Overall home width 11.15m

Overall home length 21.83m




| | | |
|--------------|---------------------------|---------------|
| Residence | 154.5m ² | 16.6sq |
| Garage | 36.5m ² | 3.9sq |
| Porch | 6.4m ² | 0.7sq |
| Alfresco | 9.7m ² | 1.0sq |
| Total | 207.1m² | 22.3sq |

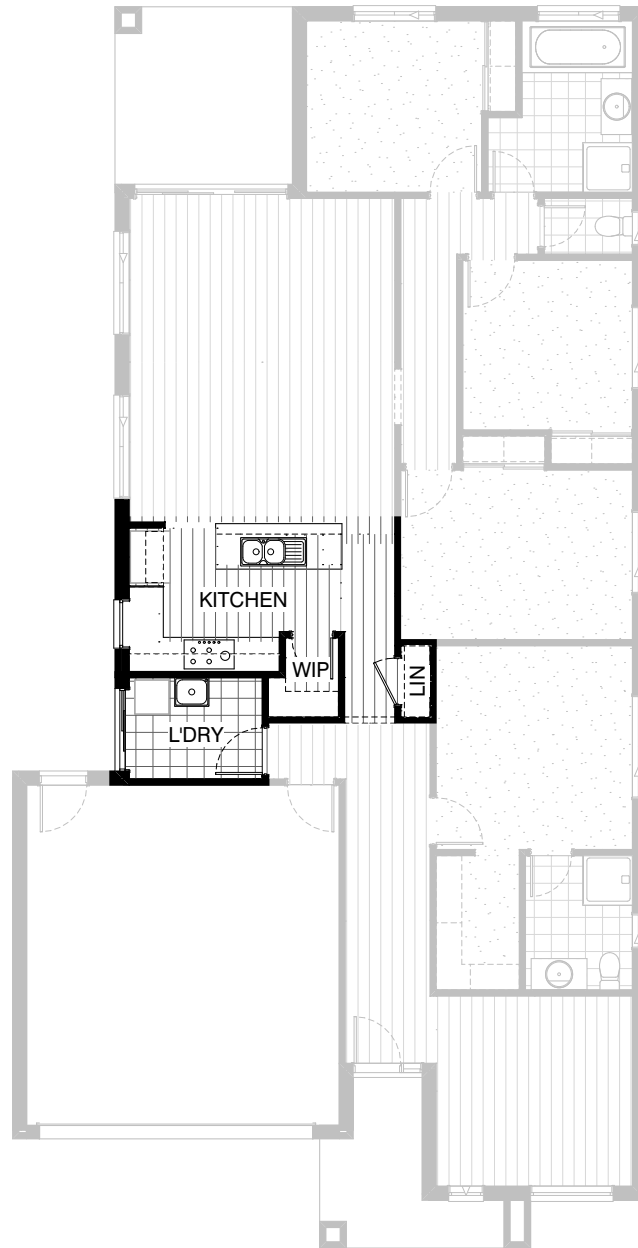
Listed details based on Drysdale facade floorplan (illustrated)

*Copyright conditions. All photos and illustrations are representative only. Floor plans and specifications may be varied by Burbank without notice, the dimensions are diagrammatic only and a Building Contract with final drawings will display correct dimensions and detail. All designs are the property of Burbank and must not be used, reproduced, copied or varied, wholly or in part without written permission from an authorised Burbank representative. Copyright Burbank Australia Pty Ltd. ABN 91 007 099 872. Builders Registration Number CDB-U-52603.

Call 13 BURBANK
Visit burbank.com.au

FLOORPLAN OPTIONS

 **4**  **2**  **2**



**KITCHEN OPTION
STANDARD COLOUR BOARD**

Provide Kitchen and W.I.P Option by increasing Laundry width by 160mm, delete Linen cupboard, 2no. 520mm flush panel hinged doors and 4no. shelves, reduce Laundry passage by 200mm and provide site build plaster lined W.I.P. with 4no. 300mm and 4no. 450mm deep shelves and 1no. 720mm flush panel hinged door. Decrease Kitchen opening / bulkhead width by 190mm to 900mm in lieu of standard 1090mm.

Provide 1no. 300mm and 2no. 400mm and 1no. 800mm base cabinet, 1no. 450mm drawer unit, 1no. 800mm blind carcass with 1no. 350mm door, 1no. 700mm and 1no. 900mm overhead cabinets, 1no. laminated DW. provision, 1no. laminated open shelf above refrigerator space, 1no. 900mm underbench oven with 900mm gas cooktop & retractable rangehood above and 1no. 1200mm x 850mm aluminium fixed window with additional tiled splashback and bench top to suit.

Convert Broom cupboard into Linen cupboard, increase width by 200mm in line with W.I.P wall, add 2no. shelves and provide 720mm hinged door i.l.o. 620mm door

Option contains standard specification

*Copyright conditions. All photos and illustrations are representative only. Floor plans and specifications may be varied by Burbank without notice, the dimensions are diagrammatic only and a Building Contract with final drawings will display correct dimensions and detail. All designs are the property of Burbank and must not be used, reproduced, copied or varied, wholly or in part without written permission from an authorised Burbank representative. Copyright Burbank Australia Pty Ltd. ABN 91 007 099 872. Builders Registration Number CDB-U-52603.

FLOORPLAN OPTIONS



4



2



2



KITCHEN OPTION UPGRADE COLOUR BOARD

Provide Kitchen and W.I.P Option by increasing Laundry width by 160mm, delete Linen cupboard, 2no. 520mm flush panel hinged doors and 4no. shelves, reduce Laundry passage by 200mm and provide site build plaster lined W.I.P. with 4no. 300mm and 4no. 450mm deep shelves and 1no. 720mm flush panel hinged door. Decrease Kitchen opening / bulkhead width by 190mm to 900mm in lieu of standard 1090mm.




Provide 1no. 300mm and 2no. 400mm and 1no. 800mm base cabinet, 1no. 450mm drawer unit, 1no. 800mm blind carcass with 1no. 350mm door, 1no. 700mm and 1no. 900mm overhead cabinets,

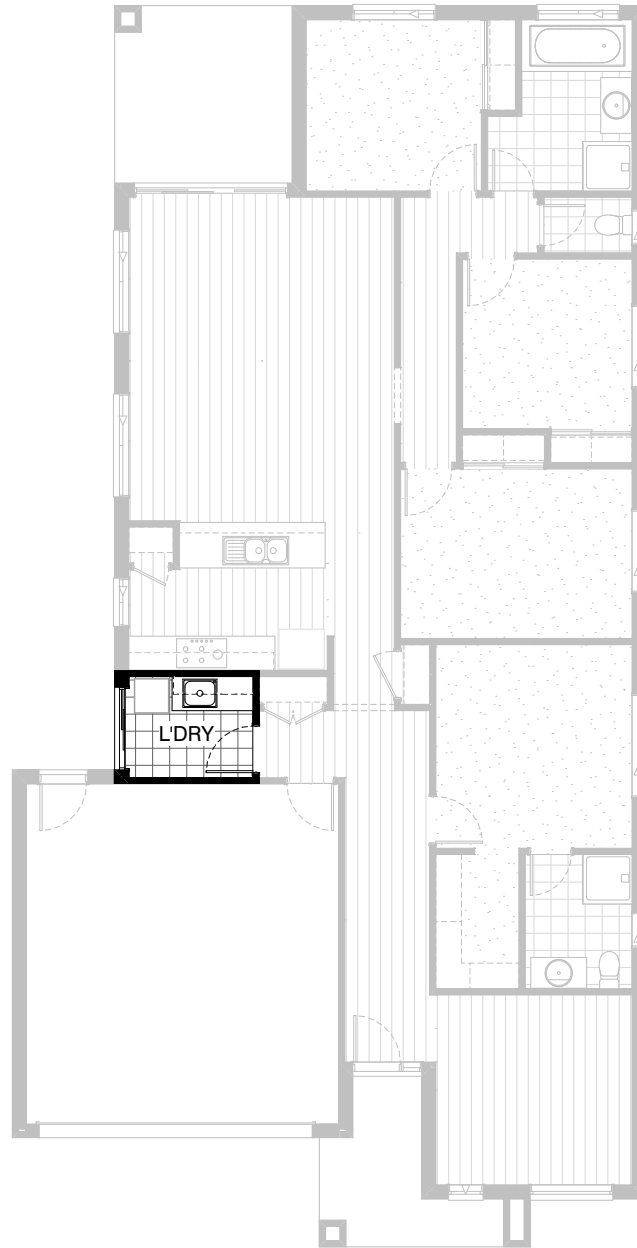
1no. laminated DW. provision, 1no. laminated open shelf above refrigerator space, 1no. 900mm underbench oven with 900mm gas cooktop & retractable rangehood above and 1no. 1200mm x 850mm aluminium fixed window with additional tiled splashback and bench top to suit.

Provide 20mm stone benchtop to Kiccthen, upgrade Kitchen sink and tapwear.

Convert Broom cupboard into Linen cupboard, increase width by 200mm in line with W.I.P wall, add 2no. shelves and provide 720mm hinged door i.l.o. 620mm door

FLOORPLAN OPTIONS




 **4**  **2**  **2**

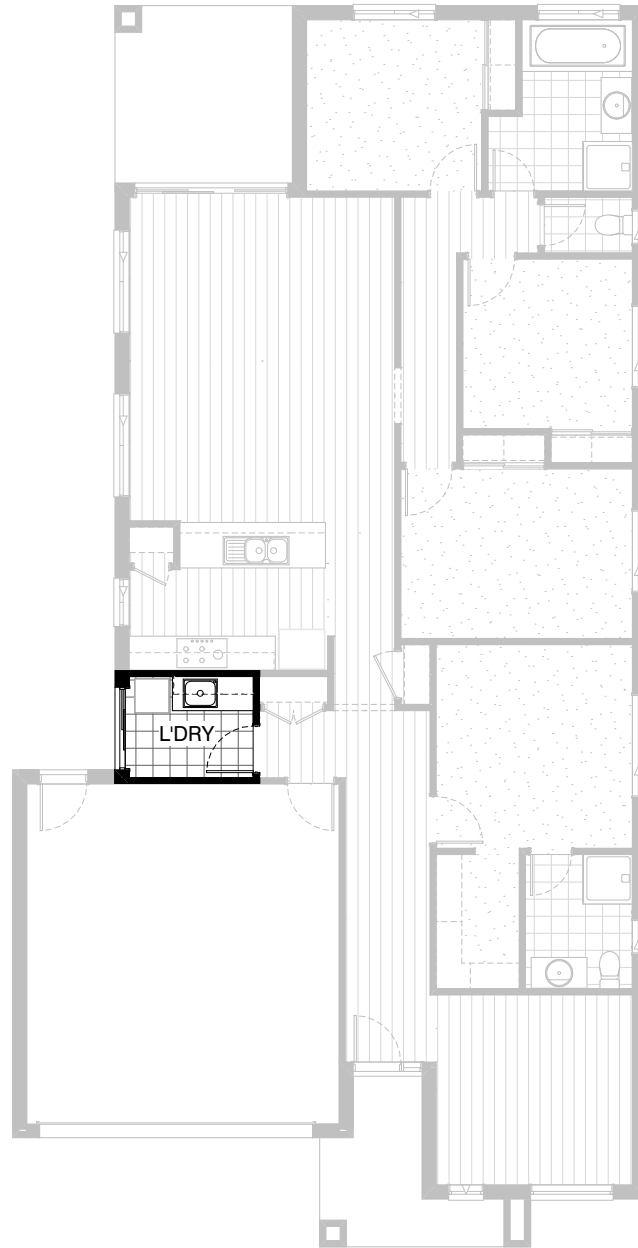


LAUNDRY OPTION
STANDARD COLOUR BOARD

Provide Laundry Upgrade with s.s. inset trough
in 32mm laminated bench top.
1no. 450mm and 1no. 900mm base cabinets,
1no. 450mm and 1no. 900mm overhead cabinets
and additional tiled splashback and bench top to suit.
Option contains standard specification

FLOORPLAN OPTIONS




 **4**  **2**  **2**



**LAUNDRY OPTION
UPGRADE COLOUR BOARD**

Provide Laundry Upgrade with s.s. inset trough
in 20mm stone bench top.
1no. 450mm and 1no. 900mm base cabinets,
1no. 450mm and 1no. 900mm overhead cabinets
and additional tiled splashback and bench top to suit.
Option provides upgrade specification

FLOORPLAN OPTIONS

 **4**  **2**  **2**

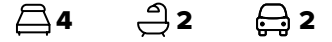


**ENSUITE OPTION
STANDARD COLOUR BOARD**

Provide Ensuite Option with 1no. 1200mm x 900mm polymarble shower base in lieu of standard.

1no. 1582mm wide vanity unit with 2no. basins in lieu of standard. Increase Ensuite width by 300mm and decrease W.I.R width by 100mm and decrease Entry width by 200mm. Provide 720mm cavity sliding door off W.I.R in lieu of 720mm hinged door. Option contains standard specification

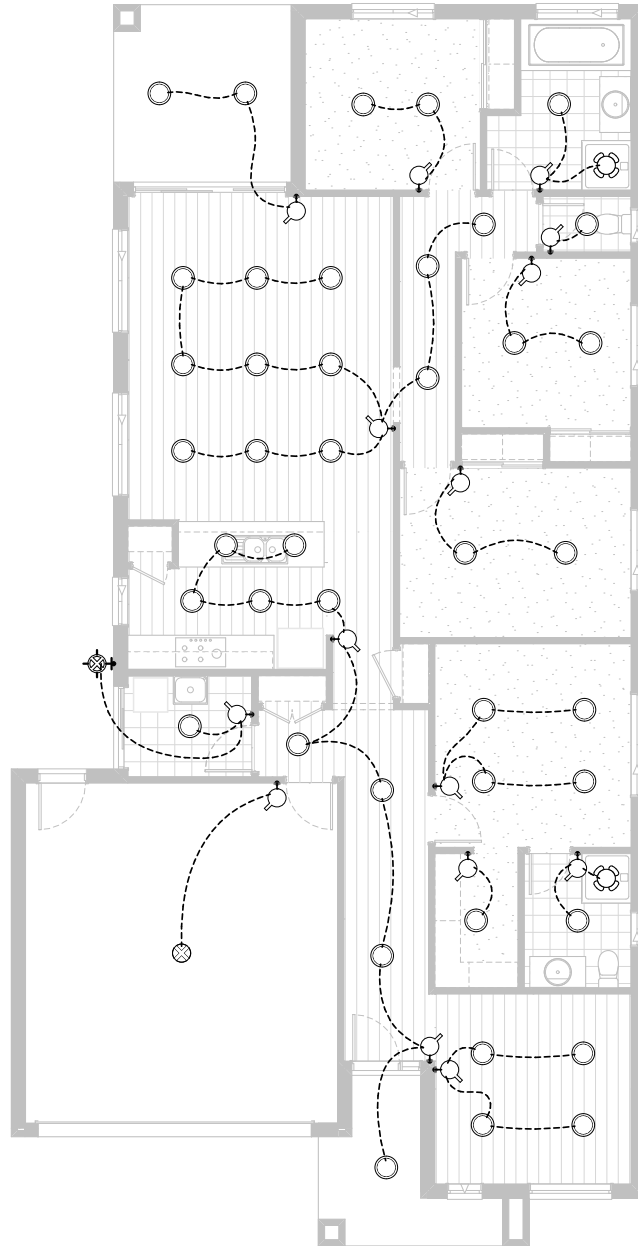
FLOORPLAN OPTIONS



ENSUITE OPTION UPGRADE COLOUR BOARD

Provide Ensuite Option with 1no. 1200mm x 900mm tiled shower base in lieu of standard, with 300mm high x 600mm wide tiled niche.
1no. 1582mm wide vanity unit with 2no. basins in lieu of standard. Provide double towel rail.
Provide translucent glazing to window.
Increase Ensuite width by 300mm and decrease W.I.R width by 100mm and decrease Entry width by 200mm. Provide 720mm cavity sliding door off W.I.R in lieu of 720mm hinged door.
Option provides upgrade specification

FLOORPLAN OPTIONS



Option ELE-1

Provide LED lighting upgrade