

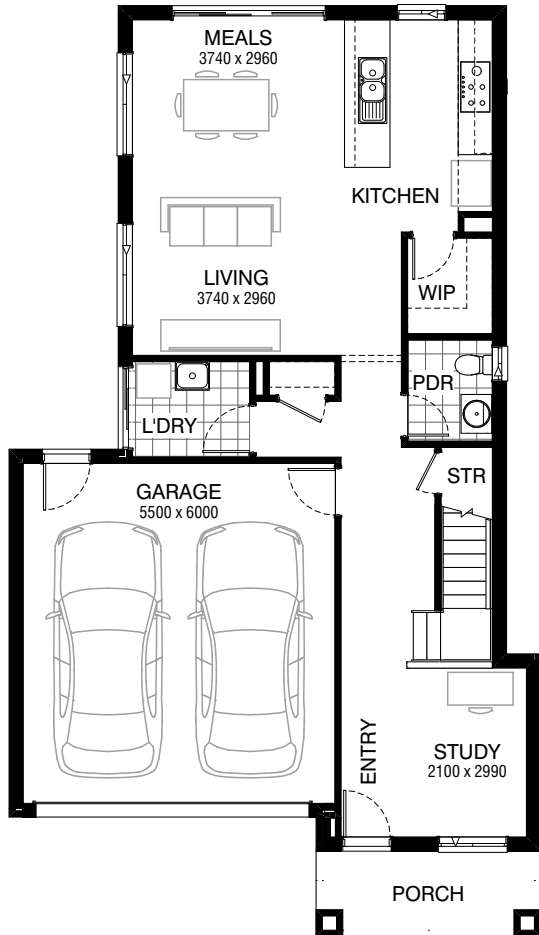
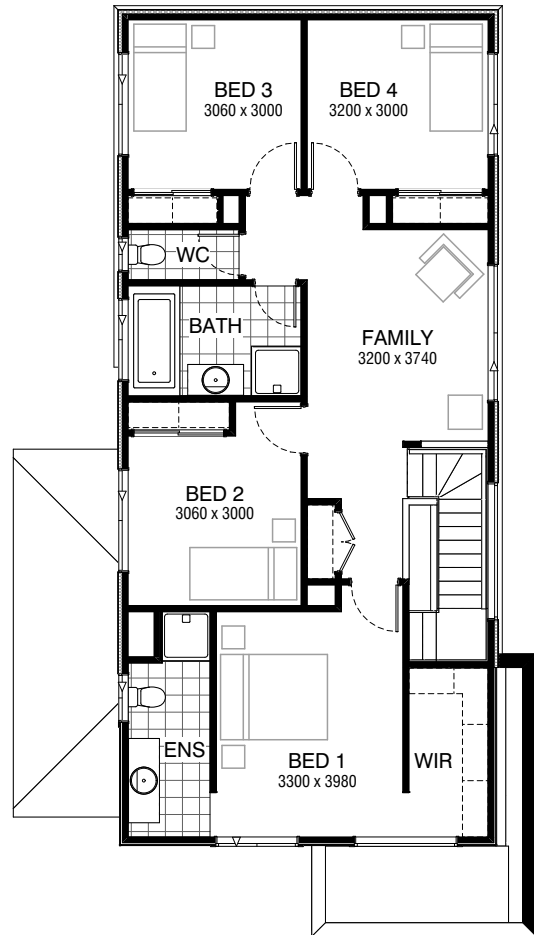


Total squares **23.1sq**

 **4**  **2.5**  **2**



GROUND FLOOR



FIRST FLOOR



**FLOORPLAN OPTIONS**

All available ready-to-go floorplan options for this design can be viewed on the following pages, or visit [www.burbank.com.au](http://www.burbank.com.au).

**Facades available:**

Condor, Matisse, Monet	
<b>Overall home width</b>	<b>9.35m</b>
<b>Overall home length</b>	<b>16.37m</b>




Residence	172.9m <sup>2</sup>	18.6sq
Garage	36.1m <sup>2</sup>	3.9sq
Porch	5.9m <sup>2</sup>	0.6sq
Alfresco	19.1m <sup>2</sup>	2.1sq
<b>Total</b>	<b>214.9m<sup>2</sup></b>	<b>23.1sq</b>

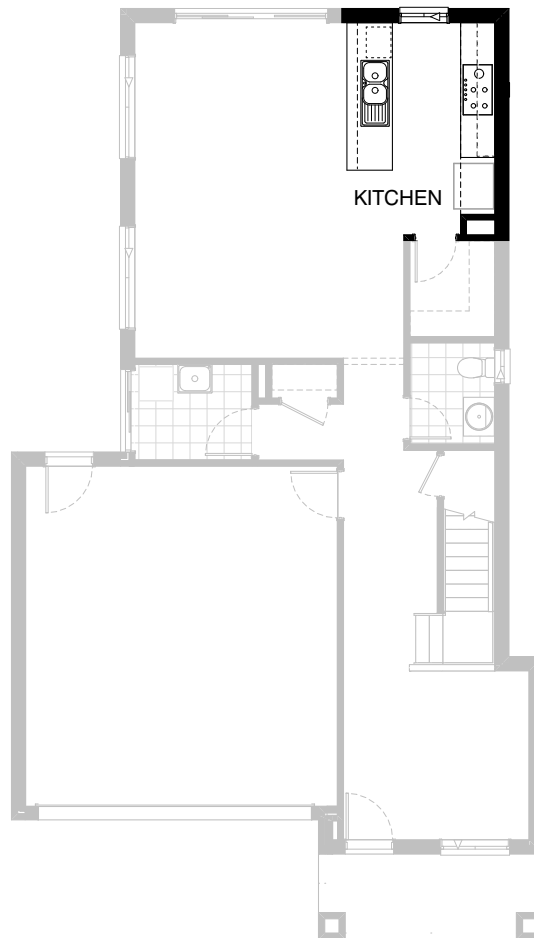
Listed details based on Condor façade floorplan (illustrated)

\*Copyright conditions. All photos and illustrations are representative only. Floor plans and specifications may be varied by Burbank without notice, the dimensions are diagrammatic only and a Building Contract with final drawings will display correct dimensions and detail. All designs are the property of Burbank and must not be used, reproduced, copied or varied, wholly or in part without written permission from an authorised Burbank representative. Copyright Burbank Australia Pty Ltd. ABN 91 007 099 872. Builders Registration Number CDB-U-52603.

**Call 13 BURBANK**  
**Visit [burbank.com.au](http://burbank.com.au)**

**FLOORPLAN OPTIONS**




 **4**     **2.5**     **2**

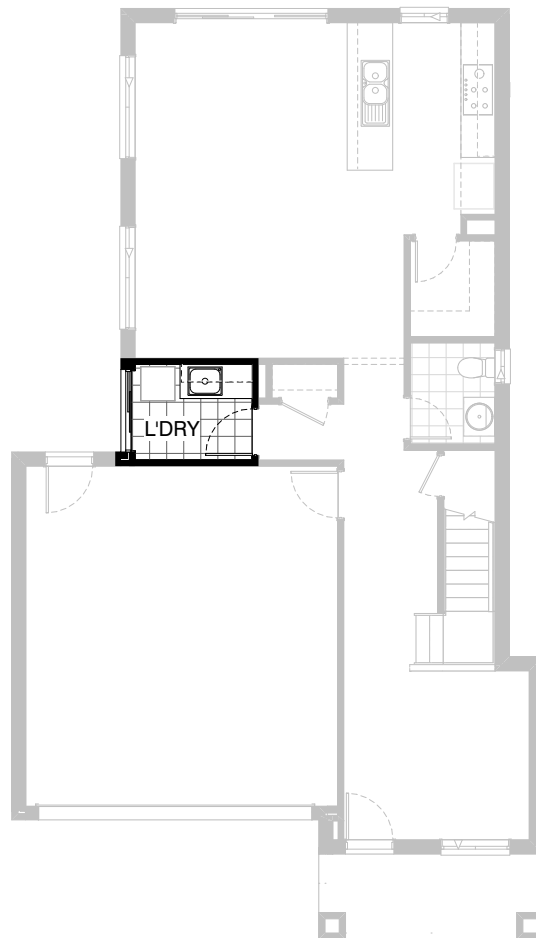


**Option K-1**

Provide Kitchen Upgrade with additional  
1no. MW. provision with pot drawer below  
in lieu of standard 1no. 600mm base cabinet.

**FLOORPLAN OPTIONS**


 **4**    **2.5**    **2**

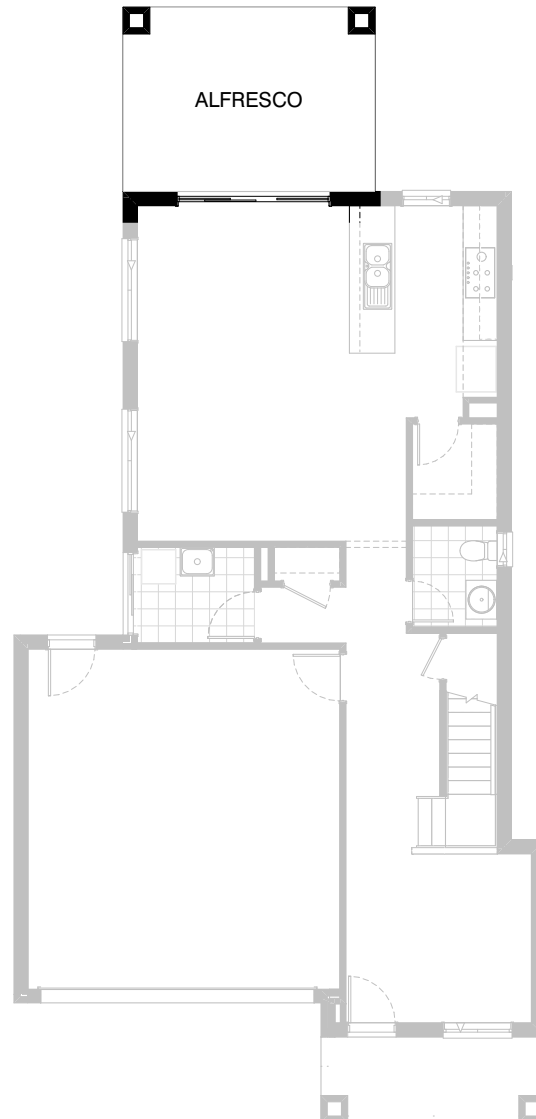


**Option LD-1**

Provide Laundry Option with s.s. inset trough  
in 32mm laminated bench top.  
1no. 400mm and 1no. 800mm base cabinets and  
1no. 400mm and 1no. 800mm overhead cabinets  
and additional tiled splashback and bench top to suit.

**FLOORPLAN OPTIONS**




 **4**    **2.5**    **2**

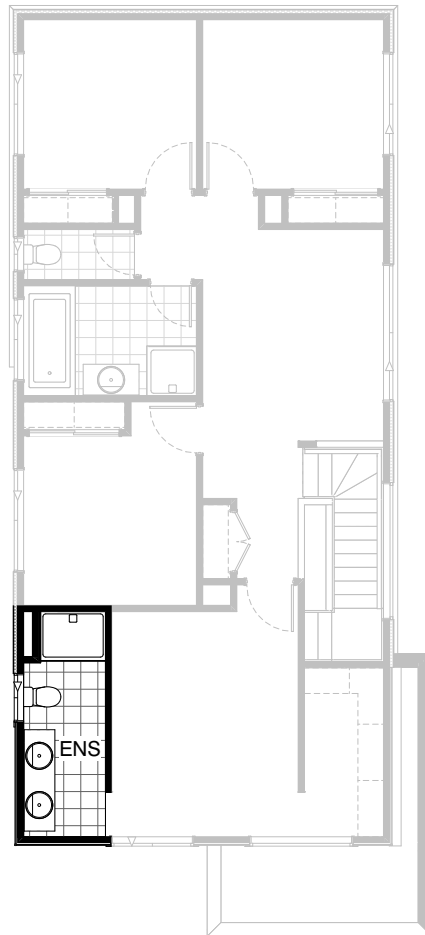


**Option EP1-1**

Provide Alfresco to rear of Meals with tiled hip roof, structural concrete floor, light point and 2no. 470mm x 470mm brick piers.  
Increases area by 14.35m<sup>2</sup>.  
Increase length by 3240mm.

**FLOORPLAN OPTIONS**

 **4**    **2.5**    **2**



**Option ENS-1 FF**

Provide Ensuite Upgrade with additional  
1no. 1200mm x 900mm polymarble shower  
base in lieu of standard and 1no. 1782mm  
vanity basins with 2no. basins to suit.  
Suits Condor and Matisse facade