


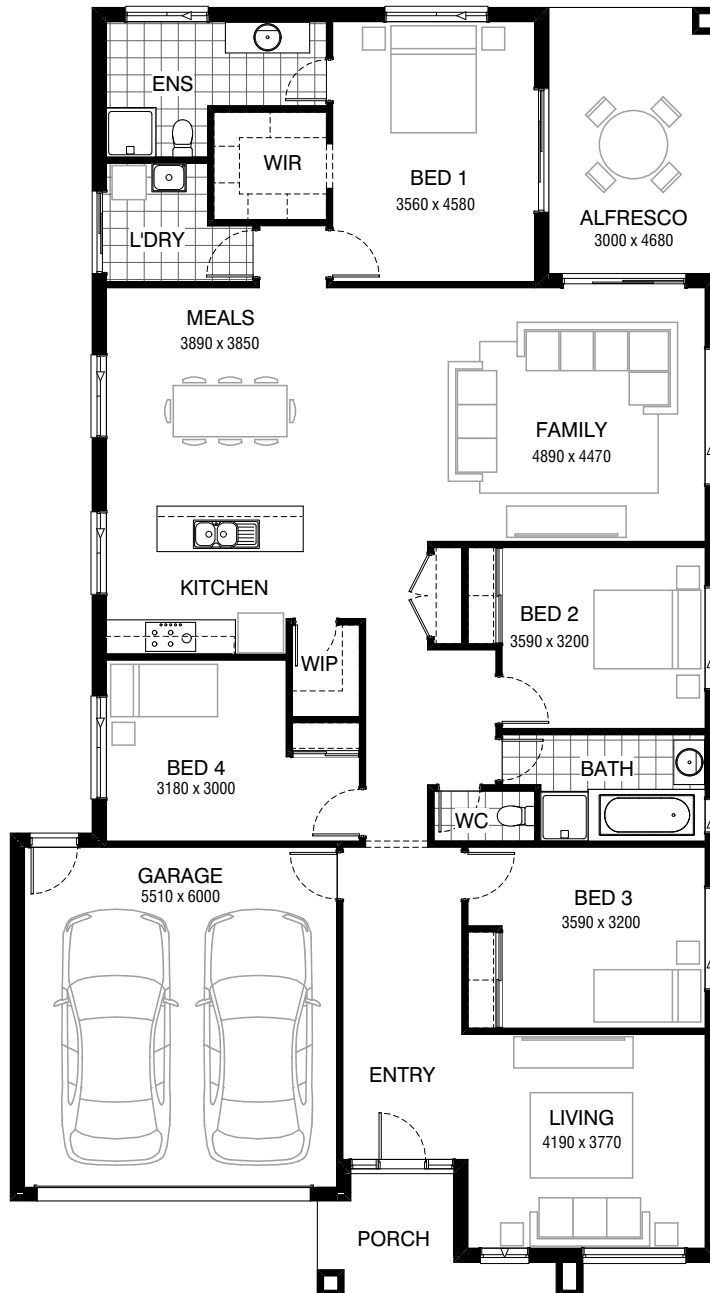


Total squares **271sq**

 **4**  **2**  **2**



FLOORPLAN OPTIONS

All available ready-to-go floorplan options for this design can be viewed on the following pages, or visit www.burbank.com.au.

Facades available:

Drysdale, Arkley, Coburn, Collins
Haring, Dowd, Nolan

Overall home width 12.47m

Overall home length 22.67m

Residence	194.7m ²	21.0sq
Garage	36.3m ²	3.9sq
Porch	6.3m ²	0.7sq
Alfresco	14.0m ²	1.5sq
Total	251.3m²	27.1sq

Listed details based on Drysdale façade floorplan (illustrated)

*Copyright conditions. All photos and illustrations are representative only. Floor plans and specifications may be varied by Burbank without notice, the dimensions are diagrammatic only and a Building Contract with final drawings will display correct dimensions and detail. All designs are the property of Burbank and must not be used, reproduced, copied or varied, wholly or in part without written permission from an authorised Burbank representative. Copyright Burbank Australia Pty Ltd. ABN 91 007 099 872. Builders Registration Number CDB-U-52603.

FLOORPLAN OPTIONS



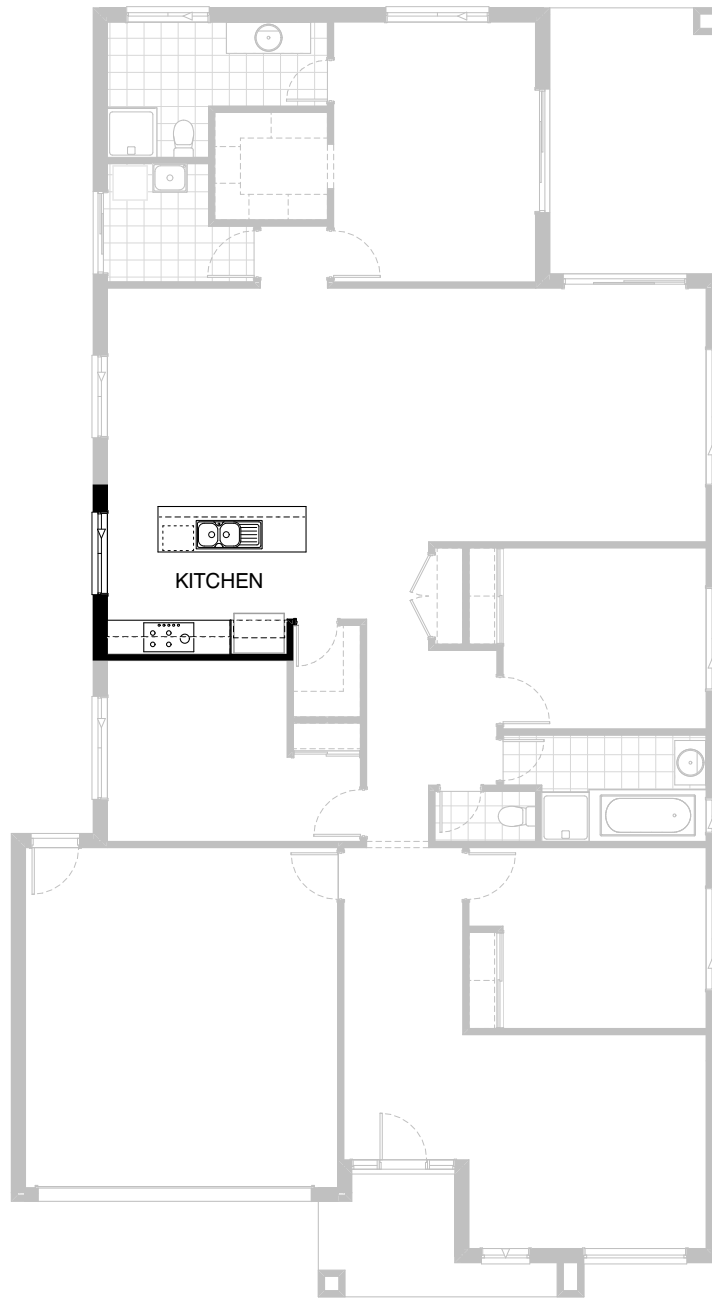
4



2



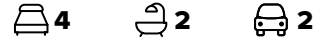
2



Option K-1

Provide Kitchen upgrade with 1no. laminated open shelf above refrigerator space, 2no. 600mm base cabinets, 2no. 600mm overhead cabinets, 900mm underbench oven, 1no 900mm hotplate with 900mm retractable rangehood, 1no. laminated MW. provision with pot drawer below, 1no. 800mm base cabinet, 1no. laminated DW. provision and 1no. 450mm drawers with additional tiled splashback and bench top to suit.

FLOORPLAN OPTIONS






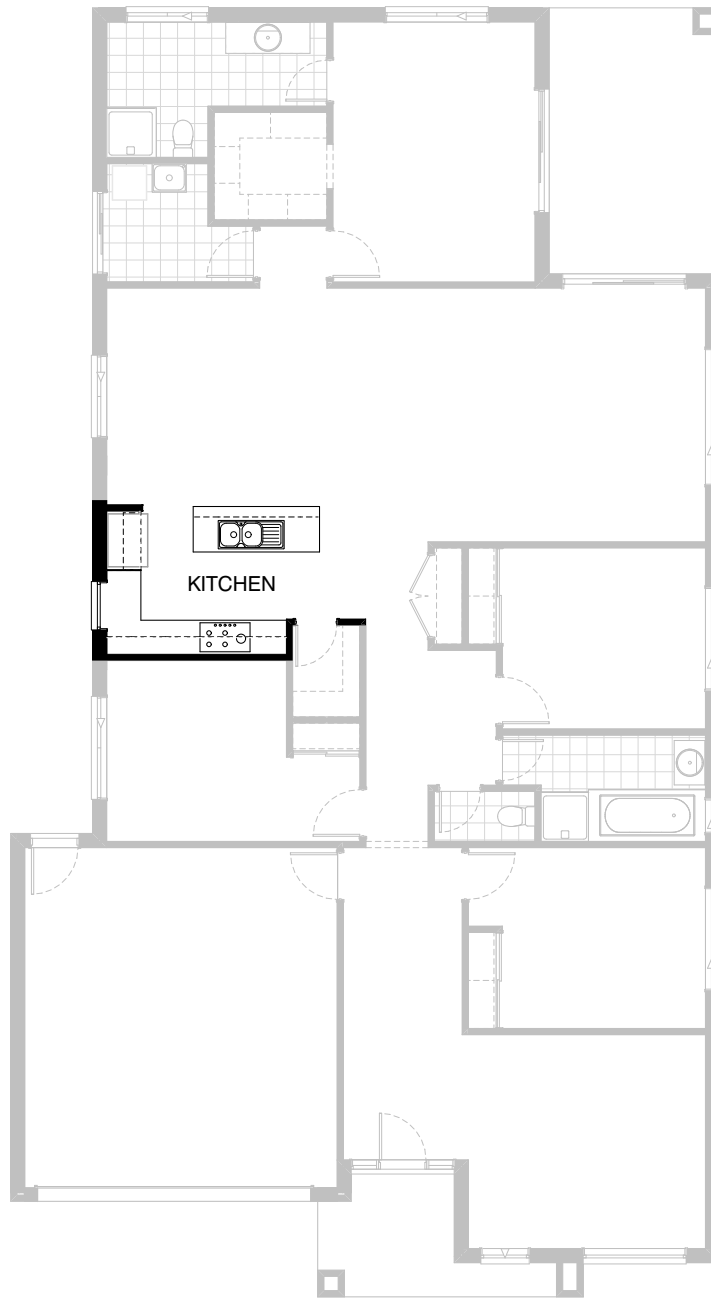
Option K-2

Provide Kitchen and Butlers Pantry Option in lieu of W.I.P.
 Provide 1no. laminated open shelf above refrigerator space,
 2no. 800mm base cabinets, 1no. DW. provision, 1no. 450mm drawers,
 2no. 700mm base cabinets, 2no. 300mm base cabinets, 2no. 700mm
 overhead cabinets, 2no. 300mm overhead cabinets, 1no. 900mm
 underbench oven, 1no 900mm hotplate and 1no. 900mm retractable rangehood,
 1no. 2057mm x 850mm aluminium sliding window in lieu of standard,
 1no. 2057mm x 1450mm sliding window, additional tiled splashback
 and bench top to Kitchen.
 Provide additional 1no. 300mm base cupboard, 1no. 700mm base cabinet,
 1800mm high open shelves with adjustable shelves above bench top,
 1no. single bowl sink with drainer and tiled splashback and bench top to
 suit. Extend width of Butlers pantry & Bed 4 robe by 180mm.

*Copyright conditions. All photos and illustrations are representative only. Floor plans and specifications may be varied by Burbank without notice, the dimensions are diagrammatic only and a Building Contract with final drawings will display correct dimensions and detail. All designs are the property of Burbank and must not be used, reproduced, copied or varied, wholly or in part without written permission from an authorised Burbank representative. Copyright Burbank Australia Pty Ltd. ABN 91 007 099 872. Builders Registration Number CDB-U-52603.

FLOORPLAN OPTIONS

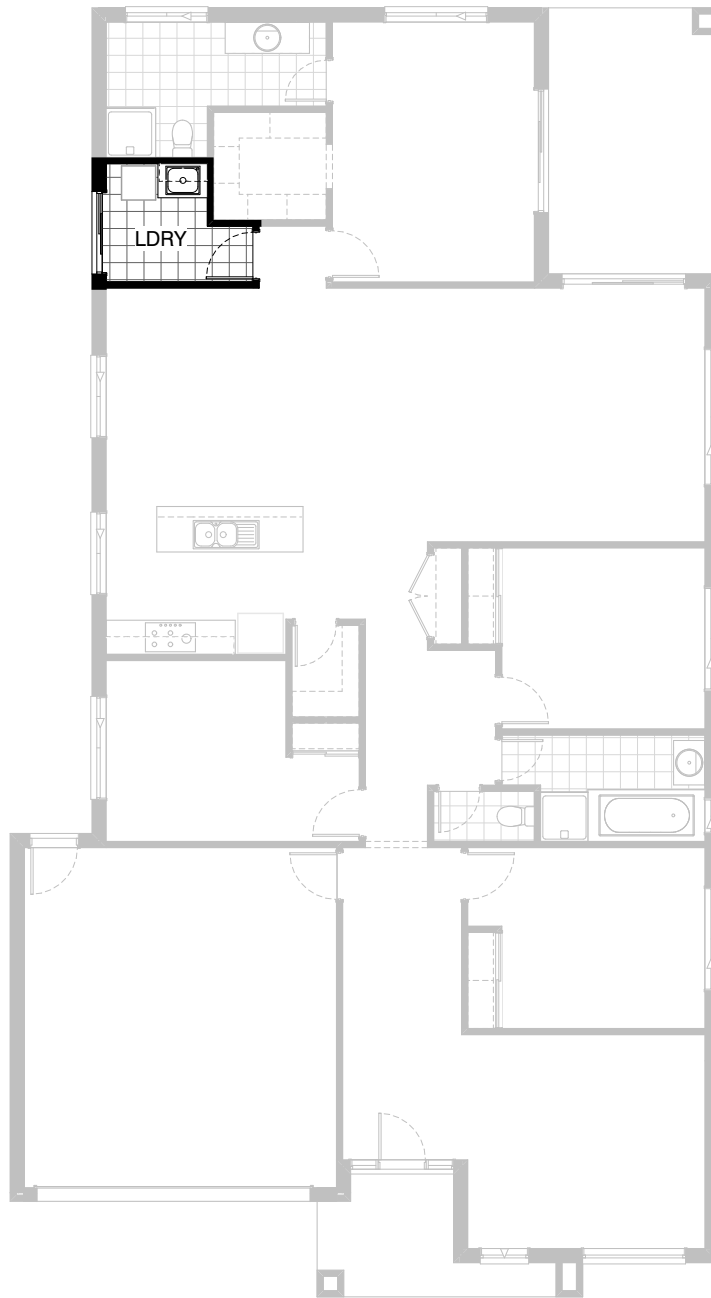
 **4**  **2**  **2**



Option K-3

Provide 'L' shaped Kitchen Option by reducing Meals length by 50mm.
Provide additional 2no. 400mm base cabinets, 1no. 800mm base cabinet, 1no. 300mm base cabinet, 1no. laminated DW. provision, 1no. 900mm blind carcass, 2no. 600mm base cabinets, 3no. 600mm overhead cabinets, 1no. 300 overhead cabinet, 1no. laminated open shelf above refrigerator space. 1no. 900mm overhead cabinet, 1no 900mm hotplate with retractable rangehood, 1no. 900mm underbench oven with cooktop. 1no. 1200mm x 850mm aluminium fixed window with no bottom reveal in lieu of standard 1no. 2057mm x 1450mm sliding window. Additional tiled splashback and bench top to suit. Provide additional plaster lined wall for fridge space.



FLOORPLAN OPTIONS

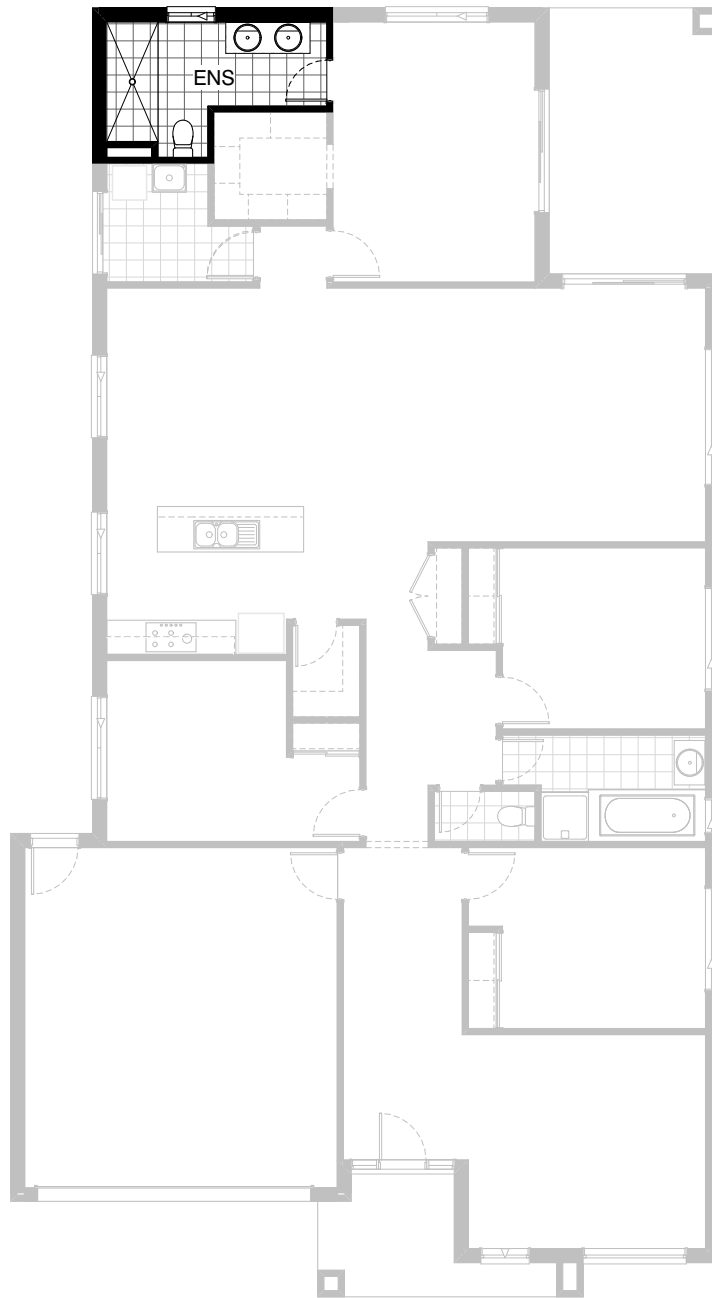


Option LD-1

Provide Laundry upgrade with laminated inset trough,
1no. 800mm base cabinet and 1no. 800mm overhead
cabinet with additional tiled splashback and bench top to suit.

FLOORPLAN OPTIONS

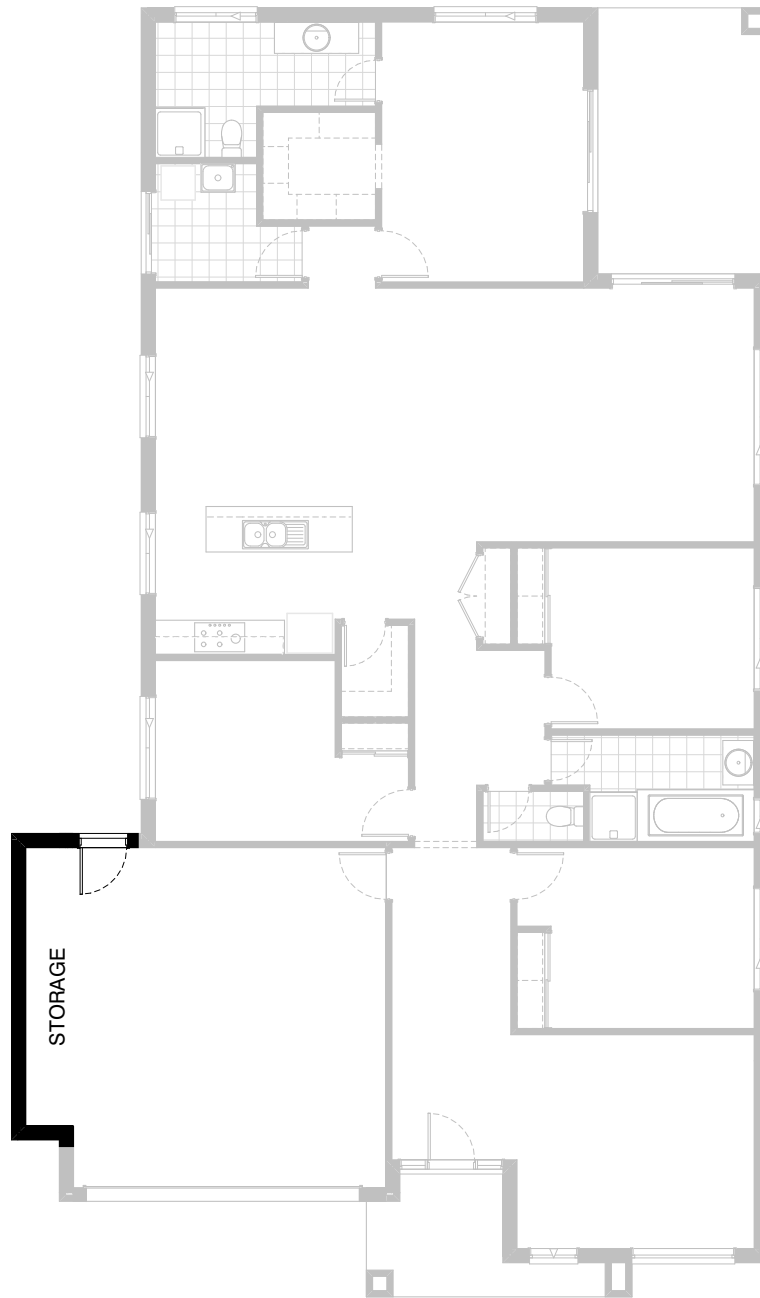
 **4**  **2**  **2**



Option ENS-1

Provide Ensuite upgrade with 2100mm wide tiled shower base in lieu of standard. Provide 2no. basins to vanity unit and decrease aluminium sliding window to 1200mm x 850mm in lieu of 1200mm x 1450mm to suit.

FLOORPLAN OPTIONS

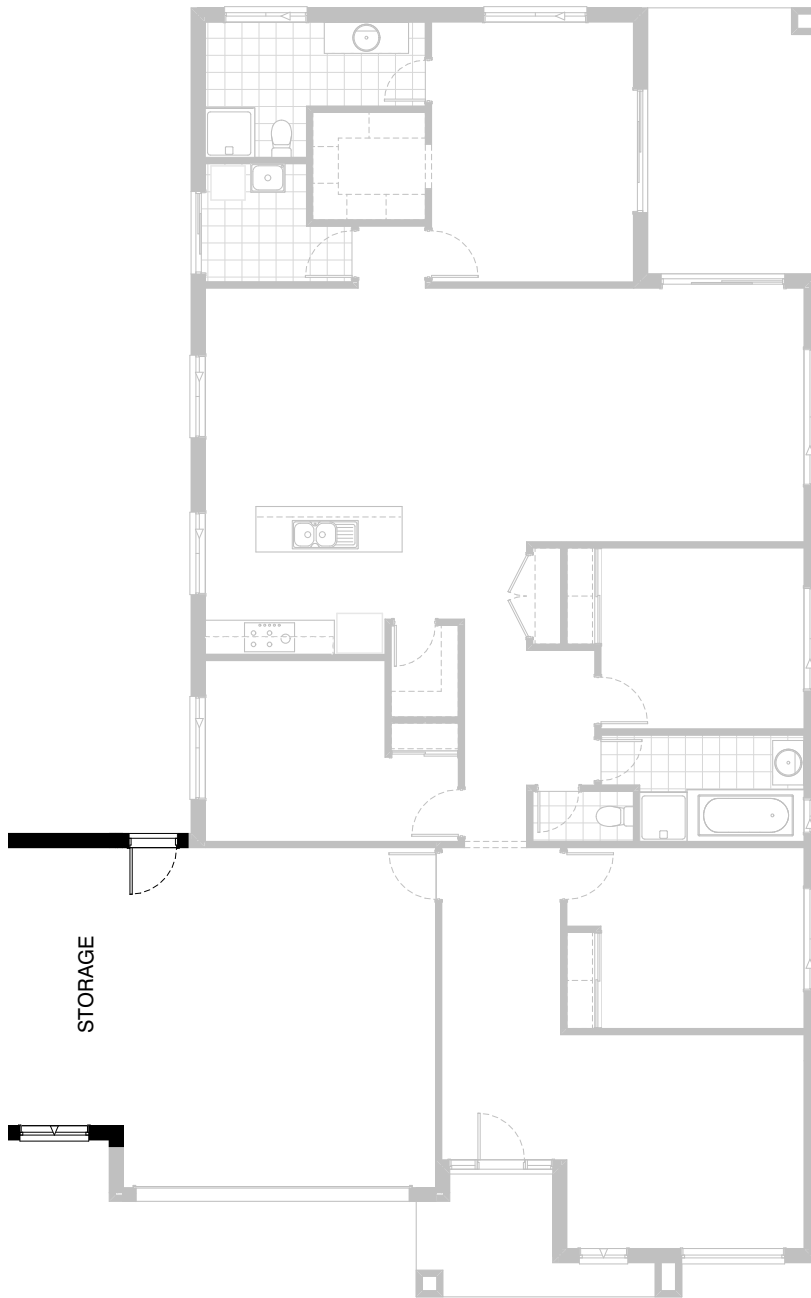


Option G-1

Provide extension to Garage to create additional Storage area.
Increases area by 4.53m².
Increases width by 840mm.

FLOORPLAN OPTIONS




 **4**  **2**  **2**

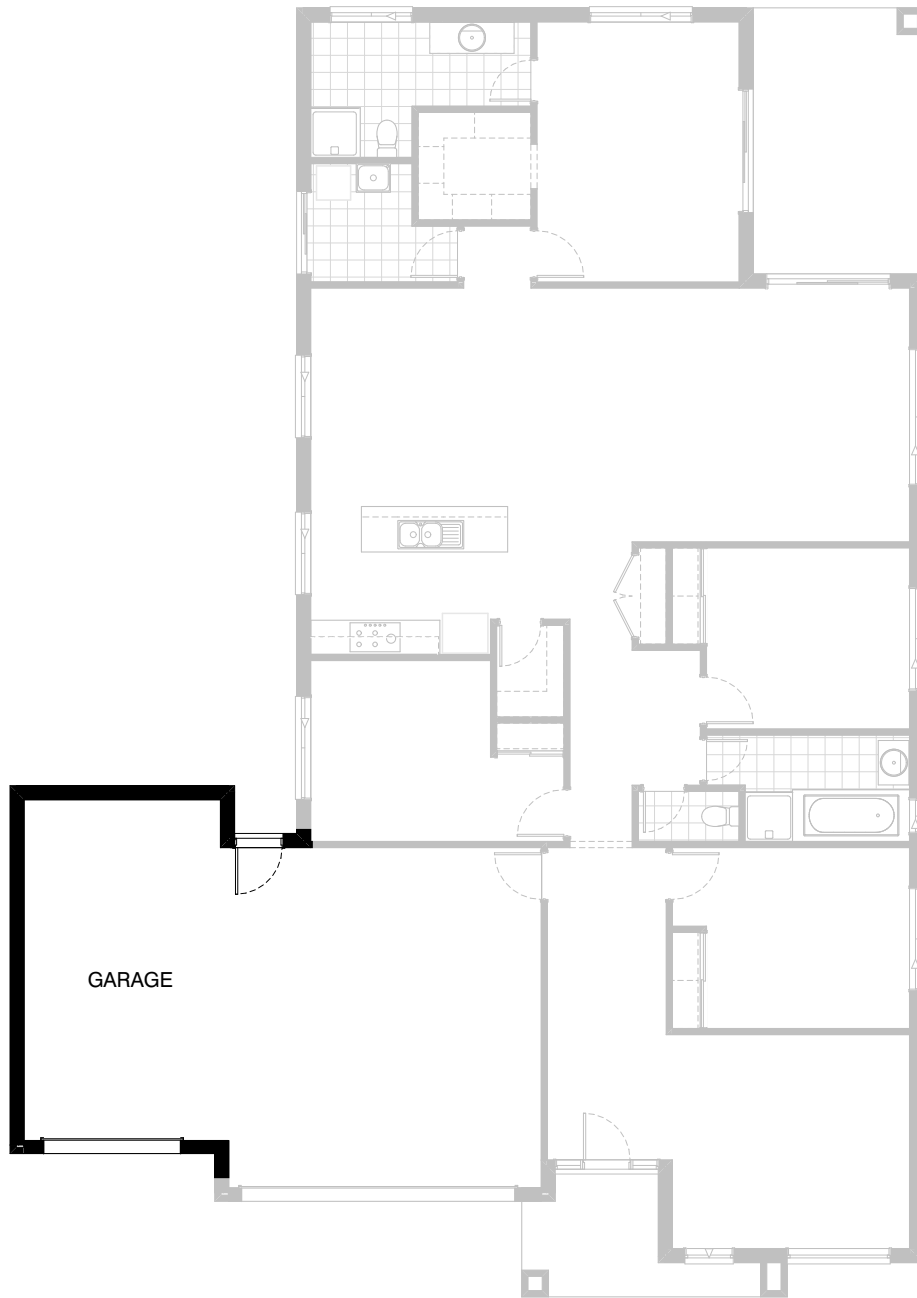


Option G-2

Provide extension to Garage to create
Storage area including additional
2057 x 610 aluminium awning window.
Increases area by 7.76m².
Increases width by 1440mm.

FLOORPLAN OPTIONS

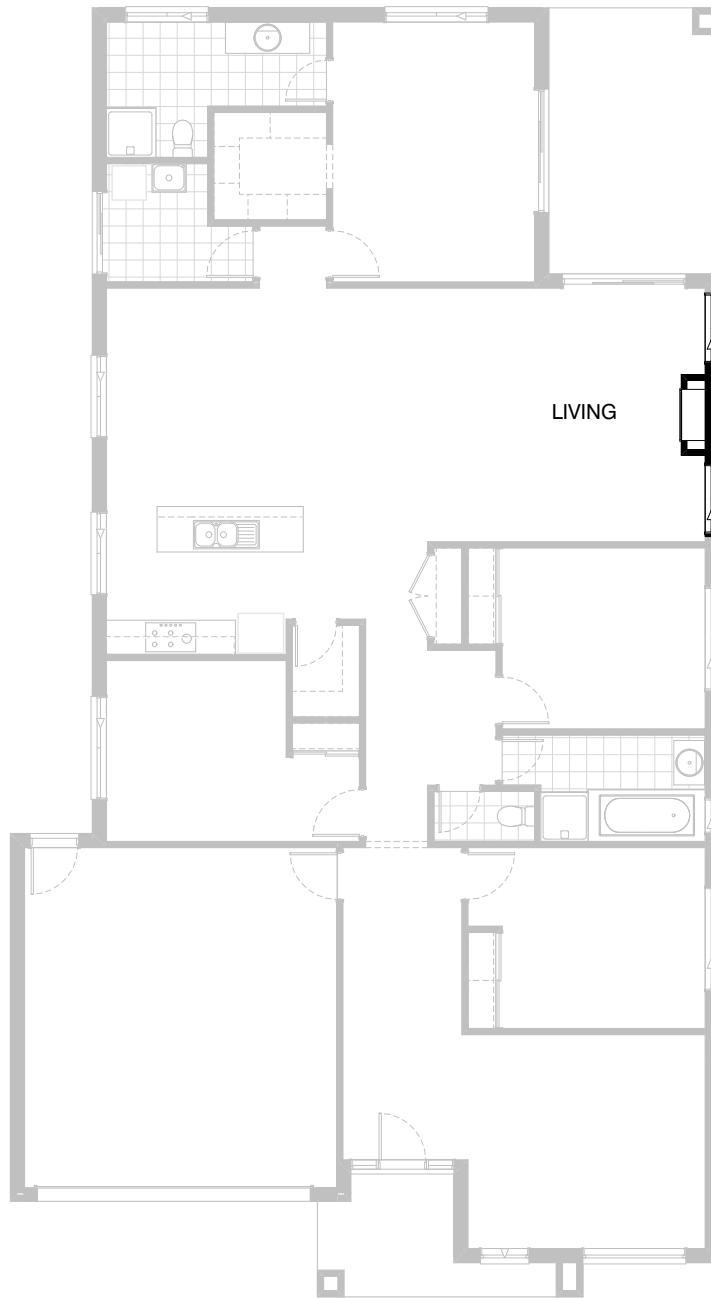
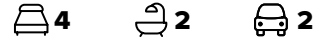
 **4**  **2**  **2**



Option G-3

Provide triple car Garage including additional Garage door as per colour selection.
Increases area by 23.59m².
Increases width by 3600mm.

FLOORPLAN OPTIONS



Option IP1-1

Provide Real Flame Inspire 900 gas fireplace, 400mm off floor level in a 1400mm x 420mm boxed out plaster wall with a 4 sided black fascia to Family room side wall including additional 2no. 2057mm x 1210mm aluminium sliding windows in lieu of standard 1no. 2057mm x 2410mm window.

FLOORPLAN OPTIONS



Option IP1-2

Mirror rear of dwelling beyond
Meals / Family

FLOORPLAN OPTIONS



Option EP1-1

Replace 2No. standard ASD2121 sliding doors to
Alfresco with ASD2124 sliding door and
ASDS2132 stacker sliding door