


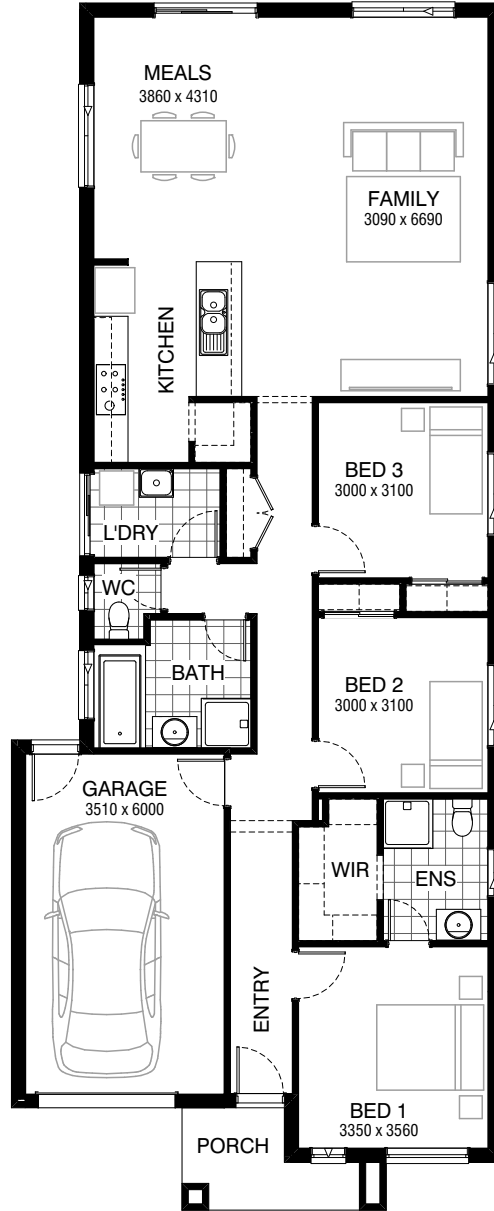


Total squares **17.3sq**

 **3**  **2**  **1**



FLOORPLAN OPTIONS

All available ready-to-go floorplan options for this design can be viewed on the following pages, or visit www.burbank.com.au.

Facades available:

Drysdale, Arkley, Nolan	
Dowd, Haring	
Overall home width	8.63m
Overall home length	21.23m

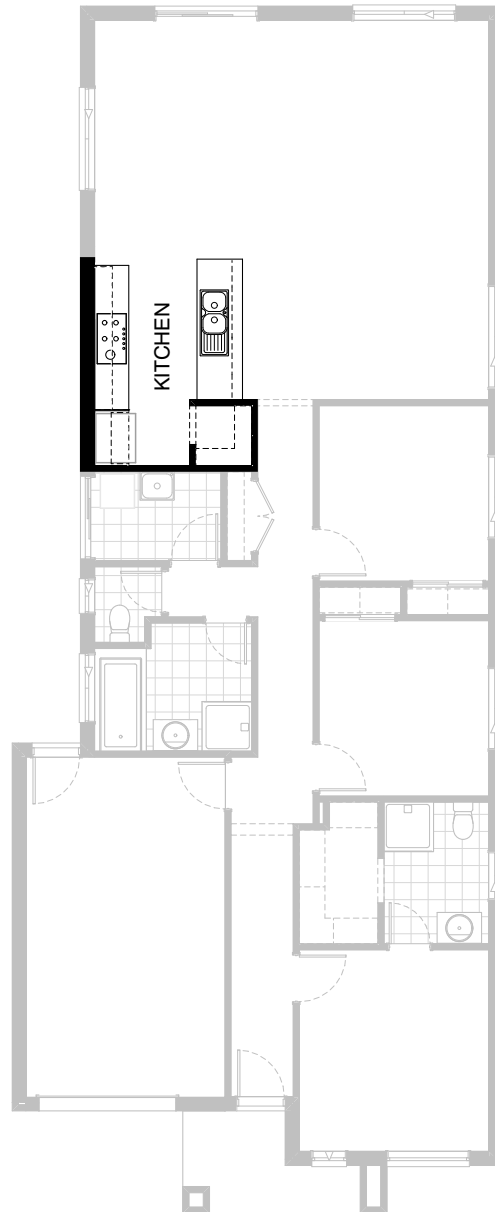
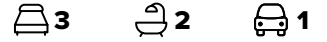
Residence	132.2m ²	14.2sq
Garage	23.7m ²	2.6sq
Porch	4.7m ²	0.5sq
Total	160.6m²	17.3sq

Listed details based on Drysdale façade floorplan (illustrated)

*Copyright conditions. All photos and illustrations are representative only. Floor plans and specifications may be varied by Burbank without notice, the dimensions are diagrammatic only and a Building Contract with final drawings will display correct dimensions and detail. All designs are the property of Burbank and must not be used, reproduced, copied or varied, wholly or in part without written permission from an authorised Burbank representative. Copyright Burbank Australia Pty Ltd. ABN 91 007 099 872. Builders Registration Number CDB-U-52603.

Call 13 BURBANK
Visit burbank.com.au




FLOORPLAN OPTIONS

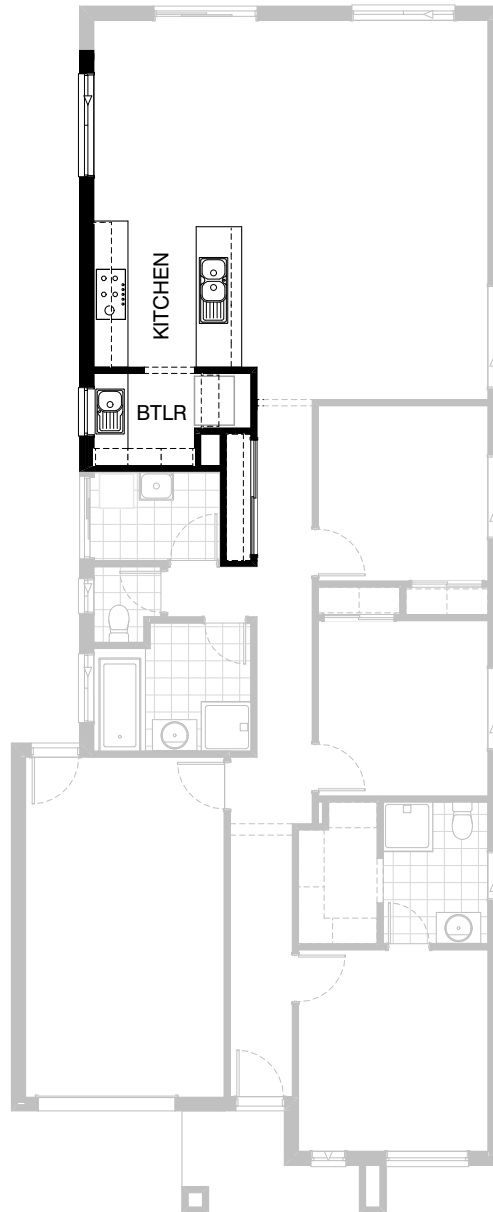


Option K-1

Provide Kitchen Option with 1no. laminated Open shelf above refrigerator space, 2no. 800mm base cupboards, 2no. 800mm overhead cupboards, 1 no. 900 underbench oven and 1no. 900mm hotplate with 1 no. 900mm retractable range hood, 1no. 450mm drawers, 1no. 900mm base cupboard, 1no. laminated DW provision and 1no. 400mm base cupboard. Provide additional tiled splash back and bench top to suit.

FLOORPLAN OPTIONS




 **3**  **2**  **1**

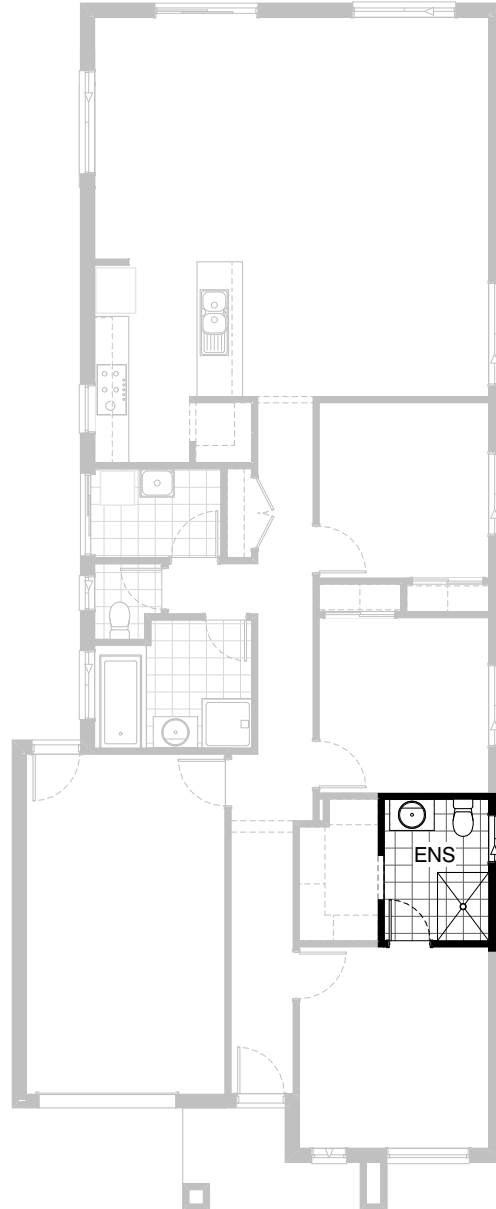


Option K-2

Provide Kitchen upgrade with additional Butlers Pantry. Provide 1no. 450mm drawers, 1no. 900mm base cupboards, 2no. 800mm base cupboards, 1no. DW provision, 1no. 400mm base cupboard, 2no. 800mm over head cupboards, 1no. 900mm under bench oven, 1no. 900mm hotplate and 1no.900mm retractable range hood with additional tiled splash back to Kitchen. Provide additional 1no. 900mm base cupboard, 1no. 350mm base cupboard, 1800mm high open fixed shelves with adjustable shelves above benchtop, 1no. single bowl sink with drainer, refrigerator space with open 1no. 900mm open shelf above and tiled splash back to Butlers Pantry. Provide 1200mm x 850mm fixed window with no bottom reveal to Butlers and move existing window to Meals towards rear of house 240mm. Linen width to be extended and fitted with internal sliding doors in lieu of double hinged doors.

FLOORPLAN OPTIONS

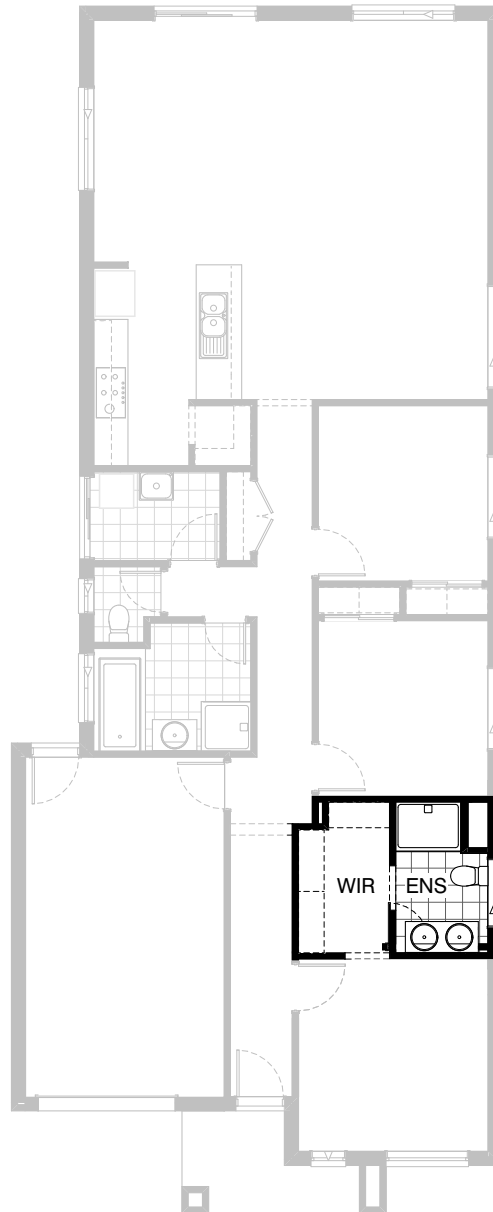
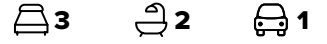
 **3**  **2**  **1**



ENS-1

Provide Ensuite upgrade including 1200mm x 900mm tiled shower base with relocation of vanity. Provide 1200mm x 850mm sliding window

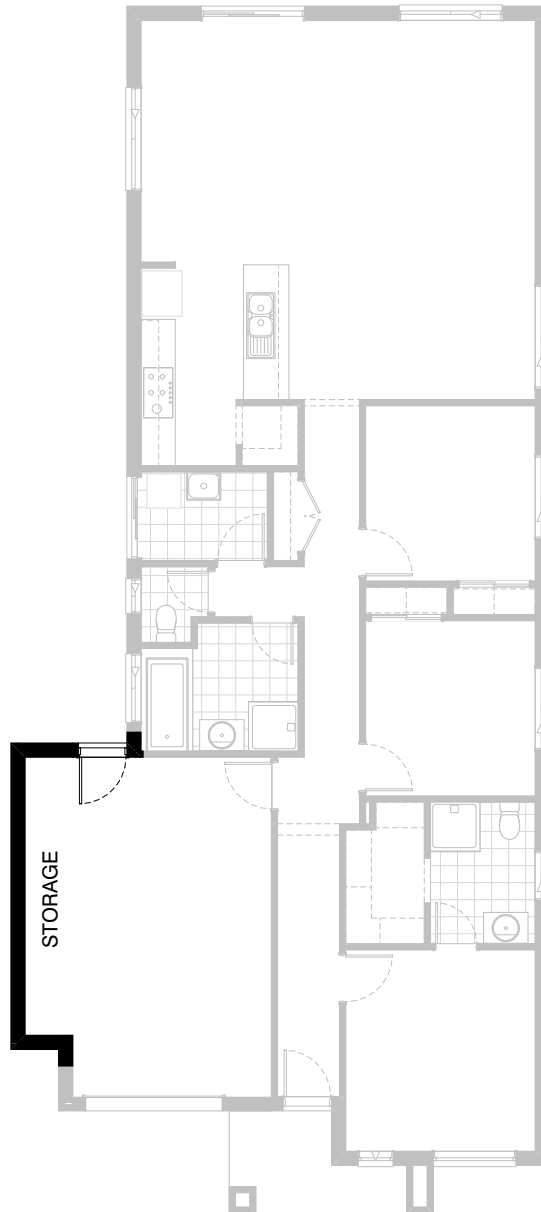
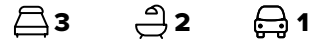
FLOORPLAN OPTIONS



ENS-2

Provide Ensuite Option with additional 1no. 900mm x 1200mm polymarble shower base, 1no. 1282mm wide vanity unit with 2no. basins and 1no. 1200mm x 1210mm aluminium sliding window. Decrease Bed 1 length by 160mm and increase WIR and Enuite to suit, increase WIR width by 220mm and decrease Ensuite width to suit and delete 1no. 720mm hinged door to Ensuite and provide 1no. 800mm wide opening to suit.

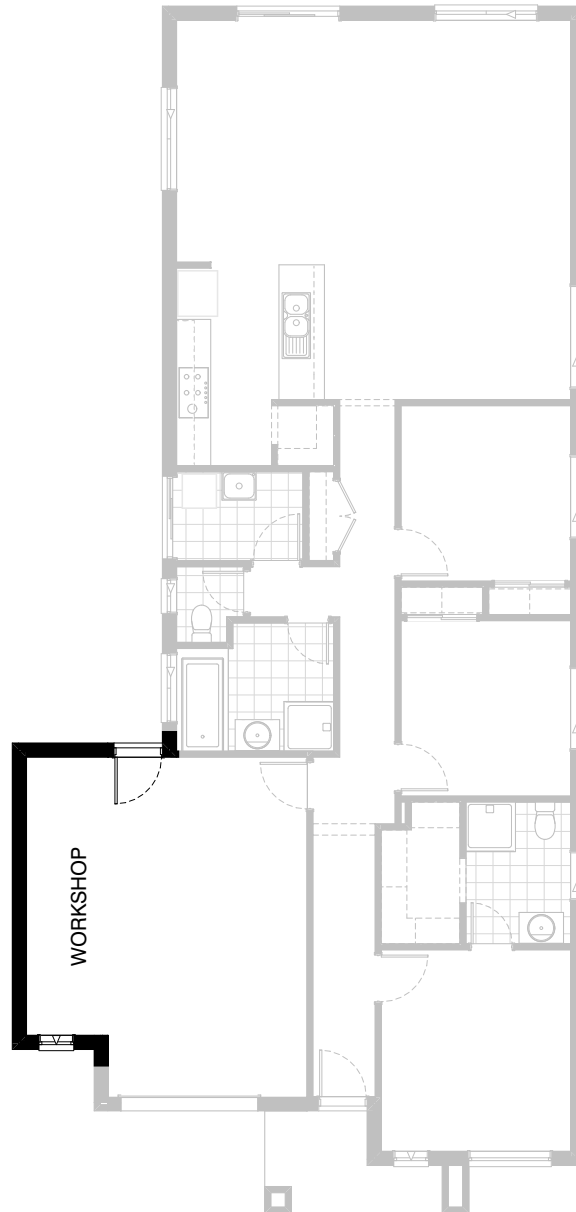
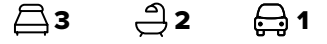
FLOORPLAN OPTIONS



Option G-1

Provide extension to Garage to
create additional Storage area.
Increases area by 4.53m².
Increases width by 840mm.

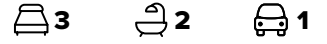
FLOORPLAN OPTIONS



Option G-2

Provide extension to Garage to create Workshop area including additional 2057 x 610 aluminium awning window. Increases area by 7.76m². Increases width by 1440mm.

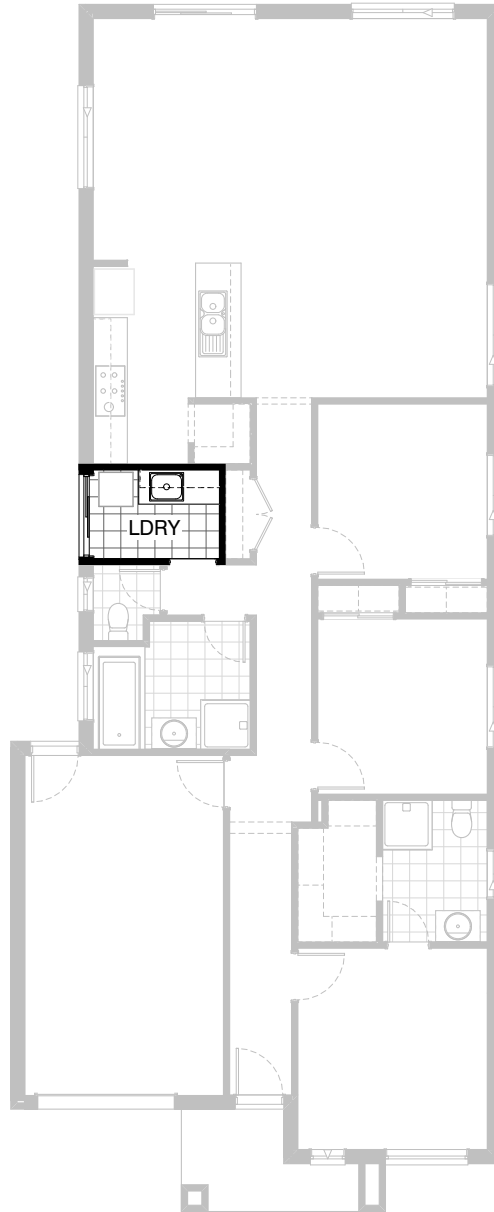
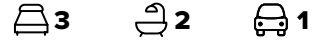
FLOORPLAN OPTIONS



Option G-3

Provide double car Garage including larger Garage door to suit.
Increases area by 15.52m².
Increases width by 2400mm.




FLOORPLAN OPTIONS

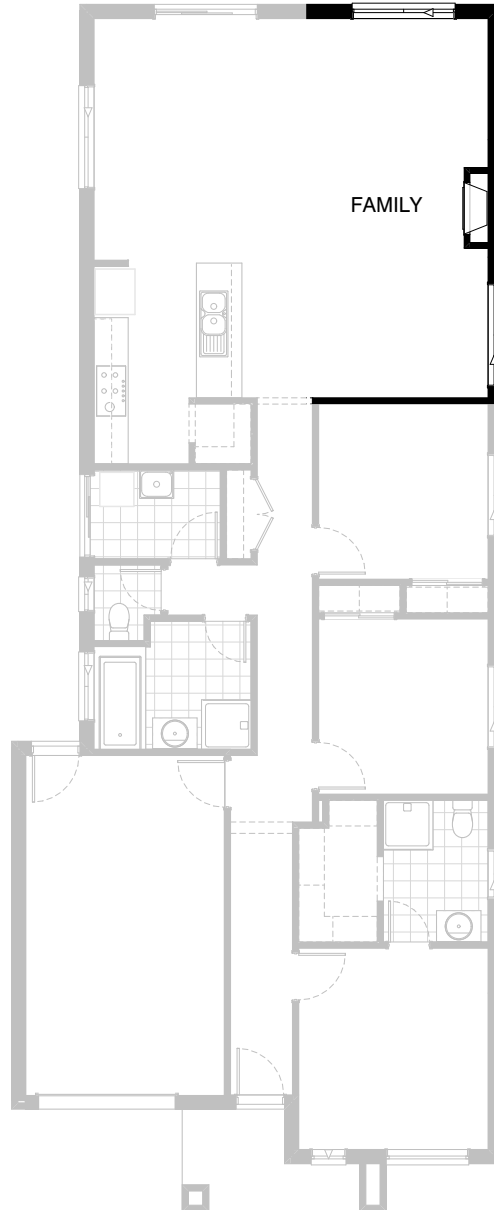


Option LD-1

Provide Laundry Upgrade including s.s. inset
trough in 32mm laminated bench top,
1no. 900mm and 1no. 450mm base cabinets,
1no. 900mm and 1no. 450mm overhead cabinets,
additional tiled splashback and bench top to suit.

FLOORPLAN OPTIONS

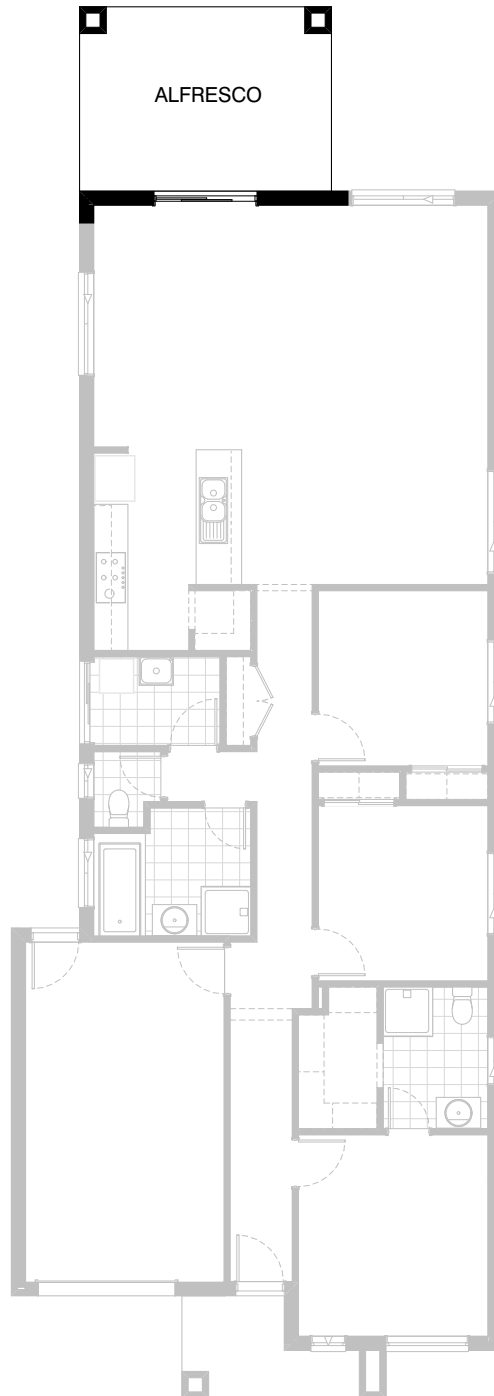
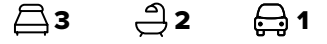
 **3**  **2**  **1**



Option IP1-1

Provide Jetmaster 3X series gas fireplace,
400mm off floor level in a 1400mm x 420mm
boxed out plaster wall with a 4 sided black
fascia to Family room side wall.

FLOORPLAN OPTIONS



Option EP1-1

Provide Alfresco under dwelling roof line to rear of Meals including structural concrete floor, light point and 2no. 470mm x 470mm brick piers.
Increases area by 14.35m².
Increases length by 3240mm.