

<b>Facades available:</b>	
Lachlan, Barrington, Flinders	
Cooper, Nepean	
<b>Overall home width</b>	<b>12.59m</b>
<b>Overall home length</b>	<b>22.31m</b>

Residence	195.8m <sup>2</sup>	21.1sq
Garage	36.4m <sup>2</sup>	3.9sq
Porch	6.9m <sup>2</sup>	0.8sq
Alfresco	11.6m <sup>2</sup>	1.3sq
<b>Total</b>	<b>250.7m<sup>2</sup></b>	<b>27sq</b>

**FLOORPLAN OPTIONS**

We personalise our floorplans. Talk to us about our huge range of ready-to-go design options.

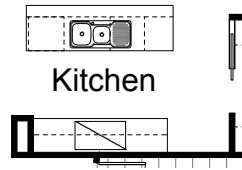
Listed details based on Lachlan facade floorplan (illustrated)

\*Copyright conditions. All photos and illustrations are representative only. Floor plans and specifications may be varied by Burbank without notice, the dimensions are diagrammatic only and a Building Contract with final drawings will display correct dimensions and detail. All designs are the property of Burbank and must not be used, reproduced, copied or varied, wholly or in part without written permission from an authorised Burbank representative. Copyright Burbank Australia (NSW) Pty Ltd. ABN 88 610 822 770. NSW BL 295627C ACT BL 2016566.

**Call 13 BURBANK**  
**Visit [burbank.com.au](http://burbank.com.au)**

**OPTION K1**

Provide Kitchen upgrade with 1no. laminated MW provision in lieu of standard 1no. 600mm base cupboard.



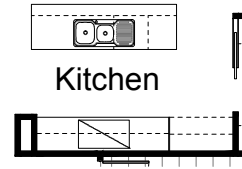
**OPTION G1**

Provide extension to Garage to create additional Storage area. Increases area by 4.58m<sup>2</sup>. Increases width by 850mm.



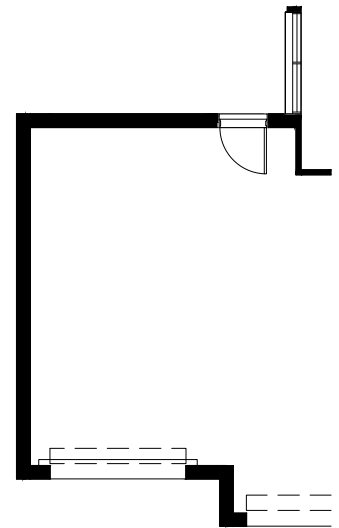
**OPTION K3**

Provide Kitchen upgrade with laminated open shelf to above refrigerator space.



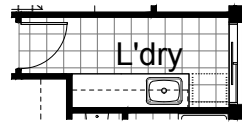
**OPTION G3**

Provide triple car Garage including additional roller door to front. Increases area by 24.30m<sup>2</sup>. Increases width by 3600mm.



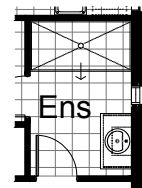
**OPTION LD1**

Provide Laundry upgrade with laminated insert trough, 2no. 800mm base cupboards, 1no. 400mm base cupboard, 2no. 800mm overhead cupboards, 1no. 400mm overhead cupboard and additional tiled splash back and bench top to suit.



**OPTION ENS1**

Provide Ensuite upgrade with wall to wall tiled shower base in lieu of standard 900mm x 900mm tiled shower base.



**OPTION IP1**

Provide Jetmaster SL-350 gas fireplace, 400mm off floor level in a 1400mm x 420mm boxed out plaster wall with a 4 sided black fascia to Family room rear wall including additional 2no. 2057mm x 1210mm aluminium sliding windows in lieu of standard 2no. 2057mm x 1810mm windows.

