

REESE 256

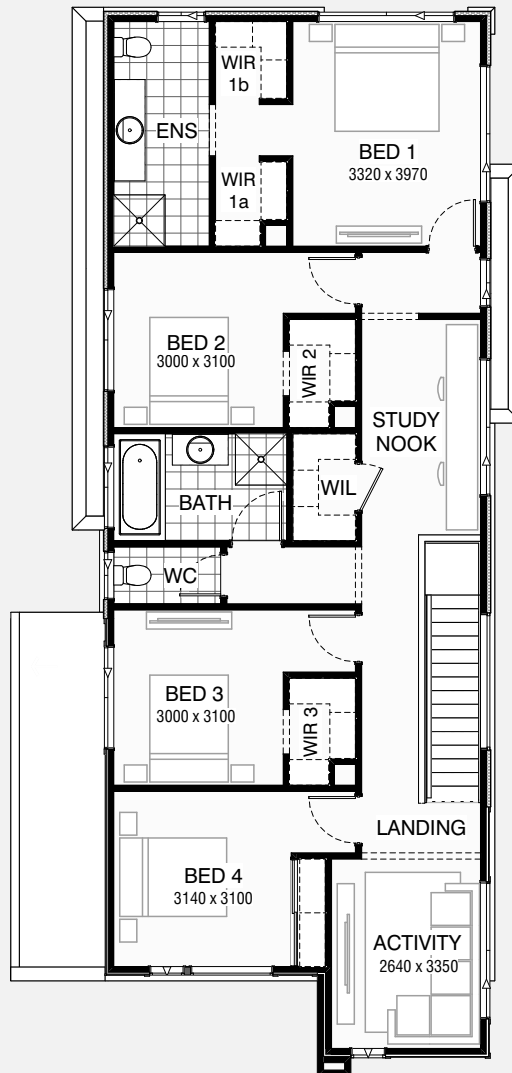
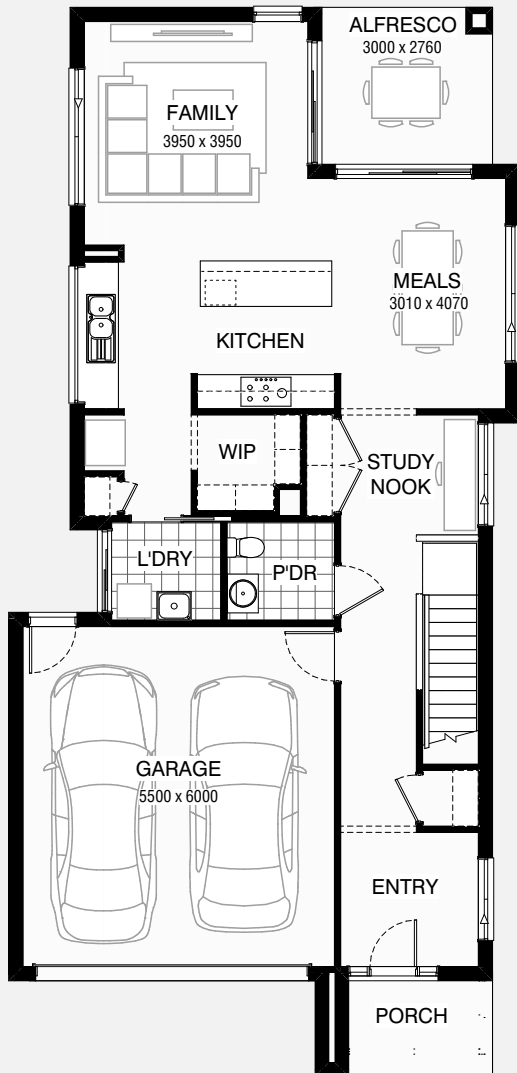
4 2.5 2

Total squares 277sq

B
SERIES

Minimum
Lot Width
10.5m

Minimum
Lot Length
25.0m



Design Dimensions
8,990mm(W) x 18,880mm(L).

Facade Choices
Fullerton, Huntington, Moorpark,
Oakwood, Pallsades, Redlands, Riverside.
Details based on Riverside façade floorplan (illustrated)

DESIGN DIMENSIONS

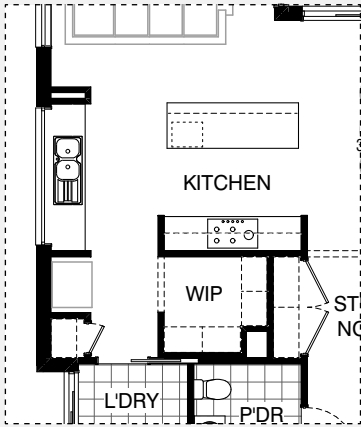
Residence	208.6m ²	22.4sq
Garage	36.2m ²	3.9sq
Porch	4.3m ²	0.5sq
Alfresco	8.3m ²	0.9sq
Total	257.4m²	27.7sq

Burbank

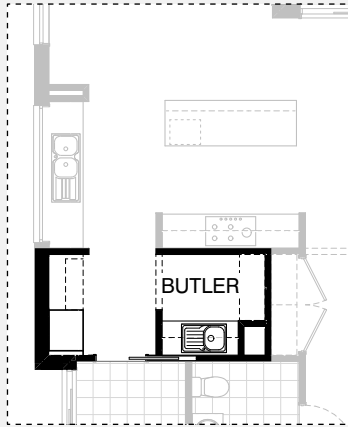
*Copyright conditions. All photos and illustrations are representative only. Floor plans and specifications may be varied by Burbank without notice, the dimensions are diagrammatic only and a Building Contract with final drawings will display correct dimensions and detail. All designs are the property of Burbank and must not be used, reproduced, copied or varied, wholly or in part without written permission from an authorised Burbank representative. Copyright Burbank Australia Pty Ltd. ABN 91 007 099 872. Builders Registration Number CDB-U-52603.



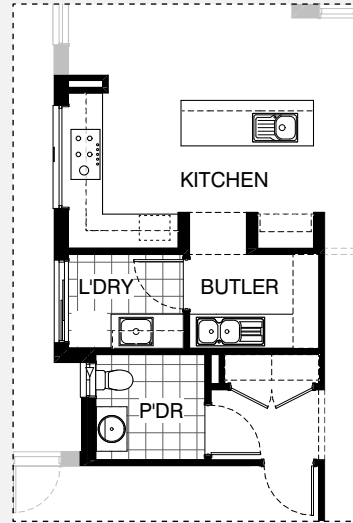
KITCHEN OPTIONS



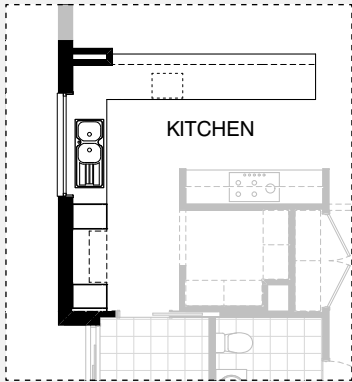
Master Kitchen Design



K01

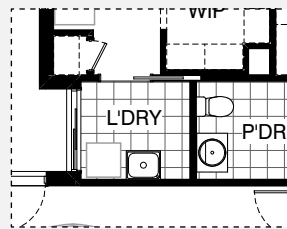


K02



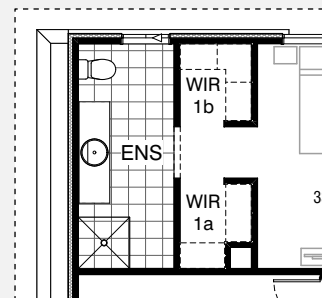
K03

LAUNDRY OPTION

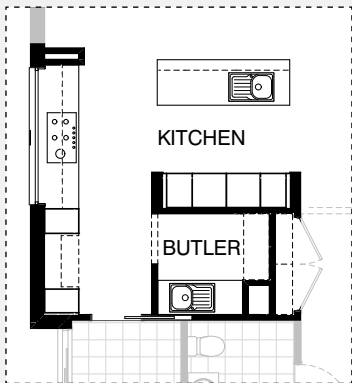


Master Laundry Design

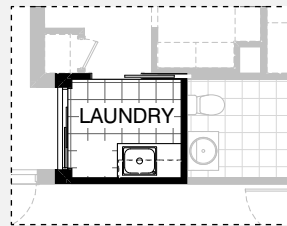
ENSUITE OPTIONS



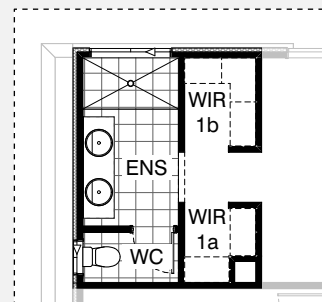
Master Ensuite Design



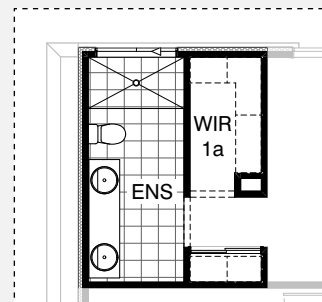
K04



LD01



EN01

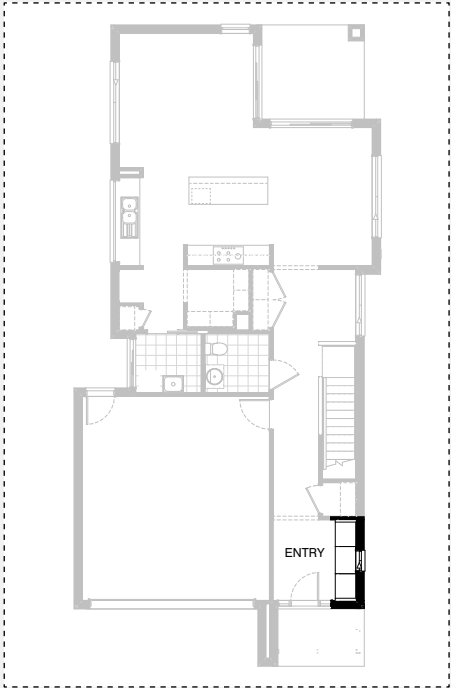


EN02

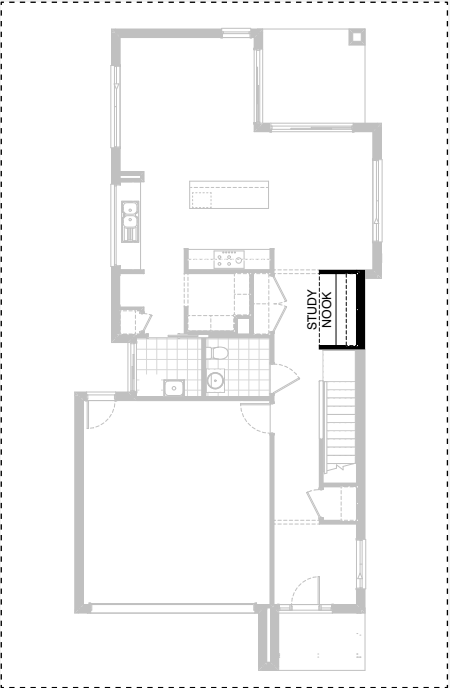


INTERNAL OPTIONS

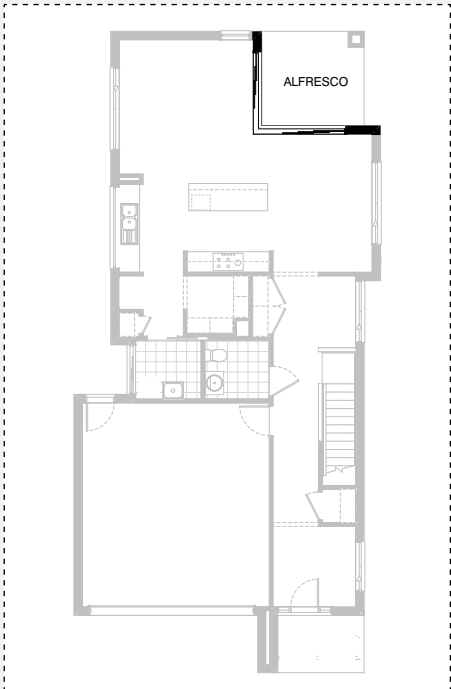
IN01



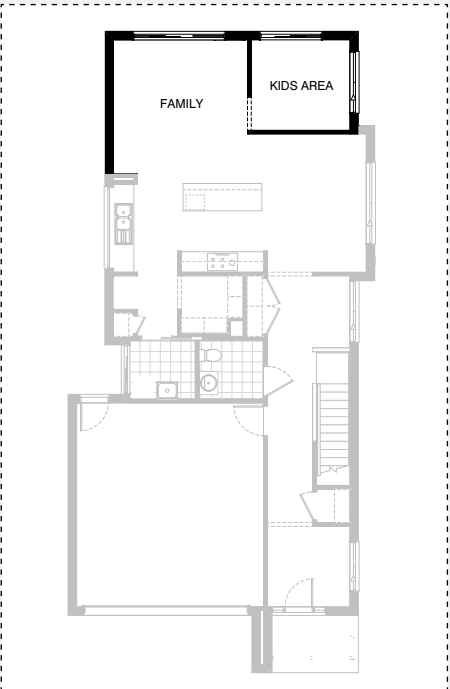
IN02



IN03



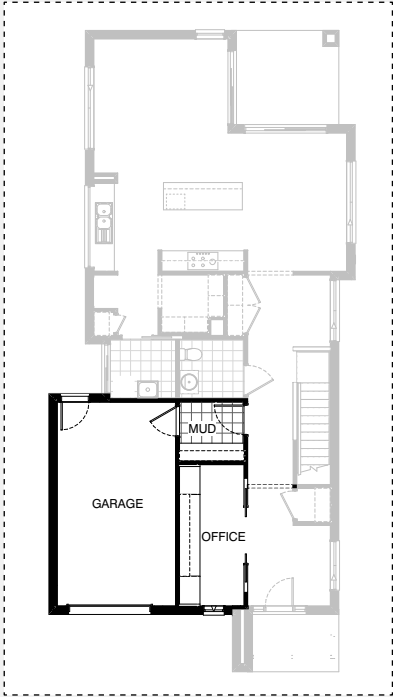
IN04



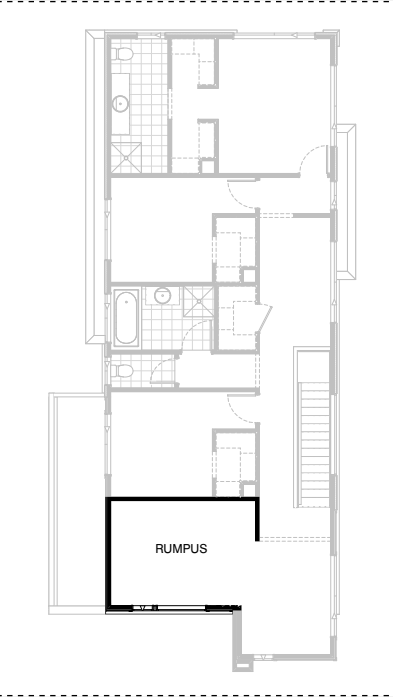


INTERNAL OPTIONS

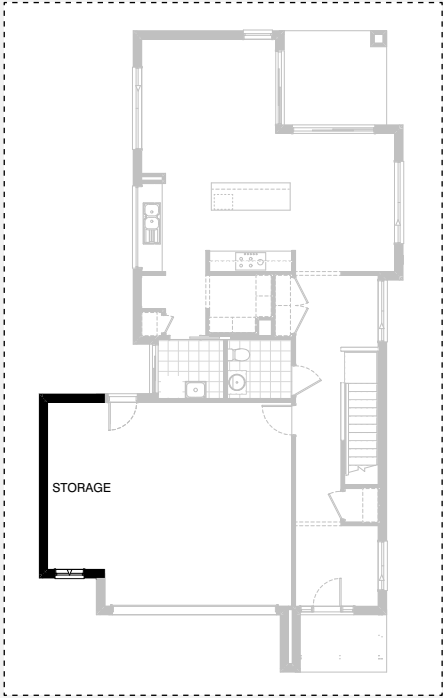
IN05



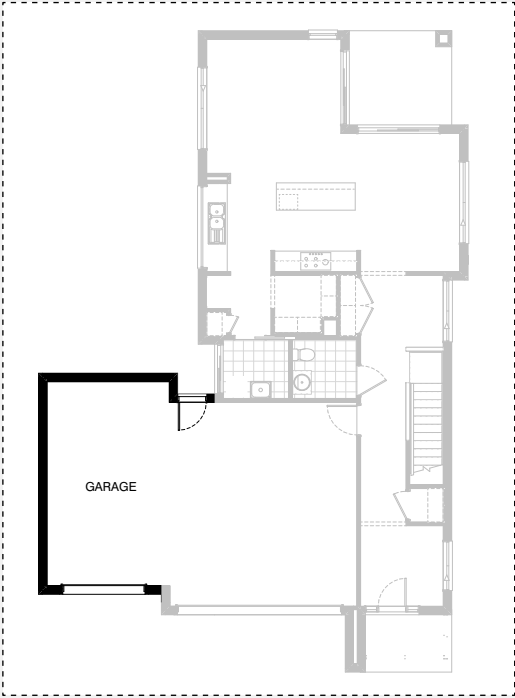
IN06



G01



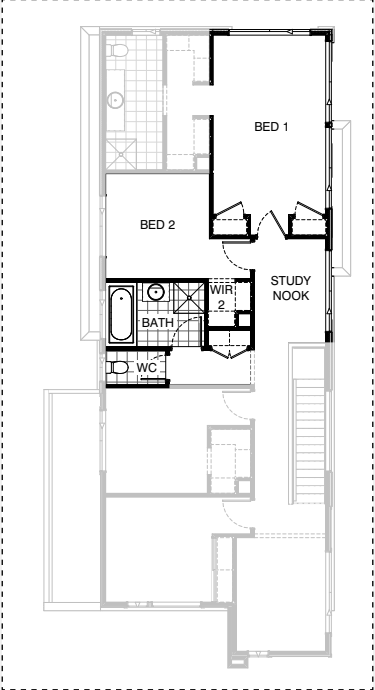
G02



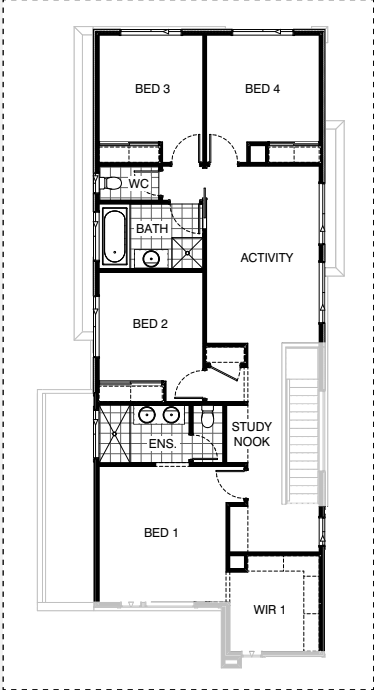


INTERNAL OPTIONS

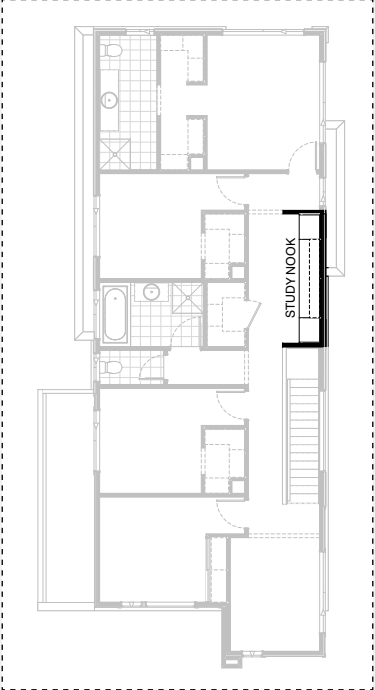
IN07



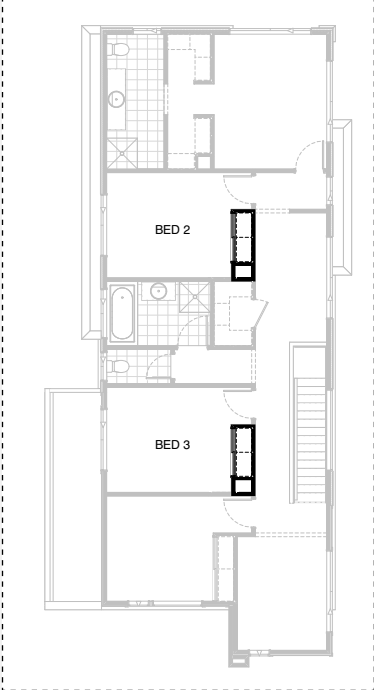
IN08



IN09

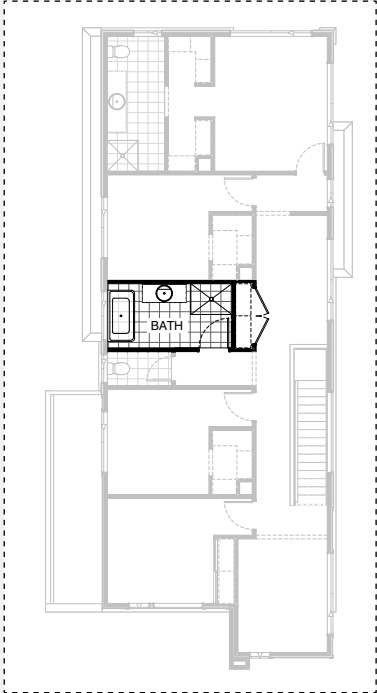


IN10

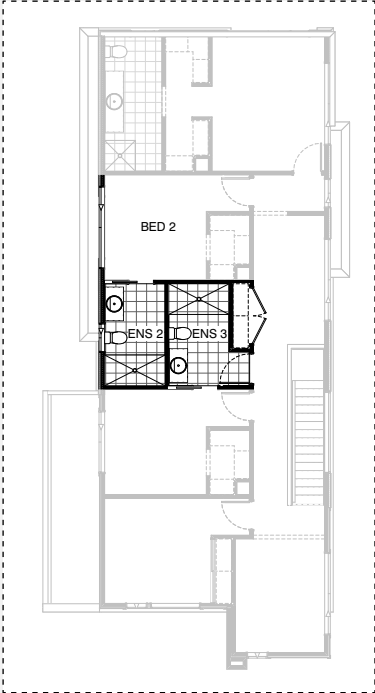


INTERNAL OPTIONS

IN11



IN12



REESE 256

OPTION DESCRIPTIONS

Kitchen Option 01

Provide Butler's Pantry in lieu of Walk-in Pantry, including: 20mm stone benchtop with single bowl sink, 1No. 800mm base cupboard, 1No. 450mm base cupboard, 1No. 800mm overhead cupboard, 1No. 450mm overhead cupboard, 1No. open shelf over Ref space, 1No. 700mm full height laminate cupboard, 5No. 450mm shelves.

Kitchen Option 02

Provide Kitchen upgrade option with L-shaped benchtop, Butler's Pantry and relocated Ref space. Kitchen includes:

20mm stone benchtop, single bowl sink, 1No. 900mm retractable rangehood, 1No. 900mm under bench oven and cooktop, 1No. 450mm drawer unit, 1No. microwave provision with pot drawer, 2No. 900mm base cupboards, 2No. 600mm base cupboards, 1No. corner blind cupboard with 600mm door, 4No. 600mm overhead cupboards, 1No. 600mm corner overhead cupboard with bi-fold door, 1No. open shelf over Ref space. 514mm x 1810mm Aluminium fixed window behind cooker in lieu of standard,

Butler's Pantry includes:

20mm stone benchtop, double bowl sink, 1No. 900mm base cupboard, 1No. dishwasher provision, 1No. 150mm wine rack, 450mm deep laminate open shelf unit.

Laundry includes:

1No. 870mm hinged door, 32mm laminated benchtop, stainless steel inset trough, 1No. 800mm base cupboard, 1No. 800mm overhead cupboard, 1No. 400mm base cupboard, 1No. 400mm overhead cupboard, Provide built-in Linen cupboard to Passage with 2No. 720mm hinged doors and 4No. 450mm shelves. Provide 1027mm x 610mm Aluminium sliding window to new Powder.

Kitchen Option 03

Provide L-shaped Kitchen upgrade option, including: 3No. 900mm base cupboards, 1No. 450mm base cupboard, 1No. 900mm corner base cupboard with bi-fold doors, 1No. 450mm drawer unit, 1No. dishwasher provision, 1No. microwave provision with pot drawer, 1No. open shelf over Ref space, 2No. 400mm full height laminate cupboards, additional benchtop and tiled splashback to suit. Provide 1200mm x 1810mm Aluminium fixed window behind sink in lieu of standard.

Note: Joinery to cooker elevation to remain unchanged.

Kitchen Option 04

Provide 3-way Kitchen upgrade option with relocated cook top and built-in joinery. Kitchen includes:

1No. 900mm retractable rangehood, 1No. 900mm cooktop, 1No. 450mm drawer unit, 2No. 600mm oven towers with microwave provisions, 3No. 900mm base cupboard, 2No. 800mm base cupboards, 2No. 800mm overhead cupboards, 2No. 450mm full height laminate cupboards, 2No. 400mm full height laminate cupboards, 1No. open shelf over Ref space, 514mm x 2410mm Aluminium fixed window over cook top. Butler's Pantry includes: 600mm deep 20mm stone benchtop with single bowl sink, 1No. 800mm base cupboard, 1No. dishwasher provision, tiled splashback to suit, 4No. 450mm shelves. Linen shelf changes to 300mm deep in lieu of standard.

Laundry Option 01

Provide Laundry upgrade with laminate base and overhead cupboards and stainless steel inset trough, including: 1No. 700mm base cupboard, 1No. 350mm base cupboard, 1No. 700mm overhead cupboard, 1No. 350mm overhead cupboard, 32mm laminate benchtop and tiled splashback to suit.

Internal Option 01

Provide built-in joinery option to the Entry, including:

2No. 700mm full height laminate cupboards, 600mm deep, 32mm thick laminate benchtop, 1No. 800mm drawer unit beneath benchtop, 1200mm x 610mm Aluminium sliding window in lieu of standard.

Internal Option 02

Provide built-in joinery to ground floor Study Nook, including: 600mm deep 32mm thick laminate benchtop, 1No. 450mm wide drawer unit beneath benchtop, 2No. 300mm deep 60mm thick open shelves over. Remove 514mm x 1810mm Aluminium sliding window and provide full height wall in lieu of dwarf wall.

Internal Option 03

Provide Aluminium Corner Stacker Door 2107mm - 2710mm x 2410mm in lieu of 2No. standard sliding doors. Provide lightweight (EPS) cladding infill over new corner sliding door in lieu of brickwork.

Note: Include in pricing, 2No. 89x89mm steel posts with steel beam in the floor space as designed by engineer.

Internal Option 04

Provide Kids Area in lieu of Alfresco, including:

Additional stud and plaster walls, Aluminium Sliding Door 2110mm x 2690mm and 2110mm x 1810mm Aluminium sliding door in lieu of standard, 1027mm x 1810mm Aluminium sliding window

Internal Option 05

Provide Home Office/Mud room option with Single car Garage in lieu of Double Garage, including:

Tiled Mud room with 870mm hinged door, 600mm deep 32mm thick benchtop 2No. 900mm base cupboards, 2No. 300mm deep 60mm thick open shelves over bench.

Home Office built-in joinery includes:

1No. 600mm deep 32mm thick laminate desk, 2No. 800mm full height laminate Storage cupboards, 2No. 300mm deep 60mm thick open shelves over desk, 2No. 820mm bi-parting cavity sliding doors, 1No. 2057mm x 610mm Aluminium awning feature window. Provide 1No. 2410mm wide Garage door to new single Garage in lieu of standard

Note: Entry bulkhead relocated to suit Office doors, 2590mm ceiling height to garage to Office and Mud Room

Internal Option 06

Provide Rumpus to first floor in lieu of Bed 4. Remove stud and plaster wall, hinged access door and built-in Robe with sliding doors as shown.

Internal Option 07

Provide floor plan option which increases the size of Bed 1, reduces size of Study Nook, Bath and WC, and removes WIL. Provide 2No. built-in Robes to Bed 1 with 2No. 820mm hinged doors, 1No. 514mm x 2410mm additional Aluminium Sliding Window highlight window, relocate WIR2 and provide built-in Linen cupboard with 4No. 450mm shelves and 2No. 520mm hinged doors.

Note: Option not available with options Internal08, Internal09, Internal10 and Internal11

Internal Option 08

Provide floor plan option which moves Bed 1 to the front of the home, as shown. Walk in Robe 1 moved to front in lieu of Activity, Ensuite relocated behind Bed 1 and reconfigured with 1680mm x 900mm wall-to-wall tiled shower base, separate WC, Study nooks relocated to opposite stair, Activity relocated to previous study nook location, built-in robe to Bed 2 in lieu of walk in robe, Delete WIL and provide built-in Linen cupboard with 4No. 450mm shelves and 1No. 870mm hinged door. Bed 3 and Bed 4 to be located to rear with built-in robe to Bed 3 in lieu of walk in robe.

Internal Option 09

Provide built-in joinery to first floor Study Nook, including: 600mm deep 32mm thick laminate bench top desk, 2No. 700mm full height laminate cupboards, 2No. 300mm deep 60mm thick open shelves over desk.

Note: Delete 1200mm x 2410mm Aluminium Sliding Window to Nook



REESE 256

OPTION DESCRIPTIONS

Internal Option 10

Provide 2No. built-in Robes with sliding doors to Beds 2 and 3 in lieu of WIR's.

Internal Option 11

Provide Bathroom upgrade option, including: 1200mm x 900mm recessed tiled shower base, 1282mm vanity with single bowl, 1500mm back to wall freestanding bath. WIL is removed and provide built-in Linen cupboard with 4No. 450mm shelves and 2No. 820mm hinged doors in lieu of standard. Note: option not available with option Internal06

Internal Option 12

Provide 2No. Ensuites to Bedrooms 2 and 3 in lieu of Bathroom and WC. Each Ensuites includes:
1770mm x 900mm wall-to-wall tiled recessed tiled shower base, 982mm vanity with single basin, additional WC. Provide 1027mm x 850mm Aluminium Sliding Window to Ensuite 2 in lieu of standard. Provide 870mm hinged door and 720mm cavity sliding door to Ensuite 3/Bed 3 as shown. Remove Walk-in Linen and provide built-in Linen with 2No. 820mm hinged doors and 4No. 450mm shelves. Provide Aluminium sliding window 514mm x 2410mm to Bed 2 in-lieu of standard.

Garage Option 01

Provide extension to Garage to create additional Storage area including additional 2057mm x 850mm Feature aluminium awning window .
Increases width of the home by 1680mm.
Increases area of the home by 9.07m2

Garage Option 02

Provide extension to Garage to create Triple Car Garage including additional 2140mm x 2410mm garage door as per colour selection
Increases width of the home by 3600mm
Increases area of the home by 23.62m2
Note: Garage metal roof to be 2 degree pitch in lieu of standard

Ensuite Option 01

Provide Ensuite upgrade option with re-arranged layout, including:
1No. 1782mm vanity with double basins, 1680mm x 900mm wall-to-wall tiled shower base, 1No. 350mm x 1450mm Aluminium Sliding Window in-lieu of standard, Enclosed WC with 720mm hinged door and 1027mm x 610mm Aluminium Sliding Window.

Ensuite Option 02

Provide Ensuite upgrade option, including:
1No. 2082mm vanity with double basins, 1680mm x 900mm wall-to-wall tiled shower base, 1No. 350mm x 1450mm Aluminium Sliding Window in-lieu of standard, Relocated access to Ensuite with built-in Robe with sliding doors.

