


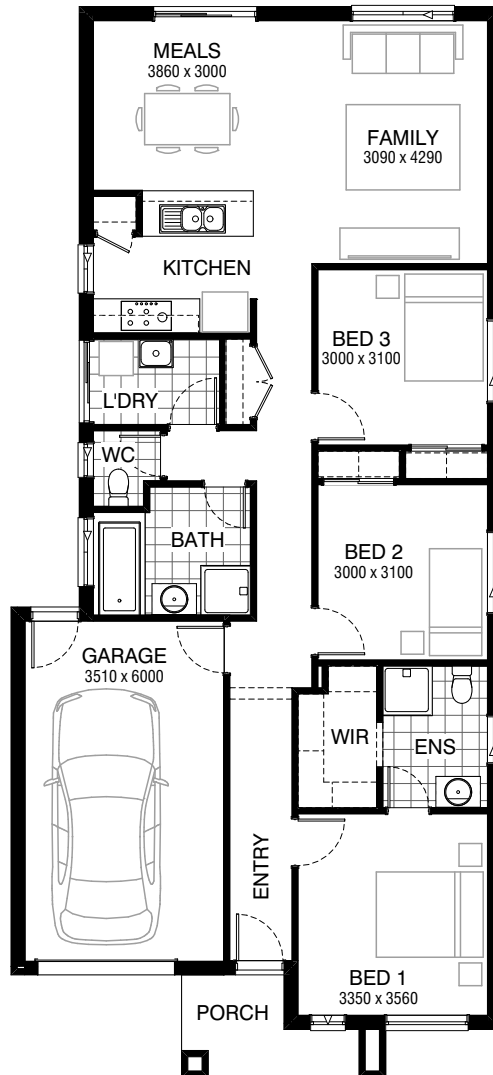


Total squares **15.4sq**

 **3**  **2**  **1**



**FLOORPLAN OPTIONS**

All available ready-to-go floorplan options for this design can be viewed on the following pages, or visit [www.burbank.com.au](http://www.burbank.com.au).

**Facades available:**

Drysdale, Arkley, Nolan	
Dowd, Haring	
<b>Overall home width</b>	<b>8.63m</b>
<b>Overall home length</b>	<b>18.83m</b>




Residence	114.3m <sup>2</sup>	12.3sq
Garage	23.7m <sup>2</sup>	2.6sq
Porch	4.7m <sup>2</sup>	0.5sq
<b>Total</b>	<b>142.7m<sup>2</sup></b>	<b>15.4sq</b>

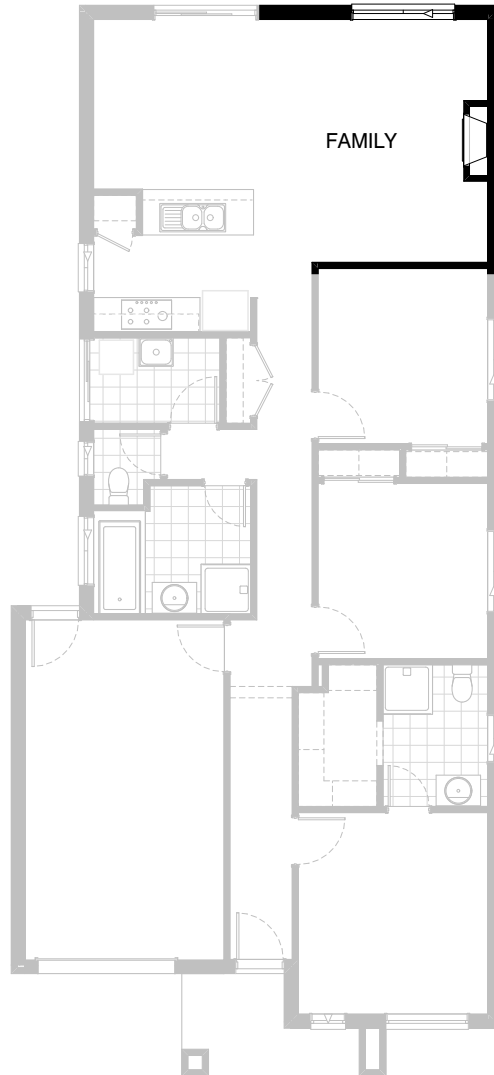
Listed details based on Drysdale façade floorplan (illustrated)

\*Copyright conditions. All photos and illustrations are representative only. Floor plans and specifications may be varied by Burbank without notice, the dimensions are diagrammatic only and a Building Contract with final drawings will display correct dimensions and detail. All designs are the property of Burbank and must not be used, reproduced, copied or varied, wholly or in part without written permission from an authorised Burbank representative. Copyright Burbank Australia Pty Ltd. ABN 91 007 099 872. Builders Registration Number CDB-U-52603.

**Call 13 BURBANK**  
**Visit [burbank.com.au](http://burbank.com.au)**

**FLOORPLAN OPTIONS**

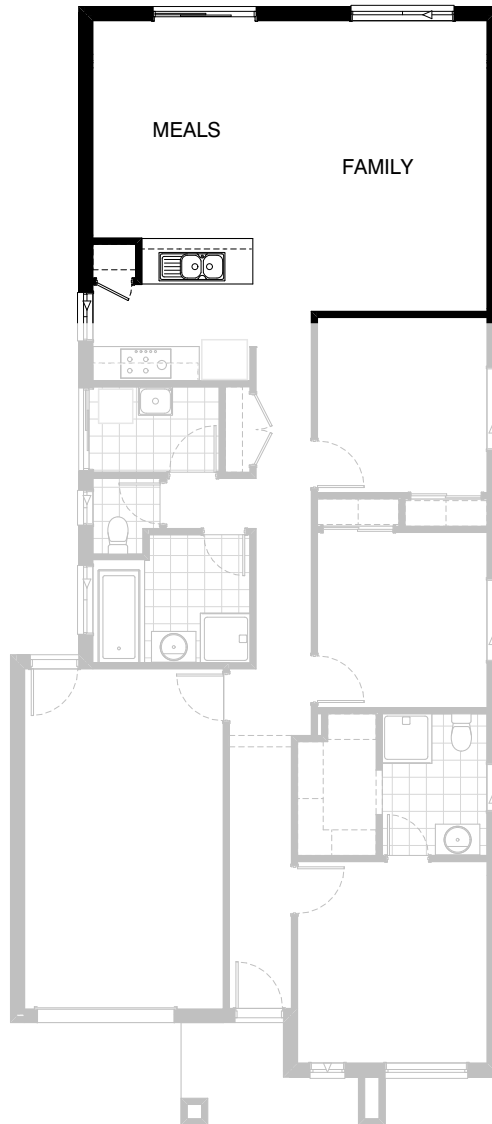
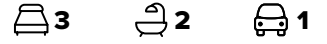
 **3**     **2**     **1**



**Option IP1-1**

Provide Jetmaster 3X series gas fireplace,  
400mm off floor level in a 1400mm x 420mm  
boxed out plaster wall with a 4 sided black  
fascia to Family room side wall.




**FLOORPLAN OPTIONS**

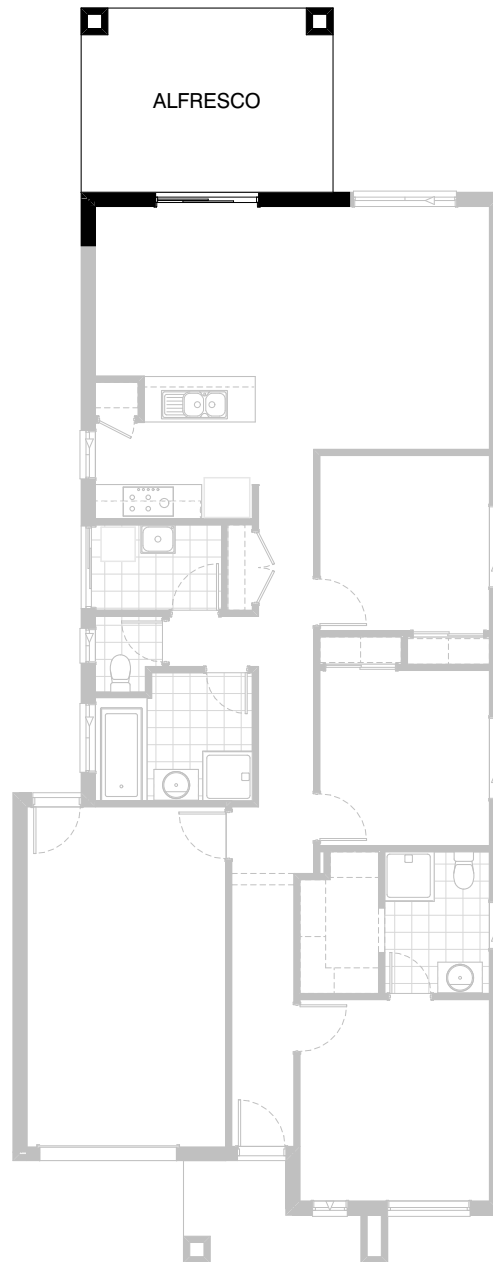


**Option EP1-1**

Extend Family and Meals area by 840mm  
to meet minimum 120m<sup>2</sup> house area.  
Increases area by 6.31m<sup>2</sup>.  
Increase length by 840mm.

**FLOORPLAN OPTIONS**




 **3**    **2**    **1**

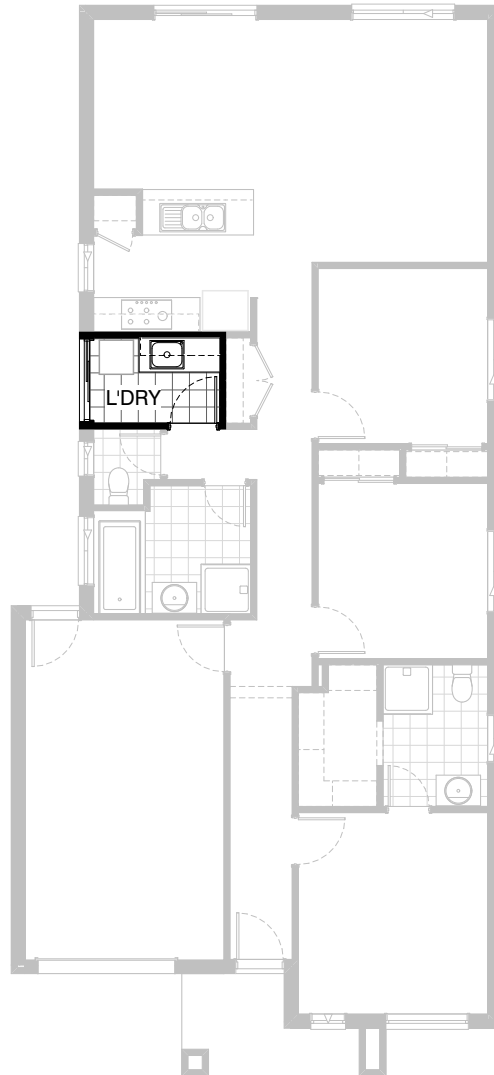


**Option EP1-2**

Provide Alfresco under dwelling roof line to rear of Family room including structural concrete floor, light point and 2no. 470mm x 470mm brick piers.  
Increases area by 14.35m<sup>2</sup>.  
Increases length by 3240mm.

**FLOORPLAN OPTIONS**




 **3**     **2**     **1**

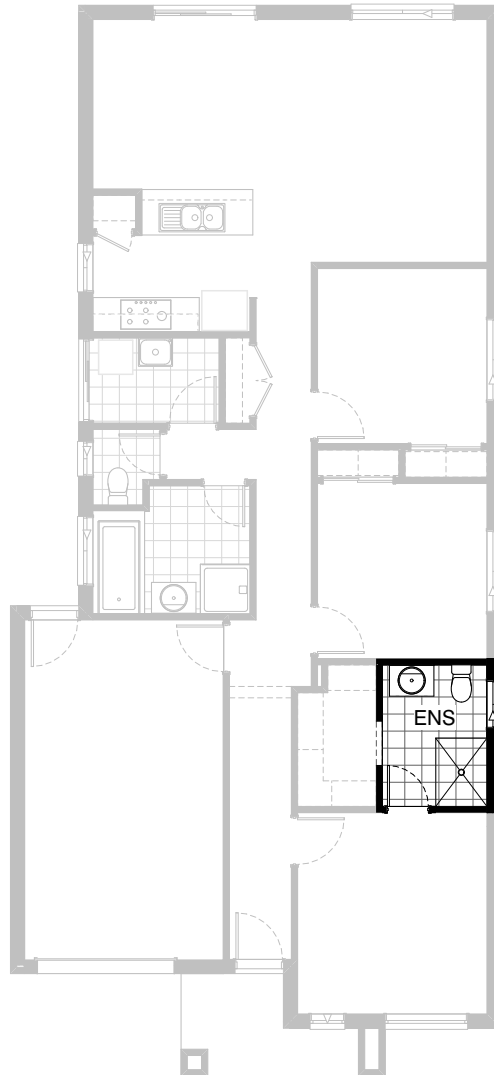


**Option LD-1**

Provide Laundry Upgrade including s.s. inset trough in 32mm laminated bench top, 1no. 900mm and 1no. 450mm base cabinets, 1no. 900mm and 1no. 450mm overhead cabinets, additional tiled splashback and bench top to suit.

**FLOORPLAN OPTIONS**

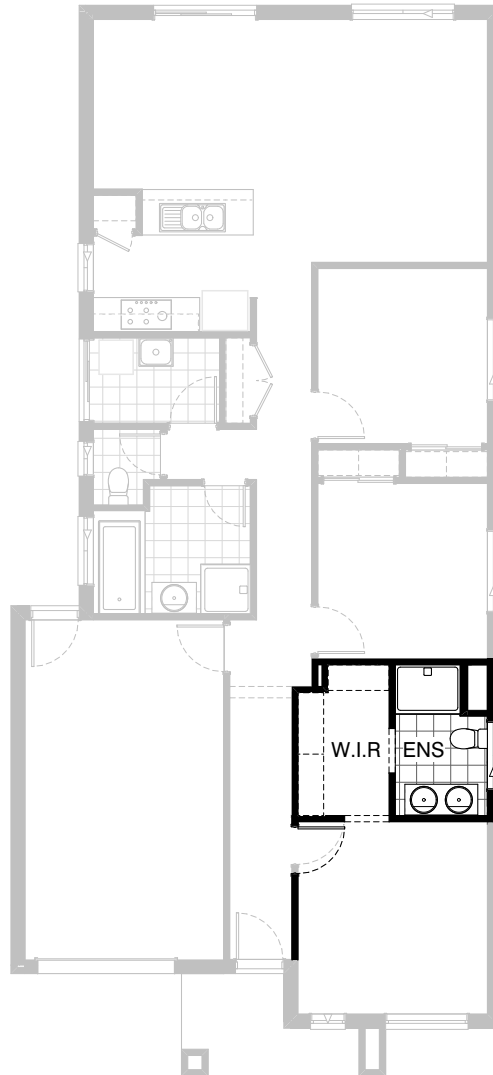
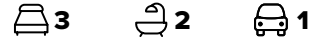
 **3**    **2**    **1**



**Option ENS-1**

Provide Ensuite Upgrade including  
1200mm x 900mm tile shower base  
and relocate window to suit.

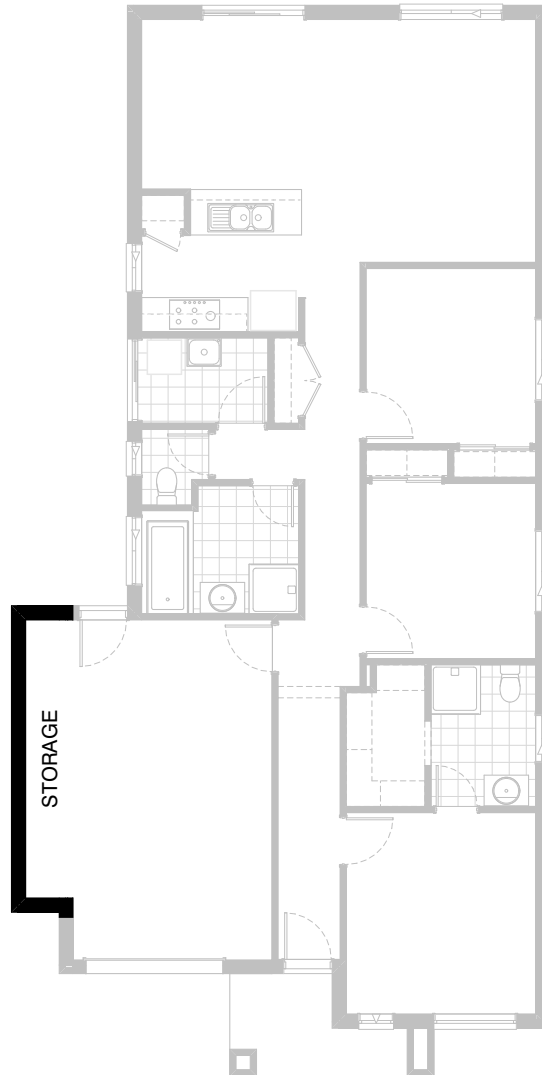
FLOORPLAN OPTIONS



### Option ENS-2

Provide Ensuite Option with additional 1no.  
1200mm x 900mm polymarble shower base,  
1no. 1282mm wide vanity unit with 2no. basins and  
1no. 1200mm x 1210mm aluminium sliding window.  
Increase Ensuite / W.I.R length by 160mm and decrease Bed 1 to suit.  
Increase W.I.R width by 220mm and decrease Ensuite to suit.  
Delete 1no. 720mm hinged door to Ensuite and provide  
1no. 800mm opening to suit.

**FLOORPLAN OPTIONS**






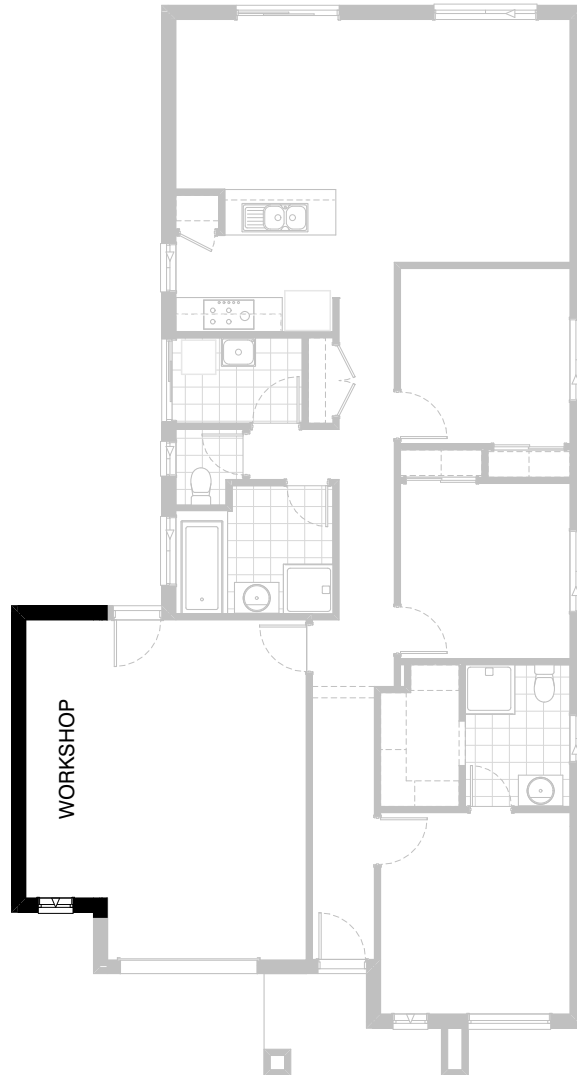
**Option G-1**

Provide extension to Garage to  
create additional Storage area.  
Increases area by 4.53m<sup>2</sup>.  
Increases width by 840mm.



**FLOORPLAN OPTIONS**




 **3**     **2**     **1**

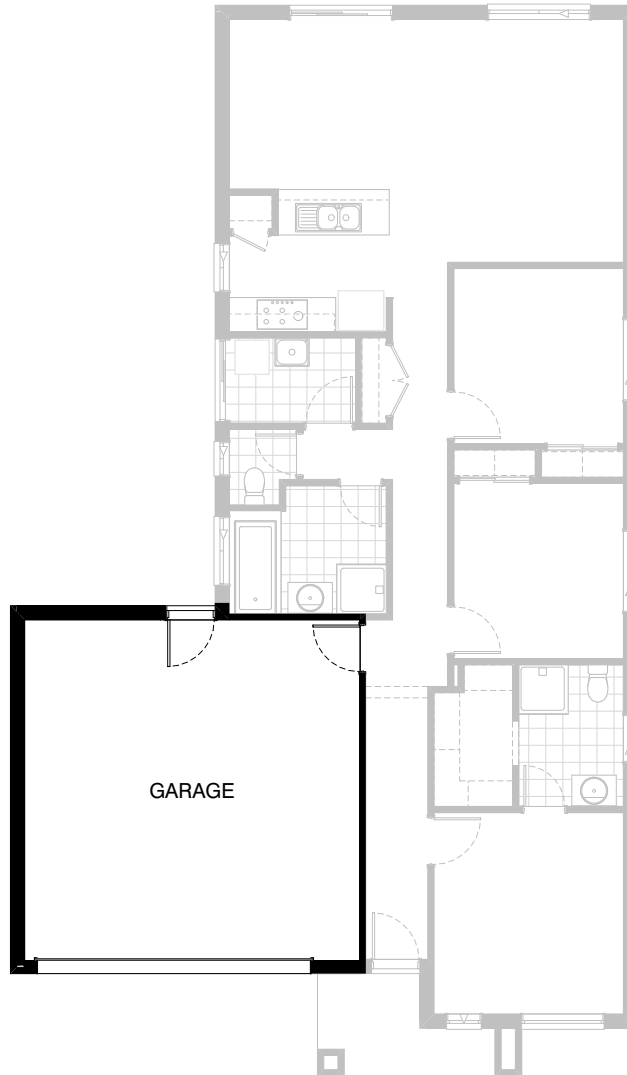


**Option G-2**

Provide extension to Garage to create Workshop area including additional 2057mm x 610mm aluminium awning window. Increases area by 7.76m<sup>2</sup>. Increases width by 1440mm.

**FLOORPLAN OPTIONS**

 **3**     **2**     **1**



**Option G-3**

Provide double car Garage including  
larger Garage door to suit.  
Increases area by 15.52m<sup>2</sup>.  
Increases width by 2400mm.