



**FLOORPLAN OPTIONS**

We personalise our floorplans. Talk to us about our huge range of ready-to-go design options.

**Facades available:**

Barrine, Mackay, Corella,	
Selina, McKenzie	
<b>Overall home width</b>	<b>11.99m</b>
<b>Overall home length</b>	<b>20.51m</b>

Residence	317.6m <sup>2</sup>	34.2sq
Garage	36.5m <sup>2</sup>	3.9sq
Porch	3.3m <sup>2</sup>	0.4sq
Alfresco	20.9m <sup>2</sup>	2.3sq
<b>Total</b>	<b>378.2m<sup>2</sup></b>	<b>40.7sq</b>

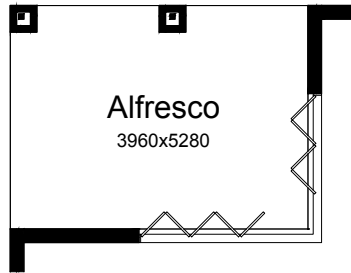
Listed details based on Barrine facade floorplan (illustrated)

\*Copyright conditions. All photos and illustrations are representative only. Floor plans and specifications may be varied by Burbank without notice, the dimensions are diagrammatic only and a Building Contract with final drawings will display correct dimensions and detail. All designs are the property of Burbank and must not be used, reproduced, copied or varied, wholly or in part without written permission from an authorised Burbank representative. Copyright Burbank Australia (NSW) Pty Ltd. ABN 88 610 822 770. NSW BL 295627C ACT BL 2016566.

**Call 13 BURBANK**  
**Visit [burbank.com.au](http://burbank.com.au)**

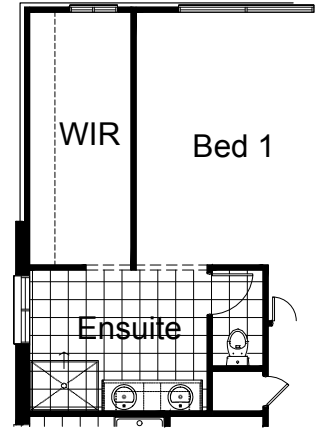
**OPTION IP1**

Provide 1no. 2400mm x 3010mm and 1no. 2400mm x 2410mm timber clear finish bi-fold doors to Family / Meals in lieu of standard.



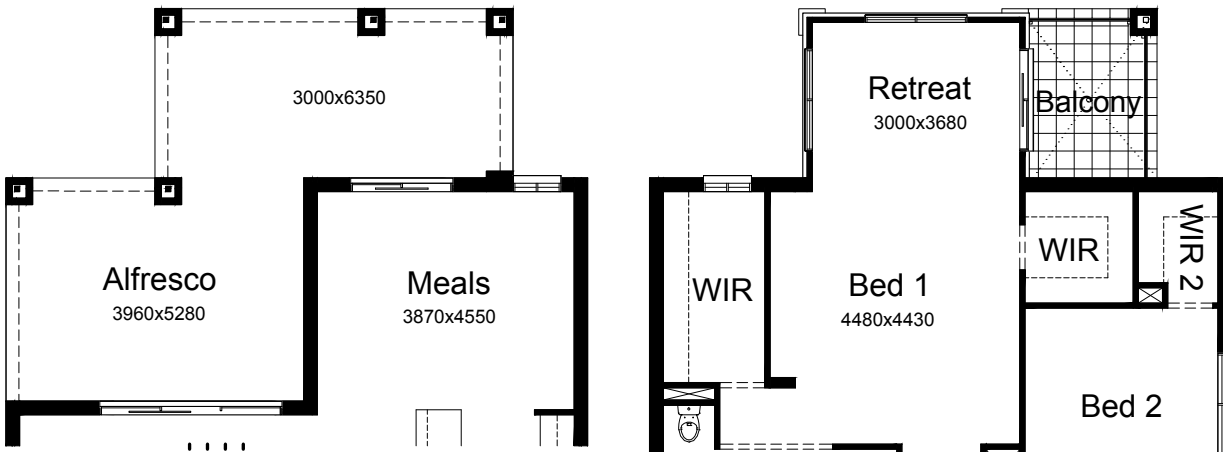
**OPTION IP3**

Provide alternative Ensuite layout by deleting bath with hob and provide plaster lined enclosed WC with 1no. 720mm flush panel hinged door, plaster lined Store room with 1no. 520mm flush panel hinged door with access via passage and increased walk-in robe including hanging rail and open shelf and adjust Bed 1 and WIR openings to suit. Provide 1200x900 tiled shower and double bowls to vanity.



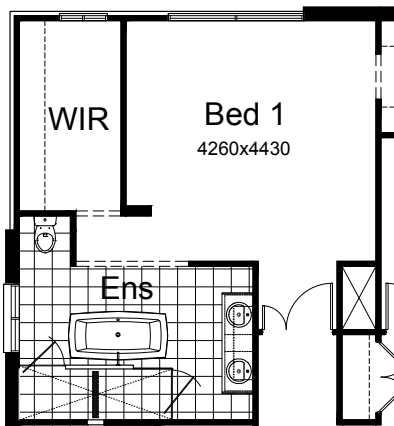
**OPTION EP1**

Provide extension to Alfresco adjoining Meals including. Retreat to Bed 1 and Balcony with stainless steel framed glass balustrading with roof over to first floor in lieu of standard. (Includes additional sliding door and window changes to suit). Increases area by 37.06m<sup>2</sup>. Increases length by 3000mm.



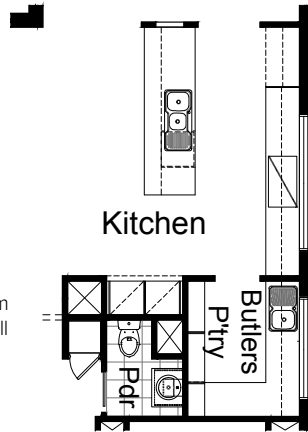
**OPTION IP2**

Provide Ensuite upgrade including freestanding bath with 300mm spout, 2700mm x 900mm tiled shower base with 2no. ceiling mounted shower roses, additional mixer tap, wall recess with 2no glass shelves, 2no frameless shower screens. Provide double bowls to vanity. Reduce Bed 1 by 220mm and extend Bed 1 void by 220mm and delete Bed 1 plaster nib wall to suit.



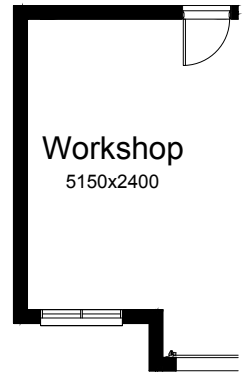
**OPTION K1**

Provide Kitchen / Butler Pantry re-design by reducing. Powder room and providing 1no. 720mm sliding door in lieu of standard, To KITCHEN - Provide 1no. 450mm drawer unit, 1no. DW provision, 3no. 900mm base cupboards, 1no open shelf above refrigerator space, 2no. 400mm base cupboards, 2no. 800mm base cupboards, 2no. 400mm overhead cupboards, 2no. 800mm overhead cupboards, Provide 900mm cooktop & retractable rangehood concealed within 900mm overhead cupboard. Provide 2no. laminated wall oven/MW towers, 1no. 480mm x 1020 plaster lined wall cut out with additional tiled splash back and 900mm wide bench top to suit. To BUTLERS PANTRY - Provide 1no. 900mm base cupboard with 1no. single bowl sink with drainer, bench top and tiled splashback to suit, 1no. 800mm base cupboard, 1no. 1050mm blind carcass base cupboard & 1no. 400mm base cupboard. Provide 1no. 900mm overhead cupboard, 1no. 800mm overhead cupboard & 1no. 450mm overhead cupboard with 1no. 514mm x 1810mm aluminum fixed window with no bottom reveal. 1800mm high open adjustable shelves.



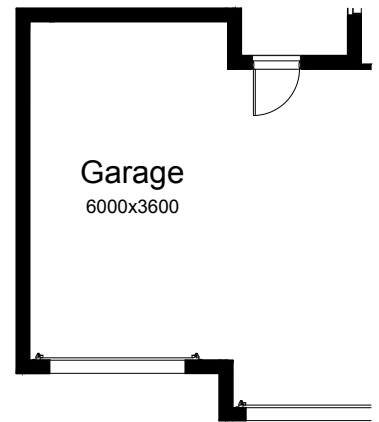
**OPTION G2**

Provide extension to Garage to create Workshop area including additional window to suit. (Option available to Facades with hip roof over Garage). Increases area by 13.51m<sup>2</sup>. Increases width by 2400mm.



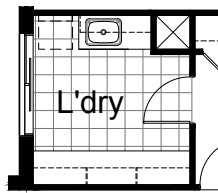
**OPTION G3**

Provide triple car Garage including additional roller door to front. (Option available to Facades with hip roof over Garage). Increases area by 23.61m<sup>2</sup>. Increases width by 3600mm.



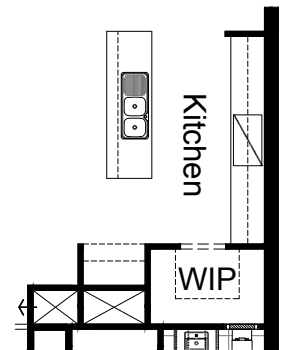
**OPTION LD1**

Provide Laundry upgrade including laminated insert trough, 1no. 400mm base cupboard, 1no. 800mm base cupboard, 3no. 900mm base cupboards, 1no. 400mm overhead cupboard, 1no. 800mm overhead cupboard, 2no. 900mm overhead cupboards and 1no. 900mm laminated open shelf with hanging rod and additional bench top and splash back to suit.



**OPTION K2**

Provide laminated open shelf above refrigerator space.



**OPTION G1**

Provide extension to Garage to create additional Storage area. (Option available to Facades with hip roof over Garage). Increases area by 4.58m<sup>2</sup>. Increases width by 850mm.



**OPTION IP4**

Provide Jetmaster SL-350 gas fireplace, 400mm off floor level in a 1400mm x 420mm boxed out plaster wall with a 4 sided black fascia to Family room side wall with 2no. 1800mm x 1450mm aluminium sliding windows in lieu of standard 1no. 1800mm x 2400mm window.

