

Facades available:

Eastwood, Harrogate, Kent	
Lancaster, Sheffield	
Swansea, Wiltshire	
Overall home width	12.47m
Overall home length	22.42m

Residence	181.36m ²	19.5sq
Garage	36.36m ²	3.91sq
Porch	4.77m ²	0.51sq
Alfresco	13.74m ²	1.48sq
Total	236.2m²	25.4sq

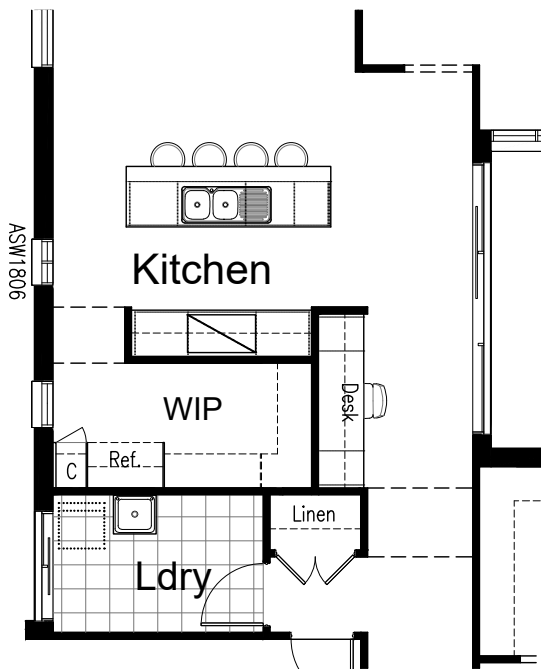
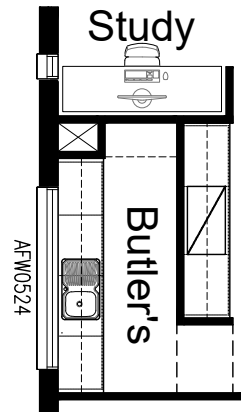
Listed details based on Sheffield facade floorplan (illustrated)

*Copyright conditions. All photos and illustrations are representative only. Floor plans and specifications may be varied by Burbank without notice, the dimensions are diagrammatic only and a Building Contract with final drawings will display correct dimensions and detail. All designs are the property of Burbank and must not be used, reproduced, copied or varied, wholly or in part without written permission from an authorised Burbank representative. Copyright Burbank Australia (SA) Pty Ltd. ABN 96 165 533 406. BLD 266709.

Call 13 BURBANK
Visit burbank.com.au

OPTION K1

Provide Kitchen upgrade with Butler's Pantry in lieu of Walk-in Pantry, including:
2No. 700mm base cabinets, 2No. 800mm base cabinets, 2No. 700mm overhead cabinets, 2No. 800mm overhead cabinets, single bowl inset sink with single drainer, additional benchtop and tiled splashback to suit, 4No. 450mm open shelves to end wall. Provide additional AFW0524 fixed window to Butler's Pantry. Remove AFW1806 fixed window.

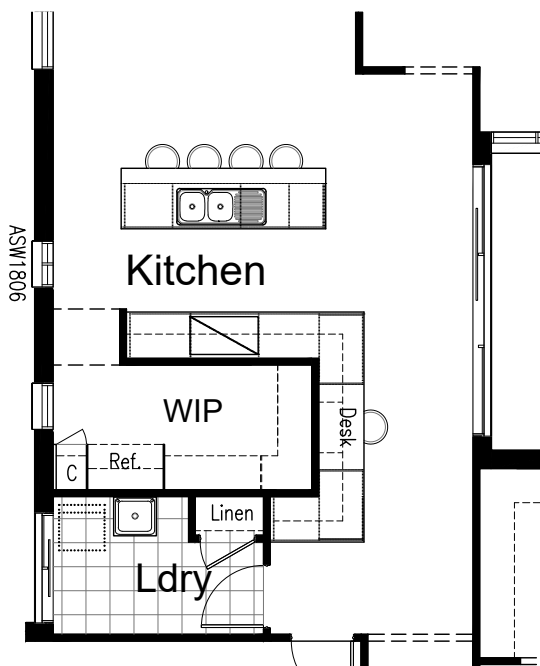


OPTION K2

Provide Kitchen upgrade option which rotates the Kitchen benches to face the Meals and relocates Study Nook to face the Alfresco.

Kitchen includes:
900mm retractable rangehood, 900mm cooktop, 900mm under bench oven, relocated refrigerator space with 2No. laminate side panels and open shelf above, 1No. 400mm full height laminate cabinet with 5No. 450mm shelves, 2No. 700mm base cupboards, 2No. 700mm overhead cupboards, 4No. 450mm shelves to WIP, provide additional ASW1806 sliding window, Laundry is reduced by 200mm in length and 370mm in depth to accommodate, Linen to Passage has 2No. 520mm hinged doors in lieu of standard. Cabinetry to Island bench to remain unchanged.

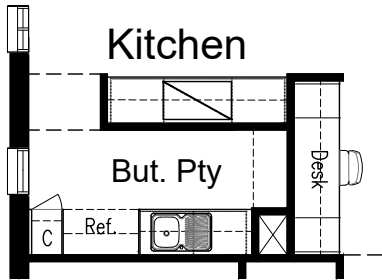
Study includes:
600mm deep 32mm thick laminate desk top, 2No. 450mm drawers below desk, 2No. 60mm thick 300mm deep open shelves over desk.
Remove AFW1203 fixed window.



OPTION K3

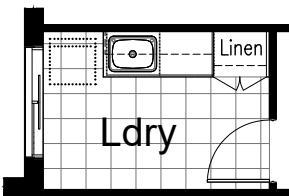
Provide Kitchen upgrade option which rotates the Kitchen benches to face the Meals and the cabinetry wraps around to incorporate a Study Nook to face the Alfresco.

Kitchen includes:
900mm retractable rangehood, 900mm cooktop, 900mm under bench oven, relocated refrigerator space with 2No. laminate side panels and open shelf above, 1No. 400mm full height laminate cabinet with 5No. 450mm shelves, 2No. 900mm base cupboards, 2No. 800mm base cupboards, 1No. 600mm base cupboard, 2No. 900mm overhead cupboards, 2No. 800mm overhead cupboards, 1No. 600mm overhead cupboard, 1No. 646mm open shelf unit overhead, 4No. 450mm shelves to WIP, provide additional ASW1806 sliding window, provide additional benchtop and tiled splashback to suit, Laundry is reduced by 200mm in length and 370mm in depth to accommodate, Linen to Passage is relocated into Laundry with 720mm hinged door and 4No. 450mm shelves. Cabinetry to Island bench to remain unchanged. Remove AFW1203 fixed window.



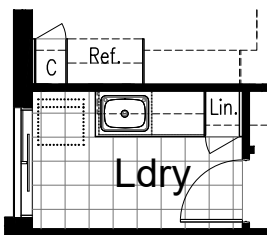
OPTION K4

Provide Kitchen upgrade with Butler's Pantry in lieu of Walk-in Pantry, including:
2No. 700mm base cabinets, 2No. 700mm overhead cabinets, single bowl inset sink with single drainer, additional benchtop and tiled splashback to suit 4No. 450mm open shelves to end wall.
Note: option only available in conjunction with Options K2 or K3



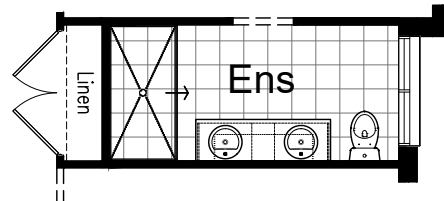
OPTION LD1

Provide Laundry upgrade including laminate base and overhead cupboards and stainless steel inset trough including:
2No. 700mm base cupboard, 2No. 700mm overhead cupboards, 1No. 700mm full-height laminated cabinet with 5No. 450mm shelves, additional bench top and tiled splashback to suit.
Note: option not available in conjunction with Options K2 or K3



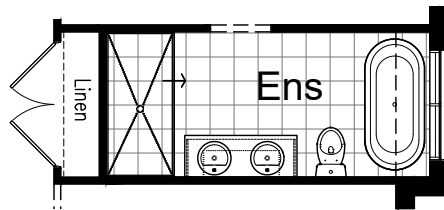
OPTION LD2

Provide Laundry upgrade including laminate base and overhead cupboards and stainless steel inset trough including:
2No. 700mm base cupboard, 2No. 700mm overhead cupboards, 1No. 450mm full-height laminated cabinet with 5No. 450mm shelves, additional bench top and tiled splashback to suit.
Note: option only available in conjunction with Options K2 or K3



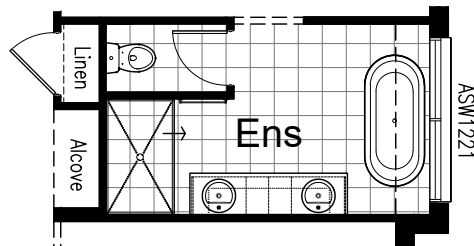
OPTION ENS1

Provide Ensuite upgrade option including:
900x1800mm tiled shower base, 1782mm wide vanity with double basins, WIL changed to standard built-in Linen closet with 2No. 820mm hinged doors and 4No. 450mm shelves.



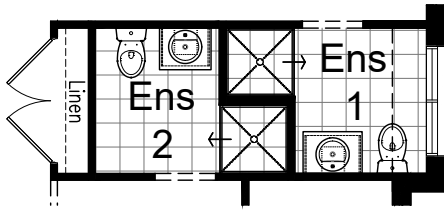
OPTION ENS2

Provide Ensuite upgrade option with rearranged layout including:
900x1920mm tiled shower base, 1482mm wide vanity with double basins, freestanding bath, WIL changed to standard built-in Linen closet with 2No. 820mm hinged doors and 4No. 450mm shelves.
Floor area of house increased by 0.95 sqm.



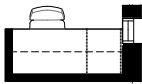
OPTION ENS3

Provide Ensuite upgrade option with rearranged layout including:
900x1530mm tiled shower base, 2082mm wide vanity with double basins, freestanding bath, enclosed WC with 720mm hinged door, WIL changed to standard built-in Linen closet with 1No. 820mm hinged door and 4No. 450mm shelves, Alcove to Entry Passage with bulkhead over, provide ASW1221 sliding window in lieu of standard. Option takes 600mm of depth from Living to accommodate. Floor area of house increased by 1.17 sqm.
Note: option not available in conjunction with options IP6 or IP7.



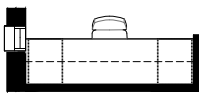
OPTION ENS4

Provide alternate Ensuite layout to Bed 1 and Guest Bed including: 2No. 900x900mm tiled shower bases, 2No. 682mm wide vanities with single basin, 2No. relocated WC, WIL changed to standard built-in Linen closet with 2No. 820mm hinged doors and 4No. 450mm shelves. Pack-out wall between showers by 30mm.
Note: option only available in conjunction with Option IP4



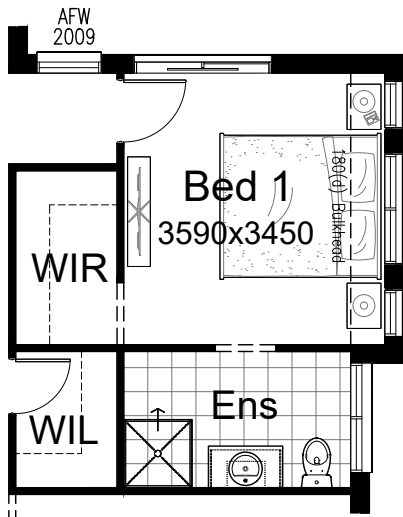
OPTION IP1

Provide built-in joinery option to Bedrooms 2 and 3 including: 600mm deep 32mm thick laminate desk top, 2No. 300mm deep 60mm thick laminate open shelves over, 1No. 450mm drawer unit below desk.



OPTION IP2

Provide built-in joinery option to Study Nook including: 600mm deep 32mm thick laminate desk top, 2No. 300mm deep 60mm thick laminate open shelves over, 2No. 450mm drawer units below desk.

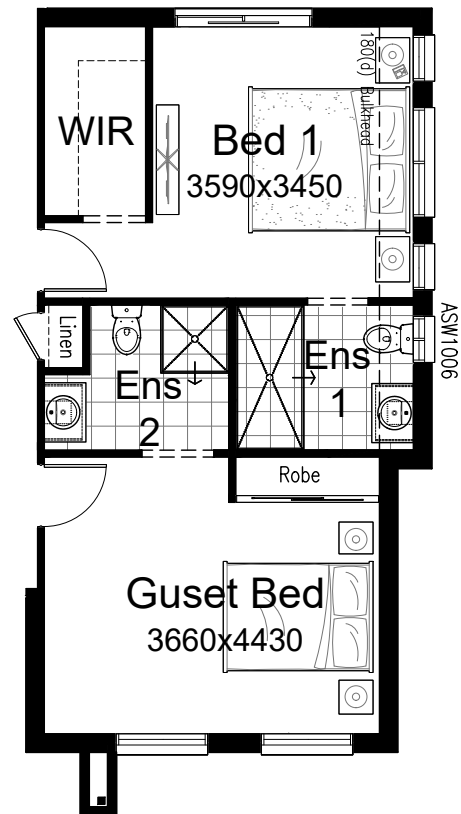


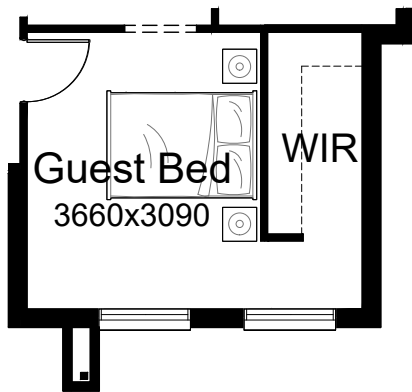
OPTION IP3

Provide alternate layout for Walk-in Robe and access to Bed 1, including: relocated 820mm hinged door to Bed 1, rearranged layout to Walk-in Robe, provide additional AFW2009 fixed window.

OPTION IP4

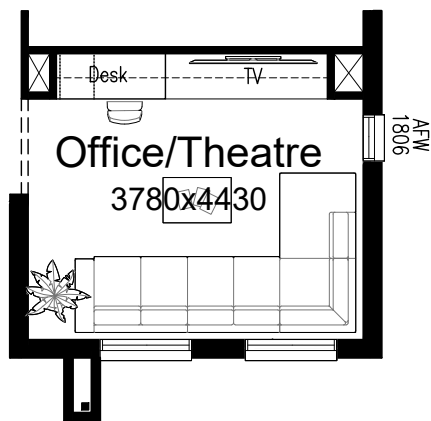
Provide Guest Bedroom to the front of the home in lieu of Living with rearranged Ensuite layout to Bed 1 and built-in Robe to new Guest Bed with sliding doors. Bed 1 Ensuite includes: 900x1920mm tiled shower base, 782mm vanity with single basin, relocated WC, provide ASW1006 in lieu of standard. Guest Bed Ensuite includes: 900x900mm tiled shower base, 782mm vanity with single basin, WC. WIL changed to standard built-in Linen closet with 1No. 620mm hinged door and 4No. 450mm shelves. Floor area increased by 0.95 sqm





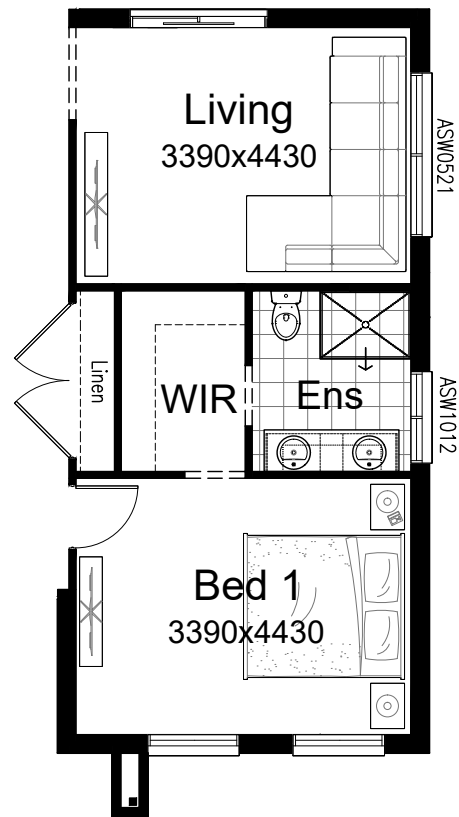
OPTION IP5

Provide Walk-in Robe with 450mm shelf and hanging rail to Guest Bedroom in lieu standard built-n Robe.
Note: option only available in conjunction with Option IP4.



OPTION IP7

Provide Home Office/Theatre option in lieu of Living to the front of the home. Provide built-in joinery including: 600mm deep 32mm thick laminate desk with waterfall end, 1No. 450mm drawer unit below desk, 600mm deep 32mm thick laminate bench top with 3No. 700mm tv unit base cupboards, 4No. 700mm overhead cupboards, 1No. 700mm overhead open shelf unit. Provide additional AFW1806 fixed window



OPTION IP6

Provide floor plan option which swaps the locations of Bed 1 and Living putting Bed 1 to the front of the home. Ensuite to Bed 1 is rearranged including: 900x1200mm tiled shower base, 1782mm vanity with double basins, WC, provide ASW1012 sliding window to Ensuite in lieu of standard. Provide ASW1021 window to new Living in lieu of standard. WIL changed to standard built-in Linen closet with 2No. 820mm hinged doors and 4No. 450mm shelves. Floor area reduced by 1.83 sqm
Note: option could be reversed to provide standard locations of Bed 1 and Living with rearranged Ensuite, Walk-in Robe and Linen layout.

OPTION IP8

Provide Kitchen option which provides Home Office in lieu of Walk-in Pantry and Study Nook.

Kitchen includes:

900mm retractable rangehood, 900mm cooktop, 900mm under bench oven, open shelf over Ref space, 2No. 800mm base cupboards, 2No. 400mm base cupboards, 2No. 800mm overhead cupboards, 2No. 400mm overhead cupboards, 2No. 600mm full height laminate Pantry cupboards with 5No. 450mm shelves, additional benchtop and tiled splashback to suit. Island bench cabinetry remains unchanged.

Built-in joinery to Home Office includes:

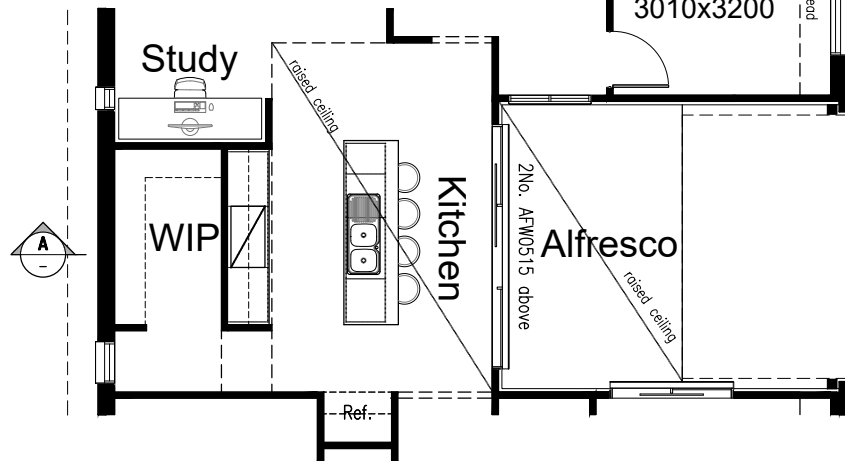
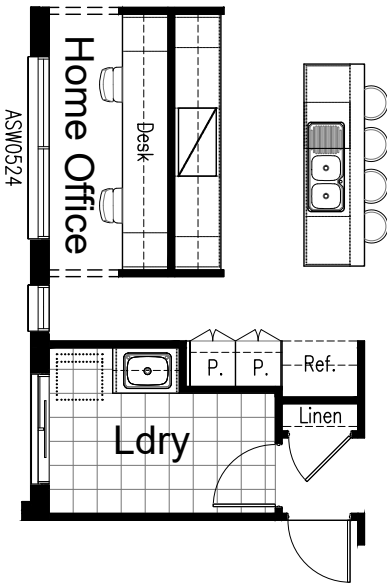
600mm deep 32mm thick laminate desk top, 2No. 450mm laminate open shelf units, 2No. 300mm deep 60mm thick laminate open shelves over, 2No. 450mm drawer units below desk.

Laundry includes:

laminated base and overhead cupboards and stainless steel inset trough, 1No. 800mm base cupboard, 1No. 700mm overhead cupboard, additional bench top and tiled splashback to suit.

Provide additional ASW0524 sliding window to Home Office Remove AFW1203.

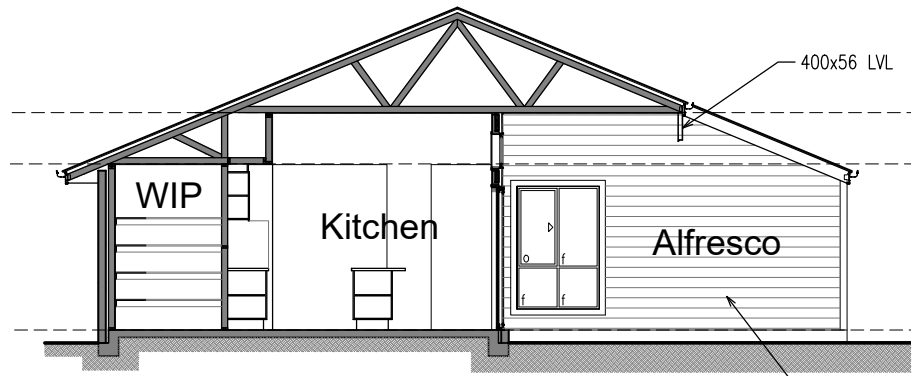
Area of Laundry reduced by 0.76 sqm.

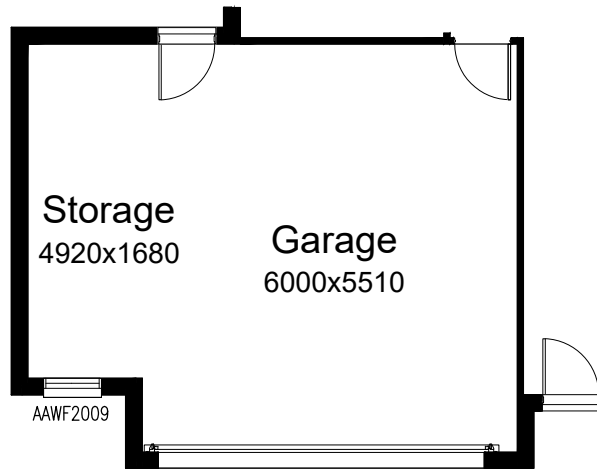


OPTION IP9

Provide 3.19m high raised ceiling to Kitchen and Alfresco with 2No. AFW0515 fixed highlight windows over sliding door. Provide plaster bulkhead over overhead cupboards, Ref space and where ceiling height changes. Reduce Beds 2 and 3 by 30mm so external wall lines up with Bed 1 wall and bring the roof pitching point back 450mm in line with Bed 1 also to remove hips and valleys to roof, and provide 'cut-out' roof over half of Alfresco. Provide bulkheads to Beds 2 and 3 as shown as a result of the new roof pitching point. Provide painted Axon 'Linea' cladding to Alfresco in lieu of brickwork.

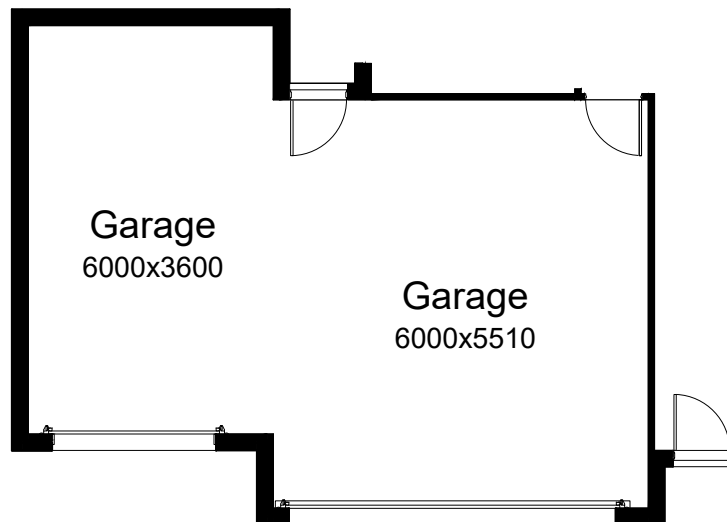
Note: this option NOT available in conjunction with option EP1





OPTION G1

Provide extension to Garage to create additional Storage area including additional AAWF2009 awning window. Increases width of the home by 1680mm. Increases area of the home by 9.06m²



OPTION G2

Provide extension to Garage to create Triple Car Garage including additional 2100x2410 garage door as per colour selection. Increases width of the home by 3600mm. Increases area of the home by 23.81m²

