




Total squares **28.8sq**

 **4**  **2**  **2**



FLOORPLAN OPTIONS

All available ready-to-go floorplan options for this design can be viewed on the following pages, or visit www.burbank.com.au.

Facades available:

Drysdale, Arkley, Coburn, Collins
Dowd, Nolan, Felix, Haring
Woodland

Overall home width	14.51m
Overall home length	20.99m

Residence	2077m ²	22.4sq
Garage	36.3m ²	3.9sq
Porch	8.1m ²	0.9sq
Alfresco	15.1m ²	1.6sq
Total	267.2m²	28.8sq

Listed details based on Drysdale façade floorplan (illustrated)

*Copyright conditions. All photos and illustrations are representative only. Floor plans and specifications may be varied by Burbank without notice, the dimensions are diagrammatic only and a Building Contract with final drawings will display correct dimensions and detail. All designs are the property of Burbank and must not be used, reproduced, copied or varied, wholly or in part without written permission from an authorised Burbank representative. Copyright Burbank Australia Pty Ltd. ABN 91 007 099 872. Builders Registration Number CDB-U-52603.

Call 13 BURBANK
Visit burbank.com.au

FLOORPLAN OPTIONS



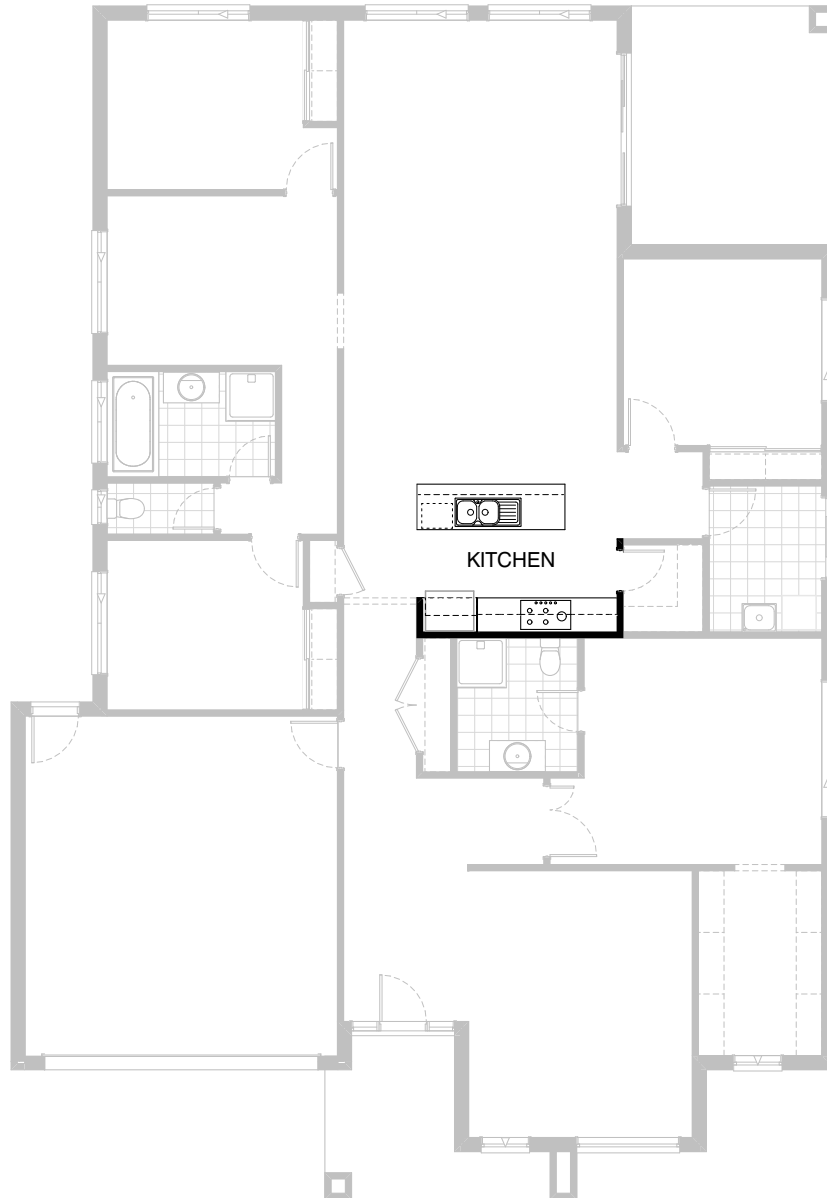
4



2



2



Option K-1

- Provide Kitchen upgrade with 1no. 800mm base cabinets,
2no. 350 base cabinets, 2no. 400 base cabinets,
2no. 400mm overhead cabinets, 2no. 350mm overhead cabinets,
1no. 900mm under bench oven, 1no. 900mm hotplate,
1no. 900mm retractable rangehood.
- Laminated end panel with 1no. open shelf above refrigerator space,
1no. laminated MW provision with
pot drawer below, 1no. laminated DW provision and
1no. 450mm wide drawers with additional tiled splashback.

*Copyright conditions. All photos and illustrations are representative only. Floor plans and specifications may be varied by Burbank without notice, the dimensions are diagrammatic only and a Building Contract with final drawings will display correct dimensions and detail. All designs are the property of Burbank and must not be used, reproduced, copied or varied, wholly or in part without written permission from an authorised Burbank representative. Copyright Burbank Australia Pty Ltd. ABN 91 007 099 872. Builders Registration Number CDB-U-52603.

FLOORPLAN OPTIONS



4



2



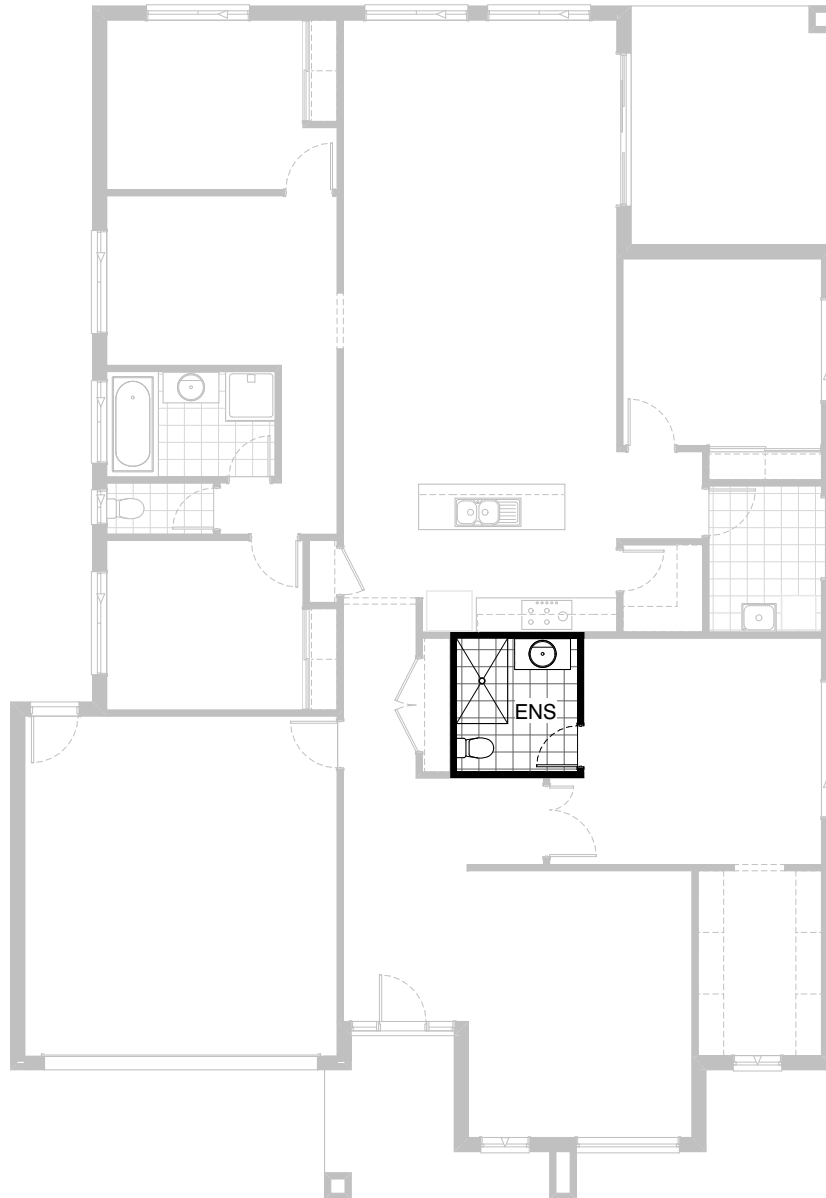
2



Option LD-1

Provide Laundry upgrade with additional laminated inset trough,
1no. 800mm base cupboard, 1no. 300mm base cabinet,
1no. 800mm overhead cabinet and 1no. 300mm overhead
cabinet with additional tiled splashback and bench top to suit.




FLOORPLAN OPTIONS

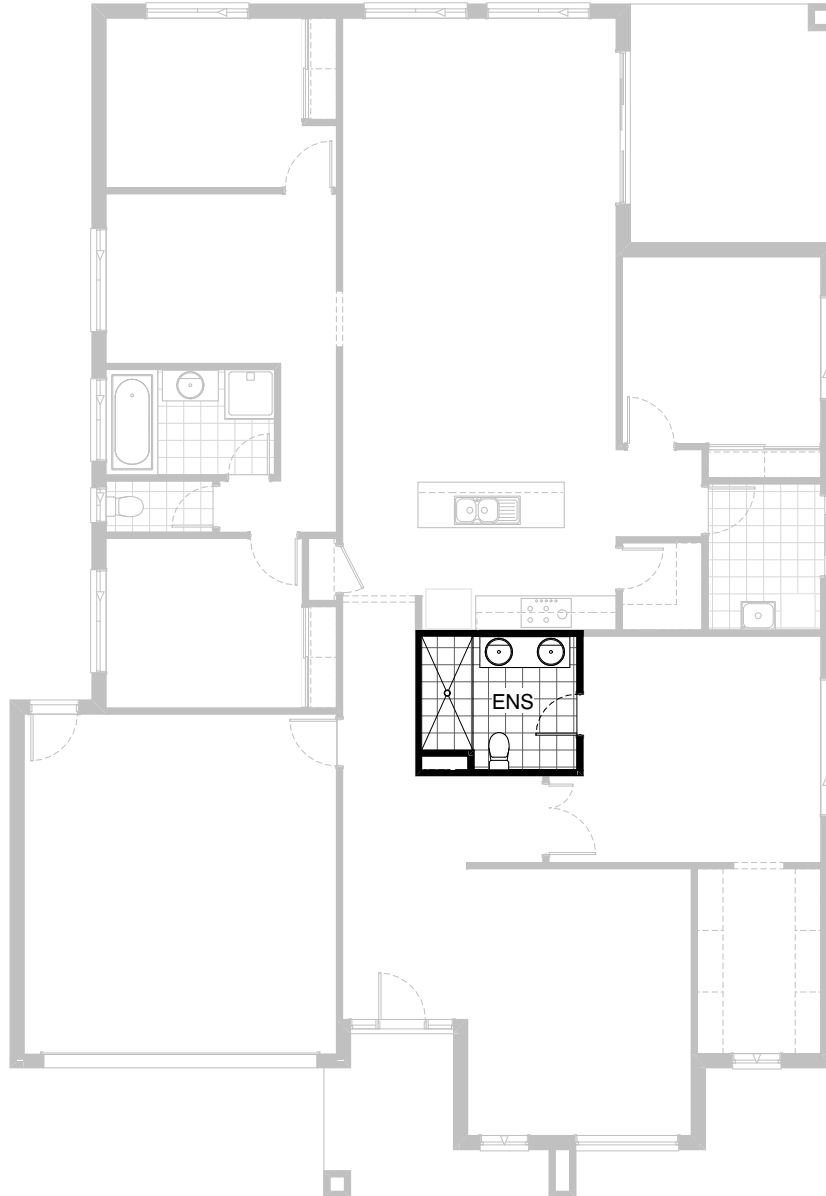


Option ENS-1

Provide Ensuite upgrade with 900mm x 1500mm tiled shower base in lieu of standard to suit.

FLOORPLAN OPTIONS

 **4**  **2**  **2**



Option ENS-2

Provide Ensuite upgrade by deleting Linen cupboard with 2.no 820mm flush panel hinged doors, and 450mm deep shelves and extend Ensuite width by 600mm. Provide additional 2000mm tiled shower base in lieu of 900mm x 900mm polymarble shower base including void and 1no. 1582mm wide vanity unit with 2no. basins in lieu of standard.

FLOORPLAN OPTIONS



Option IP1-1

Relocate Ensuite with W.I.R and provide additional hanging rail and shelf to W.I.R.

FLOORPLAN OPTIONS

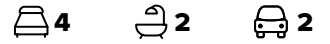
 **4**  **2**  **2**



Option IP1-2

Provide Real Flame Inspire 900 gas fireplace, 400mm off floor level in a 1400mm x 420mm boxed out plaster wall with a 4 sided black fascia to Family room rear wall including additional 2no. 2057mm x 1450mm aluminium sliding windows in lieu of standard 2no. 2057mm x 1810mm windows.

FLOORPLAN OPTIONS

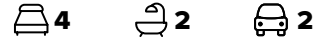


Option IP1-3

Provide Real Flame Inspire 900 gas fireplace, to Lounge including 460mm x 1740mm stud and plaster framing with feature tiles including returns, 510mm high, 600mm deep bench with 60mm thick laminate benchtop, with 4no drawers below fireplace.

NOTE: 2.no False drawers directly below fireplace

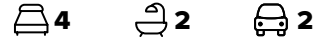
FLOORPLAN OPTIONS



Option IP1-4

Relocate Kids Area with Bed 4, resize Kids Area to 3900mm x 3510mm with 2000mm plastered opening and provide 2057mm x 2410mm sliding window in lieu of 1200mm x 1800mm sliding window, re-configure bathroom and WC, delete Linen cupboard and resize Beds 2 & 3 to 2900mm x 3470mm making room for Bed 4 with robe, rename relocate bed 4 to bed 3.

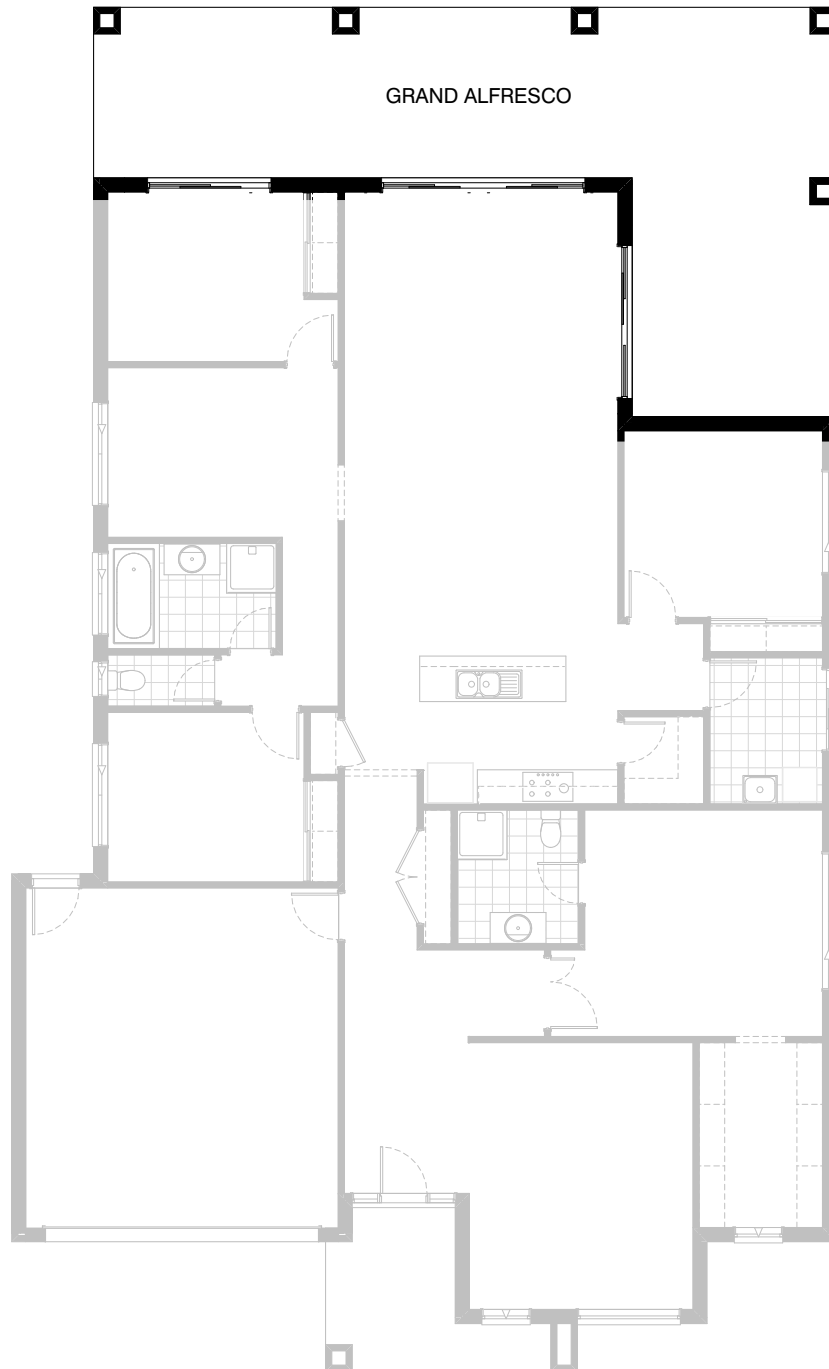
FLOORPLAN OPTIONS



Option IP1-5

- Relocate Kids Area with Bed 4, resize Kids Area to 3900mm x 3510mm with 2no. 820mm cavity sliding doors and provide 2057mm x 2410mm sliding window in lieu of 1200mm x 1800mm sliding window,
- re-configure bathroom with 782mm wide vanity in-lieu of standard, and WC, delete Linen cupboard and resize Bed 2 to 2900mm x 3470mm and Bed 3 to 3020mm x 2980mm making room for Bed 4 with robe, relocate bed 4 to bed 3.
- Laundry upgrade with additional laminated inset trough, 2no. 800mm base cabinets, 1no. 300mm base cabinet, 1no. 700mm base cabinet, 2no. 800mm overhead cabinets, 1no. 700mm overhead cabinet, 1no. 300mm overhead cabinet and 1no. 400mm laminated broom cupboard with additional tiled splashback and bench top to suit.
- 820 Cavity sliding door to laundry in-lieu of standard 820 swing door
- Kitchen upgrade with 1200mm wide stone bench top with wrap down ends and drain grooves, undermount sink, 1no 450mm base cabinet, 2no. 900mm base cabinet, 1no intergrated DW. and 1no. 450mm cutlery drawer.
- 2no. 800mm pot drawers units, 1no. 900mm underbench oven with cooktop and retractable rangehood within 900mm overhead cabinet, 2no. 800mm overhead cabinets, laminated end panel with 1no. open shelf above refrigerator space.
- Decrease width of Bed 1 by 250mm and provide ensuite upgrade by providing 1no. 1930mm x 900mm tiled shower base & 1no. 1482mm vanity unit with 2no. basins and 820mm cavity sliding door.
- Reduce width of entry by 100mm and Increase width of linen cupboard by 550m and increase length by 360mm and change to WIL with 450mm shelving to suit.

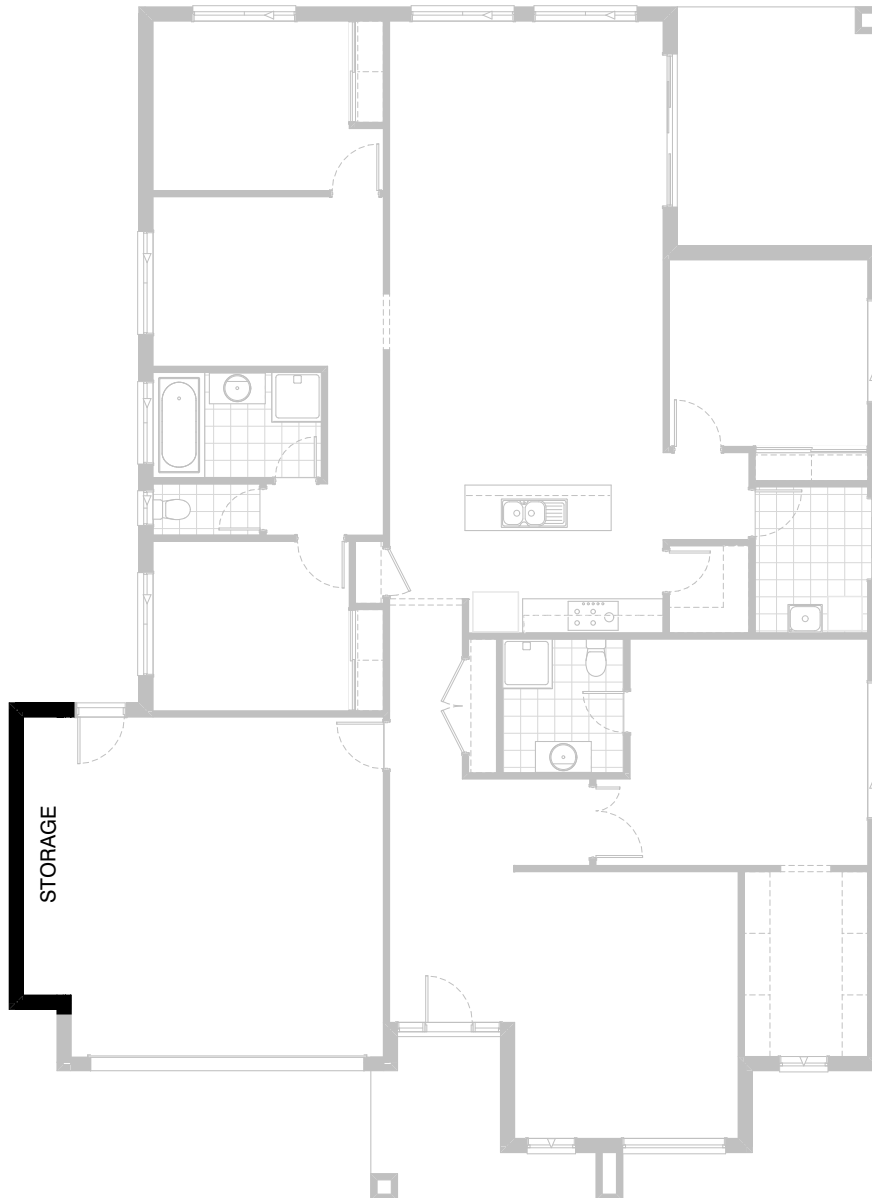
FLOORPLAN OPTIONS



Option EP1-1

Provide Grand Alfresco option adding 3000mm deep structural concrete slab to rear, 4no. additional 470mm x 470mm brick piers including timber post support within and extended roof line to suit. Additional 2110mm x 3575mm aluminium bi-parting sliding door to Family and 2110mm x 2170mm aluminium sliding door to Bed 3 in lieu of standard window.
Increase area by 39.21m²
Increase length by 3000mm

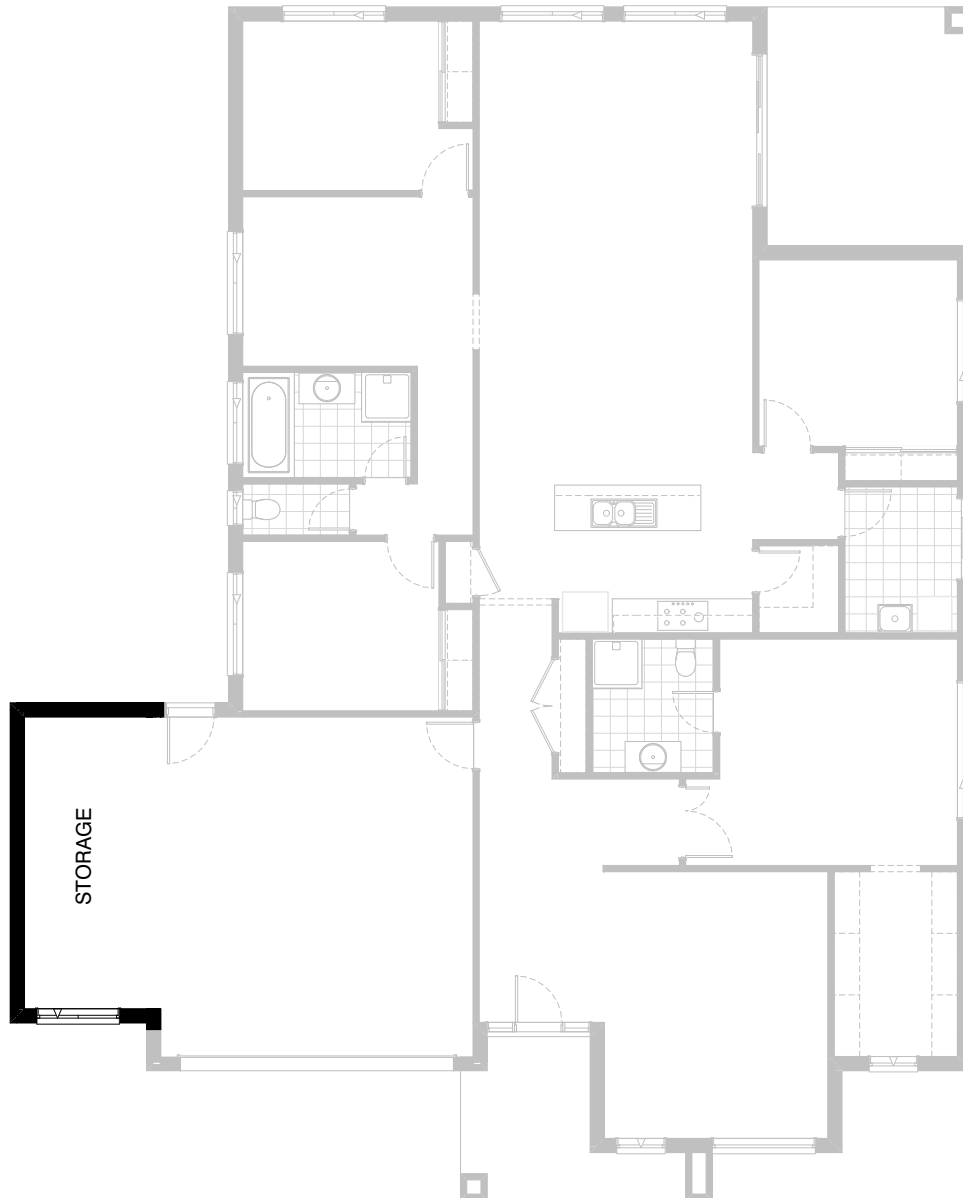
FLOORPLAN OPTIONS



Option G-1

Provide extension to Garage to
create additional Storage area.
Increase area by 4.53m².
Increase width by 840mm.

FLOORPLAN OPTIONS



Option G-2

Provide extension to Garage to create additional Storage area including additional 2057mm x 1450mm aluminium awning window.
Increase area by 13.51m².
Increase width by 2400mm.

FLOORPLAN OPTIONS



Option G-3

Provide triple car Garage including additional
Garage door as per colour selection.
Increase area by 23.29m²
Increase width by 3600mm