

Facades available:	
Lachlan, Barrington, Flinders	
Cooper, Nepean, Austin	
Overall home width	13.79m
Overall home length	18.11m

Residence	171.7m ²	18.5sq
Garage	36.3m ²	3.9sq
Porch	5.5m ²	0.6sq
Alfresco	9.4m ²	1.0sq
Total	222.9m²	24.0sq

FLOORPLAN OPTIONS

We personalise our floorplans. Talk to us about our huge range of ready-to-go design options.

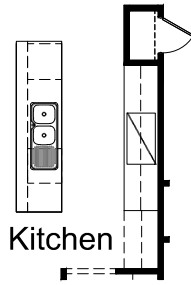
Listed details based on Lachlan facade floorplan (illustrated)

*Copyright conditions. All photos and illustrations are representative only. Floor plans and specifications may be varied by Burbank without notice, the dimensions are diagrammatic only and a Building Contract with final drawings will display correct dimensions and detail. All designs are the property of Burbank and must not be used, reproduced, copied or varied, wholly or in part without written permission from an authorised Burbank representative. Copyright Burbank Australia (NSW) Pty Ltd. ABN 88 610 822 770. NSW BL 295627C ACT BL 2016566.

Call 13 BURBANK
Visit burbank.com.au

OPTION K1

Provide Kitchen upgrade with open shelf above refrigerator space and 1no. MW provision with pot drawer to island bench in lieu of 600mm base cupboard. Adjust bench top to suit
Note: This cannot be selected with option K2



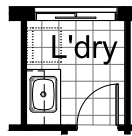
OPTION G2

Provide extension to Garage to create Workshop area including additional AAWF1809 Window to suit
Increases Width by 1800mm
Increases area by 10.13m².



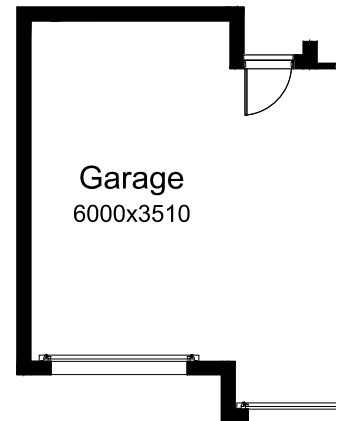
OPTION LD1

Provide Landry Option with 1no. 900mm base cupboard, 1no. 900mm overhead cupboard Additional tiled splash back and bench top to suit.
Note: This cannot be selected with option IP3 & IP5



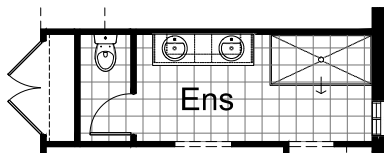
OPTION G3

Provide triple car Garage including additional Garage door as per colour selection.
Increases area by 23.61m².
Increases width by 3600mm.



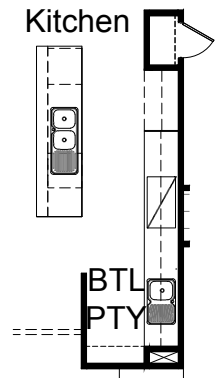
OPTION ENS1

Provide Ensuite Option by reduced width of theatre by 100mm to increase width of Ensuite. Remove WIR 1b and provide storage cupboard to entry with double 720mm flush panel doors including 4no. 450mm shelving in lieu of standard, 1800mm x 900mm tiled shower base in lieu standard and 1782mm wide vanity unit with 2no. basins in lieu standard.
Note: This cannot be selected with option IP3



OPTION K2

Provide Kitchen upgrade with 1no. open shelf above refrigerator space, 4no. 800mm base cupboards, 1no. 400mm base cupboard, 1no. 450mm base cupboard, 1no. MW provision with pot drawer, 1no. 450mm cutlery drawer, 1no DW provision, 1no. 900mm underbench oven with cooktop 1no. retractable rangehood concealed within 900mm overhead cupboard, 3no. 800mm overhead cupboards, 1no. 450mm overhead cupboard, 4/300mm shelving ILO 4/450mm shelving. Remove wall and opening to WIP. Adjust bench top to suit and tiled splashback to suit.
Note: This cannot be selected with option K1 & IP1.



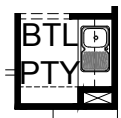
OPTION G1

Provide extension to Garage to create additional Storage area.
Increases area by 4.53m².
Increases width by 840mm.



OPTION IP1

Provide Butlers pantry option by providing 1no. 800mm base cupboard with single inset sink, 1no. 300mm base cupboard, 1no. 800mm overhead cupboard, 1no. 300mm overhead cupboard 4no. 300mm shelving in lieu of 4no. 450mm shelving Provide additional bench top and tiled splashback to suit.
Note: This cannot be selected with Option K2.



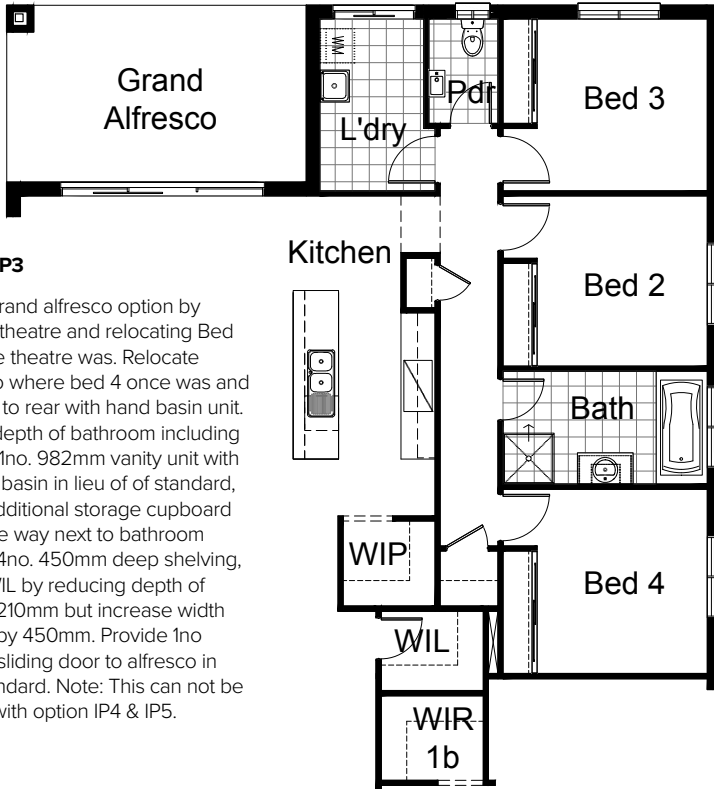
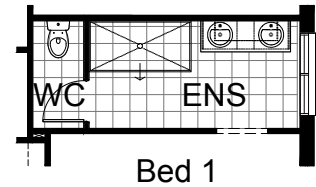
OPTION IP2

Provide Bathroom option by relocating toilet pan to bathroom. Provide 900mm X 1200mm tiled shower base 1282mm Vanity unit with 1no. basin
 Note: This cannot be selected with option IP3 & IP5.



OPTION ENS2

Provide Ensuite option by Reducing width of WC by 100mm and increase width of ENS by 100mm, 1800mm x 900mm tiled shower base in lieu of standard, 1582mm vanity unit with 2no. vanity basins, 1no. ASW0515 window in lieu of standard.
 Note: This can only be selected with option IP6.

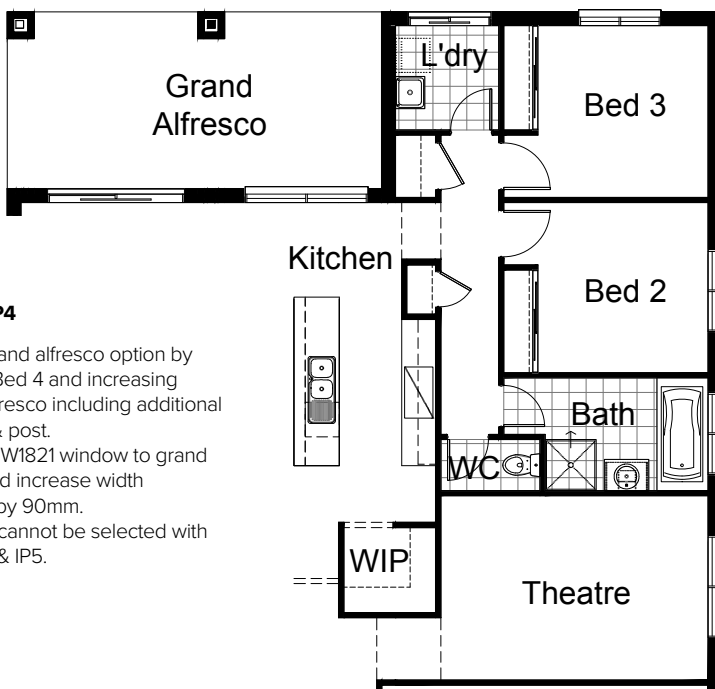
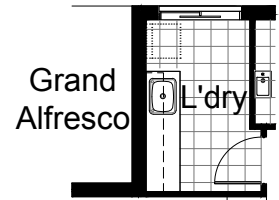


OPTION IP3

Provide Grand alfresco option by removing theatre and relocating Bed 4 to where theatre was. Relocate Laundry to where bed 4 once was and move WC to rear with hand basin unit. Increase depth of bathroom including providing 1no. 982mm vanity unit with 1no vanity basin in lieu of of standard, Provide additional storage cupboard to passage way next to bathroom including 4no. 450mm deep shelving, Provide WIL by reducing depth of WIR1b by 210mm but increase width of WIR 1b by 450mm. Provide 1no ASD2136 sliding door to alfresco in lieu of standard. Note: This can not be selected with option IP4 & IP5.

OPTION LD2

Provide Laundry option with 2no. 800mm base cupboards 1no. 450mm base cupboard, 2no. 800mm overhead cupboards, 1no. 450mm overhead cupboard, Adjust bench top to suit and tiled splashback to suit.
 Note: This can only be selected with option IP3 & IP5.

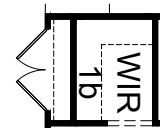


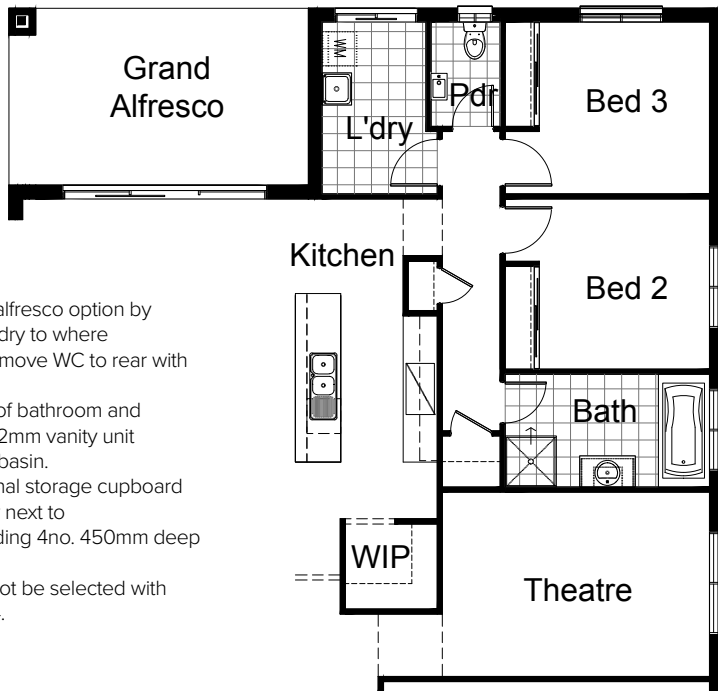
OPTION IP4

Provide Grand alfresco option by removing Bed 4 and increasing width of alfresco including additional brick pier & post. Provide ASW1821 window to grand alfresco and increase width of laundry by 90mm.
 Note: This cannot be selected with option IP3 & IP5.

OPTION IP7

Provide additional Storage Cupboard to Entry by reducing WIR 1b by 450mm and provide double 720mm flush panel hinged doors and 4No. 300mm deep shelves.
 Note: This cannot be selected with option IP3, IP6.





OPTION IP5

Provide Grand alfresco option by relocating Laundry to where Bed 4 was and move WC to rear with hand basin unit.
 Increase width of bathroom and provide 1no. 982mm vanity unit with 1no. vanity basin.
 Provide additional storage cupboard to passage way next to bathroom including 4no. 450mm deep shelving
 Note: This cannot be selected with option IP3 & IP4.

OPTION IP6

Provide Living to front of home and replace Theatre with Bed 1. Relocate WIR 1b to suit and relocate Ensuite to rear of bathroom and provide 1582mm vanity unit with 1no. vanity basin, 1200mm x 900mm tiled shower base in lieu of standard, 1no. ASW1809 window to Ensuite and 1no. ASW0524 in lieu of standard.
 Note: This cannot be selected with option ENS-1, IP3, IP4 & IP5.

