
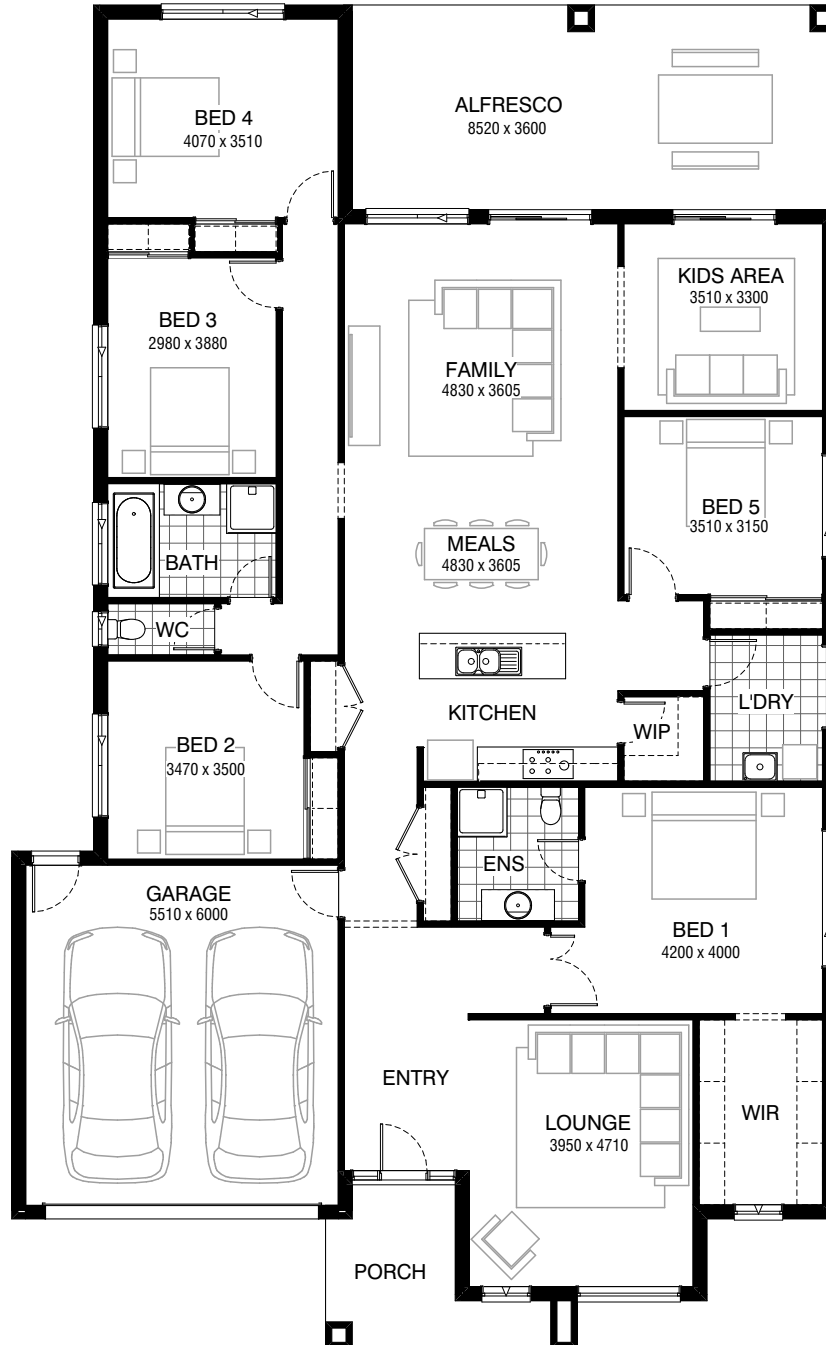


Total squares **32.5sq**

 **5**  **2**  **2**



Facades available:

Drysdale, Arkley, Coburn, Collins
Dowd, Nolan, Felix, Haring
Woodland

Overall home width 14.51m

Overall home length 23.63m

Residence 226.7m² 24.4sq

Garage 36.3m² 3.9sq

Porch 8.1m² 0.9sq

Alfresco 30.7m² 3.3sq

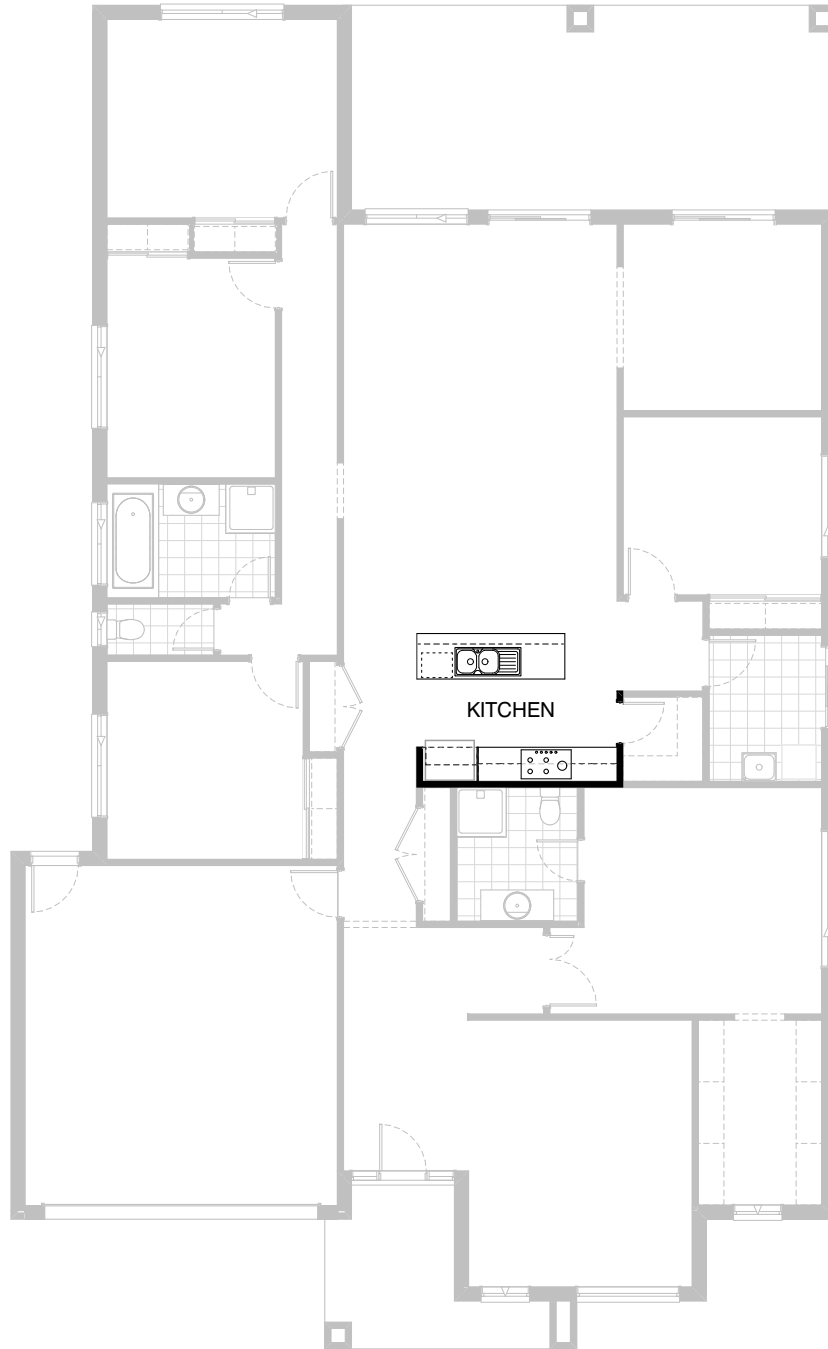
Total 301.8m² 32.5sq

FLOORPLAN OPTIONS

All available ready-to-go floorplan options for this design can be viewed on the following pages, or visit www.burbank.com.au.

Listed details based on Drysdale façade floorplan (illustrated)

FLOORPLAN OPTIONS



Option K-1

Provide Kitchen upgrade with 1no. 800mm base cabinet,
2no. 350 base cabinets, 2no. 400 base cabinets,
2no. 350mm overhead cabinets, 2no. 400mm overhead cabinets.
With 1no. 900mm underbench oven, 1no 900mm hotplate
and 1no. 900mm retractable rangehood., 1no. laminated open
shelf above refrigerator space, 1no. laminated MW. provision
with pot drawer below, 1no. laminated DW. provision and
1no. 450mm wide drawers with additional tiled splashback.

FLOORPLAN OPTIONS



5



2



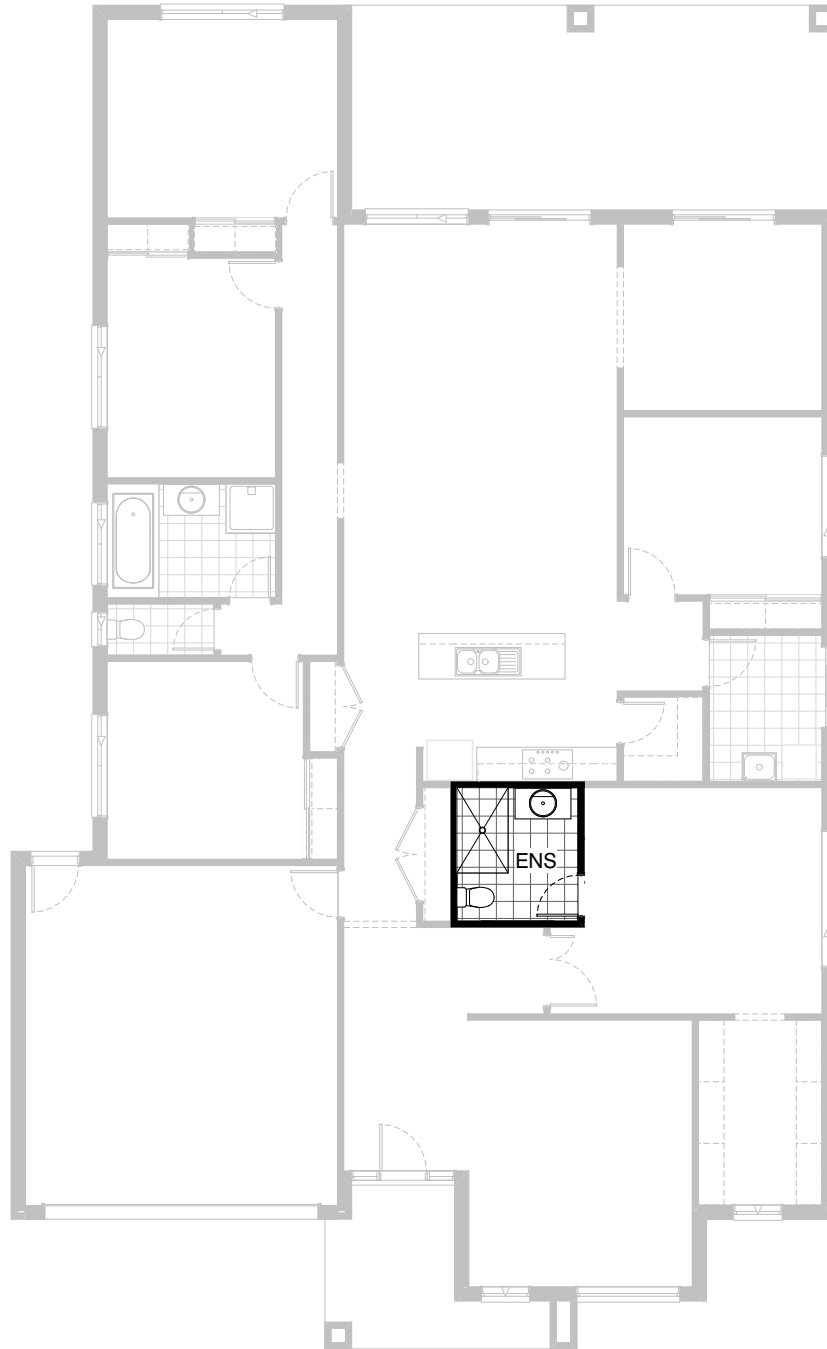
2



Option LD-1

Provide Laundry upgrade with additional laminated inset trough,
1no. 800mm base cabinet, 1no. 300mm base cabinet,
1no. 800mm overhead cabinet and 1no. 300mm overhead
cabinet with additional tiled splashback and bench top to suit.

FLOORPLAN OPTIONS



Option ENS-1

Provide Ensuite upgrade with 900mm x 1500mm tiled shower base and 1 no. 982 wide vanity unit in lieu of standard to suit.

FLOORPLAN OPTIONS



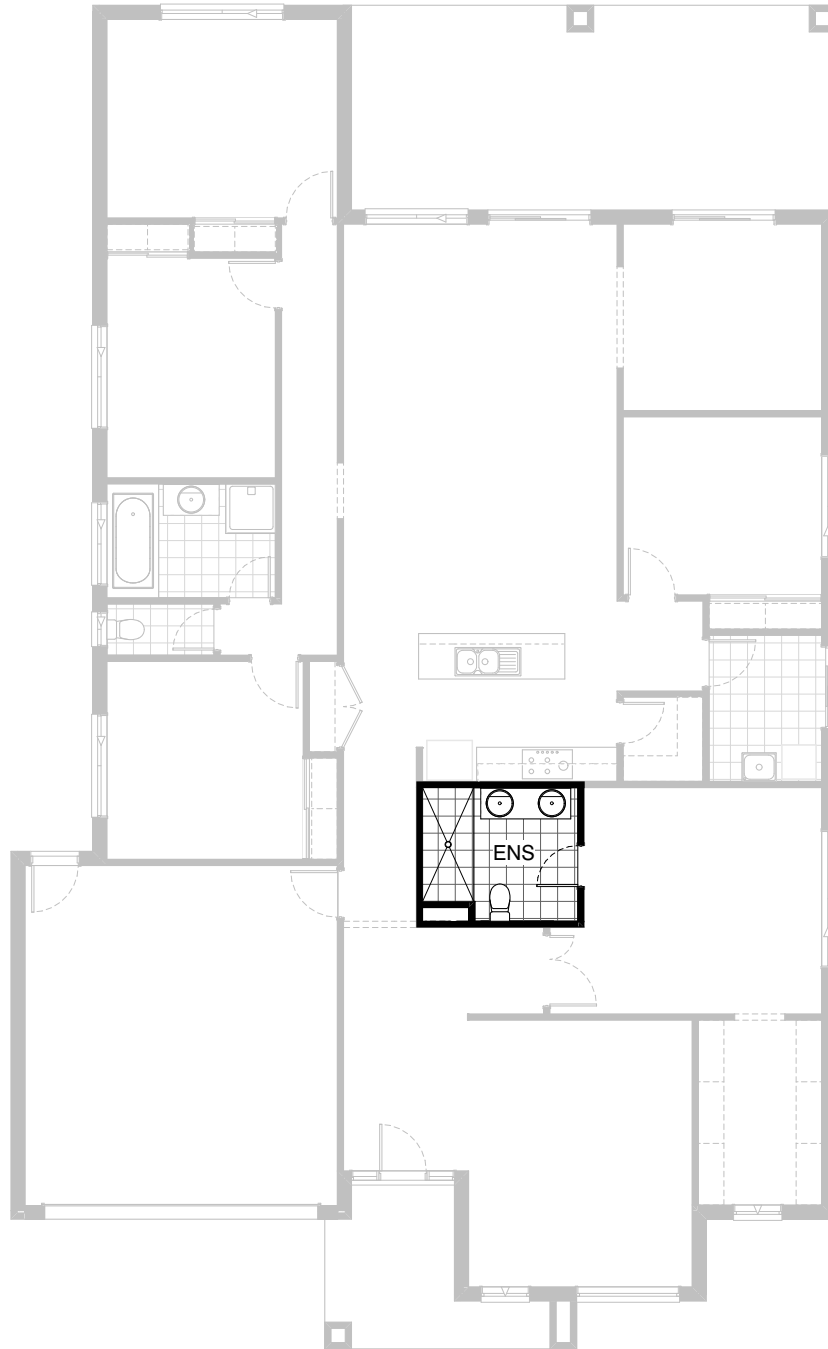
5



2



2






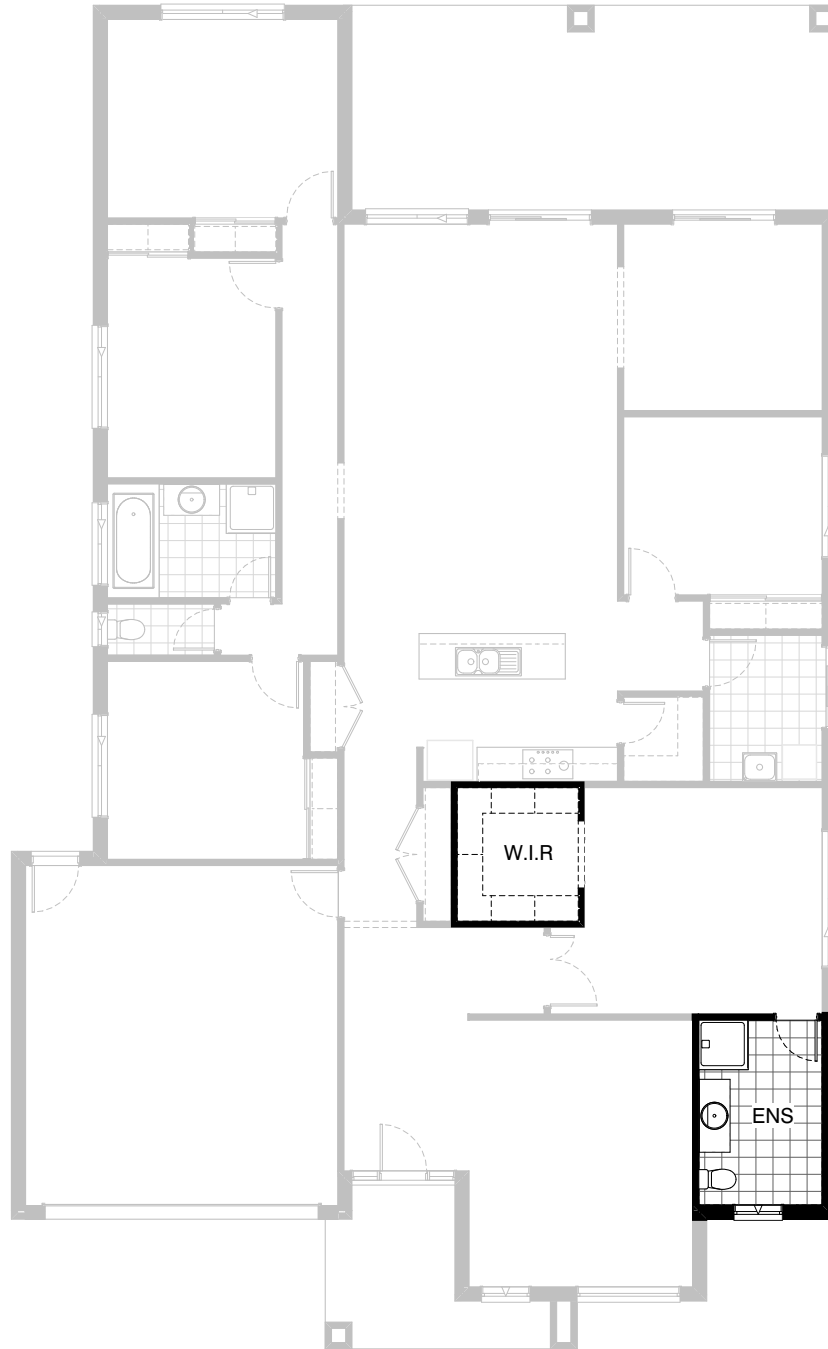
Option ENS-2

Provide Ensuite upgrade by deleting Linen cupboard with 2no. 820mm flush panel hinged doors, and 450mm deep shelves and extend Ensuite width by 600mm.

Provide additional 2000mm tiled shower base in lieu of 900mm x 900mm polymarble shower base including void and 1no. 1582mm wide vanity unit with 2no. basins in lieu of standard.

FLOORPLAN OPTIONS

 **5**  **2**  **2**



Option IP1-1

Relocate Ensuite with W.I.R and provide additional hanging rail and shelf to W.I.R.

FLOORPLAN OPTIONS



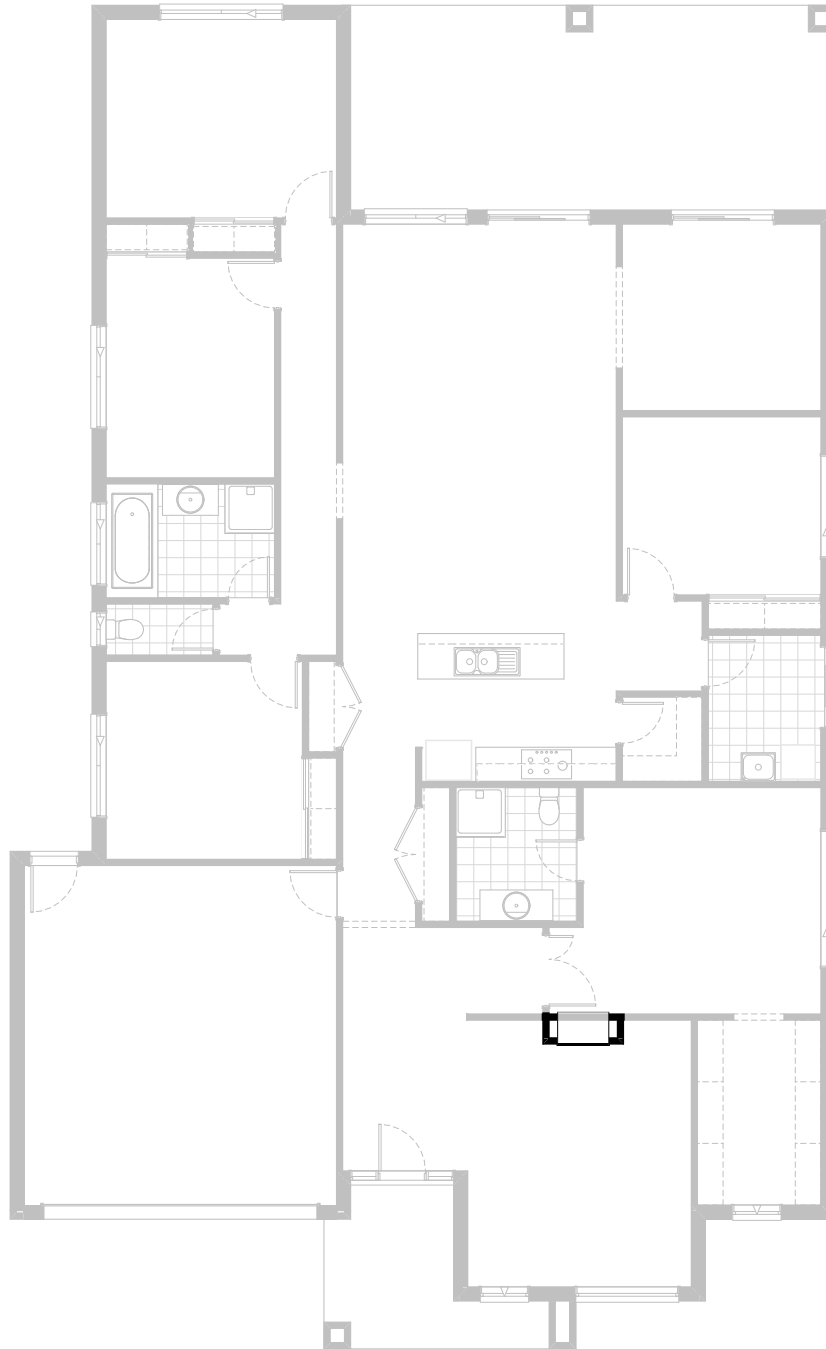
5



2



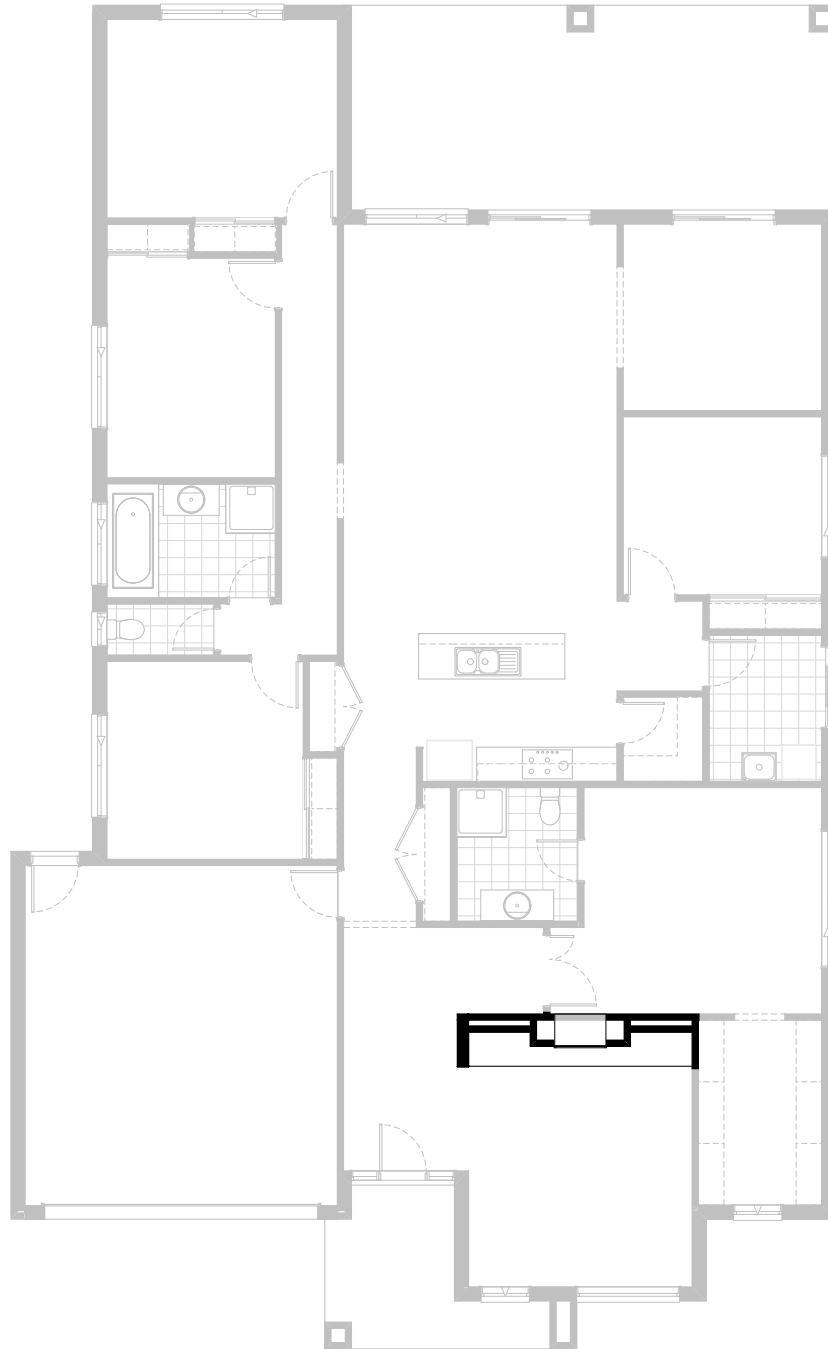
2



Option IP1-2

Provide Real Flame Inspire 900 gas fireplace, 400mm off floor level in a 1400mm x 420mm boxed out plaster wall with a 4 sided black fascia to Lounge room wall.

FLOORPLAN OPTIONS

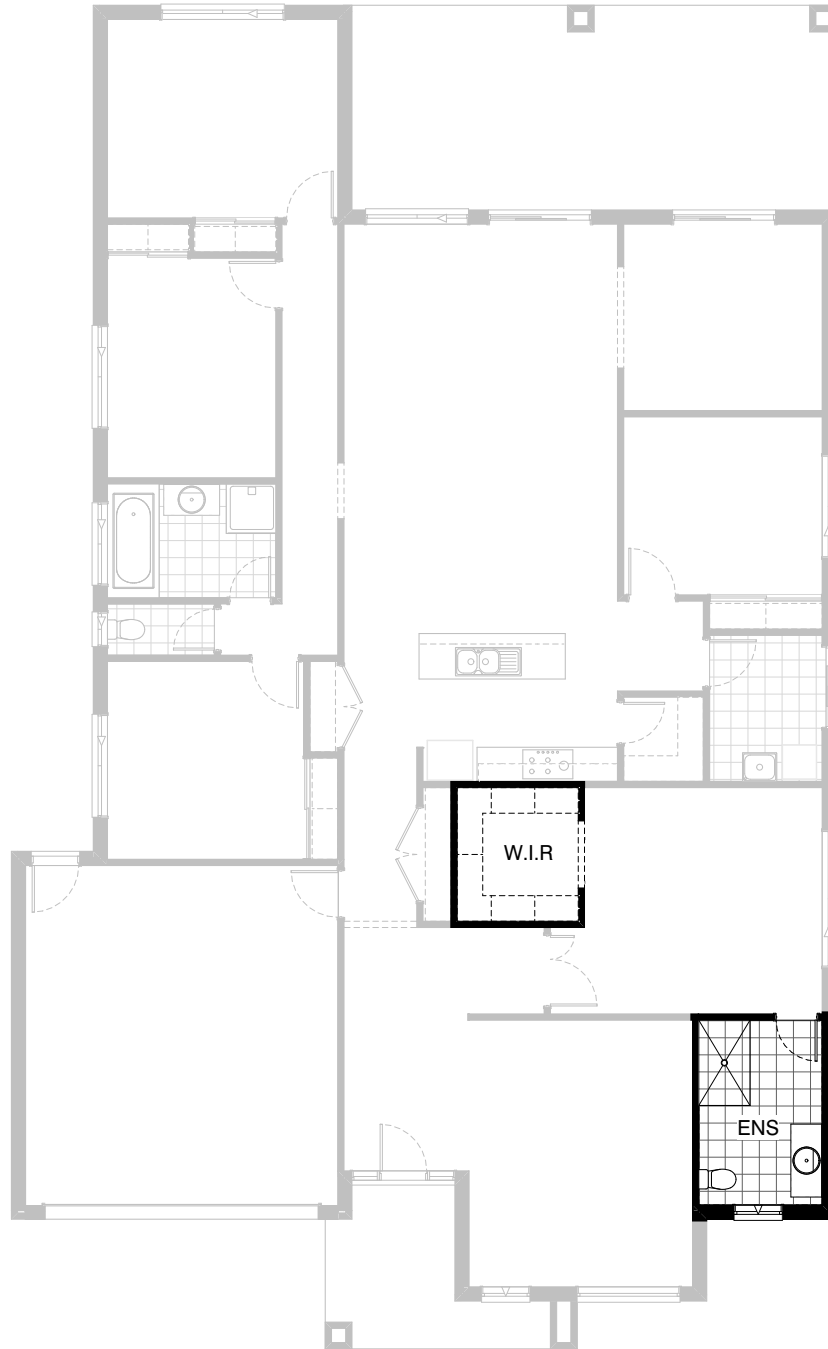


Option IP1-3

Provide Real Flame Inspire 900 gas fireplace, to Lounge including 460mm x 1740mm stud and plaster framing with feature tiles including returns, 510mm high, 600mm deep bench with 60mm thick laminate benchtop, with 4no drawers below fireplace.

NOTE: 2no. False drawers directly below fireplace

FLOORPLAN OPTIONS



Option IP1-4

Relocate Ensuite with W.I.R. and provide additional hanging rail and shelf to W.I.R. and 900mm x 1500mm tiled shower base to Ensuite.

FLOORPLAN OPTIONS



Option G-1

Provide extension to Garage to create additional Storage area.
Increase area by 4.53m².
Increase width by 840mm.

FLOORPLAN OPTIONS

 **5**  **2**  **2**



Option G-2

Provide extension to Garage to create additional Storage area including additional 2057mm x 1450mm aluminium awning window.
Increase area by 13.51m².
Increase width by 2400mm.

FLOORPLAN OPTIONS



Option G-3

Provide triple car Garage including additional
Garage door as per colour selection.
Increase area by 23.29m²
Increase width by 3600mm