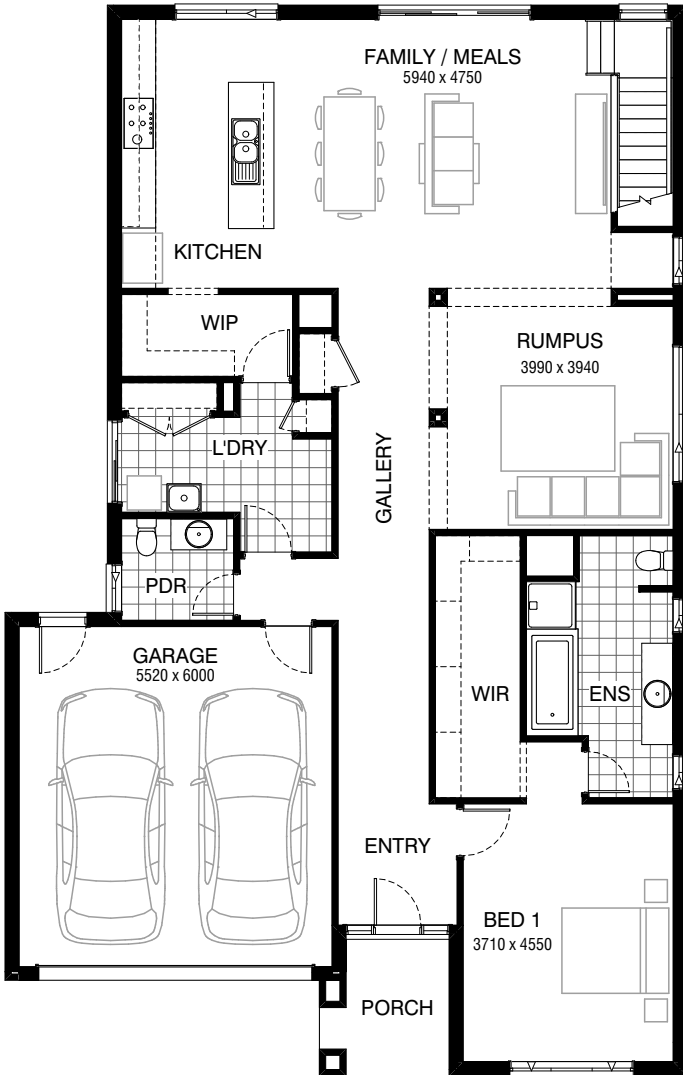
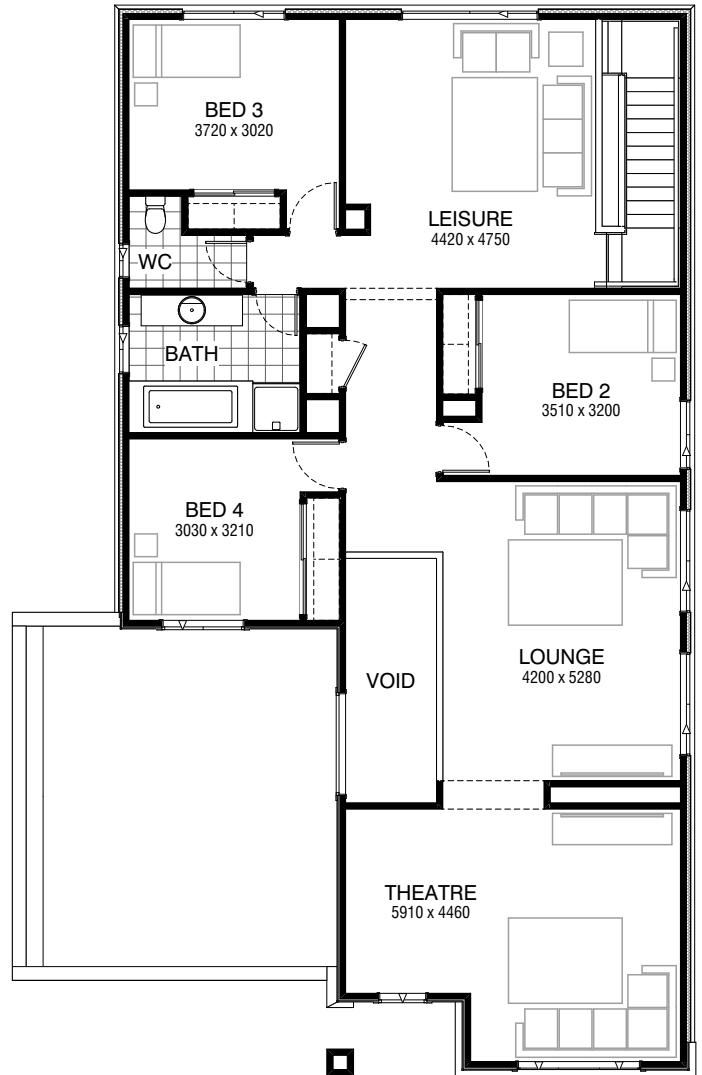


Total squares **37.5sq**

 **4**  **2.5**  **2**



GROUND FLOOR



FIRST FLOOR

FLOORPLAN OPTIONS




All available ready-to-go floorplan options for this design can be viewed on the following pages, or visit www.burbank.com.au.

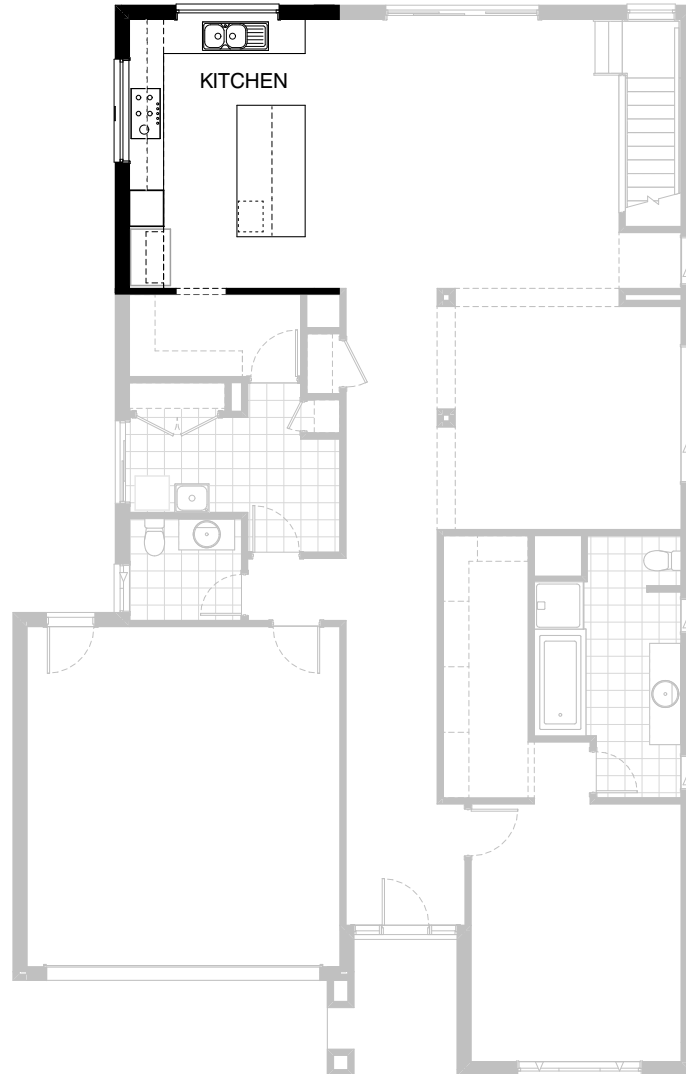
Facades available:

Condor, Matisse, Monet, Aqua	Residence	307.0m ²	33.1sq
Hester, Metropolitan, Rainforest	Garage	36.5m ²	3.9sq
Overall home width	Porch	5.1m ²	0.6sq
Overall home length	Total	348.6m²	37.5sq

Listed details based on Condor façade floorplan (illustrated)

FLOORPLAN OPTIONS




 **4**  **2.5**  **2**

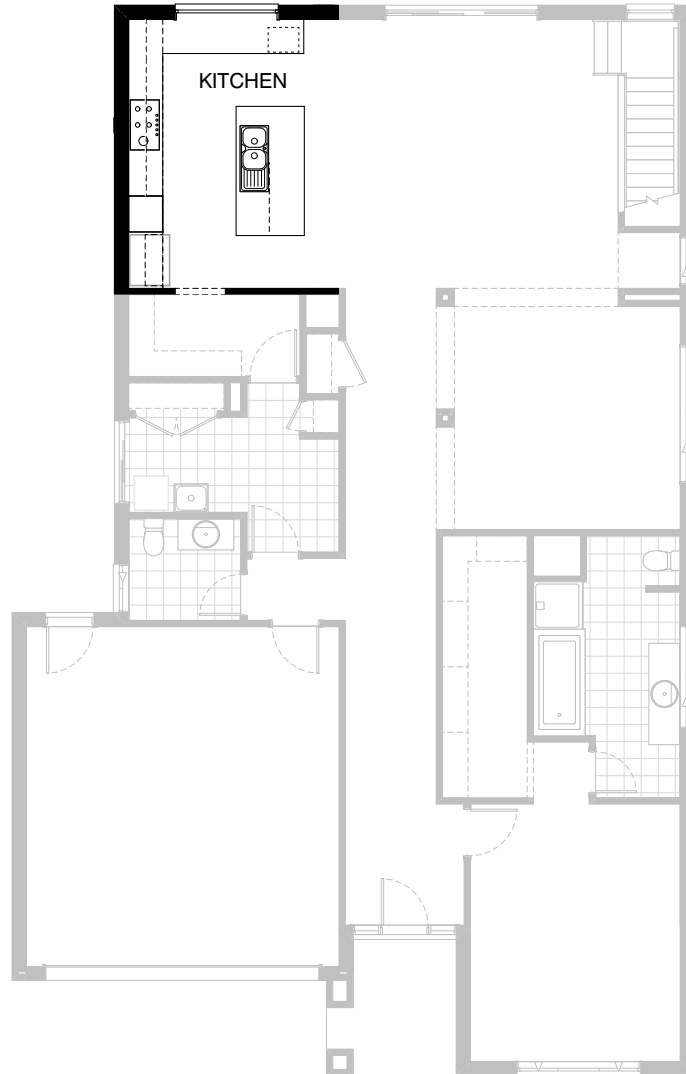


Option K-1

Provide 'L' shape Kitchen redesign including 1200mm wide island bench with 1no. laminated open shelf above refrigerator space, 1no. laminated wall oven tower, 1no. 900mm pot drawers, 2no. 900mm base cabinets, 1no. 1050mm blind carcass with 1no. 600mm door, 1no. 900mm overhead cabinet, 1no. 800mm overhead cabinet, 1no. 350mm overhead cabinet, plaster bulkhead, 1no. 450mm base cabinet, 1no. laminated DW. provision with DW. appliance, 1no. 450mm drawers, 2no. 800mm base cabinets, 1no. laminated MW. provision and 2no. 400mm base cabinets with additional tiled splashback and bench top to suit. Delete 1no. 2057mm x 1810mm aluminium sliding window to Kitchen and provide 1no. 514mm x 1810mm aluminium fixed window and 1no. 514mm x 1810mm aluminium fixed window to Kitchen.

FLOORPLAN OPTIONS


 **4**  **2.5**  **2**

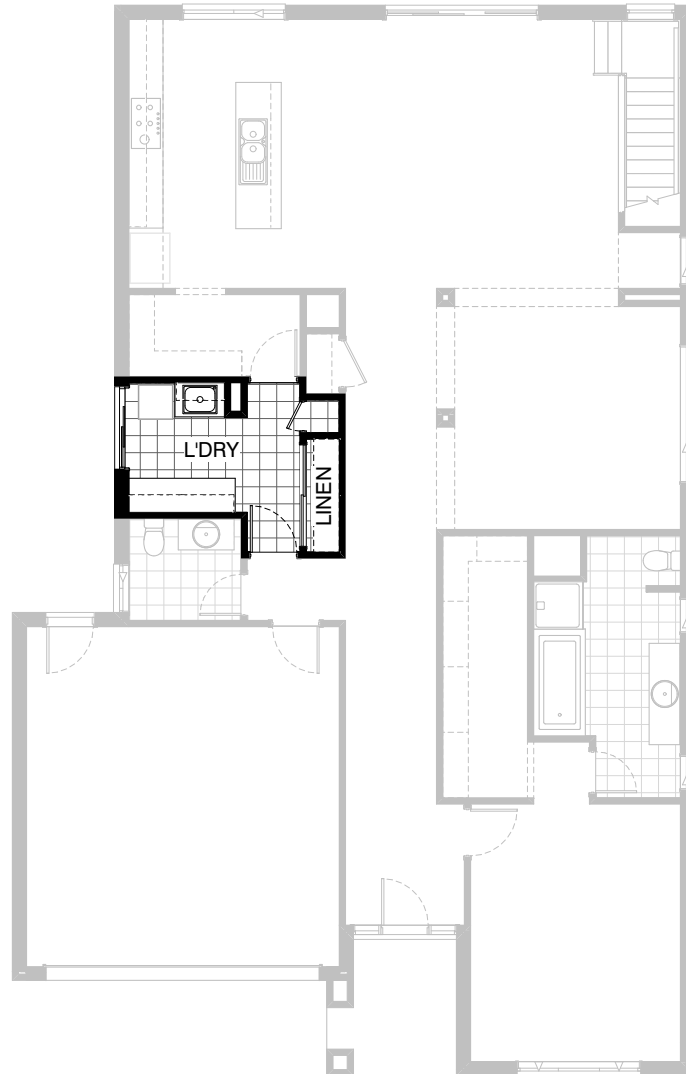


Option K-2

Provide 'L' shape Kitchen redesign including 1200mm wide island bench with 1no. laminated open shelf above refrigerator space, 1no. laminated wall oven tower, 2no. 800mm base pot drawers, 1no. 900mm base pot drawer, 1no. 800mm overhead cabinet, 1no. 700mm overhead cabinet, 1no. laminated 600mm overhead open shelf, 1no. 1050mm blind carcass with 1no. 600mm door, 2no. 800mm base cabinets, 1no. 400mm base cabinet, 1no. laminated MW. provision, 1no. 300mm base cabinet, 1no. laminated DW. provision with DW. appliance, 1no. 450mm drawers, 1no. 1200mm x 1810mm aluminium fixed window in lieu of standard 2057mm x 1810mm aluminium sliding window, 1no. laminated 930mm wide base open shelf to rear of island bench, 1no. 900mm wide laminated base wine rack and 1no. 900mm base cabinet with additional tiled splashback and bench top to suit.

FLOORPLAN OPTIONS

 **4**  **2.5**  **2**






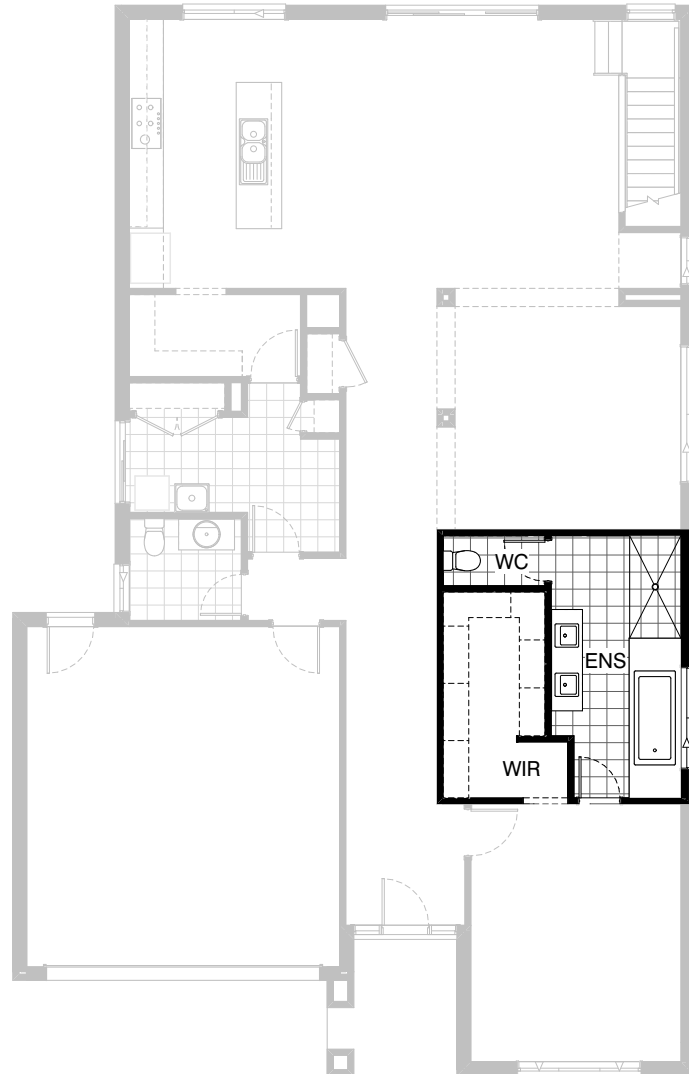
Option LD-1

Provide upgraded Laundry by relocating linen cupboard next to broom with sliding doors in lieu of standard 2no. 720mm flush panel hinged doors. Relocate washing machine space and s.s. inset trough, relocate sliding door by 600mm and provide laminated bench top with 1no. 800mm overhead cabinet, 2no. 900mm overhead cabinets and 2no. 900mm base cabinets with additional tiled splashback and bench top to suit.

Note: Sliding door is mirrored due to relocation of s.s. laundry trough

FLOORPLAN OPTIONS




 **4**  **2.5**  **2**

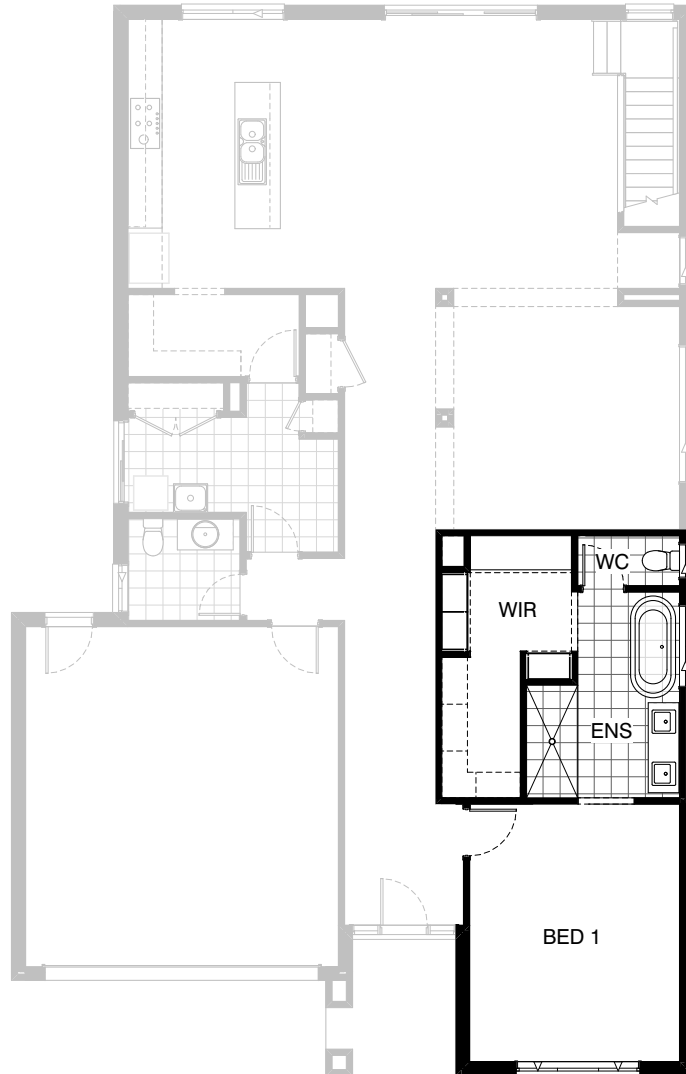


Option ENS-1 GF

Provide Ensuite Upgrade with 1800mm x 900mm tiled shower base.
Relocate WC and provide additional 1no. 720mm
flush panel hinged door with site built plaster lined walls. Provide 1no.
1200mm x 1810mm aluminium sliding window in lieu of standrad
and additional basin to vanity unit. Increase hanging rail to W.I.R.

FLOORPLAN OPTIONS

 **4**  **2.5**  **2**

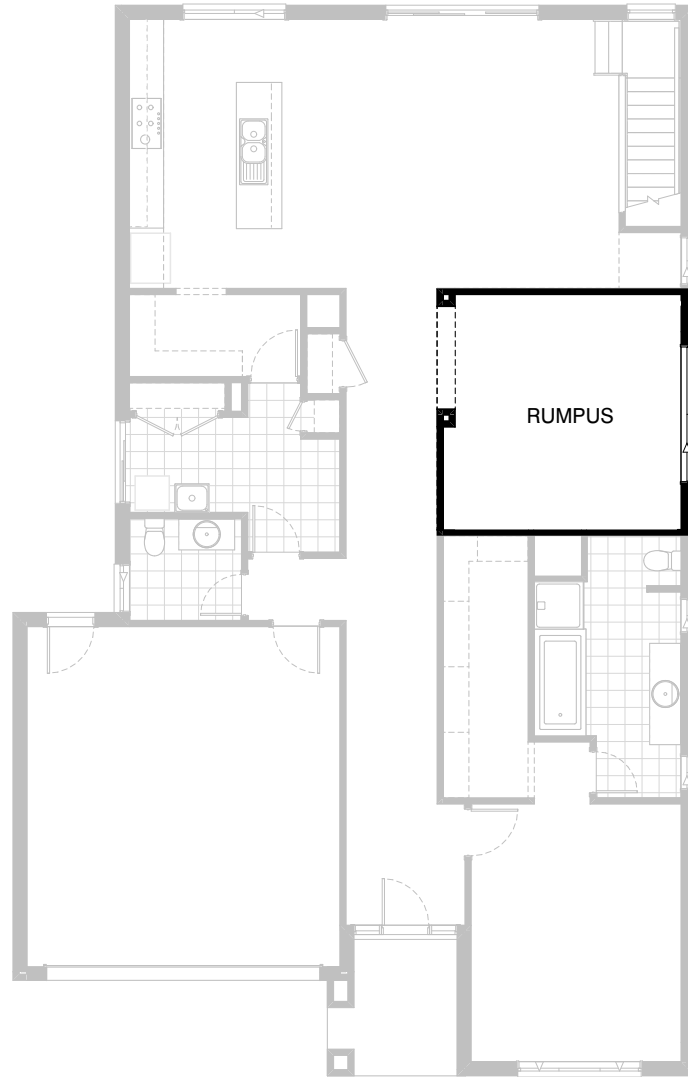


Option ENS-2 GF

Upgrade Ensuite by providing free standing bath in lieu of standard hob, 2000mm x 900mm tiled shower base, reduce width of vanity to 1582mm in lieu of 1782mm with additional basin, 1000mm plastered opening with 300mm bulkhead, dressing table with 2no. 450mm drawers, 450mm shelf with hanging rail and 3no. drawer / cupboard units in lieu of standard. Provide 1543mm x 1450mm aluminium sliding window to Ensuite and 1027mm x 610mm aluminium sliding window to WC.

FLOORPLAN OPTIONS



 **4**  **2.5**  **2**

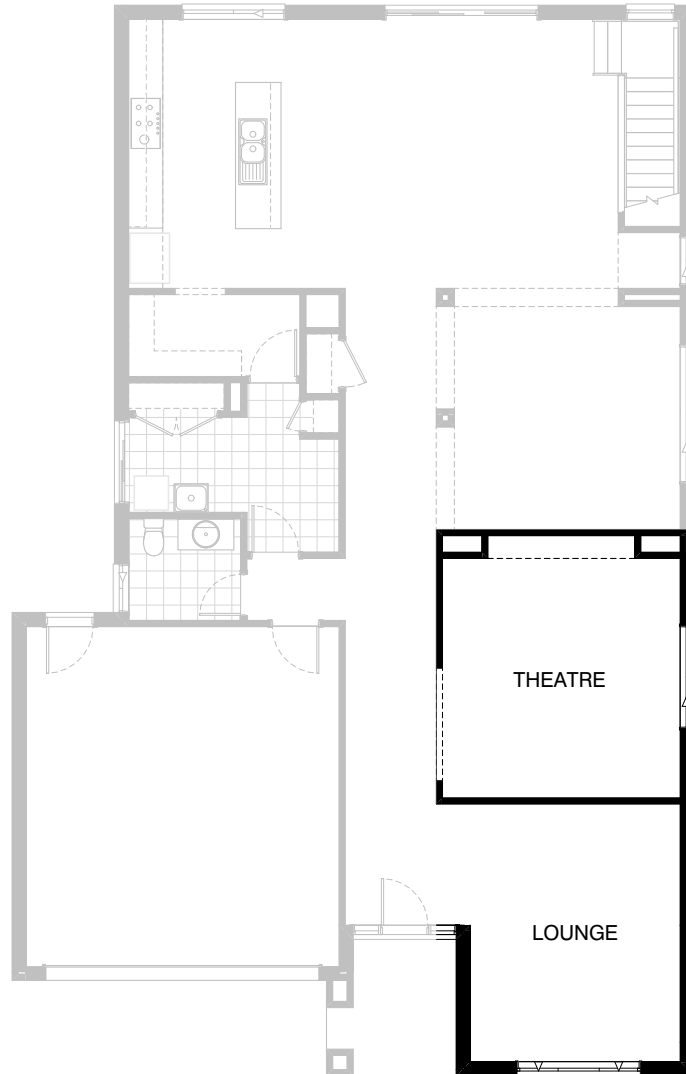


Option IP1-1 GF

Provide plastered wall infill to Rumpus with 1820mm wide opening with plastered bulkhead in lieu of standard columns.

FLOORPLAN OPTIONS

 **4**  **2.5**  **2**

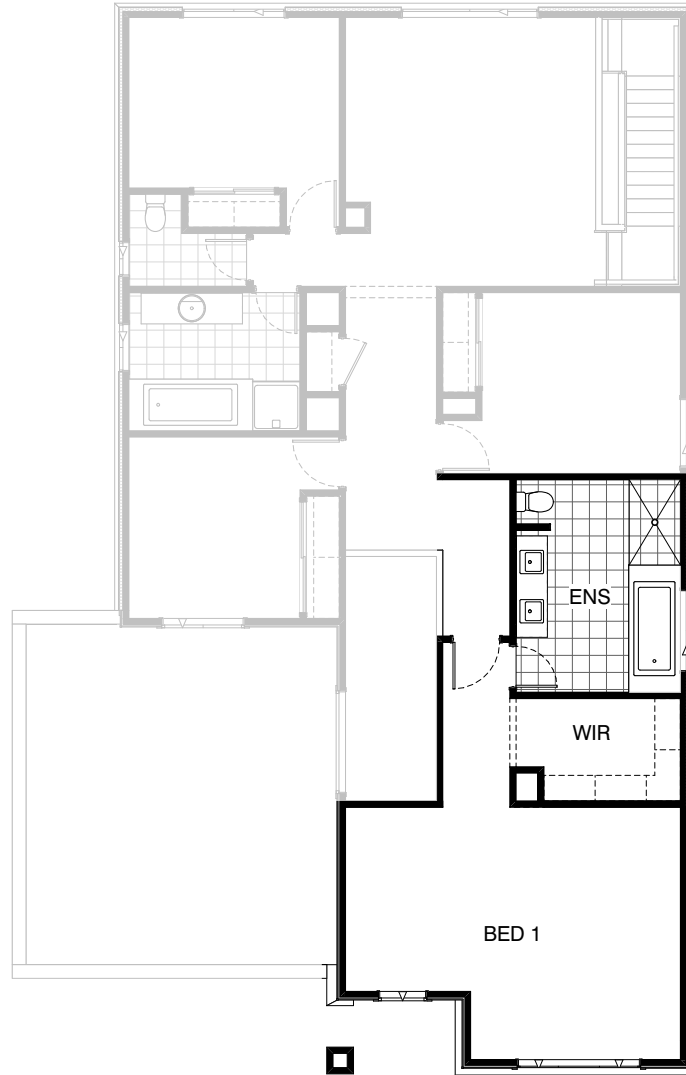


Option IP1-2 GF

Relocate Bed 1 / Ensuite / W.I.R to first floor and Lounge / Theatre to ground floor. Provide additional full height wall to Void perimeter due to location of Bed 1 door. Provide floor to ceiling ducts in ground floor theatre to accommodate plumbing stack to service relocated Ensuite.

FLOORPLAN OPTIONS




 **4**  **2.5**  **2**

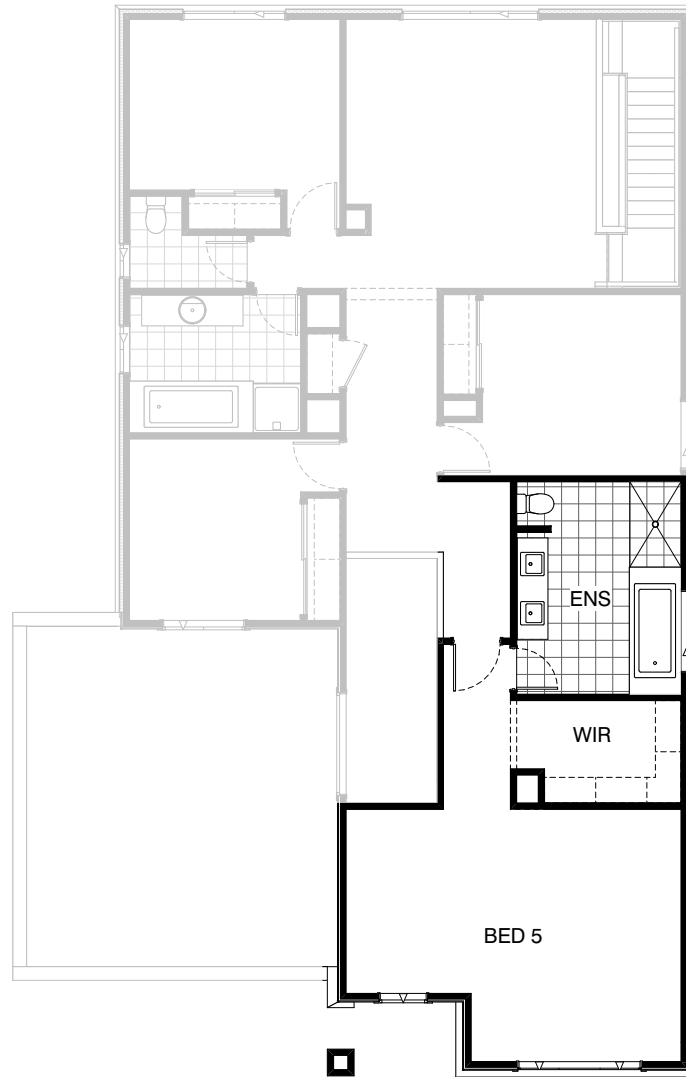


Option IP1-2 FF

Relocate Bed 1 / Ensuite / W.I.R to first floor and Lounge / Theatre to ground floor. Provide additional full height wall to Void perimeter due to location of Bed 1 door. Provide floor to ceiling ducts in ground floor Theatre to accommodate plumbing stack to service relocated Ensuite.

FLOORPLAN OPTIONS


 **4**  **2.5**  **2**

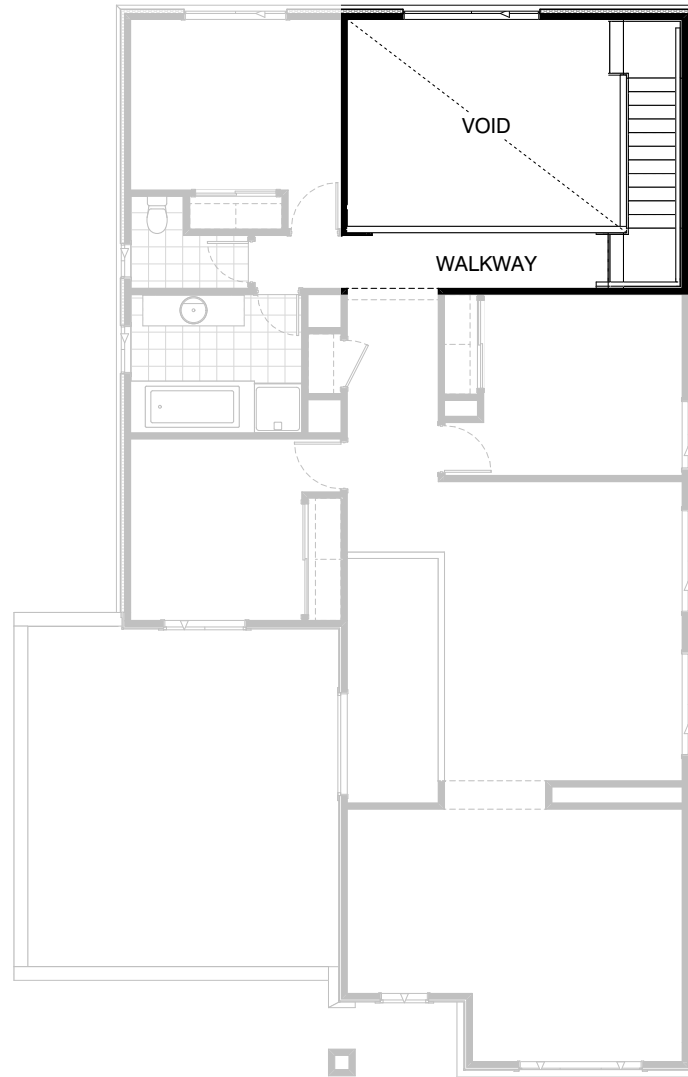


Option IP1-3 FF

Provide Bed 5, Ensuite and W.I.R to first floor in lieu of standard Lounge and Theatre. Provide additional full height plaster lined wall to Void perimeter due to location of Bed 5, 1no. 820mm flush panel hinged door, hanging rails and shelves to W.I.R, 1no. 1220mm plaster lined bulkhead above W.I.R opening, 1no. 720mm flush panel hinged door to Ensuite, Add additional basin to vanity unit, 1no. bath tub with tiled hob, 1500mm x 900mm tiled shower base, 1no. WC with site built plaster lined nib wall and 1no. 1200mm x 1450mm aluminium sliding window in lieu of standard 2no. 1200 x 1810 aluminium sliding windows to Lounge.

FLOORPLAN OPTIONS




 **4**  **2.5**  **2**

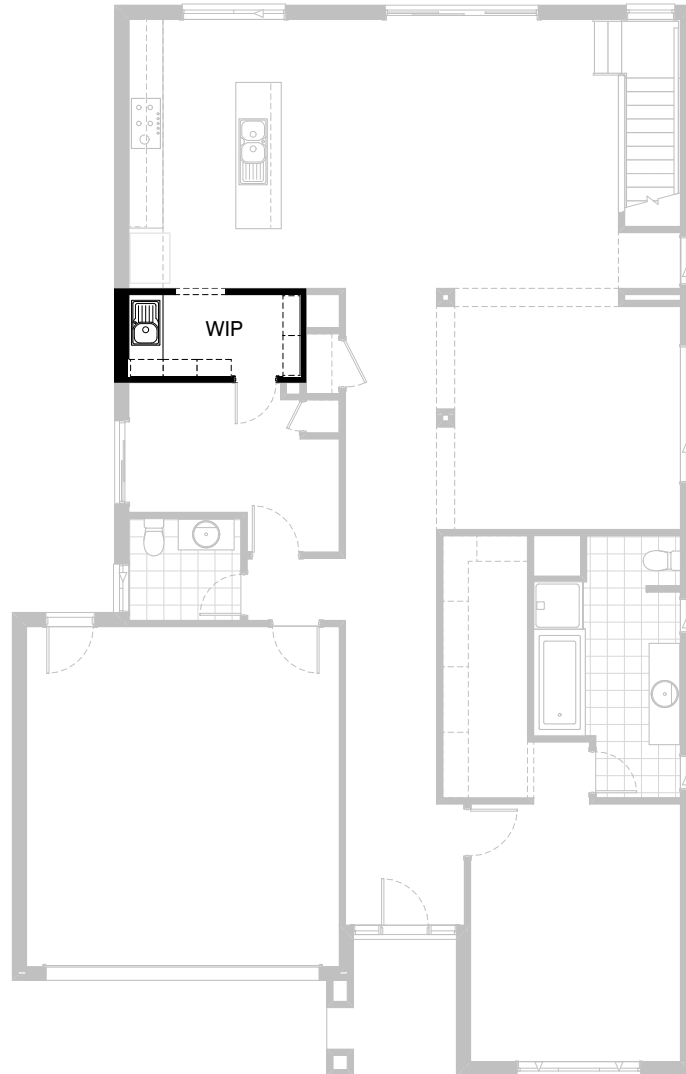


Option IP1-4 FF

Provide Void area above Family / Meals in lieu of Leisure with additional balustrade and relocate window by 240mm.

FLOORPLAN OPTIONS

 **4**  **2.5**  **2**

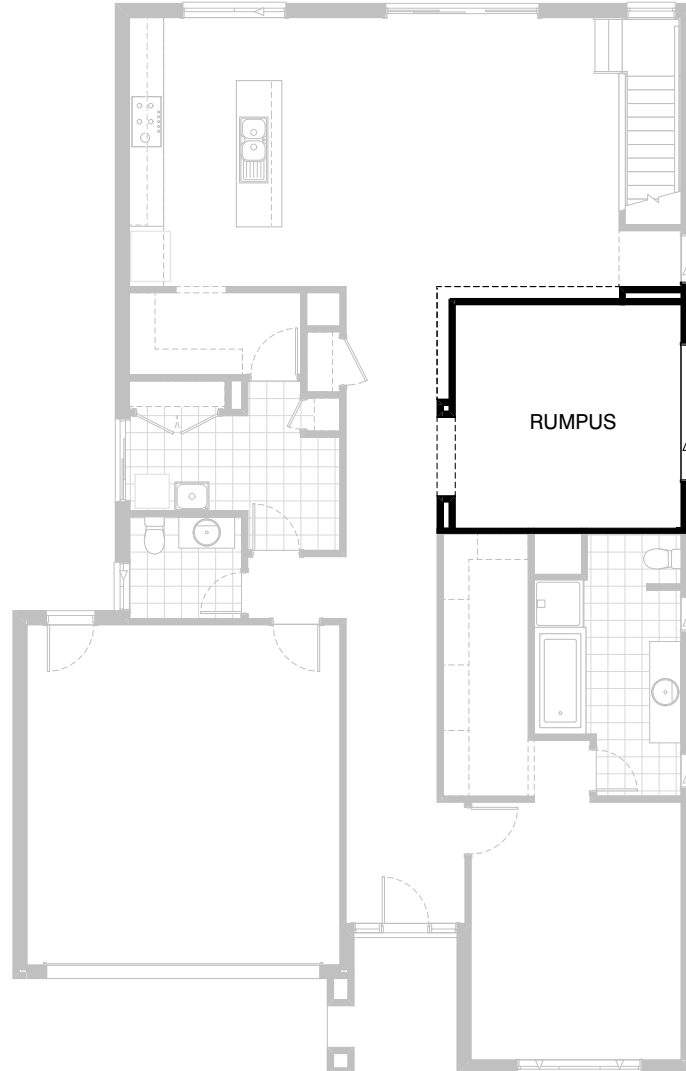


Option IP1-5 GF

Provide W.I.P Upgrade with 1no. 720mm flush panel hinged door in lieu of standard 1no. 820mm door, additional 1no. single bowl sink, 1no. 900mm base cabinet, 1no. 150mm base wine rack, 2no. 300mm deep laminated shelf units with 5no. shelves and relocate plumbing stack to suit.

FLOORPLAN OPTIONS

 **4**  **2.5**  **2**

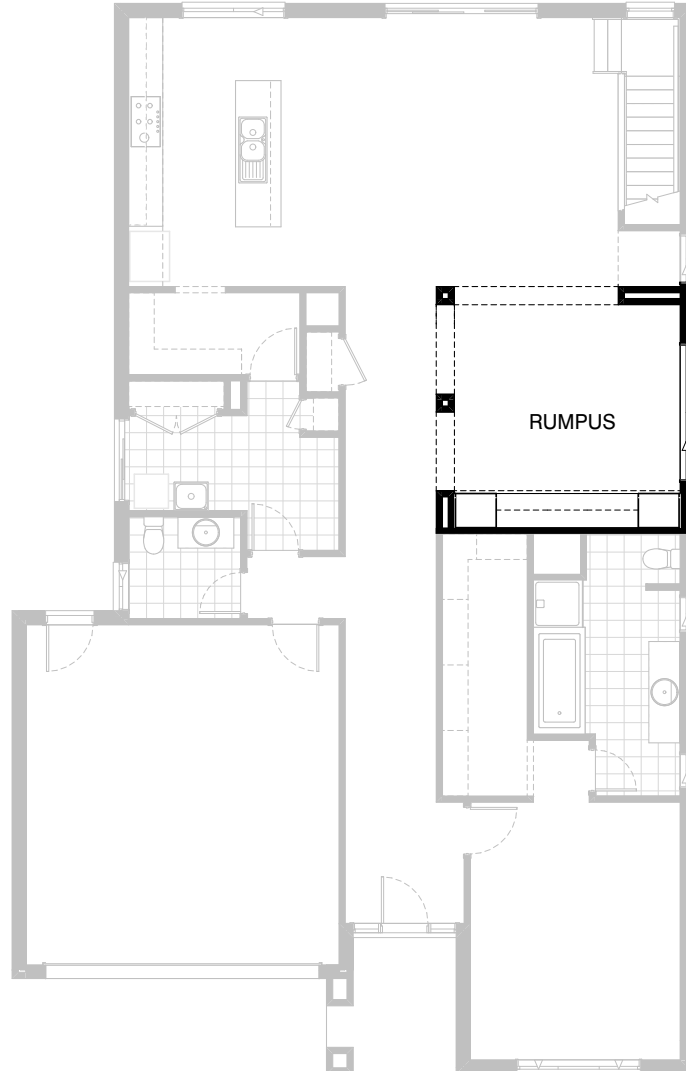


Option IP1-6 GF

Feature wall to Rumpus external corner by filling in 2no. openings with plastered wall and provide approximately a 200mm scalloped section in the wall creating a 1200mm high dwarf wall and bulkhead appearance and infill with Western Red Cedar cladding.

FLOORPLAN OPTIONS




 **4**  **2.5**  **2**

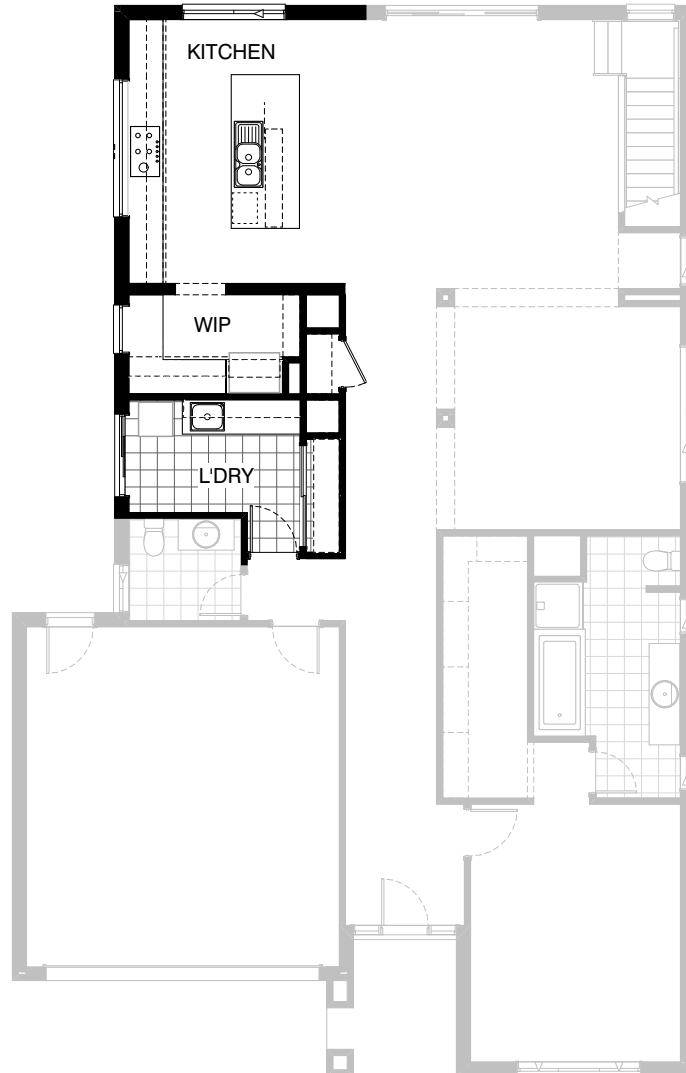


Option IP1-7 GF

Laminated cabinet Option to Rumpus room, 300mm deep plastered bulkhead, 2no. 700mm cupboards with adjustable shelves, 2no. 900mm drawers, 1no. 700mm drawer, 2no. 900mm overhead combination cupboards, 1no 700mm overhead combination cabinet with painted finish plasterboard opening.

FLOORPLAN OPTIONS

 **4**  **2.5**  **2**






Option IP1-8

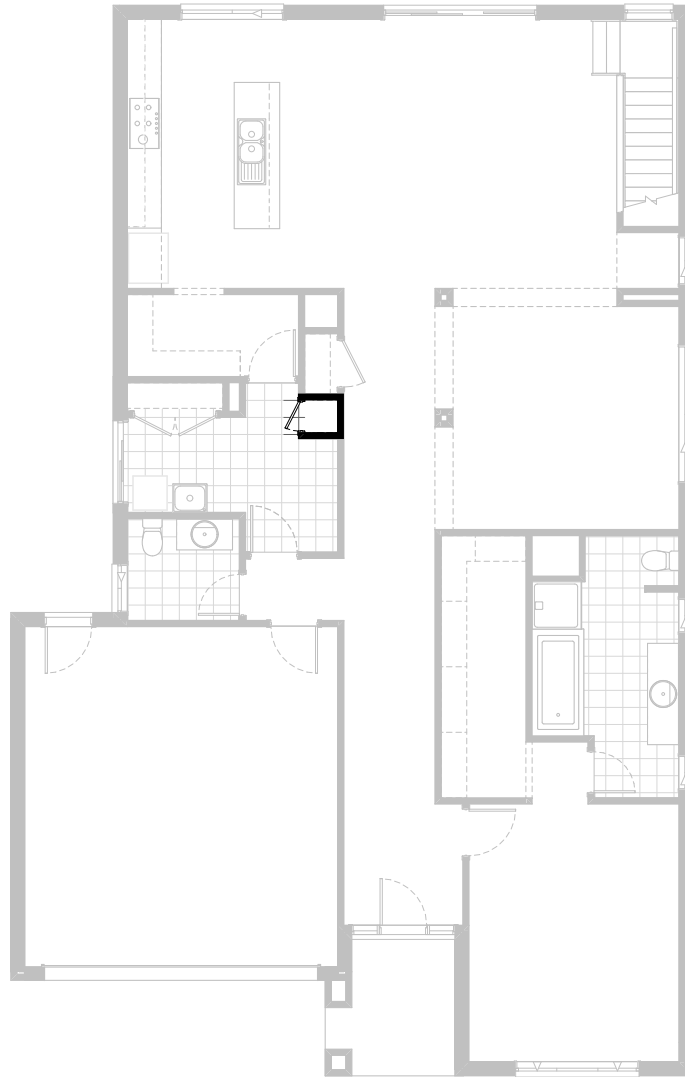
Provide Kitchen, Butler's Pantry and Laundry Option in lieu of standard.

Upgrade Kitchen with 20mm stone bench tops, 1200mm wide island bench, 1no. 450mm drawers integrated

DW. provision, MW. provision, 1no. 900mm base cabinet, 1no. 900mm base cabinet to the back of island bench, 4no. 900mm pot draw cabinets, 900mm underbench oven, 900mm cooktop, 900mm retractable rangehood with false panel, 4no. 900mm overhead combination cabinets, 514mm x 2410mm fixed window with no bottom reveal reveal finish. Increase W.I.P by 300mm, relocate ref. space to WIP and provide open shelf above ref. space, 900mm corner base cabinet, 2no. 800mm base cabinets, 1no. 700mm overhead cabinet, 1no. 350mm overhead cabinet, 1no. 600mm open shelves, Tiled splashback and 1543mm x 850mm fixed window with no bottom reveal finish. Reduce Laundry by 300mm and provide void in lieu of broom cupboard. Provide linen cupboard with 4no. 450mm shelves and sliding doors, 32mm laminate bench top with sink, 1no. 400mm base cabinet, 2no. 800mm base cabinets, 1no. 400mm overhead cabinet, 2no. 800mm overhead cabinets and tiled splashback to suit

FLOORPLAN OPTIONS




 **4**  **2.5**  **2**

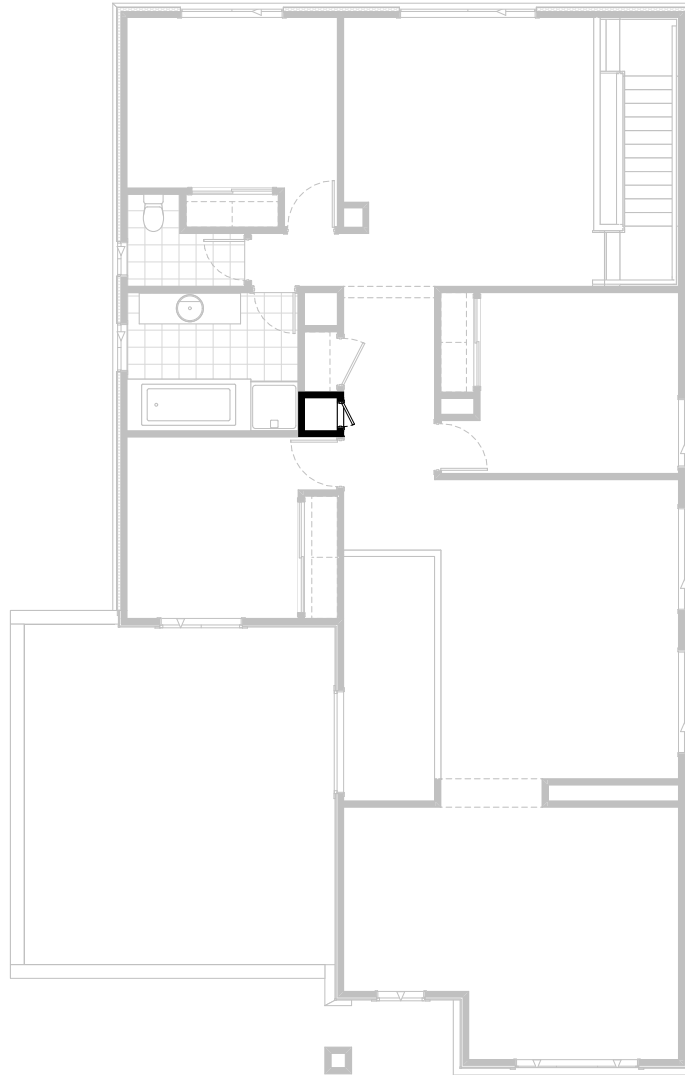


Option IP1-9 GF

Provide Laundry chute in lieu of Ground Floor broom cupboard and void space to First Floor

FLOORPLAN OPTIONS

 **4**  **2.5**  **2**

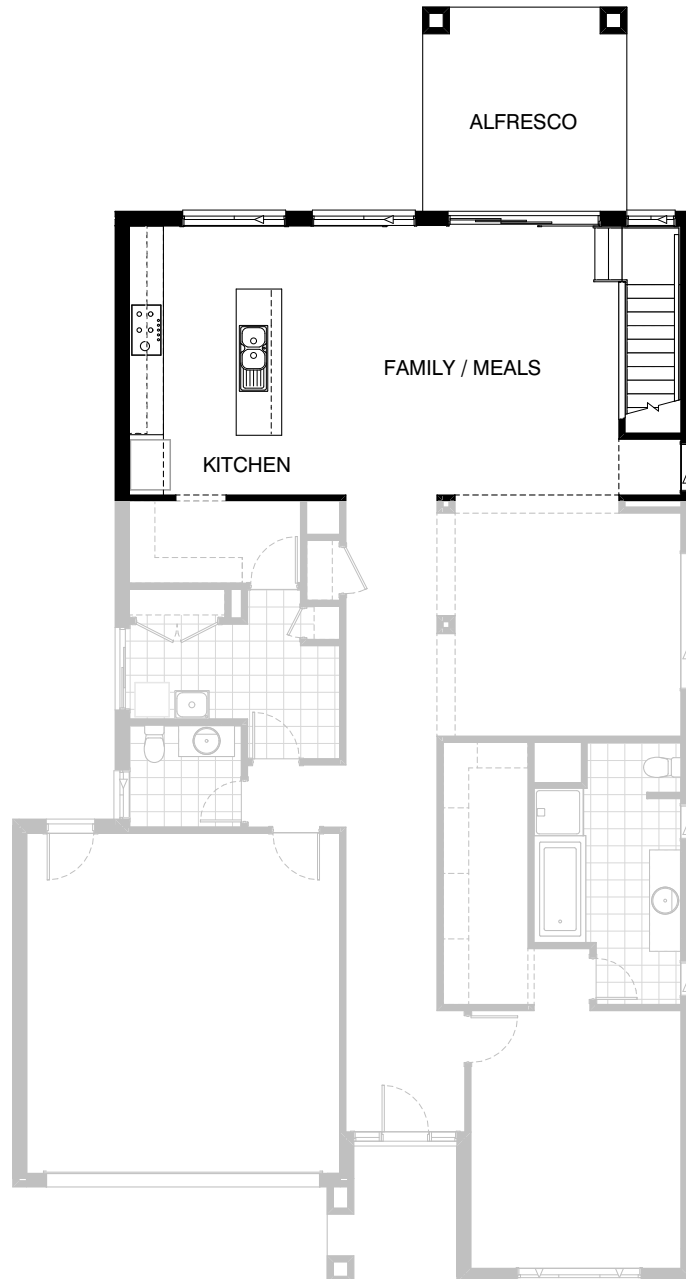


Option IP1-9 FF

Provide Laundry chute in lieu of Ground Floor broom cupboard and void space to First Floor

FLOORPLAN OPTIONS

 **4**  **2.5**  **2**

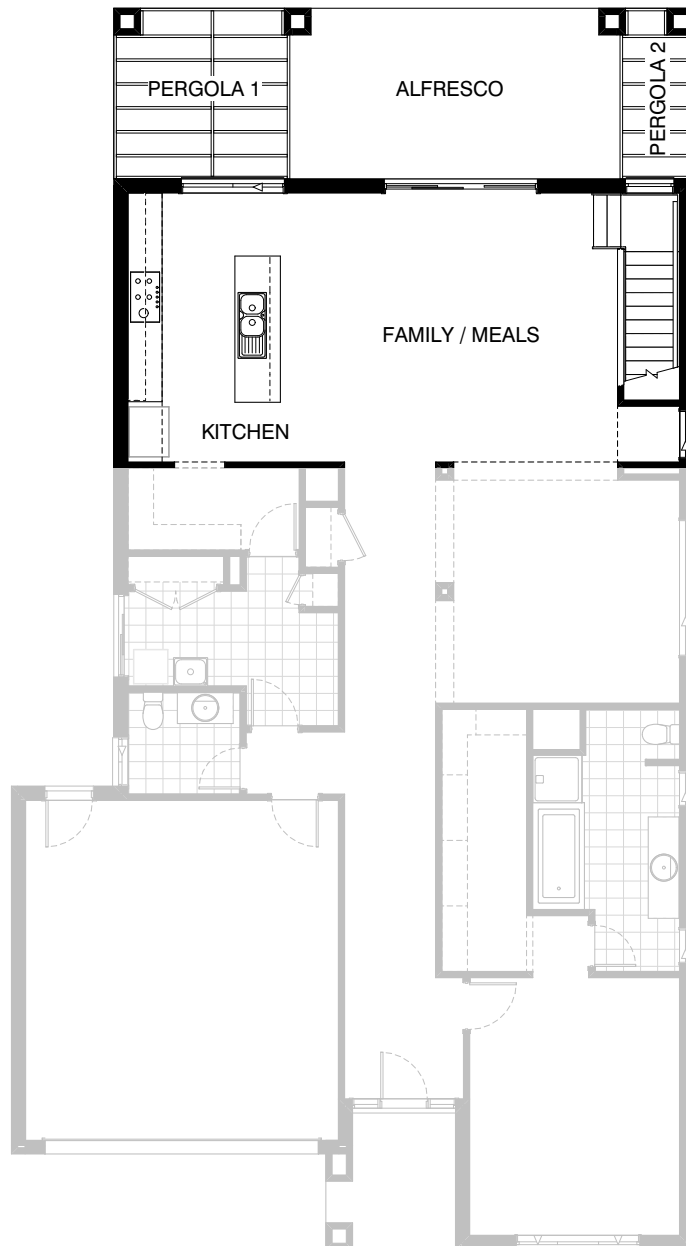


Option EP1-1

Provide 3600mm x 3590mm Alfresco under tiled pitched roof with 2no. 470mm x 470mm brick piers, painted plastered ceiling lining and 1no. batten light to rear of Family / Meals with relocation of Family / Meals door and additional 1no. 2057mm x 1810mm aluminium sliding window to suit.

FLOORPLAN OPTIONS

 **4**  **2.5**  **2**






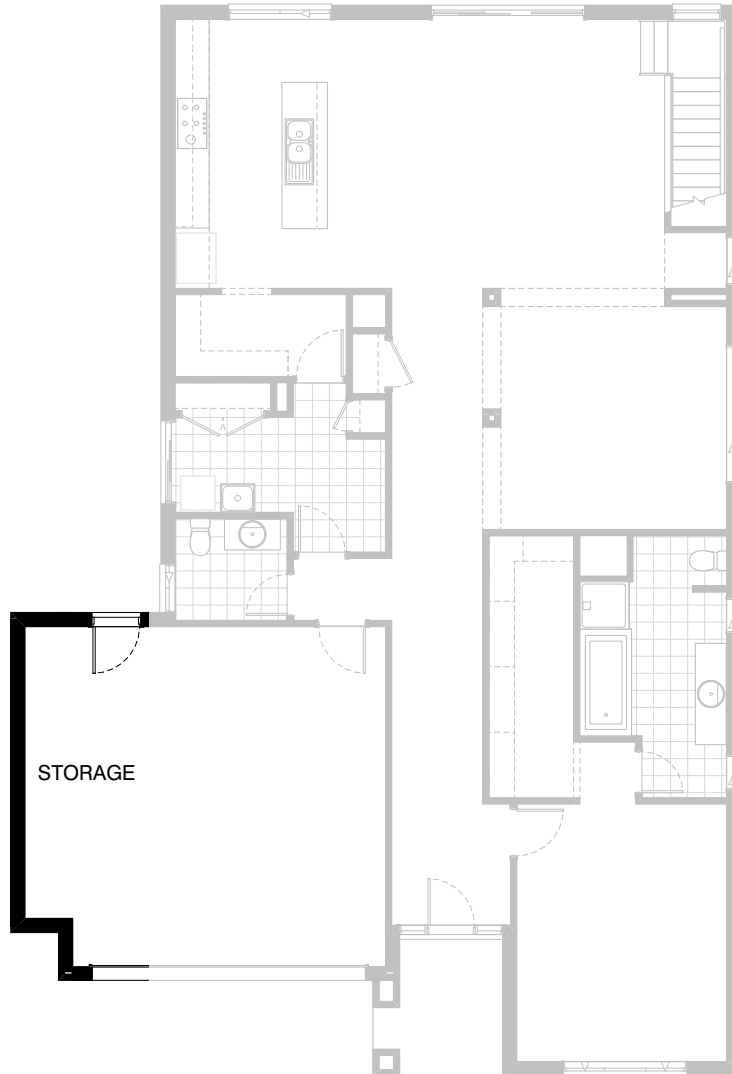
Option EP1-2

Provide Alfresco and attached Pergola to rear of the house with 4no. 470mm x 470mm brick piers, structural concrete, flat metal roof to Alfresco, painted 'Scyon Stria' parapet walls and 45mm x 190mm painted LOSP rafters and whaling plates to 2no. Pergolas

Total area of Alfresco and 2no. pergola's Increases area by 30.60m².

FLOORPLAN OPTIONS

 **4**  **2.5**  **2**






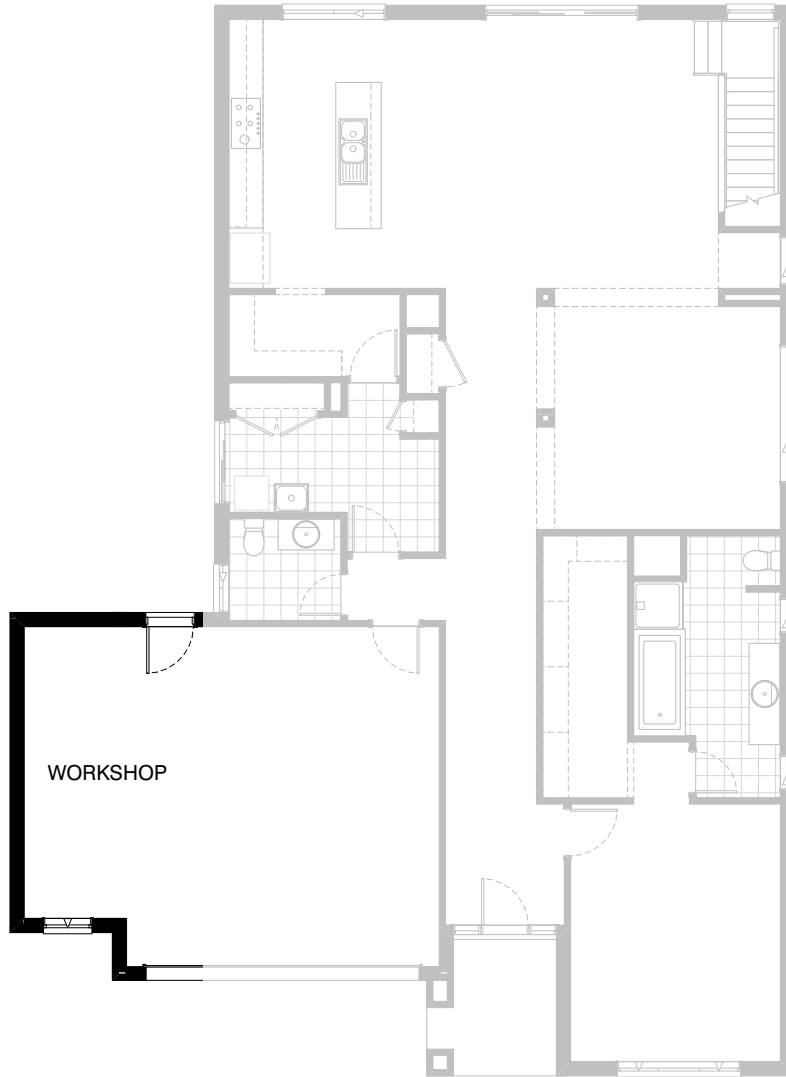
Option G-1

Provide extension to Garage to create additional Storage area.
Increases area by 4.73m².
Increases width by 840mm.

Note - Hester facade to be hip roof

FLOORPLAN OPTIONS

 **4**  **2.5**  **2**






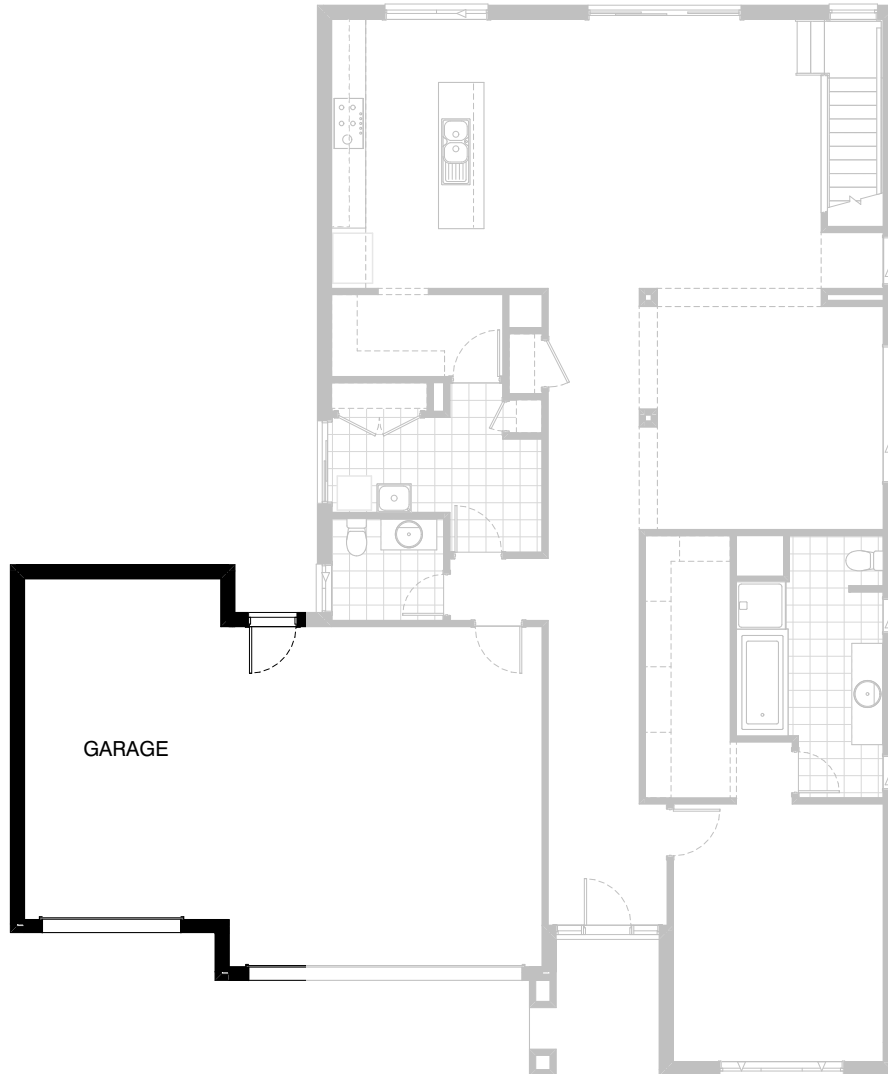
Option G-2

Provide extension to Garage to create additional Workshop area. Provide additional 2057mm x 850mm aluminium awning window
Increases area by 10.13m².
Increases width by 1800mm.

Note - Hester facade to be hip roof

FLOORPLAN OPTIONS

 **4**  **2.5**  **2**



Option G-3

Provide triple garage option including additional garage door as per colour selection. Provide pitched roof over garage to facades with hips over garage including additional downpipe.

Increases area by 23.69m².
Increases width by 3600mm.

Note - Hester facade to be hip roof