

Facades available:	
Coastal, Delta, Kingston, Nouveau	
Salisbury, Traditional, York	
Overall home width	11.36m
Overall home length	20.75m

Residence	150.2m ²	16.2sq
Garage	37.4m ²	4.0sq
Porch	3.4m ²	0.4sq
Alfresco	10.3m ²	1.1sq
Total	201.3m²	21.7sq

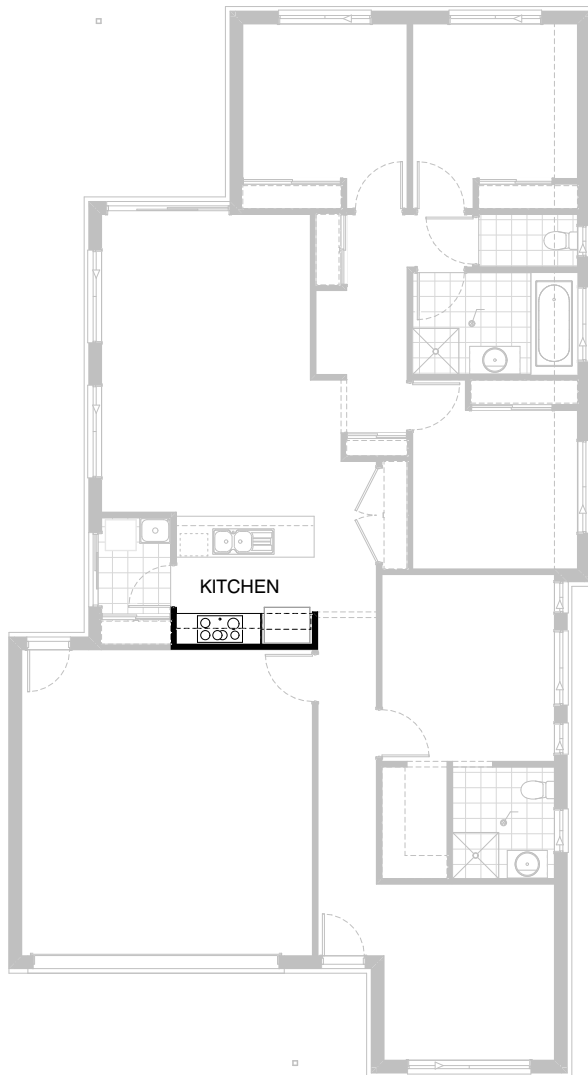
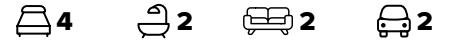
FLOORPLAN OPTIONS

We personalise our floorplans. Talk to us about our huge range of ready-to-go design options.

Listed details based on Traditional facade floorplan (illustrated)

*Copyright conditions. All photos and illustrations are representative only. Floor plans and specifications may be varied by Burbank without notice, the dimensions are diagrammatic only and a Building Contract with final drawings will display correct dimensions and detail. All designs are the property of Burbank and must not be used, reproduced, copied or varied, wholly or in part without written permission from an authorised Burbank representative. Copyright Burbank Australia (QLD) Pty Ltd. ABN 77 103 014 615. QBCC 1046544.

Call 13 BURBANK
Visit burbank.com.au



Option Kitchen01

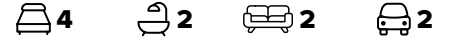
- Provide 2No. 350mm wide overhead cabinets to Kitchen
- Provide 1No. 900mm wide overhead cabinet with slide-out rangehood
- Provide 475mm high laminate open shelf to refrigerator alcove
- Provide 16mm laminate side panel to refrigerator alcove



Option Kitchen02

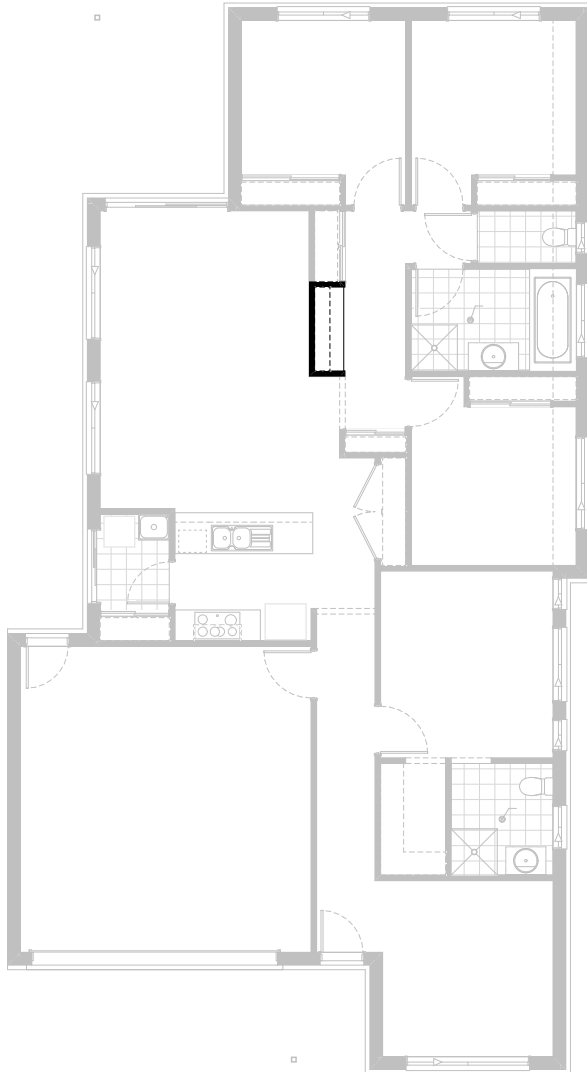
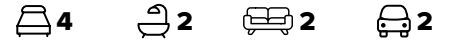
Delete enclosed Pantry
Provide 1No. 900mm base cabinet,
1No. 450mm base cabinet with
2No. 350mm overhead cabinets and
2No. additional full height Pantry cabinets 700mm wide,
additional benchtop and tiled splashback to suit.

NOTE: Only available with Option External01



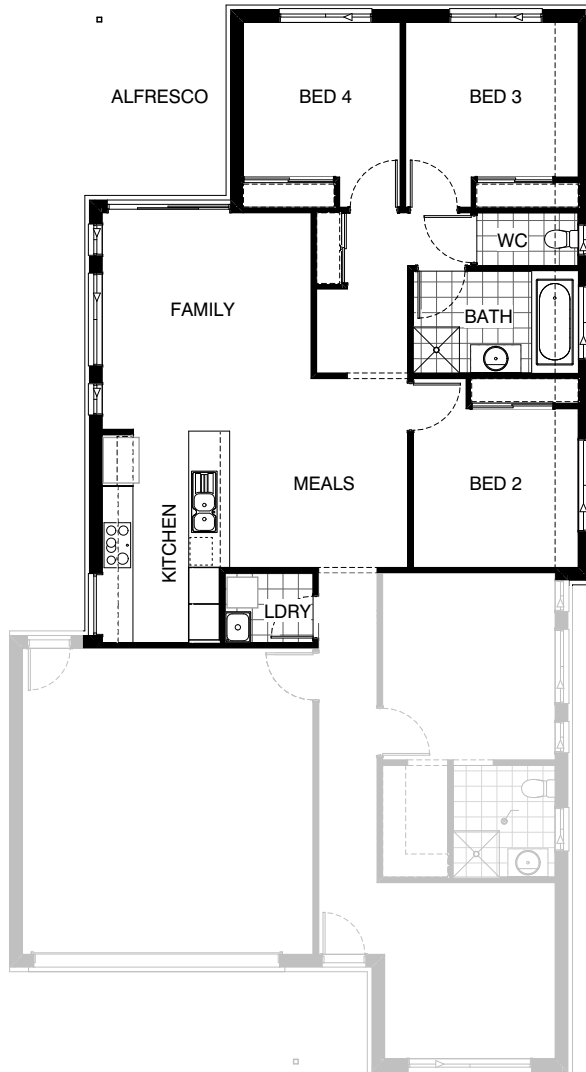
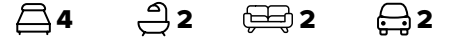
Option External01

Provide plan option as follows:
 Rear of house mirrored to provide alternative exposure for Alfresco Laundry moved to adjacent the Alfresco.
 Kitchen island bench converted to partially abut wall. benchtop changed accordingly. Splashback to suit
 Provide WIP with ASW 1809 in lieu of Pantry
 Beds 2, 3 and 4 relocated
 Bathroom/WC re-planned and relocated
 Provide 782mm wide vanity with single basin to bathroom in lieu 982mm wide vanity unit with single basin.
 Alfresco and Family/Meals relocated
 Provide ASD2121 to Family/Alfresco in lieu of standard.
 Provide AED2108 external access door to Laundry in lieu of ASD2115 sliding door
 Additional hip and valley to roof



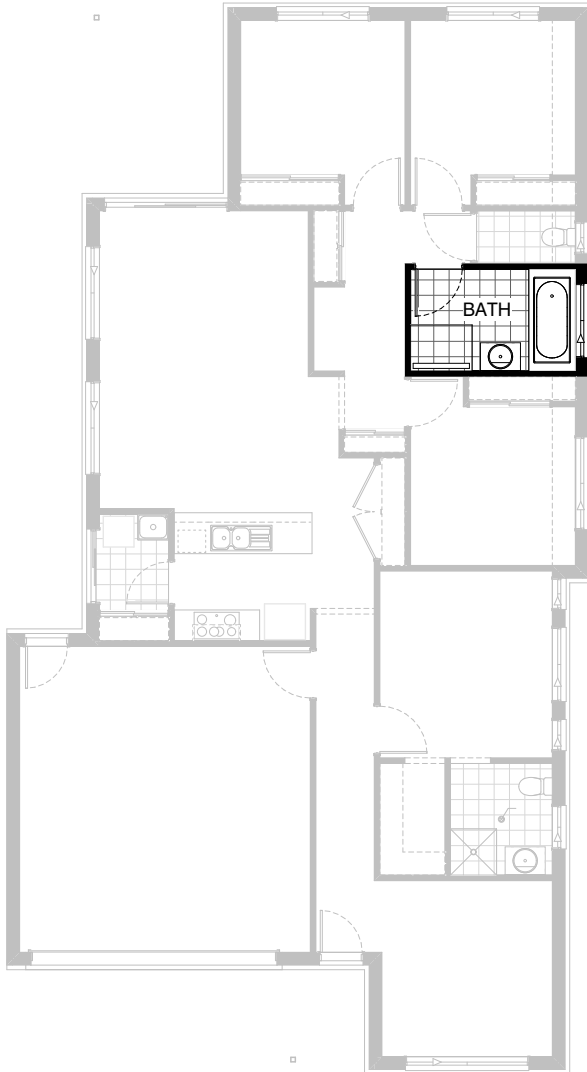
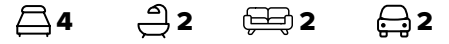
Option Internal01

Provide built-in joinery to Study nook as follows:
600mm wide x 32mm thick laminate desk top
2no 300mm wide x 60mm thick laminate shelves
one set of drawers 450mm wide below desk top



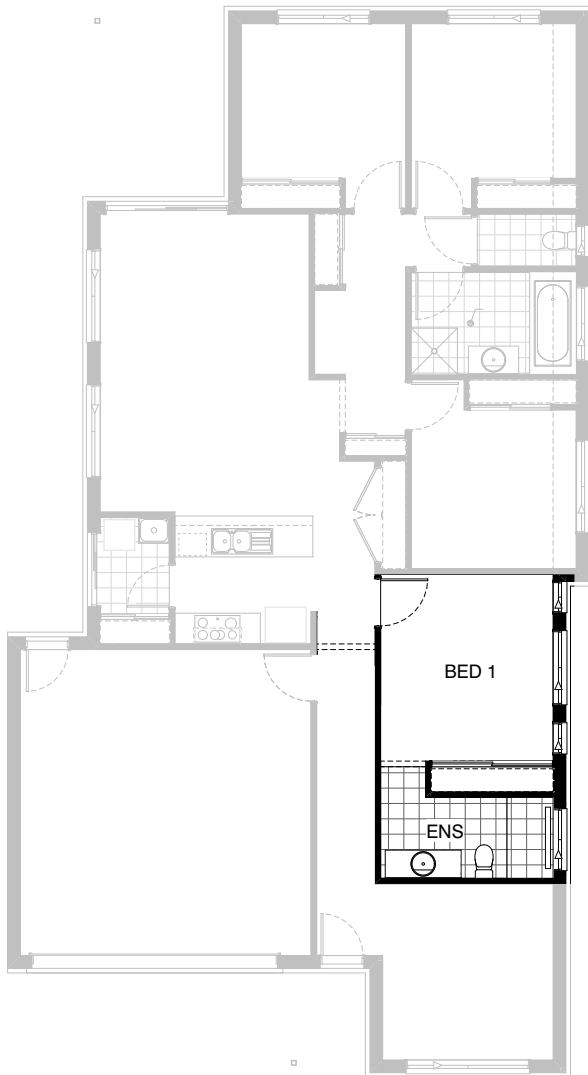
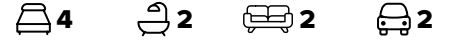
Option Internal02

Provide floor plan option which rotates the Kitchen and provides internal Laundry including:
 1 no linen cupboard deleted
 Built-in pantry cupboard deleted
 Laundry relocated with trough and cabinet.
 Kitchen relocated.
 To Kitchen:
 Provide 3No. additional base cabinets 700mm wide with benchtop and splashback to suit.
 Provide 2No. full height cabinets nom 700mm wide.
 Provide 3No. overhead cabinets nom 700mm wide
 Provide 900mm wide overhead cabinet with slide out rangehood
 Provide 475mm high open laminate shelf to refrigerator alcove
 Provide 16mm thick laminate side panel to refrigerator alcove
 Delete ASD2115
 Add ASW0512 above Kitchen bench
 To Family/Meals:
 Delete 1 no ASW1818
 Add 2 no ASW1806



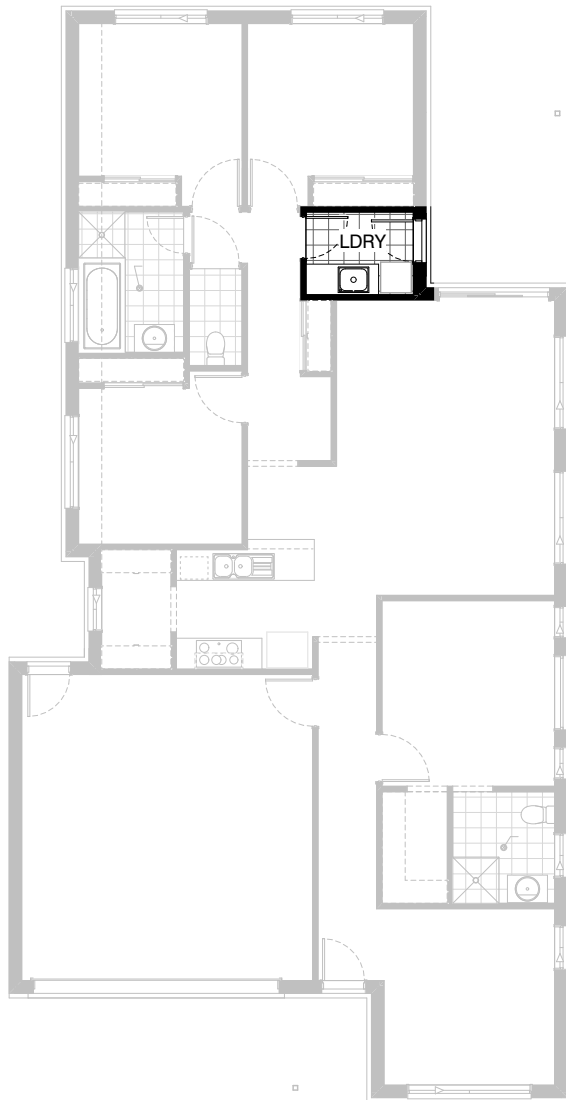
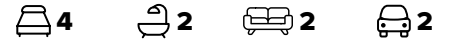
Option Internal03

Provide bathroom option as follows:
782mm vanity and 1200x900mm
tiled shower base with grate drain in
lieu of standard.



Option Ensuite02

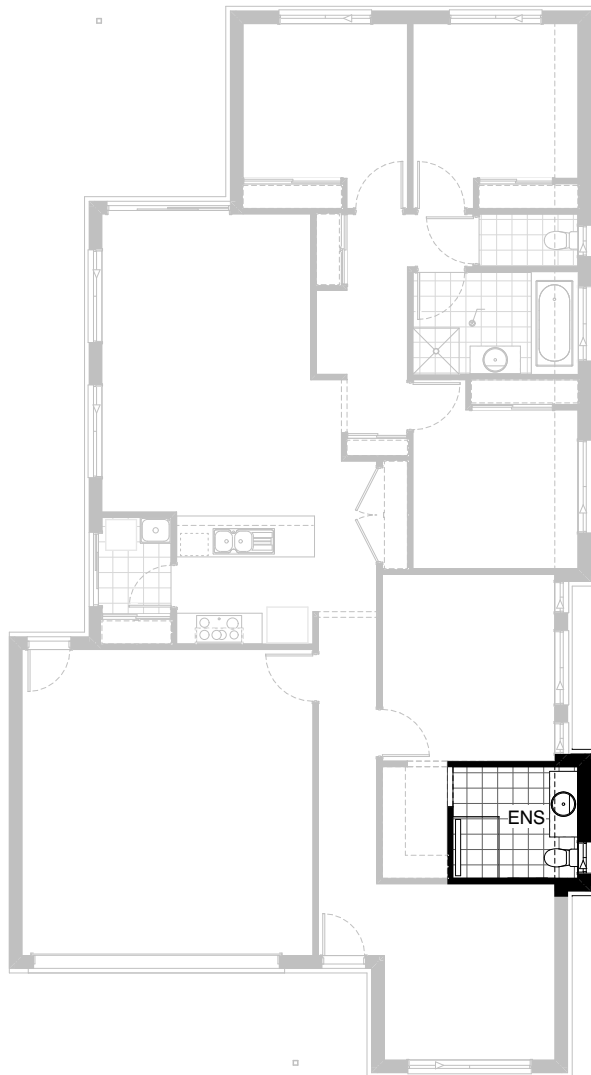
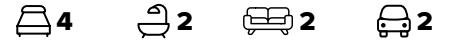
Provide Ensuite upgrade including:
Delete WIR
Provide standard Robe nom 2400 wide with gyprock sliders to underside ceiling
Provide tiled shower base 1600x900mm in lieu 900x900 tiled shower base with grate drain
Relocate WC
1482mm wide vanity with single basin in lieu 782mm wide vanity with single basin.
Hinged door to Bed 1 and bulkhead to Passage move as shown.



Option Laundry01

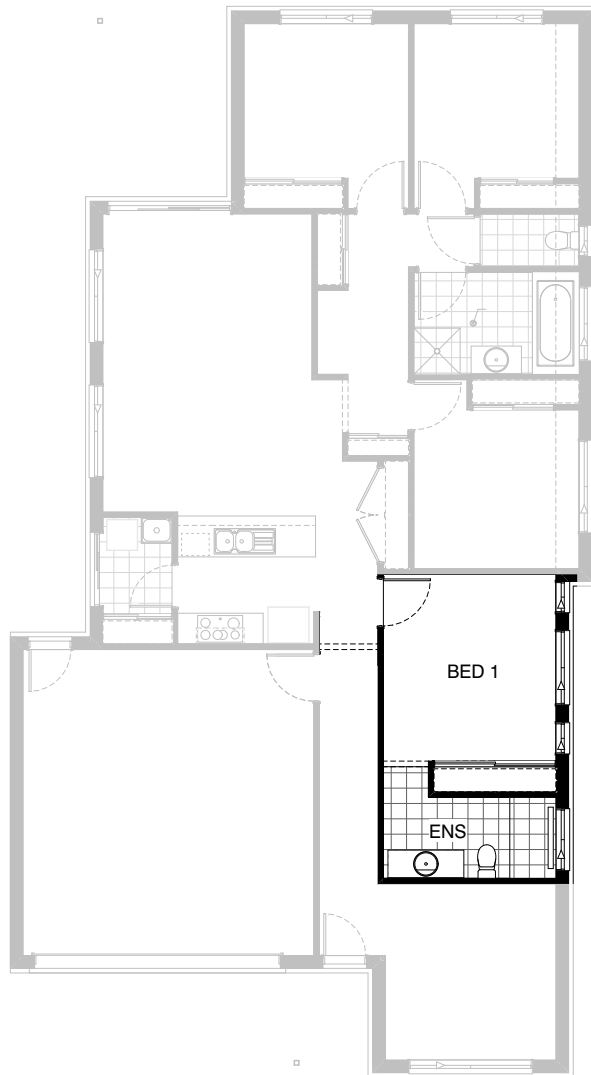
Provide Laundry upgrade including stainless steel inset trough
1No. 900mm wide base cupboard,
1No. 450mm wide base cupboard,
1No. 900mm wide overhead cupboard
1No. 450mm wide overhead cupboard, additional benchtop and tiled splashback to suit.

Only available with Option External01



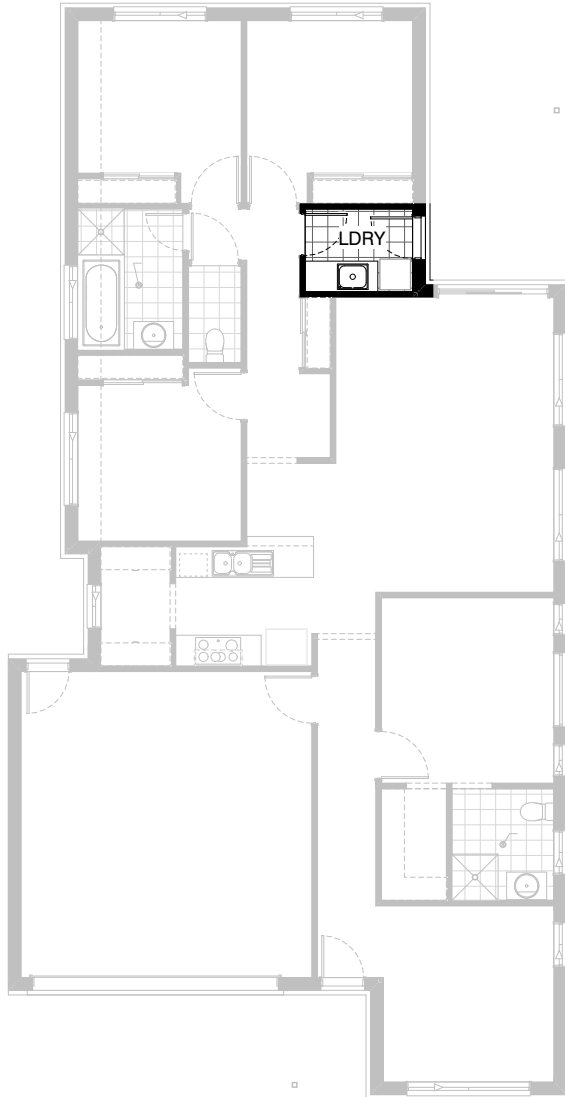
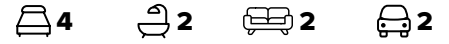
Option Ensuite01

Provide Ensuite upgrade including:
Extend floor area under eaves by 450mm. Adds 1.21 sqm.
Relocate WC
Delete window ASW1809
Add window ASW 1006
1282mm wide vanity with single basin and 1200x900mm tiled shower base with grate drain in lieu of standard
Option also moves entry to Ensuite as shown.



Option Ensuite02

Provide Ensuite upgrade including:
Delete WIR
Provide standard Robe nom 2400 wide with gyprock sliders to underside ceiling
Provide tiled shower base 1600x900mm in lieu 900x900 tiled shower base with grate drain
Relocate WC
1482mm wide vanity with single basin in lieu 782mm wide vanity with single basin.
Hinged door to Bed 1 and bulkhead to Passage move as shown.



Option Laundry01

Provide Laundry upgrade including stainless steel inset trough
1No. 900mm wide base cupboard,
1No. 450mm wide base cupboard,
1No. 900mm wide overhead cupboard
1No. 450mm wide overhead cupboard, additional benchtop and tiled splashback to suit.

Only available with Option External01