




Total squares **20.5sq**

 **4**  **2**  **1**



FLOORPLAN OPTIONS

All available ready-to-go floorplan options for this design can be viewed on the following pages, or visit www.burbank.com.au.

Facades available:

Drysdale, Arkley, Nolan	
Dowd, Haring	
Overall home width	8.63m
Overall home length	25.19m




Residence	161.6m ²	17.4sq
Garage	23.7m ²	2.6sq
Porch	4.7m ²	0.5sq
Total	190.0m²	20.5sq

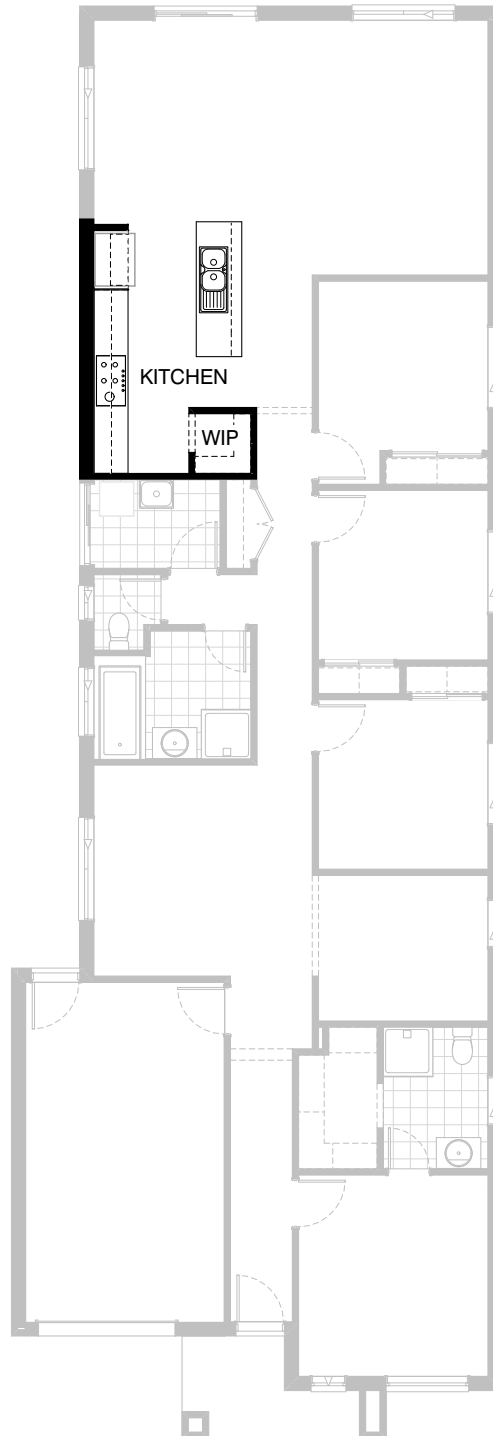
Listed details based on Drysdale façade floorplan (illustrated)

*Copyright conditions. All photos and illustrations are representative only. Floor plans and specifications may be varied by Burbank without notice, the dimensions are diagrammatic only and a Building Contract with final drawings will display correct dimensions and detail. All designs are the property of Burbank and must not be used, reproduced, copied or varied, wholly or in part without written permission from an authorised Burbank representative. Copyright Burbank Australia Pty Ltd. ABN 91 007 099 872. Builders Registration Number CDB-U-52603.

Call 13 BURBANK
Visit burbank.com.au

FLOORPLAN OPTIONS




 **4**  **2**  **1**

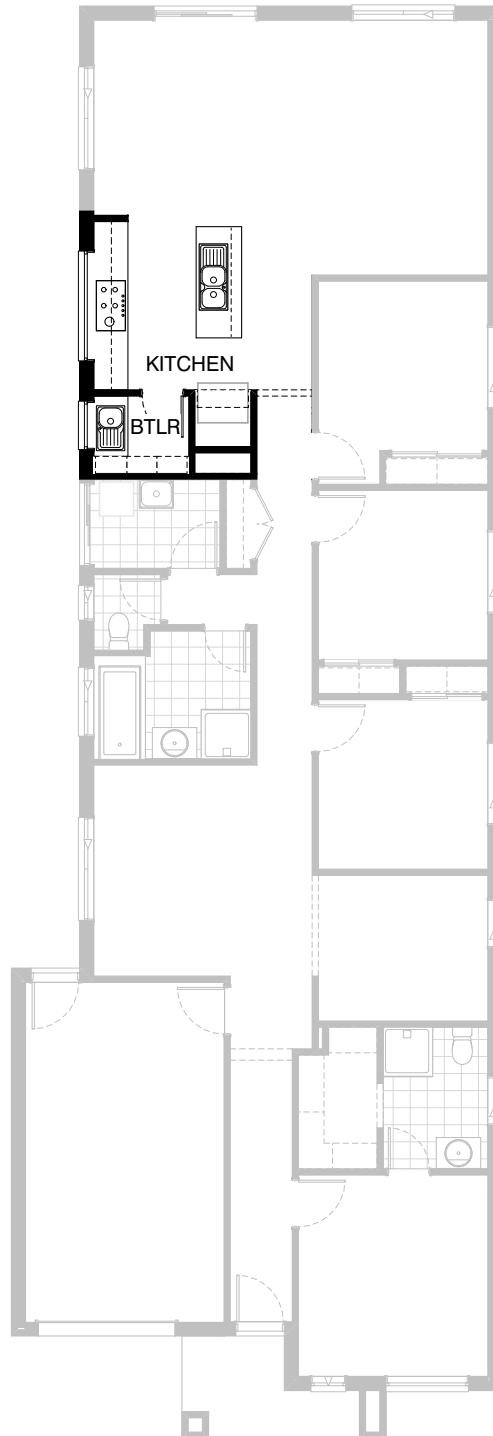


Option K-1

Provide Kitchen Option with 1no. laminated Open shelf above refrigerator space, 3no. 800mm base cupboards, 2no. 350mm base cupboards, 2no. 800mm overhead cupboards, 2no. 350mm overhead cupboards, 1no. under bench oven, 1no. 900mm cook top, 1no. retractable rangehood, 1no. 450mm drawers, 1no. laminated DW provision and 1no. 400mm base cupboard. Provide tiled splash back and bench top to suit.

FLOORPLAN OPTIONS

 **4**  **2**  **1**






Option K-2

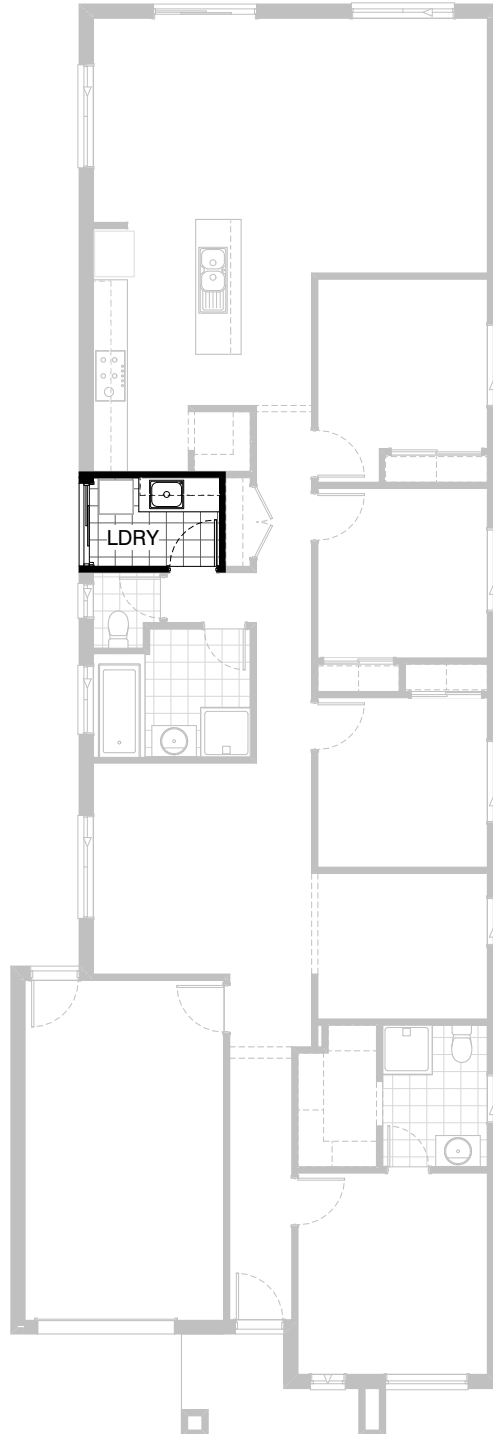
Provide Kitchen / Butlers pantry Option with 1no. laminated Open shelf above refrigerator space, 1no. 450mm drawers, 1no. laminated DW provision and 1no. 800mm base cupboard, 3no. 700mm base cupboards, 3no. 300mm base cupboards, 2no. 700mm overhead cupboards, 2no. 300mm overhead cupboards, 1no. 900mm under bench oven, 1no. 900mm cook top, 1no. 900mm overhead cupboard with retractable rangehood, Provide 1no. 850mm x 1200mm & 1930mm x 514mm no bottom reveal aluminium fixed window to butler pty & Kitchen, 1800mm high open adjustable shelves, 1no. single bowl sink with drainer and tiled splash back and bench top to suit.

*Copyright conditions. All photos and illustrations are representative only. Floor plans and specifications may be varied by Burbank without notice, the dimensions are diagrammatic only and a Building Contract with final drawings will display correct dimensions and detail. All designs are the property of Burbank and must not be used, reproduced, copied or varied, wholly or in part without written permission from an authorised Burbank representative. Copyright Burbank Australia Pty Ltd. ABN 91 007 099 872. Builders Registration Number CDB-U-52603.

Call 13 BURBANK
Visit burbank.com.au

FLOORPLAN OPTIONS




 **4**  **2**  **1**

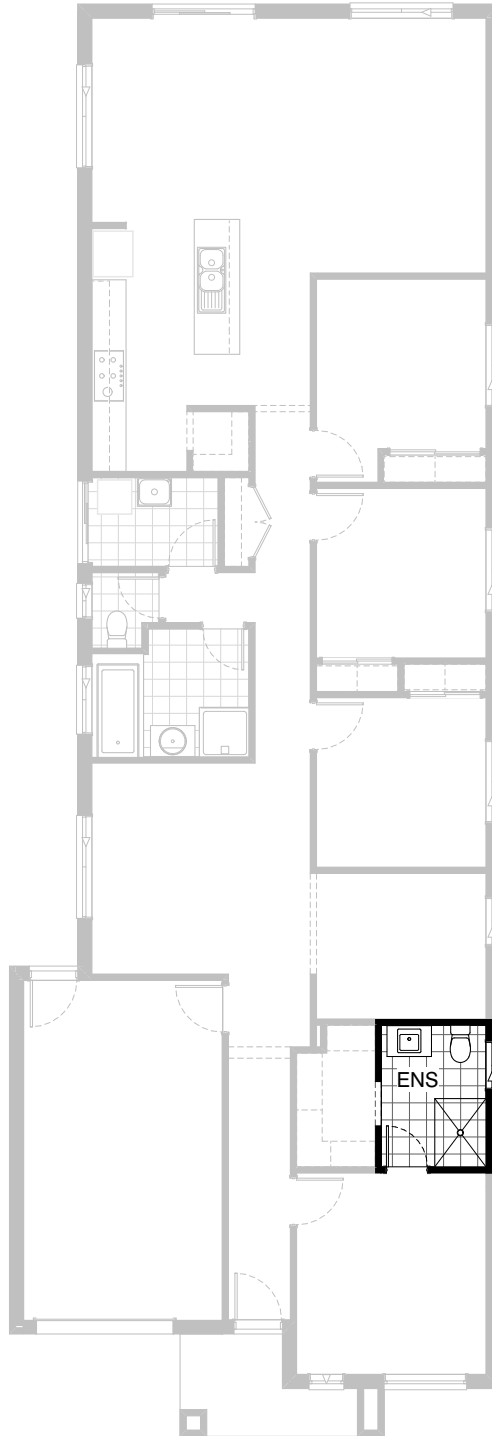


Option LD-1

Provide Laundry upgrade with s.s. inset trough in laminated benchtop, 1no. 900mm base cupboard, 1no. 450mm base cupboard, 1no. 900mm overhead cupboard, 1no. 450mm overhead cupboard and additional tiled splash back and bench top to suit.

FLOORPLAN OPTIONS




 **4**  **2**  **1**

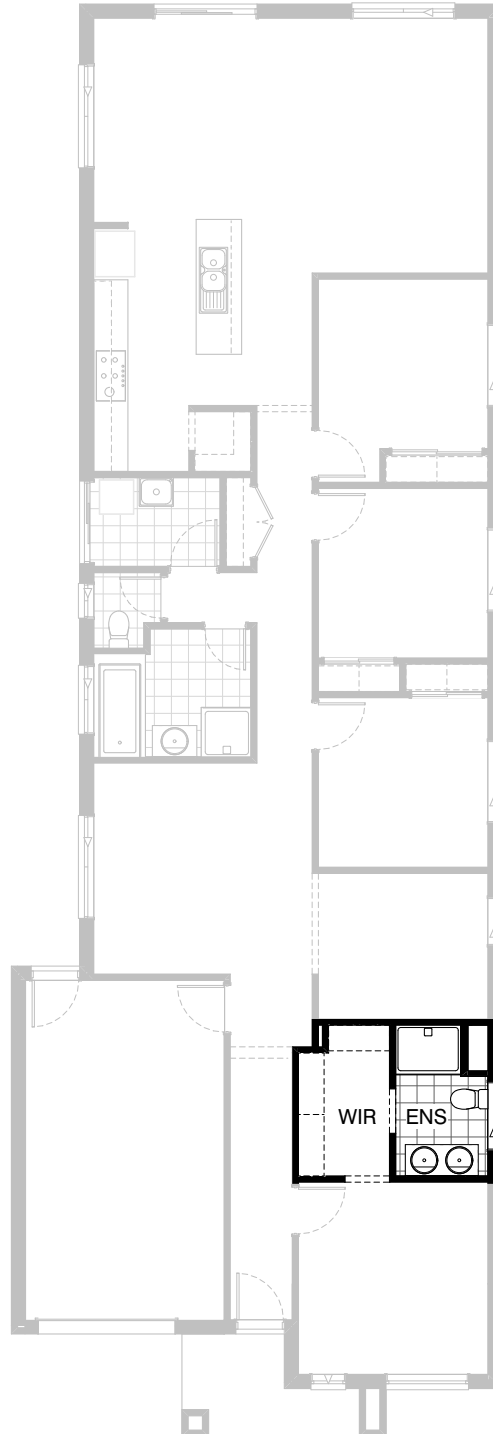


Option ENS-1

Provide Ensuite upgrade including 1200mm x 900mm tiled shower base with relocation of vanity and window

FLOORPLAN OPTIONS




 **4**  **2**  **1**

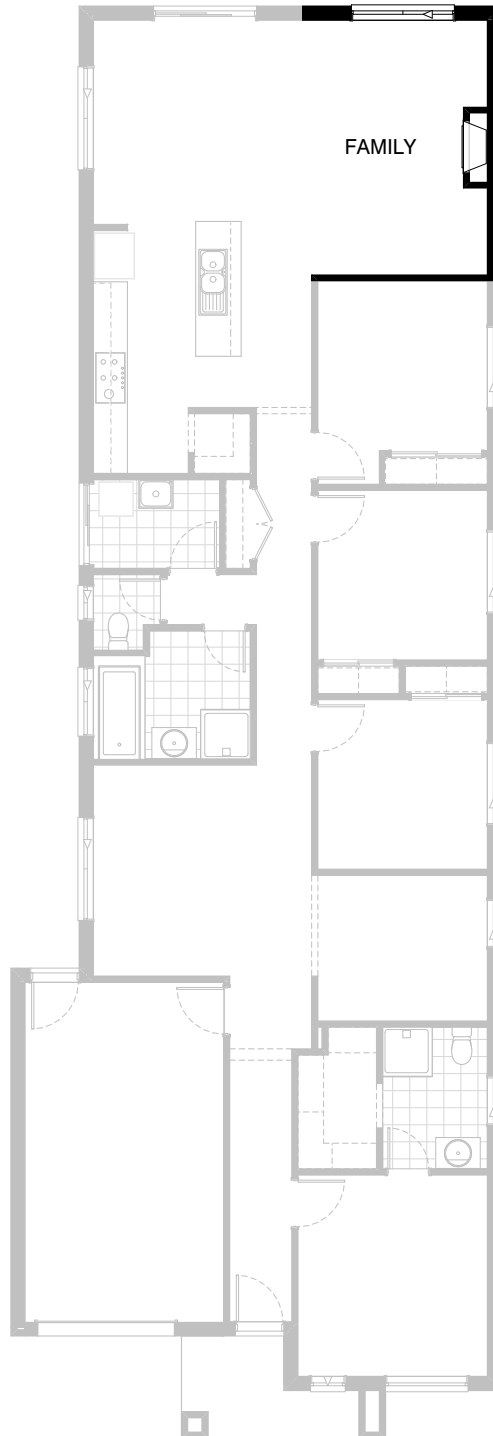


Option ENS-2

Provide Ensuite Option with additional 1no. 900mm x 1200mm polymarble shower base, 1no. 1282mm wide vanity unit with 2no. basins and 1no. 1200mm x 1210mm aluminium sliding window. Decrease Bed 1 length by 160mm and increase WIR and Ensuite to suit, increase WIR width by 220mm and decrease Ensuite width to suit and delete 1no. 720mm hinged door to Ensuite and provide 1no. 800mm wide opening to suit.

FLOORPLAN OPTIONS

 **4**  **2**  **1**

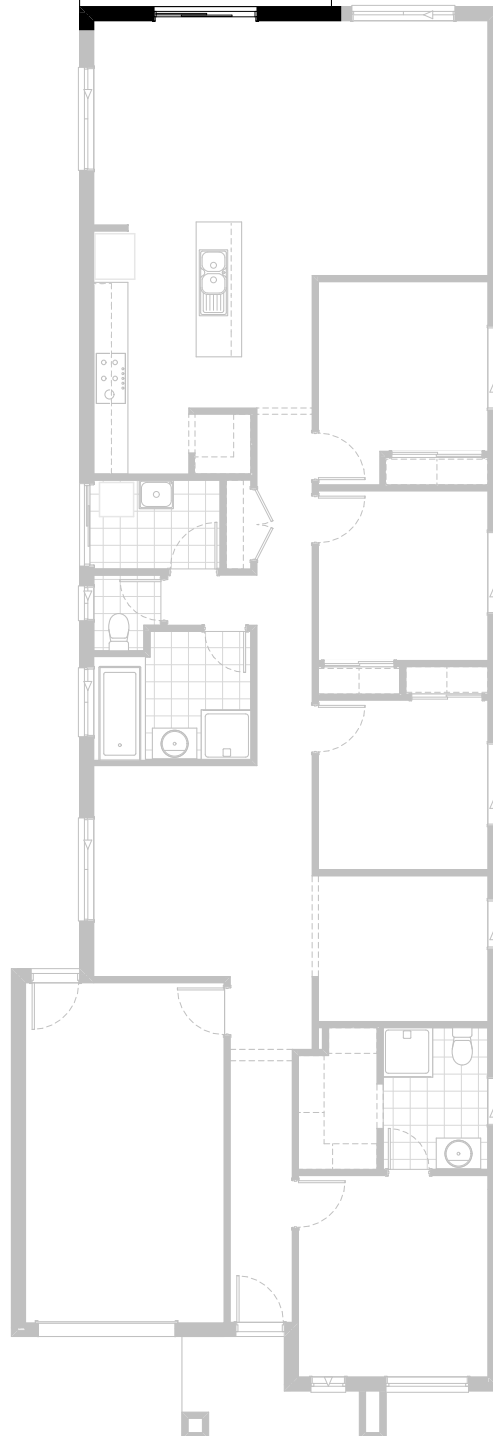


Option IP1-1

Provide Jetmaster 3X series gas fireplace, 400mm off floor level in a 1400mm x 420mm boxed out plaster wall with a 4 sided black fascia to Family room side wall.

FLOORPLAN OPTIONS

ALFRESCO






Option EP1-1

Provide Alfresco to rear of Meals with tiled hip roof, structural concrete floor, light point and 2no. 470mm x 470mm brick piers.

Increases area by 14.35m².
Increase length by 3240mm.

FLOORPLAN OPTIONS

 **4**  **2**  **1**






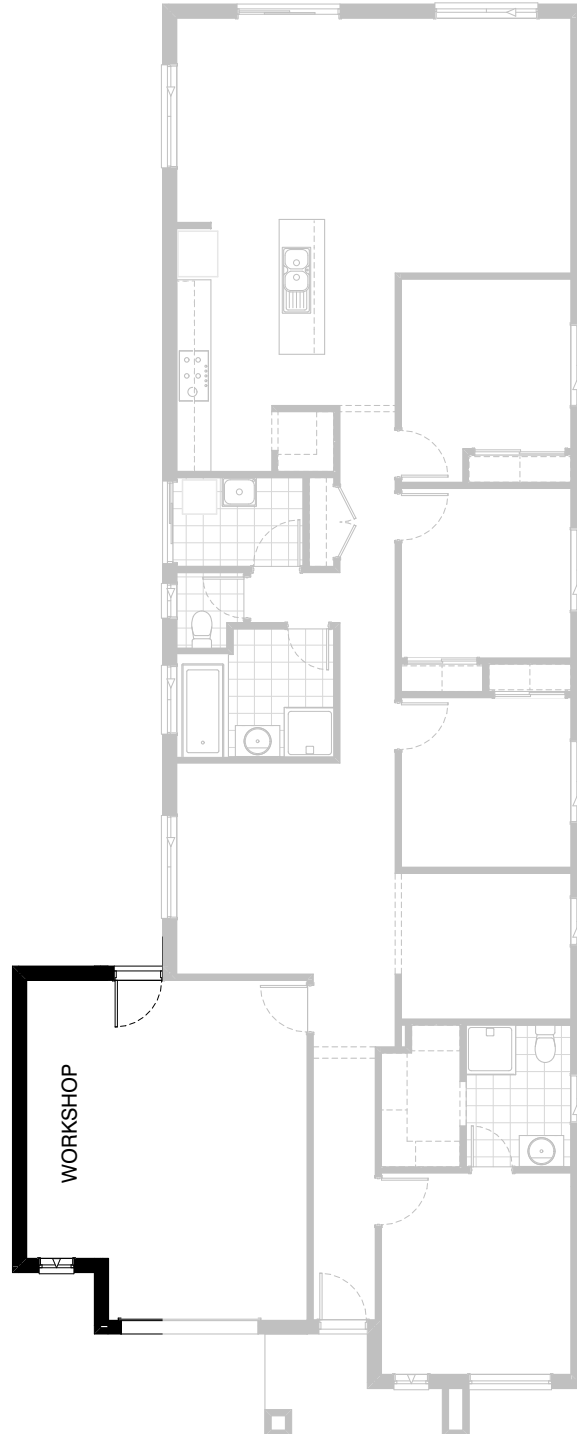
Option G-1

Provide extension to Garage to create additional storage area.

Increases area by 4.53m².
Increases width by 840mm.

FLOORPLAN OPTIONS

 **4**  **2**  **1**






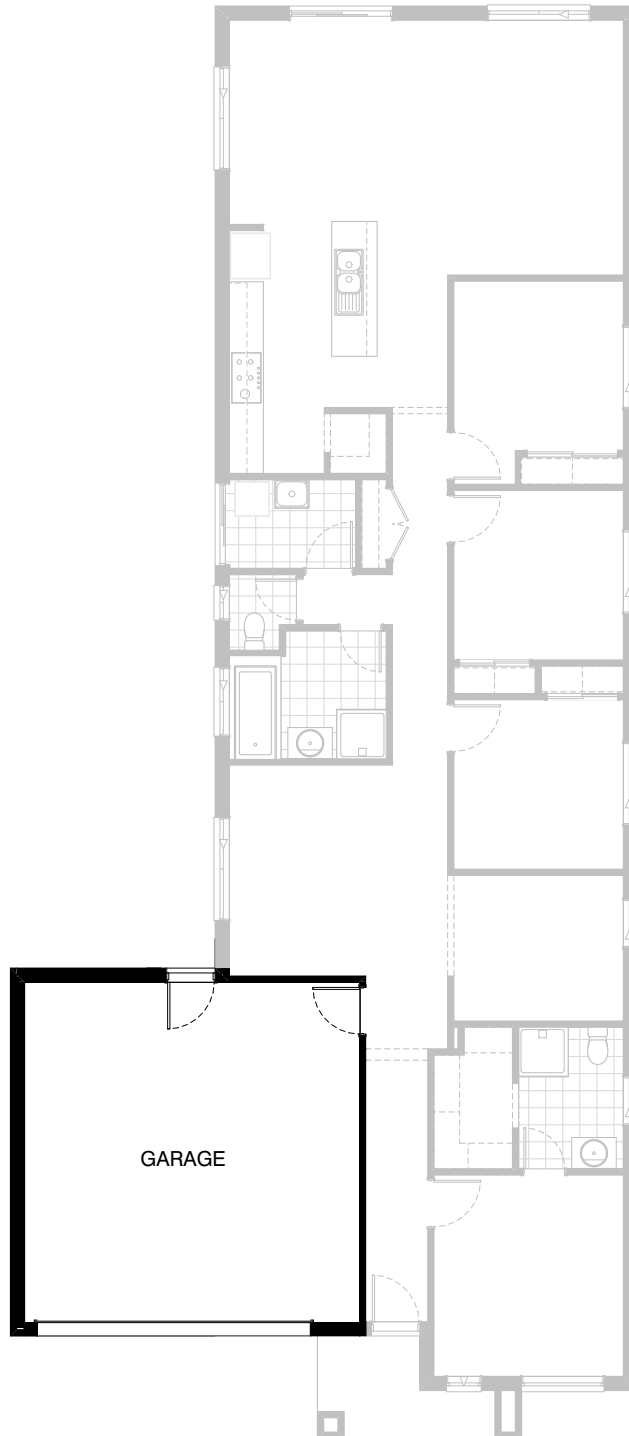
Option G-2

Provide extension to Garage to create Workshop area including additional 610mm x 2057mm aluminium awnding window.

Increases area by 7.76m².
Increases width by 1440mm.

FLOORPLAN OPTIONS

 **4**  **2**  **1**



Option G-3

Provide double car Garage including larger Garage door to suit.

Increases area by 15.53m².
Increases width by 2400mm.