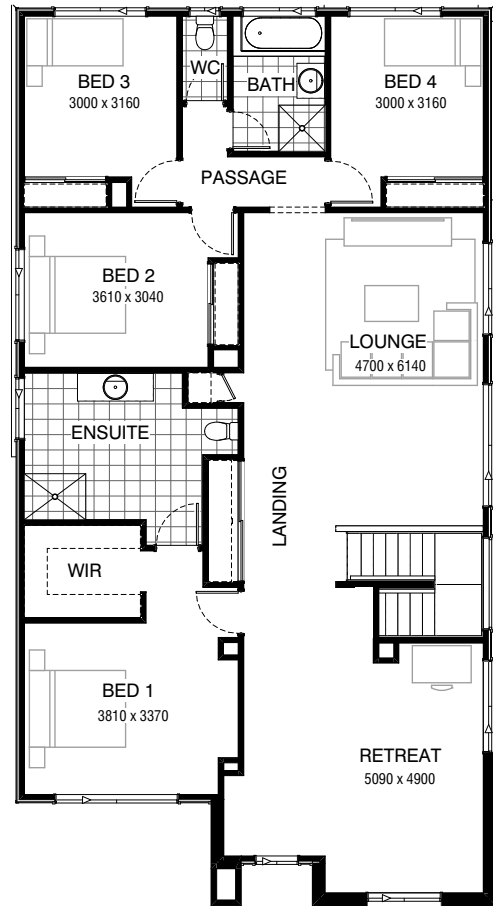


GROUND FLOOR



FIRST FLOOR

**FLOORPLAN OPTIONS**

We personalise our floorplans. Talk to us about our huge range of ready-to-go design options.

**Facades available:**

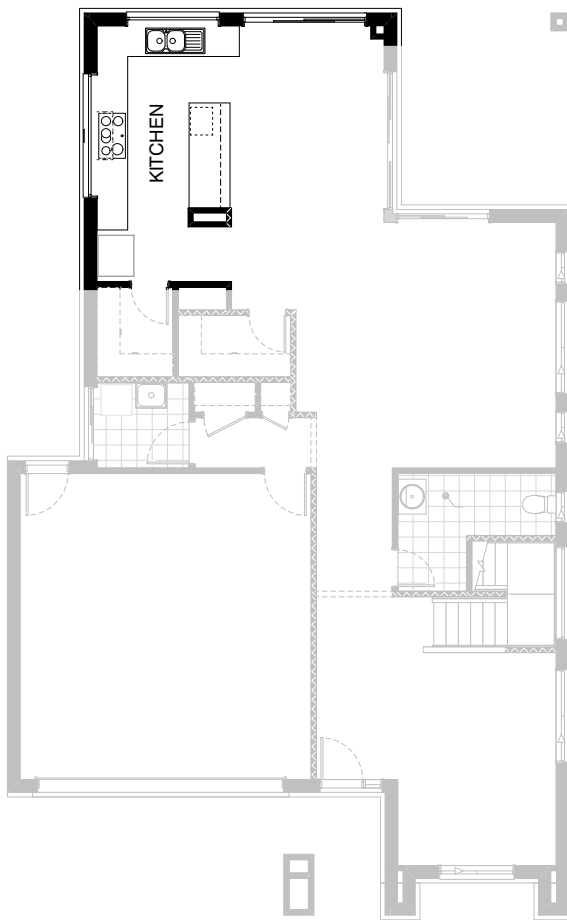
Kingston, Metro, Nouveau	
Traditional, Urban	
<b>Overall home width</b>	<b>10.97m</b>
<b>Overall home length</b>	<b>17.63m</b>

Residence	266.1m <sup>2</sup>	28.7sq
Garage	37.4m <sup>2</sup>	4.0sq
Porch	4.7m <sup>2</sup>	0.5sq
Alfresco	12.9m <sup>2</sup>	1.4sq
<b>Total</b>	<b>321.2m<sup>2</sup></b>	<b>34.6sq</b>

Listed details based on Traditional facade floorplan (illustrated)

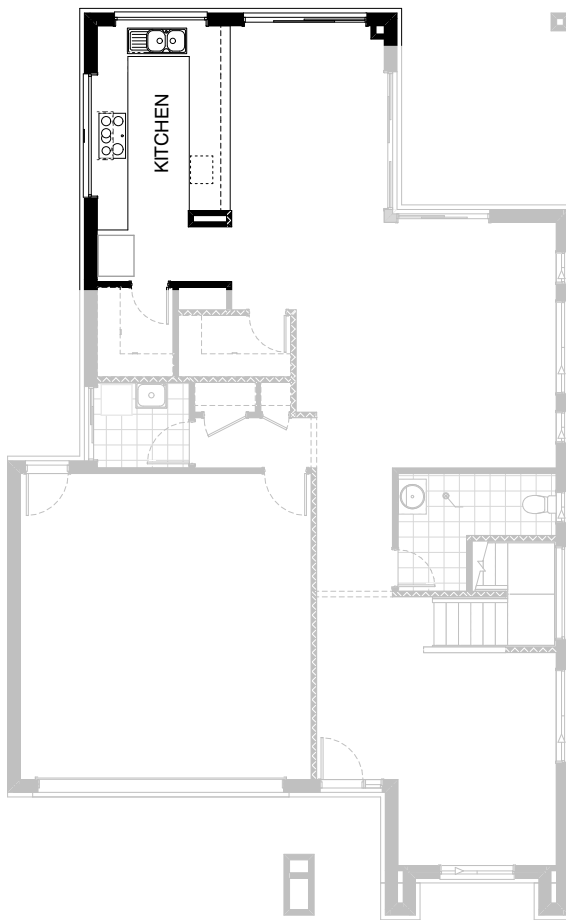
\*Copyright conditions. All photos and illustrations are representative only. Floor plans and specifications may be varied by Burbank without notice, the dimensions are diagrammatic only and a Building Contract with final drawings will display correct dimensions and detail. All designs are the property of Burbank and must not be used, reproduced, copied or varied, wholly or in part without written permission from an authorised Burbank representative. Copyright Burbank Australia (QLD) Pty Ltd. ABN 77 103 014 615. QBCC 1046544.

**Call 13 BURBANK**  
**Visit [burbank.com.au](http://burbank.com.au)**



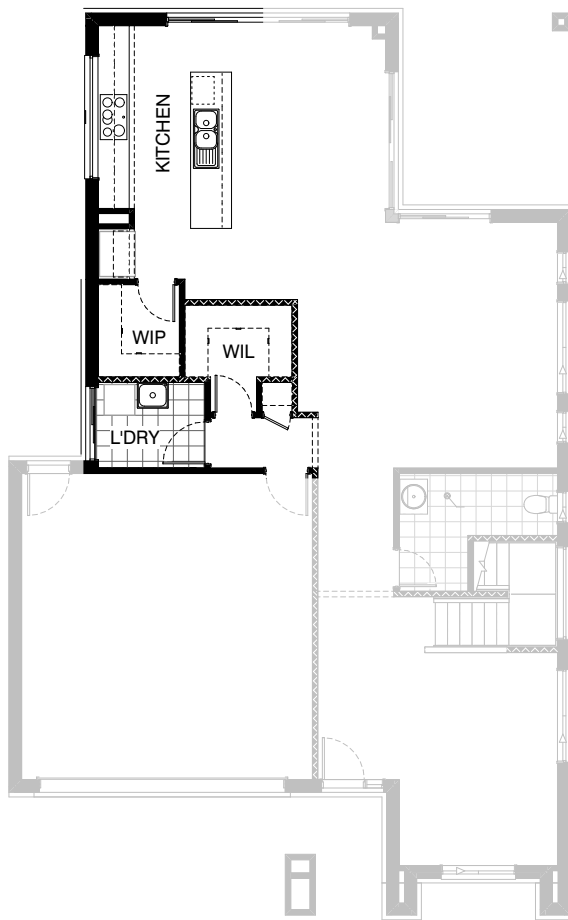
### Option Kitchen01

Provide 'L' shaped Kitchen Option with additional  
 1no. 450mm base cupboard,  
 3no. 900mm base cupboards,  
 1no. 800mm base cupboards,  
 1no. 900x900 corner base cupboard,  
 1no. 900mm under bench oven with  
 900mm hotplate and retractable range hood over,  
 1no. laminated DW provision,  
 1no. 300mm base cupboard,  
 1no. laminated MW provision with pot drawer below,  
 1no. 450mm drawers, 1no 514x1810 fixed window.  
 Relocate existing 514mm x 2410mm fixed window to Kitchen by  
 120mm to suit and provide additional 1no. 2110mm x 2410mm  
 aluminium sliding door to Meals in lieu of standard 2110mm x  
 3575mm aluminium bi-parting sliding door with additional tiled  
 splash back and bench top to suit.



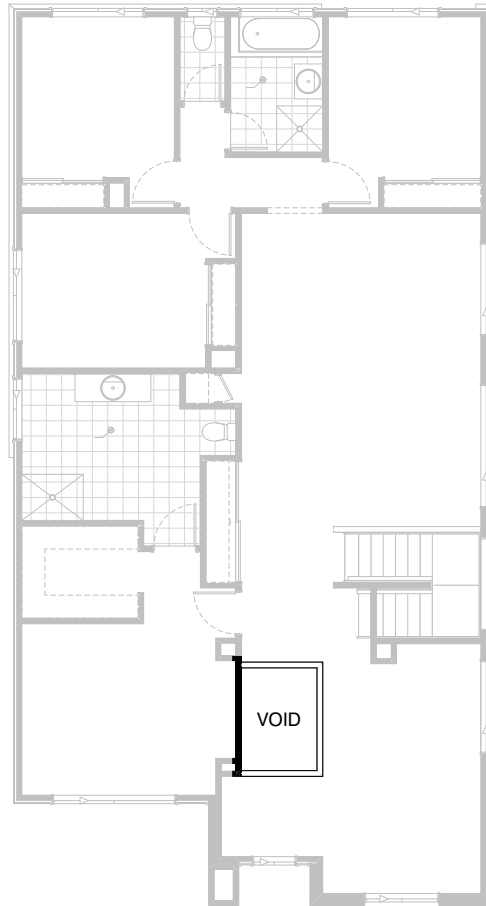
### Option Kitchen02

Provide 'U' shaped Kitchen with additional  
 1no. 514x1810 aluminium fixed window,  
 1no. 450mm drawers,  
 1no. laminated MW provision with pot drawer below,  
 1no. laminated DW provision,  
 1no. 800mm blind base carcass with 1no. 350mm door,  
 3no. 900mm base cupboards,  
 1no. 900mm x 900mm corner base carcass,  
 1no. 800mm base cupboard,  
 1no. 450mm base cupboard,  
 1no. 900mm retractable rangehood with  
 1no. 900mm hotplate and 1no. 900mm underbench oven below  
 with additional tiled splashback and benchtop to suit.



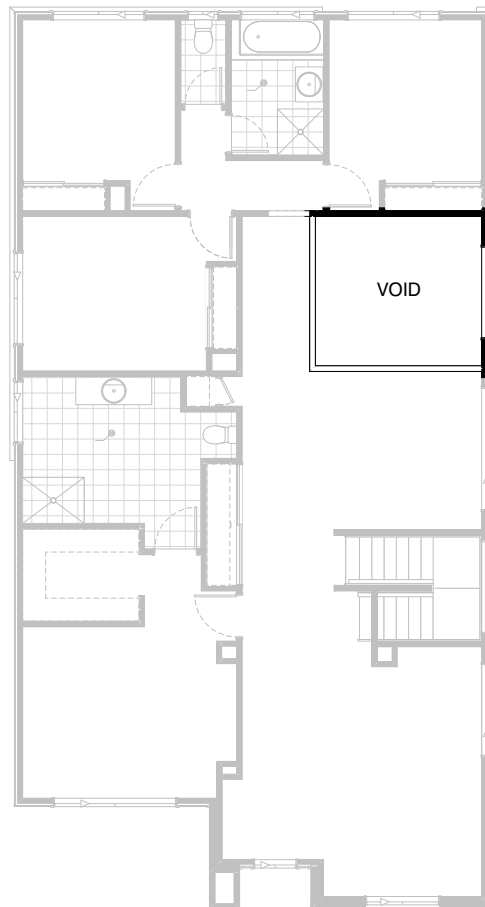
### Option Kitchen03

Provide Kitchen Option with island bench including  
 1no. 900mm base cupboard,  
 2no. 700mm base cupboards,  
 2no. 600mm base cupboards,  
 1no. 350mm base cupboard,  
 2no. 700mm overhead cupboards,  
 2no. 600mm overhead cupboards,  
 1no. 900mm under bench oven with 900mm hotplate and  
 900mm retractable range hood over,  
 1no. laminated DW provision,  
 1no. laminated MW provision with pot drawer below,  
 1no. 450mm drawers,  
 1no 514x2410 fixed window.  
 Relocate existing plumbing stack void to exterior wall and provide  
 plaster bulkhead above window and ref. space. Remove existing  
 Linen cupboard and rearrange layout to WIP, WIL  
 and Laundry as shown also.



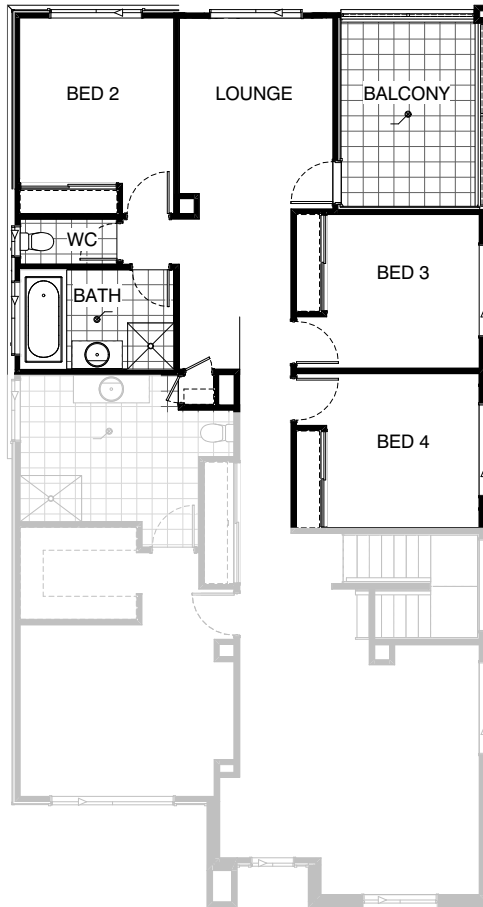
### Option Internal01

Provide Void area above Entry including 1020(h) plaster wall balustrade to Retreat.



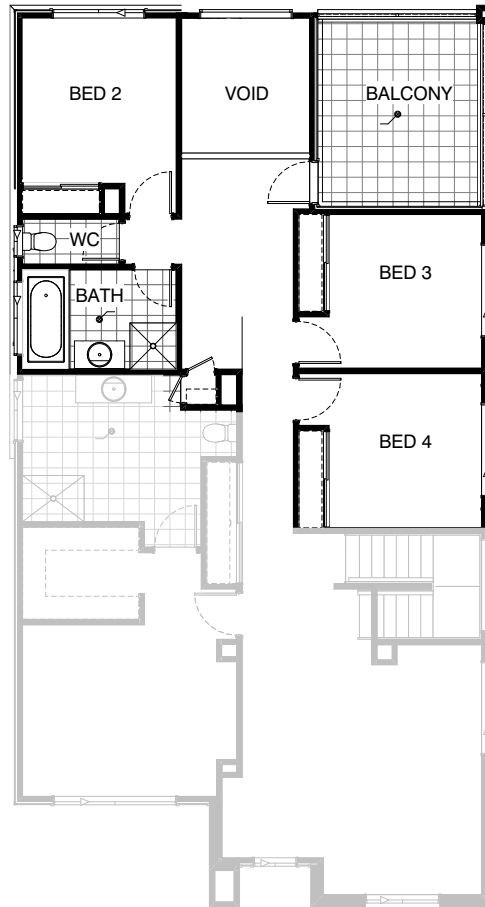
### Option Internal02

Provide Void area above Family including 1020(h) plaster wall balustrade to Lounge, 1no. 2057mm x 1810mm aluminium fixed window to Void in lieu of standard 1no. 1200mm x 1810mm aluminium sliding window.



### Option Internal03

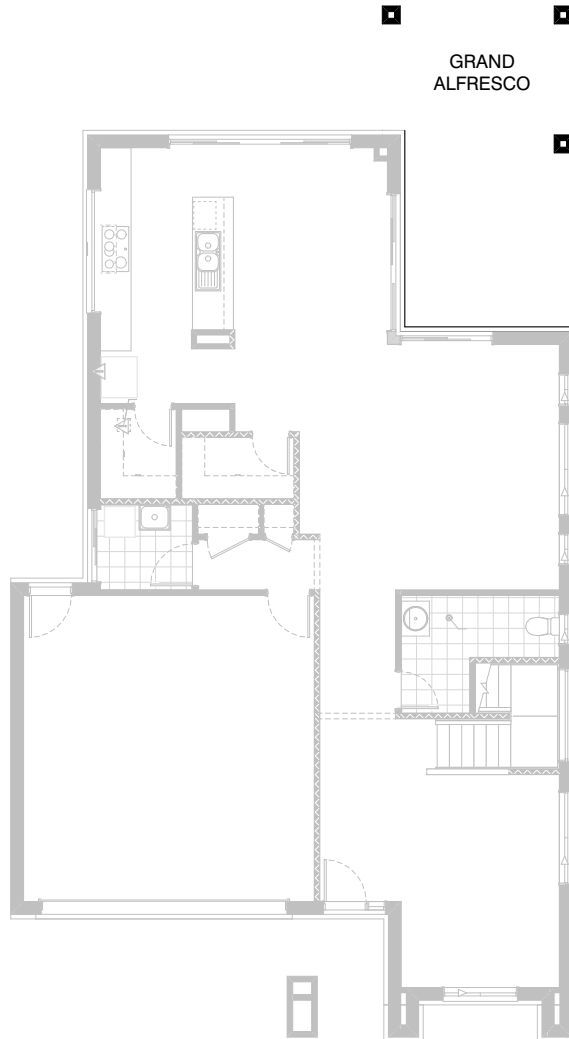
Provide alternative layout to accommodate rear balcony Option and provide ASW 1218 to Lounge in lieu of ASW 2115.



### Option Internal04

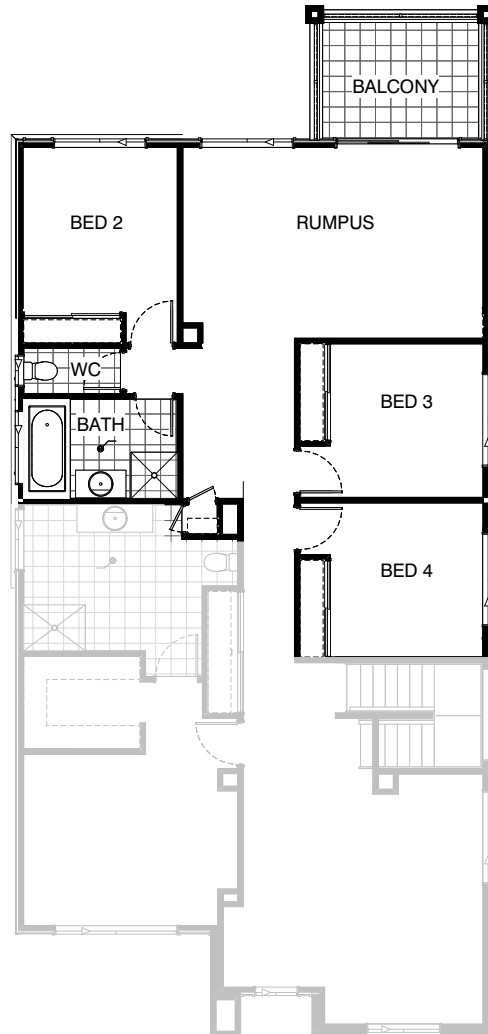
Provide alternative layout to accommodate rear balcony and Void option. Provide AFW 2018 to void in lieu of ASW 2115.





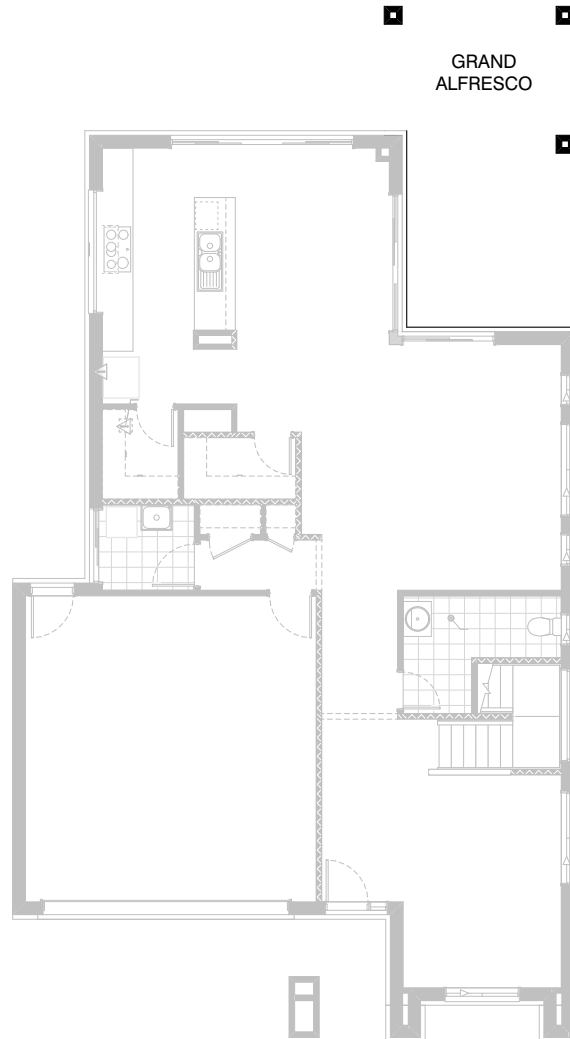
### Option Internal05

Provide alternative layout to accommodate rear balcony and Grand Alfresco option. Provide ASW 1218 to Rumpus in lieu of ASW 2115.



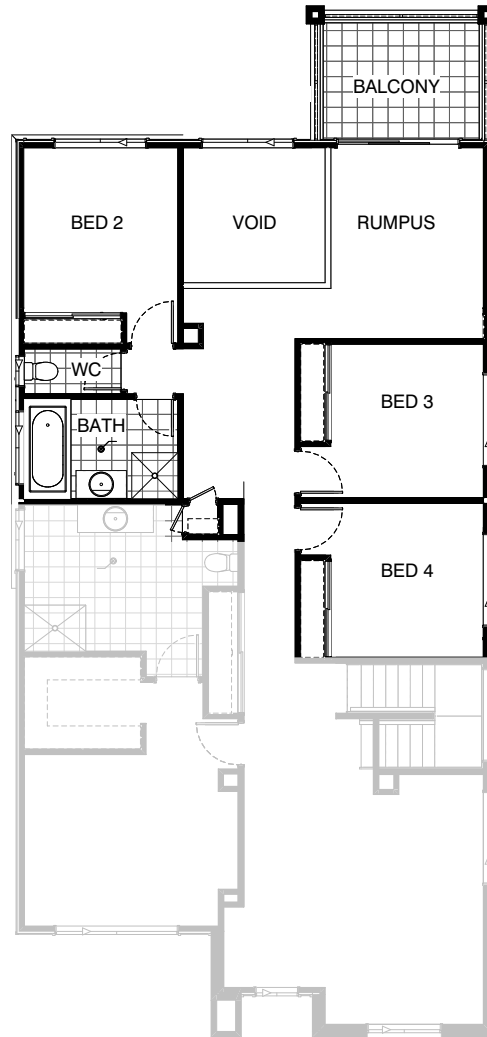
### Option Internal05

Provide alternative layout to accommodate rear balcony and Grand Alfresco option. Provide ASW 1218 to Rumpus in lieu of ASW 2115.



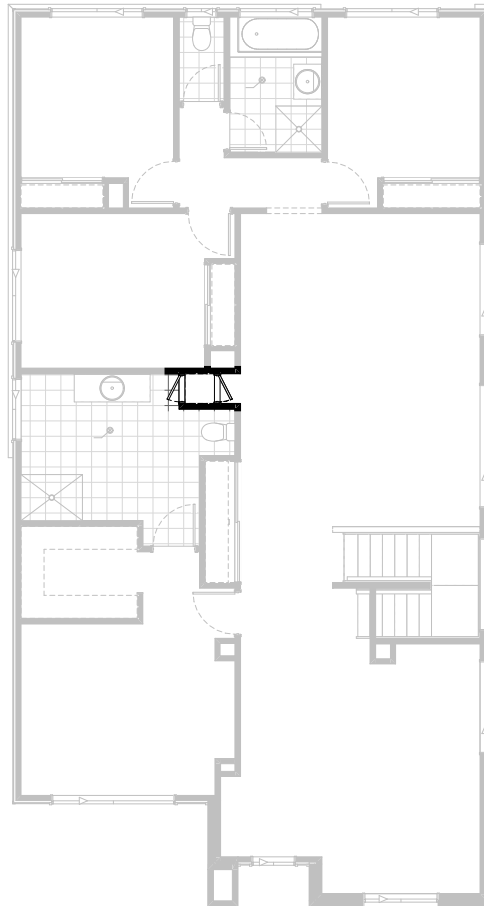
### Option Internal06

Provide alternative layout to accommodate rear balcony, void and Grand Alfresco option. Provide AFW 2018 to void in lieu of ASW 2115.



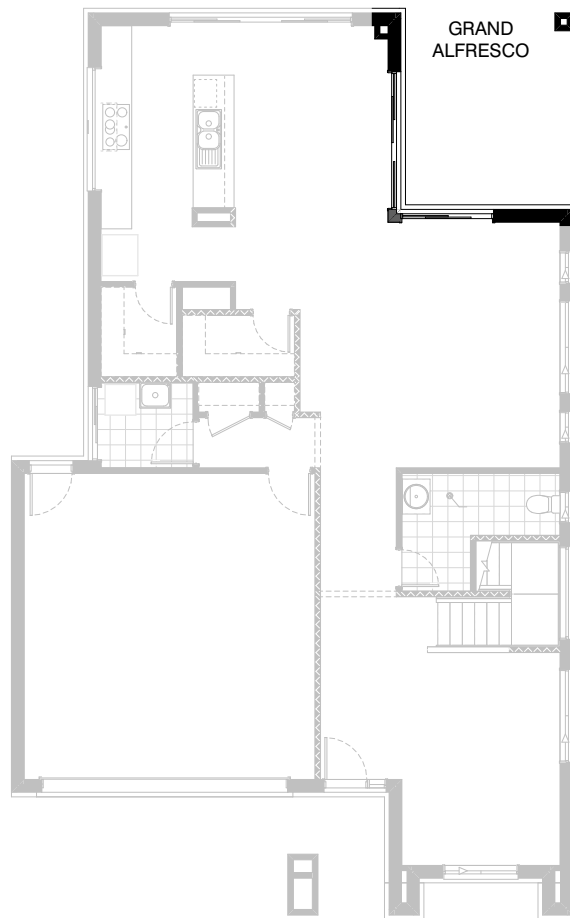
### Option Internal06

Provide alternative layout to accommodate rear balcony, void and Grand Alfresco option. Provide AFW 2018 to void in lieu of ASW 2115.



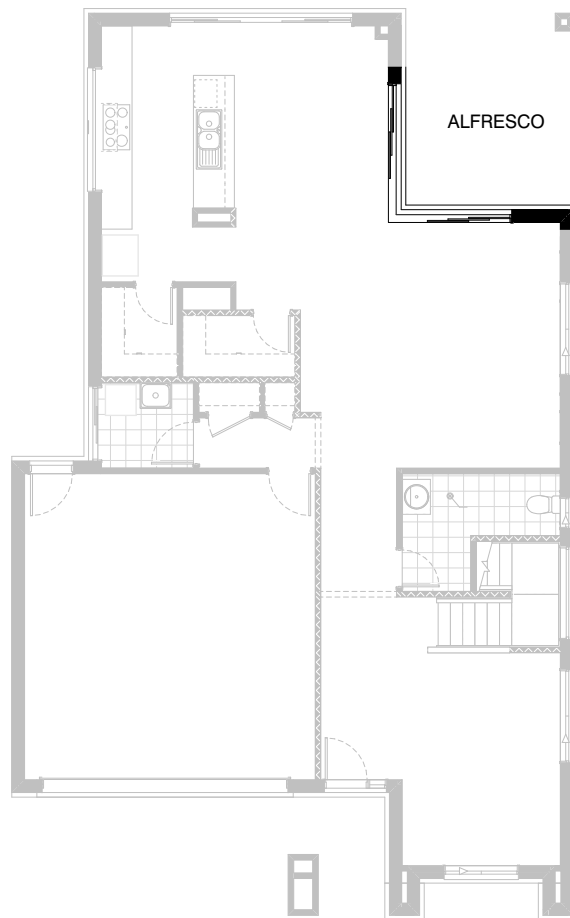
### Option Internal07

Provide Laundry Chute in lieu of respective Linen Cupboards.



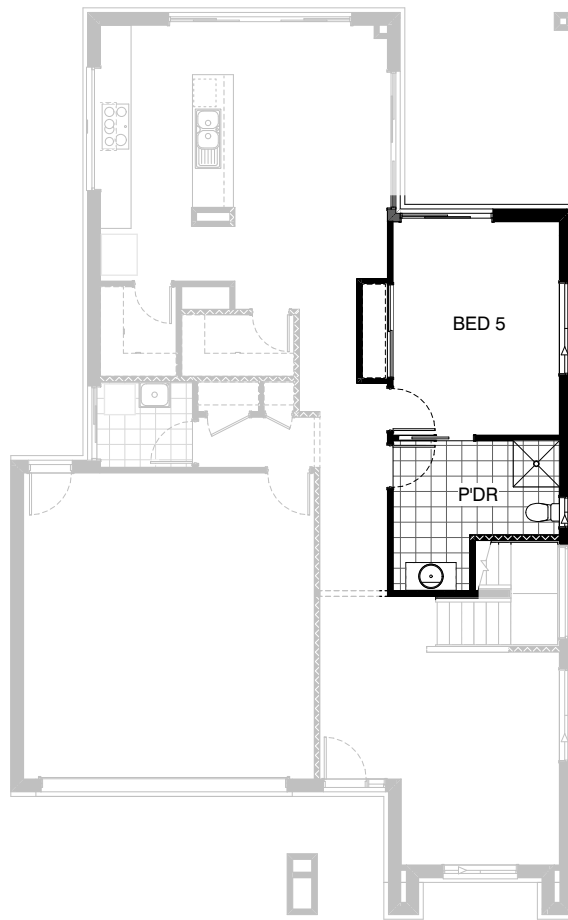
### Option Internal08

Provide alternative layout to accommodate Grand Alfresco Option.



### Option Internal09

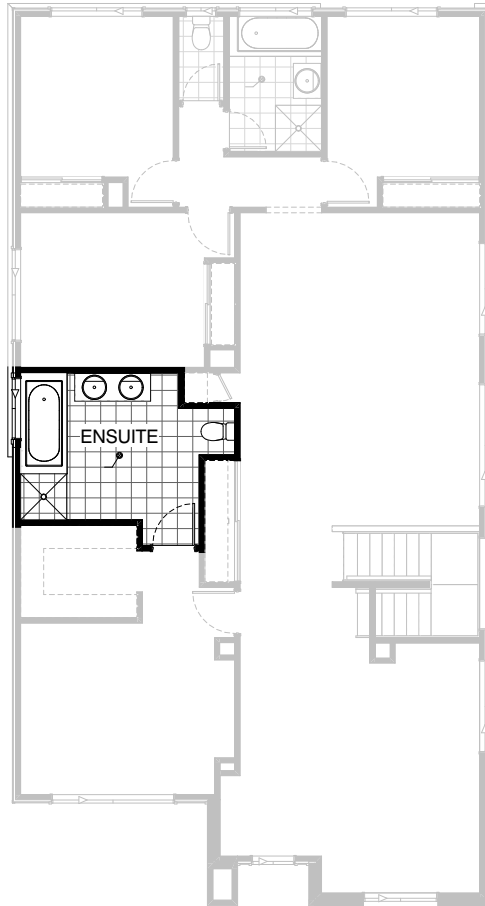
Provide corner sliding door to Alfresco



### Option Internal10

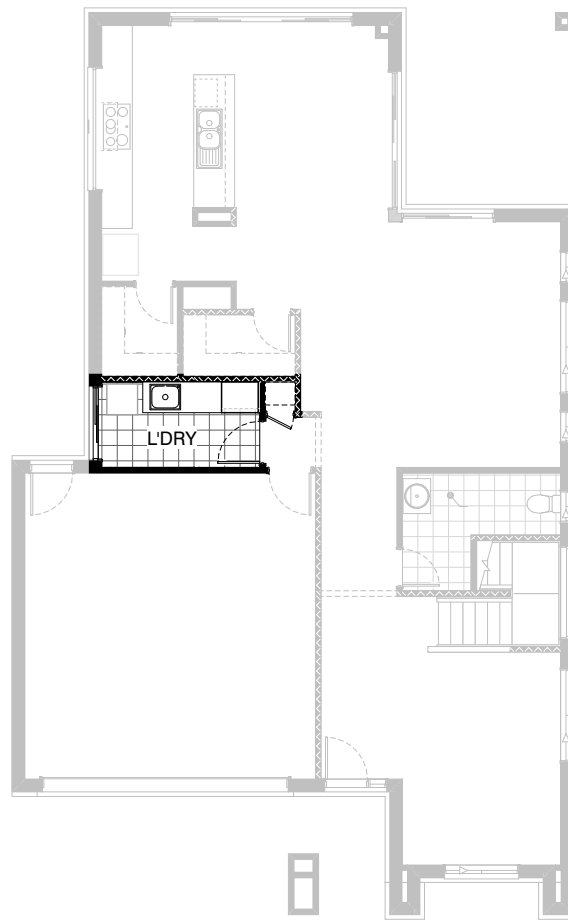
Provide floor plan option with 5th Bedroom downstairs as shown.  
Upgrade Powder room by including 900x900mm tiled shower base and 982mm vanity with single basin.  
Plaster and stud wall added to Bed 5 including built-in Robe with 450mm shelf and hanging rail, and cavity sliding door access to Bath.  
Also remove 2No. ASW 1206 windows new Bed 5 and move ASW 1218 window as shown.





### Option Ensuite01

Provide Ensuite Option with additional double basin to vanity unit,  
1no. 1675mm bath with tiled hob and 1no. 900mm x 900mm tiled shower base  
in lieu of standard 1200mmx 900 tiled shower base to suit  
and 1no. 1200mm x 1200mm aluminium sliding window in lieu of standard.



### Option Laundry01

Provide Laundry Option by deleting site built plaster lined Linen cupboard with 1no. 820mm hinged door and extend Laundry width by relocating Laundry flush panel hinged door and provide additional 1no. 700mm laminated Linen cupboard with 2no. 350mm doors, 1no. 700mm base cupboard and 1no. 800mm base cupboard with additional tiled splash back and bench top to suit.