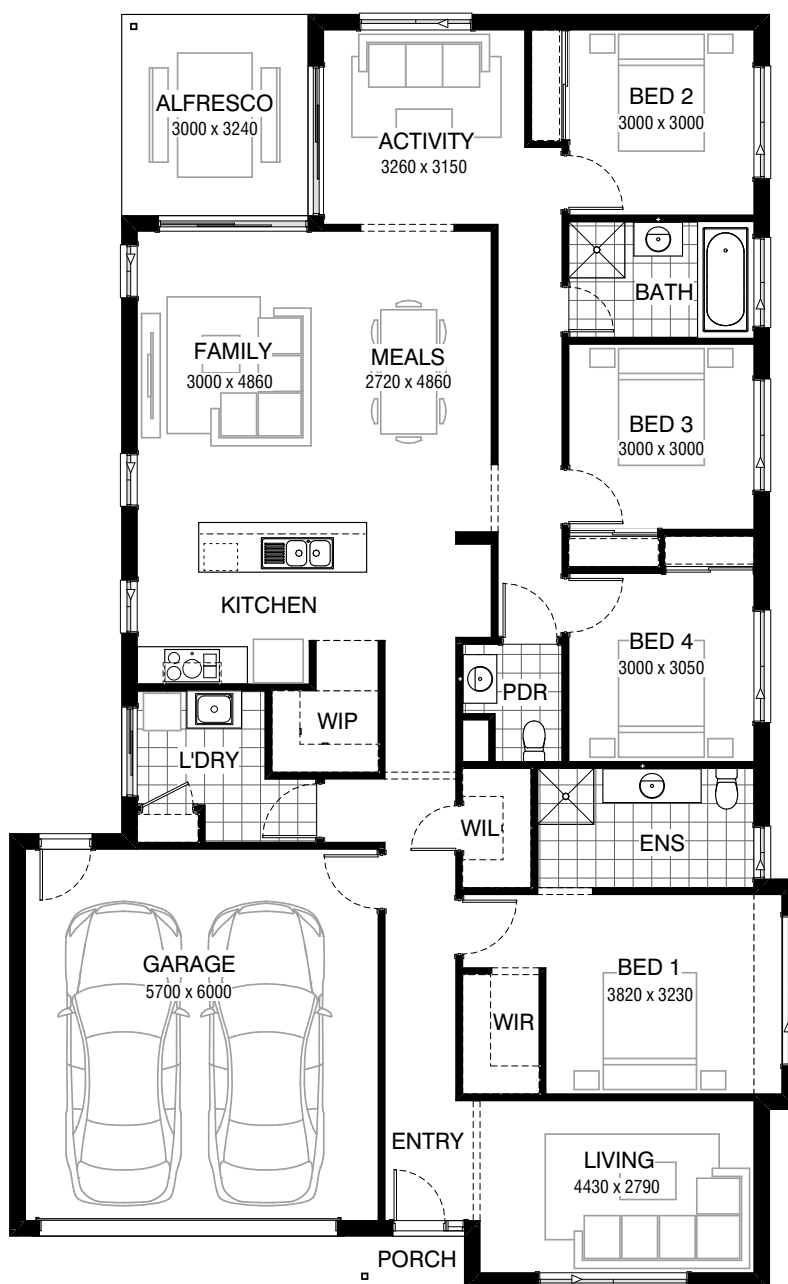



**4**

**2**

**3**

**2**


#### FLOORPLAN OPTIONS

We personalise our floorplans. Talk to us about our huge range of ready-to-go design options.

#### Facades available:

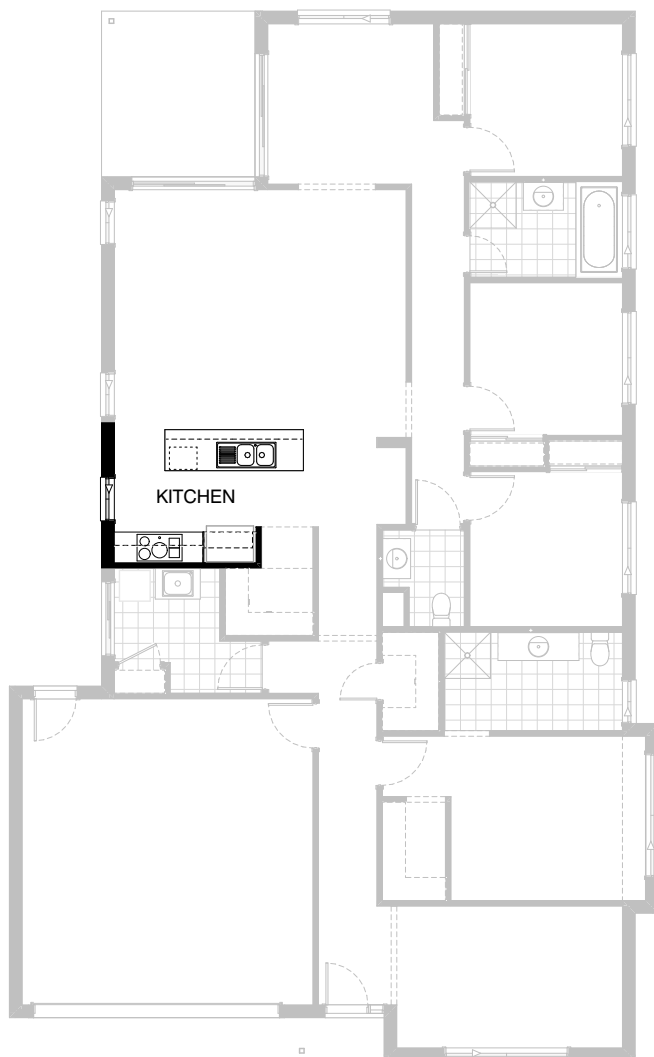
Coastal, Selta, Kingston, Nouveau, Scarborough, Traditional, York

**Overall home width 12.23m**

**Overall home length 20.51m**

Residence	212.9m <sup>2</sup>	22.9sq
Garage	37.5m <sup>2</sup>	4.0sq
Porch	1.5m <sup>2</sup>	0.2sq
Alfresco	9.7m <sup>2</sup>	1.0sq
<b>Total</b>	<b>224.1m<sup>2</sup></b>	<b>24.1sq</b>

Listed details based on Traditional facade floorplan (illustrated)



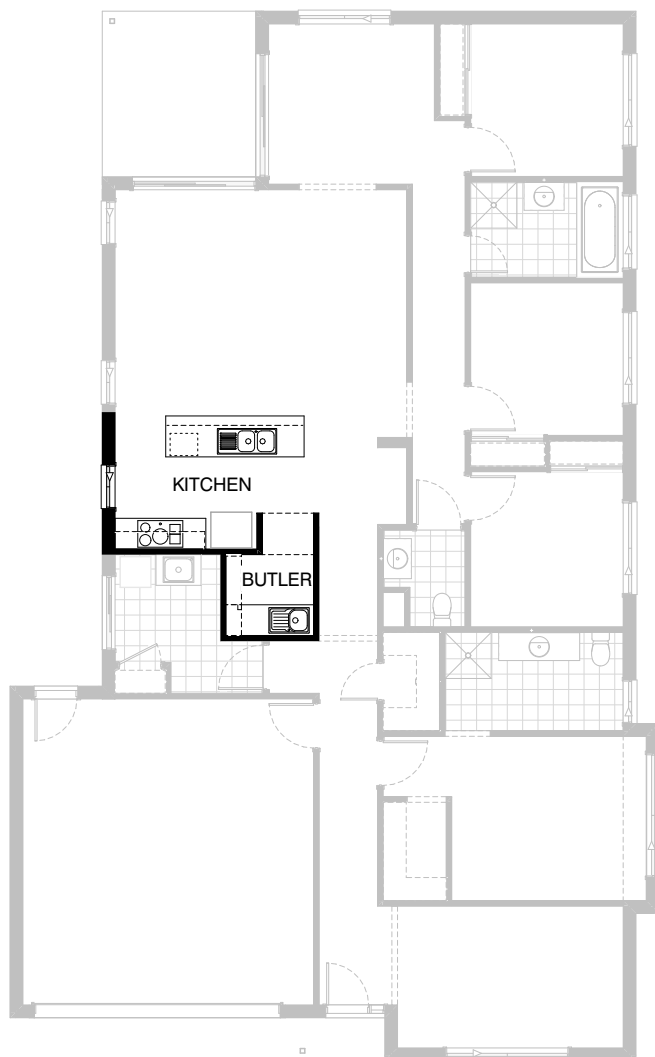
### Option Kitchen01

Provide Kitchen option including:  
 1No. dishwasher provision, double bowl sink,  
 1No. 450mm drawer unit,  
 1No. microwave provision,  
 1No. 900mm base cupboard,  
 2No. 400mm base cupboards,  
 2No. 400mm overhead cupboards,  
 1No. 900mm retractable rangehood,  
 1No. 900mm under bench oven,  
 1No. open shelf above Ref. space,  
 additional benchtop and tiled splashback to suit.


**4**

**2**

**3**

**2**


## Option Kitchen02

Provide Kitchen upgrade option, including:

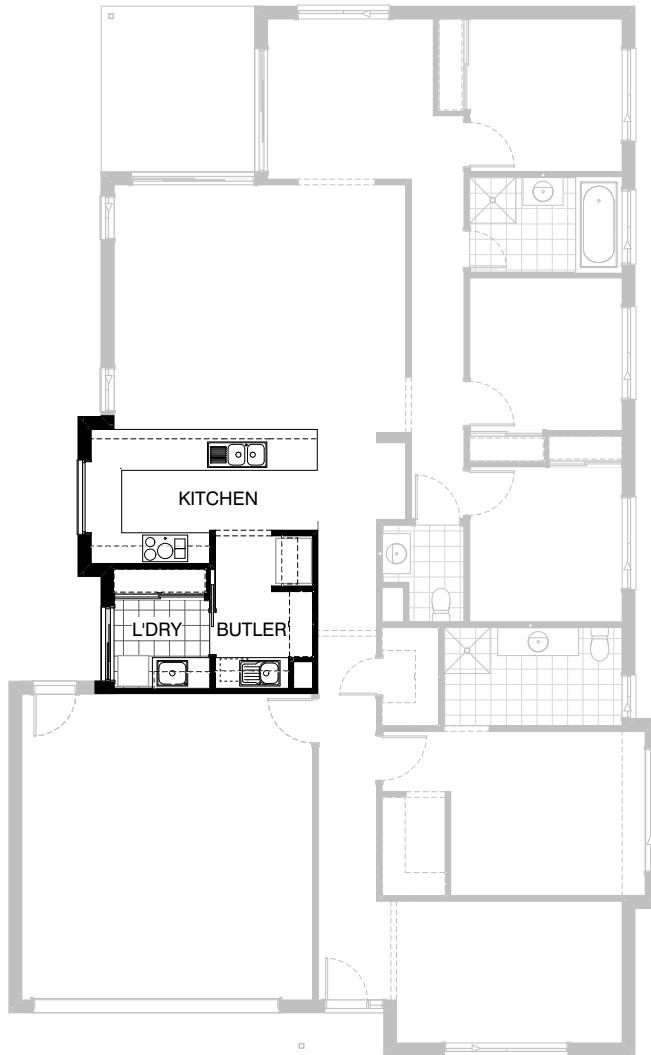
- 2No. 400mm base cupboards,
- 2No. 400mm overhead cupboards,
- 1No. 900mm retractable rangehood,
- 1No. 900mm under bench oven,
- Butler's Pantry in lieu of standard Walk-in Pantry including,
- 1No. 900mm base cupboard,
- 1No. 450mm base cupboard,
- 1No single bowl sink,
- 1800mm(h) x 300mm(w) Adj. shelving,
- additional benchtop and tiled splashback to suit.

Family area to be decreased by 270mm,  
 Laundry and WIP increased by 270mm.


**4**

**2**

**3**

**2**


### Option Kitchen03

Provide U-Shape Kitchen upgrade including  
 3No. 900mm base cupboards,  
 1No. 450mm drawer unit,  
 1No. dishwasher provision  
 2No. 600mm blind base cupboards,  
 1No. 900mm underbench oven,  
 with cooktop & retractable rangehood,  
 2No. 400mm base cupboards,  
 1No. 400mm overhead cupboard,  
 1No. 900mm overhead cupboard,  
 1No. double bowl sink.  
 additional benchtop and tiled  
 splashback to suit.  
 Provide 1No. 1200mm x 1450mm aluminium  
 fixed window in lieu of standard.

Butler's:  
 1No. 700mm base cupboard,  
 1No. microwave provision,  
 1No. 900mm overhead cupboard,  
 1No. 450mm overhead cupboard.  
 4No. 450mm shelves,  
 1No. open shelf above Ref. space.

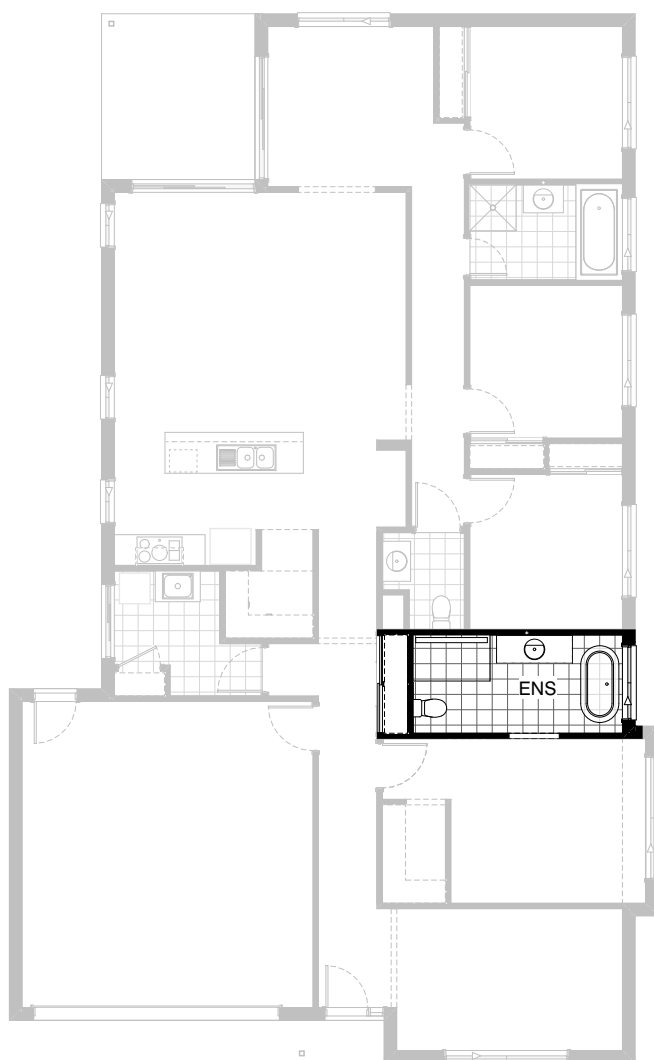
Laundry:  
 1No. 700mm base cupboard,  
 1No. 350mm base cupboard,  
 1No. 1000mm overhead L'dry open shelf cupboard

Note:  
 Provide additional 80mm to Family area.


**4**

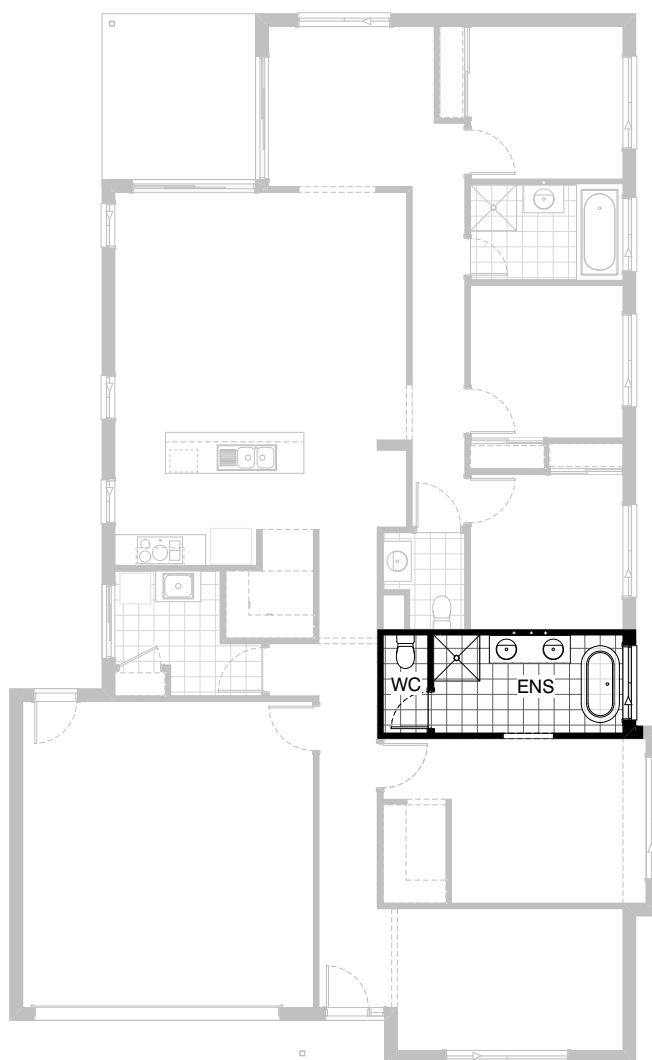
**2**

**3**

**2**


## Option Ensuite01

Provide Ensuite upgrade option with 1500mm x 900mm tiled shower base in lieu of standard. 1No. 1482mm vanity in lieu of standard, 1500mm freestanding Bath, remove WIL and provide Linen cupboard. Walls to be adjusted to suite. Provide 1200mm x 1450mm aluminium sliding window in lieu of standard.



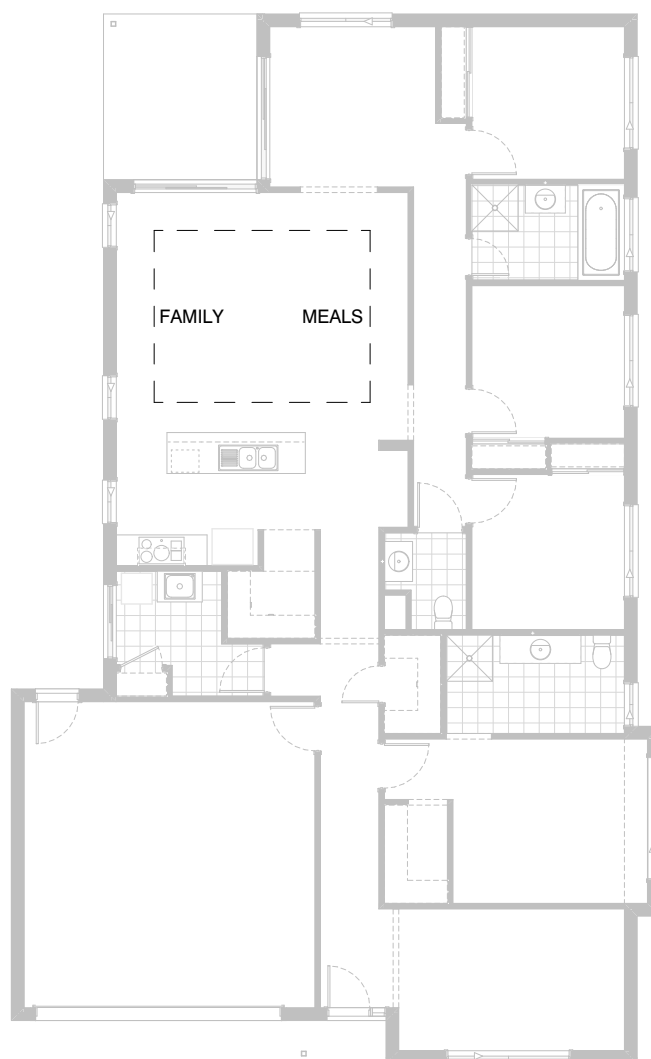
## Option Ensuite02

Provide Ensuite upgrade option including rearranged layout with 900mm x 900mm tiled shower base, 1582mm vanity with additional basin, 1500mm freestanding Bath and enclosed WC with 720mm hinged door. Provide 1200mm x 1450mm aluminium sliding window in lieu of standard.



## Option Internal01

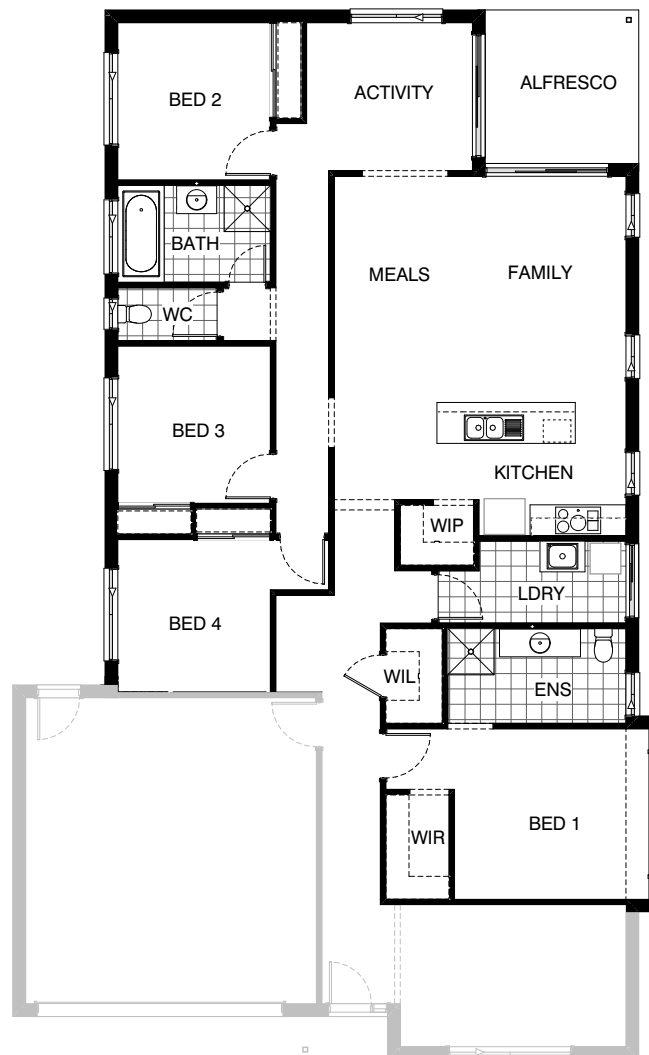
Provide Activity room in lieu of Bedroom 3.  
Bed 4 walls and Robe to be adjusted to suit.



## Option Internal02

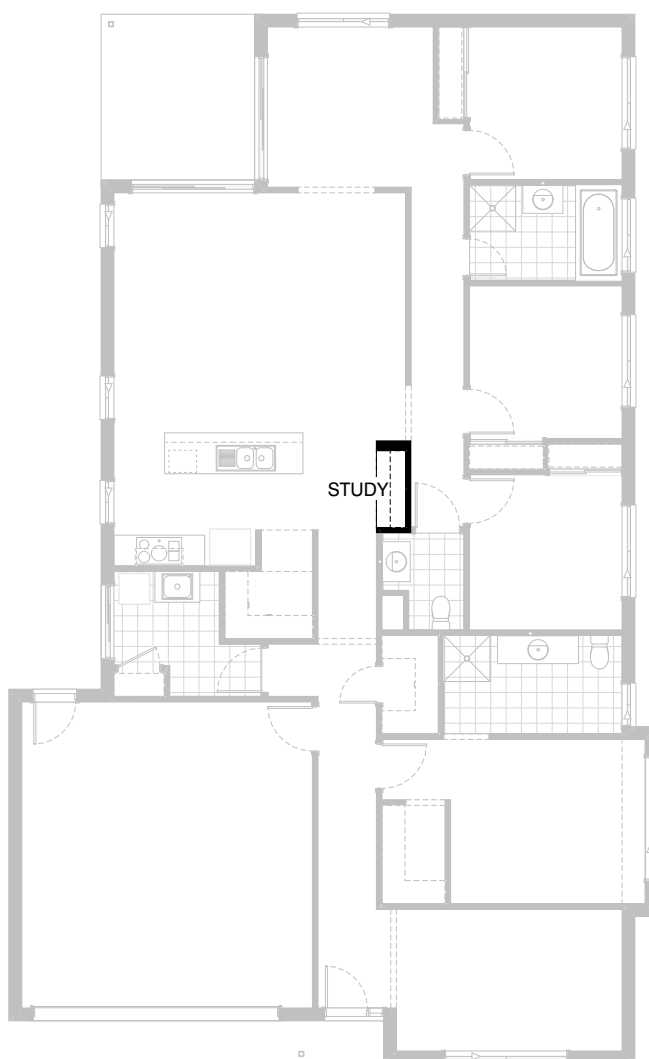
Provide 300mm high ceiling to Family and Meals area.





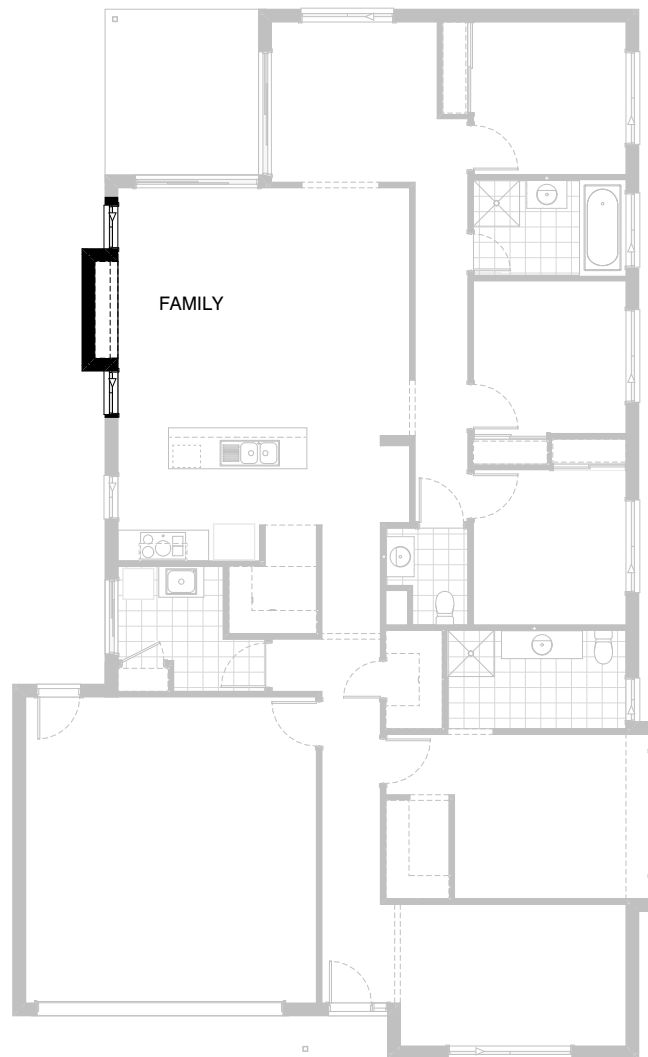
### Option Internal03

Provide floor plan option with  
 mirrored rear section of the home.



### Option Internal04

Provide built-in joinery upgrade  
 option to Study including:  
 1No. 570mm deep laminated desk,  
 1No. 450mm drawer unit,  
 2No. 300mm deep 60mm thick  
 open shelves over desk,  
 300mm deep bulkhead.



### Option Internal05

Provide built-in joinery upgrade option to Family including:  
2No. 900mm TV unit cupboards,  
1No. 300mm deep 60mm thick open shelves,  
External projection by 450mm deep x 2390mm length,  
300mm deep bulkhead.  
Increases area by 1.08m<sup>2</sup>.



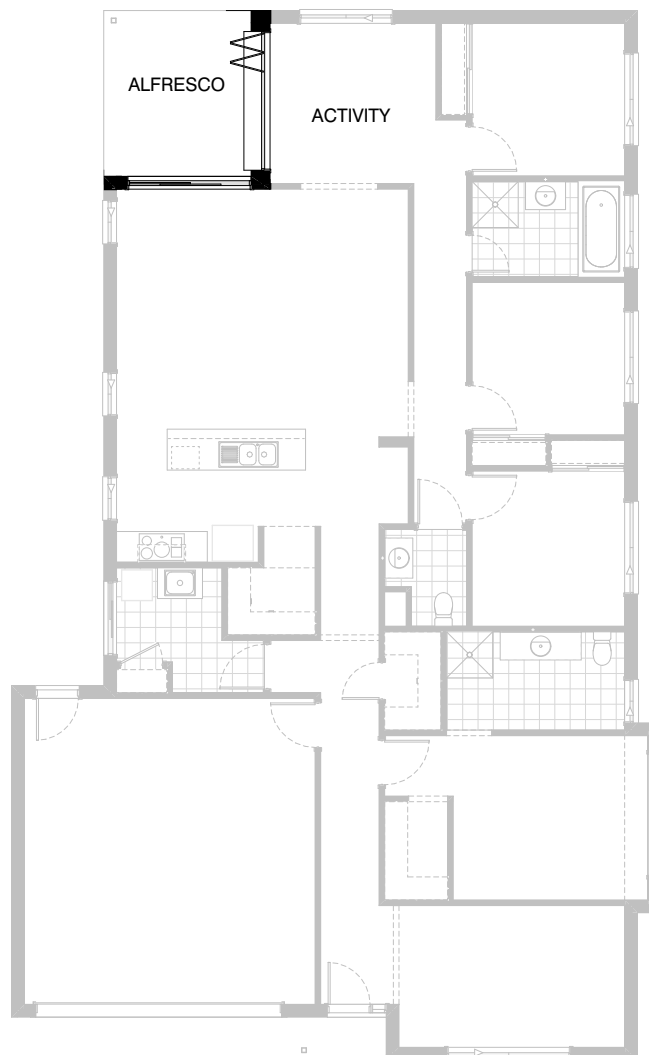
### Option External01

Provide 2110mm - 2410mm x 2710mm  
 aluminium corner stacker sliding door in lieu of  
 2No. standard sliding doors.  
 Bulkhead to be removed.


**4**

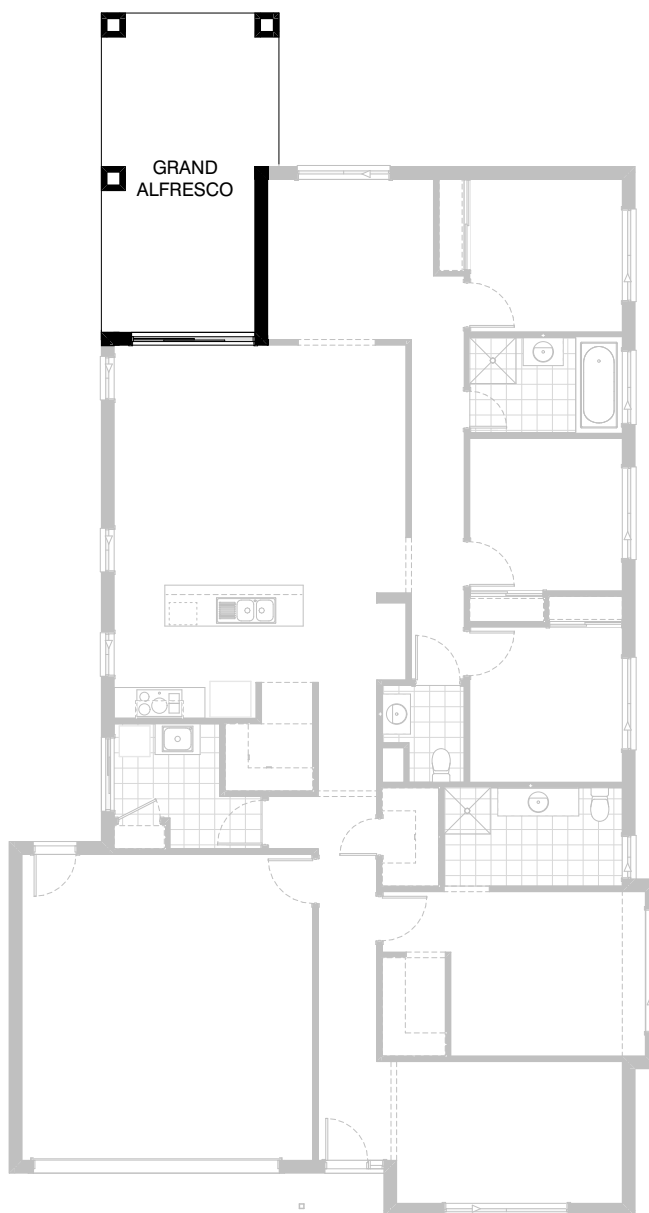
**2**

**3**

**2**


## Option External02

Provide 1No. 1200mm x 2710mm aluminium bi-fold window  
 in lieu of standard to Activity / Alfresco.  
 Double brick to external wall to increase bi-fold's sill area.



### Option External03

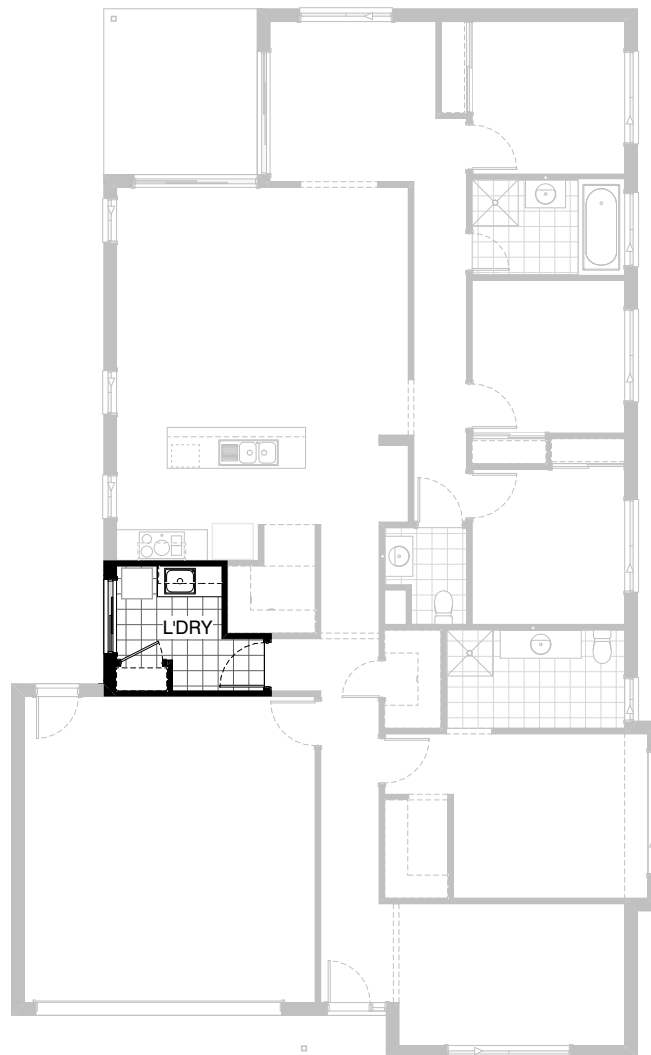
Provide Grand Alfresco option including:  
 tiled roof over and additional  
 3No. 470mm x 470mm brick piers.  
 Adds 3000mm of length to the building footprint.  
 Increases area by 10.41m<sup>2</sup>.

Note:  
 Minimum 30m. Lot length required.


**4**

**2**

**3**

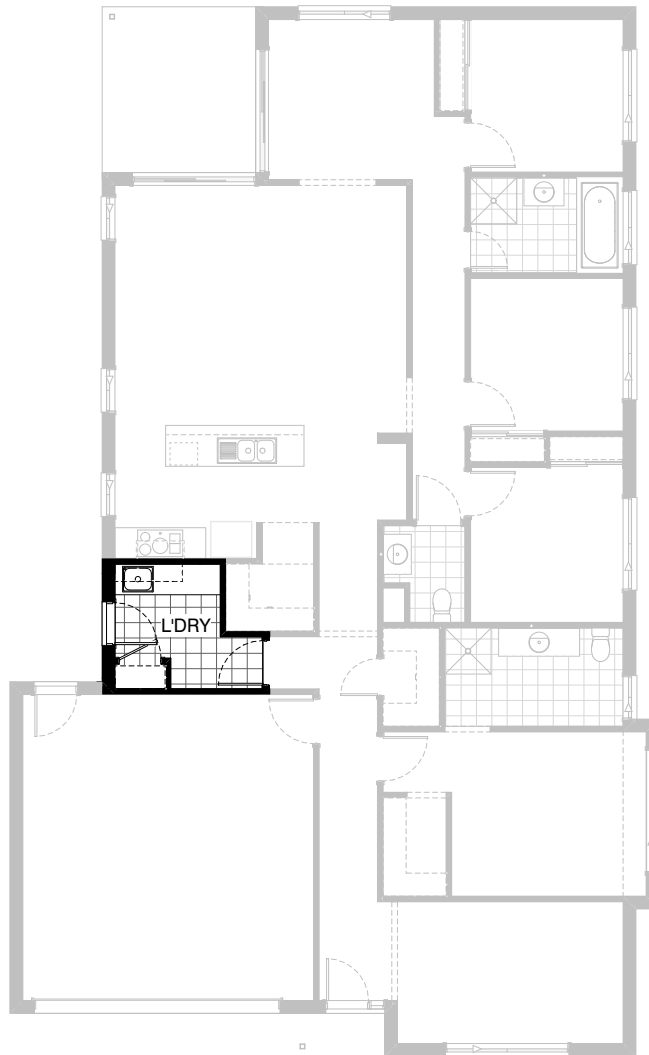
**2**


## Option Laundry01

Provide Laundry upgrade including laminated base and overhead cupboards and stainless steel inset trough including:

- 1No. 800mm base cupboard,
- 1No. 400mm base cupboard,
- 1No. 800mm overhead cupboard,
- 1No. 400mm overhead cupboard,

additional benchtop and tiled splashback to suit.



## Option Laundry02

Provide Laundry upgrade including laminated base and overhead cupboards and stainless steel inset trough including:

- 1No. 800mm base cupboard,
- 1No. 450mm base cupboard,
- 1No. 800mm overhead cupboard,
- 1No. 450mm overhead cupboard,
- additional benchtop and tiled splashback to suit.

Option also provides open space under bench for washer.

- 1No. 820mm external hinged door in lieu of standard.