

Facades available:

Callington, Harrogate, Kent

Lancaster, Sheffield, Swansea

Wiltshire, Eastwood

Overall home width 7.07m

Overall home length 26.04m

Residence 135.7m² 14.6sq

Garage 21.3m² 2.3sq

Porch 0.9m² 0.1sq

Total 158.0m² 17.0sq

Listed details based on Sheffield facade floorplan (illustrated)

FLOORPLAN OPTIONS

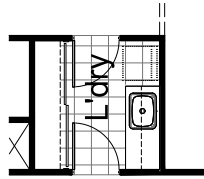
We personalise our floorplans.

Talk to us about our huge range of ready-to-go design options or simply visit www.burbank.com.au/south-australia for more details.

*Copyright conditions. All photos and illustrations are representative only. Floor plans and specifications may be varied by Burbank without notice, the dimensions are diagrammatic only and a Building Contract with final drawings will display correct dimensions and detail. All designs are the property of Burbank and must not be used, reproduced, copied or varied, wholly or in part without written permission from an authorised Burbank representative. Copyright Burbank Australia (SA) Pty Ltd. ABN 96 165 533 406. BLD 266709.

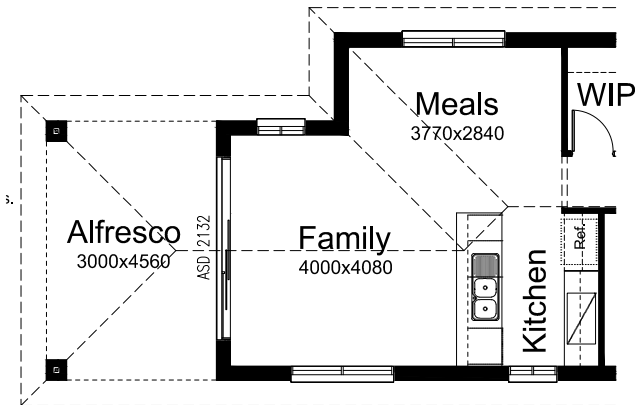
OPTION LD1

Provide laundry option with
1 No. 800mm base cupboard,
1 No. 600mm base cupboard,
1 No. 800mm overhead cupboard,
1 No. 600mm overhead cupboard,
Additional benchtop and tiles to suit.



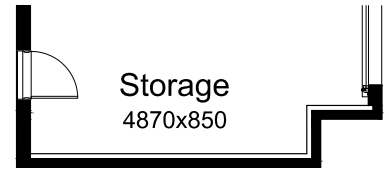
OPTION EP1

Provide 3000mm x 4560mm Alfresco to rear of Meals room with
1no. ASD2123 aluminium sliding door to meals,
2no. 350mm x 350mm brick piers on strip footings,
Earth floor to Alfresco.
Increases area by 13.68m².
Increases length by 3000mm.



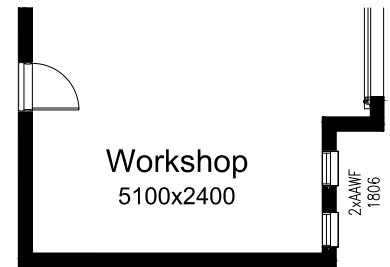
OPTION G1

Provide extension to Garage to create additional Storage area.
Increases area by 4.55m².
Increases width by 850mm.



OPTION G2

Provide Workshop to Garage including
2no. AAWF 1806 aluminium feature awning windows
Increases area by 13.39m².
Increases width by 2400mm.



OPTION G3

Provide double car Garage including
1no. roller door to front.
Increases area by 15.50m².
Increases width by 2170mm.

