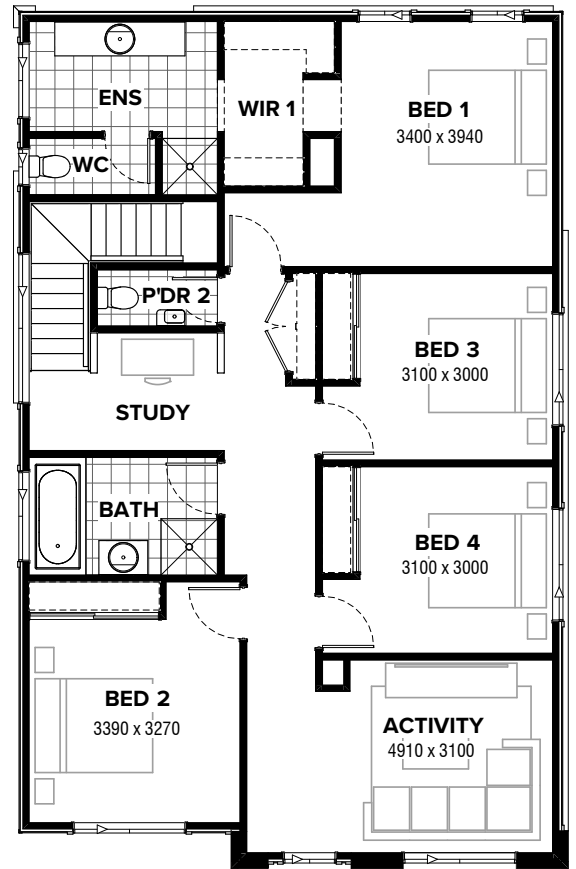


GROUND FLOOR



FIRST FLOOR

Facades available:

Bradshaw, Bradbury, Kingsley,	
Kingston, Nouveau, Traditional,	
Urban	
Overall home width	11.27m
Overall home length	13.79m

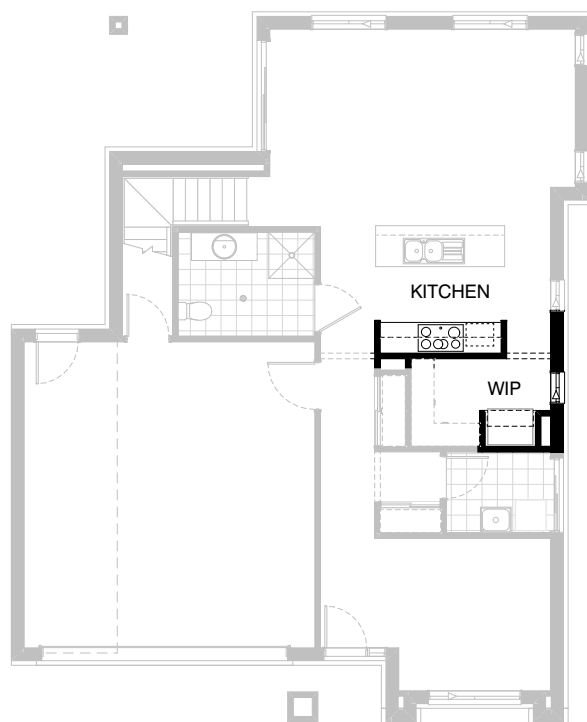
Residence	236.2m ²	25.4sq
Garage	37.4m ²	4.0sq
Porch	2.3m ²	0.2sq
Alfresco	7.6m ²	0.8sq
Total	246.1m²	26.5sq

FLOORPLAN OPTIONS

We personalise our floorplans. Talk to us about our huge range of ready-to-go design options.

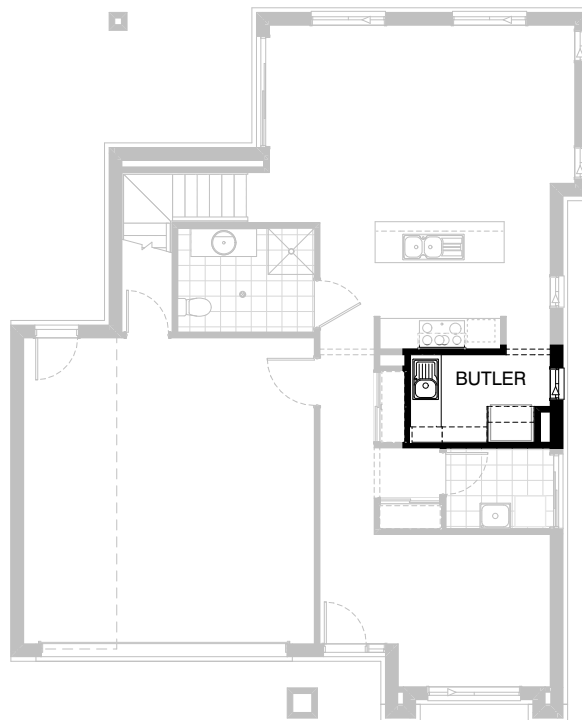
Listed details based on Traditional facade floorplan (illustrated)

*Copyright conditions. All photos and illustrations are representative only. Floor plans and specifications may be varied by Burbank without notice, the dimensions are diagrammatic only and a Building Contract with final drawings will display correct dimensions and detail. All designs are the property of Burbank and must not be used, reproduced, copied or varied, wholly or in part without written permission from an authorised Burbank representative. Copyright Burbank Australia (QLD) Pty Ltd. ABN 77 103 014 615. QBCC 1046544.



Option Kitchen01

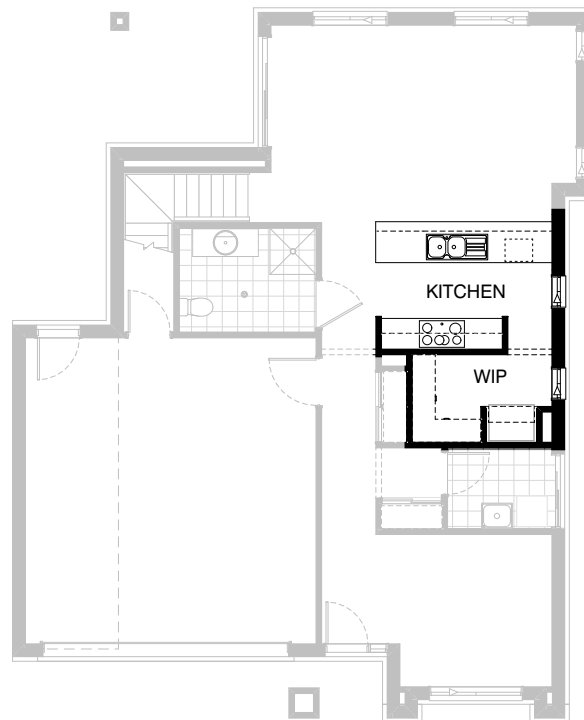
Provide kitchen upgrade option including:
2No. 700mm overhead cupboards
and Open shelf above fridge space.
Island bench to remain standard.



Option Kitchen02

Provide Butler's pantry in lieu of WIP including:

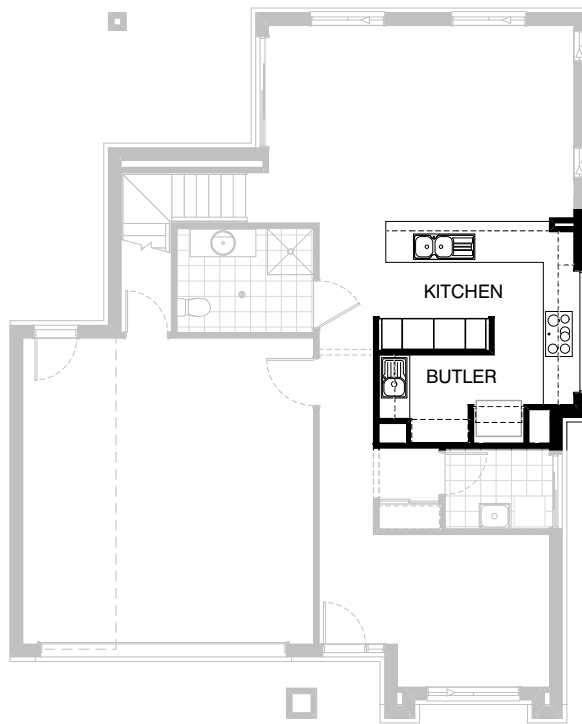
- 1No. 900mm base cupboard,
- 1No. 450mm base cupboard,
- 1No. 900mm open shelf above fridge space,
- 1No. single bowl sink,
- 1800mm(h) x 300mm (w) adjustable open shelf unit,
- Revert the fridge space plastered wall to laminate panel.



Option Kitchen03

Provide upgrade option with galley style benchtop including:

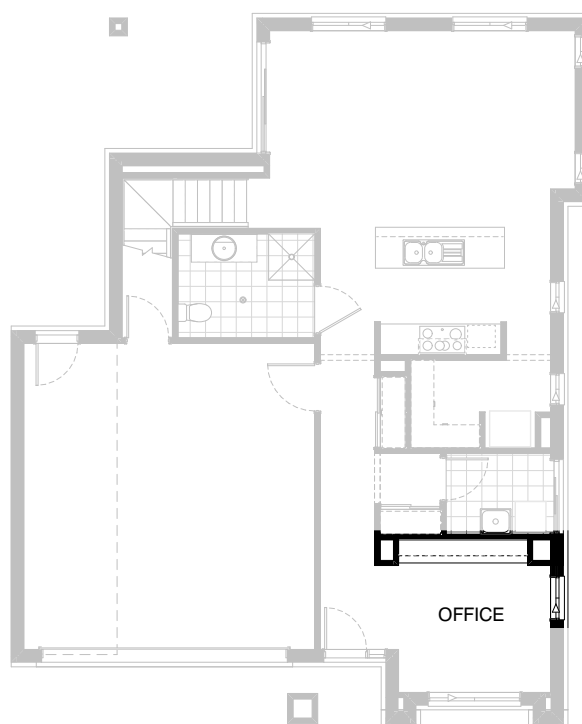
- 1No. microwave provision with pot drawer,
 - 1No. 900mm electric cooktop,
 - 1No. 900mm retractable rangehood,
 - 1No. dishwasher provision,
 - 1No. 900mm base cupboard,
 - 1No. 450mm base cupboard,
 - 1No. 300mm base cupboard,
 - 1No. 450mm drawer unit,
 - 2No. 700mm overhead cupboards,
 - 2No. 700mm base cupboard and
900mm open shelf above fridge space.
- Additional benchtop and tiled splashback.



Option Kitchen04

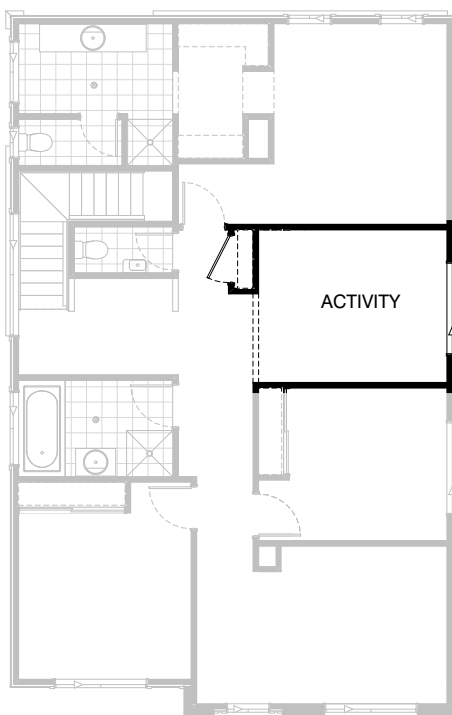
Provide Kitchen upgrade option providing Butler's Pantry in lieu of Walk-in Pantry including:

- 900mm retractable rangehood,
- 900mm electric cooktop,
- dishwasher provision,
- 2No. oven towers with 600mm ovens and microwave provisions,
- 2No. 400mm full height laminate Pantry cupboards with 5No. 450mm deep shelves,
- 4No. 900mm base cupboards,
- 1No. 900mm blind base cupboard,
- 1No. 450mm base cupboard,
- 1No. 450mm drawer unit,
- 2No. 900mm overhead cupboards,
- 1No. 900mm open shelf over refrigerator space,
- 1No. 600mm open shelf,
- additional benchtop and tiled splashback to suit.
- Butler's includes:
- 1No. 800mm base cupboard,
- 1No. 350mm base cupboard,
- 1No. 800mm overhead cupboard,
- 1No. 350mm overhead cupboard,
- single bowl sink with additional benchtop and tiled splashback to suit.
- Option also removes Linen from Passage and provide space to Butler's pantry.
- Remove 2No. ASW1806 sliding windows and provide 1No. AFW0524.



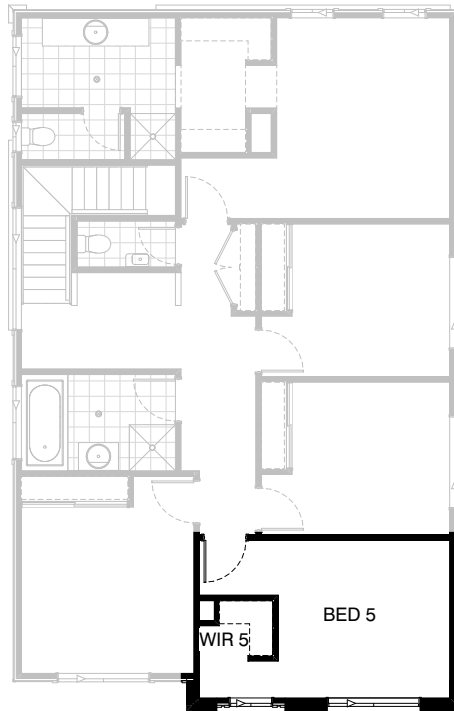
Option Internal01

Provide built-in joinery option to Office including:
450mm deep 32mm laminate benchtop,
3No. 800mm TV cupboard drawer units,
3No. 800mm overhead cupboards.
Option also provides ASW 1809 sliding window.



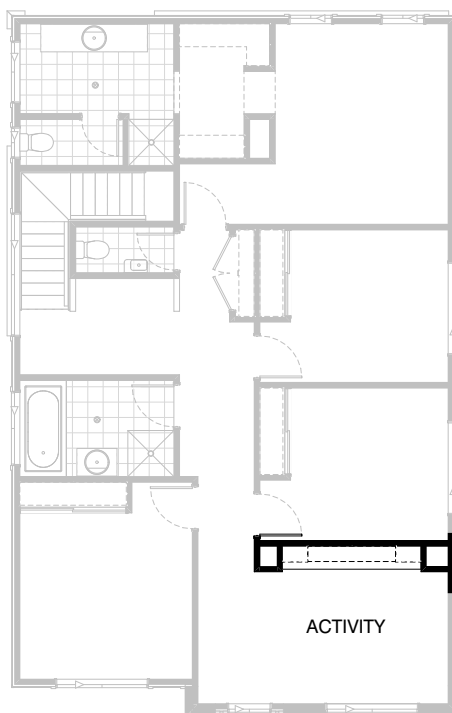
Option Internal02

Provide Activity option in lieu of Bed 3 by removing bed 3 hinged door and built-in robe.
Reducing the size of the linen and
Provide 920mm hinged door in lieu of sliding door.



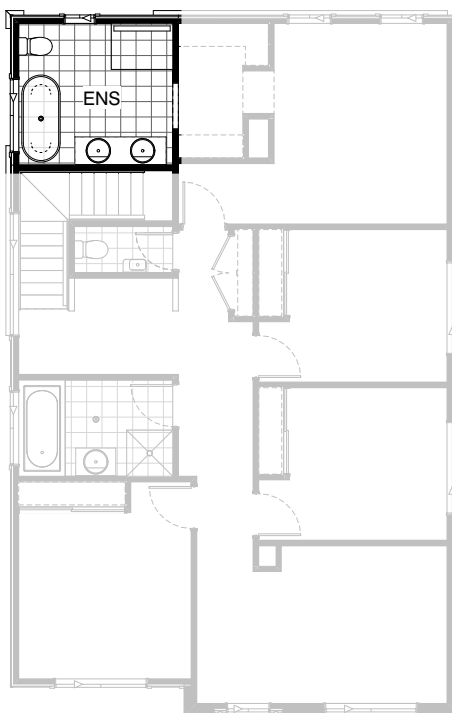
Option Internal03

Provide 5th bedroom option in lieu of activity by providing
1No. 820mm entry door and create a WIR.
Relocate the void to WIR to allow easy access to bedroom.



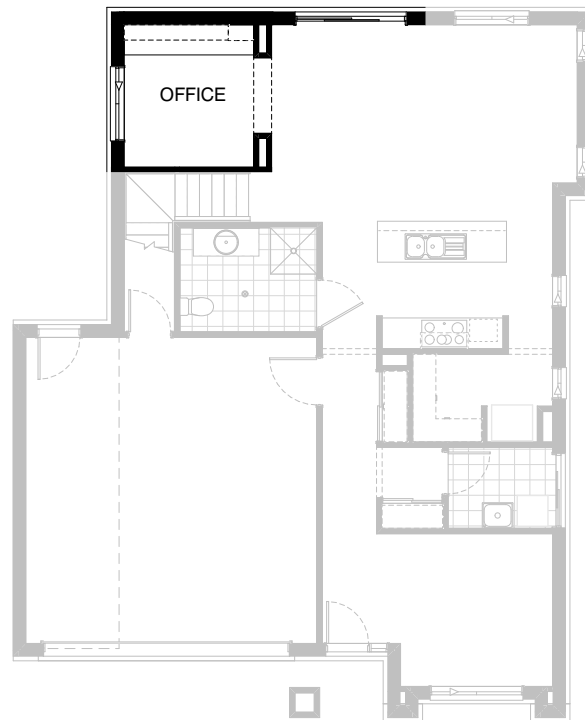
Option Internal04

Provide built-in joinery option to Activity room including:
450mm deep 32mm laminate benchtop,
1No. 1000mm TV cupboard drawer unit,
2No. 800mm TV cupboard drawer units,
2No. 450mm open shelves unit and
2No. 300mm deep open shelves above.



Option Ensuite01

Provide Ensuite upgrade option by provide 900x1200mm tiled shower base with grate drain in lieu of standard,
1782mm wide vanity with double basin in lieu of standard and additional freestanding bath.
Option also provides ASW1806 in lieu of standard.



Option External01

Provide Office in lieu of Alfresco by removing

1No. brick pier.

Close both open sides with brick veneer,

Adjust internal walls to suit,

Provide:

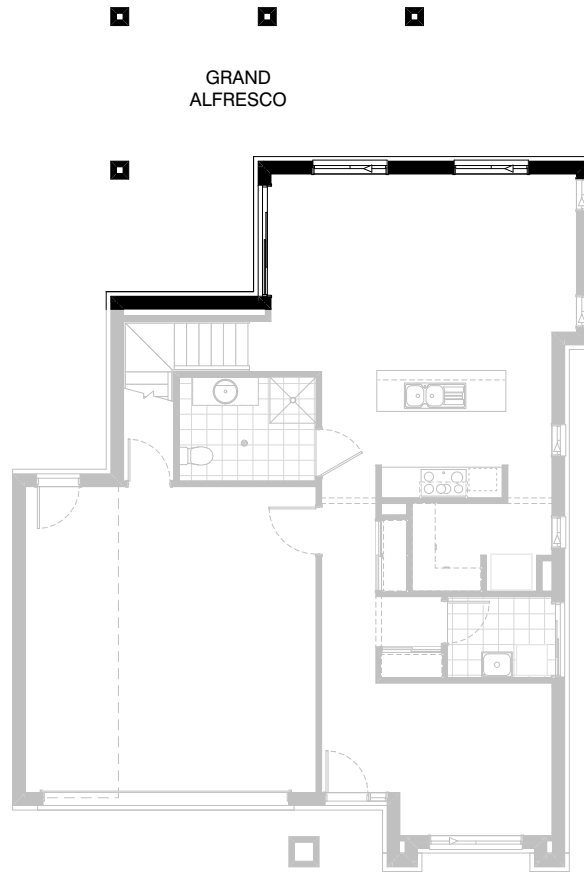
1No. 600mm deep 32mm thick laminate benchtop,

1No 450mm open shelve unit,

2No. 60mm thick 300mm deep open shelves and

Relocate 1No. ASW 2015 sliding window from Meals to Office.

Relocate Alfresco ASD 2121 sliding door to rear of the Meals.

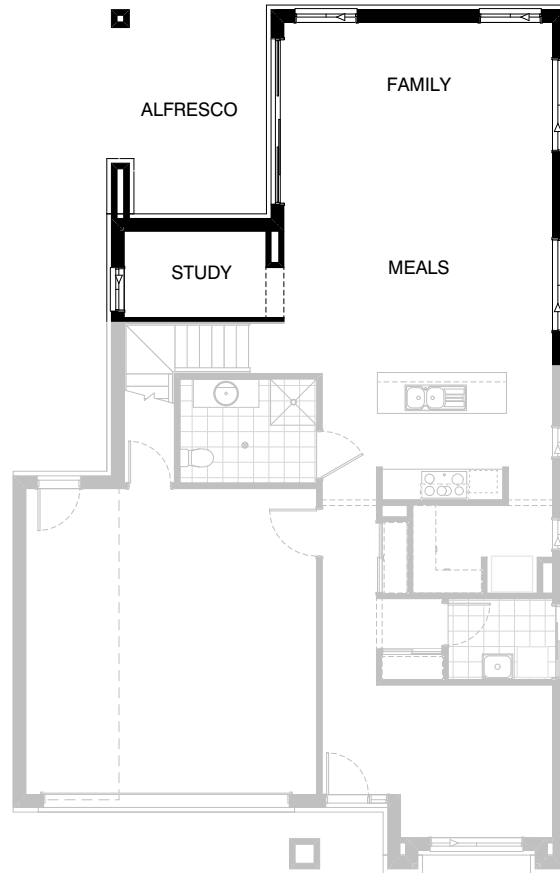


Option External02

Provide Grand alfresco to the rear of the house by 3000mm with additional 3No. brick piers and tiled roof.

Notes:

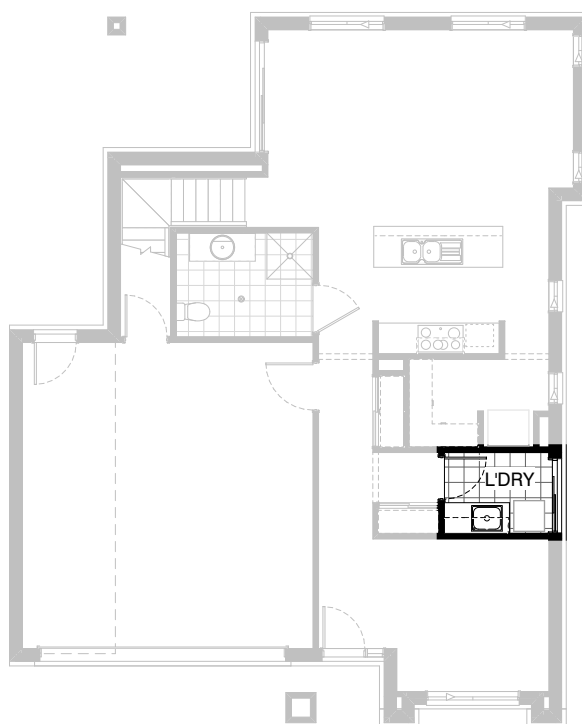
-Min. block size 14mx23m



Option External03

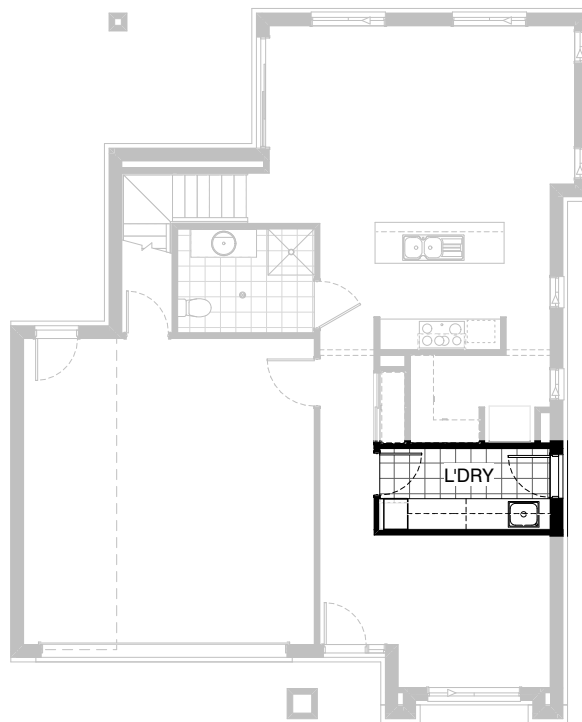
Extended floor plan option by providing additional 3000mm length to Family, delete Family protrusion & stair plumbing stack and provide 1560mm extension to create Study with 1No. ASW1809 sliding window. Alfresco length increases 1440mm & area by 5.1m². Ground floor area increases by 19.8m². Provide 350mm x 1080mm engaged pier to Study/Alfresco. Provide 2No. ASW 1818 sliding windows to Family/Meals in lieu of 2No. ASW 1806 windows. Provide 2No. ASW 2012 sliding windows to Family/Meals in lieu of 2No. ASW 2015 windows. Provide: ASD 2132 sliding door to Alfresco in lieu of ASD2121 door.

Note:
First floor remains unchanged.



Option Laundry01

Provide Laundry upgrade including
1No. 800mm base cupboard,
1No. 400mm base cupboard,
1No 800mm overhead cupboard,
1No. 400mm overhead cupboard.
Additional benchtop and tiled splashback to suit.



Option Laundry02

Provide Laundry upgrade including laminate base and overhead cupboards and stainless steel inset trough including

- 1No. 900mm base cupboard,
- 1No. 450mm base cupboard,
- 3No. 900mm overhead cupboards,
- 1No. 450mm full height laminate Linen cupboard, increase benchtop height to 950mm, additional benchtop and tiled splashback to suit. Option also provides open space under bench for washer and dryer side-by-side.

Note: this option remove linen and relocating Linen's hinge door.



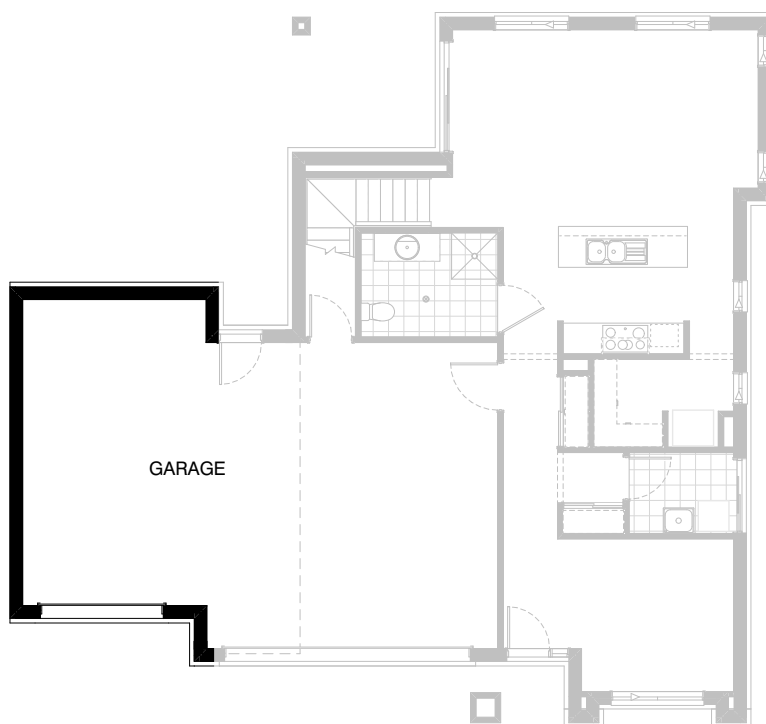
Option Garage01

Provide extension to Garage to create additional Storage area with additional window to suit.
Increases area by 9.48m².
Increases width by 1680mm.



Option Garage02

Provide extension to Garage to create Workshop area including additional window to suit.
Increases length by 2400mm.
Increases area by 13.54m².



Option Garage03

Provide triple car Garage including additional Garage door as per colour selection.
Increases area by 23.73m².
Increases width by 3600mm.