

FLOORPLAN OPTIONS

We personalise our floorplans. Talk to us about our huge range of ready-to-go design options.

Facades available:

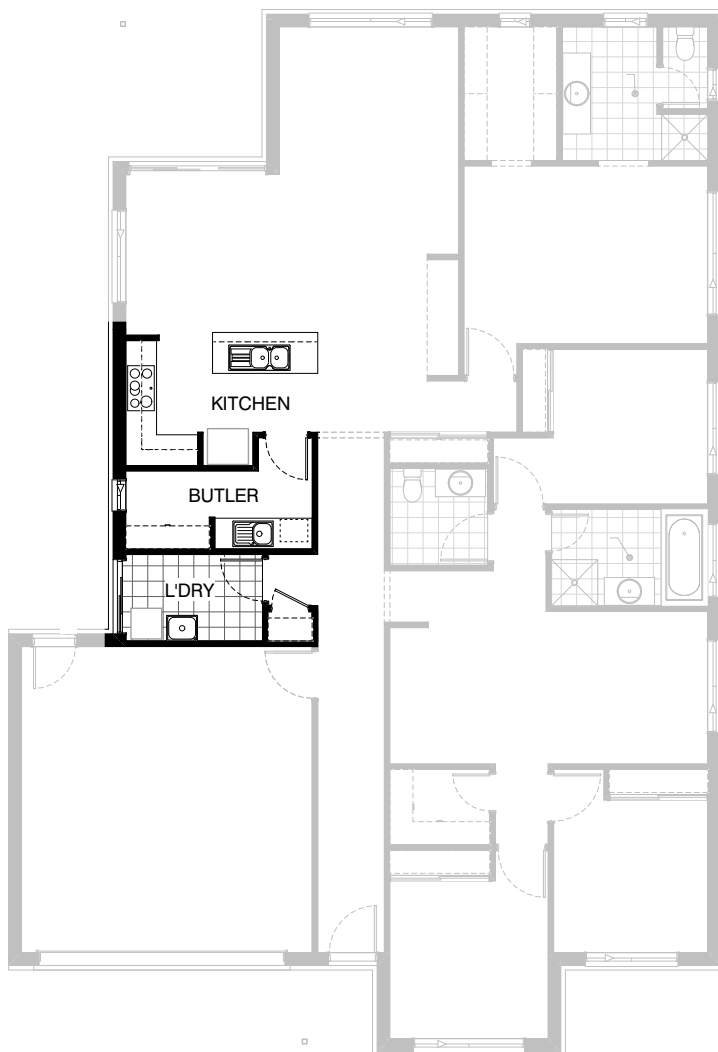
Coastal, Delta, Kingston, Nouveau
Salisbury, Traditional, York

Overall home width 13.91m

Overall home length 20.27m

Residence	231.3m ²	24.9sq
Garage	37.6m ²	4.0sq
Porch	2.7m ²	0.3sq
Alfresco	8.6m ²	0.9sq
Total	242.6m²	26.1sq

Listed details based on Traditional facade floorplan (illustrated)



Option Kitchen01

Provide Kitchen upgrade option which creates a Butler's pantry in lieu of the WIP, moves location of Refrigerator space and creates L-Shaped additional benchtops and base cupboards.

Kitchen Island includes:

1No. 450mm drawer unit,
1No. 900mm base cupboard, dishwasher provision,
double bowl sink.

Kitchen Includes:

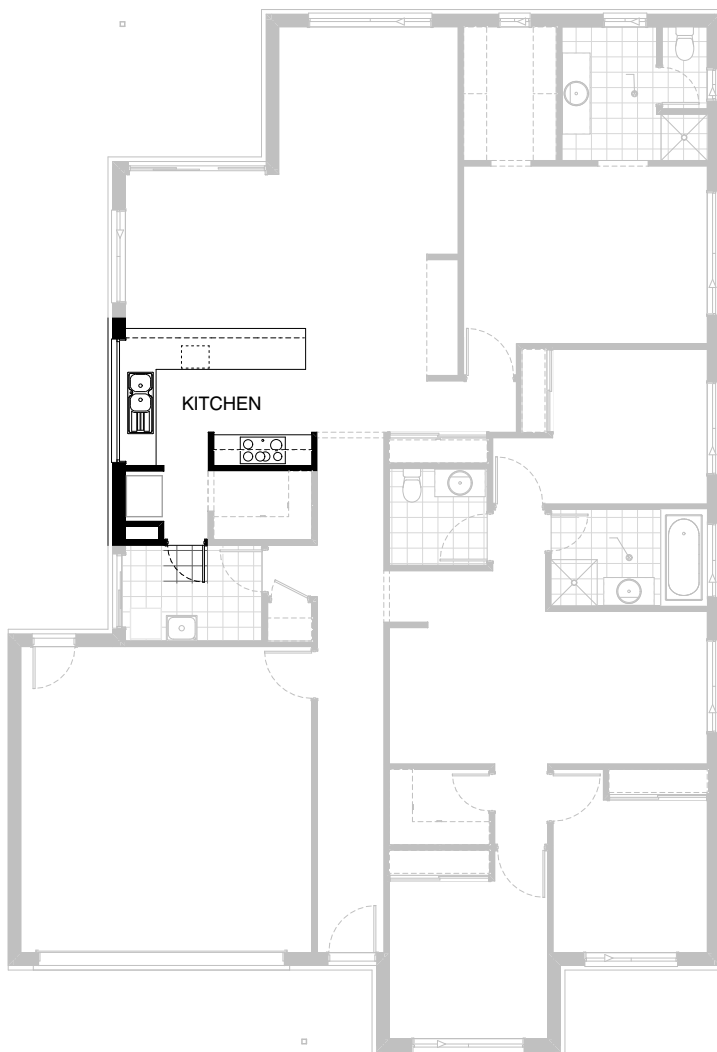
2No. 450mm base cupboards,
1No. 800mm blind base cupboard,
1No. 400mm base cupboard,
1No. 600mm corner overhead cupboard,
1No. 700 overhead cupboard,
2No. 450mm overhead cupboards,
900mm appliances,

Pantry Includes:

1No. microwave provision with pot drawer,
2No. 600mm base cupboards, single bowl sink,
4No. 450mm shelves.

additional benchtop and tiled splashback to suit.

Replace AFW0524 with ASW2006 fixed window to butlers and provide.
Reduce L'dry by 120mm and increase kitchen area.



Option Kitchen02

Provide Kitchen upgrade which moves location of Refrigerator space and creates L-Shaped additional benchtops and base cupboards.

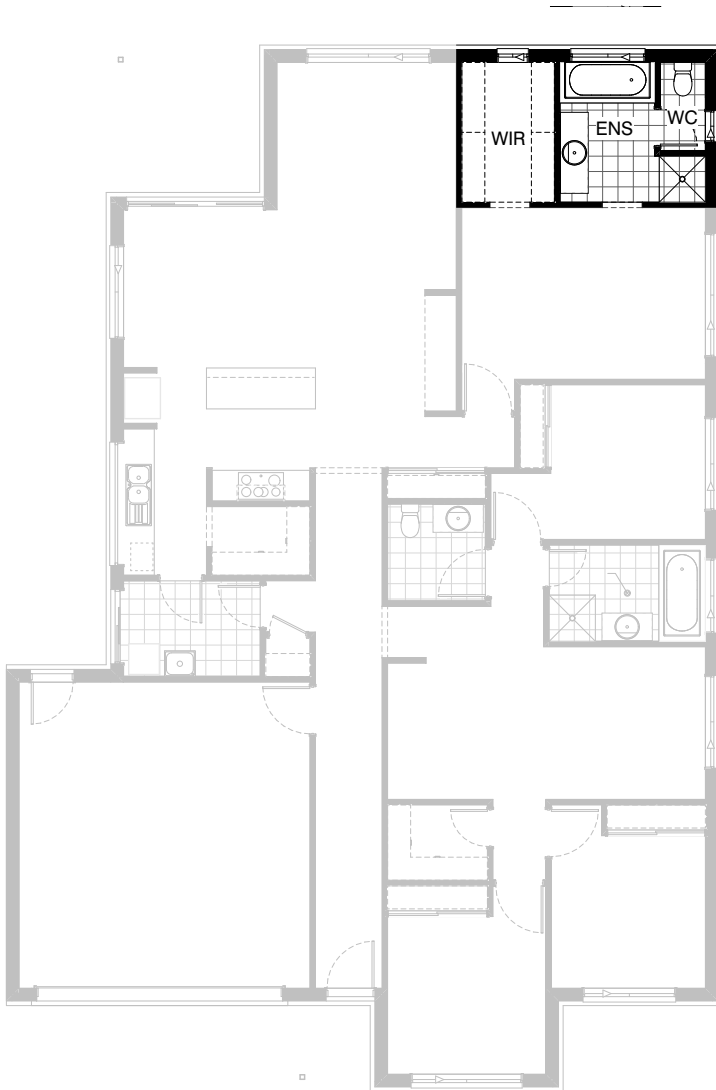
Kitchen includes:

- 1No. 450mm drawer unit,
- 2No. 900mm base cupboards,
- 1No. 1050mm base blind cupboard,
- 1No. 300mm base cupboard,
- 1No. 450mm base cupboards,
- 2No. 450mm overhead cupboards,
- dishwasher provision,
- microwave provision with pot drawer,
- double bowl sink.



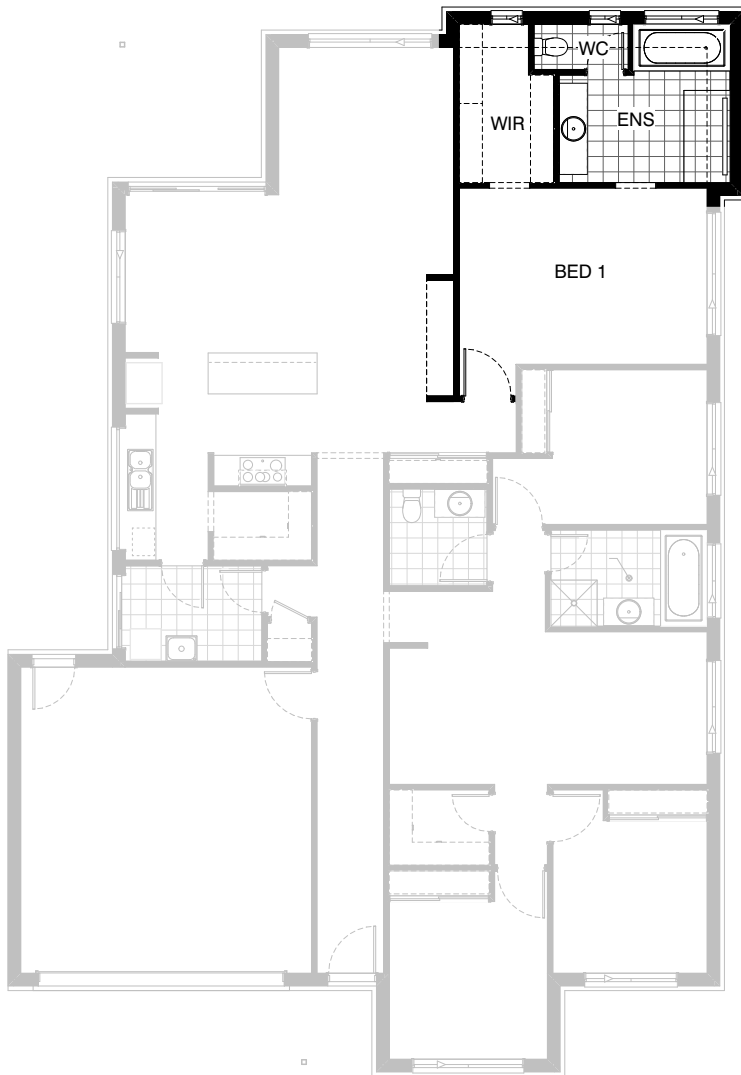
Option Ensuite01

Provide Ensuite upgrade which rearranges the layout. Replace 900x900mm Shower Base with 1500x900mm and additional ASW0312mm window in the shower area, 1482mm single vanity ILO 1582mm single Vanity.



Option Ensuite02

Provide Ensuite upgrade with 1675mm bathtub and ASW1215 sliding window ILo of ASW1809 sliding window.



Option Ensuite03

Provide Ensuite upgrade which rearranges the layout and provides 450mm projection in both directions. Additional bathtub with ASW1215 and 1800x900mm Shower base ilo 900x900mm. Family to be reduced by 40mm.



Option External01

Provide floor plan option with mirrored rear section of the home.



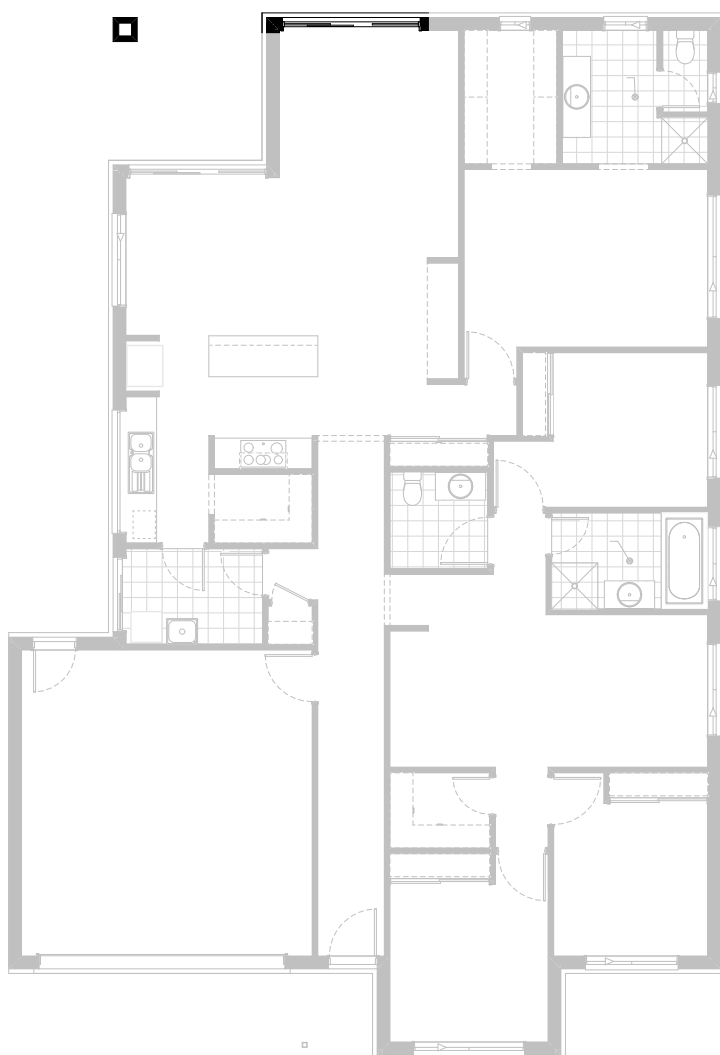
Option External02

Provide Grand Alfresco option including tiled roof over and additional 3No. 470x470mm brick piers. Adds 3000mm of length to the building footprint.

Note:
Available only to 30+ LOT length



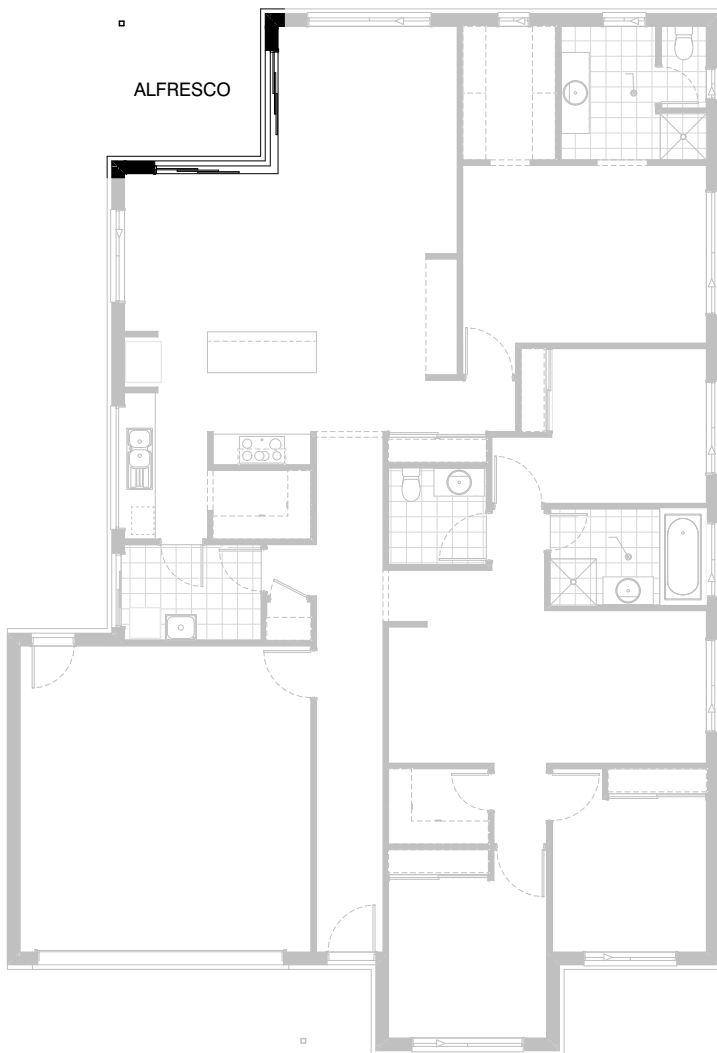
GRAND ALFRESCO



Option External03

Provide L-Shape Alfresco option including tiled roof over and additional 4No. 470x470mm brick piers. Adds 3000mm of length to the building footprint and additional 19.4sqm to the total covered area..

Note:
Available only to 30+ LOT length



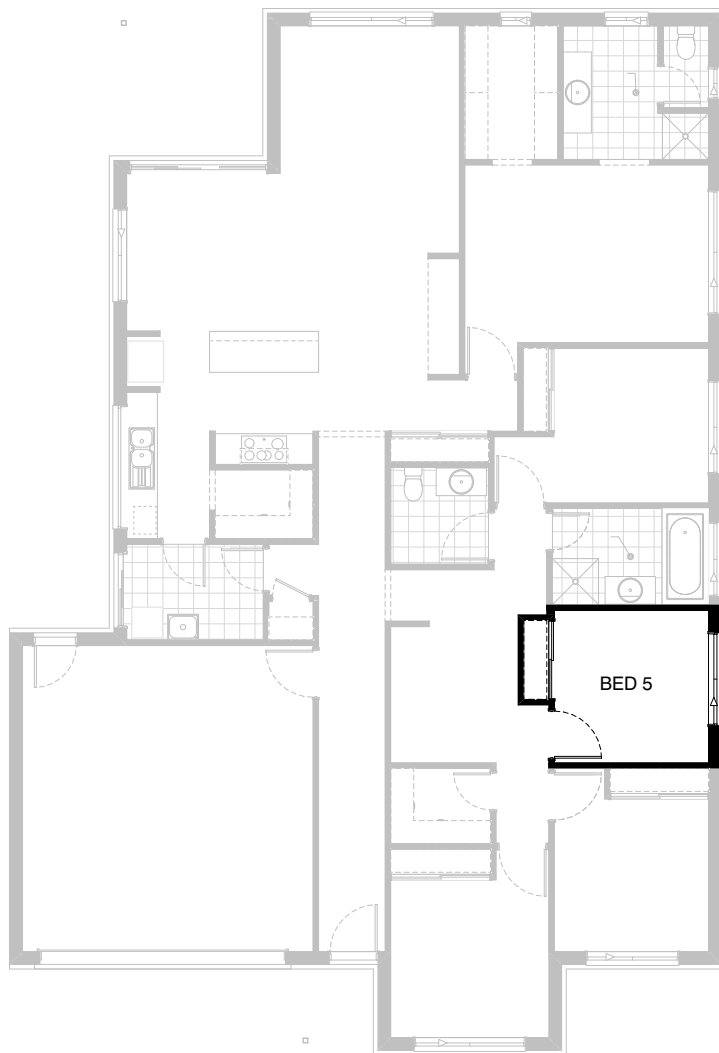
Option External04

Provide ACSD2124-24 corner sliding door
in lieu of ASD2127 sliding door.



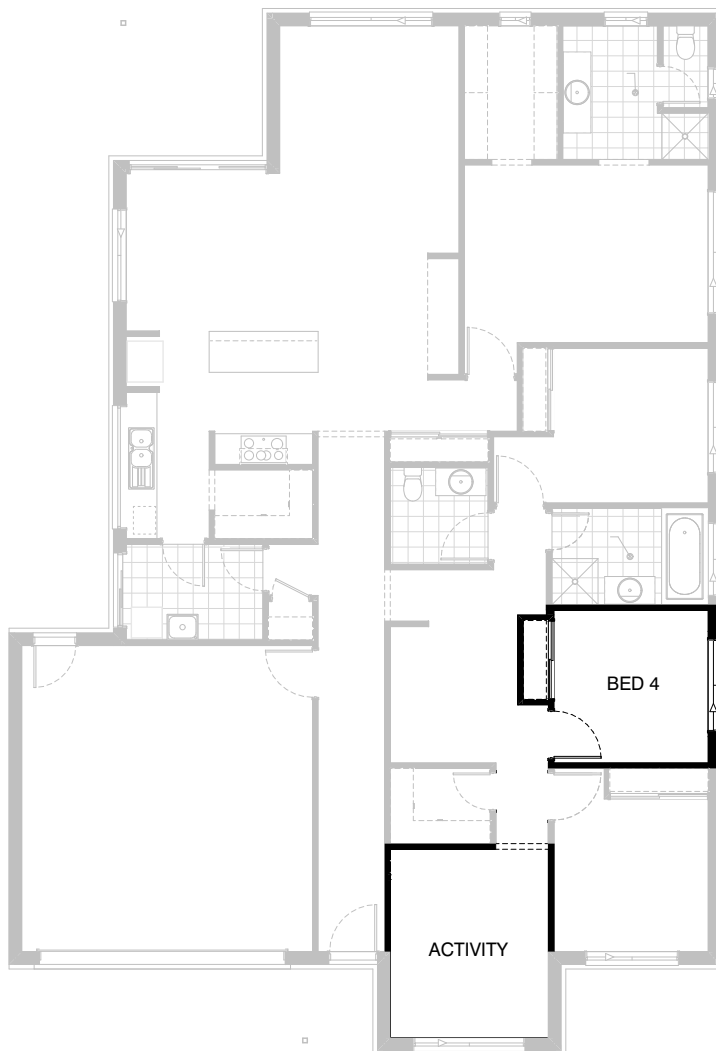
Option Internal01

Provide Bath upgrade by projecting area under the eaves by 450mm and increasing tiled shower base to 1200mm x 900mm.



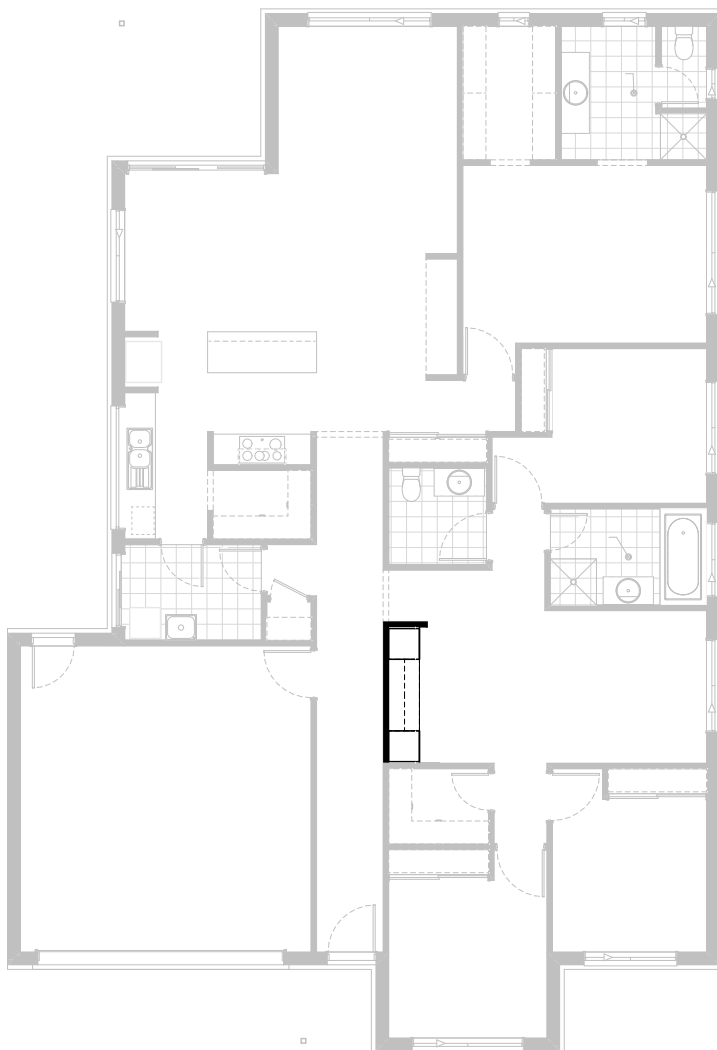
Option Internal02

Provide 5th Bedroom option in lieu of Activity.
Including 920mm hinged door, built-in Robe
with sliding doors and 4No. 450mm shelves.



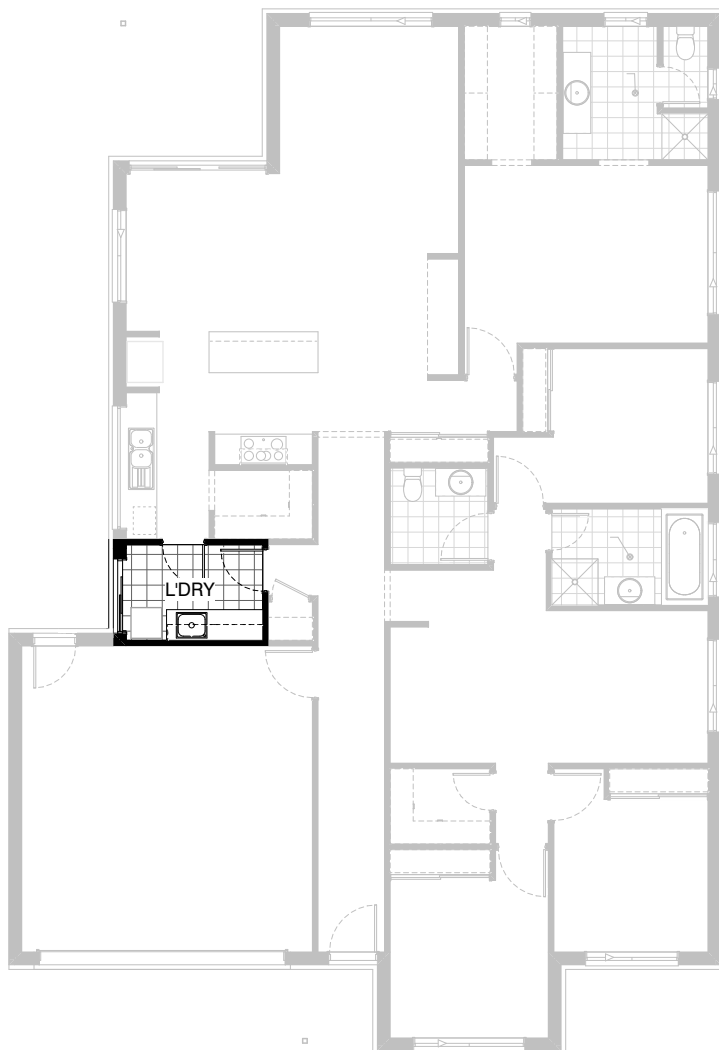
Option Internal03

Provide floor plan option which swaps locations of Bed 4 and Activity moving Activity to front of the home. Replace ASW1818 window with ASW1218 to relocated Bed 4.



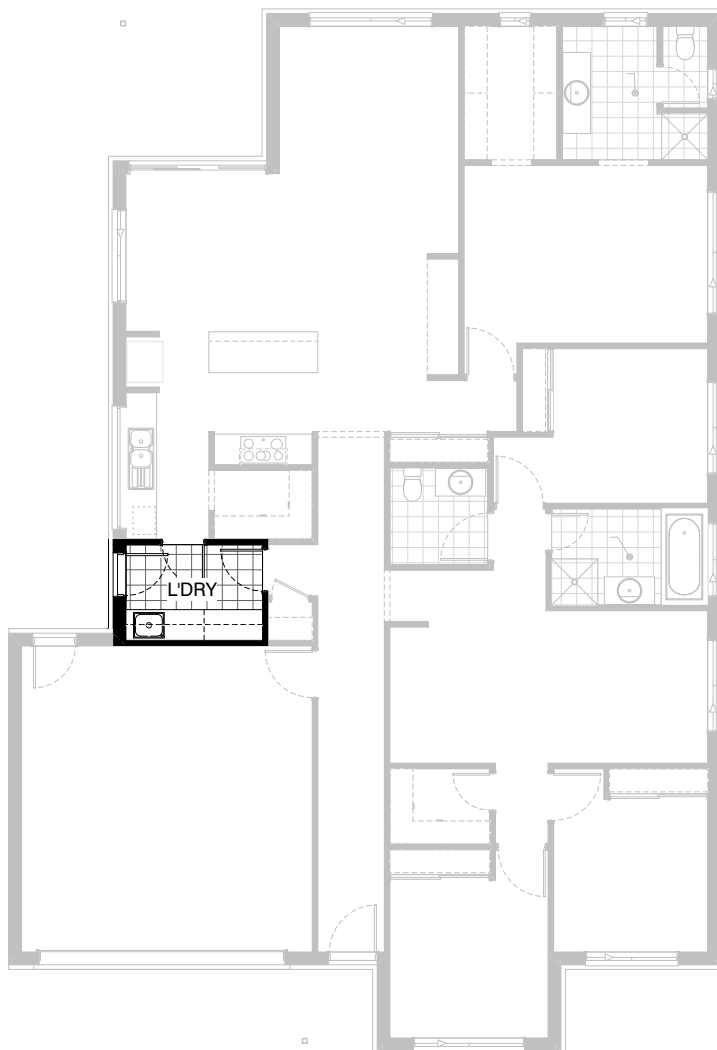
Option Internal04

Provide floor plan option with 2No. 600mm wide
Pantry cupboards, 2No. 700mm overhead cabinets
and built-in desk to Study area. Pantry cupboards
include 4No. 450mm shelves.



Option Laundry01

Provide Laundry upgrade including laminate base cupboards and stainless steel inset trough including:
2No. 900mm base cupboard,
2No. 900mm overhead cupboard,
additional benchtop and tiled splashback to suit.



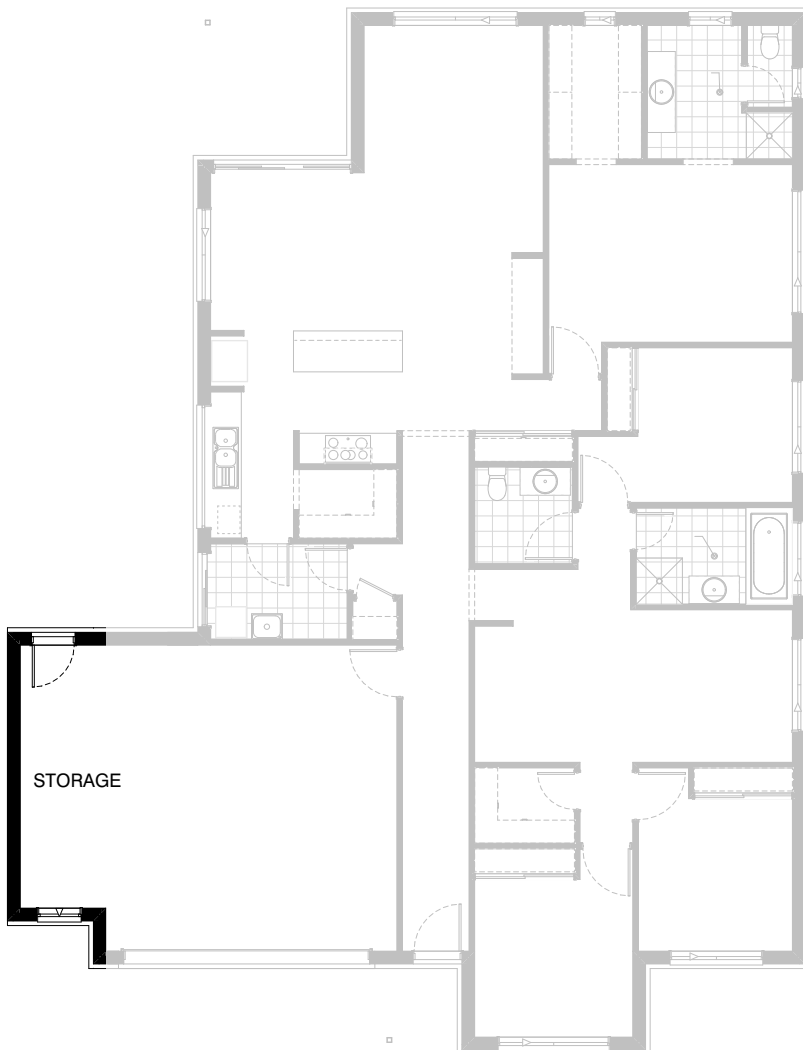
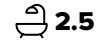
Option Laundry02

Provide Laundry upgrade including laminate base and overhead cupboards and stainless steel inset trough including

1No. 800mm base cupboard,
1No. 450mm base cupboard,
2No. 900mm overhead cupboards,

1No. 800mm overhead cupboard,
additional benchtop and tiled splashback to suit.
Option also provides open space under bench
for washer and dryer side-by-side.

1No 820mm external hinged door in lieu of glass sliding door.



Option Garage01

Provide extension to Garage to create additional Storage area with additional window to suit.
Increases area by 9.06m².
Increases width by 1680mm.



Option Garage02

Provide extension to Garage to create Workshop area including additional window to suit.
Increases length by 2400mm.
Increases area by 12.93m².



Option Garage03

Provide triple car Garage including additional
Garage door as per colour selection.
Increases area by 23.85m².
Increases width by 3600mm.