

**Facades available:**

Coastal, Delta, Kingston, Nouveau Salisbury, Traditional, York
<b>Overall home width</b> 8,630mm
<b>Overall home length</b> 20,990mm

Residence	114.3m <sup>2</sup>	12.3sq
Garage	23.7m <sup>2</sup>	2.6sq
Porch	1.7m <sup>2</sup>	0.32sq
Alfresco	10.8m <sup>2</sup>	1.2sq
<b>Total</b>	<b>150.5m<sup>2</sup></b>	<b>16.2sq</b>

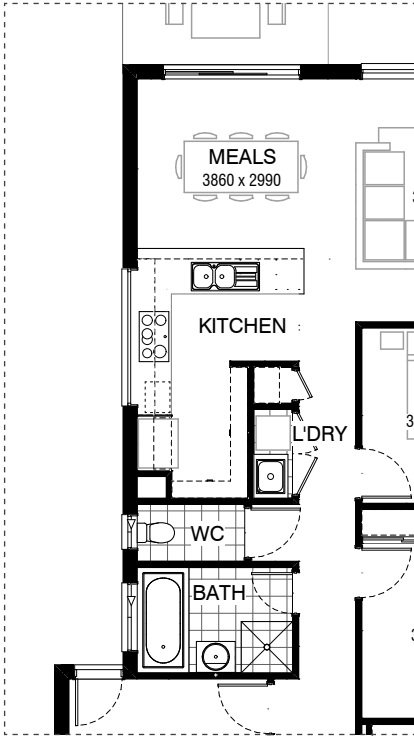
**FLOORPLAN OPTIONS**

We personalise our floorplans. Talk to us about our huge range of ready-to-go design options.

Listed details based on Traditional facade floorplan (illustrated)

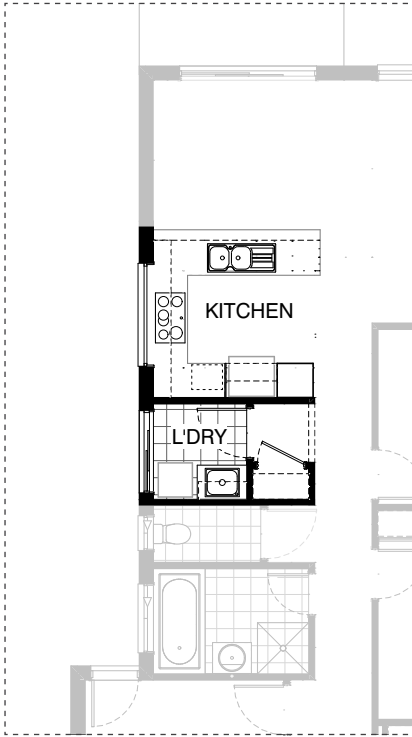
\*Copyright conditions. All photos and illustrations are representative only. Floor plans and specifications may be varied by Burbank without notice, the dimensions are diagrammatic only and a Building Contract with final drawings will display correct dimensions and detail. All designs are the property of Burbank and must not be used, reproduced, copied or varied, wholly or in part without written permission from an authorised Burbank representative. Copyright Burbank Australia (QLD) Pty Ltd. ABN 77 103 014 615. QBCC 1046544.

**Call 13 BURBANK**  
**Visit [burbank.com.au](http://burbank.com.au)**

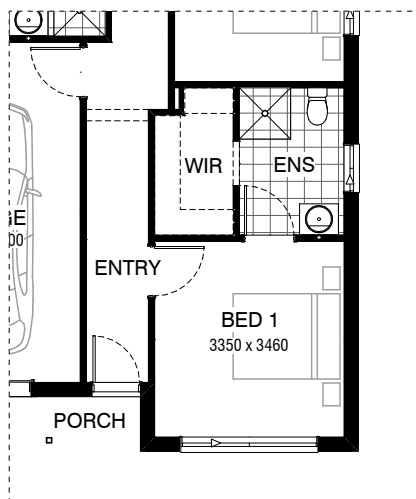
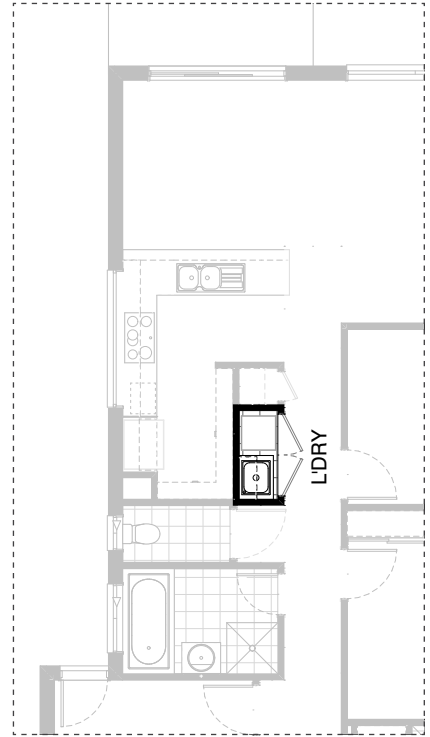


Master Kitchen & Laundry

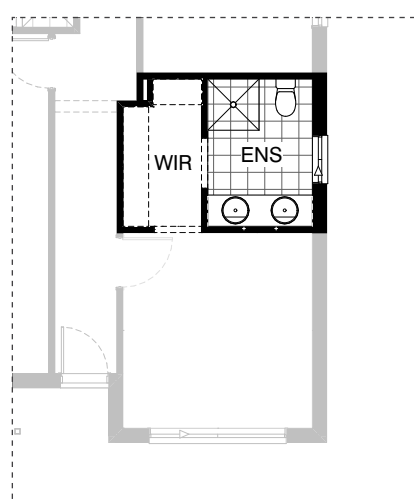
**K01**



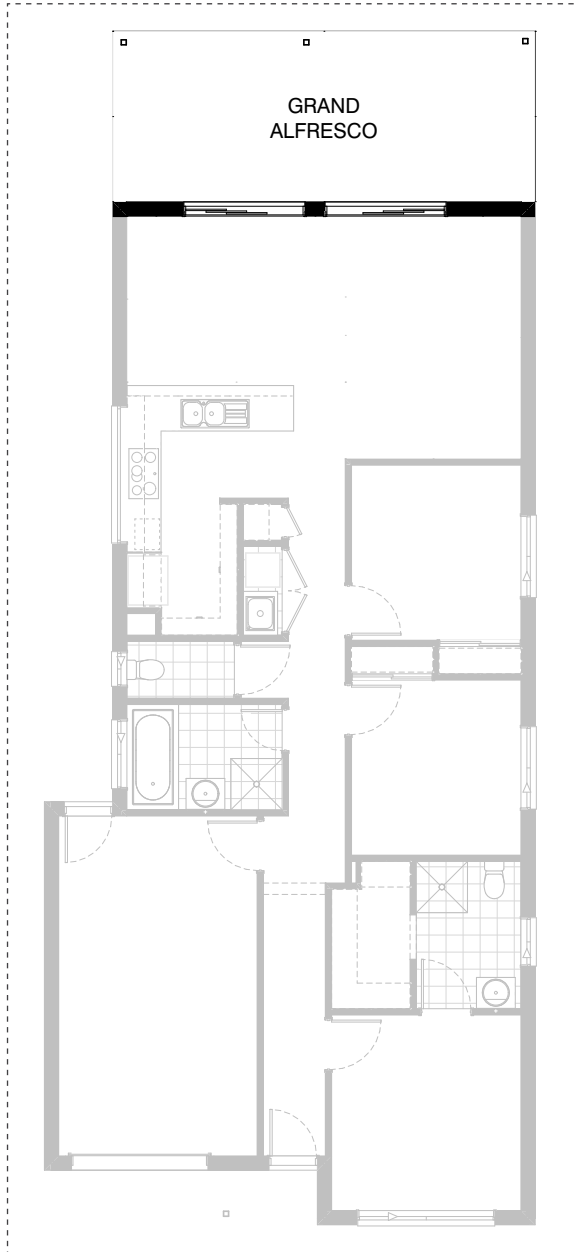
**L01**



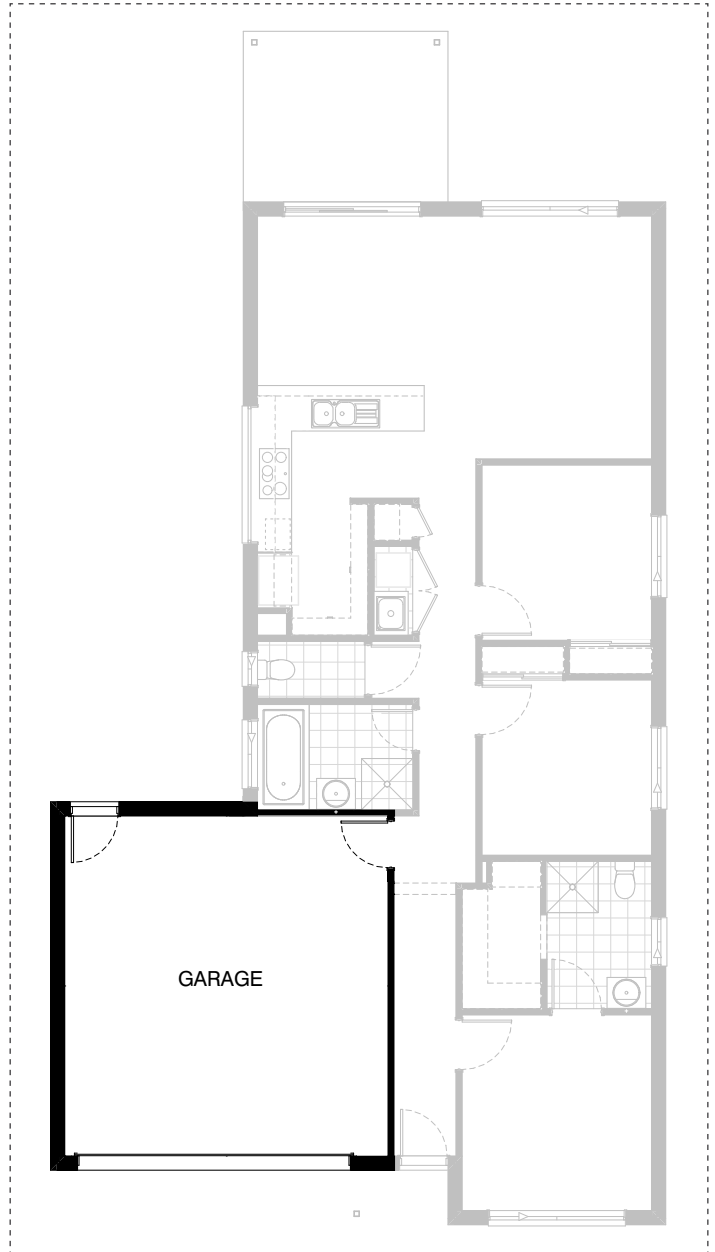
Master Ensuite



**EN01**



**EX01**



**G01**

**OPTION DESCRIPTIONS****K01 - Kitchen Option 01**

Provide U-shaped Kitchen upgrade option, including:  
additional benchtop and tiled splashback,  
relocated Ref space with 900mm laminate open shelf,  
900mm under bench oven,  
900mm retractable rangehood,  
dishwasher provision,  
microwave provision with pot drawer,  
1No. 450mm drawer unit,  
1No. 900mm base cupboard,  
1No. 900mm corner base cupboard with bi-fold door,  
1No. blind corner cupboard with 350mm door,  
2No. 900mm overhead cupboards,  
1No. 600mm full height cupboard,  
1No. 514mm x 1810mm Aluminium fixed window behind cooker.  
Provide Laundry upgrade within option, including:  
32mm laminate benchtop,  
1No. 800mm base cupboard,  
1No. 800mm overhead cupboard,  
tiled splashback as required.  
Note:  
Option decreases size of Meals area by 350mm.

**L01 - Laundry Option 01**

Provide Laundry upgrade option, including:  
32mm laminate benchtop,  
1No. 700mm base cupboard,  
1No. 700mm overhead cupboard,  
tiled splashback as required.

**EN03 - Ensuite Option 01**

Provide Ensuite upgrade option, including:  
1782mm vanity with double basins,  
1840mm wide wall-to-wall benchtop,  
relocated entries to WIR and Ensuite with  
bulkhead opening in lieu of 870mm hinged door.

**EX01 - External Option 01**

Provide Grand Alfresco option, including:  
1No. additional 88mm x 88mm timber post,  
additional structural concrete slab,  
additional tiled roof over,  
2No. 2110mm x 2133mm Aluminium  
stacker sliding doors.

Note: Option increases total floor area by 11.49m<sup>2</sup>.

**G01 - Garage Option 01**

Provide double Garage option, including:  
2140mm x 4810mm wide Garage door,  
additional structural concrete slab,  
additional tiled roof over.

Note: Option increases width of the home by 2190mm  
and total floor area by 14.19m<sup>2</sup>.