

**Facades available:**

Callington, Harrogate, Kent	
Lancaster, Sheffield, Swansea	
Wiltshire, Eastwood	
<b>Overall home width</b>	<b>11.03m</b>
<b>Overall home length</b>	<b>21.59m</b>

Residence	145.5m <sup>2</sup>	15.7sq
Garage	36.3m <sup>2</sup>	3.9sq
Porch	4.6m <sup>2</sup>	0.5sq
Alfresco	8.8m <sup>2</sup>	0.9sq
<b>Total</b>	<b>195.1m<sup>2</sup></b>	<b>21.0sq</b>

**FLOORPLAN OPTIONS**

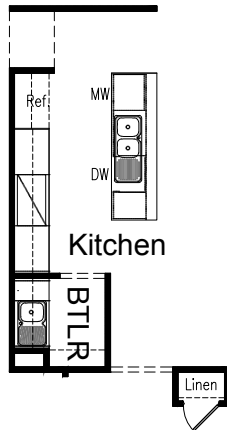
We personalise our floorplans. Talk to us about our huge range of ready-to-go design options or simply visit [www.burbank.com.au/south-australia](http://www.burbank.com.au/south-australia) for more details.

Listed details based on Sheffield facade floorplan (illustrated)

\*Copyright conditions. All photos and illustrations are representative only. Floor plans and specifications may be varied by Burbank without notice, the dimensions are diagrammatic only and a Building Contract with final drawings will display correct dimensions and detail. All designs are the property of Burbank and must not be used, reproduced, copied or varied, wholly or in part without written permission from an authorised Burbank representative. Copyright Burbank Australia (SA) Pty Ltd. ABN 96 165 533 406. BLD 266709.

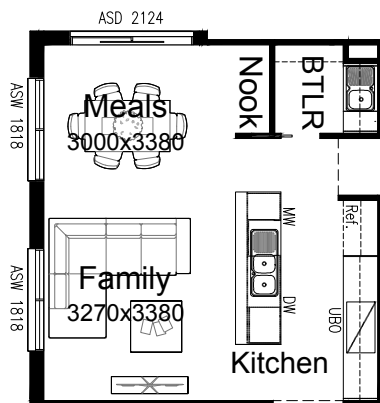
**OPTION K1**

Provide Butler's Pantry option with,  
1No. 450mm drawer unit,  
1No. Dishwasher provision,  
1No. Microwave provision with pot drawer,  
1No. 800mm base cupboard with double bowl sink to kitchen island.  
2No. 800mm Base cabinets,  
2No. 800mm overhead cupboards,  
1No. 900mm underbench oven with 900mm cooktop & 900mm retractable rangehood  
1No. 800mm base cabinet with single bowl sink,  
1No. 350mm base cabinet,  
1No. 800mm overhead cupboard,  
1No. 350mm overhead cupboard.  
Provide additional tiled splashback to butlers pantry to suit & 4No. 300mm shelves.  
Increasing length of Butlers pantry by 200mm and reducing kitchen space by 200mm.  
Increase width of Butlers pantry by 100mm and reducing Linen Cupboard by 100mm.



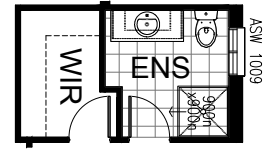
**OPTION K2**

Provide Butler's Pantry in conjunction with option EP1.  
New Butler's Pantry includes additional bench top,  
800mm base cupboard with single bowl sink,  
350mm base cupboard,  
800mm overhead cupboard,  
350mm overhead cupboard,  
4No. 300mm shelves,  
20mm cavity sliding door, additional tiled splashback to suit.



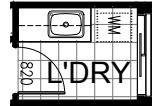
**OPTION ENS1**

Provide Ensuite option with 720mm hinged door access from Bed 1 directly to Walk-in Robe.



**OPTION LD1**

Provide Laundry upgrade with laminate base cupboards and stainless steel inset trough including  
1No. 800mm base cupboard,  
1No. 400mm base cupboard,  
1No. 800mm overhead cupboard,  
1No. 400mm overhead cupboard & additional benchtop and tiled splashback to suit.



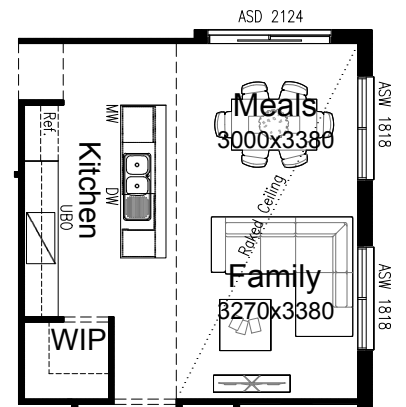
**OPTION EP2**

Provide Grand Alfresco option with additional light point & tiled roof above.  
Option adds 7.39m<sup>2</sup> to the overall house area.



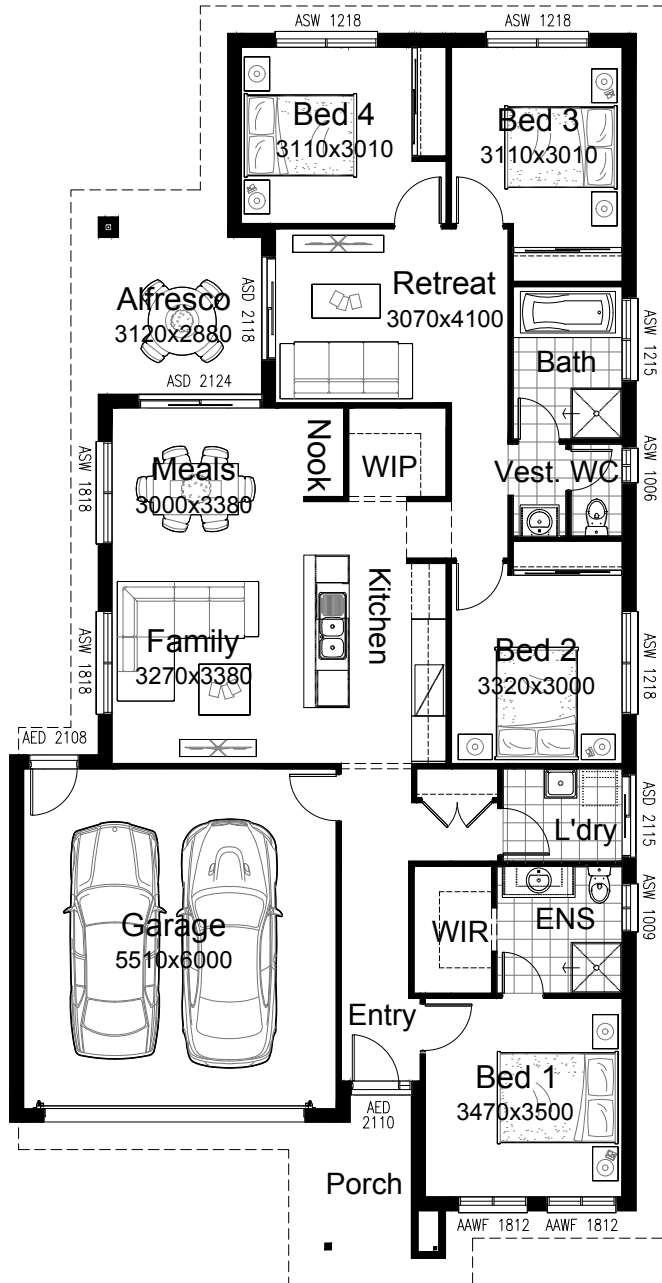
**OPTION IP1**

Provide raked ceiling option to Meals and Family with bulkhead and standard ceiling height over Kitchen & WIP.



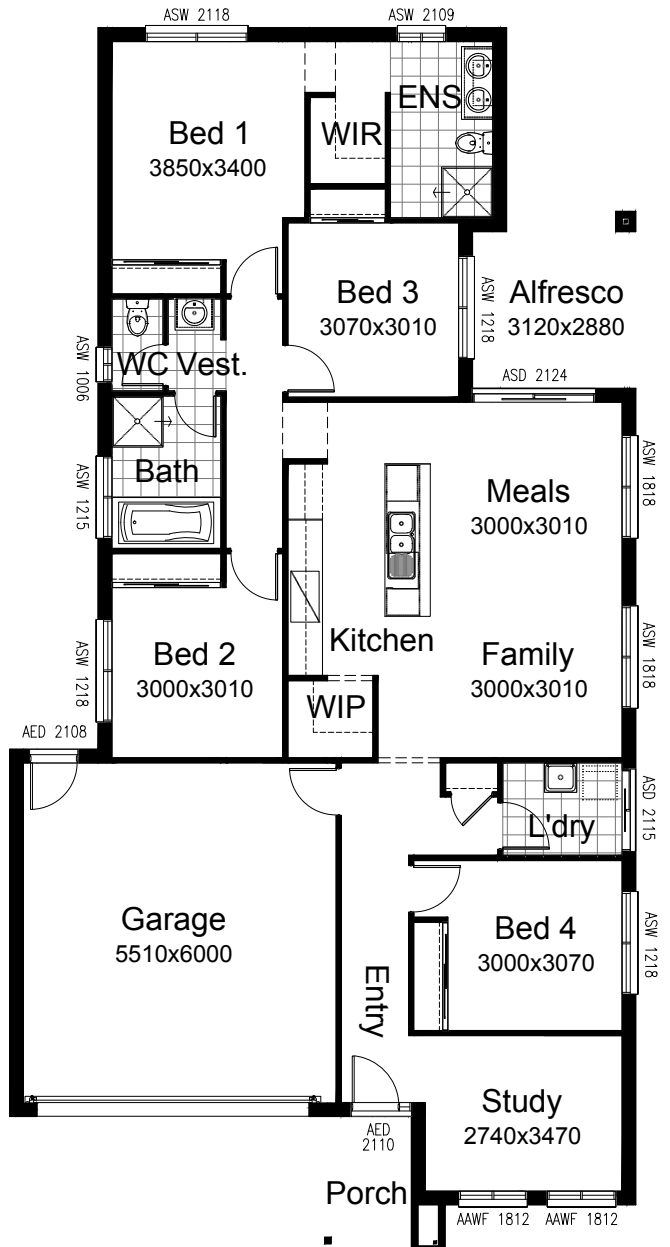
**OPTION EP1**

Provide mirrored rear section of the home. Relocate WIP & Nook to opposite side of kitchen & increase width of linen cupboard by 510mm.



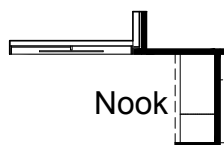
**OPTION IP3**

Provide floor plan option with Bed 1 to rear of the home. Option reduces Bed 2 length by 320mm, Remove retreat and relocated bedroom 4 to front of home with study & remove alcove to porch. Flip WC / Vest & Bathroom. Provide ASW2118 window to Bed 1, Remove ASD 2124 sliding door and provide robe with sliding doors and 450mm deep shelf to Bed 1.



**OPTION IP2**

Provide desk option to nook with 1no 450mm drawers and laminated bench top. Note - This option can only be used if Option EP1 has been chosen.



**OPTION IP4**

Provide WIR to bed 1 by reducing Bed 1 length by 320mm and relocate vanity from Vest to Bathroom. Provide additional 450mm shelving and 800mm plaster bulkhead to WIR in Bed 1.  
Note - This option can only be used if Option IP2 has been chosen.

