

**FLOORPLAN OPTIONS**

We personalise our floorplans. Talk to us about our huge range of ready-to-go design options.

Listed details based on Traditional facade floorplan (illustrated)

**Facades available:**

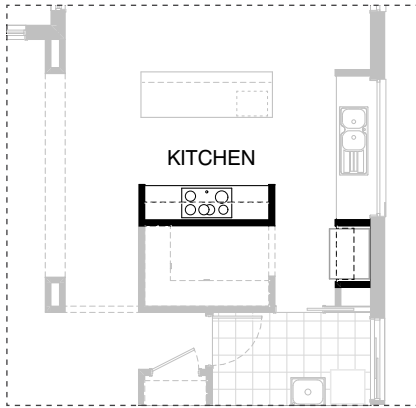
- Kingston, Kingsley, Bradshaw
- Bradbury, Nouveau, Traditional
- Urban

**Overall home width** 11,750mm  
**Overall home length** 20,270mm

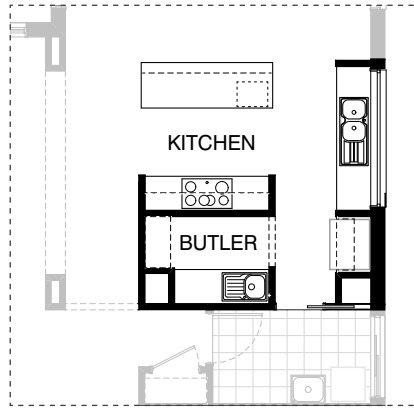
Grd Floor	143.1m <sup>2</sup>	15.4sq
First Floor	155.5m <sup>2</sup>	16.7sq
Garage	37.9m <sup>2</sup>	4.1sq
Porch	3.5m <sup>2</sup>	0.4sq
Alfresco	14.3m <sup>2</sup>	1.5sq
<b>Total</b>	<b>354.3m<sup>2</sup></b>	<b>38.1sq</b>

\*Copyright conditions. All photos and illustrations are representative only. Floor plans and specifications may be varied by Burbank without notice, the dimensions are diagrammatic only and a Building Contract with final drawings will display correct dimensions and detail. All designs are the property of Burbank and must not be used, reproduced, copied or varied, wholly or in part without written permission from an authorised Burbank representative. Copyright Burbank Australia (QLD) Pty Ltd. ABN 77 103 014 615. QBCC 1046544.

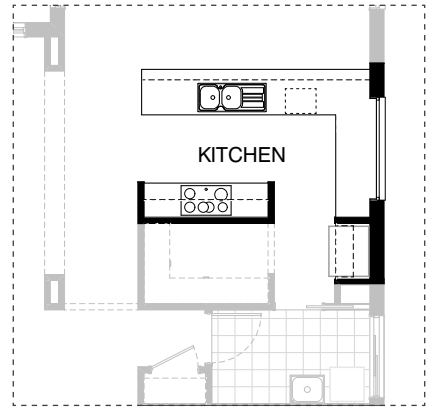
**Call 13 BURBANK**  
**Visit [burbank.com.au](http://burbank.com.au)**



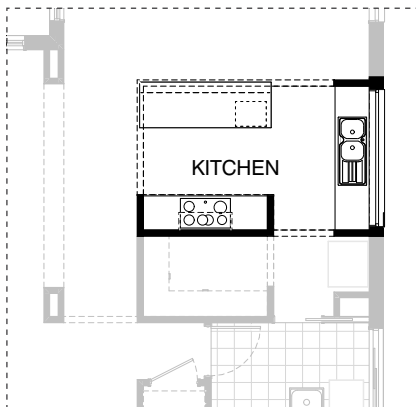
**K01**



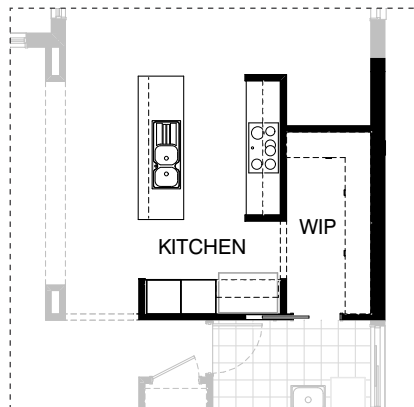
**K02**



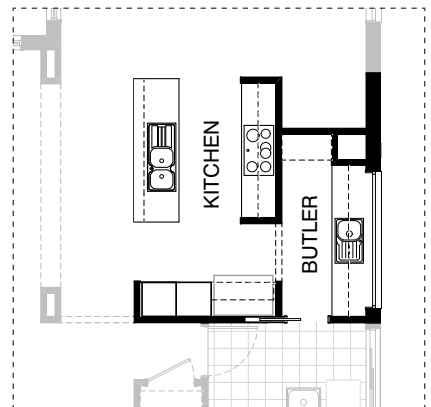
**K03**



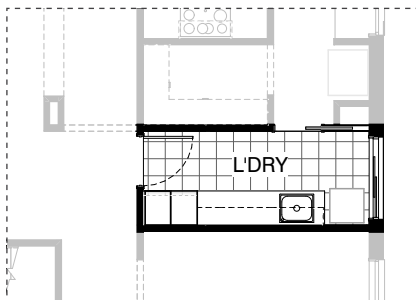
**K04**



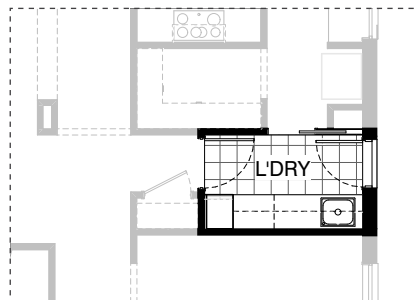
**K05**



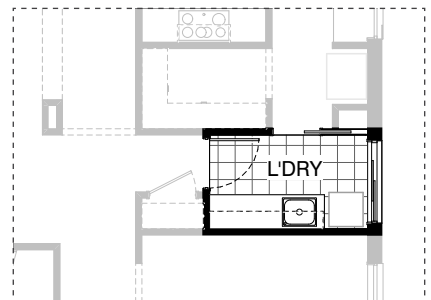
**K06**



**L01**



**L02**



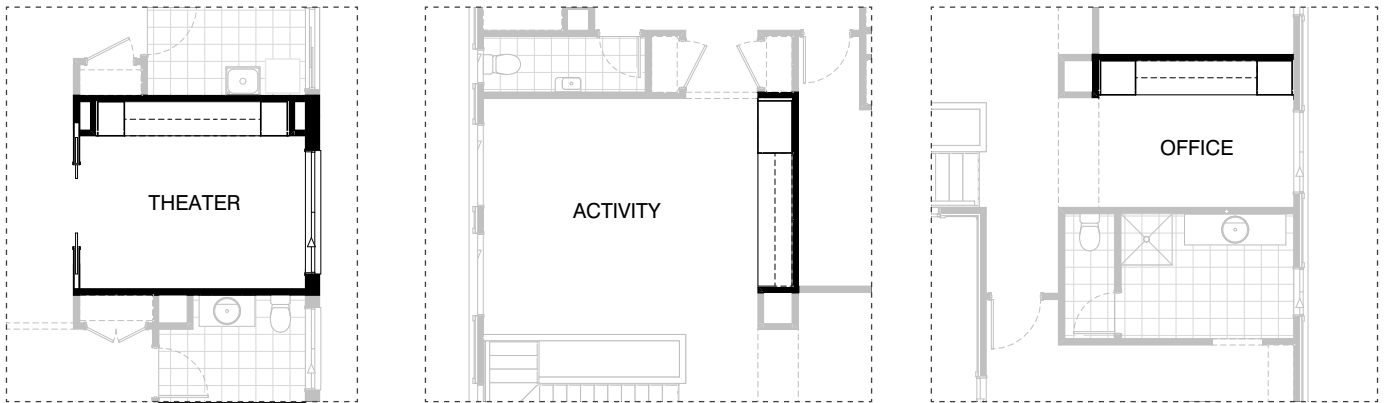
**L03**



**EX01**

**IN01**

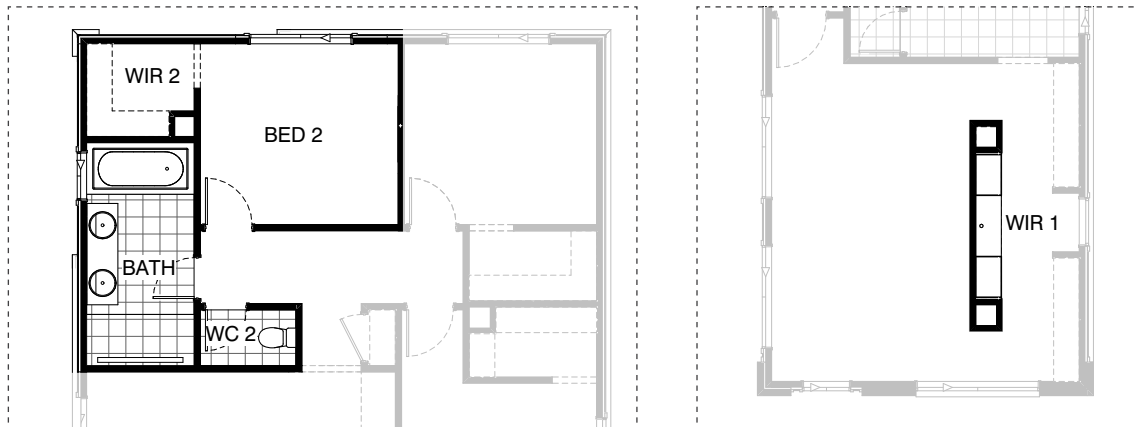
**IN02**



**IN03**

**IN04**

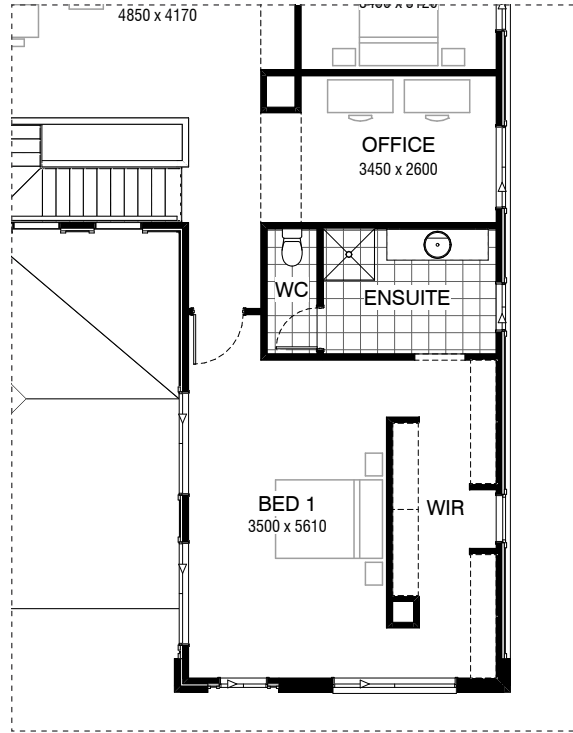
**IN05**



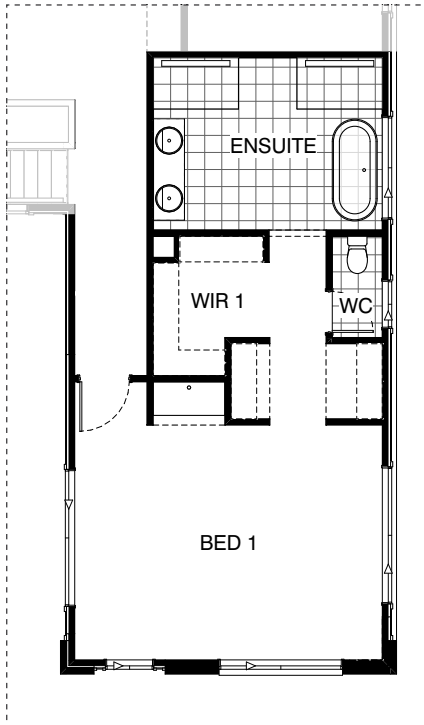
**IN06**

**IN07**

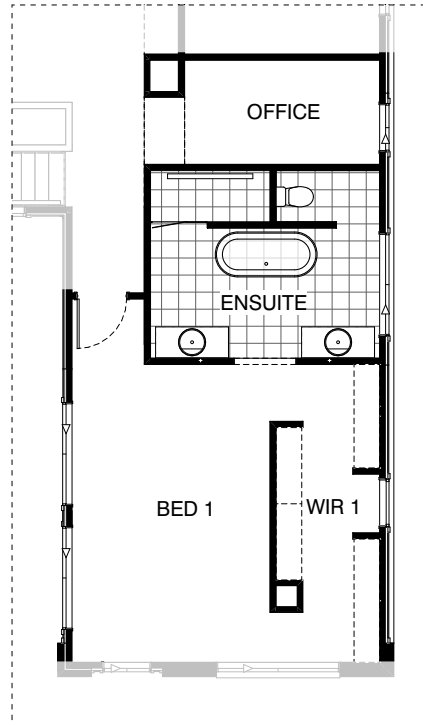
\*Copyright conditions. All photos and illustrations are representative only. Floor plans and specifications may be varied by Burbank without notice, the dimensions are diagrammatic only and a Building Contract with final drawings will display correct dimensions and detail. All designs are the property of Burbank and must not be used, reproduced, copied or varied, wholly or in part without written permission from an authorised Burbank representative. Copyright Burbank Australia (QLD) Pty Ltd. ABN 77 103 014 615. QBCC 1046544.



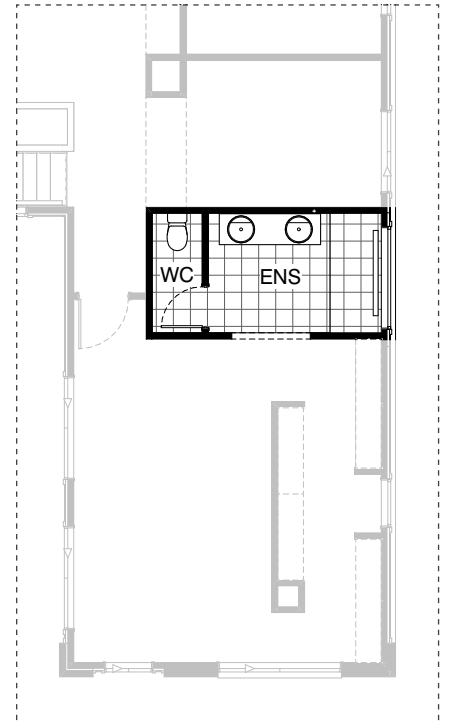
Master Ensuite



IN08



EN01



EN02

**OPTION DESCRIPTIONS****K01 - Kitchen Option 01**

Provide Kitchen upgrade option which adds 2No. 600mm overhead cupboards and 1No. 900mm open shelf above Ref. space. Island bench and sink bench unchanged.

**K02 - Kitchen Option 02**

Provide Butler's Pantry upgrade option which adds 2No. 600mm overhead cupboards and 1No. 900mm open shelf above Ref space, 2No. 800mm base cupboards, 1No. single bowl sink with drainer, additional tiled splashback and benchtop to suit. This option decreases the Family by 120mm in width and increases the void space near the fridge by 120mm.

**K03 - Kitchen Option 03**

Provide L-shaped Kitchen upgrade option which adds 2No. 600mm overhead cupboards and 1No. 900mm open shelf above Ref space. L-shaped bench includes 1No. 450mm drawer unit, 1No. 450mm base cupboard, 1No. 900mm base cupboard, 1No. dishwasher provision, 1No. microwave provision with pot drawer, 1No. 900mm corner base cupboard, 2No. 700mm base cupboards with additional benchtop and tiled splashback to suit. Option also provides 1200mm x 1810mm Aluminium fixed window in lieu of standard.

**K04 - Kitchen Option 04**

Provide Kitchen bulkhead and timber ceiling upgrade option.

Option Kitchen04 only available with Standard Kitchen, Option Kitchen01 and Option Kitchen03.

**K05 - Kitchen Option 05**

Provide Kitchen upgrade option with rearranged layout including 2No. 700mm base cupboards, 1No. 900mm base cupboard, 2No. 700mm overhead cupboards with additional benchtop and tiled splashback to suit. 1No. 1000mm open shelf above Ref space and 2No. oven towers with 600mm ovens and microwave provisions. Island bench includes 1No. 450mm drawer unit, 1No. dishwasher provision, 1No. 900mm base cupboard and 1No. 450mm base cupboard. Option also provides a study nook area, decreases the Family by 50mm in width and deletes existing window to Kitchen.

**K06 - Kitchen Option 06**

Provide Kitchen upgrade option with rearranged layout including 2No. 700mm base cupboards, 1No. 900mm base cupboard, 2No. 700mm overhead cupboards with additional benchtop and tiled splashback to suit. 1No. 1000mm open shelf above Ref space and 2No. oven towers with 600mm ovens and microwave provisions. Island bench includes 1No. 450mm drawer unit, 1No. dishwasher provision, 1No. 900mm base cupboard and 1No. 450mm base cupboard. Butlers Pantry includes 2No. 900mm base cupboards, 1No. 800mm base cupboard, 2No. 900mm overhead cupboards, 1No. 800mm overhead cupboard, 1No. single bowl sink with drainer, additional tiled splashback and benchtop to suit. Option also provides a study nook area, 514mm x 2410mm Aluminium fixed window in lieu of standard, decreases the Family by 50mm in width and deletes cavity sliding door to WIP / Laundry.

**L01 - Laundry Option 01**

Provide Laundry upgrade option including laminate cupboards and stainless steel inset trough including 2No. 900mm base cupboards, 1No. 400mm base cupboard, 2No. 900mm overhead cupboards, 1No. 400mm overhead cupboard, 1No. 450mm full height laminate Linen cupboard, 1No. 450mm full height laminate Broom cupboard, additional benchtop and tiled splashback to suit. Extend Laundry by deleting Linen Cupboard from Passage.

**L02 - Laundry Option 02**

Provide Laundry upgrade option including laminate cupboards and stainless steel inset trough including 1No. 800mm base cupboard, 2No. 800mm overhead cupboards, 1No. 600mm overhead cupboard, 1No. 450mm full height laminate Broom cupboard, additional benchtop and tiled splashback to suit. Option also provides 2105mm x 850mm aluminium external door frame with standard external door in lieu of 2110mm x 1450mm aluminium sliding door.

**L03 - Laundry Option 03**

Provide Laundry upgrade option including laminate cupboards and stainless steel inset trough including 2No. 800mm base cupboards, 2No. 800mm overhead cupboards, 1No. 350mm base cupboard, 1No. 350mm overhead cupboard, additional benchtop and tiled splashback to suit.

**EX01 - External 01**

Provide mirrored Family and Alfresco option. This option changes the shape of the Alfresco and provides 2No. Voids with bulkhead over.

**IN01 - Internal Option 01**

Provide built-in joinery upgrade option to Family with 450mm deep 32mm laminate benchtop, 1No. 1000mm TV cabinet cupboard and 4No. 900mm T.V cabinet cupboards. Delete standard Family 514mm x 2410mm Aluminium sliding window.

Note: Option Internal01 only available with Option Kitchen03

**IN02 - Internal Option 02**

Provide Guest Bed option with 2-way Pdr / Ensuite in lieu of Living. Option includes 870mm hinged door in lieu of bulkhead opening and built-in WIR with bulkhead opening. Rearrange Pdr to accommodate additional 900mm x 900mm tiled shower base, double stud wall and 720mm cavity sliding door to Pdr / Ensuite. Coats to Entry passage to be deleted. Provide 1027mm x 850mm Aluminium sliding window in lieu of standard

**IN03 - Internal Option 03**

Provide built-in joinery upgrade option to Theatre with 600mm deep 32mm laminate benchtop including 3No. 800mm T.V cabinet cupboards, 3No. 800mm overhead cupboards and 2No. 450mm full height laminate Store cupboards. This option also provides 2No. 720mm wide cavity sliding doors in lieu of bulkhead opening and moves existing window to accommodate.

**IN04 - Internal Option 04**

Provide built-in joinery upgrade option to Activity with 600mm deep 32mm laminate benchtop including 1No. 700mm T.V cabinet cupboard, 2No. 800mm T.V cabinet cupboards, 2No. full-width 300mm deep open shelves above and 1No. 900mm full height laminate Store cupboard.

**IN05 - Internal Option 05**

Provide built-in joinery upgrade option to Office with 600mm deep 32mm laminate benchtop including 2No. full-width 300mm deep open shelves above and 2No. 600mm full height laminate Store cupboards.

**IN06 - Internal Option 06**

Provide Bathroom upgrade option with rearranged layout including 900mm x 1890mm wall to wall tiled shower base with grate drain in lieu of standard, 1No. 1782mm wide vanity unit with 2No. basins in lieu of standard and 1200mm x 850mm Aluminium sliding window in lieu of standard. This option deletes a Linen cupboard from the Passage, wall vanity and window to the Powder.

**IN07 - Internal Option 07**

Provide built-in joinery upgrade option to WIR 1 with 450mm deep 32mm laminate benchtop and 2No. Full height laminate 700mm wide 450mm deep cupboards with 3No. drawer units.

**IN08 - Internal Option 08**

Provide Master suite upgrade option by relocating Ensuite to Office location and WIR to Ensuite location. Provide dressing area with laminated bench, additional hanging space with 2 nooks, wc relocation, 1780mm freestanding bath to Ensuite, 2No. 900mm x 1500mm tiled shower bases with grate drain and 1No. 1782mm wide vanity unit with 2No. basins. Option also provides 2No. 514mm x 2410mm Aluminium sliding window to Bed 1, 1800mm x 850mm Aluminium sliding window to WC and 1200mm x 1810mm Aluminium sliding window to Ensuite.

**EN01 - Ensuite Option 01**

Provide Ensuite upgrade option by increasing Ensuite in width by 1100mm. Reduce WIR and Bed 1 by 350mm and Office by 750mm. Provide 900mm x 2100mm wall to wall tiled shower base with grate drain in lieu of standard, 2No. 1282mm wide vanity units in lieu of standard and additional 1780mm freestanding bath. Option also provides 2057mm x 850mm Aluminium sliding window in lieu of standard to Office and 1200mm x 1810mm Aluminium sliding window in lieu of standard to Ensuite. 514mm x 1810mm Aluminium sliding window moves as shown.

**EN02 - Ensuite Option 02**

Provide Ensuite upgrade option with rearranged layout including Reduce Ensuite/WC length by 100mm increasing Bed1/WIR. Provide 2100mm x 900mm wall to wall tiled shower base with grate drain in lieu of standard. 1No. 1782mm wide vanity unit with 2No. basins in lieu of standard and 350mm x 1810mm Aluminium fixed window in lieu of standard.