

VIEWCREST 249

4 3 2

Total squares 26.9sq

B
SERIES

Minimum
Lot Width
12.5m

Minimum
Lot Length
25.0m



Design Dimensions
11,030mm(W) x 17,750mm(L).

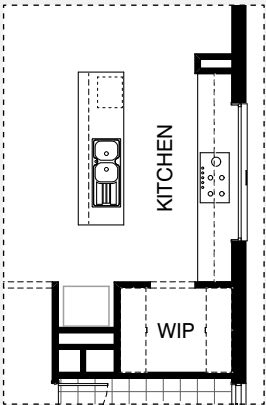
Facade Choices
Fullerton, Huntington, Moorpark,
Oakwood, Palisades, Redlands, Riverside.
Details based on Riverside façade floorplan (Illustrated)

DESIGN DIMENSIONS		
Residence	208.9m ²	22.5sq
Garage	38.6m ²	4.2sq
Porch	2.3m ²	0.2sq
Total	249.8m²	26.9sq

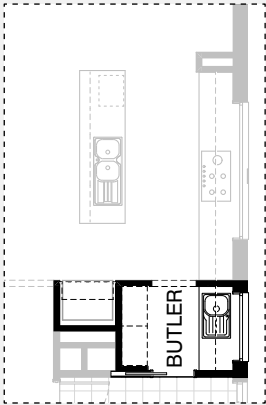
Burbank 

*Copyright conditions. All photos and illustrations are representative only. Floor plans and specifications may be varied by Burbank without notice, the dimensions are diagrammatic only and a Building Contract with final drawings will display correct dimensions and detail. All designs are the property of Burbank and must not be used, reproduced, copied or varied, wholly or in part without written permission from an authorised Burbank representative. Copyright Burbank Australia Pty Ltd. ABN 91 007 099 872. Builders Registration Number CDB-U-52603.

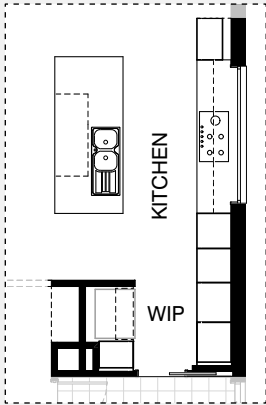
KITCHEN OPTIONS



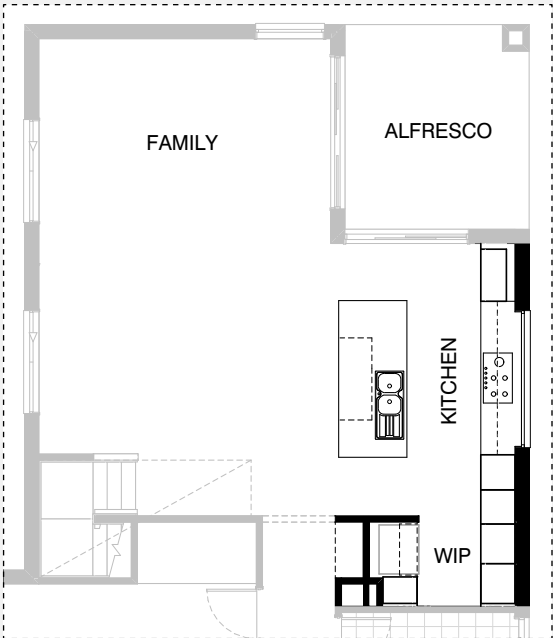
Master Kitchen Design



K01

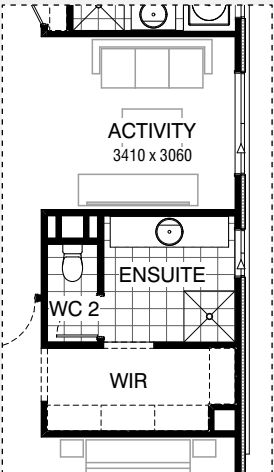


K02

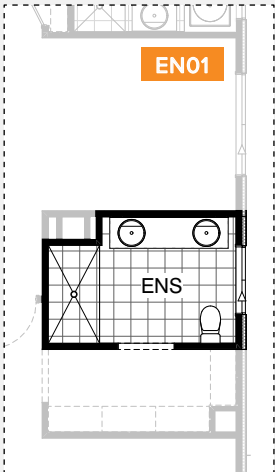


K03

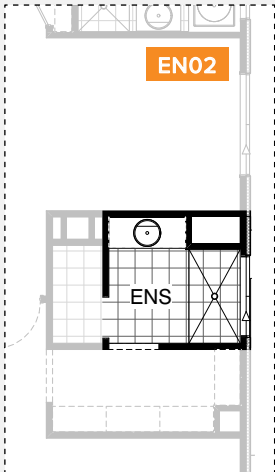
ENSUITE OPTIONS



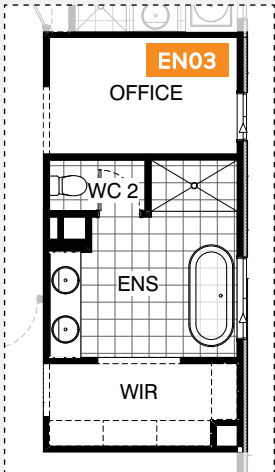
Master Ensuite Design



EN01



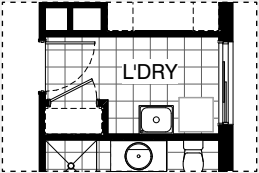
EN02



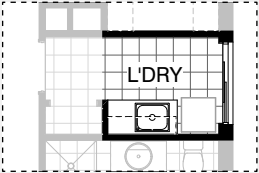
EN03



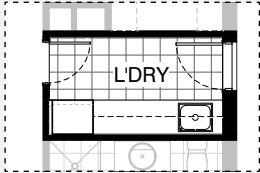
LAUNDRY OPTIONS



Master Laundry Design

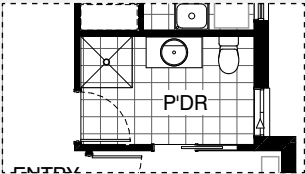


LD01

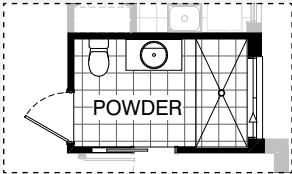


LD02

INTERNAL OPTIONS



Master Powder Design

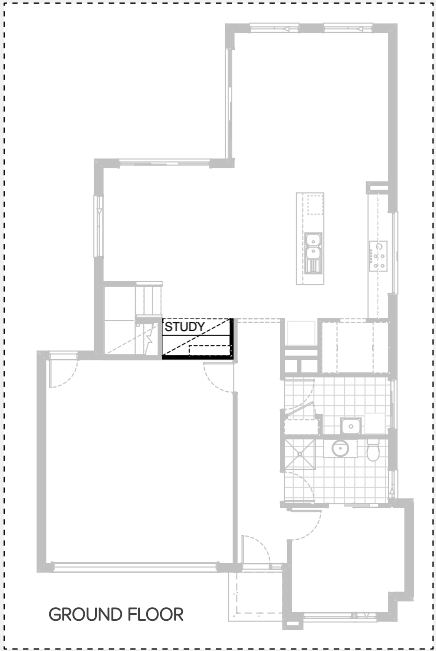


IN01

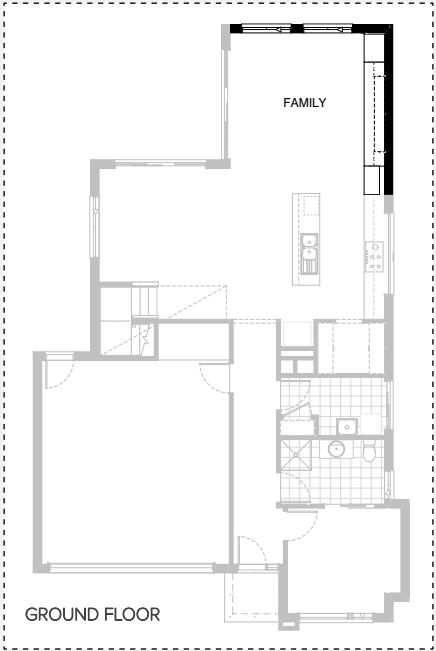


IN02

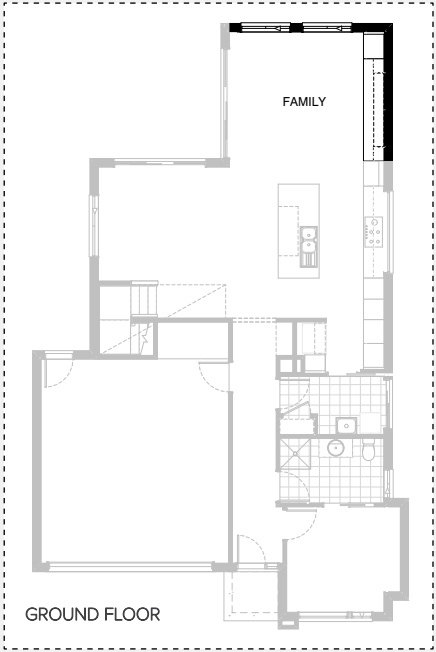
INTERNAL OPTIONS



IN03

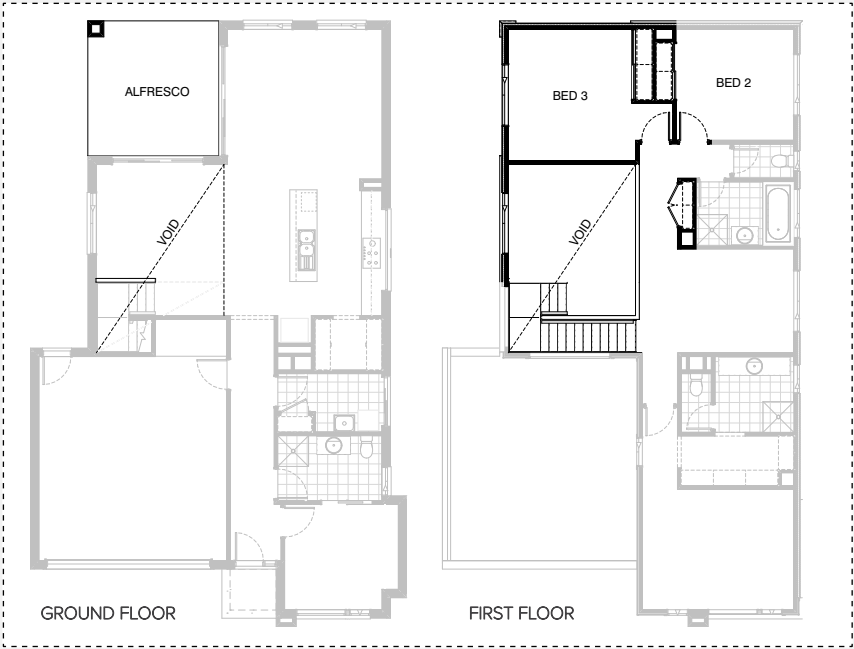


IN04

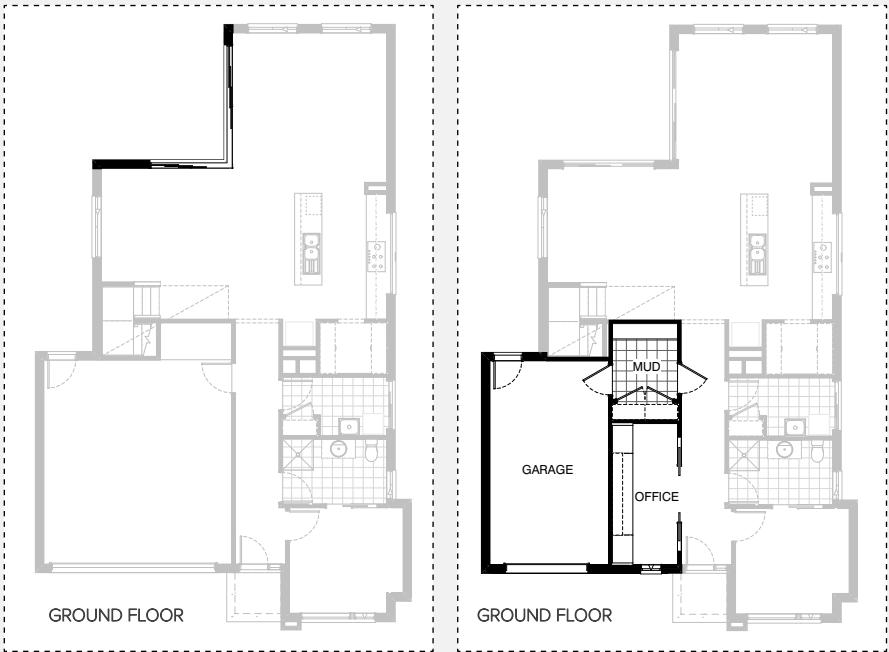


IN05

INTERNAL OPTIONS



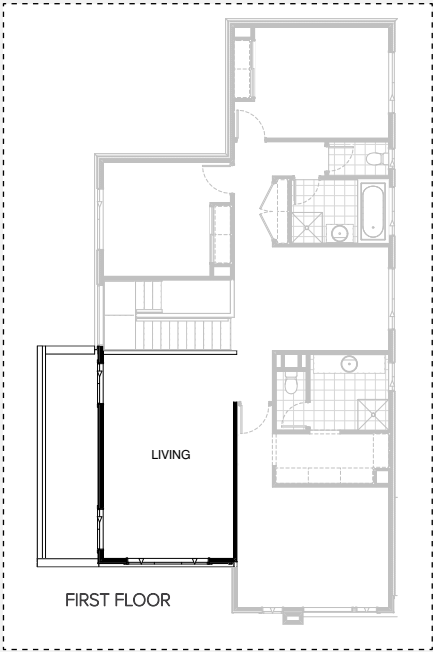
IN06



IN07

IN08

INTERNAL OPTIONS

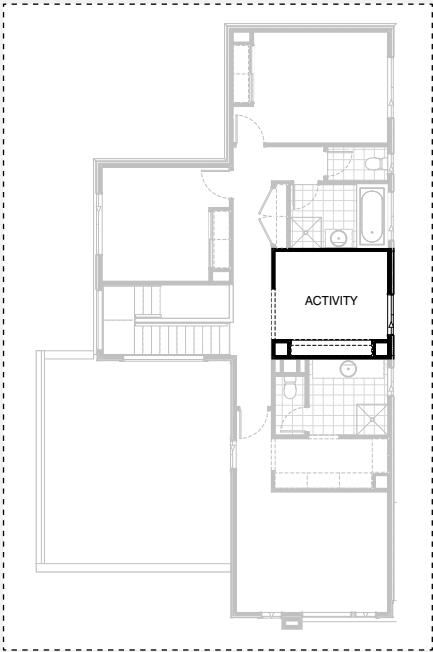


IN09

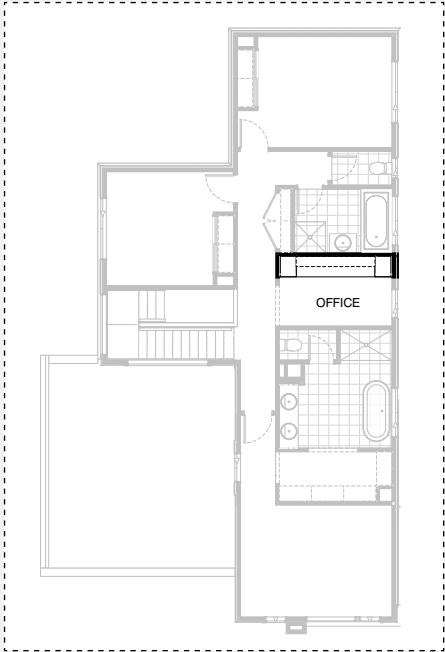


IN11

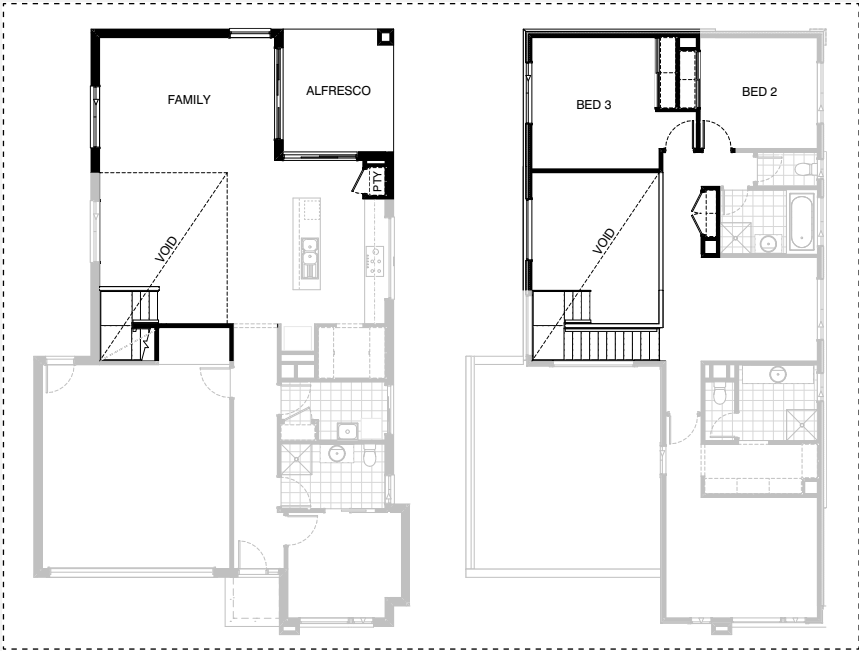
INTERNAL OPTIONS



IN12

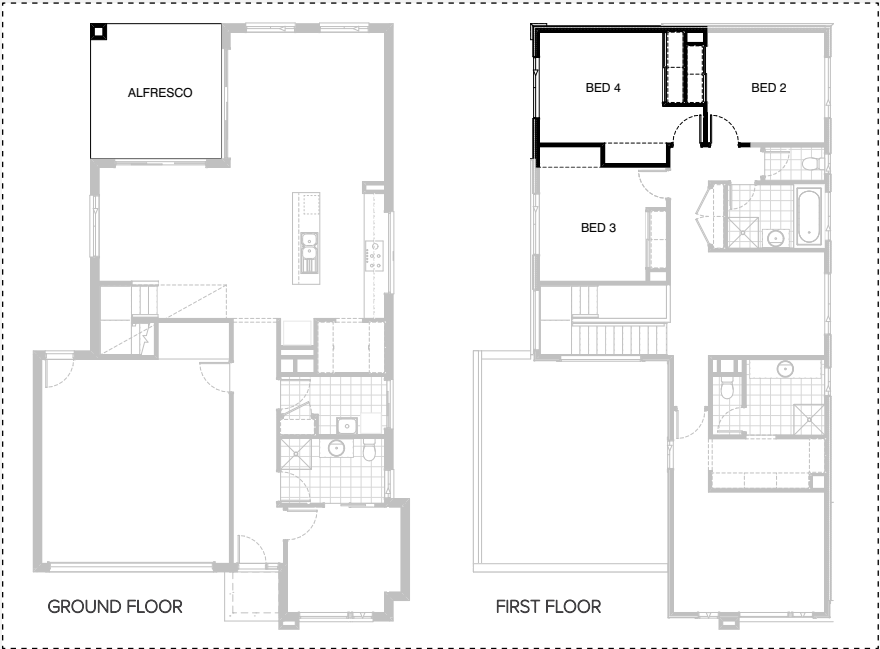


IN13



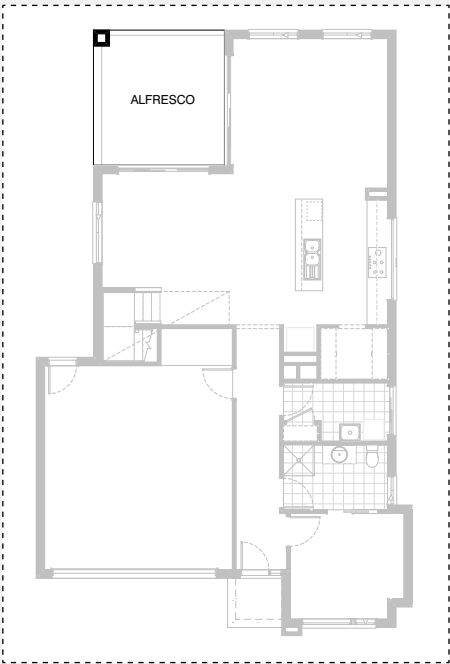
IN14

INTERNAL OPTIONS



IN15

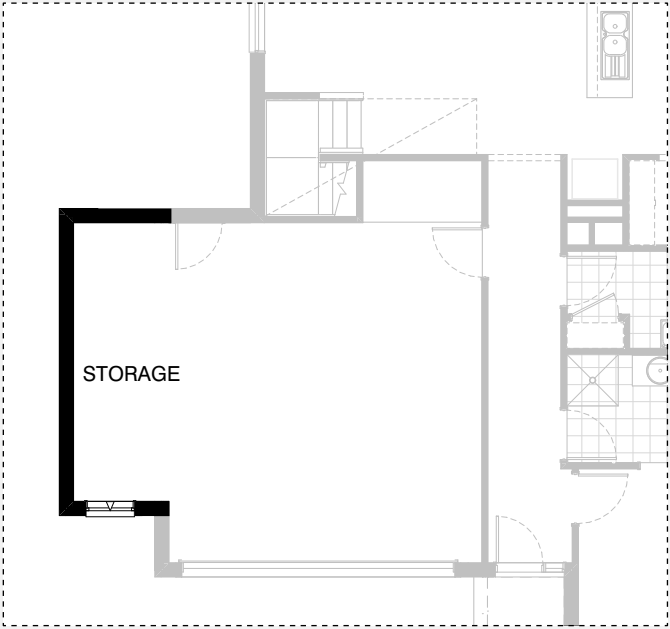
EXTERNAL OPTION



EX01



GARAGE OPTIONS



G01

VIEWCREST 249

OPTION DESCRIPTIONS

Kitchen Option 01

Provide Butler's Pantry in-lieu of Walk-in Pantry, including:
20mm stone benchtop, single bowl sink, 1No. 900mm base cupboard, 1No. 450mm base cupboard, 1No. 900mm overhead cupboard, 1No. 450mm overhead cupboard, 1No. Open shelf over Ref space, 1No. 720mm cavity sliding door through to Laundry with additional 514mm x 1210mm Aluminium fixed window.

Kitchen Option 02

Provide Kitchen upgrade option with 1200mm deep island bench and relocated Ref space, including:
1No. 900mm retractable rangehood above, 1No. 450mm drawer unit, 1No. dishwasher provision, 4No. 900mm base cupboards, 1No. 700mm base cupboard, 2No. 600mm base cupboards facing Meals, 2No. 900mm overhead cupboards, 2No. 600mm oven towers with microwave provisions, 1No. open shelf over Ref space, 2No. 700mm full height laminate cupboards, 1No. 700mm full height laminate cupboard (450mm deep), 1No. 450mm full height laminate cupboard beside Ref space, 1No. 820mm cavity sliding door through to Laundry. Provide Alcove facing Passage with bulkhead over.

Kitchen Option 03

Provide Kitchen upgrade option with 1200mm deep island bench and relocated Ref space, including:
1No. 900mm retractable rangehood above, 1No. 450mm drawer unit, 1No. dishwasher provision, 4No. 900mm base cupboards, 1No. 700mm base cupboard, 2No. 600mm base cupboards facing Meals, 2No. 900mm overhead cupboards, 2No. 600mm oven towers with microwave provisions, 1No. open shelf over Ref space, 2No. 700mm full height laminate cupboards, 1No. 900mm full height laminate cupboard (434mm deep), 1No. 450mm full height laminate cupboard beside Ref space,
Note: Pantry and void to be deleted Option only available with Internal11 or Internal14.

Ensuite Option 01

Provide First Floor Ensuite upgrade option with re-arranged layout, including:
1No. 2082mm vanity with double basins, 1720mm x 900mm wall-to-wall tiled shower base, 1No. 1027mm x 1210mm Aluminium Sliding Window in-lieu of standard, Relocated WC.

Ensuite Option 02

Provide First Floor Ensuite upgrade option, including:
1No. 1282mm vanity, including 1 row tiling beneath mirror to suit wall-to-wall benchtop including returns
1650mm x 900mm wall-to-wall tiled shower base,
1No. 350mm x 1450mm Aluminium Sliding Window over shower in-lieu of standard.

Ensuite Option 03

Provide First Floor Ensuite upgrade option with rearranged layout, including:
1No. 1782mm vanity with with double basins, including 1 row tiling beneath mirror to suit wall-to-wall benchtop including returns, 1510mm x 900mm wall-to-wall tiled shower base, 1No. 1780mm freestanding bath, 1No. 1200mm x 1450mm Aluminium sliding window in-lieu of standard, Enclosed WC with 720mm hinged door.
Note: Option provides a Home Office in-lieu of Activity with 1800mm x 850mm Aluminium sliding window and bulkhead as shown Bed 1 reduces by 250mm to accommodate.

Laundry Option 01

Provide Laundry upgrade with laminate base and overhead cupboards and stainless steel inset trough, including:
1No. 800mm base cupboard, 1No. 350mm base cupboard, 1No. 800mm overhead cupboard, 1No. 350mm overhead cupboard, 32mm laminate benchtop and tiled splashback to suit.

Laundry Option 02

Provide Laundry upgrade with laminate base and overhead cupboards and stainless steel inset trough, including:
1No. 900mm base cupboard, 2No. 900mm overhead cupboards, 1No. 450mm overhead cupboard, 1No. 700mm full height laminate cupboard with 5No. 450mm shelves, 32mm laminate benchtop and tiled splashback to suit. Bench height increases to 950mm from FFL with open space beneath benchtop to store washer and dryer side-by-side. Provide 820mm hinged entry door in-lieu of standard sliding door. Remove plaster-lined Linen cupboard.

Internal Option 01

Provide upgrade option to Guest Ens/Pdr, including:
swapped location of shower and WC, 1900mm x 900mm tiled shower base with 350mm x 1450mm Aluminium sliding window over in-lieu of standard.
Note: Hinged door flipped to swing out so WC complies with NCC requirements. Cavity sliding door also flips.

Internal Option 02

Provide Lounge to the front of the home in-lieu of Guest bedroom and remove hinged door. Provide 2057mm x 1210mm Aluminium fixed window to Lounge as shown. Remove shower and cavity sliding door from Powder and provide 782mm vanity in-lieu of standard. Provide 1027mm x 610mm Aluminium sliding window in-lieu of standard. Provide Coats cupboard to Entry passage with 820mm hinged door and 450mm shelf with hanging rail.
Note: Bathroom on the first floor to be updated in line with NCC requirements. Shower to have recessed tiled base and hinged door to be 870mm.

Internal Option 03

Provide Study Nook facing the Meals in-lieu of Storage area to Garage, with built-in joinery, including:
600mm deep 32mm thick laminate benchtop desk, 1No. 450mm wide drawer unit under desk, 2No. 300mm deep 60mm thick open shelves over desk.

Internal Option 04

Provide built-in joinery option to Family, including:
600mm deep 32mm thick benchtop, 2No. 800mm T.V units, 2No. 700mm T.V units, 1No. 800mm (450mm deep) full height laminate cupboard, 1No. 800mm full height laminate cupboard, 2No. 400mm open shelf units, 2No. 300mm deep 60mm thick open shelves over.
Note: Remove stud and plaster-lined plumbing stack. Provide new plumbing stack behind 450mm deep laminate cupboard. Family windows spaced to suit floor plan option

Internal Option 05

Provide built-in joinery option to Family, including:
600mm deep 32mm thick benchtop, 2No. 800mm T.V units, 2No. 700mm T.V units, 1No. 700mm full height laminate cupboard, 2No. 400mm open shelf units, 2No. 300mm deep 60mm thick open shelves over.
Note: Option only available with Option Kitchen02 Family windows spaced to suit floor plan option.

Internal Option 06

Provide double-height Void over Meals area relocating Bed 3 above and providing Alfresco with brick pier and structural concrete slab to ground floor. Provide an extension to the dwarf wall balustrade as shown. Relocate heating stack to Linen closet with 2No. 620 hinged doors in-lieu of standard. Provide 1200mm x 1810mm Aluminium fixed window in-lieu of standard to new Void.

Internal Option 07

Provide 2107mm-3610mm x 2410mm Aluminium corner stacker sliding door in-lieu of 2No. standard sliding doors.
Note: Include in pricing, 3No. 89mm x 89mm steel posts with steel beams to engineer's design.



VIEWCREST 249

OPTION DESCRIPTIONS

Internal Option 08

Provide Home Office/Mud room option with Single car Garage in-lieu of Double Garage, including:
Tiled Mud room with 870mm hinged door, 1No. built-in Linen cupboard with 2No. 820mm hinged doors and 4No. 450mm shelves 450mm deep 32mm thick benchtop 2No. 900mm T.V units under benchtop.
Home Office built-in joinery includes:
1No. 600mm deep 32mm thick laminate desk, 2No. 800mm full height laminate Storage cupboards, 2No. 300mm deep 60mm thick open shelves over desk, 2No. 820mm bi-parting cavity sliding doors, 1No. 2057mm x 610mm Aluminium awning feature window. Provide 1No. 2410mm wide Garage door to new single Garage in-lieu of standard

Internal Option 09

Provide Additional Living area to first floor by building over the Garage, including:
2No. 1200mm x 1210mm Aluminium sliding windows 1No. 1200mm x 2410mm Aluminium sliding window in-lieu of standard. Provide 1020(h) plaster-lined dwarf wall balustrade.
Note: Include in pricing, 3No. 89x89mm steel posts with steel beams to engineer's design.

Internal Option 11

Provide mirrored Family/Alfresco, including:
2110mm x 2690mm Aluminium sliding door in-lieu of standard 2110mm x 2170mm Aluminium sliding door, 1200mm x 1210 Aluminium fixed window in-lieu of 2No.1200mm x 1450mm Aluminium sliding windows, additional 1800mm x 1810mm Aluminium sliding window, Provide plaster-lined Pantry with 720mm hinged door and 4No. 450mm shelves, Provide additional brick pier with structural concrete slab to new Alfresco. Provide additional Bedroom to first floor, including: Additional built-in Robe with sliding doors and 450mm shelf with hanging rail, 1No. 1200mm x 1810mm Aluminium Sliding Window, 2No. Study Nooks to Bed 3 and 4 with bulkheads over.
Note: Option takes 490mm from Bed 2 to accommodate

Internal Option 12

Provide built-in joinery to Activity to first floor, including:
450mm deep 32mm thick benchtop, 2No. 800mm T.V units, 1No. 700mm T.V unit, 2No. 300mm deep 60mm thick open shelves over, 2No. plaster-lined voids with bulkhead over. Provide 2057mm x 1210mm Aluminium sliding window in-lieu of standard.

Internal Option 13

Provide built-in joinery to Home Office, including:
600mm deep 32mm thick desk top 2No. 450mm full height laminate cupboard, 2No. 300mm deep 60mm thick shelves over desk
Note: Option only available with option Ensuite03

Internal Option 14

Provide mirrored Family/Alfresco, including:
2110mm x 2690mm Aluminium sliding door in-lieu of standard 2110mm x 2170mm Aluminium sliding door, 1200mm x 1210mm Aluminium fixed window in-lieu of 2No. 1200mm x 1450mm Aluminium sliding windows, additional 1800mm x 1810mm Aluminium sliding window, Provide plaster-lined Pantry with 720mm hinged door and 4No. 450mm shelves, Provide additional brick pier with structural concrete slab to new Alfresco. Provide double-height Void over Meals area relocating Bed 3. Provide an extension to the dwarf wall balustrade
Note: Include in pricing, 3No. 89mm x 89mm steel posts with steel beams as designed by engineer.

Internal Option 15

Provide Alfresco with additional brick pier and structural concrete slab. Adds 15.21m² to the ground floor area of the home. Provide additional Bedroom to first floor, including: Additional built-in Robe with sliding doors and 450mm shelf with hanging rail, 1No.1200mm x 1810mm Aluminium Sliding Window, 2No. Study Nooks to Bed 3 and 4 with bulkheads over.
Note: Option takes 490mm from Bed 2 to accommodate

External Option 01

Provide Alfresco with additional brick pier, structural concrete slab and tiled roof over. Adds 15.21m² to the total floor area of the home.

Garage Option 01

Provide extension to Garage to create additional Storage area including additional 2057mm x 850mm. Aluminium awning feature window
Increases width of the home by 1680mm.
Increases area of the home by 9.07m²

