

Facades available:	
Coastal, Delta, Kingston, Nouveau	
Traditional, York	
Overall home width	12.11m
Overall home length	22.79m

Residence	189.6m ²	20.4sq
Garage	38.0m ²	4.1sq
Porch	3.0m ²	0.3sq
Alfresco	16.6m ²	1.8sq
Total	247.2m²	26.6sq

FLOORPLAN OPTIONS

We personalise our floorplans. Talk to us about our huge range of ready-to-go design options.

Listed details based on Traditional facade floorplan (illustrated)

*Copyright conditions. All photos and illustrations are representative only. Floor plans and specifications may be varied by Burbank without notice, the dimensions are diagrammatic only and a Building Contract with final drawings will display correct dimensions and detail. All designs are the property of Burbank and must not be used, reproduced, copied or varied, wholly or in part without written permission from an authorised Burbank representative. Copyright Burbank Australia (QLD) Pty Ltd. ABN 77 103 014 615. QBCC 1046544.

Call 13 BURBANK
Visit burbank.com.au



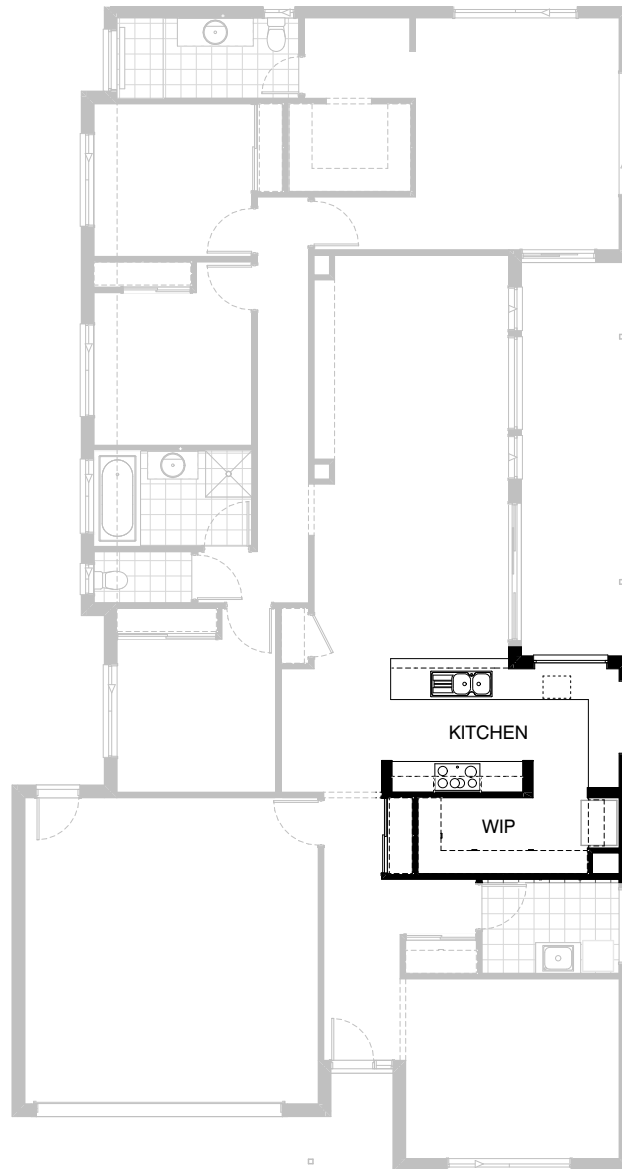
Option Kitchen01

Provide Kitchen upgrade option, including:
open shelf over Ref space,
2No. 800mm overhead cupboards,
1No. 450mm full height laminate cupboard
in lieu of plaster-lined void.



Option Kitchen02

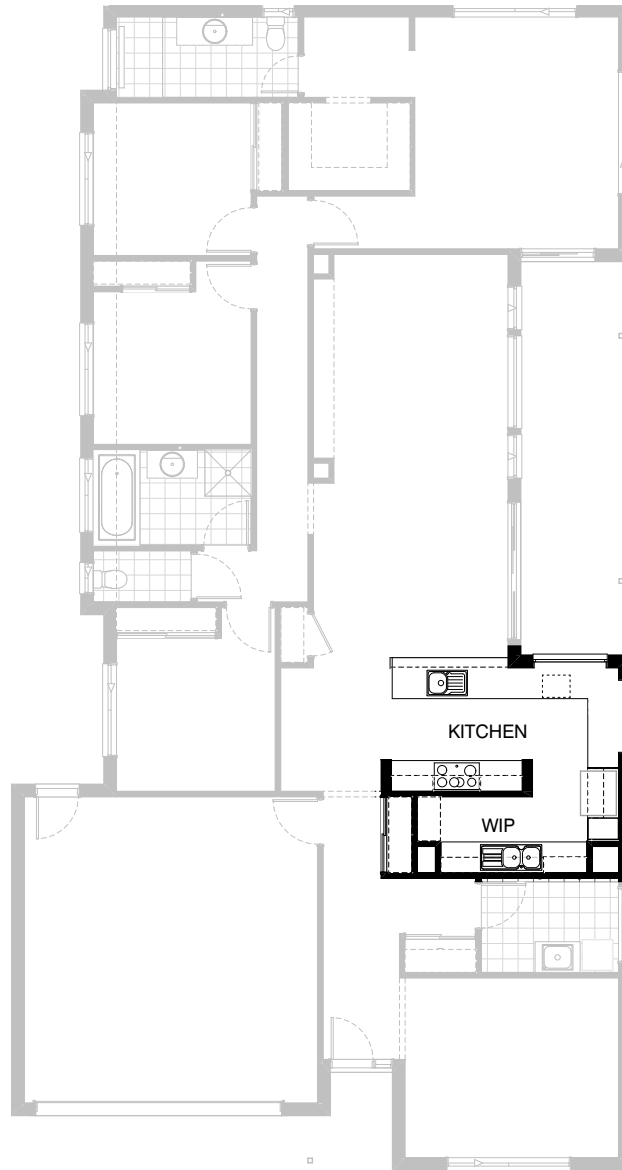
Provide Kitchen upgrade option with Butler's Pantry in lieu of Walk-in Pantry, including:
additional bench top and tiled splashback,
2No. 800mm base cupboards,
single bowl sink,
2No. 300mm deep 60mm thick open shelves.
Provide plaster-lined void to corner.
Remove 1No. run of 4 x 450mm shelving.
Bulkhead opening to Butler's adjusts to accommodate.



Option Kitchen03

Provide Kitchen upgrade option, including:
open shelf over Ref space,
2No. 800mm overhead cupboards.
Remove 720mm cavity sliding door to Laundry
and bulkhead opening to Walk-in Pantry.
Provide additional 4 x 450mm shelving as shown.

Remove 720mm cavity sliding door to Laundry
and bulkhead opening to Walk-in Pantry.



Option Kitchen04

Provide Kitchen upgrade option with rearranged layout and Butler's Pantry in lieu of Walk-in Pantry, including:

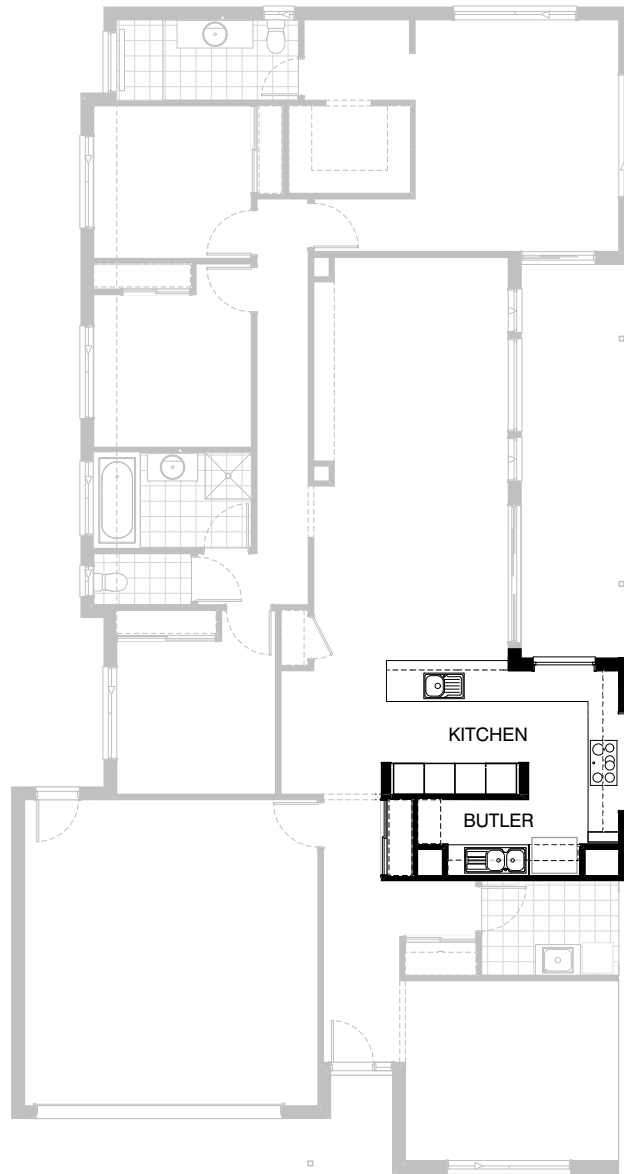
Kitchen:

- 900mm retractable rangehood,
- 900mm cook top,
- 900mm under bench oven,
- single bowl sink,
- 1No. 450mm drawer unit,
- 3No. 800mm base cupboards,
- 1No. 900mm corner base cupboard with bi-fold doors,
- 1No. 700mm base cupboard,
- 1No. 350mm base cupboard,
- 2No. 800mm overhead cupboards.

Butler's:

- additional bench top and tiled splashback,
- double bowl sink,
- laminated open shelf over Ref space,
- 2No. 800mm base cupboards,
- 1No. 800mm overhead cupboard,
- 1No. dishwasher provision,
- 1No. 450mm drawer unit,
- 1No. 400mm full height laminate Pantry cupboard,
- 1No. run of 4 x 450mm shelving,
- 2No. 300mm deep 60mm thick open shelving over sink,
- 2No. plaster-lined voids.

Remove 720mm cavity sliding door to Laundry and bulkhead opening to Walk-in Pantry.



Option Kitchen05

Provide Kitchen upgrade option with rearranged layout and Butler's Pantry in lieu of Walk-in Pantry, including:

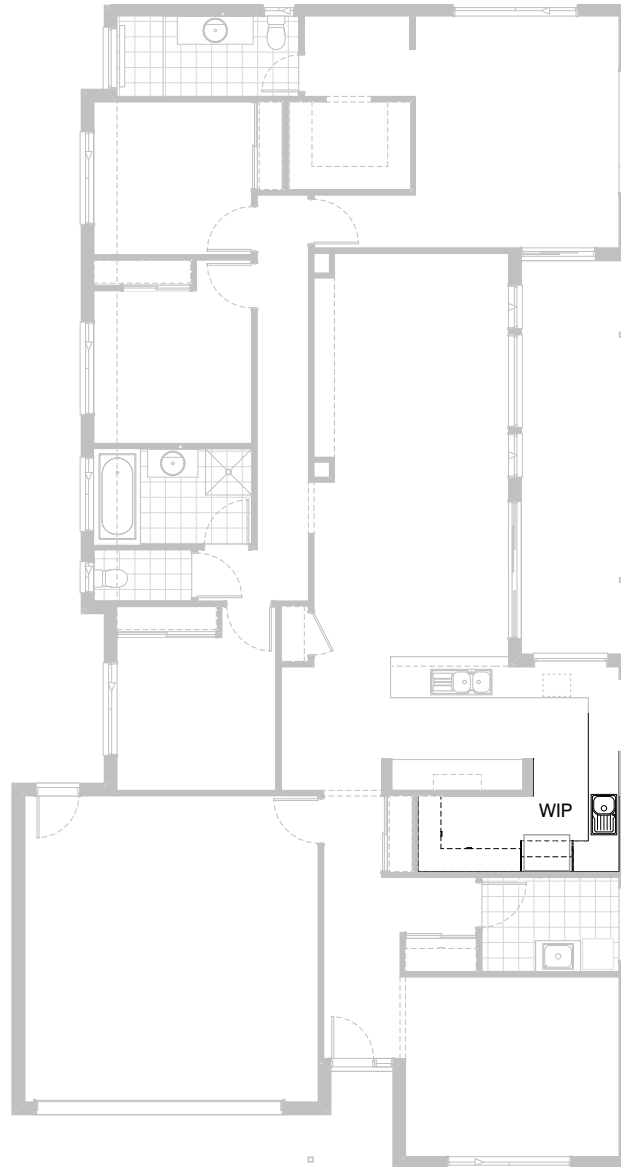
Kitchen:

- 900mm retractable rangehood,
- 900mm cook top,
- single bowl sink,
- 1No. 450mm drawer unit,
- 5No. 900mm base cupboards,
- 1No. 900mm corner base cupboard with bi-fold doors,
- 2No. 450mm base cupboards,
- 2No. 900mm overhead cupboards,
- 1No. 400mm overhead cupboard,
- 1No. 180mm full height laminate wine rack,
- 2No. 600mm laminate oven towers with microwave provisions,
- 2No. 600mm full height laminate Pantry cupboards.

Butler's:

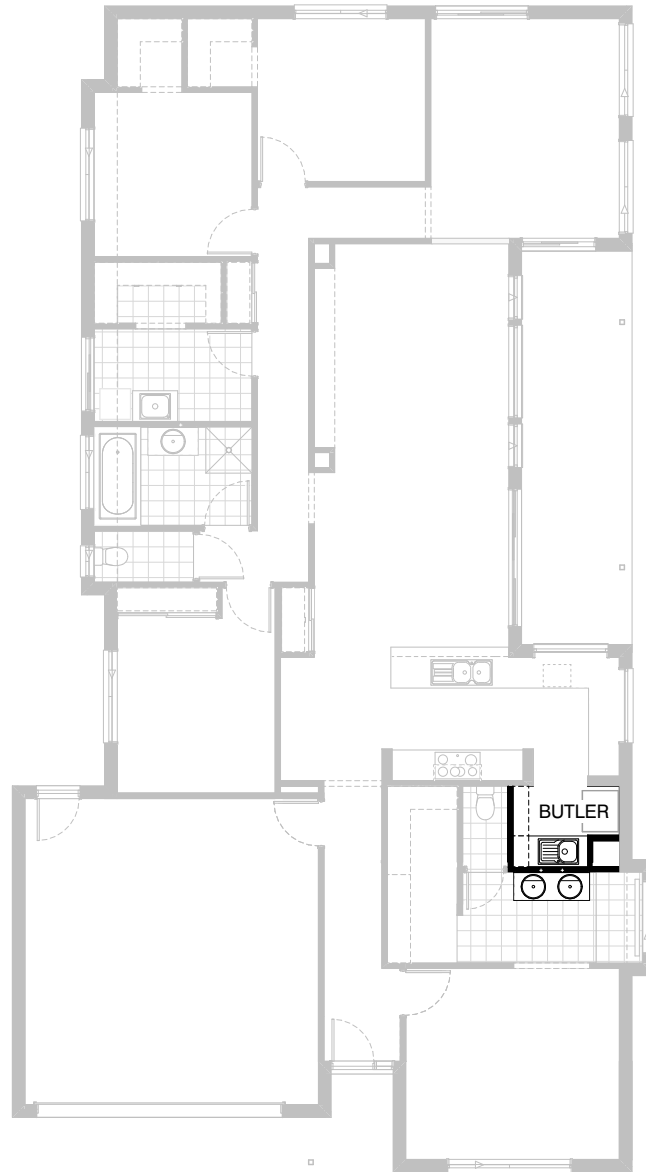
- additional bench top and tiled splashback,
- double bowl sink,
- relocated Ref space with laminate open shelf over,
- 1No. 900mm base cupboard,
- 1No. dishwasher provision,
- 1No. run of 4 x 450mm shelving,
- 2No. 300mm deep 60mm thick open shelving over sink,
- 2No. plaster-lined voids.

- Remove 720mm cavity sliding door to Laundry and bulkhead opening to Walk-in Pantry.
- Provide 1200mm x 1210mm and 514mm x 2410mm aluminium frame fixed windows with no bottom reveals in lieu of standard.



Option Kitchen06

Provide Kitchen upgrade option with additional Butler's Pantry, including:
additional bench top and tiled splashback,
single bowl sink,
relocated Ref space with laminate open shelf over,
1No. 900mm corner base cupboard with bi-fold doors,
1No. 800mm base cupboard,
2No. 700mm base cupboards.
Remove 1No. 900mm and 1No. 450mm base cupboards.
All other cabinetry to remain the same.
Remove 720mm cavity sliding door to Laundry and bulkhead opening to Walk-in Pantry.



Option Kitchen07

Provide Kitchen upgrade option with Butler's Pantry in lieu of Walk-in Pantry, including:
 additional laminate bench top and tiled splashback,
 single bowl sink,
 1No. 700mm base cupboard,
 1No. 350mm base cupboard,
 1No. 300mm laminate open shelf unit,

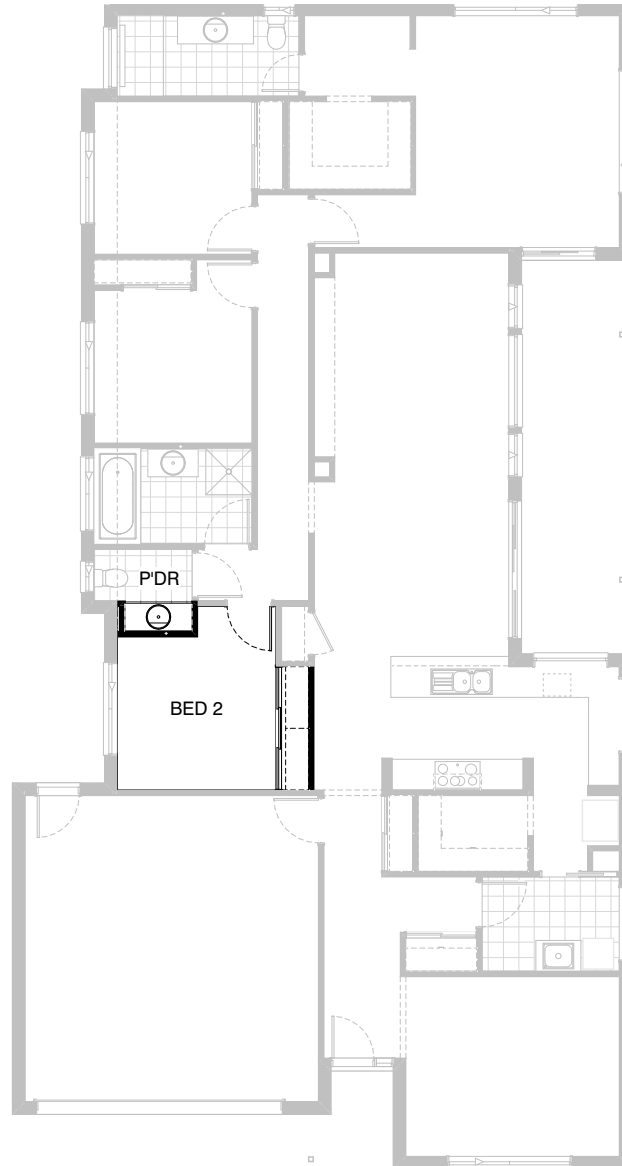
Note:
 Option only available with options External01 and Ensuite04.



Option External01

Provide floor plan option which moves Bed 1 to the front of the home as shown.

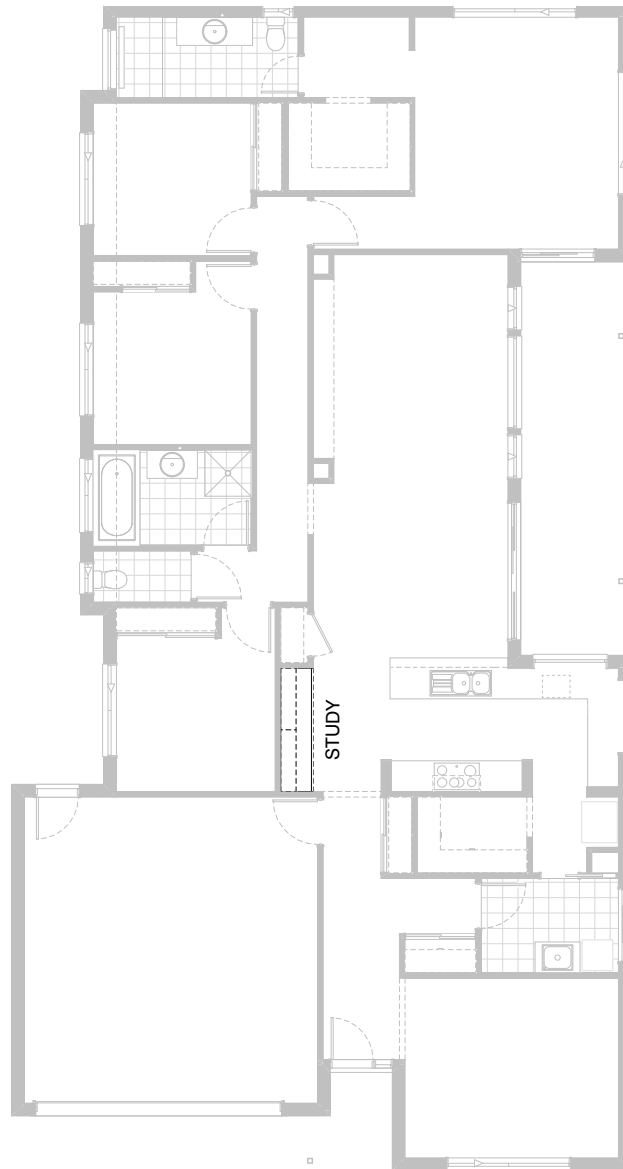
Note:
Option not available with Option Laundry01, Laundry02, Ensuite01, Ensuite02, Internal01, Internal02, Internal04.



Option Internal01

Provide floor plan option with
Powder room in lieu of standard WC, including:
1282mm vanity with single basin,
relocated built-in Robe with 450mm shelf and hanging rail.
Remove Study Nook to accommodate.

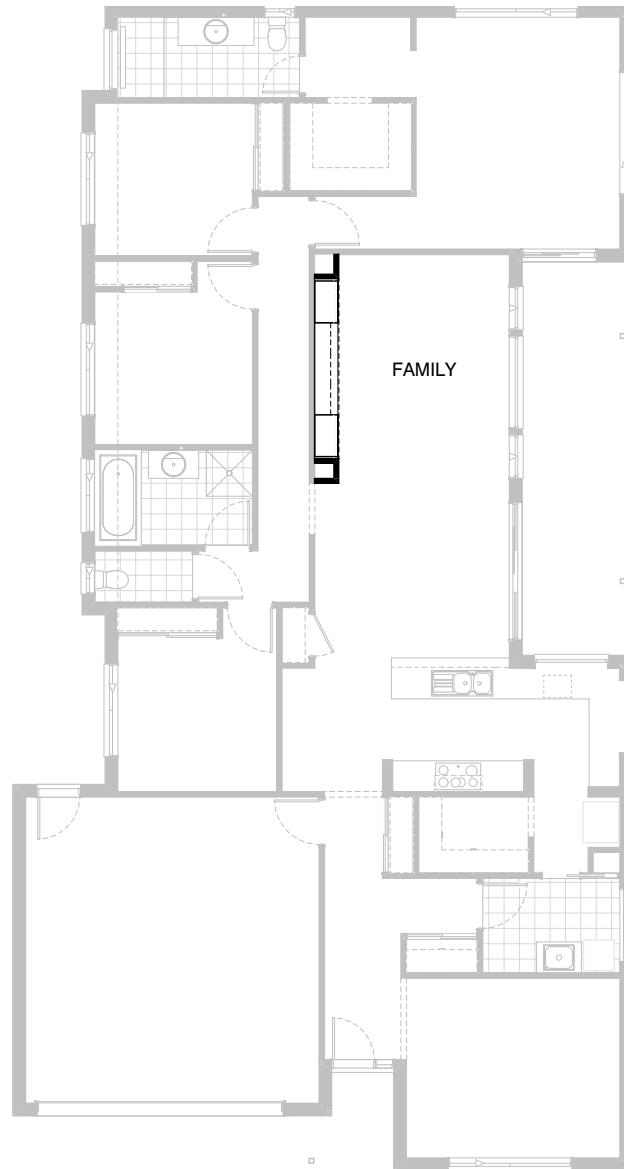
Note:
Option not available with Option External01, Internal02,
Internal05



Option Internal02

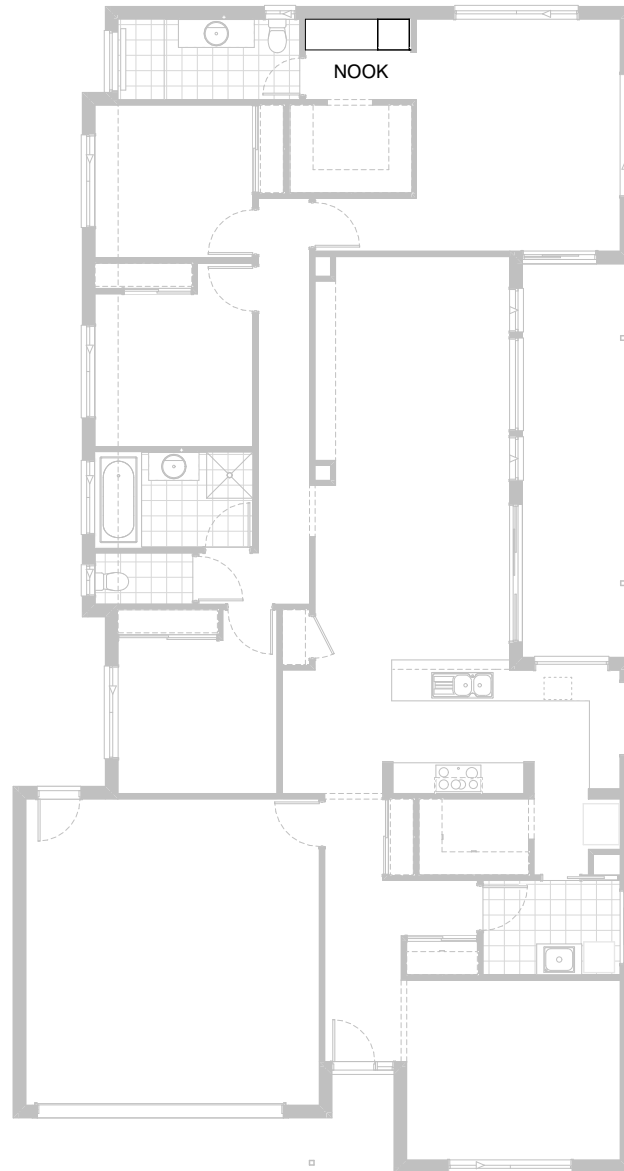
Provide built-in joinery option to Study Nook, including:
600mm deep 32mm thick laminate bench top,
1No. 450mm drawer unit under desk,
2No. 300mm deep 60mm thick open shelves over.
Provide bulkhead over as shown.

Note:
Option not available with option External01, Internal01,
Internal05



Option Internal03

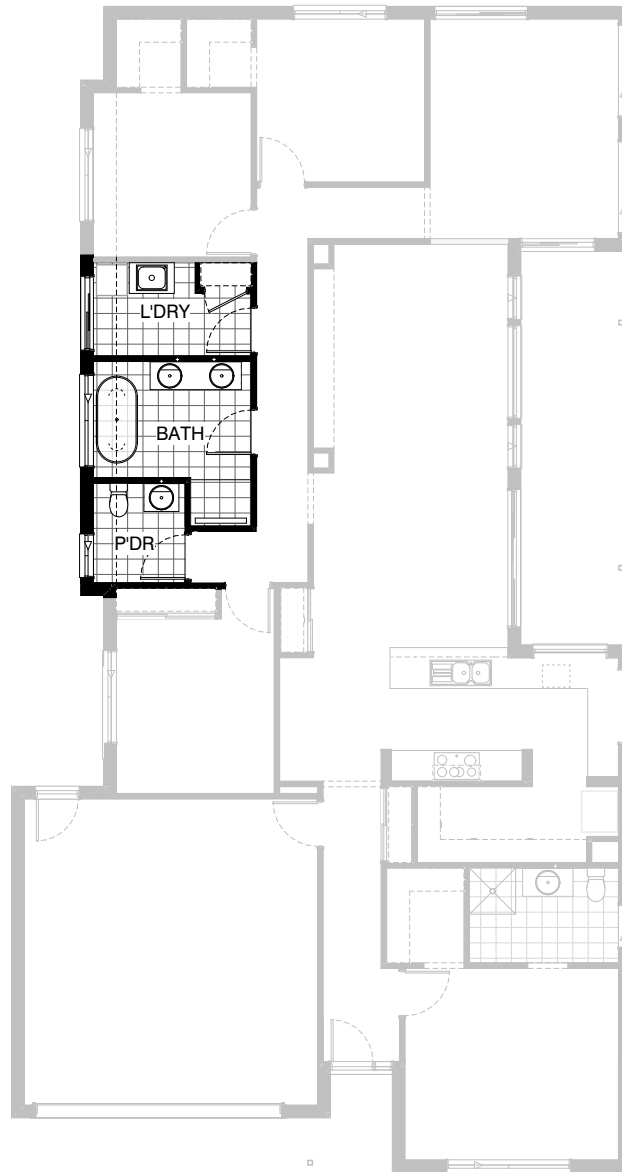
Provide built-in joinery to Family room, including:
450mm deep 32mm thick bench top,
3No. 600mm tv unit drawers,
3No. 600mm type 2 overhead cupboards with lift-up hinged doors,
2No. 800mm full height laminate cupboards.
Provide 108mm deep bulkhead over.
Increase depth of plaster-lined voids to 470mm to accommodate.



Option Internal04

Provide built-in joinery to Dresser Nook, including:
600mm deep 32mm thick laminate bench top,
1No. 600mm full height laminate Robe unit.

Note:
Option not available with Option External01.

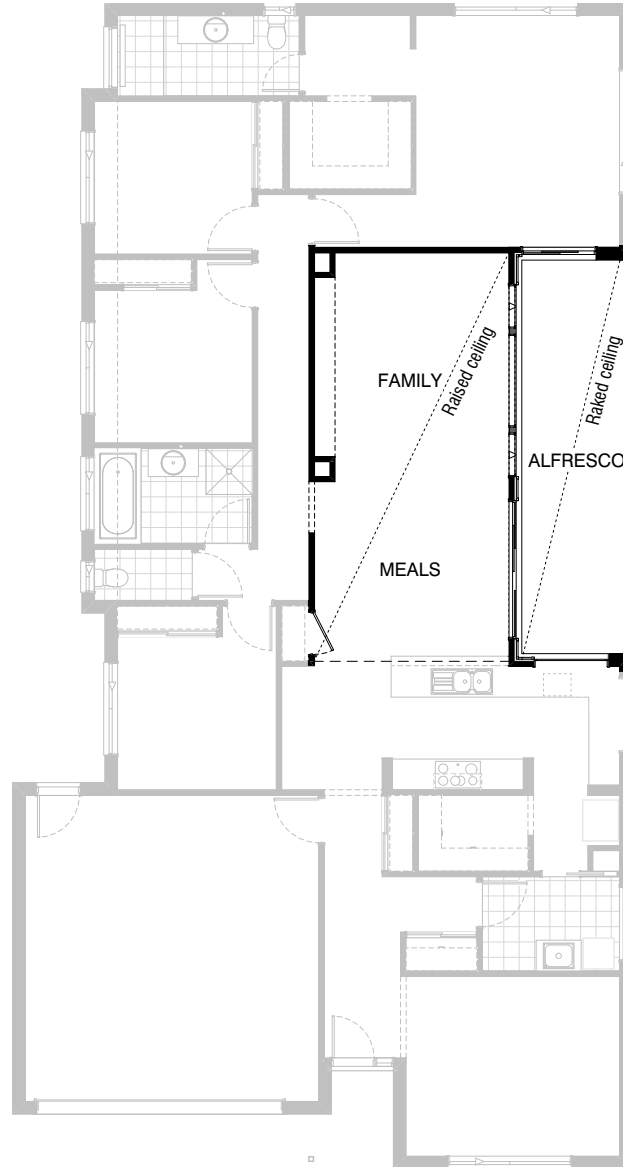


Option Internal05

Provide Bathroom upgrade option with Powder room in lieu of separate WC, including:
1782mm vanity with double basins,
1700mm freestanding bath,
1200mm x 900mm tiled shower base with grate drain,
1200mm x 1810mm aluminium frame sliding window in lieu of standard.
Provide 682mm vanity with single basin and
1200mm x 850mm aluminium frame sliding window to new Powder.
Remove Walk-in Linen cupboard and provide
built-in Linen cupboard with 820mm hinged door.

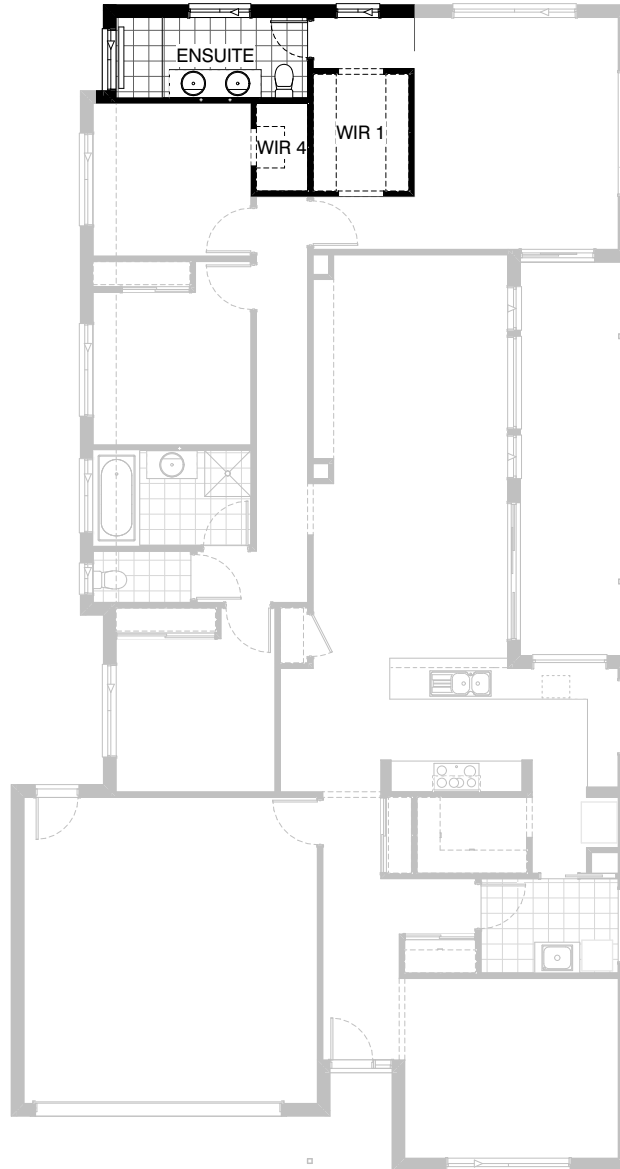
Note:
Option only available with Option External01.

Option not available with options Internal01, Internal02



Option Internal06

Provide floor plan option with raised ceiling height to the Family/Meals area (including square set cornice) and raked ceiling to the Alfresco, including:
 2No. 514mm x 850mm aluminium frame fixed highlight windows,
 2No. 514mm x 1810mm aluminium frame fixed highlight window,
 2No. 514mm x 2710mm aluminium frame fixed highlight window.
 Remove 2No. timber posts to Alfresco and provide 2No. steel posts within walls with full span steel beam.
 Provide 3No. skylights to roof over Alfresco.
 Provide lightweight cladding to Alfresco walls including part Living and Bed 1 walls.



Option Ensuite01

Provide Ensuite upgrade option, including:
rearranged layout,
1782mm vanity with double basins,
1570mm x 900mm tiled shower base with grate drain,
relocated toilet pan.
Remove Nook area and reconfigure Walk-in Robe with
additional bulkhead opening.
Provide Walk-in Robe to Bed 4 in lieu of standard built-in
Robe.
Provide 1027mm x 1210mm and 1800mm x 850mm
aluminium frame sliding windows in lieu of standard.

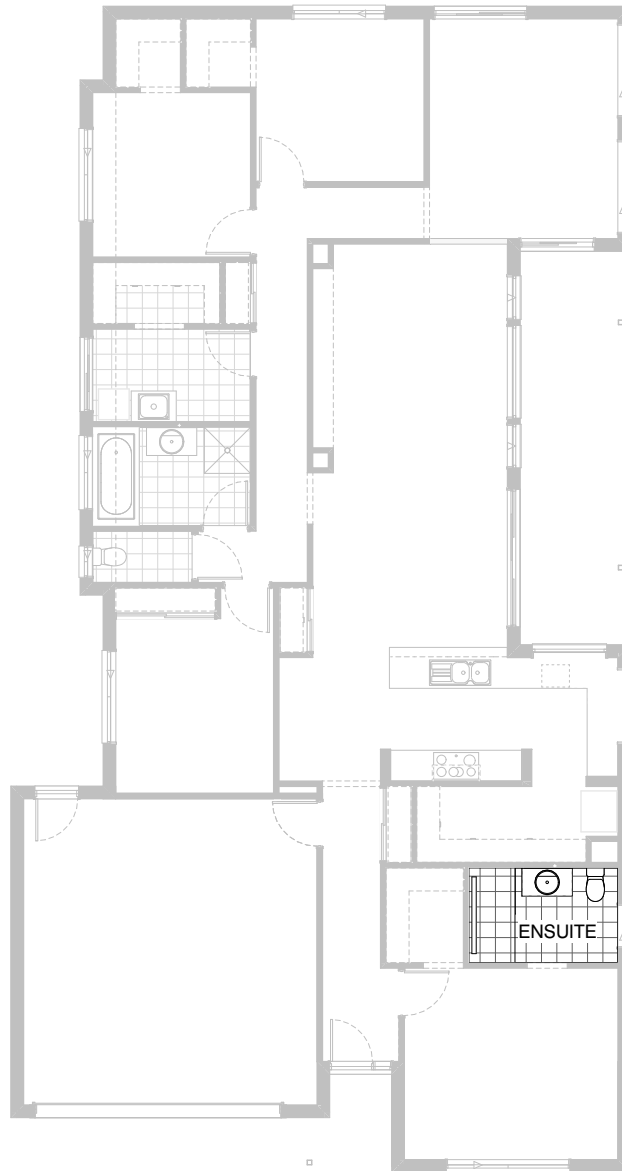
Note:
Option not available with Option External01.



Option Ensuite02

Provide Ensuite upgrade option, including: rearranged layout, 2082mm vanity with double basins, 1980mm x 900mm tiled shower base with grate drain, enclosed WC with 720mm hinged door. Remove Dresser area and provide bulkhead opening to Ensuite in line with Walk-in Robe. Provide 350mm x 1450mm aluminium frame sliding window with tiled reveals and 1200mm x 850mm aluminium frame sliding window in lieu of standard. Option pushes out 450mm under the eave and adds 1.67m² to the total floor area.

Note:
Option not available with option External01.

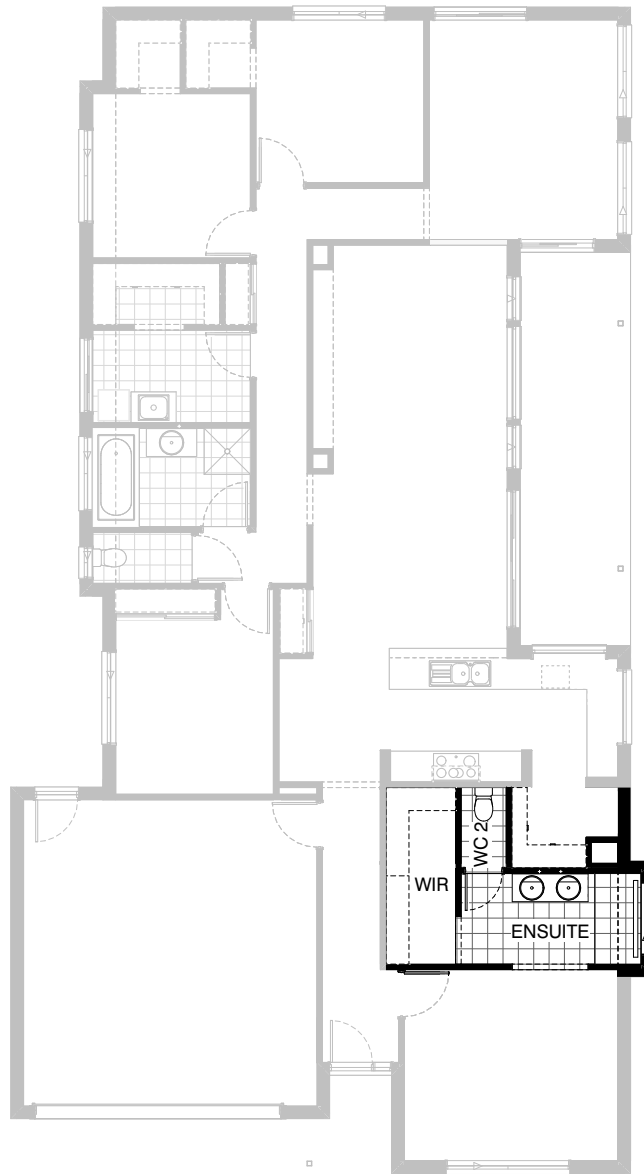


Option Ensuite03

Provide Ensuite upgrade option, including:
1850mm x 900mm tiled shower base with
grate drain in lieu of standard.

Note:

Option only available with option External01.

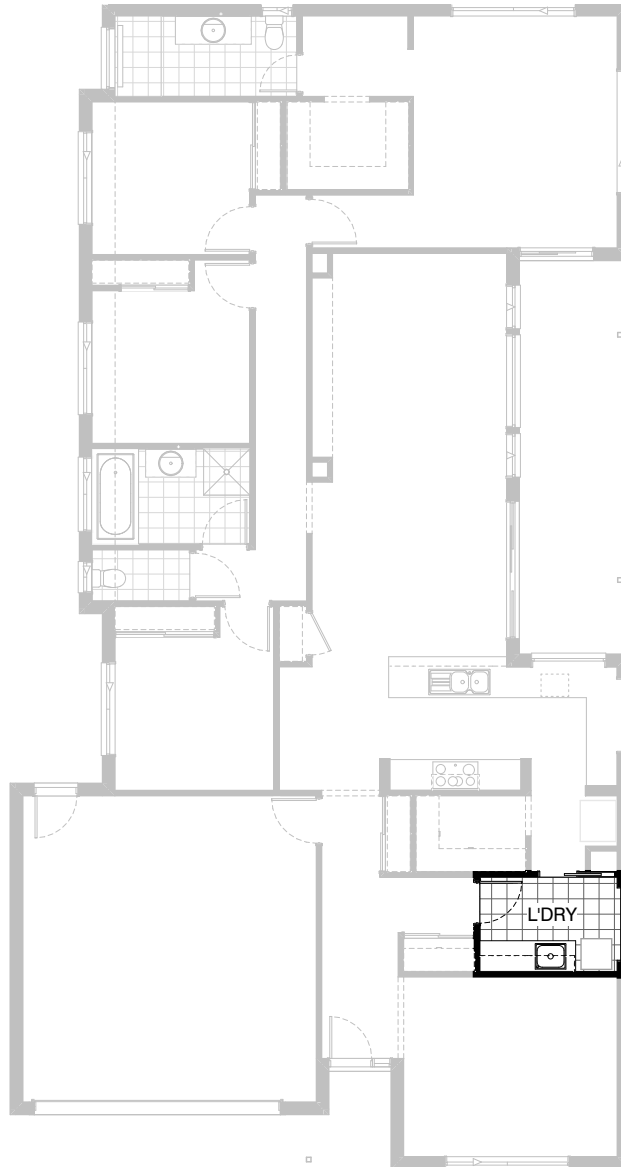


Option Ensuite04

Provide Ensuite upgrade option with rearranged layout, including:
 1482mm vanity with double basins,
 1770mm x 900mm tiled shower base with grate drain,
 enclosed WC with 720mm hinged door.
 Provide 350mm x 1450mm aluminium frame sliding window with
 tiled reveals in lieu of standard.
 Remove Coats cupboard to Passage and
 reconfigure Walk-in Robe as shown.

Option takes space from Walk-in Pantry and pushes out 450mm
 under the eave adding 1.02m² to the total floor area.

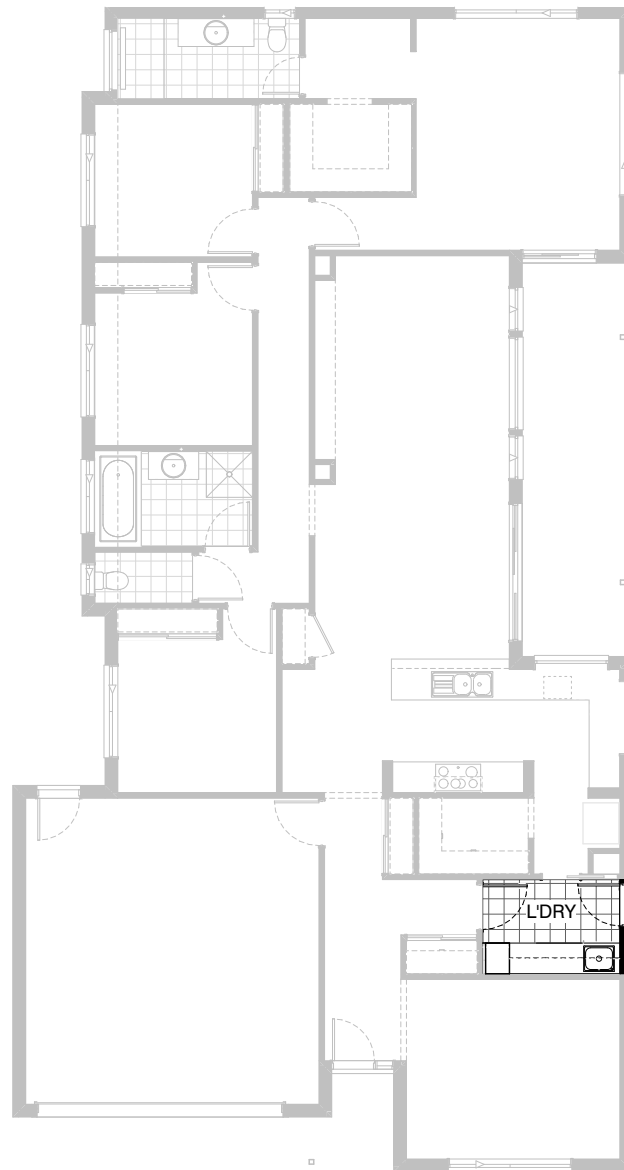
Note:
 Option only available with Option External01.



Option Laundry01

Provide Laundry upgrade option, including:
600mm deep 32mm thick laminate bench top,
stainless steel inset trough,
2No. 700mm base cupboards,
2No. 700mm overhead cupboards,
1No. 400mm full height laminate Broom cupboard,
additional tiled splashback to suit.

Note:
Option not available with Option External01.



Option Laundry02

Provide Laundry upgrade option, including:
600mm deep 32mm thick laminate bench top,
stainless steel inset trough,
1No. 700mm base cupboard,
3No. 700mm overhead cupboards,
1No. 450mm full height laminate Broom cupboard,
additional tiled splashback to suit.
Raise bench height to 950mm to allow for washer
and dryer to be stored under side-by-side.
Option also provides 2105mm x 850mm
aluminium frame entry door in lieu of
2100mm x 1450mm aluminium frame sliding door.

Note:
Option not available with Option External01.



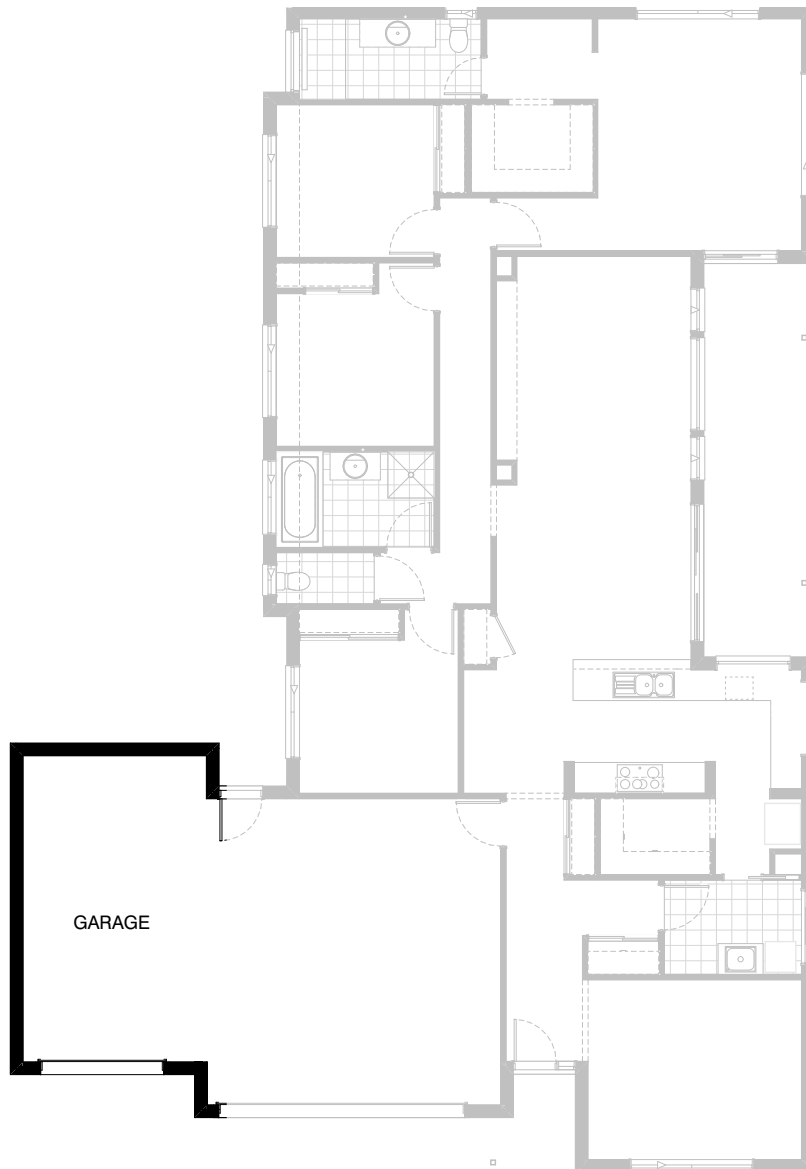
Option Garage01

Provide extension to Garage to create additional Storage area with additional window to suit.
Increases area by 9.48m².
Increases width by 1680mm.



Option Garage02

Provide extension to Garage to create Workshop area with additional 2057mm x 1450mm full height aluminium frame awning window.
Increases width of home by 2400mm.
Increases total floor area by 13.54m².



Option Garage03

Provide extension to Garage to create Triple Car Garage with additional 2140mm x 2410mm garage door as per colour selection.
Increases width of home by 3600mm.
Increases total floor area by 23.73m².