

**Facades available:**

Callington, Harrogate, Kent

Lancaster, Sheffield, Swansea

Wiltshire, Eastwood

**Overall home width 8.99m**

**Overall home length 21.59m**

Residence 127.2m<sup>2</sup> 13.7sq

Garage 24.4m<sup>2</sup> 2.6sq

Porch 5.2m<sup>2</sup> 0.6sq

**Total 156.7m<sup>2</sup> 16.9sq**

Listed details based on Sheffield facade floorplan (illustrated)

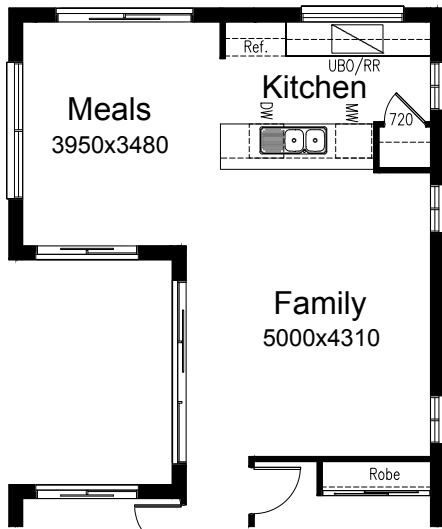
**FLOORPLAN OPTIONS**

We personalise our floorplans.

Talk to us about our huge range of ready-to-go design options or simply visit [www.burbank.com.au/south-australia](http://www.burbank.com.au/south-australia) for more details.

**OPTION IP1**

Provide alternate Kitchen / Family / Meals area including additional ASD2118 aluminium sliding door to Meals. Relocate Pantry and provide single 720mm door in lieu of double and increase Bed 2 robe by 400mm. Provide 3no. ASW1809 aluminium sliding windows to Family and Kitchen in lieu of standard.



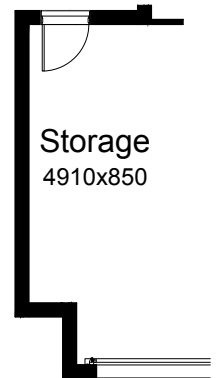
**OPTION EP1**

Provide roof over Courtyard to create Alfresco. Increases floor area by 11.43m<sup>2</sup>. NOTE: Option requires land size to be minimum 330m<sup>2</sup>.



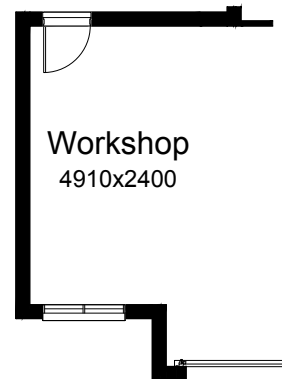
**OPTION G1**

Provide extension to Garage to create additional Storage area. Increases area by 4.53m<sup>2</sup>. Increases width by 840mm.



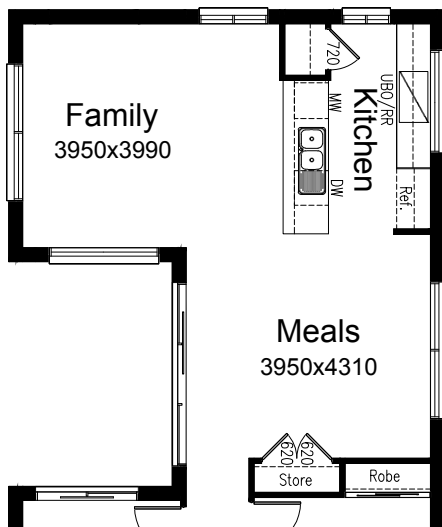
**OPTION G2**

Provide extension to Garage to create Workshop area including additional AAWF2015 Aluminium awning window. Increases length by 2400mm. Increases area by 12.93m<sup>2</sup>.



**OPTION IP2**

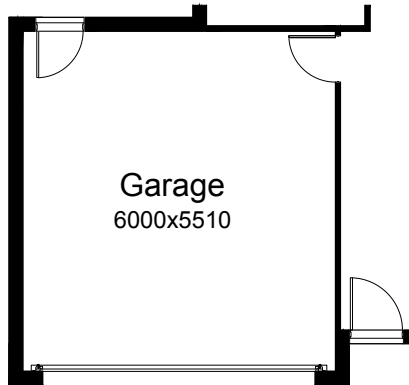
Provide alternate Kitchen / Family / Meals area including removal of ASD2127 aluminium sliding door. Rename existing Pantry to Store and provide additional Pantry with single 720mm door. Provide 1no. ASW1809 & 1no. ASW1812 aluminium sliding windows to Family and Kitchen.



**OPTION G3**

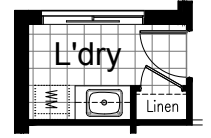
Provide double Garage including 4810mm wide garage door in lieu of 2410mm.

Increases area by 12.42m<sup>2</sup>.  
Increases width by 1920mm.



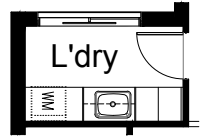
**OPTION LD1**

Provide Laundry upgrade with Laminated insert trough, 1no. 900mm base cupboard, 1no. 900mm overhead cupboard, Additional tiled splash back and bench top to suit.



**OPTION LD2**

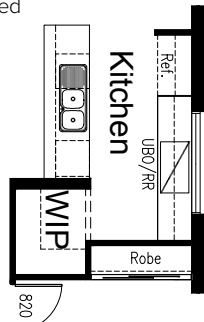
Provide Laundry upgrade with Laminated insert trough, 1no. 900mm base cupboard, 1no. 900mm overhead cupboard, 1no. 400mm Linen cabinet, 1no. 400mm Broom cabinet, Additional tiled splash back and bench top to suit with bench top extending to wall.



**OPTION K1**

Provide Pantry upgrade by creating WIP. Remove double doors, provide opening via Kitchen and increase Bed 2 robe by 270mm. Provide additional plaster lined walls and additional 450mm shelving to suit.

NOTE: Not available with options IP1, IP2 & K2

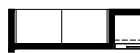


**OPTION K2**

Provide Pantry upgrade by removing double doors and provide 2No. 800mm pantry units.

Option reduces Bed 2 robe by 170mm

NOTE: Not available with options IP1, IP2 & K1



**OPTION ENS1**

Provide Ensuite upgrade by increasing tiled shower base to 900mm x1800mm, relocate toilet and provide 782mm vanity in lieu of 1582. Provide ASW1012 aluminium sliding window.

