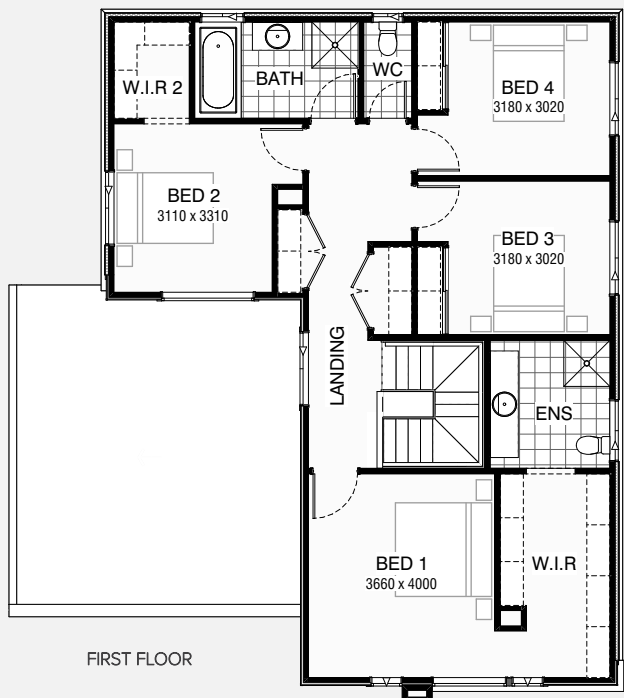


MYERS 242

4 2.5 2

Total squares 26.1sq



Design Dimensions  
11,990mm(W) x 13,550mm(L).

Facade Choices  
Fullerton, Huntington, Moorpark,  
Oakwood, Palisades, Redlands, Riverside.  
Details based on Riverside façade floorplan (illustrated)

B  
SERIES

Minimum  
Lot Width  
14.0m

Minimum  
Lot Length  
21.0m

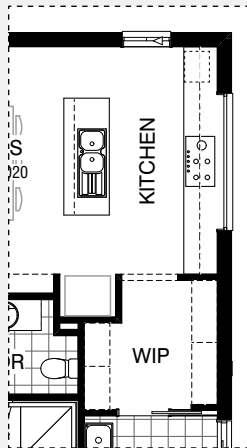
DESIGN DIMENSIONS		
Residence	198.9m <sup>2</sup>	21.4sq
Garage	39.5m <sup>2</sup>	4.3sq
Porch	3.8m <sup>2</sup>	0.4sq
Total	242.2m <sup>2</sup>	26.1sq



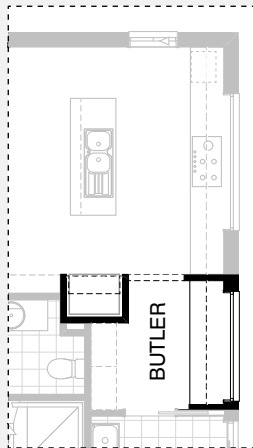
\*Copyright conditions. All photos and illustrations are representative only. Floor plans and specifications may be varied by Burbank without notice, the dimensions are diagrammatic only and a Building Contract with final drawings will display correct dimensions and detail. All designs are the property of Burbank and must not be used, reproduced, copied or varied, wholly or in part without written permission from an authorised Burbank representative. Copyright Burbank Australia Pty Ltd. ABN 91 007 099 872. Builders Registration Number CDB-U-52603.



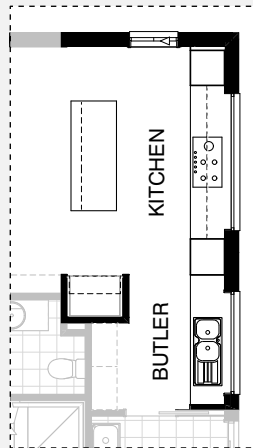
KITCHEN OPTIONS



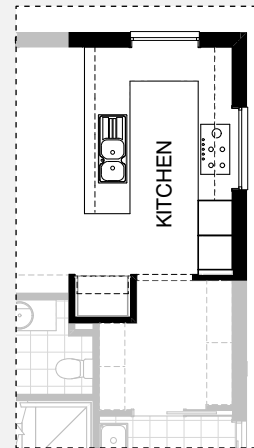
Master Kitchen Design



K01

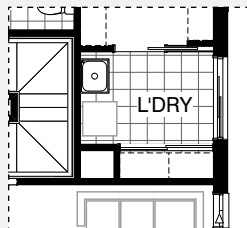


K02

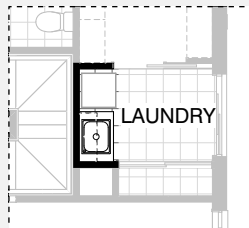


K03

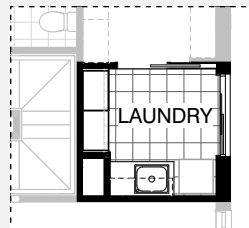
LAUNDRY OPTION



Master Laundry Design

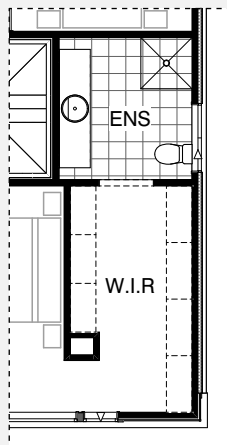


LD01

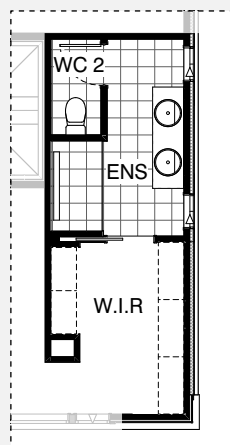


LD02

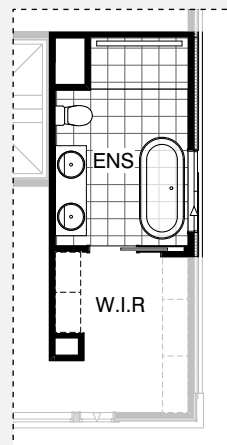
ENSUITE OPTIONS



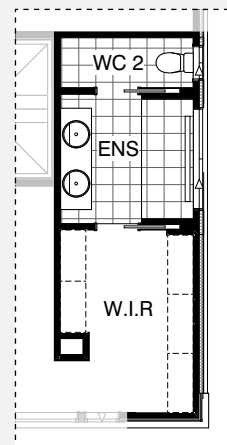
Master Ensuite Design



EN01



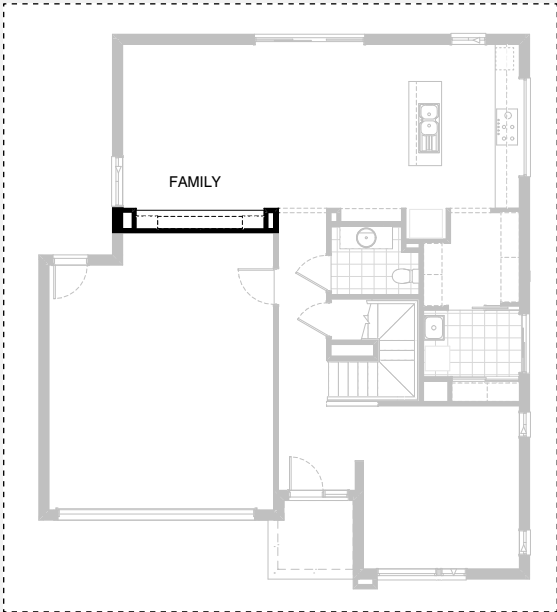
EN02



EN03

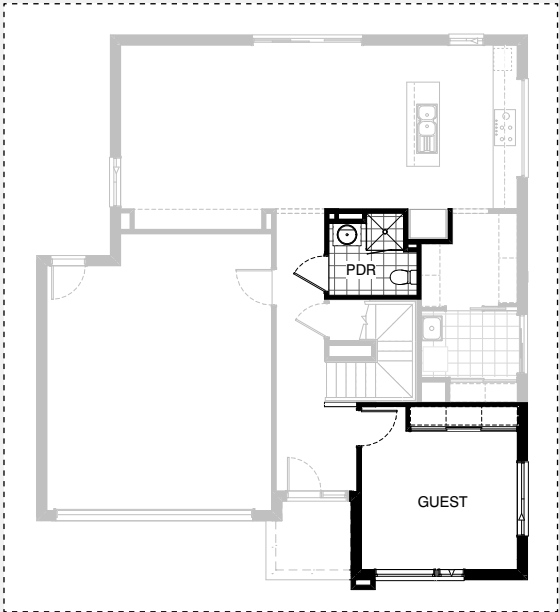


INTERNAL OPTIONS



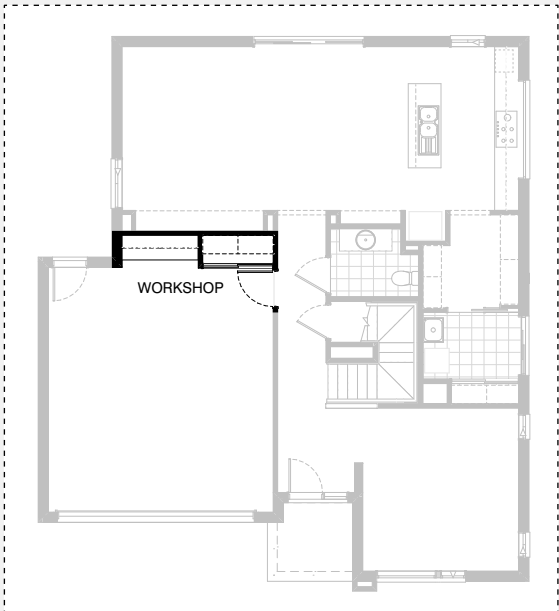
GROUND FLOOR

IN01



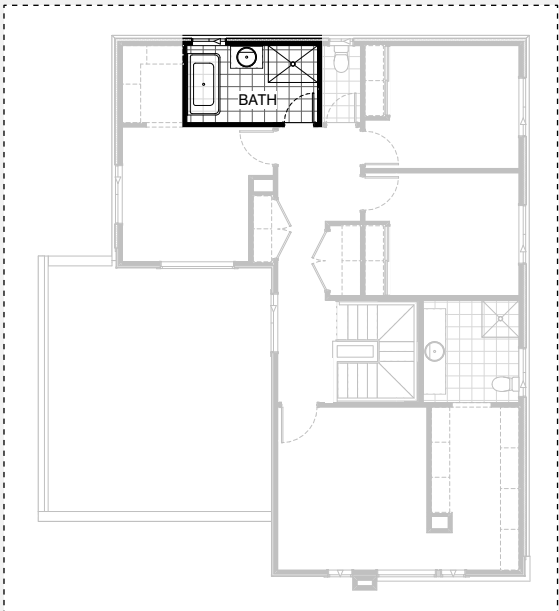
GROUND FLOOR

IN02



GROUND FLOOR

IN03



FIRST FLOOR

IN04





INTERNAL OPTIONS



FIRST FLOOR

IN05



# MYERS 242

## OPTION DESCRIPTIONS

### Kitchen Option 01

Provide Butler's Pantry in lieu of Walk-in Pantry, including:  
20mm stone benchtop, 1No. 900mm base cupboard, 2No. 600mm base cupboards, 1No. 900mm overhead cupboard, 2No. 600mm overhead cupboards, additional 514mm x 1930mm Aluminium Fixed Window 1No. open shelf over Ref space.

### Kitchen Option 02

Provide Kitchen upgrade option with Butler's, including:  
Kitchen:  
4No. 900mm base cupboards, 1No. 700mm base cupboard, 1No. 900mm retractable rangehood, 2No. 900mm overhead cupboards, 2No. 600mm oven towers with microwave provisions, 1No. dishwasher provision, additional 1200mm x 1810mm Aluminium Fixed Window over sink, 1No. open shelf over Ref space,  
Island:  
1No. 450mm drawer unit, 2No. 700mm base cupboards.

### Kitchen Option 03

Provide Kitchen upgrade option with U-shaped benchtop, including:  
2No. 900mm corner base cupboards, 2No. 900mm base cupboards, 1No. 600mm base cupboard, 2No. 450mm base cupboards, 1No. 450mm drawer unit, 1No. 900mm retractable rangehood, 1No. 800mm overhead cupboard, 2No. 450mm overhead cupboards, 2No. 600mm oven towers with microwave provisions, 1No. dishwasher provision, Provide 514mm x 1450mm Aluminium Fixed Window over cooktop in lieu of standard and additional 1200mm x 1210mm Aluminium Fixed Window, 1No. open shelf over Ref space.

### Laundry Option 01

Provide Laundry upgrade with laminate base and overhead cupboards and stainless steel inset trough, including:  
1No. 800mm base cupboard, 1No. 800mm overhead cupboard, 32mm laminate benchtop and tiled splashback to suit.

### Laundry Option 02

Provide Laundry upgrade option with laminate base and overhead cupboards and stainless steel inset trough, including:  
1No. 700mm base cupboard, 1No. 350mm base cupboard, 1No. 700mm overhead cupboard, 1No. 350mm overhead cupboard, 2No. 700mm full height laminate cupboards with 5No. 450mm shelves, 32mm laminate benchtop and tiled splashback to suit.

### Ensuite Option 01

Provide First Floor Ensuite upgrade option, including:  
Enclosed WC with 1No. 720 hinged door, 1580mm x 900mm wall to wall tiled shower base, 1No. 1782mm double vanity in lieu of standard, 1No. 820mm cavity sliding door, 2No. 1200mm x 610mm Aluminium Sliding Window in lieu of standard.  
Notes: Ensuite increased by 960mm. Bed 1 decreased by 200mm.

### Ensuite Option 02

Provide First Floor Ensuite upgrade option including:  
1No. 1700mm freestanding bath tub, 1715mm x 900mm wall-to-wall tiled shower base and Void to accommodate, 1No. 1582mm double vanity in lieu of standard, 1No. 820mm cavity sliding door, 1No. 1200mm x 1450mm Aluminium Sliding Window in lieu of standard.  
Notes: Ensuite increased by 1160mm. Bed 1 decreased by 200mm.

### Ensuite Option 03

Provide First Floor Ensuite upgrade option including:  
Enclosed WC with 1No. 720 cavity sliding door, 2100mm x 910mm wall-to-wall tiled shower base, 1No. 1782mm double vanity in lieu of standard, 1No. 720mm cavity sliding door, 1No. 300mm x 1810mm Aluminium Sliding Window in lieu of standard, 1No. 1027mm x 610mm Aluminium Sliding Window to WC.  
Notes: Ensuite increased by 770mm. Bed 1 decreased by 200mm.

### Internal Option 01

Provide built-in joinery option to Family, including: 450mm deep 32mm thick benchtop, 3No. 1000mm T.V cupboard units, 2No. 450mm open shelf units with bulkheads, 2No. 300mm deep 60mm thick open shelves over.

### Internal Option 02

Provide Guest Bedroom option in lieu of Living room with built-in Robe, sliding doors, 450mm shelf with hanging rail and 1No. 870mm hinged door to Entry. Provide 1No. 514mm x 1810mm Aluminium Sliding Window in lieu of 2No. standard. Provide larger Powder room with 900mm x 900mm recessed tiled shower base in lieu of Nook.  
Note: REF. space slightly relocated.

### Internal Option 03

Provide Storage option to Garage including additional built-in Linen with 4No. 450mm shelves and sliding doors. 2No. 900mm base cupboards, 2No. 900mm overhead cupboards, 32mm laminate benchtop and tiled splashback to suit.

### Internal Option 04

Provide First Floor Bathroom upgrade option including: 1200mm x 900mm tiled shower base in lieu of standard, 1No. 782mm vanity in lieu of standard, 1No. 1500mm back to wall freestanding bath.

### Internal Option 05

Provide First Floor Study Nook in lieu of Linen to first floor passage with built-in joinery, including: 600mm deep 32mm thick laminate bench top desk, 2No. 300mm deep 60mm thick open shelves over desk, Additional bulkhead over desk area.  
Notes: Remove existing Linen with 2No. 720mm hinged door

