

# KENWOOD 182

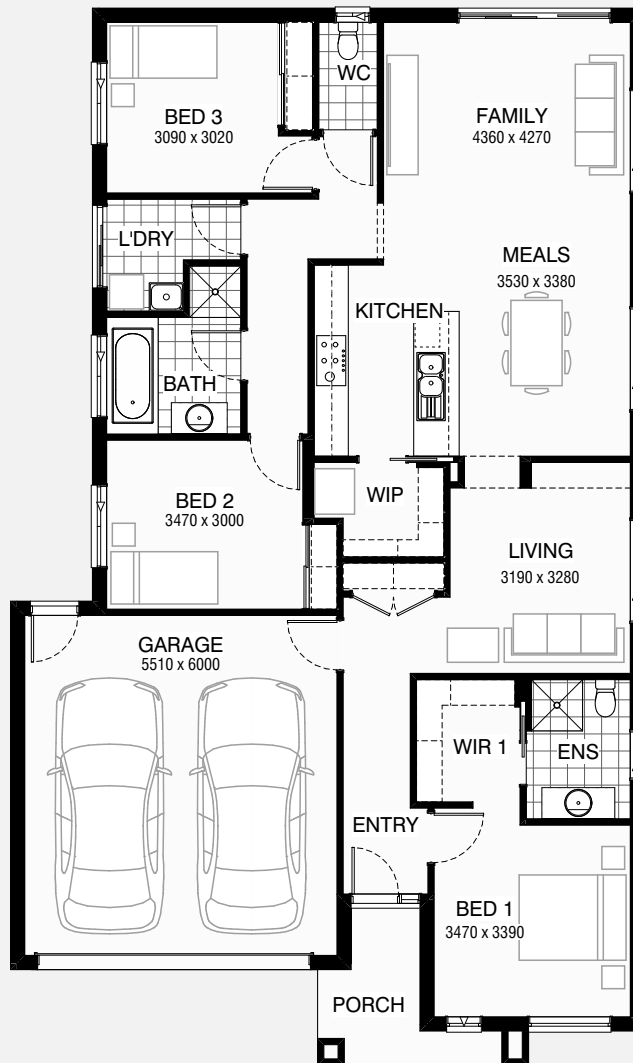
3 2 2

Total squares 19.6sq

**B**  
SERIES

Minimum  
Lot Width  
**12.5m**

Minimum  
Lot Length  
**25.0m**



**Design Dimensions**  
11,150mm(W) x 18,590mm(L).

**Facade Choices**  
Brentwood, Glendale, Inglewood,  
Malibu, Northridge, Pasadena, Santa Monica.  
Details based on Inglewood façade floorplan (illustrated)

**DESIGN DIMENSIONS**

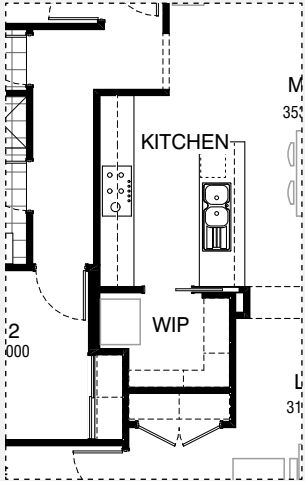
|              |                           |               |
|--------------|---------------------------|---------------|
| Residence    | 140.0m <sup>2</sup>       | 15.1sq        |
| Garage       | 36.4m <sup>2</sup>        | 3.9sq         |
| Porch        | 5.5m <sup>2</sup>         | 0.6sq         |
| <b>Total</b> | <b>181.9m<sup>2</sup></b> | <b>19.6sq</b> |

**Burbank**

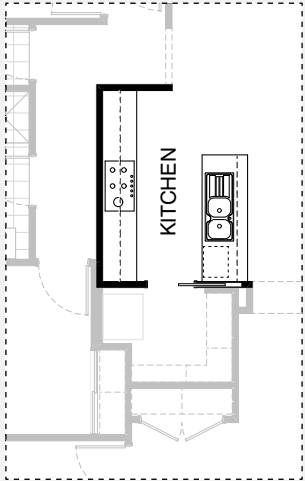
\*Copyright conditions. All photos and illustrations are representative only. Floor plans and specifications may be varied by Burbank without notice, the dimensions are diagrammatic only and a Building Contract with final drawings will display correct dimensions and detail. All designs are the property of Burbank and must not be used, reproduced, copied or varied, wholly or in part without written permission from an authorised Burbank representative. Copyright Burbank Australia Pty Ltd. ABN 91 007 099 872. Builders Registration Number CDB-U-52603.



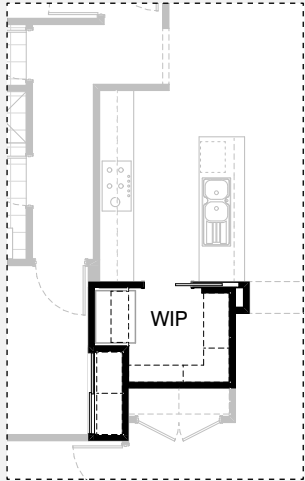
KITCHEN OPTIONS



Master Kitchen Design

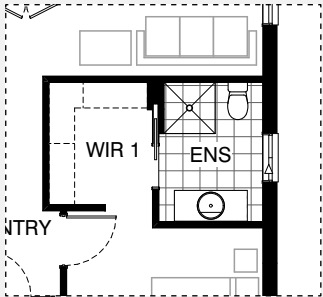


K1

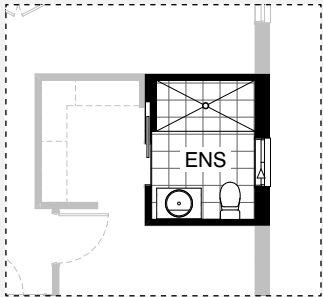


K2

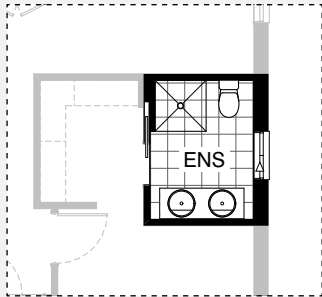
ENSUITE OPTIONS



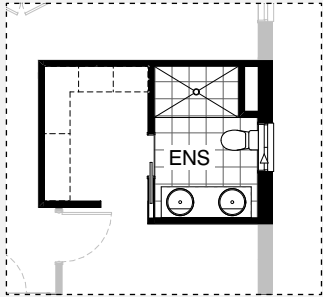
Master Ensuite Design



EN1



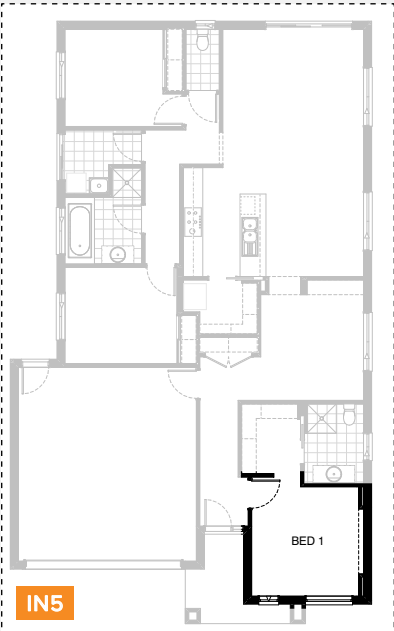
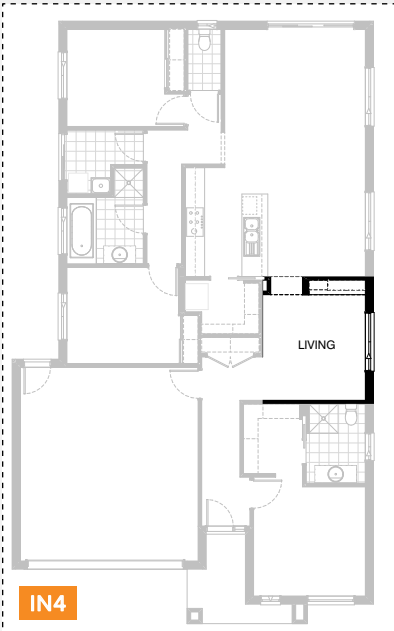
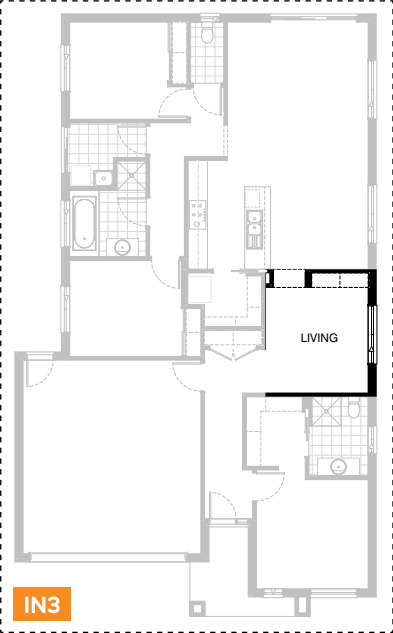
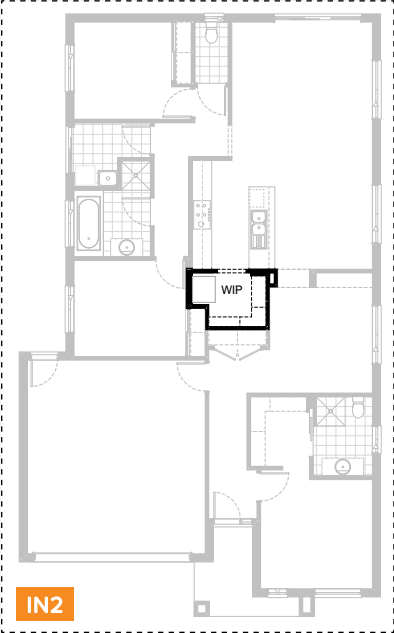
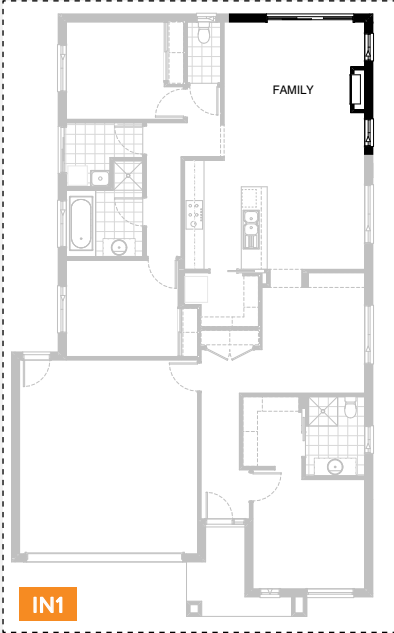
EN2



EN3



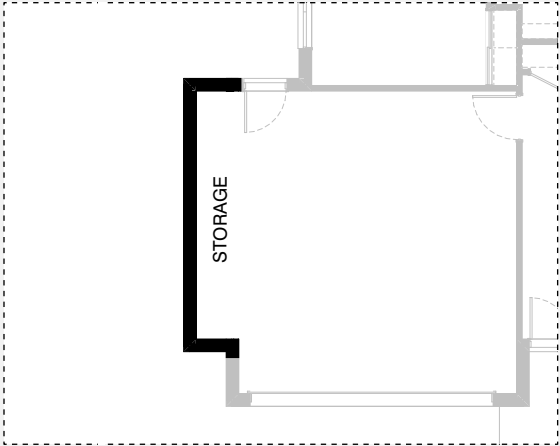
INTERNAL OPTION



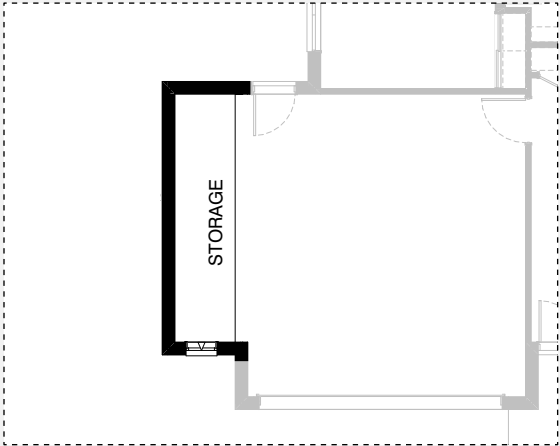
EXTERNAL OPTION



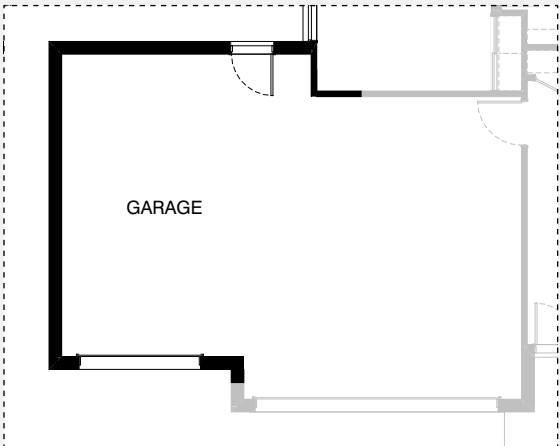
GARAGE OPTIONS



G1



G2



G3

# KENWOOD 182

## OPTION DESCRIPTIONS

### Kitchen Option 01

Provide Kitchen upgrade with 1No. 900mm retractable rangehood, 1No. 900mm gas cooktop, 1No. 900mm electric underbench oven, 1No. 900mm base cupboard, 1No. 800mm base cupboard, 2No. 400mm base cupboards, 1No. 350mm base cupboard, 2No. 800mm overhead cupboards, 2No. 400mm overhead cupboards, 1No. laminated Microwave provision with pot drawer below. 1No. 450mm drawer unit, 1No. laminated DW provision

### Kitchen Option 02

Provide Kitchen upgrade with 1no. laminated open shelf to above refrigerator space.

### Ensuite Option 01

Provide Ensuite Option with wall to wall tiled shower base in lieu of 1no. 900mm x 900mm tiled shower base and 1no. 782mm vanity unit in lieu of standard 1no. 1282mm wide vanity unit.

### Ensuite Option 02

Provide Ensuite upgrade by providing 900mm x 900mm tiled shower in lieu of standard. Provide 1482 vanity with double basins.

### Ensuite Option 03

Provide Ensuite Option with 1no. 1500mm x 900mm tiled shower base in lieu of standard, 1no. 1582mm wide vanity unit with 2no. basins and drawer unit. 1no. 1027mm x 850mm aluminium sliding window in lieu of standard. Increase Ensuite and WIR length by 220mm and reduce Living accordingly.

### Internal Option 01

Provide Real Flame Inspire 900 gas fireplace, 400mm off floor level in a 1400mm x 420mm boxed out plaster wall with a 4 sided black fascia to Family room side wall including additional 2no. 1800mm x 850mm aluminium sliding windows in lieu of standard 1no. 510mm x 1810mm window.

### Internal Option 02

Provide plaster bulkhead 900mm wide opening to W.I.P. in lieu of standard cavity sliding door

### Internal Option 03

Provide 4no. 450mm wide x 32mm thick laminated shelves to Living alcove.

### Internal Option 04

Provide cabinet and shelving unit, 3no. 550mm wide base cabinets, 2no. 550mm wide overhead cabinets. 2no. open laminated shelves and 32mm thick laminated bench top.

### Internal Option 05

Provide 150mm plaster feature wall protrusion with a 500mm deep plastered bulkhead.

### External Option 02

Provide Alfresco to rear of Family with tiled hip roof, structural concrete floor, light point and 2no. 470mm x 470mm brick piers. Increases area by 14.35m<sup>2</sup>. Increase length by 3240mm. Overall width is 4430mm.

### Garage Option 01

Provide extension to Garage to create additional Storage area. Increases area by 4.54m<sup>2</sup>. Increases width by 840mm.

### Garage Option 02

Provide extension to Garage to create Storage area including additional 2057 x 610 aluminium awing window. Increases area by 7.78m<sup>2</sup>. Increases width by 1440mm.

### Garage Option 03

Provide triple car garage including additional garage door as per colour selection Increases area by 24.54m<sup>2</sup>. Increases width by 3600mm. Bed 2 window moves 120mm towards rear of house.

