


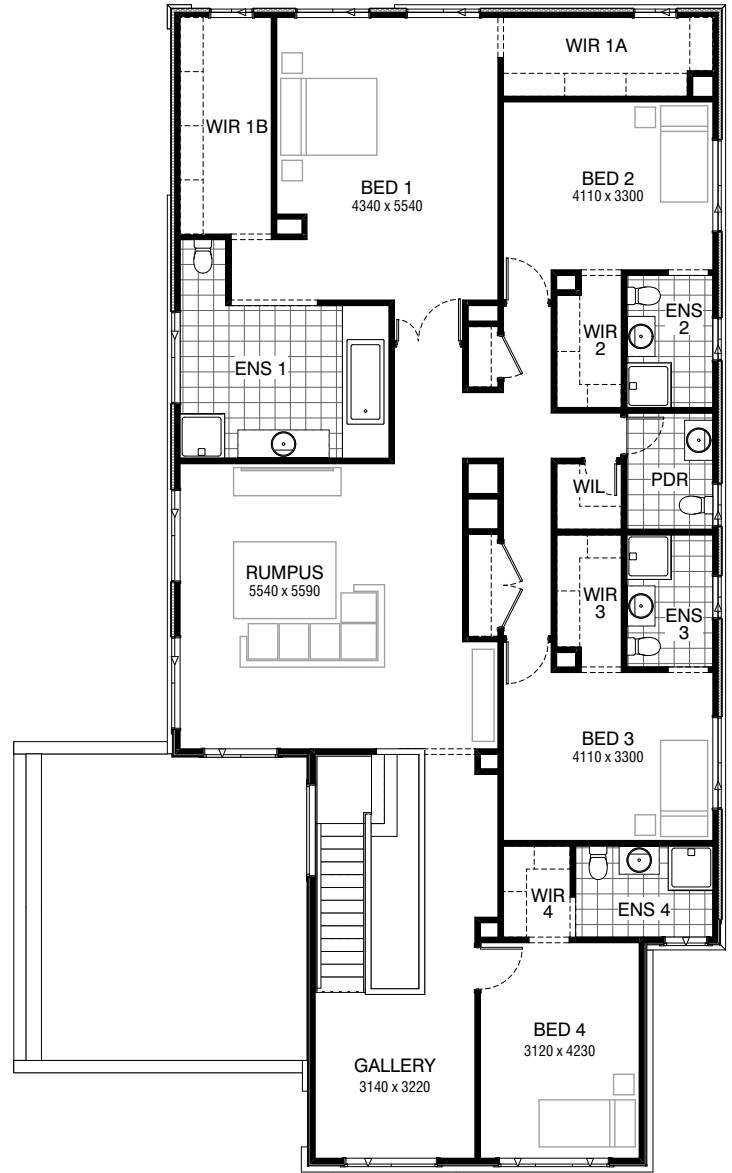


Total squares **50.4sq**

 **5**  **5.5**  **2**



GROUND FLOOR



FIRST FLOOR

**FLOORPLAN OPTIONS**




All available ready-to-go floorplan options for this design can be viewed on the following pages, or visit [www.burbank.com.au](http://www.burbank.com.au).

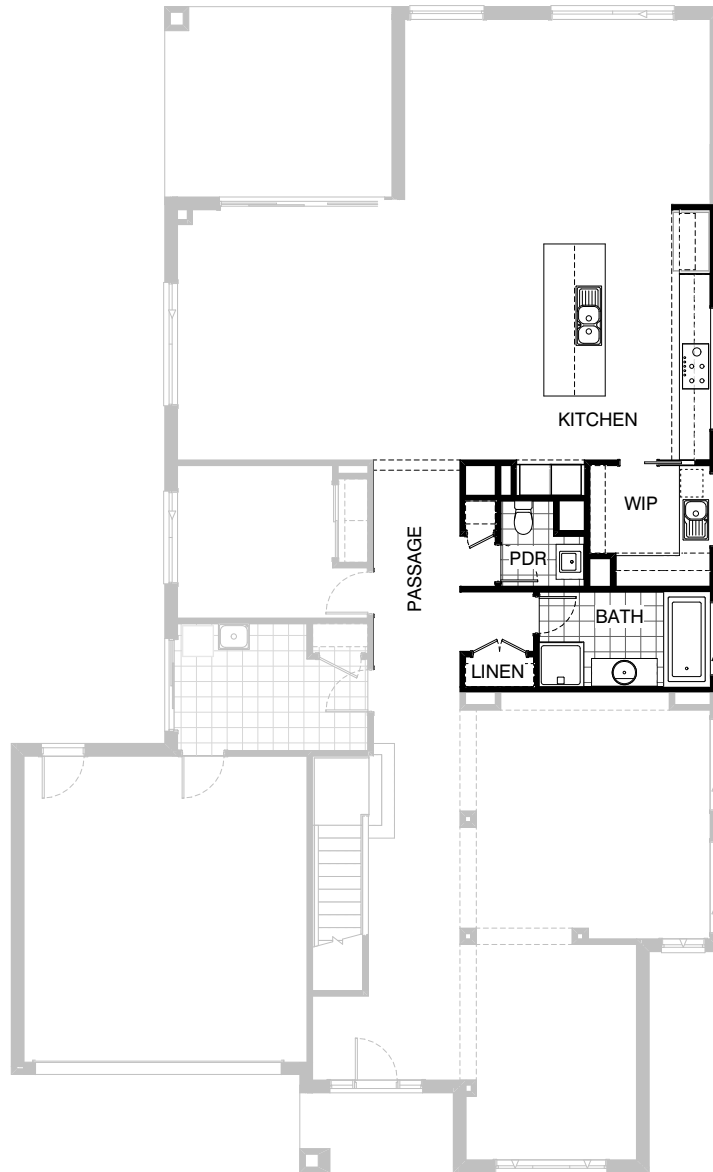
**Facades available:**

Condor, Matisse, Monet, Aqua	Residence	410.1m <sup>2</sup>	44.1sq
Hester, Metropolitan, Orana	Garage	36.8m <sup>2</sup>	4.0sq
Rainforest	Porch	4.7m <sup>2</sup>	0.5sq
<b>Overall home width</b>	<b>13.91m</b>	Alfresco	16.5m <sup>2</sup> 1.8sq
<b>Overall home length</b>	<b>22.55m</b>	<b>Total</b>	<b>468.1m<sup>2</sup> 50.4sq</b>

Listed details based on Condor façade floorplan (illustrated)

**FLOORPLAN OPTIONS**




 **5**  **5.5**  **2**



**Option K-1**

Provide Kitchen and Butlers Option and relocate Powder and delete Linen cupboard to suit. Provide additional 4no. 300mm deep shelves, 2no. 900mm overhead cupboards, 1no. 900mm base cupboard, 1no. 900mm corner cupboard, 1no. 800mm base cupboard, 1no. laminated microwave provision, 300(D) plaster bulkhead and 1no. aluminium 1543mm x 1450mm no bottom reveal to Butlers Pantry. Provide additional 6no. 900mm base cupboards, 1no. DW provision, 1no. 450mm drawers, 1no. 450mm base cupboard, 1no. laminated fixed rear panel to island bench, 2no. 450mm base cupboards, 2no. 450mm overhead cupboards, 2no. 900mm overhead cupboards, 1no. 900mm hotplate and 1no. 900mm retractable rangehood, 1no. laminated open shelf above refrigerator space, 2no. wall oven towers with 4no. pot drawers below, 2no. wall ovens, 1no. coffee machine, 1no. steam oven and 2no. 600mm overhead cupboards. Additional 1no. 514mm x 2410mm aluminium with no bottom reveal with additional tiled splashback to Kitchen.

**FLOORPLAN OPTIONS**



 **5**  **5.5**  **2**

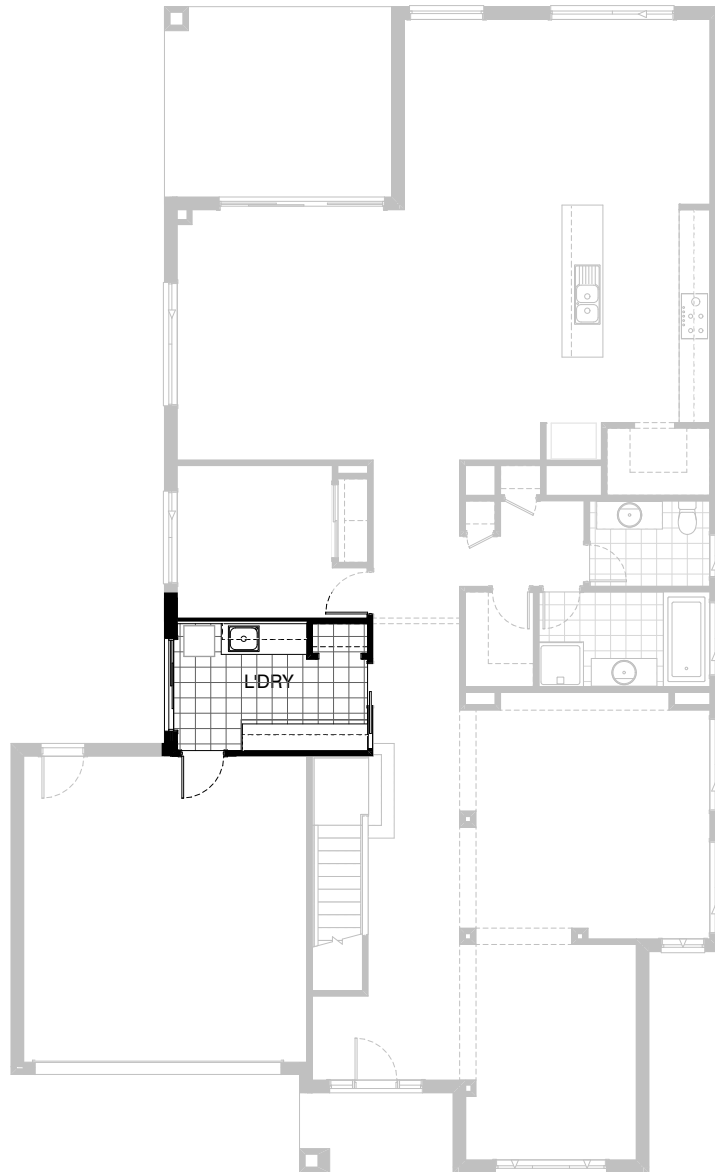


**Option K-2**

Provide Kitchen Option with additional laminated open shelf above refrigerator space.

**FLOORPLAN OPTIONS**

 **5**  **5.5**  **2**

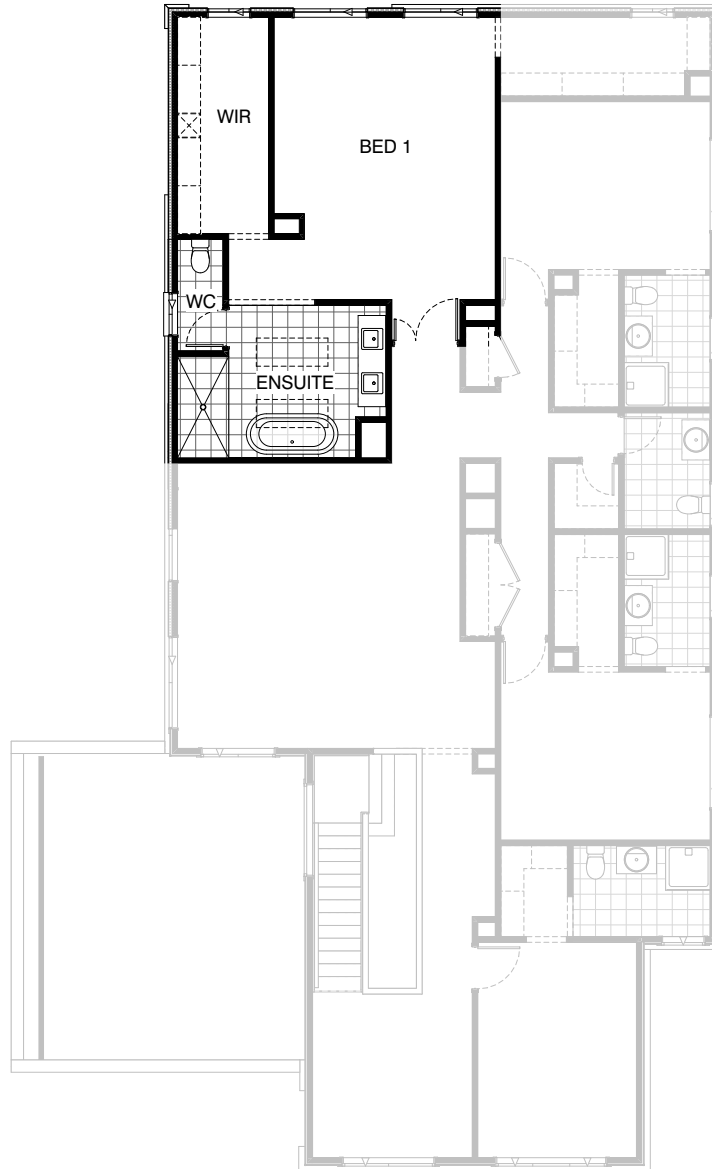


**Option LD-1**

Provide Laundry upgrade with 5no. 800mm overhead cupboards, 4no. 800mm base cupboards, 1no. 350mm base cupboard, 1no. 450mm wide drawers, additional tiled splash back and laminated bench top with 1no. 820mm sliding door in lieu of standard 1no. 820mm flush panel hinged door.

**FLOORPLAN OPTIONS**




 **5**    **5.5**    **2**

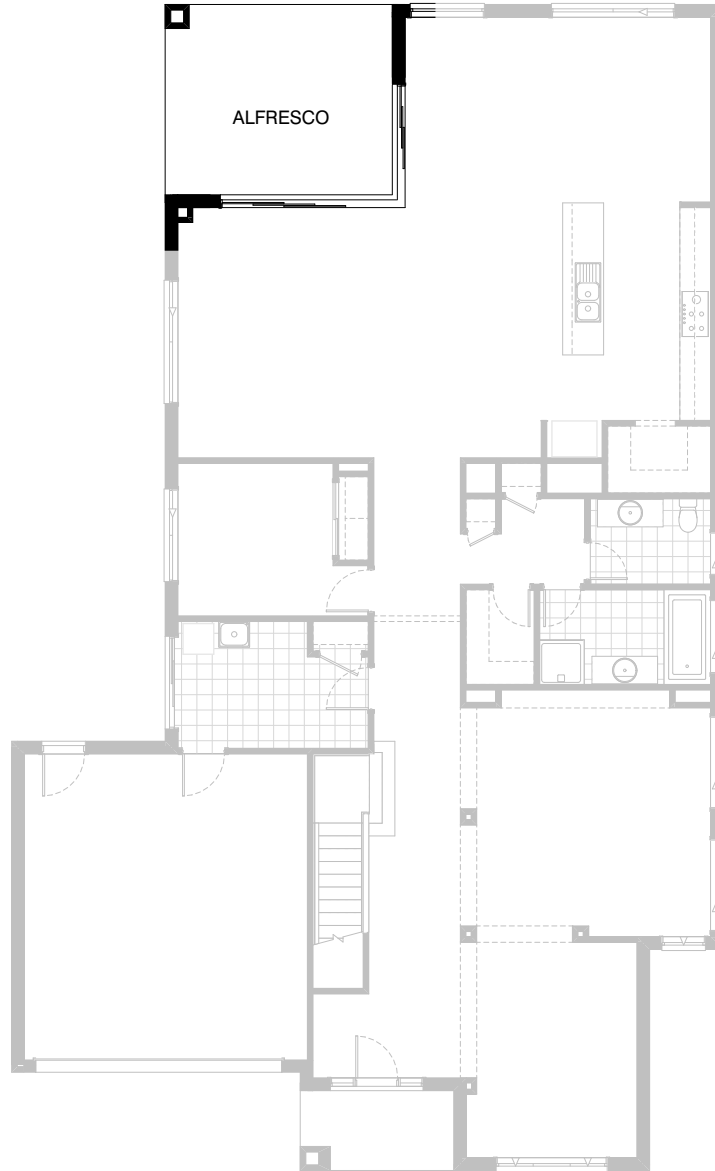


**Option ENS-1 FF**

Provide Ensuite option with plaster lined enclosed WC. Provide additional 1no. 720mm flush panel hinged door, 1no. 514mm x 850mm aluminium awning window in lieu of 1no. 514mm x 1810mm aluminium awning window, 1no. 2100mm x 1000mm tiled shower base, 2no. shower heads, 1no. free standing bath and additional 2no. Velux skylights (FS108) in lieu of standard.

**FLOORPLAN OPTIONS**




 **5**  **5.5**  **2**

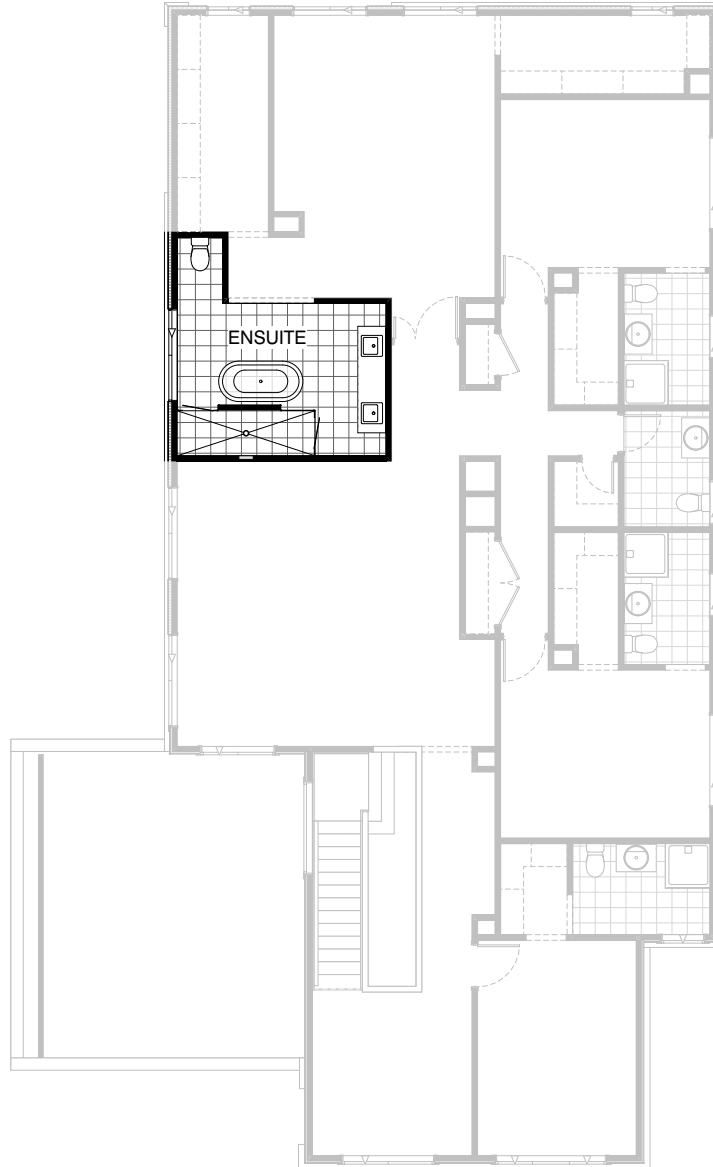


**Option IP1-1**

Provide 1no. ASCD 2397mm X 2410mm X 3610mm aluminium corner stacker doors to Family / Meals in lieu of standard.

**FLOORPLAN OPTIONS**

 **5**  **5.5**  **2**

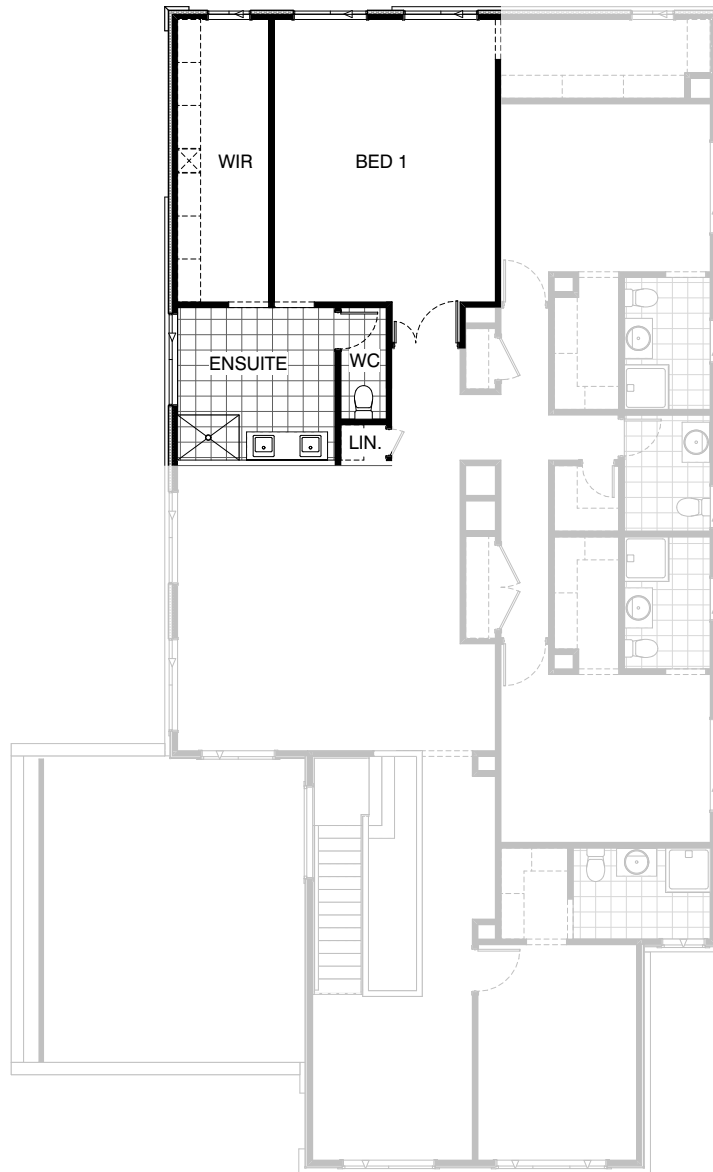


**Option IP1-2 FF**

Provide Ensuite upgrade including freestanding bath with 300mm spout, 2700mm x 900mm tiled shower base with 2no ceiling mounted shower roses, additional mixer tap, extended vanity with double basins, wall recess with 2no glass shelves and 2no frame less shower screens.

**FLOORPLAN OPTIONS**

 **5**    **5.5**    **2**





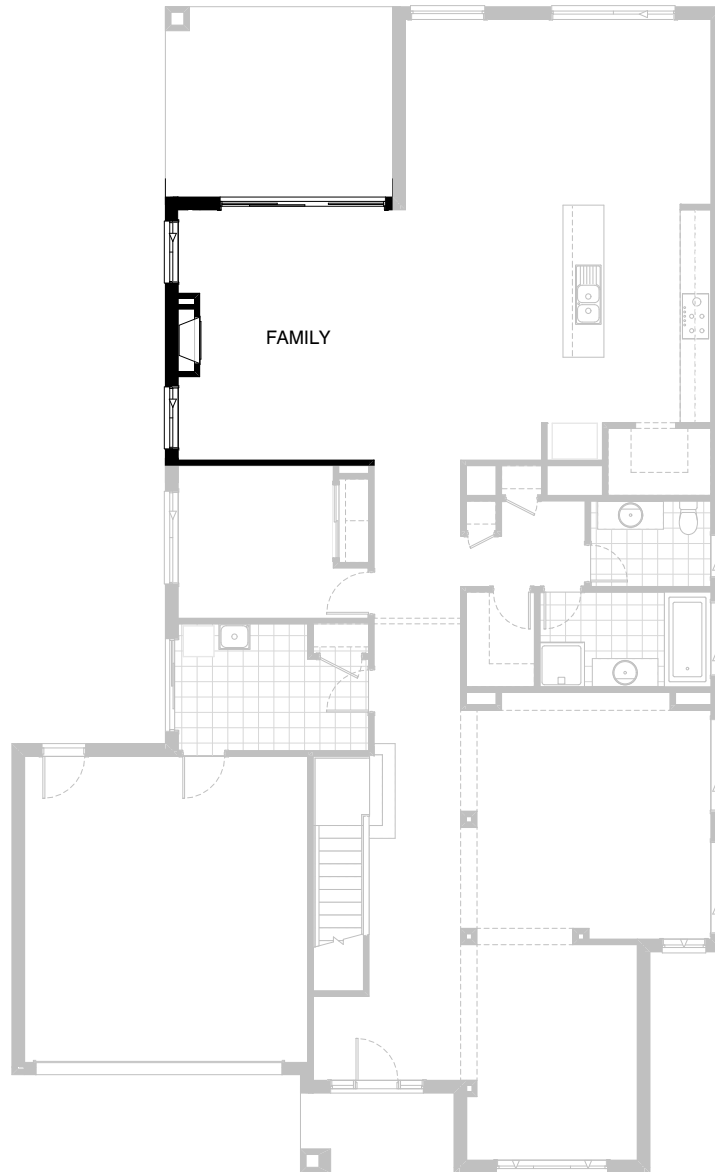
**Option IP1-3 FF**

Provide alternative Ensuite layout by deleting bath with hob and provide plaster lined enclosed WC with 1no. 720mm flush panel hinged door, plaster lined Store room with 1no. 520mm flush panel hinged door with access via passage and increased walk-in-robe including additional hanging rail and shelf and adjust Bed 1 and WIR openings to suit.



**FLOORPLAN OPTIONS**




 **5**  **5.5**  **2**



**Option IP1-4 GF**

Provide Jetmaster 3x series gas fireplace, 400mm off floor level in a 1400mm x 420mm boxed out plaster wall with a 4 sided black fascia to Family room side wall with additional 2no. 2057mm x 1210mm aluminium sliding awning windows in lieu of standard 1no. 2057mm x 2400mm window.

**FLOORPLAN OPTIONS**

 **5**  **5.5**  **2**



**Option IP1-5 FF**

Provide built-in seat option in lieu of Alcove with additional laminated panels and plaster bulkhead above.

**FLOORPLAN OPTIONS**




 **5**    **5.5**    **2**



**Option IP1-6 GF**

Provide Laundry chute in lieu of Ground floor Broom cupboard and void space to first floor

**FLOORPLAN OPTIONS**




 **5**    **5.5**    **2**



**Option IP1-6 FF**

Provide Laundry chute in lieu of Ground floor Broom cupboard and void space to first floor

**FLOORPLAN OPTIONS**




 **5**  **5.5**  **2**

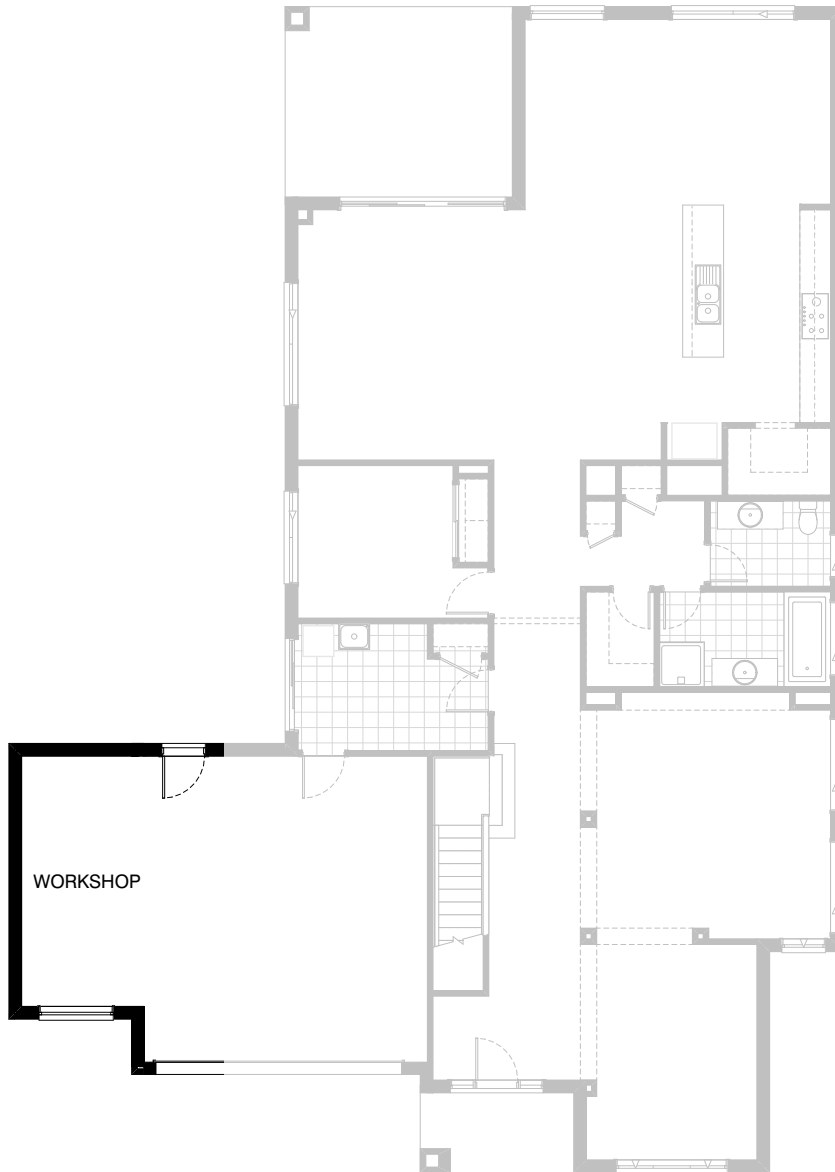


**Option G-1**

Provide extension to Garage to create additional Storage area.  
(Option available to Facades with hip roof over Garage).  
Increases area by 4.53m<sup>2</sup>.  
Increases width by 840mm.

**FLOORPLAN OPTIONS**

 **5**  **5.5**  **2**






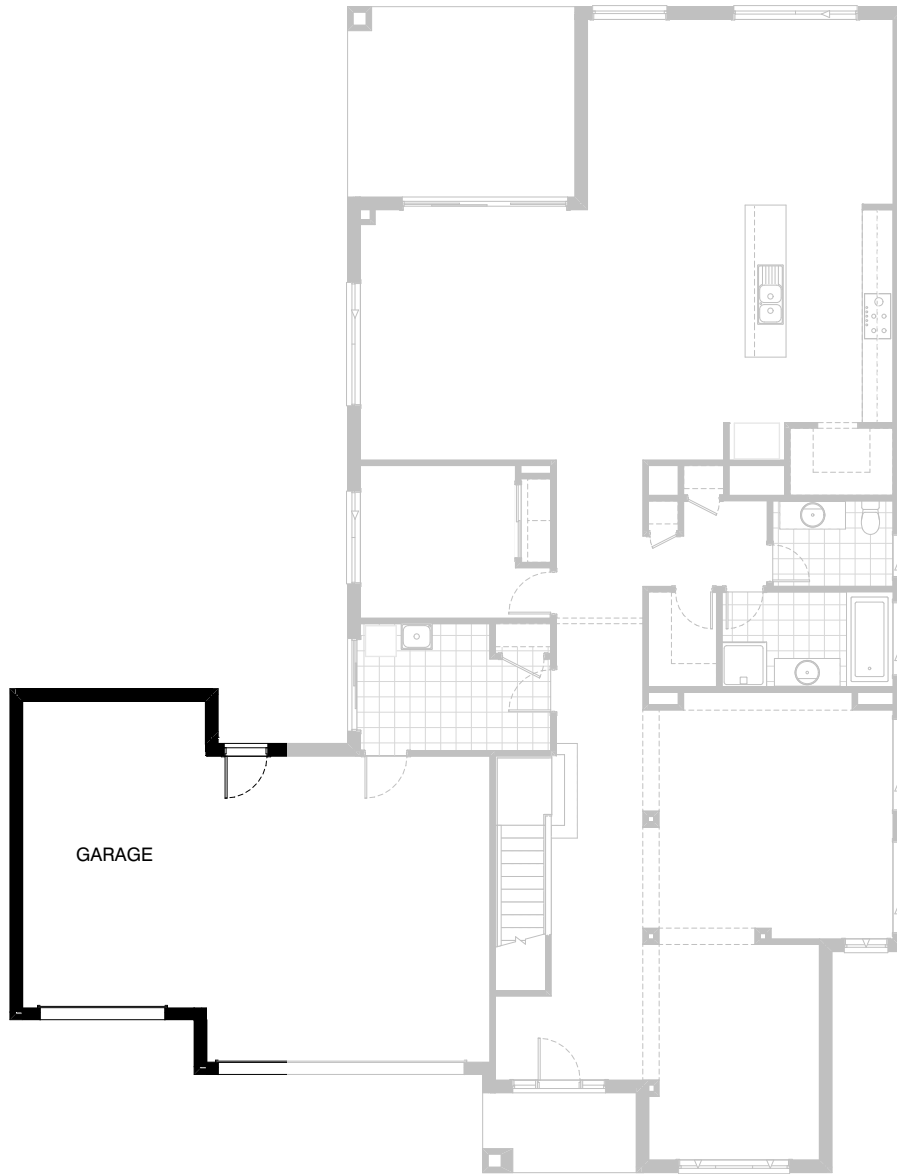
**Option G-2**

Provide extension to Garage to create Workshop area including additional 2057mm x 1450mm aluminium fixed window.  
(Option available to Facades with hip roof over Garage).

Increases area by 12.94m<sup>2</sup>.  
Increases width by 2400mm.

**FLOORPLAN OPTIONS**

 **5**  **5.5**  **2**



**Option G-3**

Provide triple car Garage including additional sectional door to front. (Option available to Facades with hip roof over Garage).

Increases area by 23.79m<sup>2</sup>.  
Increases width by 3600mm.