
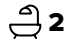
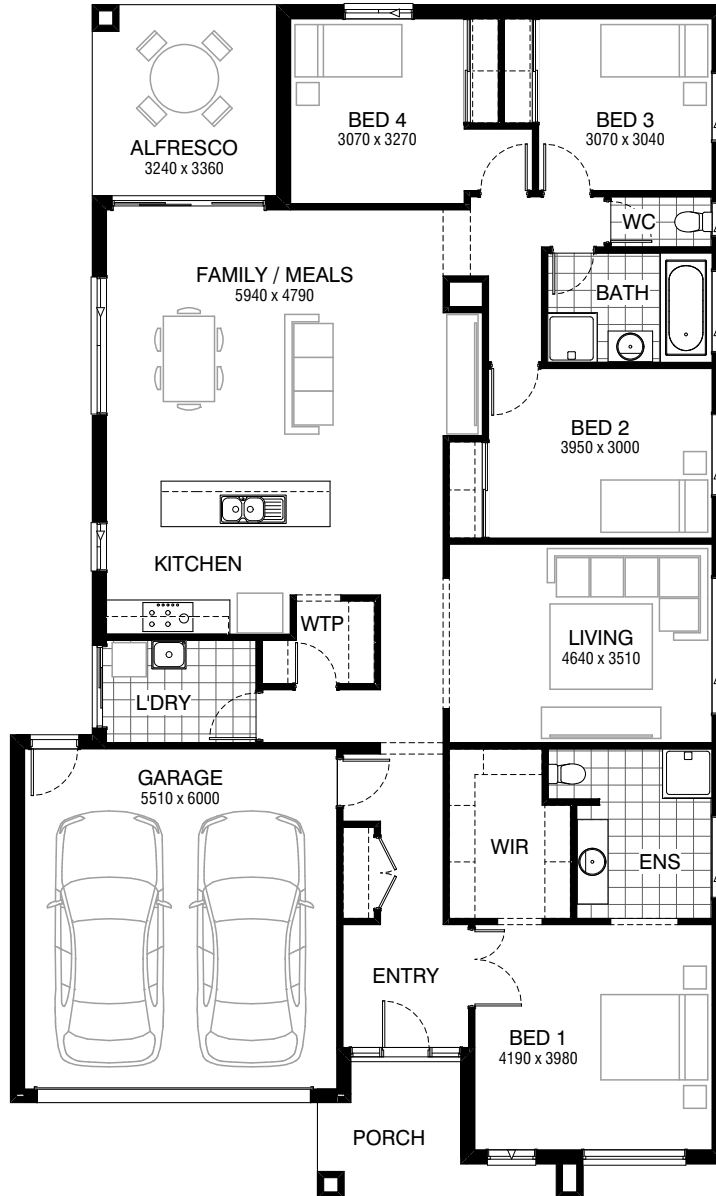


Total squares **25.3sq**

 **4**  **2**  **2**



**Facades available:**

Drysdale, Arkley, Coburn, Collins  
Dowd, Haring, Nolan, Alpine  
Woodland, Felix

**Overall home width 12.59m**  
**Overall home length 20.99m**

Residence	181.0m <sup>2</sup>	19.5sq
Garage	36.3m <sup>2</sup>	3.9sq
Porch	6.9m <sup>2</sup>	0.7sq
Alfresco	10.9m <sup>2</sup>	1.2sq
<b>Total</b>	<b>235.1m<sup>2</sup></b>	<b>25.3sq</b>

**FLOORPLAN OPTIONS**

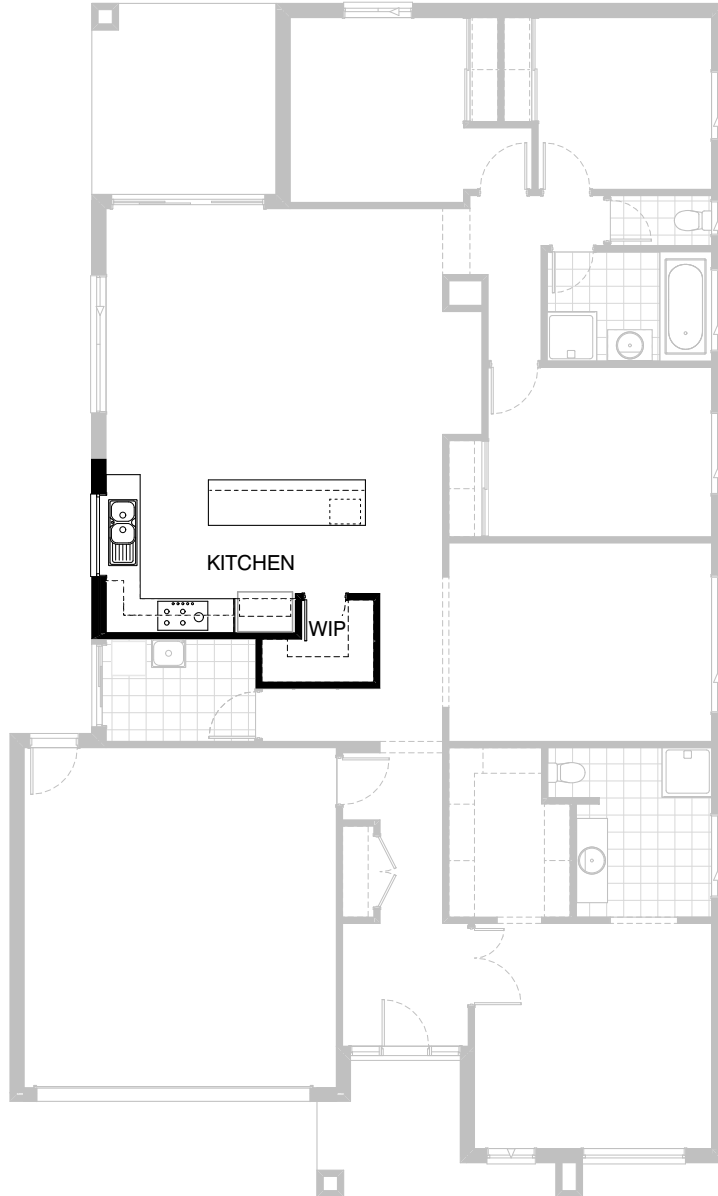
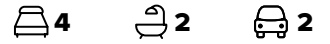
All available ready-to-go floorplan options for this design can be viewed on the following pages, or visit [www.burbank.com.au](http://www.burbank.com.au).

Listed details based on Drysdale façade floorplan (illustrated)

\*Copyright conditions. All photos and illustrations are representative only. Floor plans and specifications may be varied by Burbank without notice, the dimensions are diagrammatic only and a Building Contract with final drawings will display correct dimensions and detail. All designs are the property of Burbank and must not be used, reproduced, copied or varied, wholly or in part without written permission from an authorised Burbank representative. Copyright Burbank Australia Pty Ltd. ABN 91 007 099 872. Builders Registration Number CDB-U-52603.

**Call 13 BURBANK**  
**Visit [burbank.com.au](http://burbank.com.au)**

FLOORPLAN OPTIONS

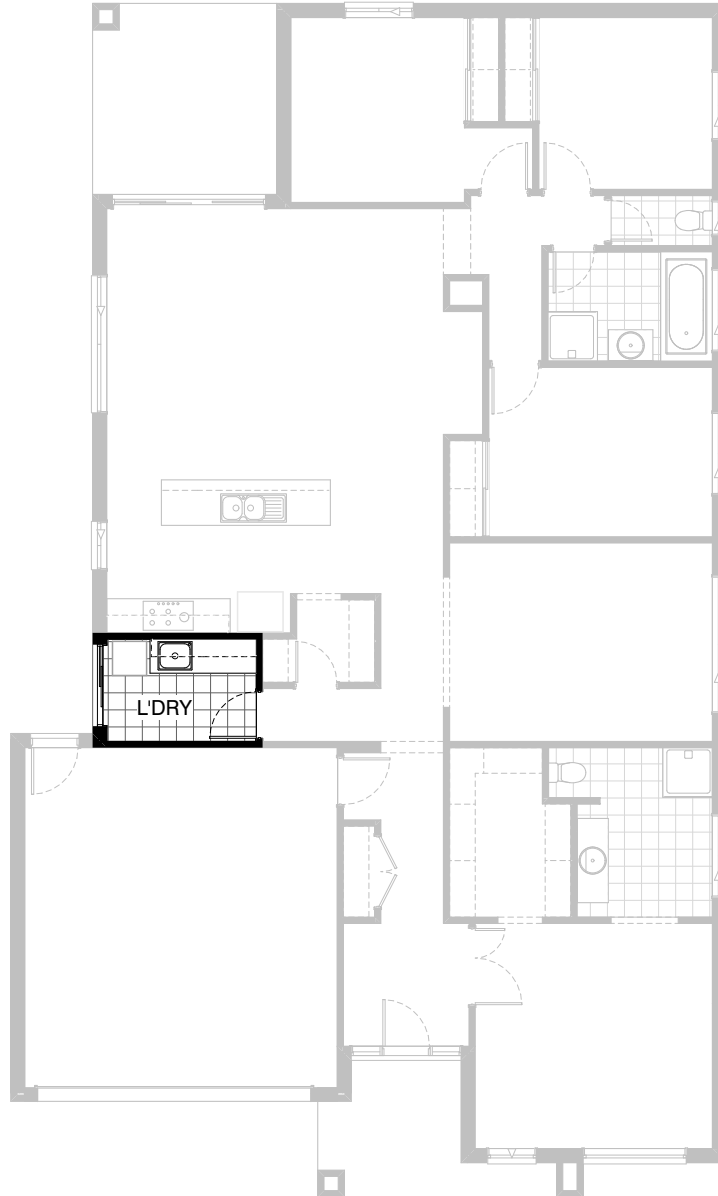
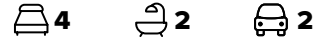


**Option K-1**

Provide Kitchen Option with additional 1no. laminated MW. provision with pot drawer below, 1no. laminated DW. provision, 3no. 800mm, 1no. 450mm and 1no. 400mm base cabinets, 1no. 450mm drawer unit, 1no. 900mm base corner carcass with 2/300mm doors, 2no. 300mm and 1no. 450mm overhead cabinets, 1no. 600mm overhead corner carcass with 2/275mm doors, 1no. 900mm laminated open shelf above refrigerator space, 1no. 900mm underbench oven with cooktop and retractable rangehood. Delete W.T.P and provide W.I.P with additional 450mm deep shelves and relocate 1no. 720mm flush panel door and delete opening / bulkhead to Pantry and provide 1no. 1200mm x 1450mm aluminium fixed window in lieu of standard 1no. 1800mm x 850mm aluminium window with additional tiled splashback and bench top to suit.

\*Copyright conditions. All photos and illustrations are representative only. Floor plans and specifications may be varied by Burbank without notice, the dimensions are diagrammatic only and a Building Contract with final drawings will display correct dimensions and detail. All designs are the property of Burbank and must not be used, reproduced, copied or varied, wholly or in part without written permission from an authorised Burbank representative. Copyright Burbank Australia Pty Ltd. ABN 91 007 099 872. Builders Registration Number CDB-U-52603.

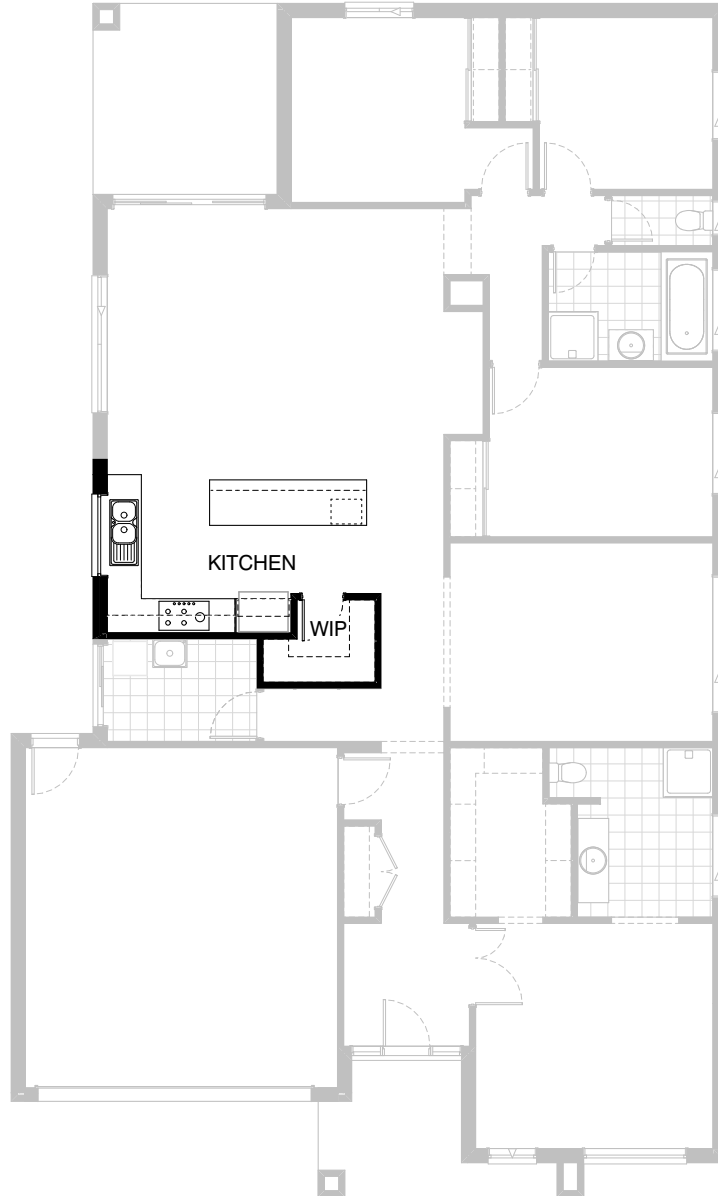
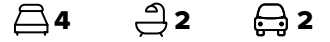
**FLOORPLAN OPTIONS**



**Option LD-1**

Provide Laundry Option including s.s.  
inset trough in 32mm laminated bench top,  
1no. 800mm base cabinet,  
2no. 900mm overhead cabinets,  
additional tiled splashback and bench top to suit.




FLOORPLAN OPTIONS



**Option K-2**

Provide Kitchen Option with additional 1no. laminated MW. provision with pot drawer below, 1no. laminated DW. provision, 3no. 800mm and 1no. 450mm and 1no. 400 base cabinets, 1no. 450mm drawer unit, 1no. 900mm base corner carcass with 2/300mm doors, 2no. 400mm and 1no. 450mm overhead cabinets, 1no. 900mm carcass with integrated rangehood with fixed door panels, 1no. 900mm laminated open shelf above refrigerator space, 1no. 900mm underbench oven with cooktop. Delete W.T.P and provide W.I.P with additional 450mm deep shelves and relocate 1no. 720mm flush panel door and delete opening / bulkhead to Pantry and provide 1no. 1200mm x 1450mm aluminium fixed window with no bottom reveal in lieu of standard 1no. 1800mm x 850mm aluminium window with additional tiled splashback and bench top to suit.

**FLOORPLAN OPTIONS**

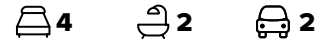
 **4**    **2**    **2**



**Option LD-2**

Provide Laundry Option with additional plaster lined site built broom cupboard with  
1no. 720mm flush panel hinged door,  
s.s. inset trough in 32mm laminated bench top,  
1no. 800mm base cabinet,  
1no. 800mm overhead cabinet,  
additional tiled splashback and bench top to suit.

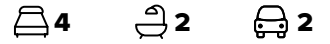
FLOORPLAN OPTIONS



**Option LD-3**

Provide Laundry Upgrade including s.s.  
inset trough in 32mm laminated bench top,  
1no. 900mm and 1no. 450mm base cabinets,  
1no. 900mm and 1no. 450mm overhead cabinets,  
1no. 400mm full height laminated broom cupboard,  
additional tiled splashback and bench top to suit.

**FLOORPLAN OPTIONS**



**Option LD-4**

Provide Laundry Upgrade including s.s.  
inset trough in 32mm laminated bench top,  
2no. 900mm base cabinets,  
2no. 900mm overhead cabinets,  
additional tiled splashback and bench top to suit.

**FLOORPLAN OPTIONS**

 **4**     **2**     **2**

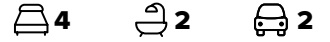


**Option ENS-1**

Provide Ensuite Option with additional  
1675mm bath with 900mm wide tiled hob.  
Relocate shower door and reduce  
opening / bulkhead width by 400mm to suit.



FLOORPLAN OPTIONS



### Option ENS-2

Provide additional plaster lined stud wall with 720mm flush panel hinged door to WC.  
1200mm x 900mm polymarble shower base in lieu of 900mm x 900mm polymarble shower base.  
Reduce W.I.R by 500mm and delete shelving and provide 1782mm vanity in lieu of 1482mm vanity.

**FLOORPLAN OPTIONS**






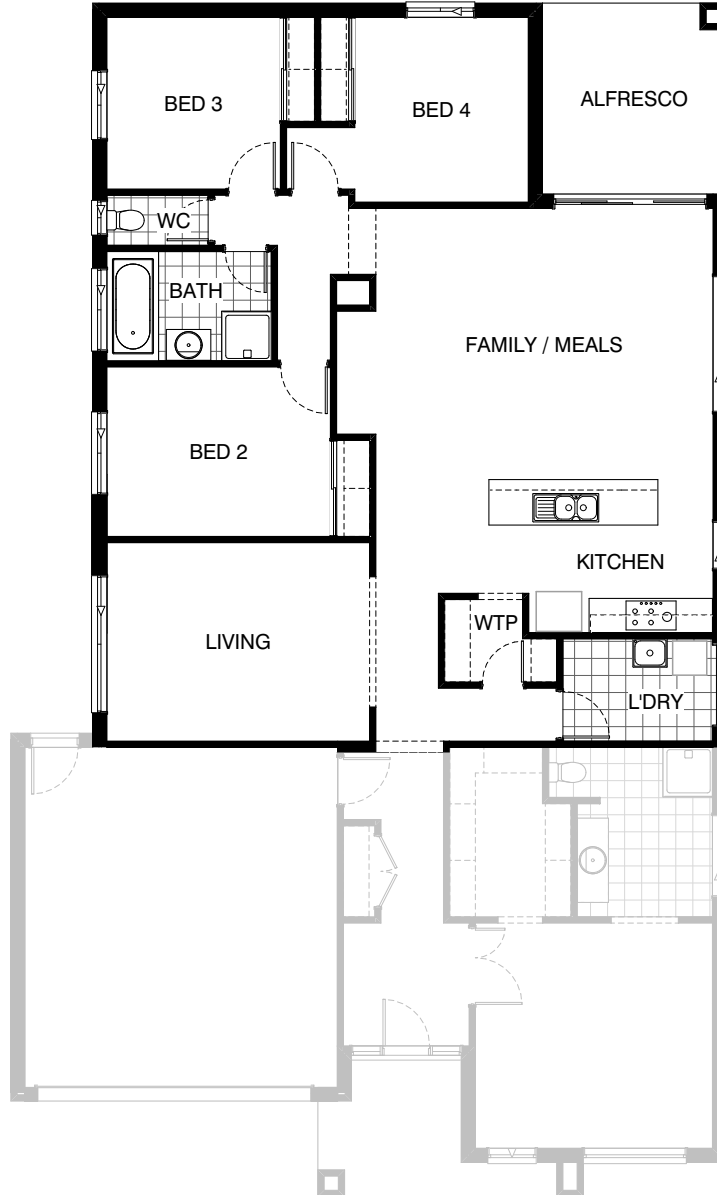
**Option ENS-3**

Provide Ensuite Upgrade with wall to wall tiled shower base, 1no. 1782mm wide vanity unit with 2no. basins in lieu of standard.

1no. 1800mm x 850mm aluminium sliding window in lieu of standard and increase Ensuite width by 50mm and decrease W.I.R by 50mm to suit and reduce opening / bulkhead width by 300mm to suit.

**FLOORPLAN OPTIONS**




 **4**    **2**    **2**

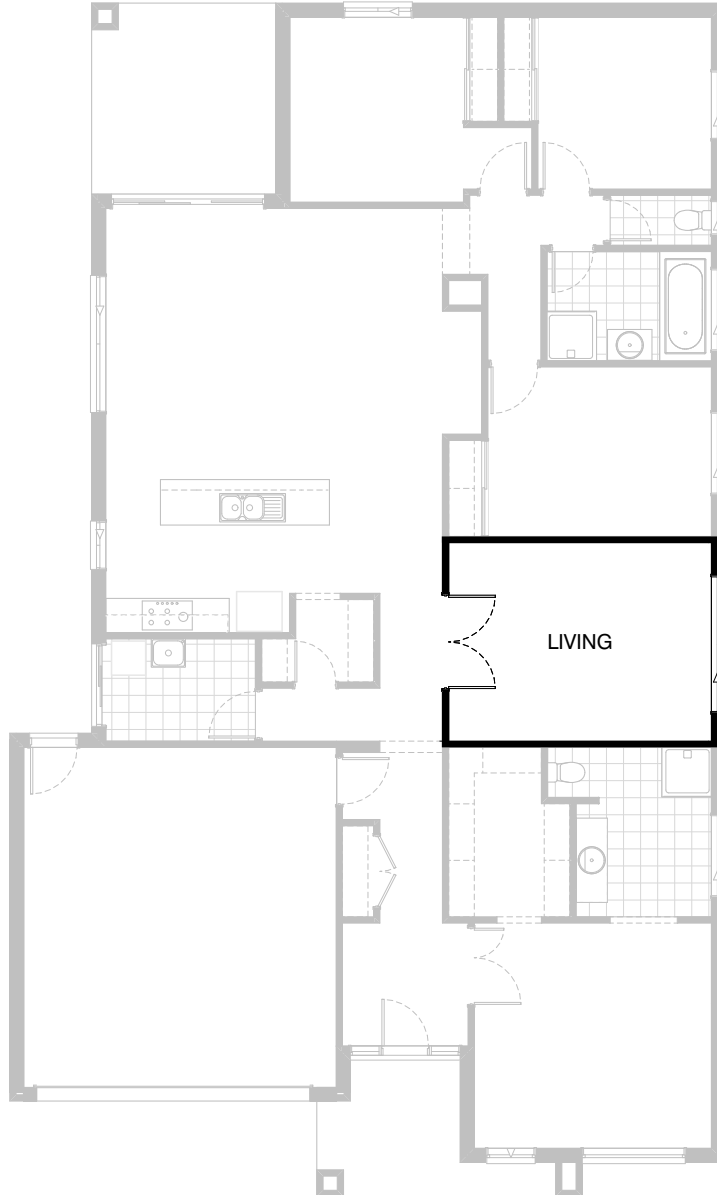


**Option IP1-1**

Mirror rear of house.

**FLOORPLAN OPTIONS**

 **4**    **2**    **2**



**Option IP1-2**

Provide 2no. 820mm flush panel hinged doors and additional plaster lined stud wall to Living in lieu of standard opening.

**FLOORPLAN OPTIONS**



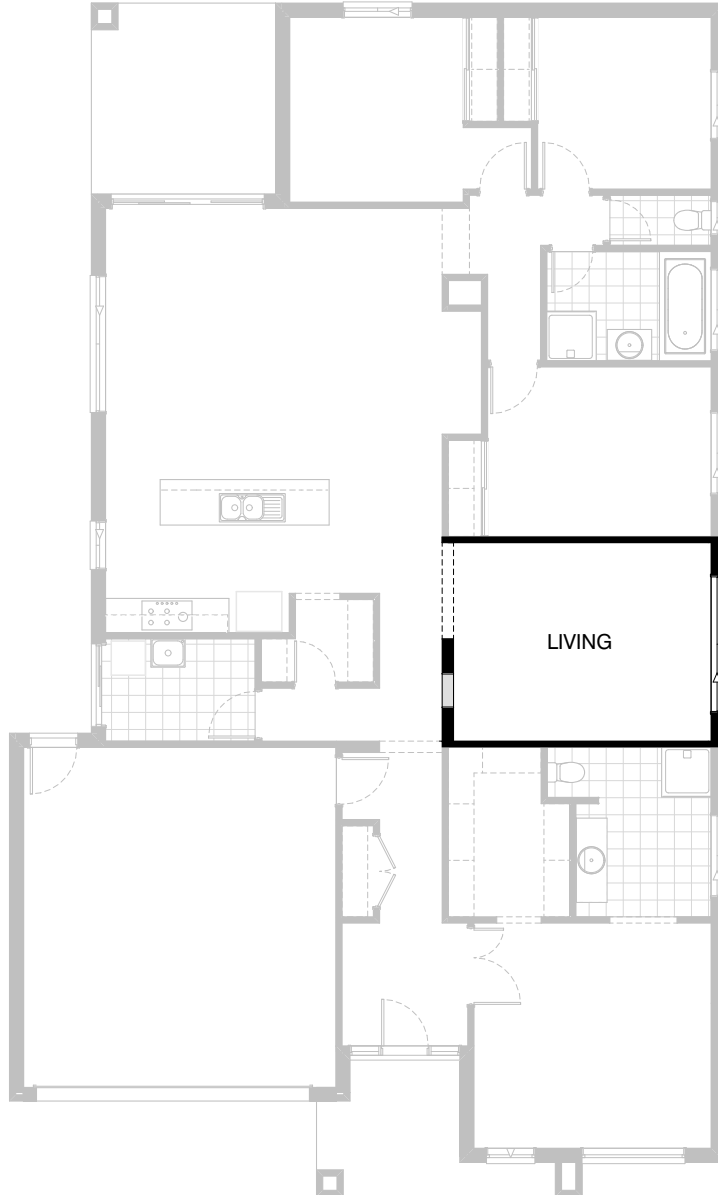
**4**



**2**



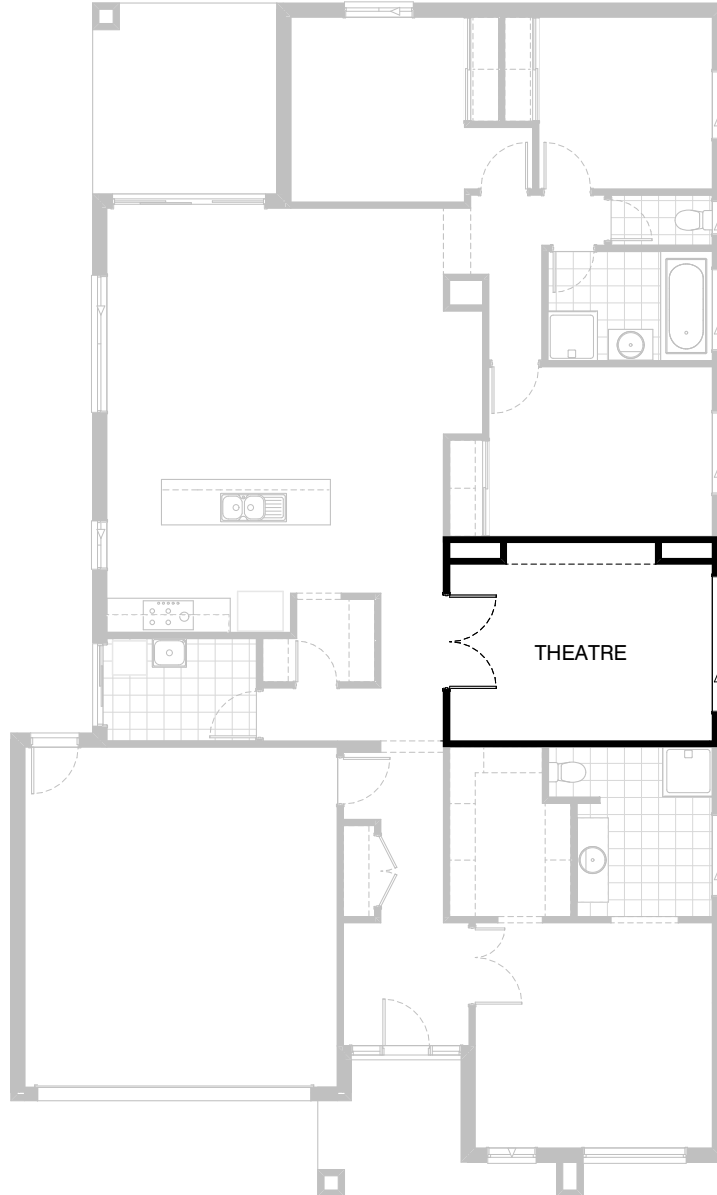
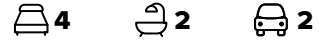
**2**



**Option IP1-3**

Provide feature opening and wall cut-out to Living with 180mm wide bulkhead above in lieu of standard opening.

**FLOORPLAN OPTIONS**



**Option IP1-4**

Convert standard Living room into Theatre room including 2no. 820mm flush panel hinged doors, additional plaster lined stud wall and feature wall with plaster columns and bulkhead above.

**FLOORPLAN OPTIONS**



**4**



**2**



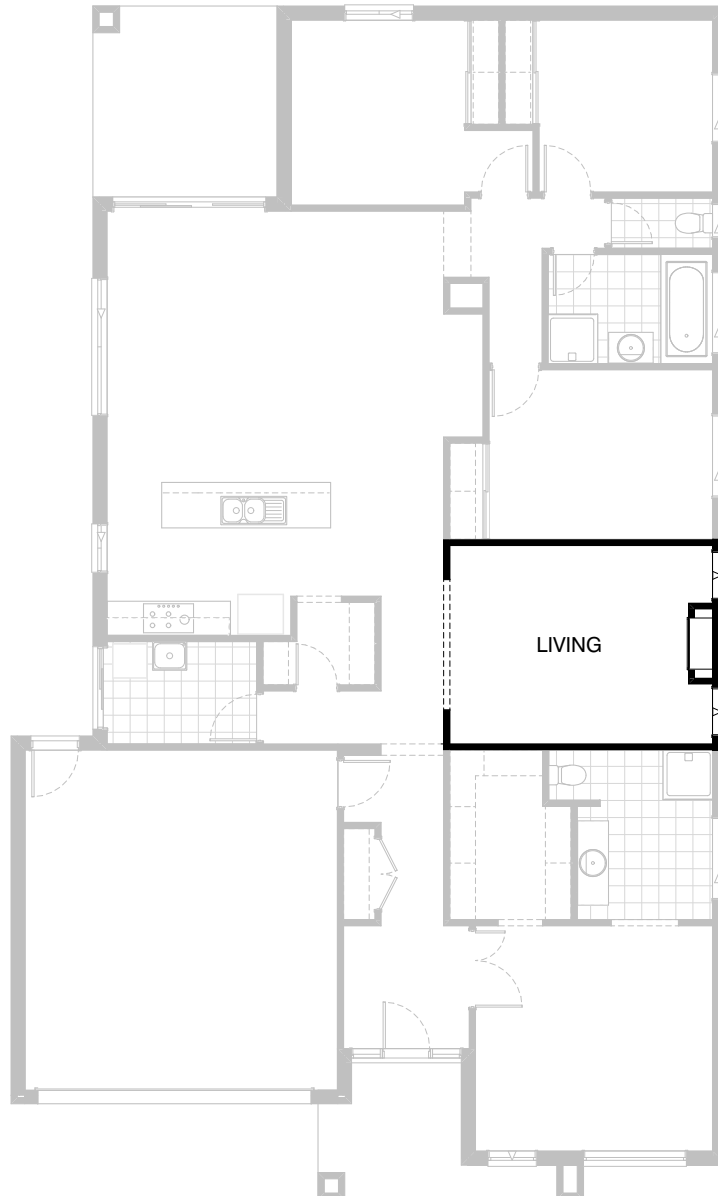
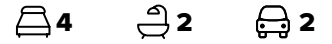
**2**



**Option IP1-5**

Convert standard Alfresco area to Dining room.  
(Note:- This Option cannot be selected with  
Option EP1)

**FLOORPLAN OPTIONS**






**Option IP1-6**

Provide Real Flame Inspire 900 gas fireplace, 400mm off floor level in a 1400mm x 420mm boxed out plaster wall with a 4 sided black fascia to Living room side wall.  
Delete 1no. 2057mm x 2410mm aluminium sliding window and provide additional  
2no. 2057mm x 850mm aluminium feature awning window to suit.



**FLOORPLAN OPTIONS**




 **4**    **2**    **2**

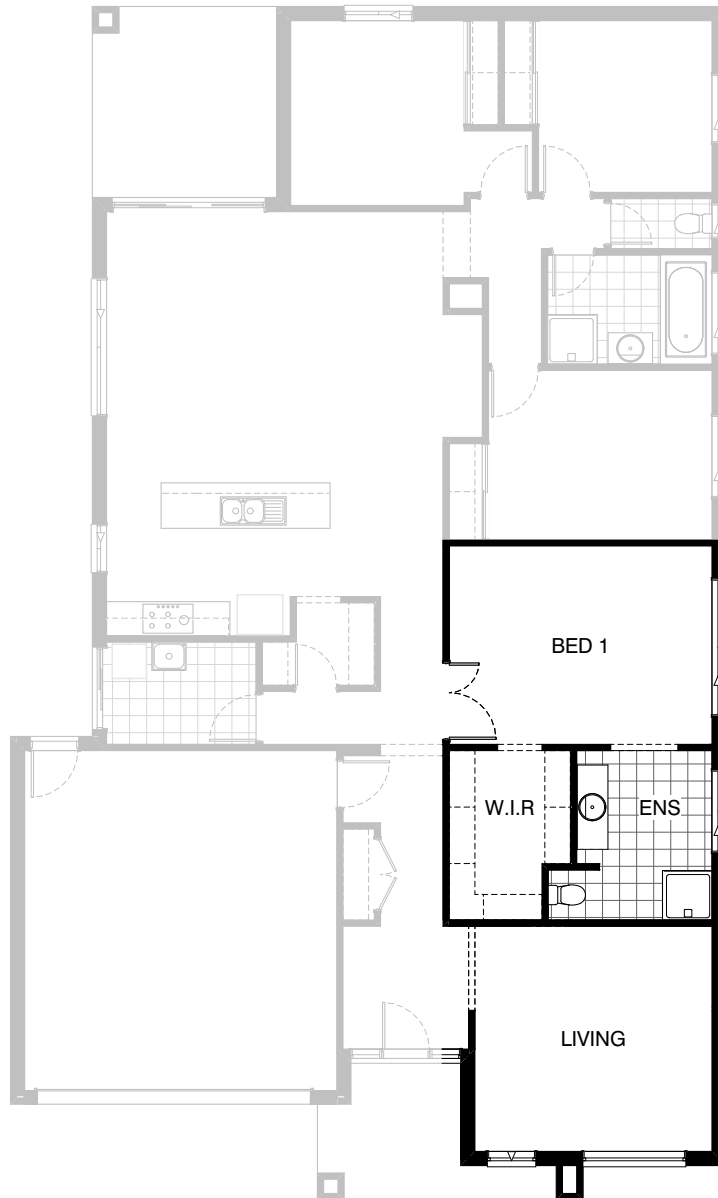


**Option IP1-7**

Provide alternate Ensuite and W.I.R design including 1200mm x 900mm polymarble shower base, 1675mm bath with 900mm wide tiled hob, additional bowl to 1482mm vanity unit and W.I.R redesign.

**FLOORPLAN OPTIONS**




 **4**    **2**    **2**

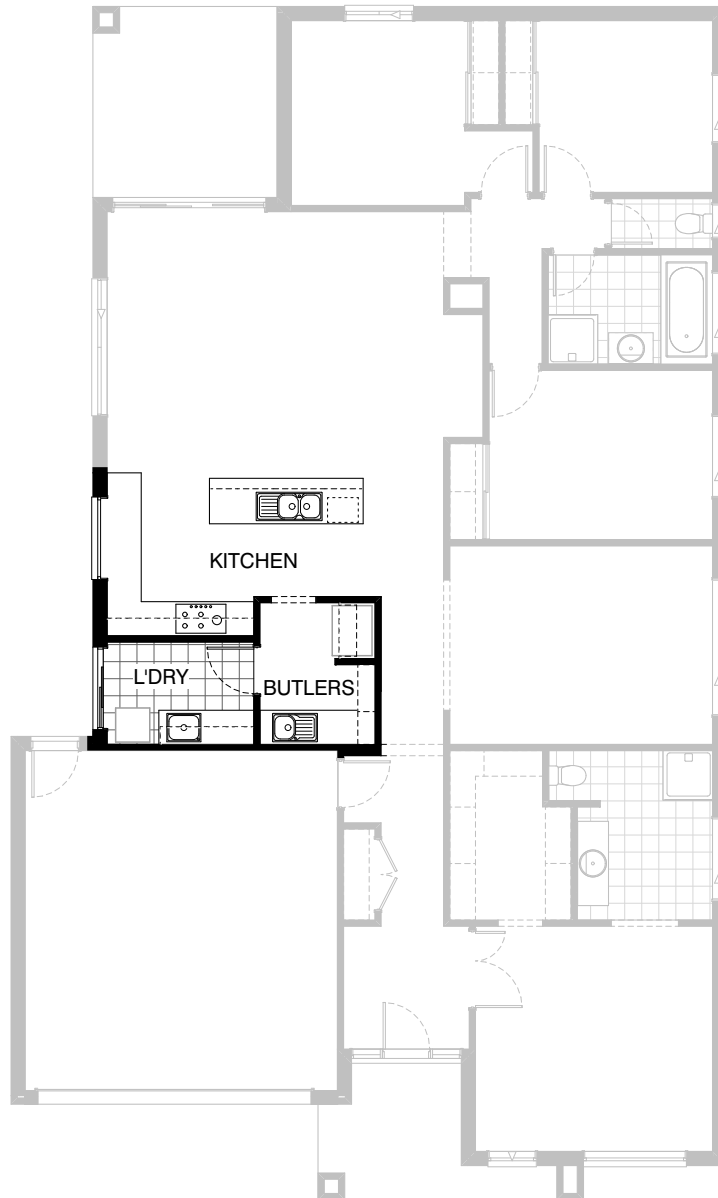


**Option IP1-8**

Relocate Living with Bed 1 including  
mirror Ensuite and W.I.R.

FLOORPLAN OPTIONS

 **4**    **2**    **2**

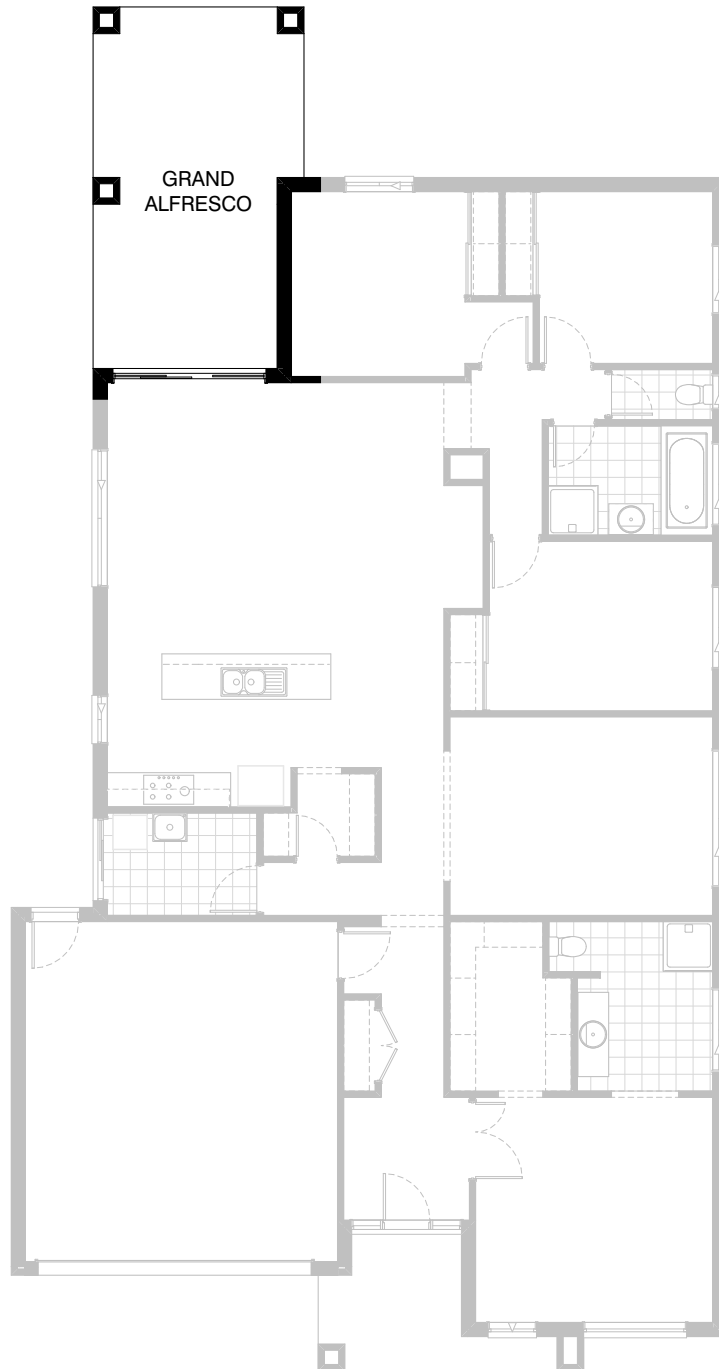
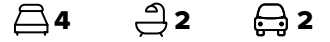


**Option IP1-9**

- Provide Kitchen, Butlers Pantry and Laundry Upgrade including reconfigured Pantry and Passage. Remove 1no. 720mm hinged doors and provide Butlers Pantry redesign to suit including 800mm opening.
  - Provide 1no. 1050mm blind corner cabinet with 600mm door, 1no. 900mm cooktop, 1no. 900mm underbench oven, 1no. 900mm retractable rangehood within 900mm overhead cabinet, 1no. 450mm drawers, 3no. 900mm and 2no. 800mm and 2no. 450mm base cabinets, 1no. 800mm and 1no. 450mm and 1no. 350mm overhead cabinets, 1no. laminated DW. provision, 1no. laminated MW. provision with pot drawer below, 900mm open shelf above refrigerator space.
  - Provide additional single bowl sink to Butlers including additional 20mm stone bench top and tiled splashback to suit. Provide 300mm deep laminated shelving unit to Butlers as indicated.
  - Provide 1no. 1200mm x 1450mm aluminium fixed window in lieu of standard 1no. 1800mm x 850mm aluminium window with additional tiled splashback and bench top to suit.
  - Provide Laundry Upgrade with additional inset trough, 2no. base cabinets, 2no. 800mm overhead cabinets with additional tiled splashback and bench top to suit.
- (Note:- Option reduces Family / Meals by 90mm.)

\*Copyright conditions. All photos and illustrations are representative only. Floor plans and specifications may be varied by Burbank without notice, the dimensions are diagrammatic only and a Building Contract with final drawings will display correct dimensions and detail. All designs are the property of Burbank and must not be used, reproduced, copied or varied, wholly or in part without written permission from an authorised Burbank representative. Copyright Burbank Australia Pty Ltd. ABN 91 007 099 872. Builders Registration Number CDB-U-52603.

FLOORPLAN OPTIONS






**Option EP1-1**

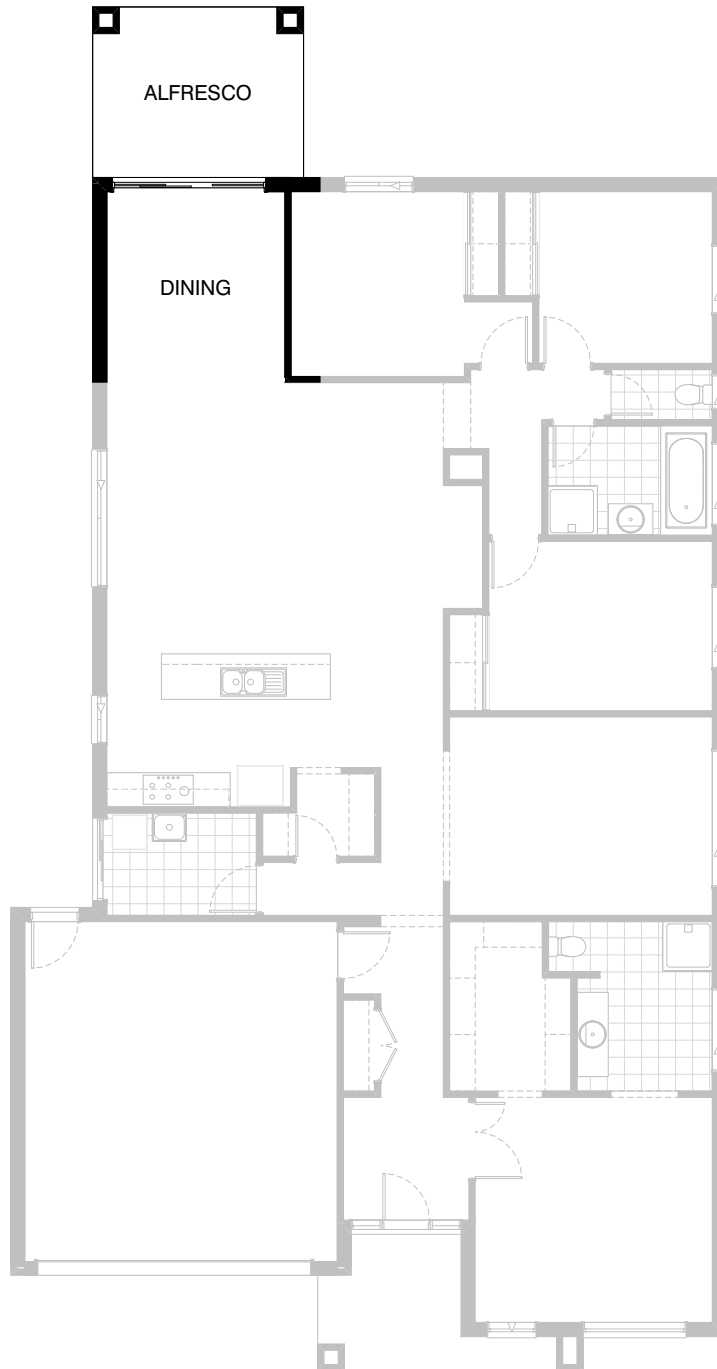
Increase standard Alfresco length under dwelling roof line to create Grand Alfresco including additional structural concrete floor and 2no. brick piers.

(Note:- This Option cannot be selected with Options EP2 and IP5)

Increases area by 11.13m<sup>2</sup>.  
Increases length by 3000mm

**FLOORPLAN OPTIONS**

 **4**    **2**    **2**



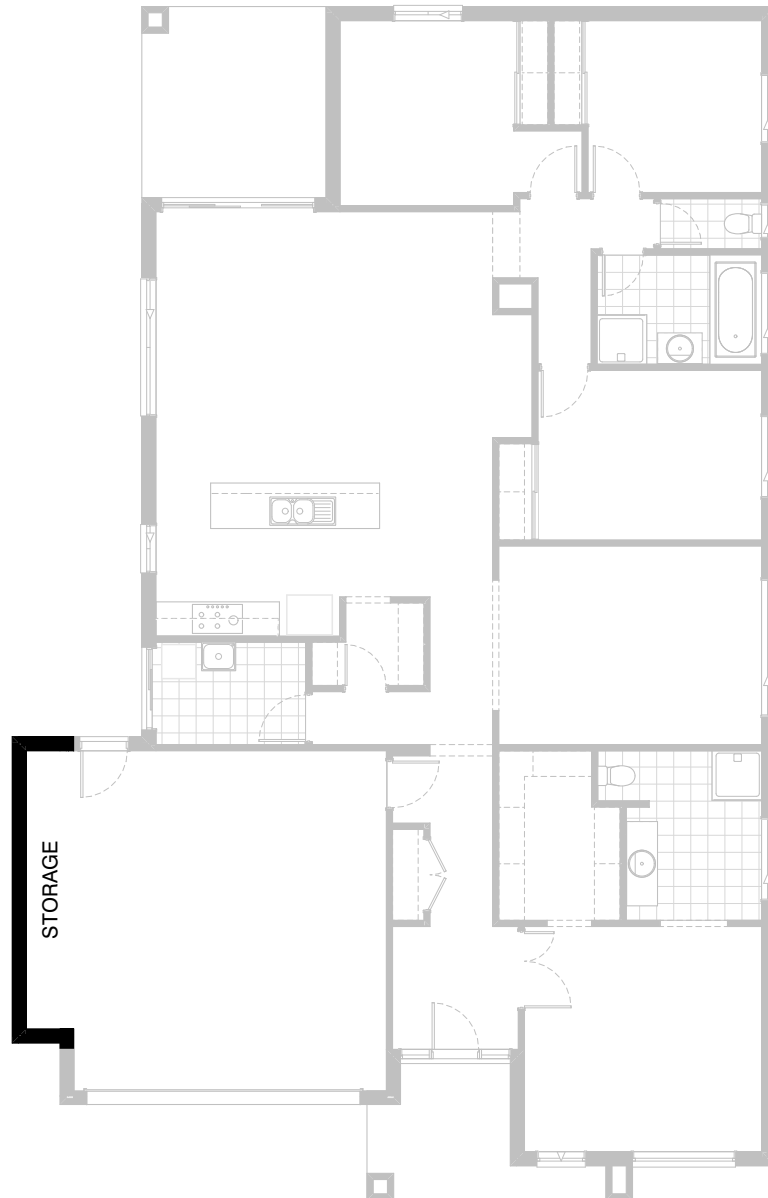
**Option EP1-2**

Convert standard Alfresco area to Dining room and provide Alfresco under dwelling roof line including additional structural concrete floor and 2no. brick piers to rear of Dining room.

(Note:- This Option cannot be selected with Options EP1 and IP5)

Increases area by 11.13m<sup>2</sup>.  
Increases length by 3000mm

**FLOORPLAN OPTIONS**



**Option G-1**

Provide extension to Garage to create additional Storage area.  
Increases area by 4.53m<sup>2</sup>.  
Increases width by 840mm.

**FLOORPLAN OPTIONS**



**4**



**2**



**2**



**Option G-2**

Provide extension to Garage to create Storage area including additional 2057 x 850 aluminium awning window.

Increases area by 11.48m<sup>2</sup>.  
Increases width by 2040mm.

**FLOORPLAN OPTIONS**



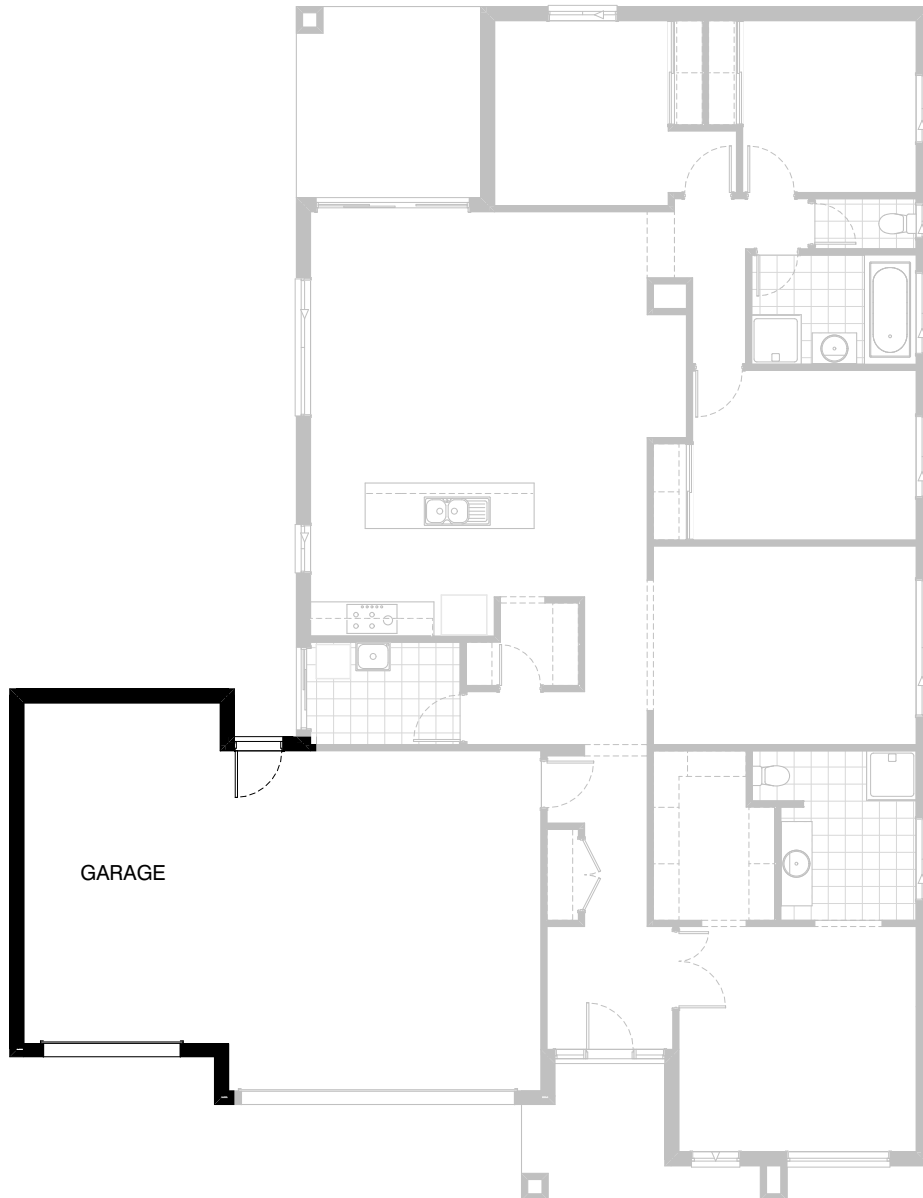
**4**



**2**



**2**



**Option G-3**

Provide triple car Garage including additional Garage door as per colour selection.

Increases area by 23.61m<sup>2</sup>.  
Increases width by 3600mm.